



21st Century School Buildings Plan

SCHOOL Cherry Hill Elementary/Middle School

COMMUNITY MEETING Design Review | May 19, 2016

Introductions

Nicole Price

21st Century School Buildings Program
Director of Community & Public Relations
City Schools

Michael McBride

21st Century School Buildings Program
Director of Design
City Schools

Dan Hagan

21st Century School Buildings Program
Project Manager
City Schools Partners

Design Team

JRS Architects – John Srygley
Schrader Group Architects – David Schrader
GWWO Architects – Bob Mock

Agenda

Overview**Design Review****Timeline****Next Steps**

Summary of Activities – Timeframe



Planning



Design



Construction



Occupancy



18-24 Months



18-24 Months

Cherry Hill Community Vision

A multi-complex community school campus to:

- Meet the extra-curricular and academic needs of students and community
- Increase collaboration and coordination between Cherry Hill Schools
- Shared partnerships among the high, middle and elementary schools
- And teacher training area within the school building and enhanced universities partnership

Arundel Enrollment Numbers

Current Grades	Pre K-8
Current capacity	352
Enrollment	(SY 14) 418
Current Utilization	119%

Design Grades	Pre K- 2
Design capacity	636
Design Enrollment	575
Design Utilization	90%

Enrollment Projections	
	SY 20-21
PK	102
K	152
1 st	153
2 nd	168

Cherry Hill Enrollment Numbers

Current Grades	Pre K-8
Current capacity	452
Enrollment	(SY 14) 432
Current Utilization	96%

Design Grades	3-8
Design capacity	932
Design Enrollment	840
Design Utilization	90%

Enrollment Projections	
	SY 20-21
3 rd	166
4 th	172
5 th	198
6 th	192
7 th	201
8 th	193

Arundel Elementary

Design Grades	Pre K- 2
Design capacity	636
Design Enrollment	575
Design Utilization	90%

Cherry Hill

Design Grades	3-8
Design capacity	932
Design Enrollment	840
Design Utilization	90%

Arundel

	SY 20-21
PK	102
K	152
1 st	153
2 nd	168

Cherry Hill

	SY 20-21
3 rd	166
4 th	172
5 th	198
6 th	192
7 th	201
8 th	193

Arundel Elementary Classrooms and Spaces

(7) Pre-K classrooms	Media Center
(7) Kindergarten classrooms	Cafeteria
(14) Classrooms for grades 1 and 2	Gymnasium
(4) Collaborative learning areas	Administrative/Health Suites
(2) Special Education classrooms	Student Services
(1) Elementary Science classroom	Judy Center
(1) Technical Education classroom	Early Learning Center
(2) Music rooms	Community Space
(2) Art rooms	

Cherry Hill Classrooms and Spaces

(18) Classroom for Grades 3, 4, and 5	(1) Foreign Language lab
(18) Classrooms for Grades 6, 7, and 8	(1) Robotics lab
(6) Collaborative Learning areas	(1) Gateway to Technology lab
(3) Special Education classrooms	(1) Media Center
(2) Middle School PRIDE classrooms	Cafeteria/Auditorium “Cafetorium”
(1) Elementary Science classroom	Gymnasium
(2) Middle School Science classrooms	Wrestling Room
(1) Technical Education classrooms	Administrative/Health Suites
(2) Music rooms	Student Services
(2) Art rooms	Community Space

- A two-story addition to the existing building and a complete gut and re-use of the original building; 1959 wing to be demolished.
- 3rd – 5th grades are on the ground floor; 6th – 8th grades are on the second floor.
- Clustering of classrooms (six each) around collaborative areas
- Community use spaces for public use towards the front and academic areas to the back of the project
- Overall plan is designed to create an outdoor play area framed by this building and the Community Center



FRONT VIEW, Bridgeview Road



REAR VIEW



SIDE VIEW, CHERRYLAND ROAD



SIDE VIEW



EXTERIOR VIEW: MAIN ENTRY



EXTERIOR VIEW: REAR PLAYGROUND



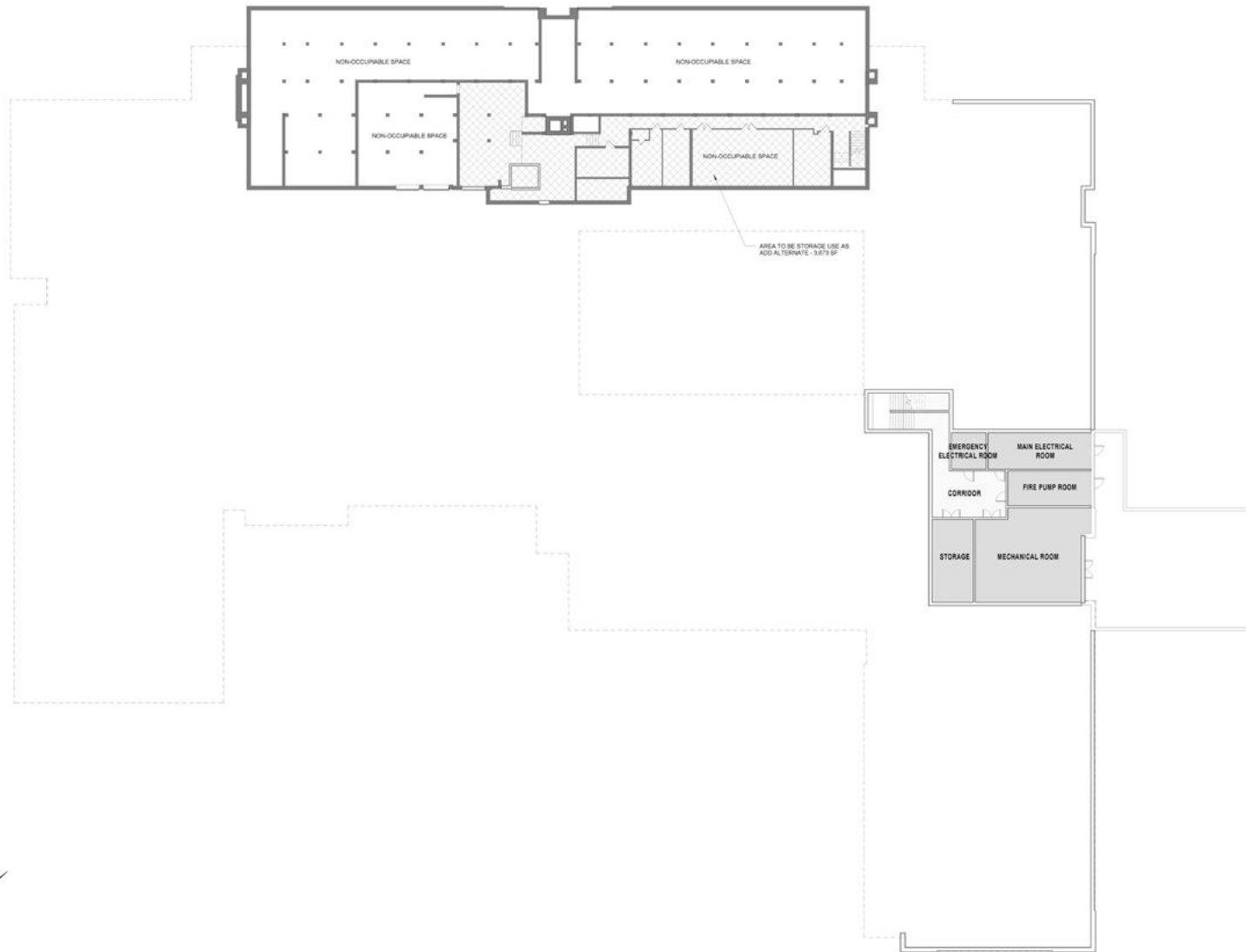


Cherryland Road

FIRST FLOOR PLAN



SECOND FLOOR PLAN



LOWER LEVEL FLOOR PLAN



INTERIOR VIEW: MAIN ENTRANCE HALL



INTERIOR VIEW: SECOND FLOOR COMMONS CORRIDOR



INTERIOR VIEW: SIDE ENTRANCE VESTIBULE



INTERIOR VIEW: CLASSROOM



INTERIOR VIEW: CAFETORIUM



INTERIOR VIEW: COURTYARD



INTERIOR VIEW: CENTRAL STAIRCASE



INTERIOR VIEW: SECOND FLOOR CENTRAL STAIRCASE



INTERIOR VIEW: COLLABORATION SPACE



INTERIOR VIEW: GYMNASIUM

Thank You!



This presentation is brought to you by the
21st Century School Buildings Program
and the design team of JRS Architects,
GWWO Architects and Schrader Group
Architects.

www.baltimore21stcenturyschools.org

21st Century School Buildings Program

Baltimore City Public Schools
200 East North Avenue Room 407-B
Baltimore MD 21202
(443) 642-4600

Mignon R. Anthony

Executive Director, 21st Century Buildings Program
Baltimore City Public Schools

Gary McGuigan

Senior Vice President, Capital Development Division
Maryland Stadium Authority

Dawn Kirstaetter

Deputy Mayor, Health, Human Services, Education and Youth
City of Baltimore

David Lever

Executive Director, Public School Construction Program
State of Maryland

