

21st Century School Buildings Plan

LYNDHURST ELEMENTARY SCHOOL #88 RENOVATION / ADDITION
COMMUNITY MEETING – DESIGN STATUS AND RELOCATION DISCUSSION

January 13, 2016

BALTIMORE CITY
PUBLIC SCHOOLS



Introductions

Nicole Price

21st Century School Buildings Program
Director of Engagement
City Schools

Kate Acker

21st Century School Buildings Program
Project Manager
Maryland Stadium Authority

Donald Currie

Design Architect
STV Incorporated

Joe Swanson

Project Executive
Turner Construction

Agenda

Overview of Process**Educational Spaces and Enrollment****Design Presentation****Relocation and Timeline**

Overview



**Educational
Specifications**

**Feasibility
Study**

**Confirmation
Process**

**Concept
Design**

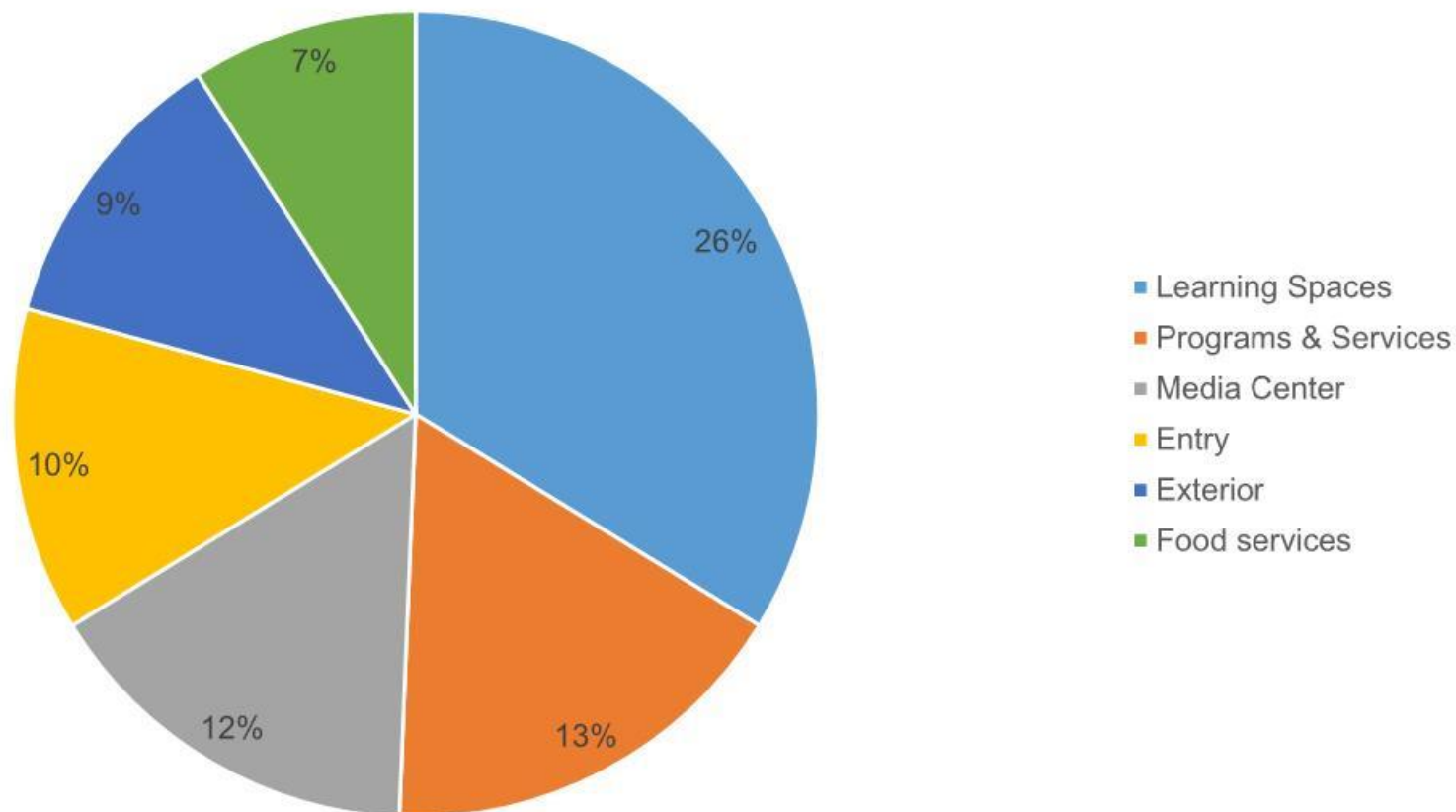
**Schematic
Design**

**Design
Development**

**Construction
Documents**

June 2013-January 2016

What we heard from school staff, parents and community members...



Lyndhurst Classroom and Spaces

1 together at three classroom	Media center/video studio
5 pre-k and kindergarten classes	1 technical education classroom
6 classes for grades 1 and 2	2 Music Rooms
9 classes for grades 3, 4 and 5	1 art classroom
9 classes for grades 6, 7 and 8	Cafetorium
5 collaborative learning areas	Gymnasium
3 special education classrooms	Administrative and health suite
1 elementary science room	Student services
1 middle school science room	Community space



Illustrative Site and Landscape Plan

(GELSTON STREET)



Outdoor learning spaces



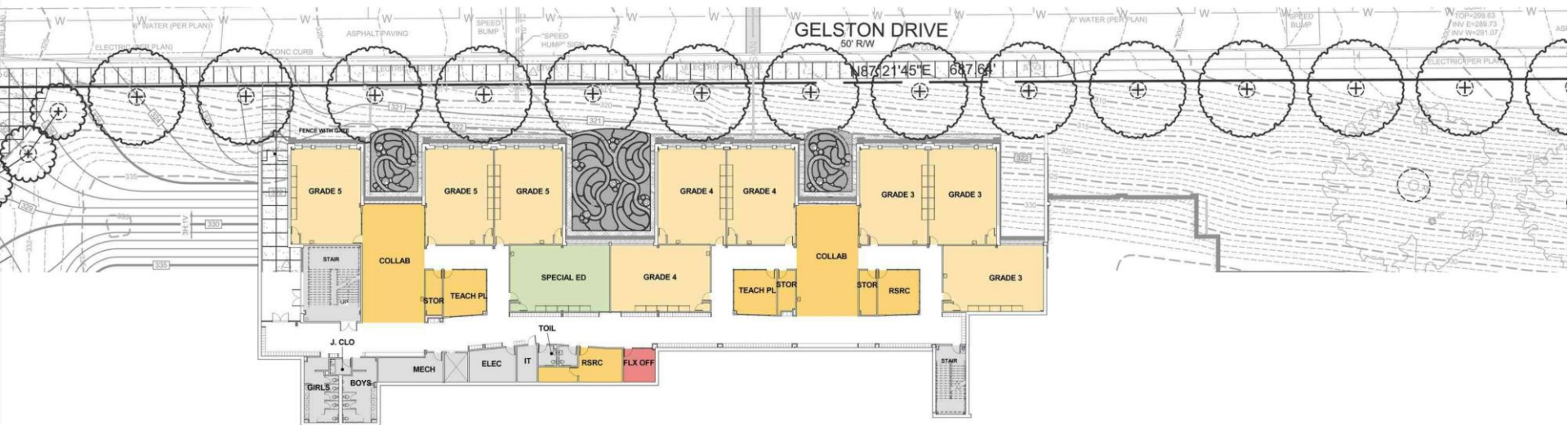
3D View - South Entry



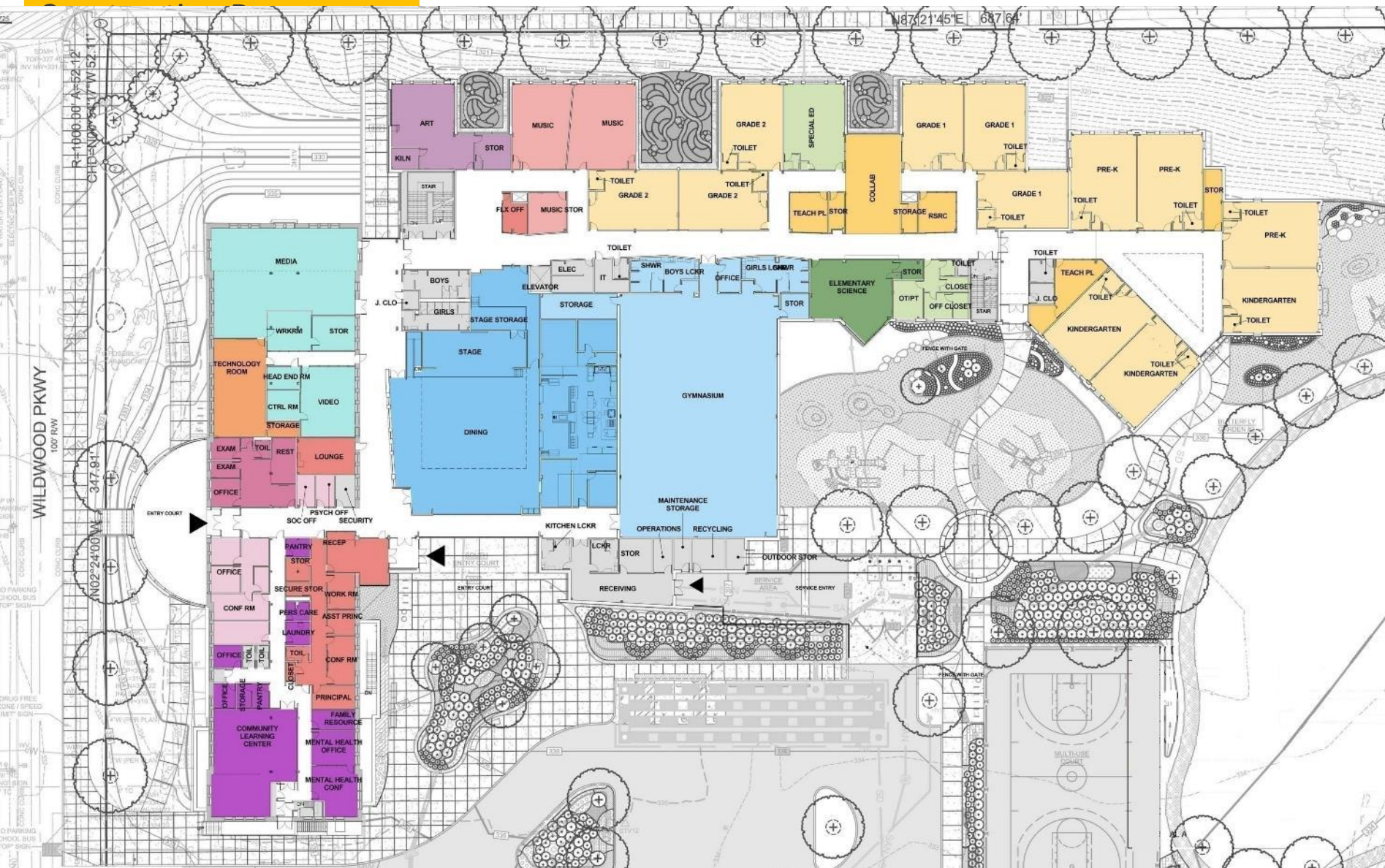
3D View – Corner of Wildwood and Gelston -



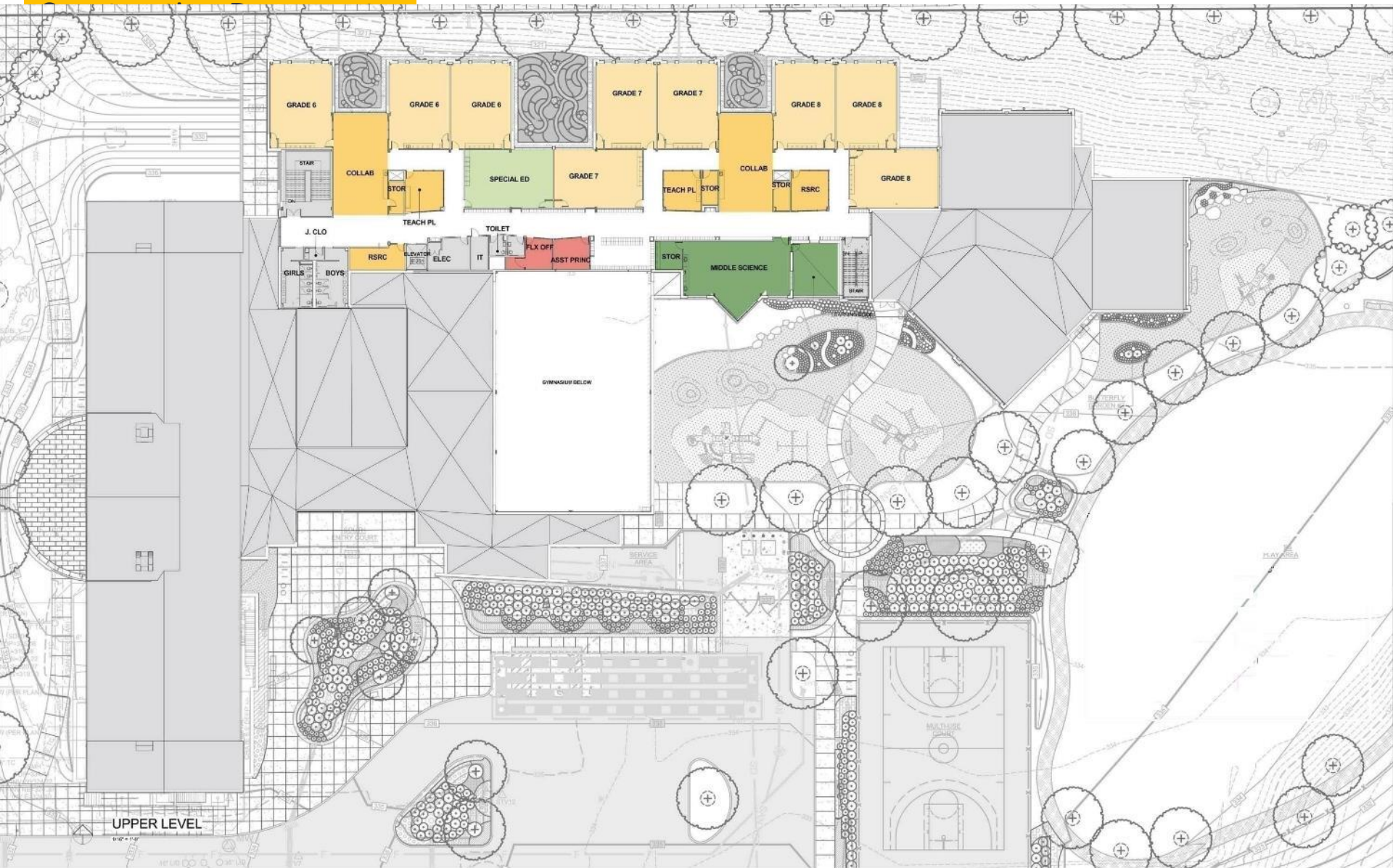
3D View Gelston Street



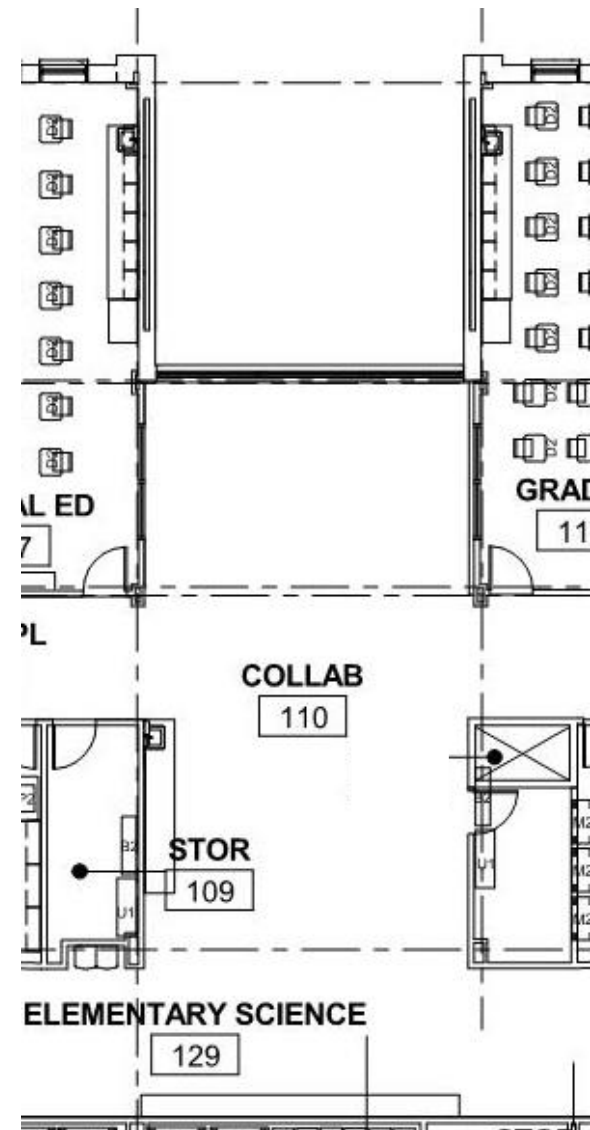
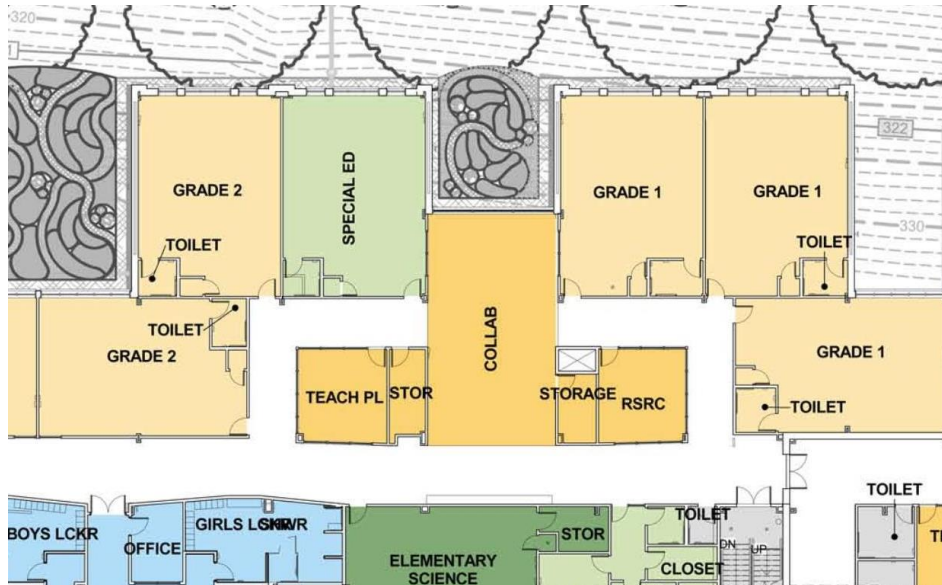
Lower Level Floor Plan



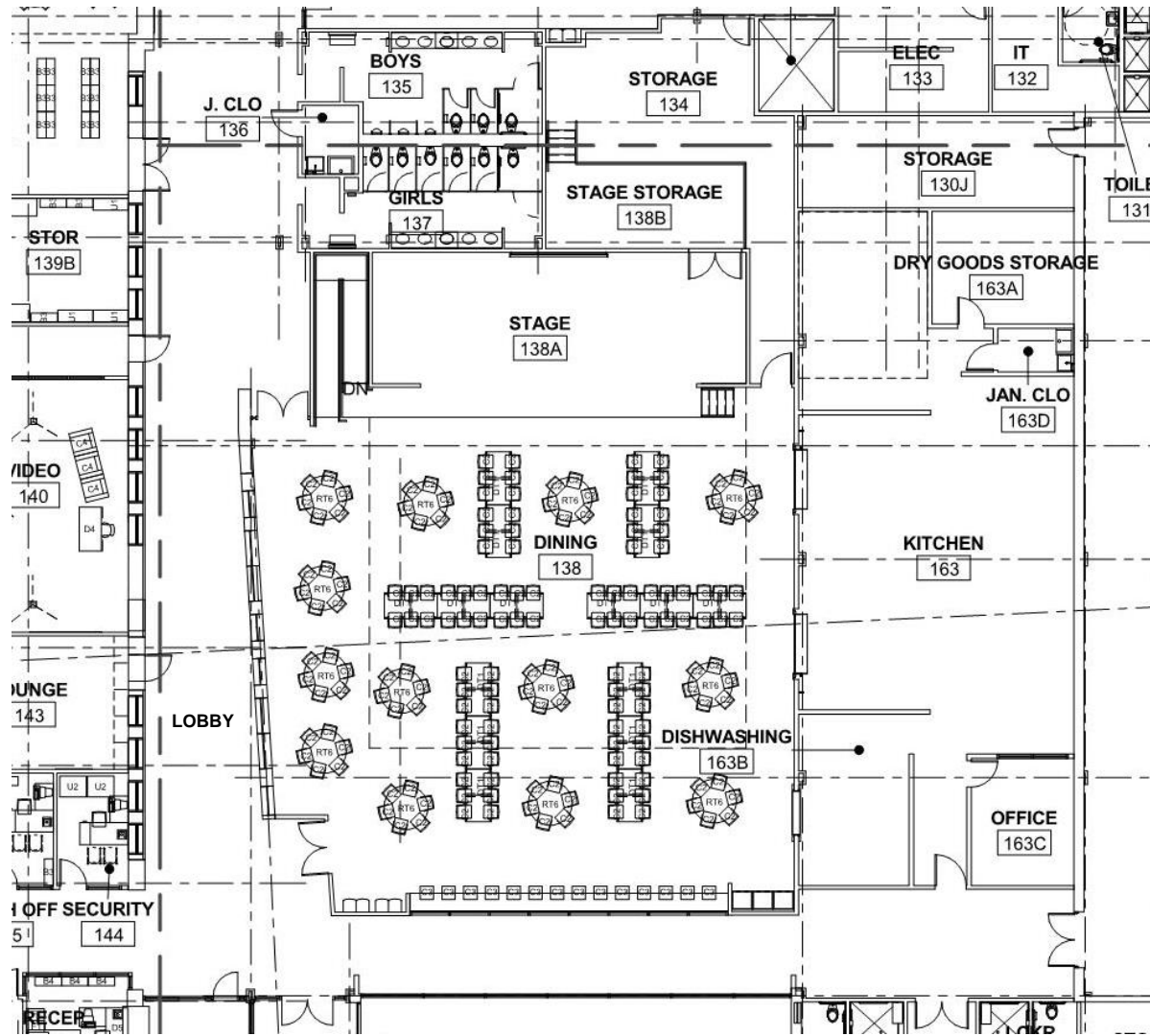
Main Level Floor Plan



Upper Level Floor Plan



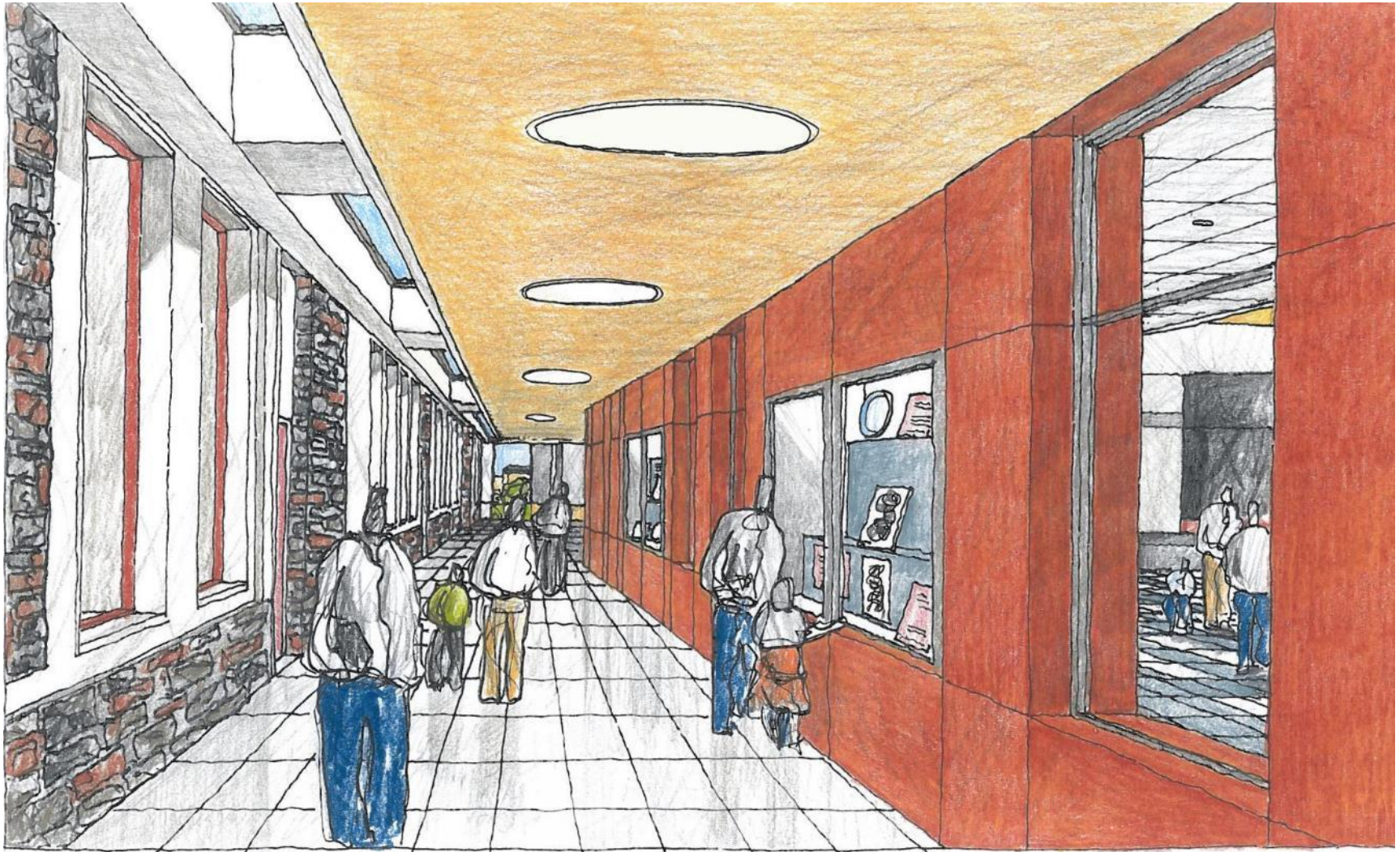
Classroom and Collaborative Space Cluster



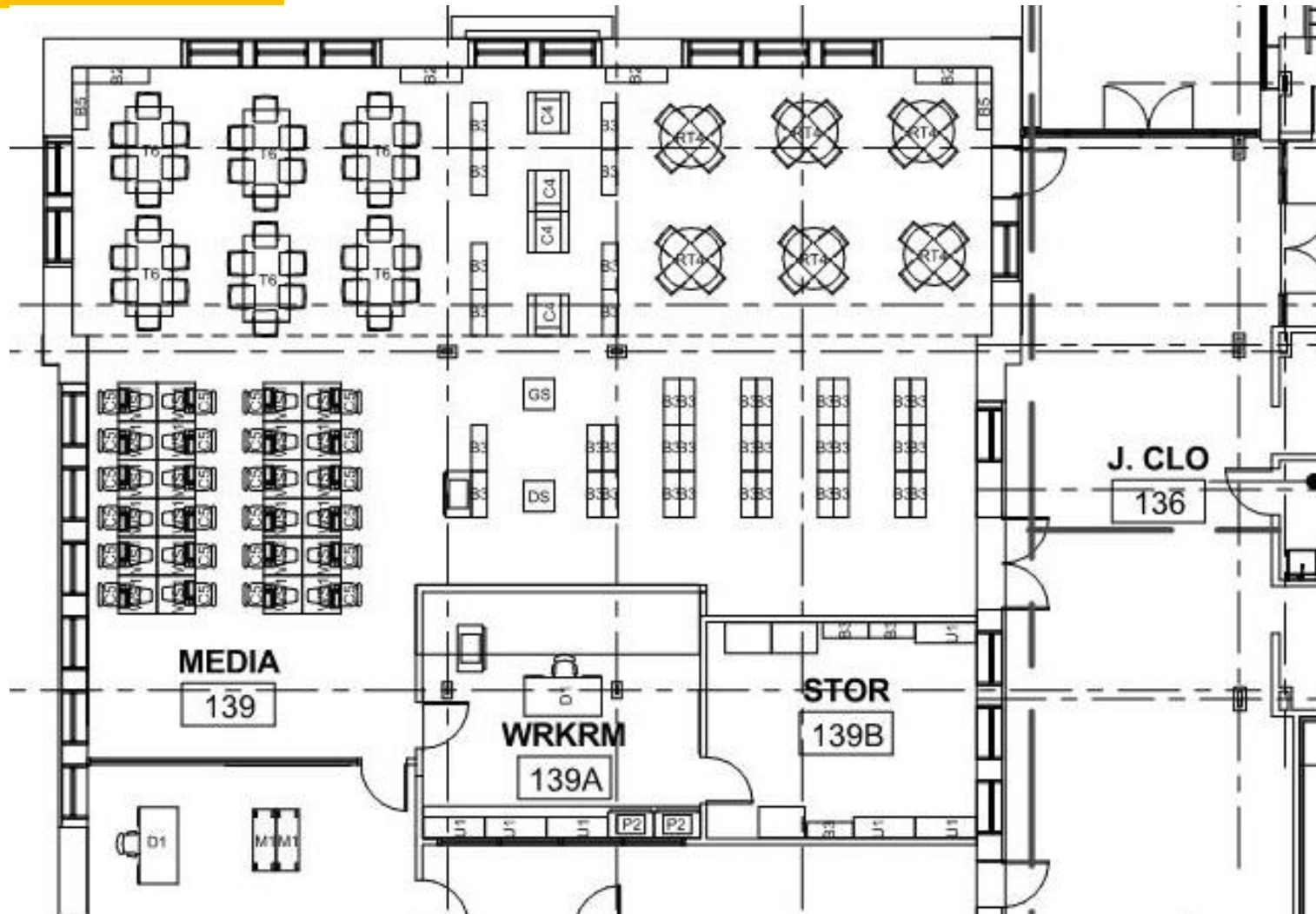
Cafetorium & Lobby



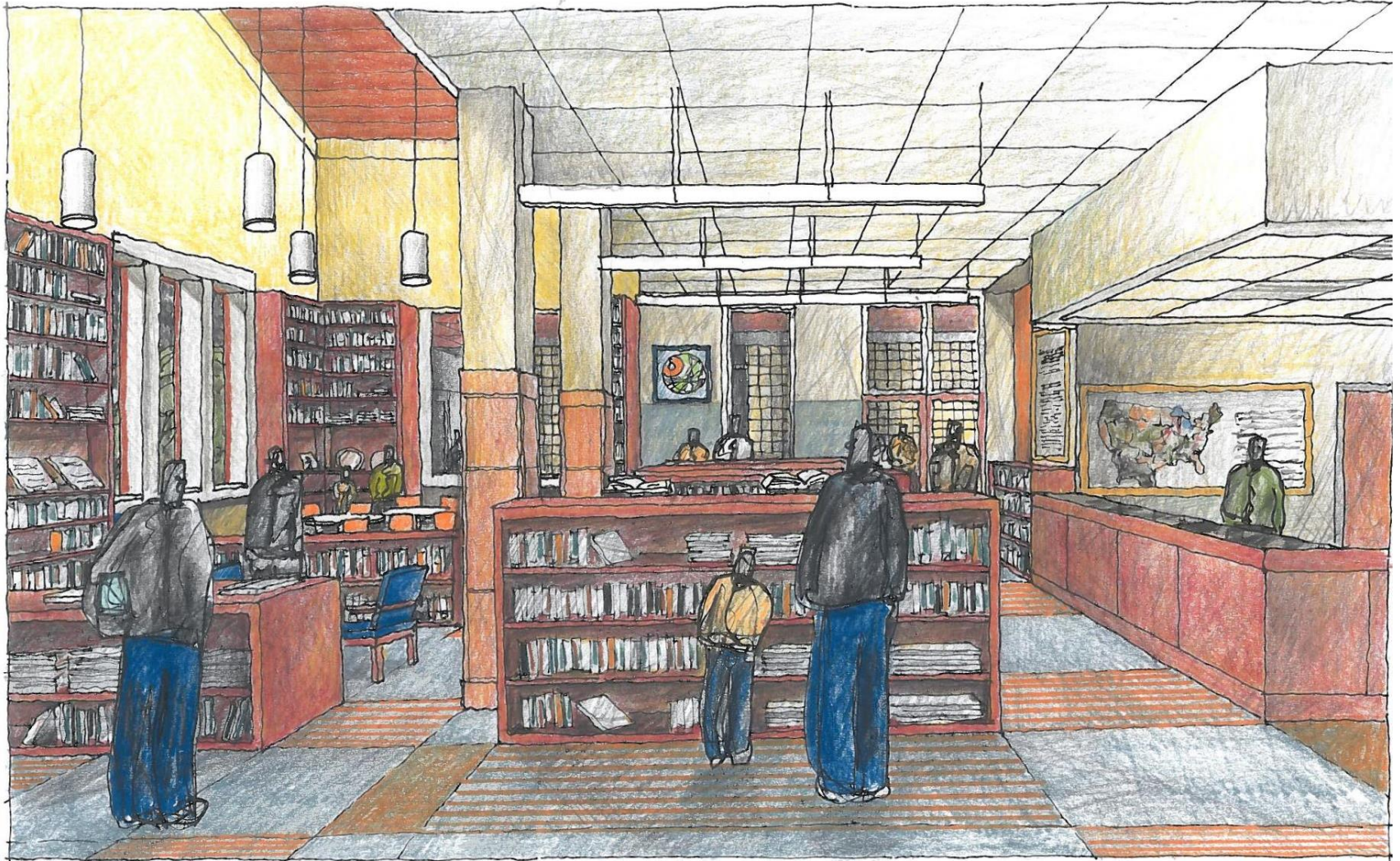
Interior View - Cafetorium



Interior View - Lobby



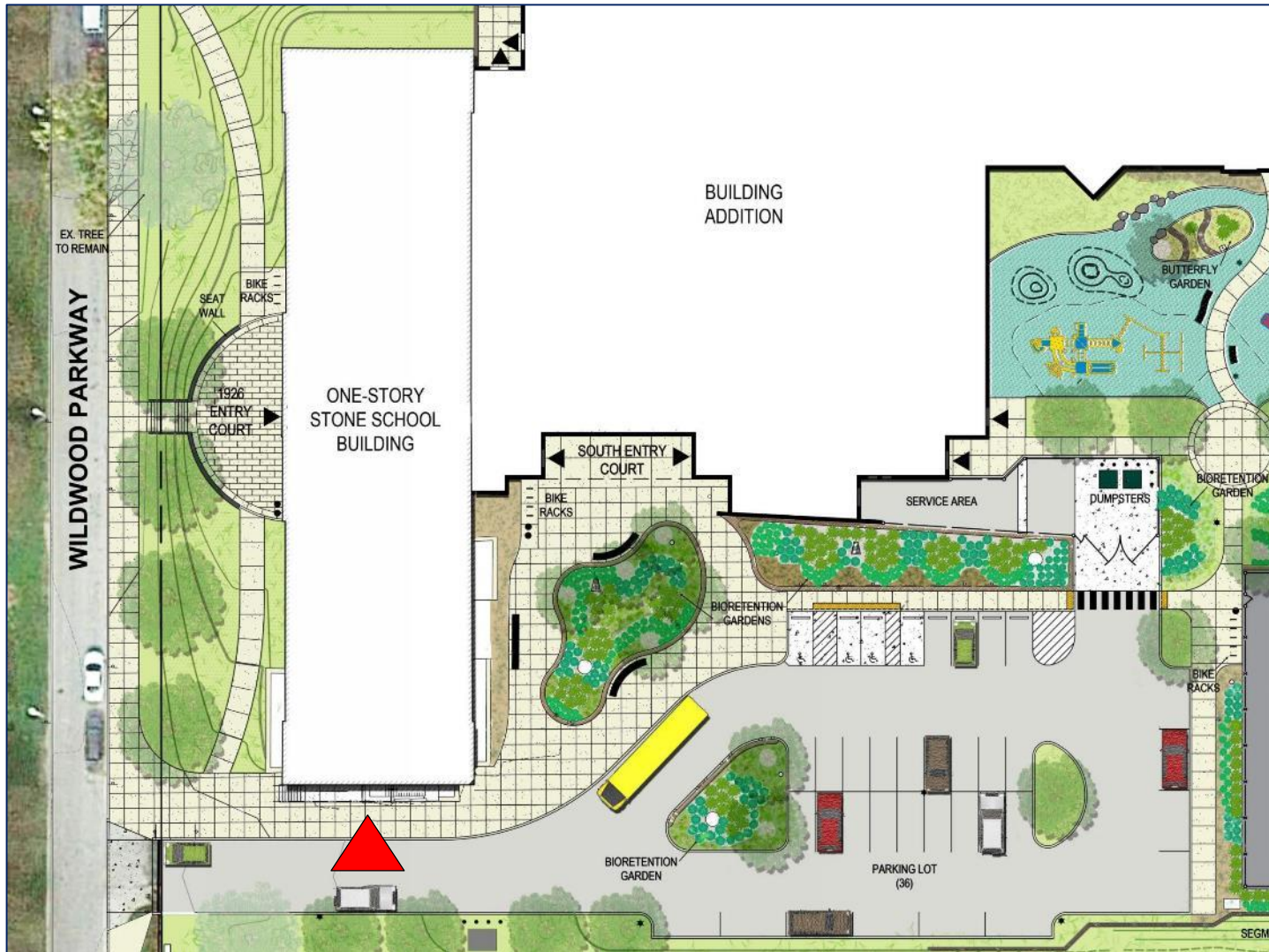
Media Center



Interior View - Media Center

Community Space

Family Resource Suite <i>(Parent volunteers, family meeting space, community school coordinator)</i>	Family Resource Room
	Office
	Toilet
Out of School Time Support	Storage
	Pantry
	Office
Services	Pantry
	Personal Care Space (student)
	Laundry (student)
Partnerships and Services	Space for mental health partner
	Flexible space for service to meet student, family and community needs

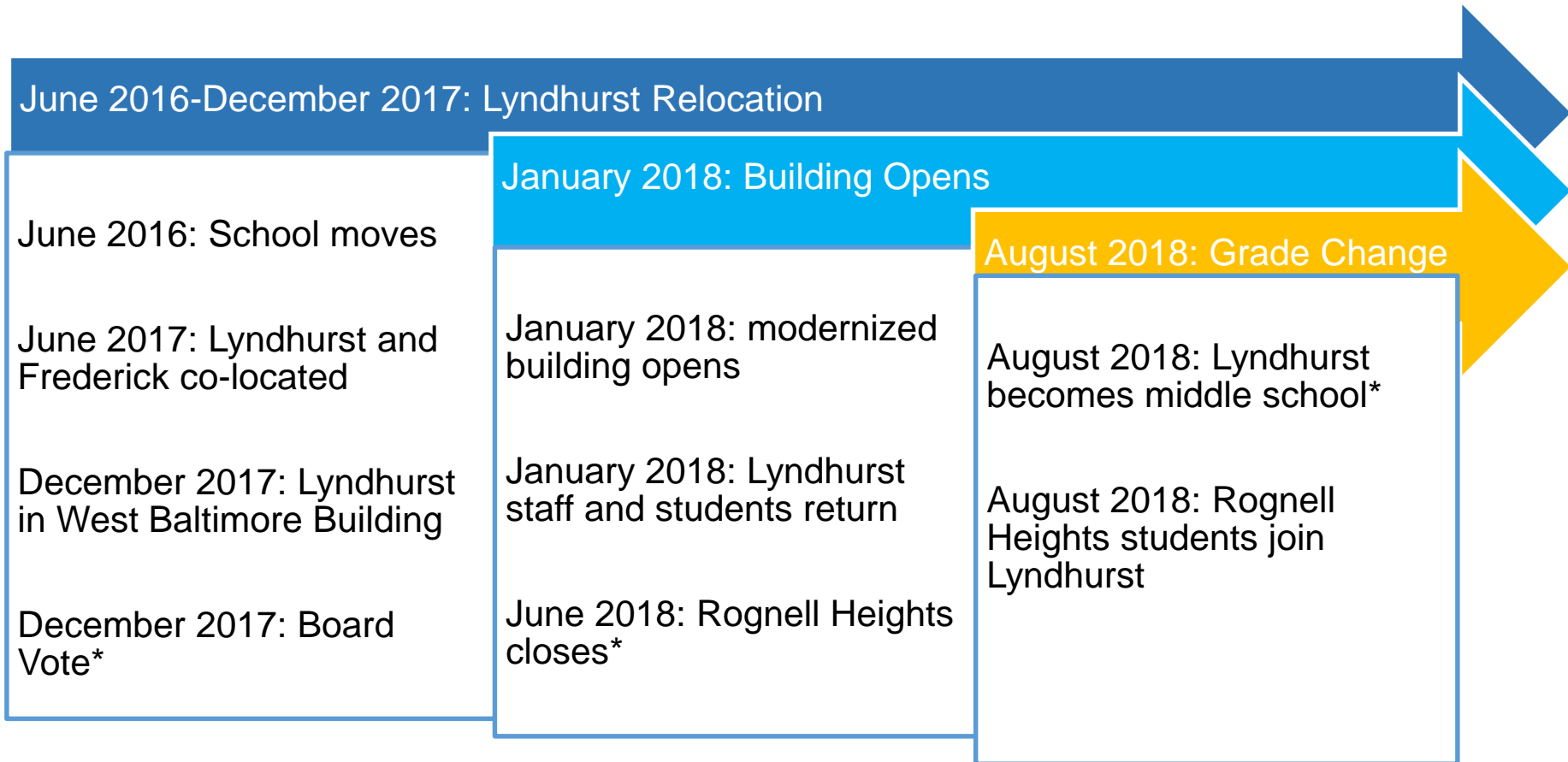


Community Entrance



Community Space

Timeline



Timeline & Next Steps

January

- Letters to staff and families
- Relocation discussion with Dr. Lowe

February

- Relocation discussion with staff
- Relocation (transportation) discussion with families, February 17th @ 5:30PM

March

- Construction discussion with Lyndhurst neighbors, March 16th @ 5:30PM
- Family and student address and contact confirmation process

April

- Relocation discussion with families, April 20th @5:30PM

May

- Construction discussion with neighbors, May 18th @5:30PM

Thank You!



This presentation is brought to you by the
21st Century School Buildings Program.

www.baltimore21stcenturyschools.org

21st Century School Buildings Program

Baltimore City Public Schools
200 East North Avenue Room 407-B
Baltimore MD 21202
(443) 642-4600

Mignon R. Anthony

Executive Director, 21st Century Buildings Program
Baltimore City Public Schools

Gary McGuigan

Senior Vice President, Capital Development Division
Maryland Stadium Authority

Dawn Kirstaetter

Deputy Mayor, Health, Human Services, Education and Youth
City of Baltimore

David Lever

Executive Director, Public School Construction Program
State of Maryland

BALTIMORE CITY
PUBLIC SCHOOLS

