



21st Century School Buildings Plan

SCHOOL Arundel Elementary School

COMMUNITY MEETING Design Development Review | February 3, 2016

BALTIMORE CITY
PUBLIC SCHOOLS



Introductions

Nicole Price

21st Century School Buildings Program
Director of Engagement
City Schools

Todd Niefeld

21st Century School Buildings Program
Senior Project Manager
City School Partners

Design Team

Jerryn McCray, Jerryn J McCray Architect
Brian Minnich, GWWO inc./ Architects

Agenda

21st Century School Building Plan

- Vision
- Partnership Structure

Timeline

Overview

Design Development Review

Next Steps

Cherry Hill Community Vision

A multi-complex community school campus to:

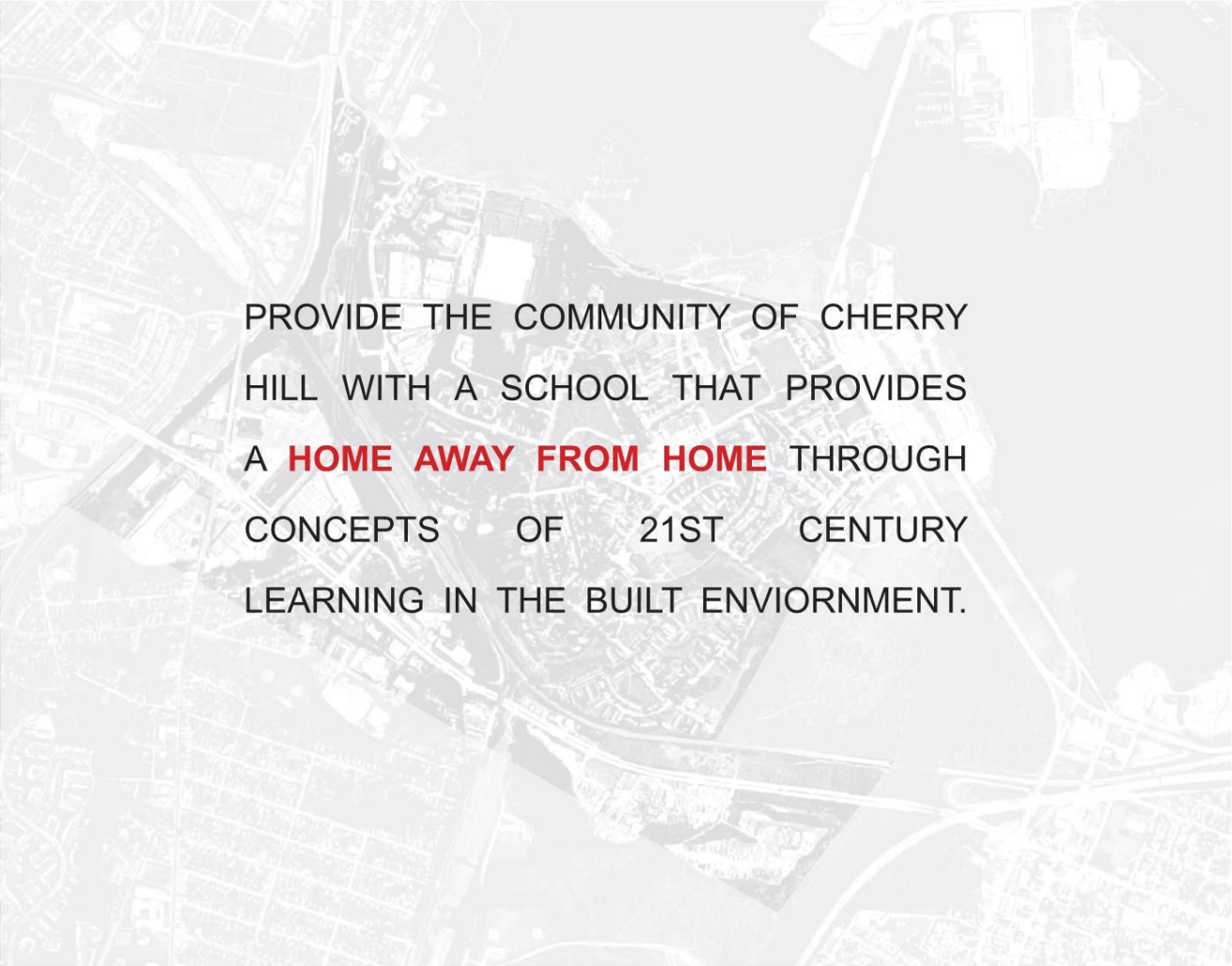
- Meet the extra-curricular and academic needs of students and community
- Increase collaboration and coordination between Cherry Hill Schools
- Shared partnerships among the high, middle and elementary schools
- And teacher training area within the school building and enhanced universities partnership

Arundel Elementary Classrooms and Spaces

7 Pre-K classrooms	Media Center
7 Kindergarten classrooms	Cafeteria
14 classrooms for grades 1 and 2	Gymnasium
4 collaborative learning areas	Administrative/Health Suites
2 special education classrooms	Student services
1 elementary science classroom	Judy Center
1 technical education classroom	Early Learning Center
2 music rooms	Community Space
2 art rooms	

Cherry Hill Classrooms and Spaces

18 classroom for grades 3, 4, and 5	1 Foreign Language Lab
18 classrooms for grades 6, 7, and 8	1 Robotics Lab
6 collaborative learning areas	1 Gateway to Technology Lab
3 special education classrooms	1 Media Center
2 middle school PRIDE classrooms	Cafeteria/Auditorium
1 elementary science classroom	Gymnasium
2 middle school science classrooms	Wrestling Room
1 technical education classrooms	Administrative/Health Suites
2 music rooms	Student Services
2 art rooms	Community Space

An aerial photograph of a city neighborhood, likely Baltimore, showing a grid of streets, residential areas, and some commercial buildings. A specific area in the center is highlighted with a semi-transparent white box, indicating the location of a proposed school. The text is overlaid on this highlighted area.

PROVIDE THE COMMUNITY OF CHERRY
HILL WITH A SCHOOL THAT PROVIDES
A **HOME AWAY FROM HOME** THROUGH
CONCEPTS OF 21ST CENTURY
LEARNING IN THE BUILT ENVIRONMENT.

Design Review

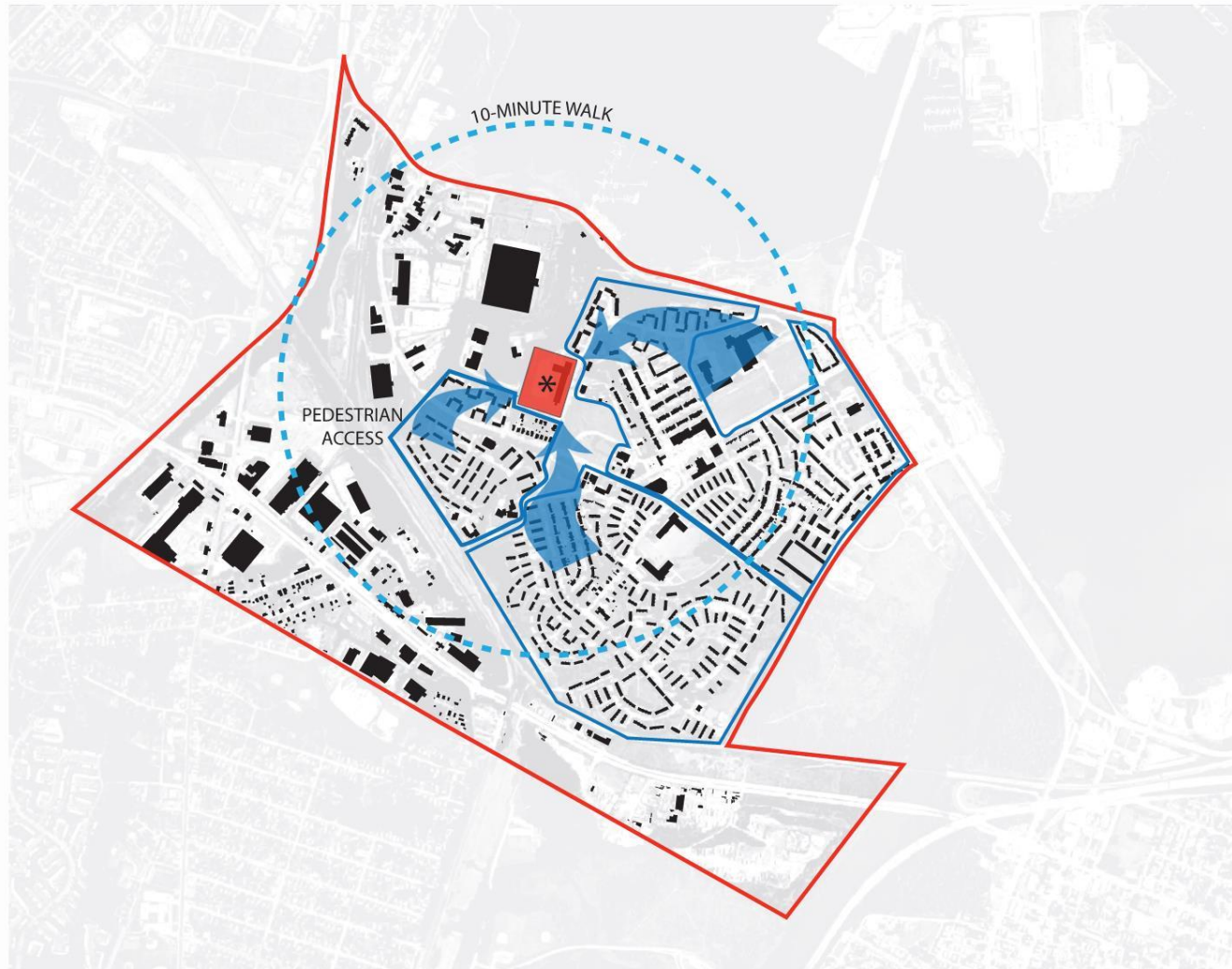






Design Review

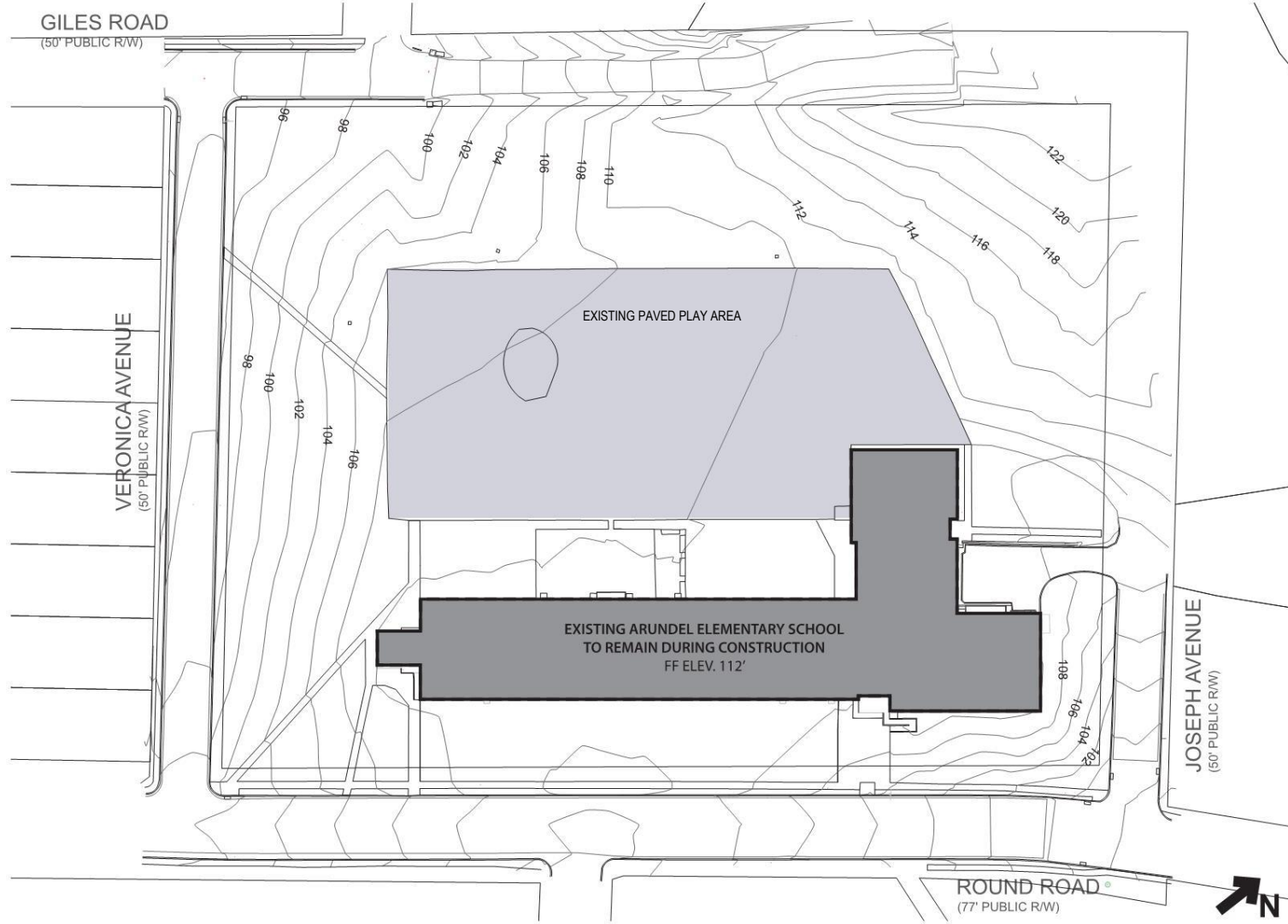




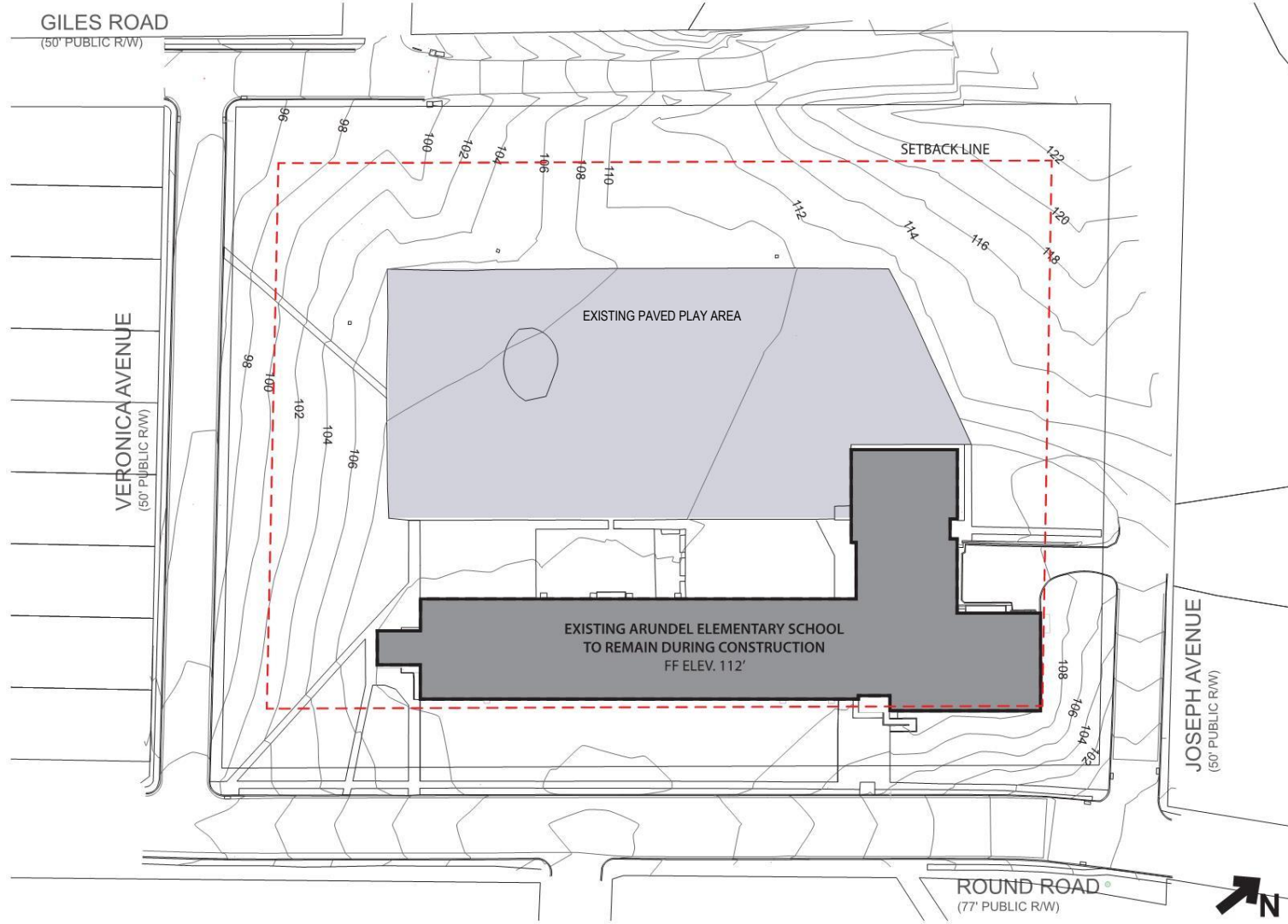




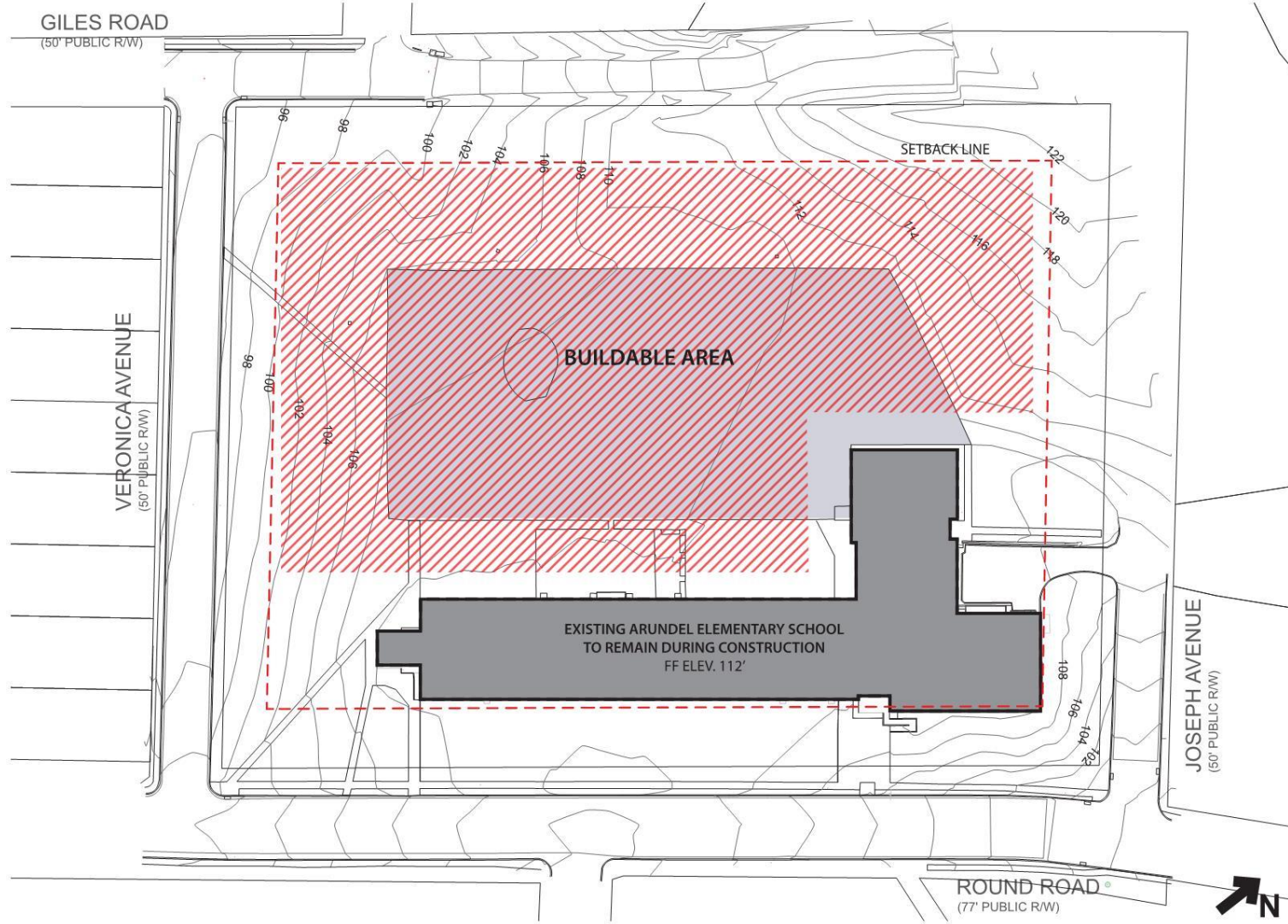
Design Review



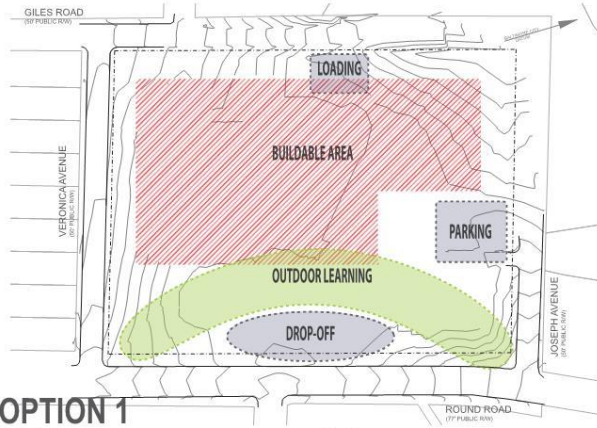
Design Review



Design Review



Design Review



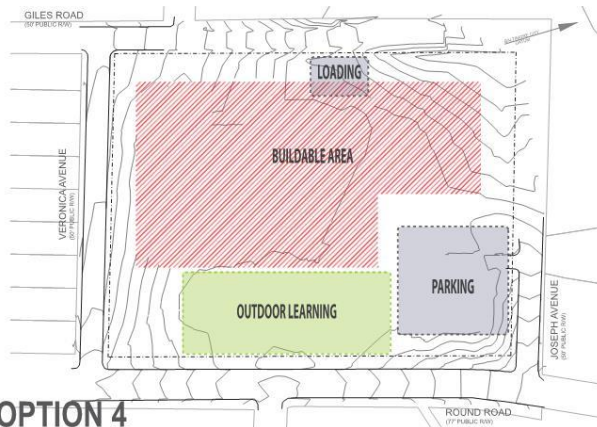
OPTION 1

PROS:

- DROP-OFF LOOP ALONG ROUND RD
- CONNECTS PEDESTRIAN CORNERS
- PEDESTRIANS AND VEHICULAR TRAFFIC ARE SEPARATE

CONS:

- MINIMIZES PARKING



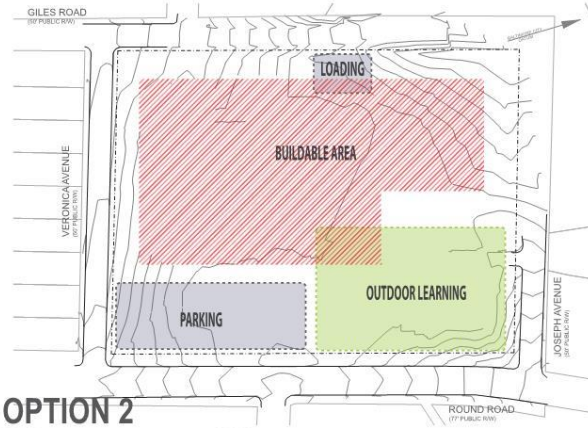
OPTION 4

PROS:

- PARKING AND DROP-OFF COMBINED
- CREATES LARGE CENTER "QUAD"
- BEST LOCATION FOR EXISTING GRADE
- PARKING REMOVED FROM OUTDOOR CLASSROOM

CONS:

- CAR ACCESS IS ALL FROM JOSEPH AVE
- DISRUPTS PEDESTRIAN ACCESS AT JOSEPH AVE / ROUND ROAD CORNER



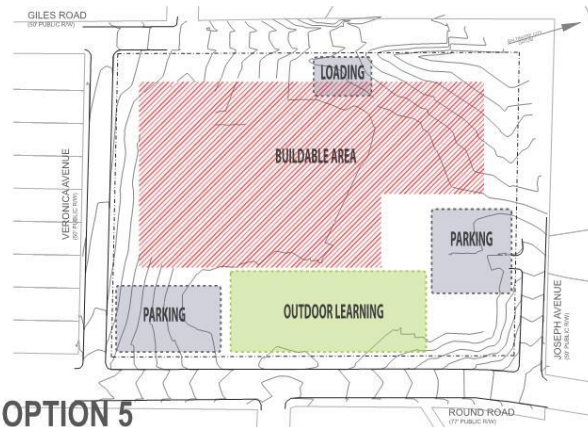
OPTION 2

PROS:

- EASY STREET ACCESS TO PARKING

CONS:

- PARKING IS AT THE LOW POINT
- DROP OFF REMOVED FROM MAIN ENTRANCE
- GRADE IS CHALLENGING
- SOUTHEAST CORNER IS OCCUPIED BY CAR TRAFFIC



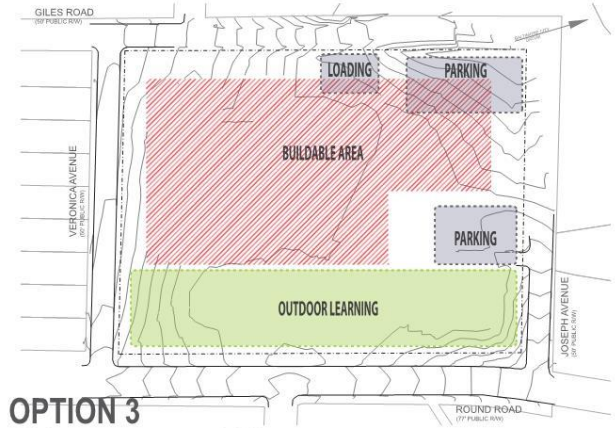
OPTION 5

PROS:

- CREATES OUTDOOR "QUAD" LIKE SPACE

CONS:

- PARKING IS DIVIDED
- PEDESTRIAN CORNERS ARE OCCUPIED BY PARKING
- ADA ACCESS FROM SOUTHEAST PARKING LOT WOULD BE CHALLENGING



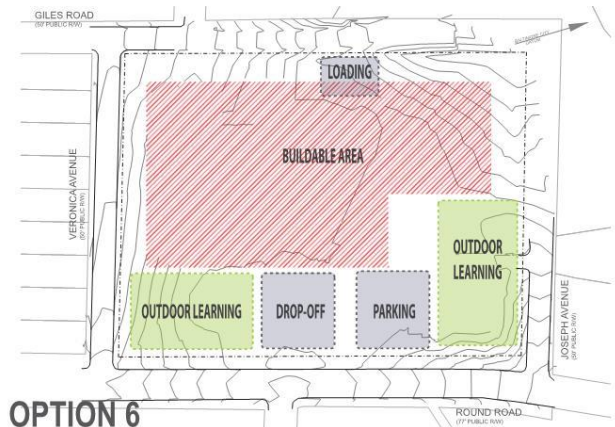
OPTION 3

PROS:

- OPEN FRONT LAWN
- PEDESTRIAN CORNERS ARE FREE

CONS:

- PARKING IS AT THE LOW POINT
- DROP OFF REMOVED FROM MAIN ENTRANCE
- GRADE IS CHALLENGING
- JOSEPH AVENUE HAS TO BE EXTENDED



OPTION 6

PROS:

- CREATES AN AXIS WITH MAIN ENTRY

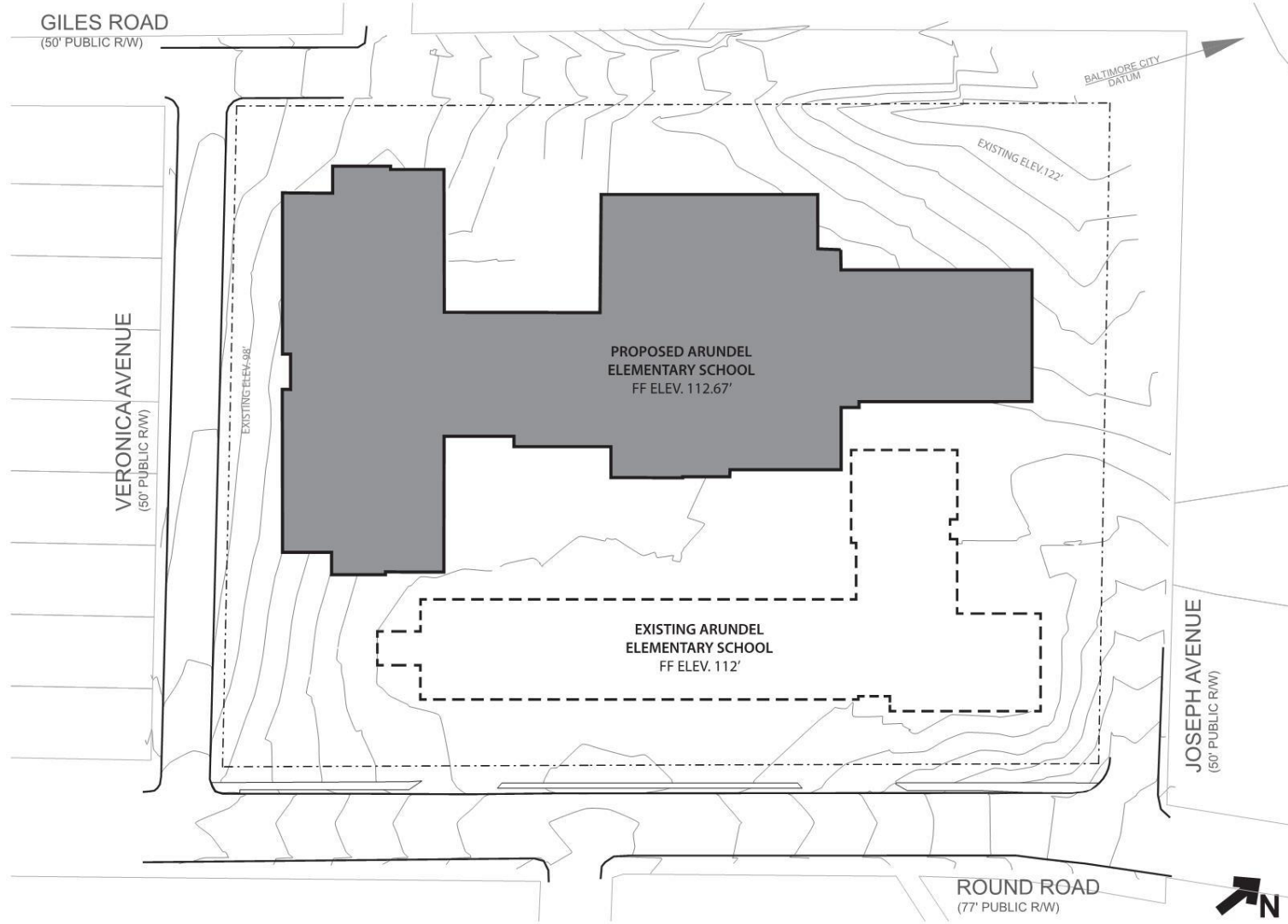
CONS:

- PARKING IS FOCAL POINT OF SITE
- DROP OFF AND PARKING ARE SEPARATE
- DIVIDES SITE

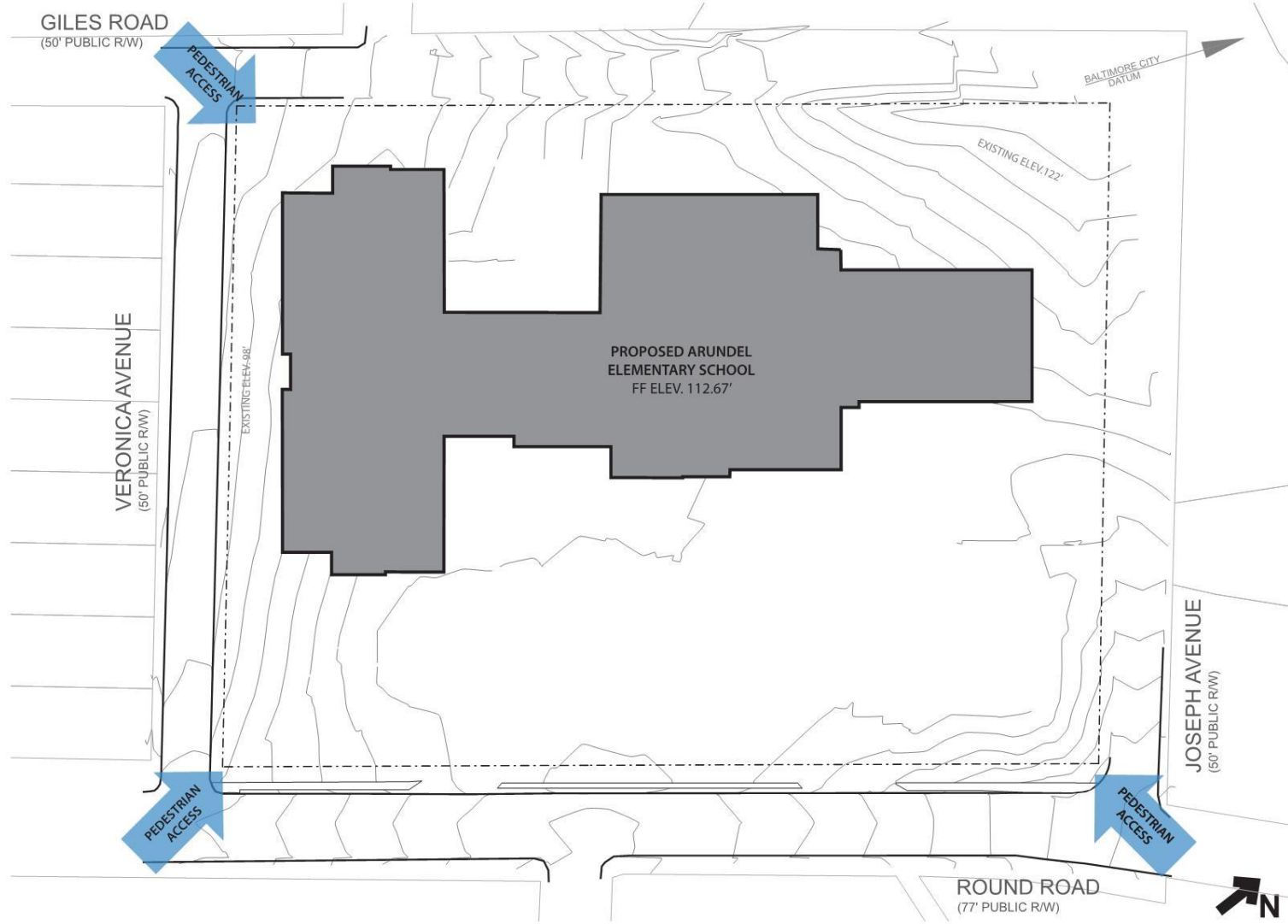
Design Review



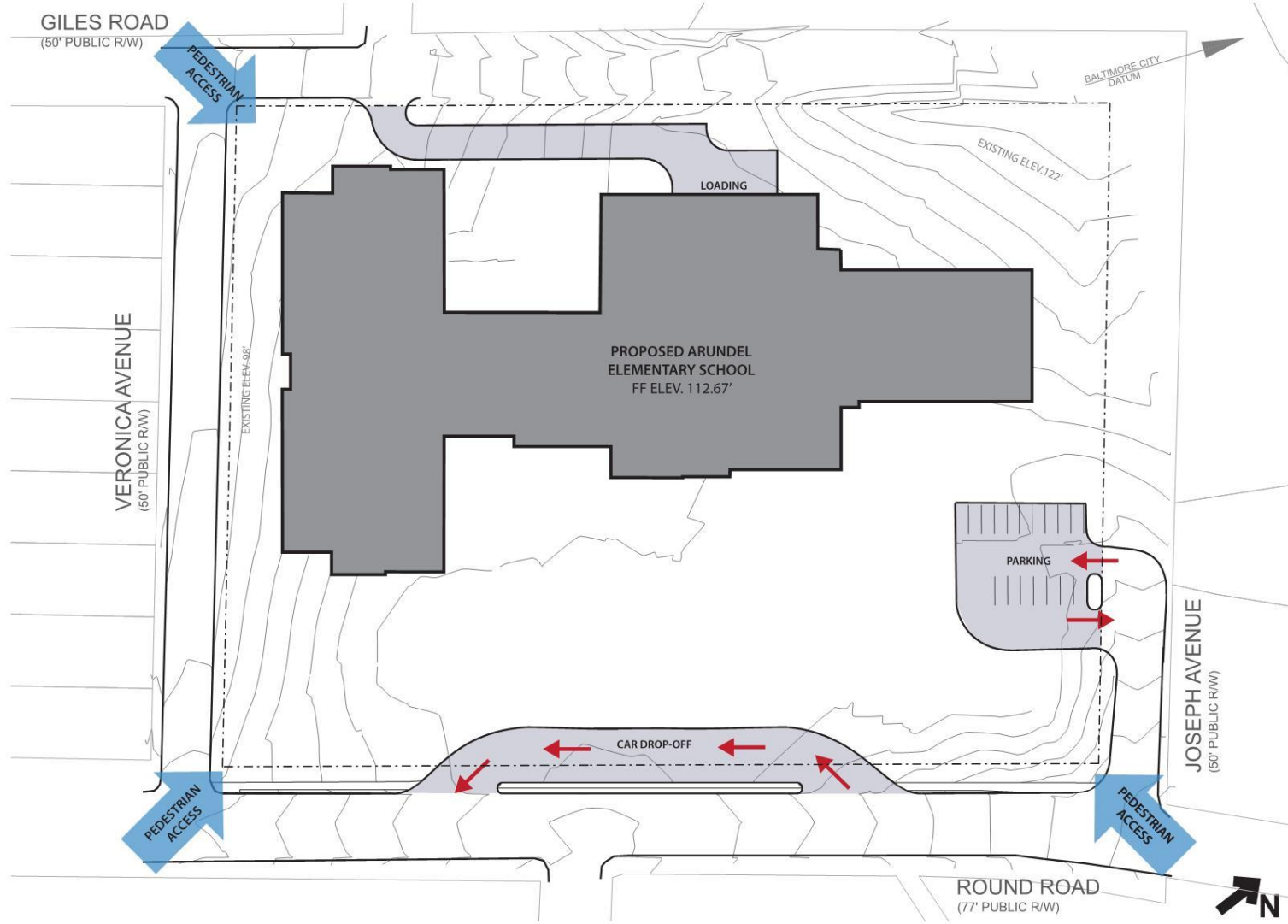
Design Review



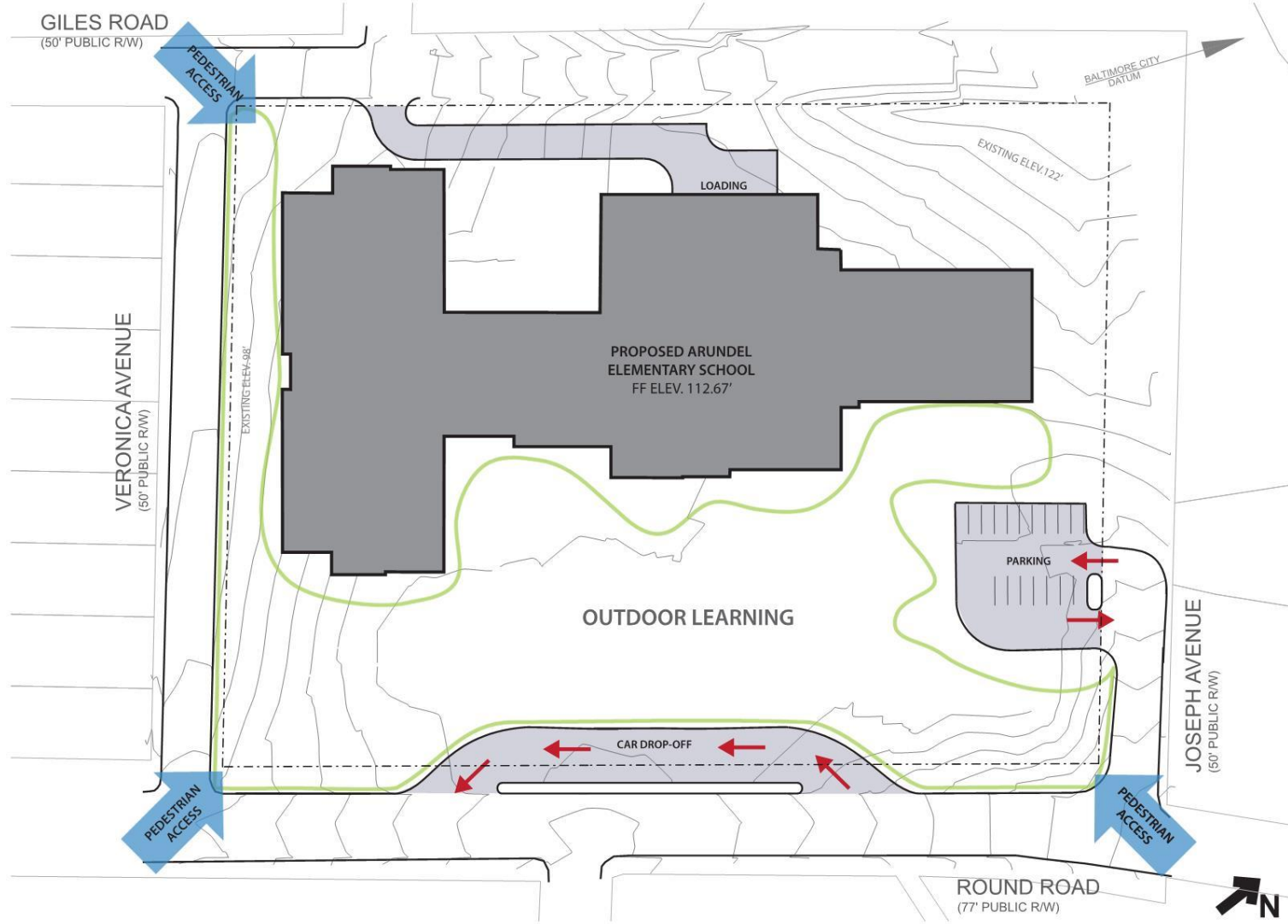
Design Review



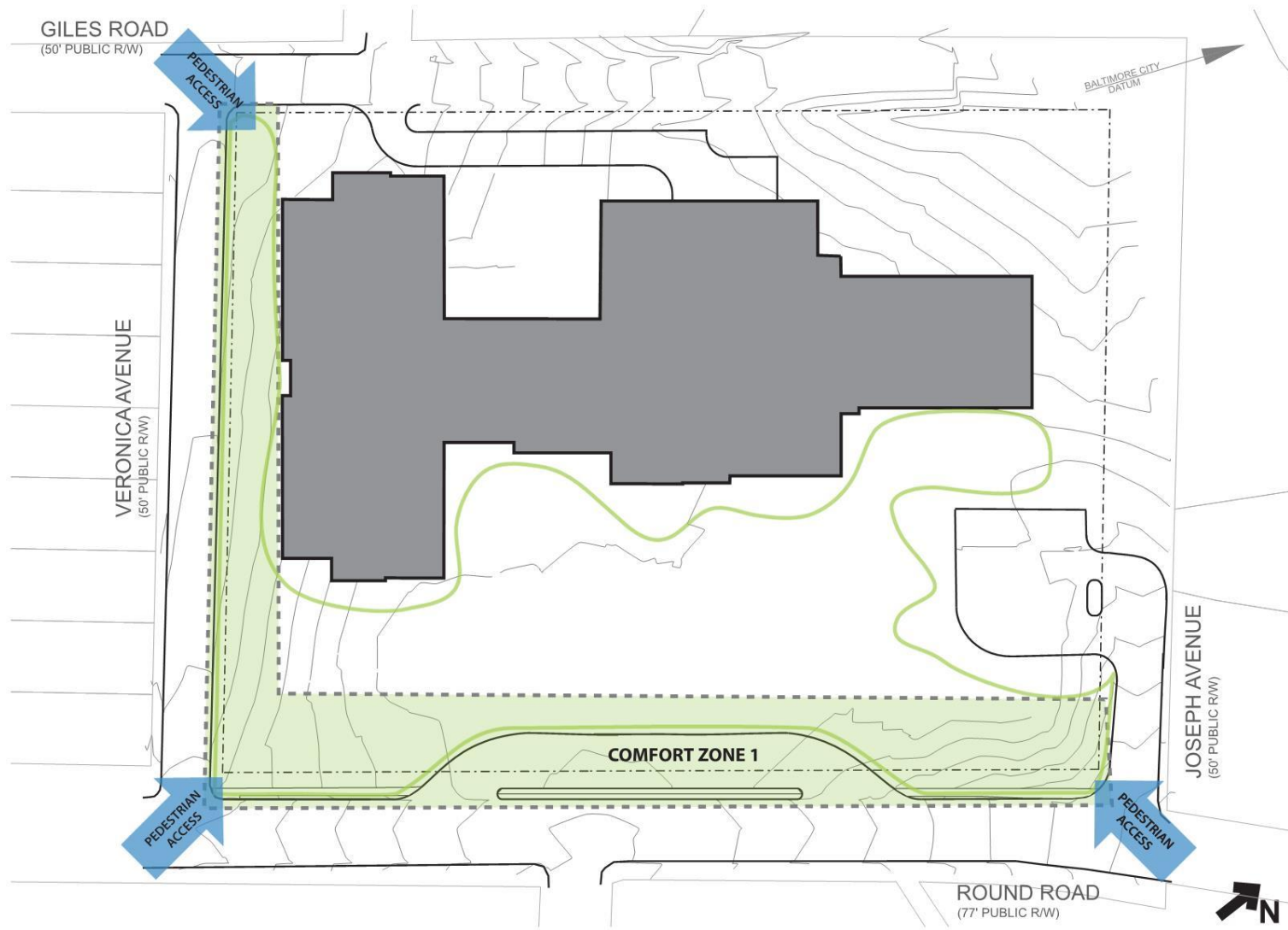
Design Review



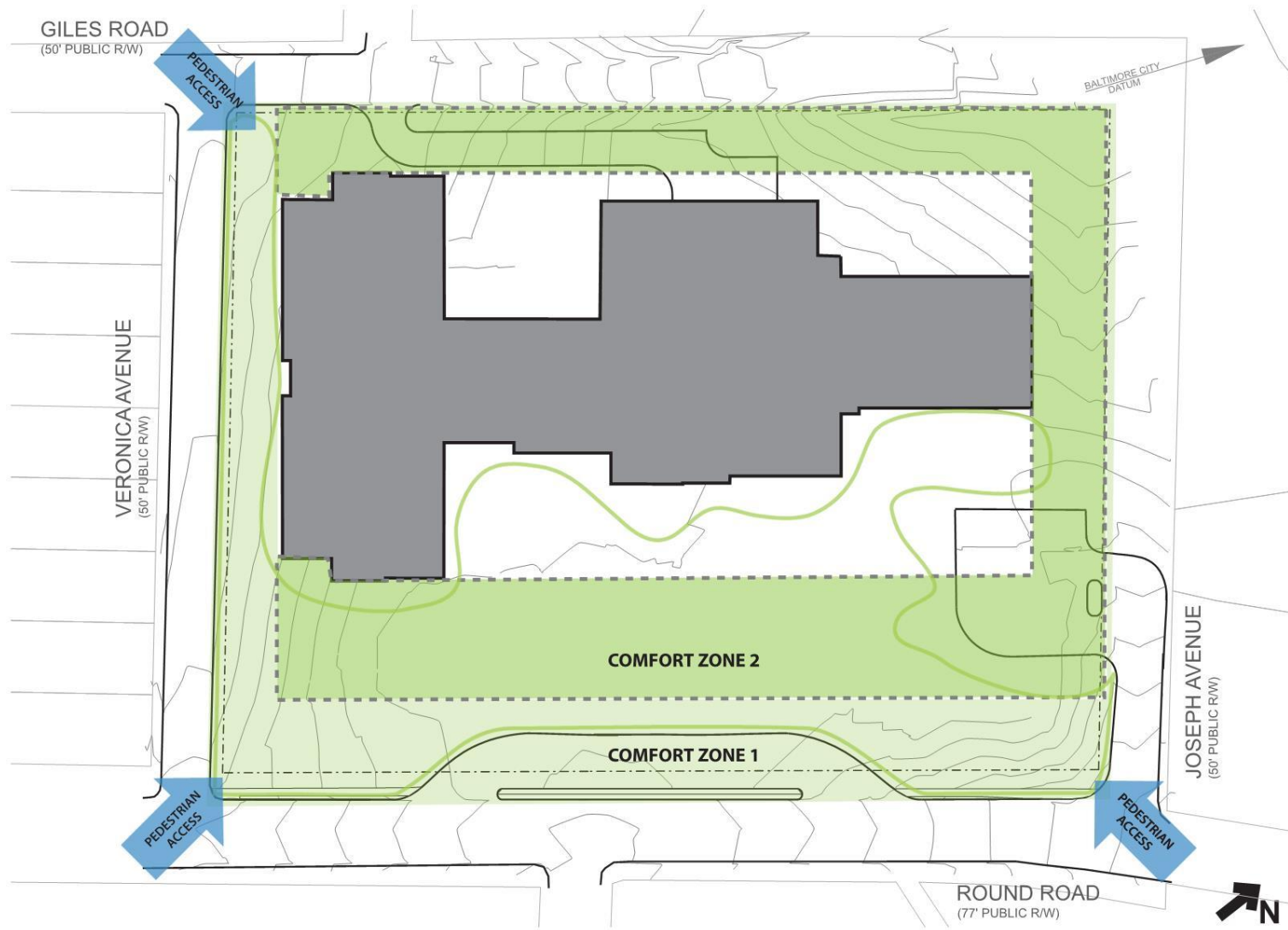
Design Review



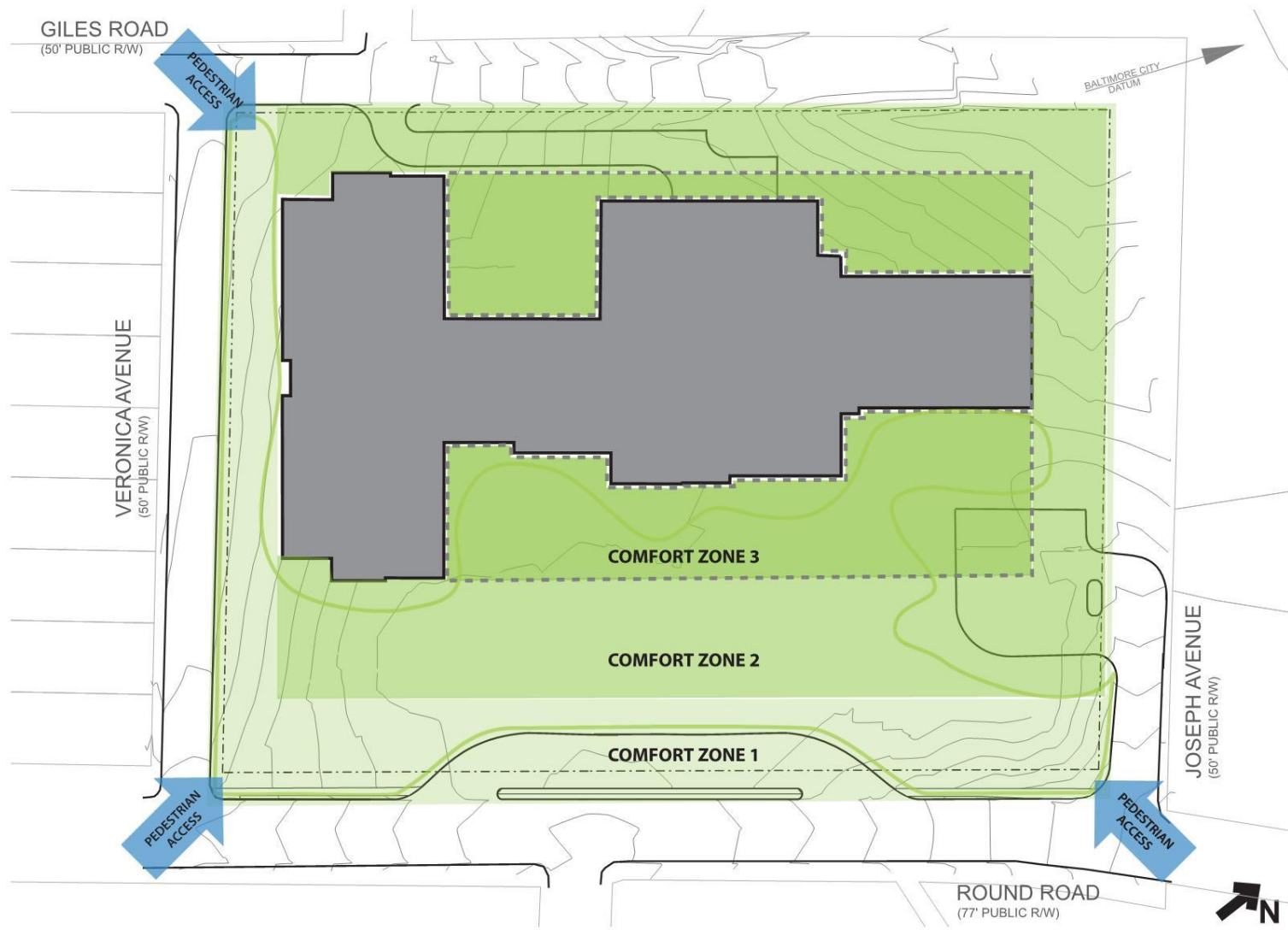
Design Review



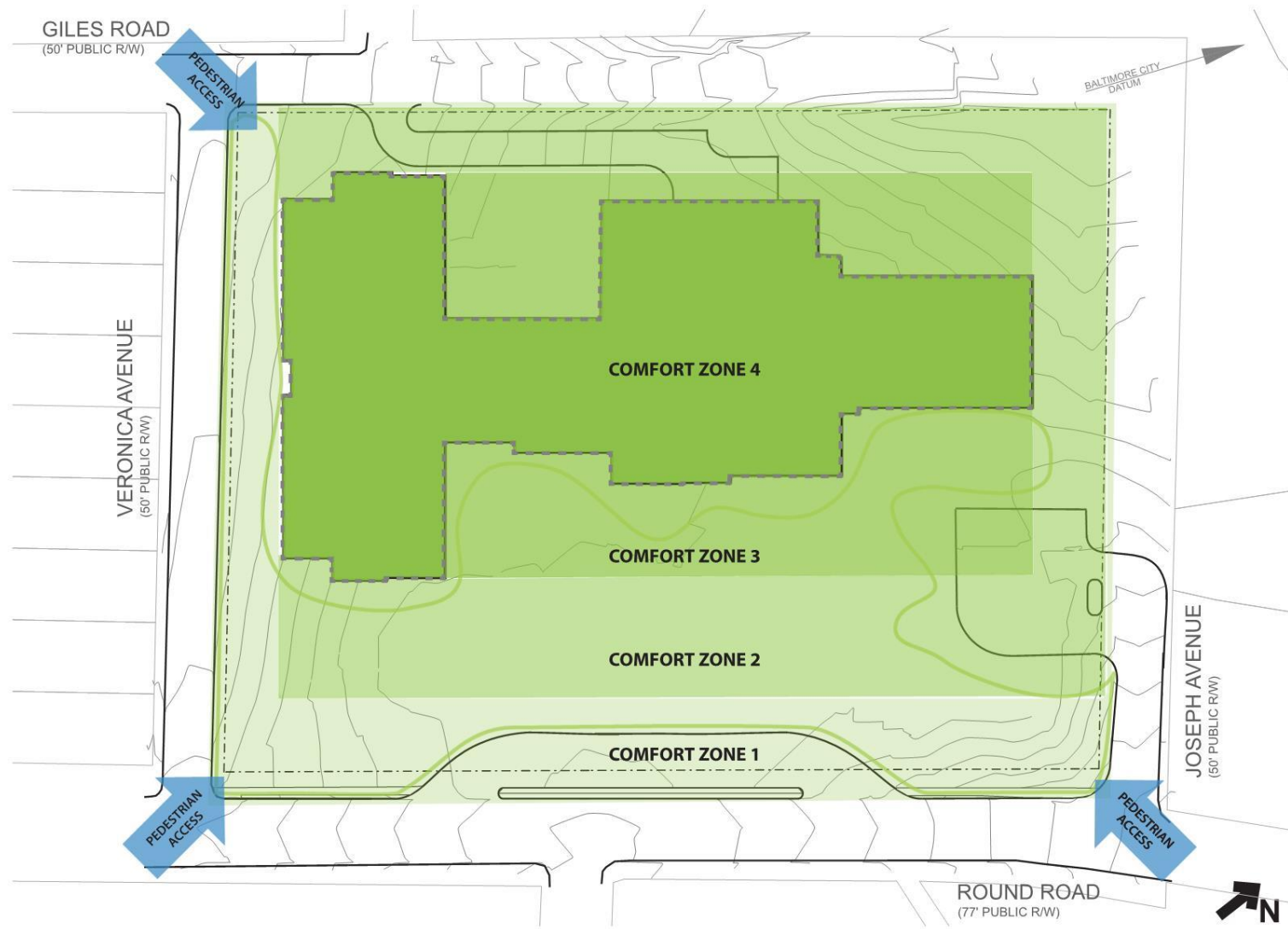
Design Review



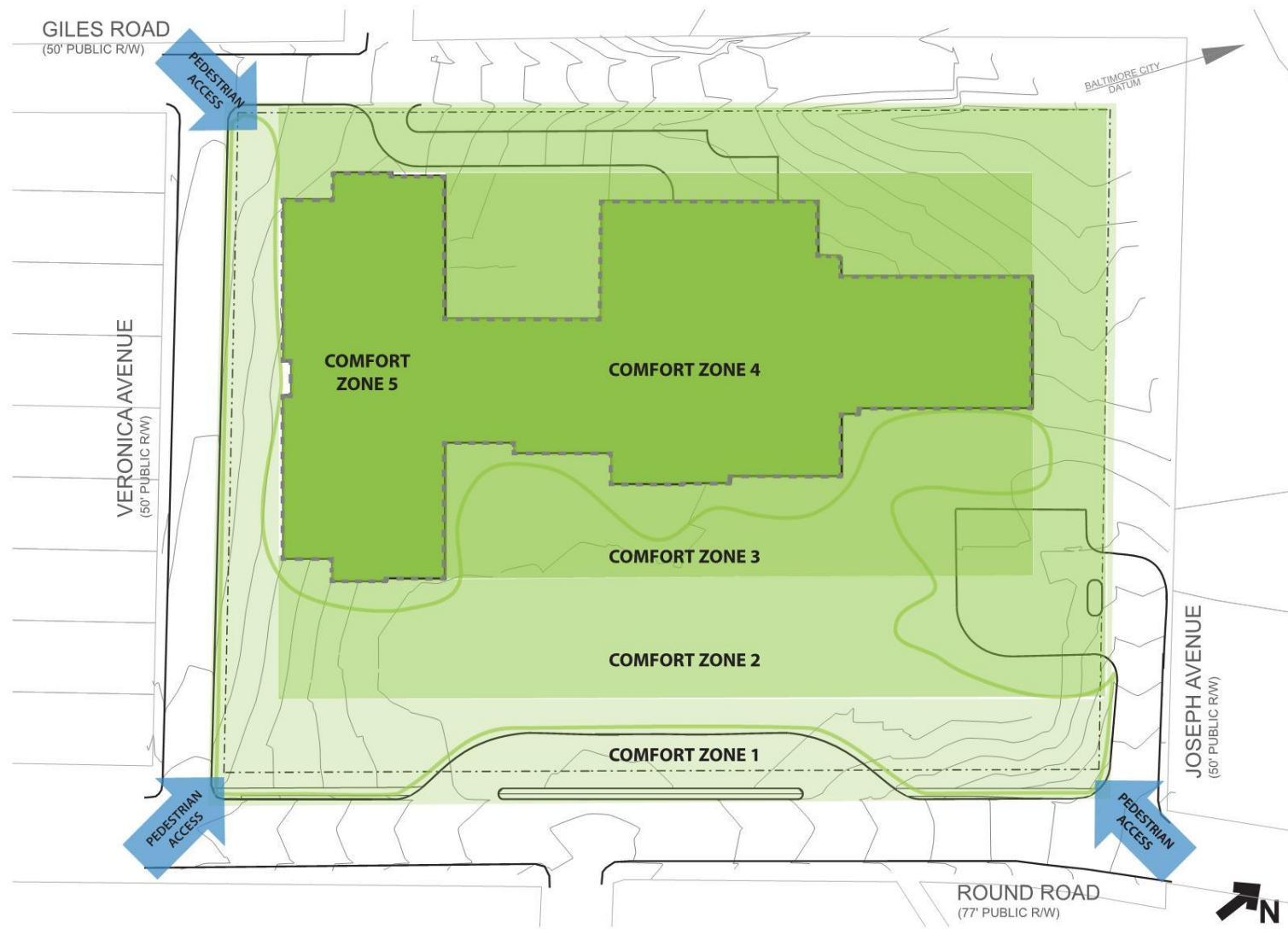
Design Review



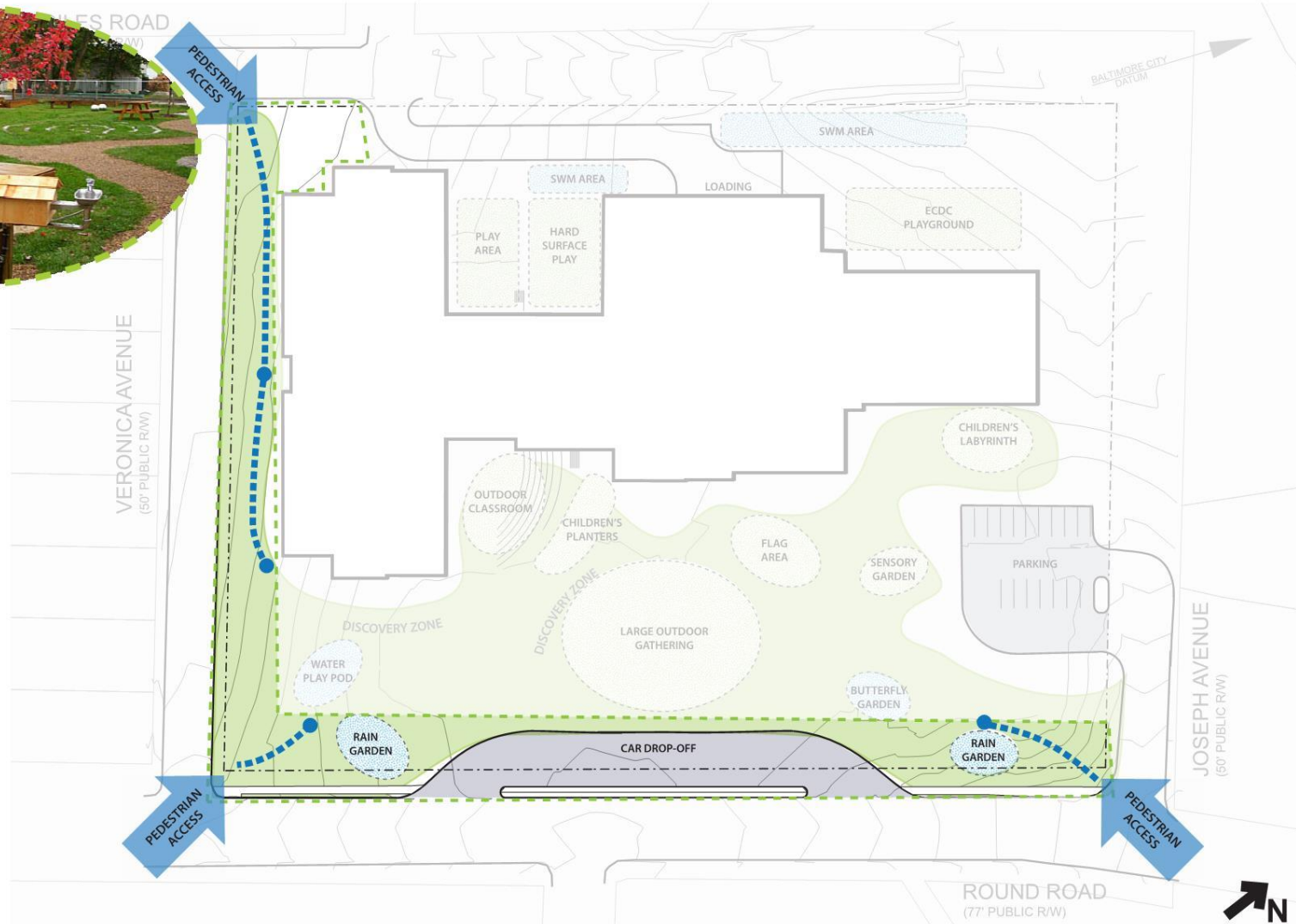
Design Review



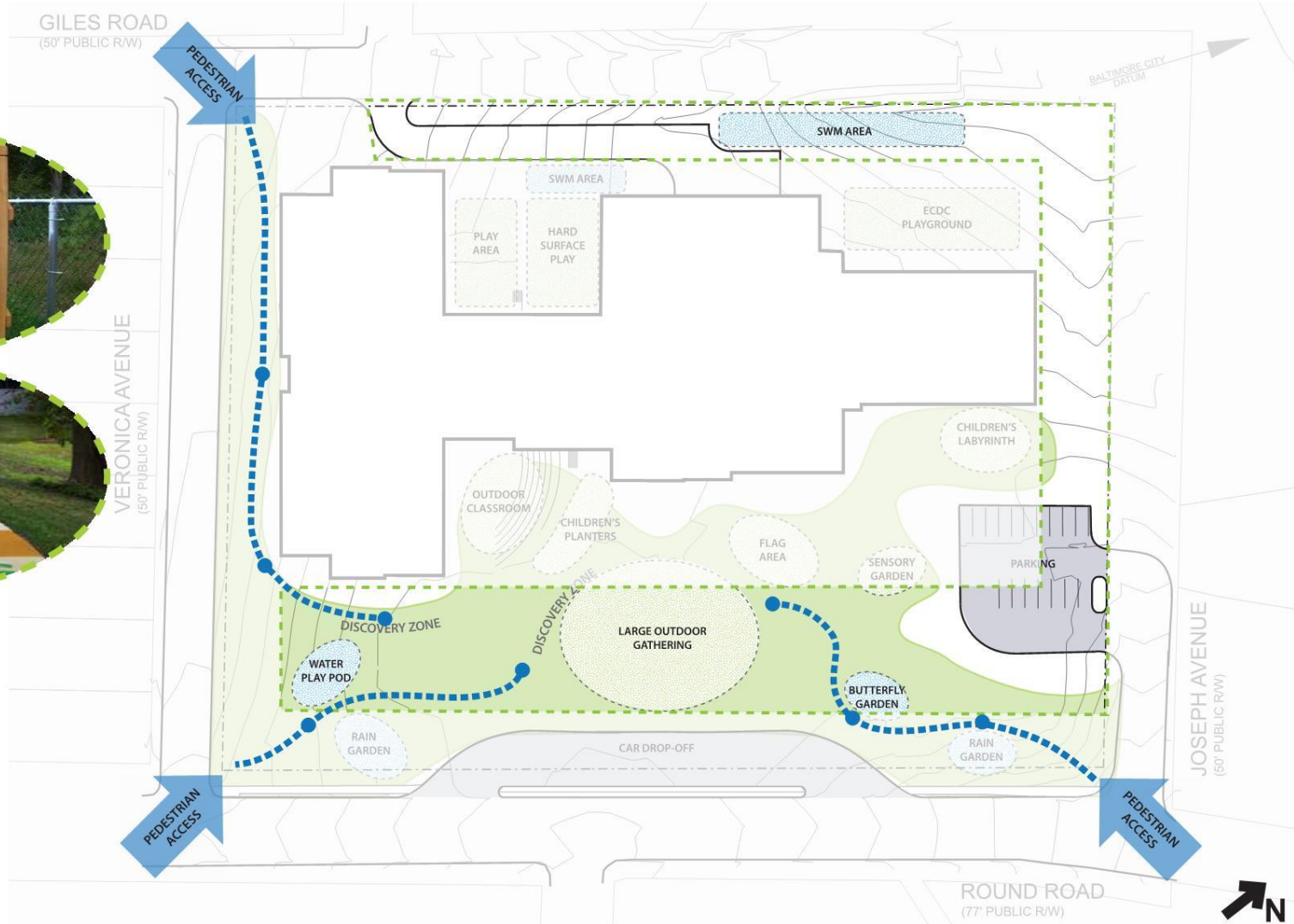
Design Review



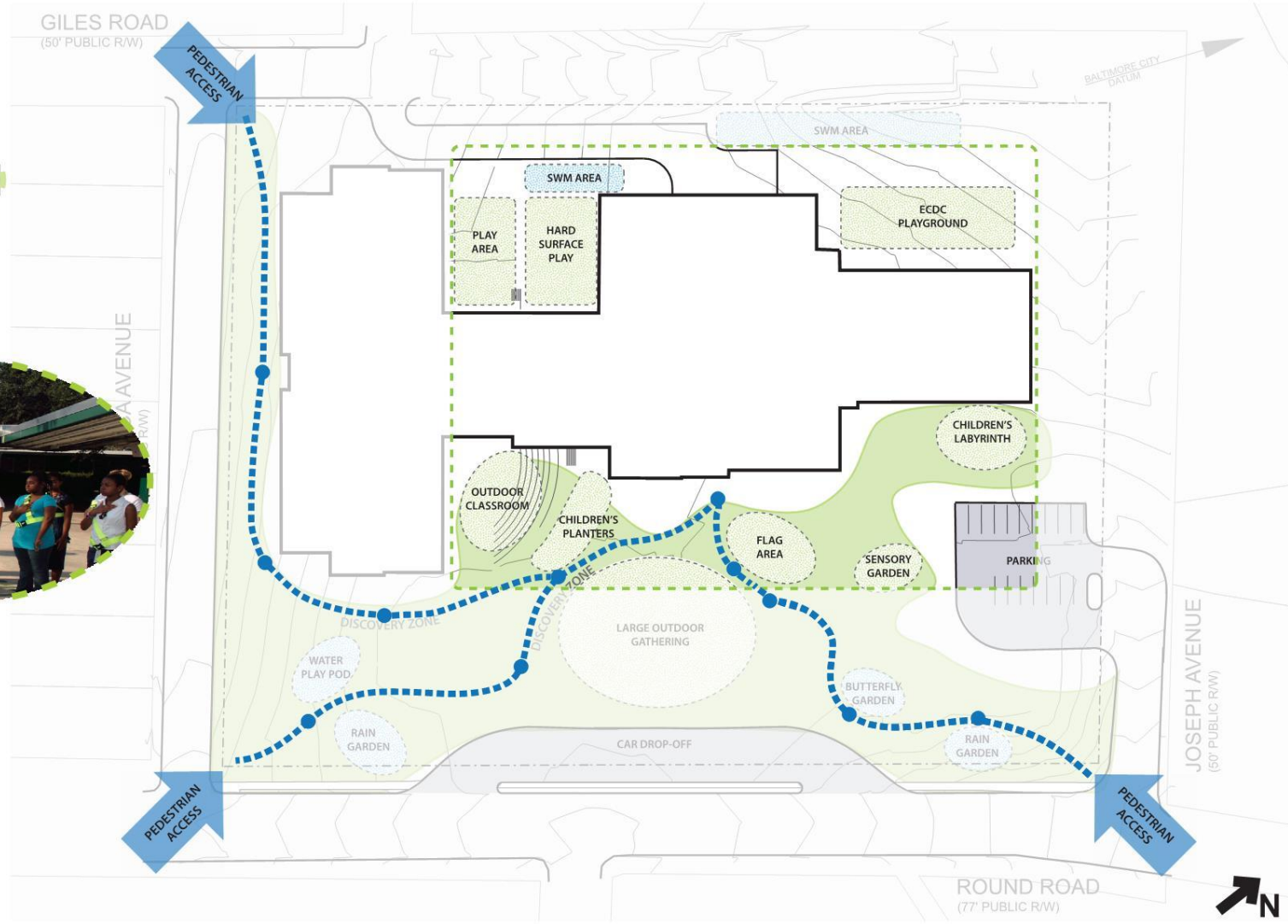
Design Review



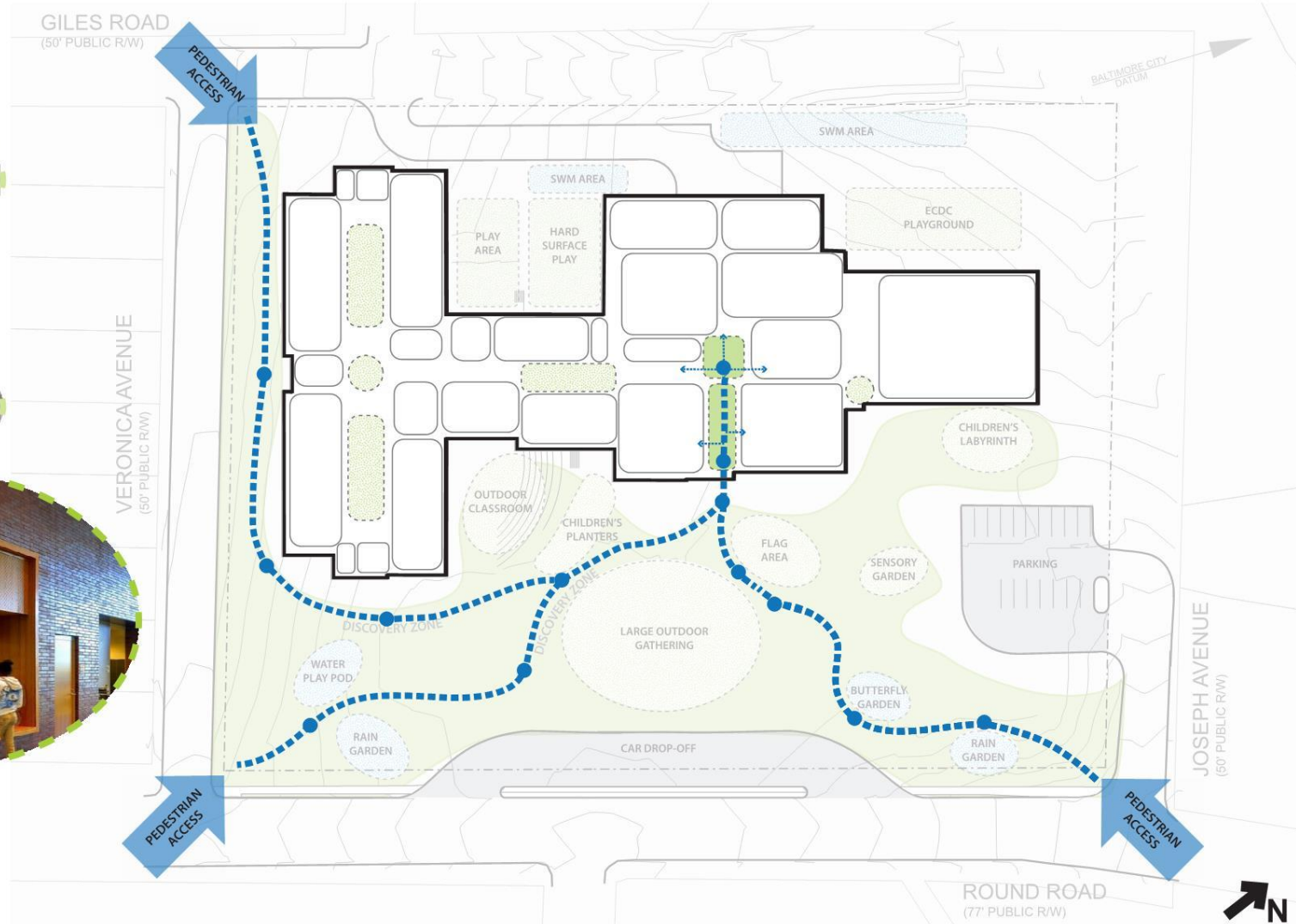
Design Review



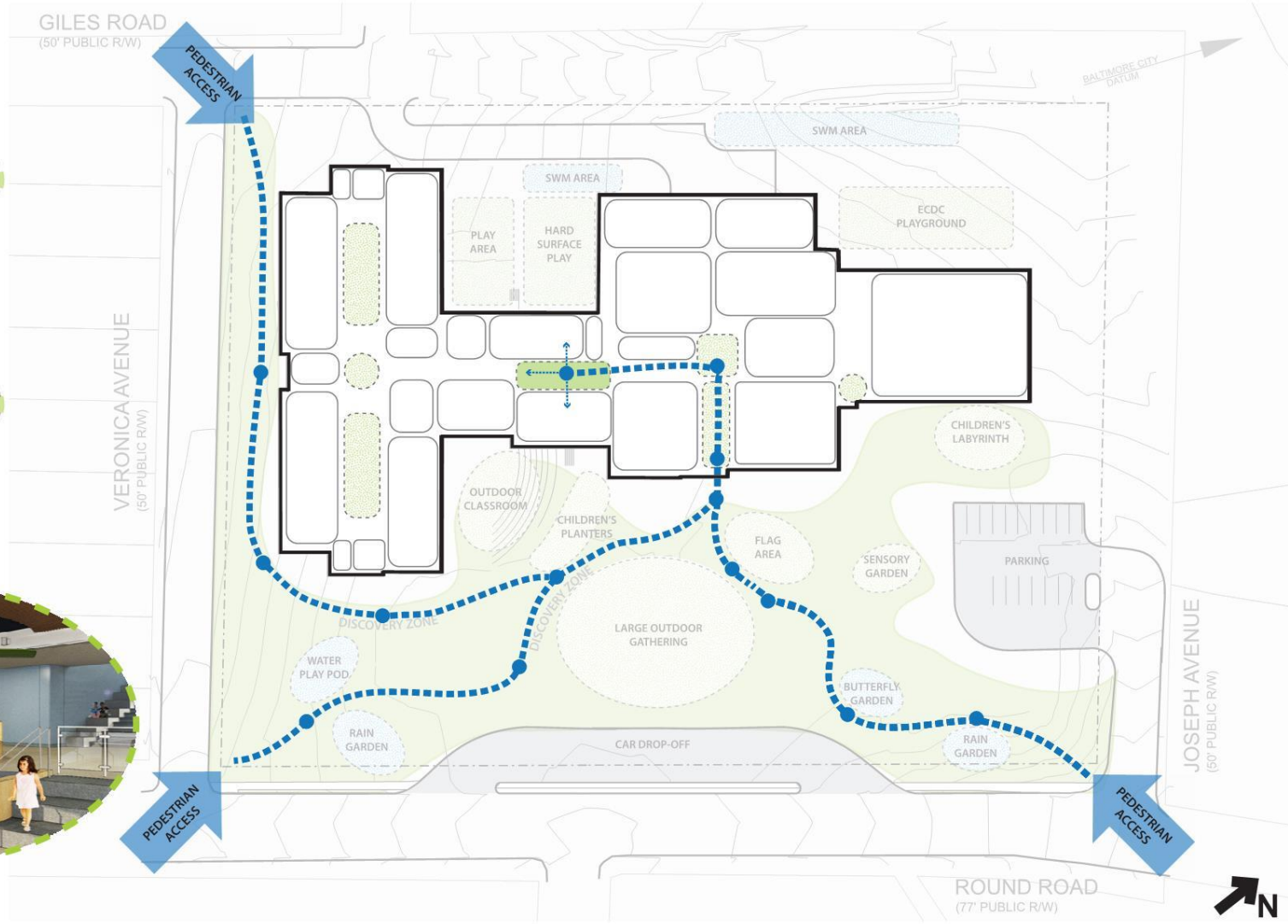
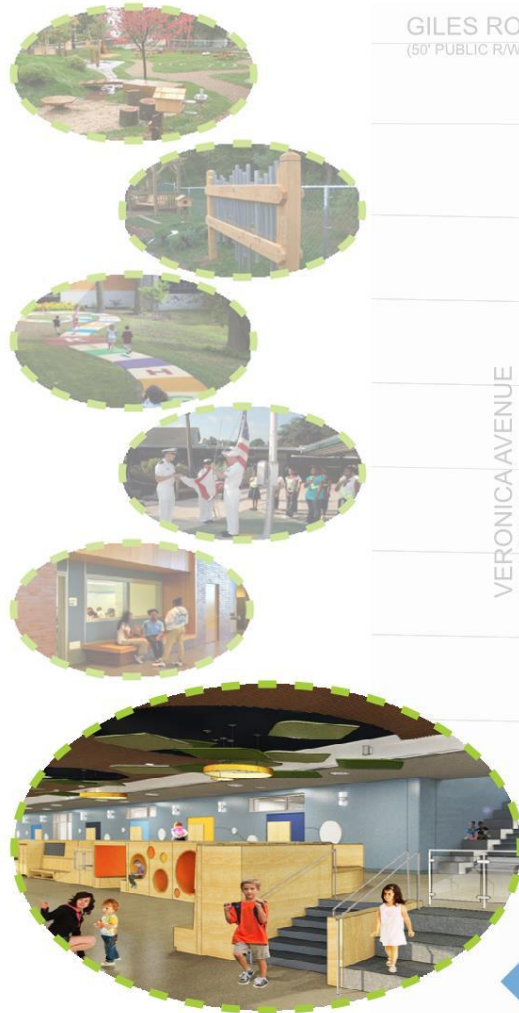
Design Review



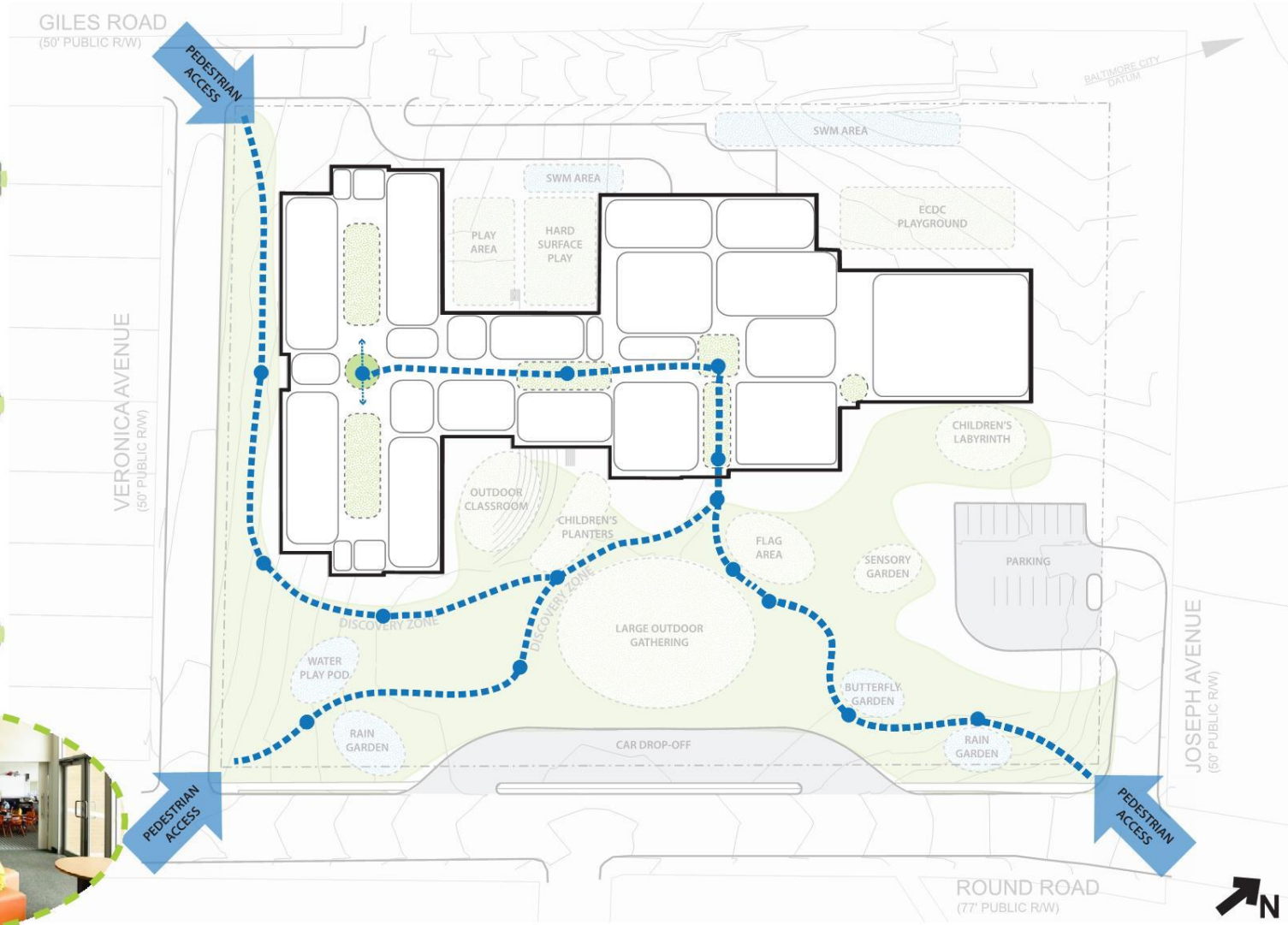
Design Review



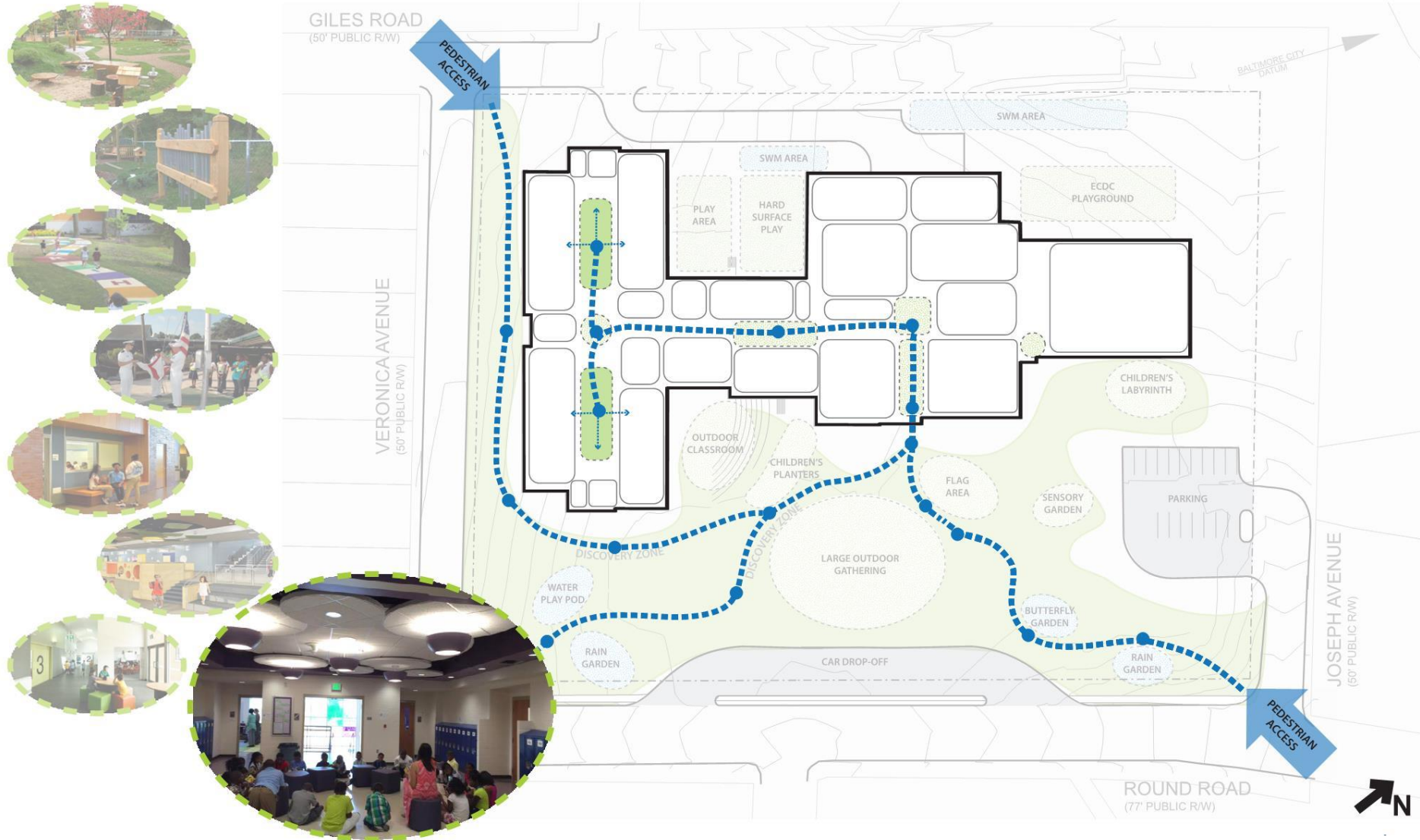
Design Review



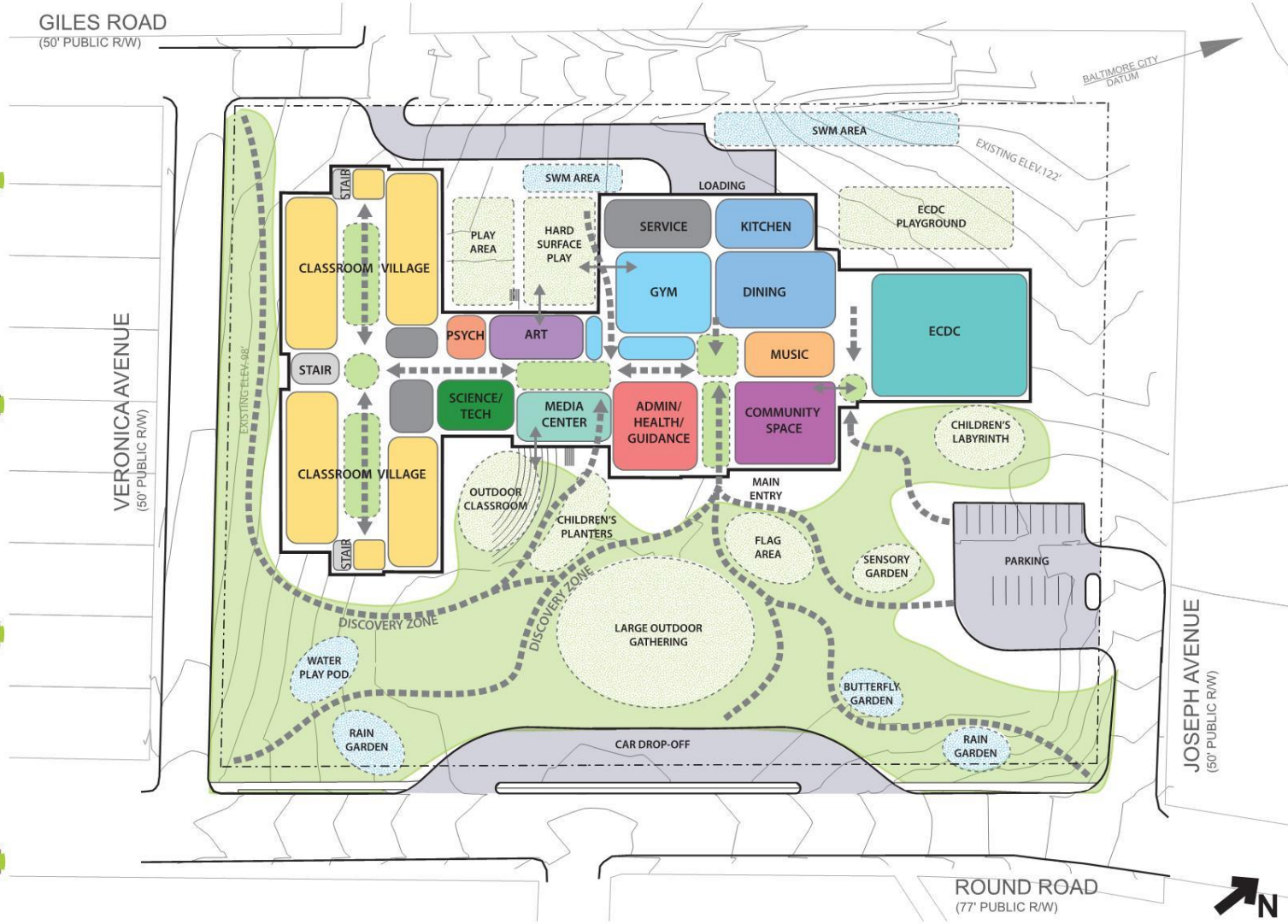
Design Review



Design Review



Design Review



Design Review



Design Review



Design Review



MAIN ENTRY



Design Review



MAIN ENTRY



OUTDOOR CLASSROOM

GILES ROAD
(50' PUBLIC R/W)

VERONICA AVENUE
(50' PUBLIC R/W)



Design Review



Design Review



Design Review



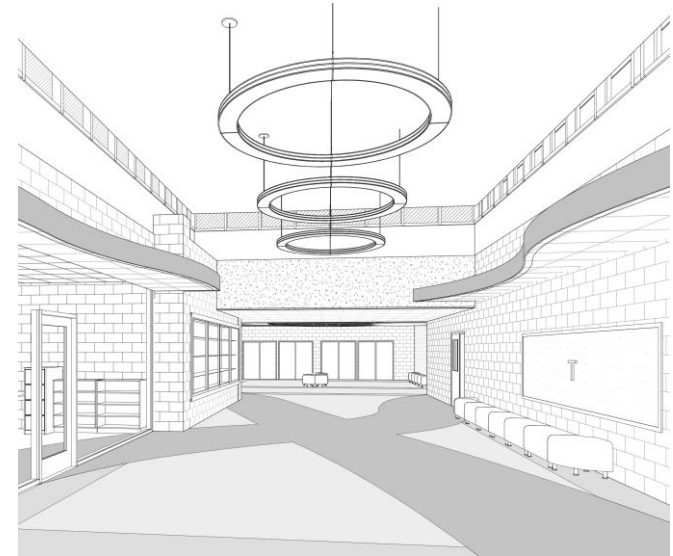
Design Review



Design Review



Design Review



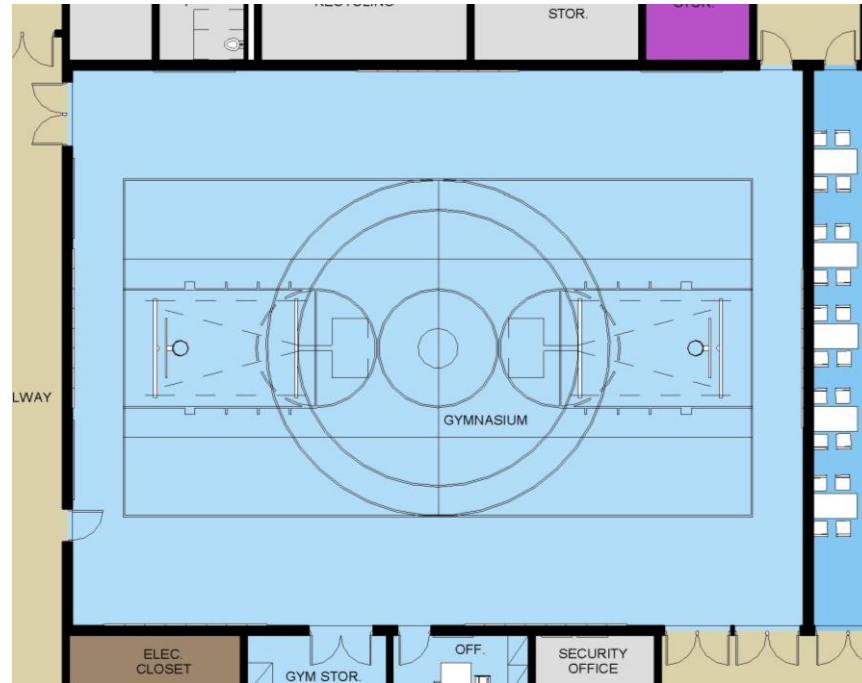
Design Review



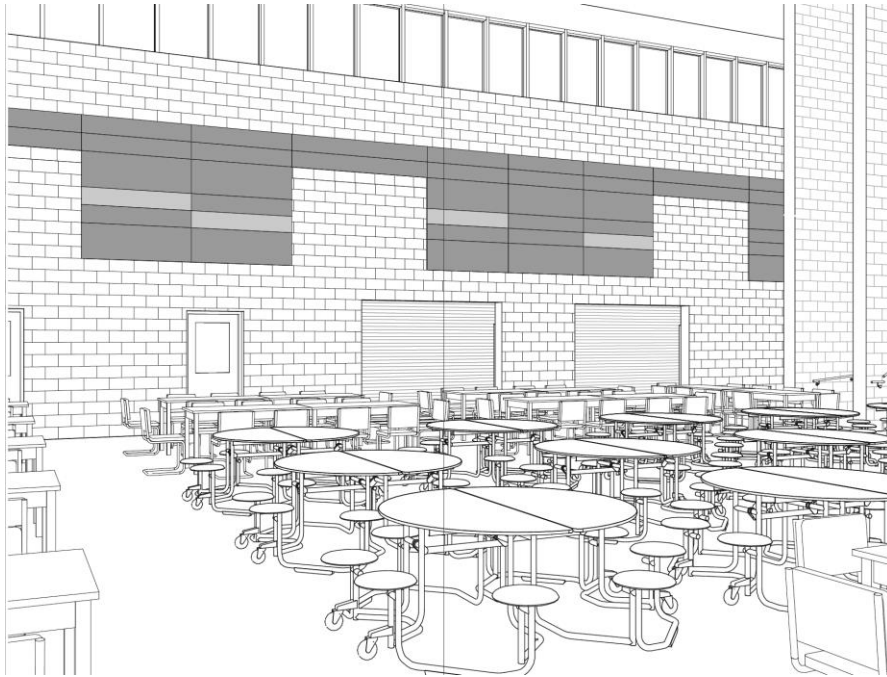
Design Review



Design Review



Design Review



Design Review



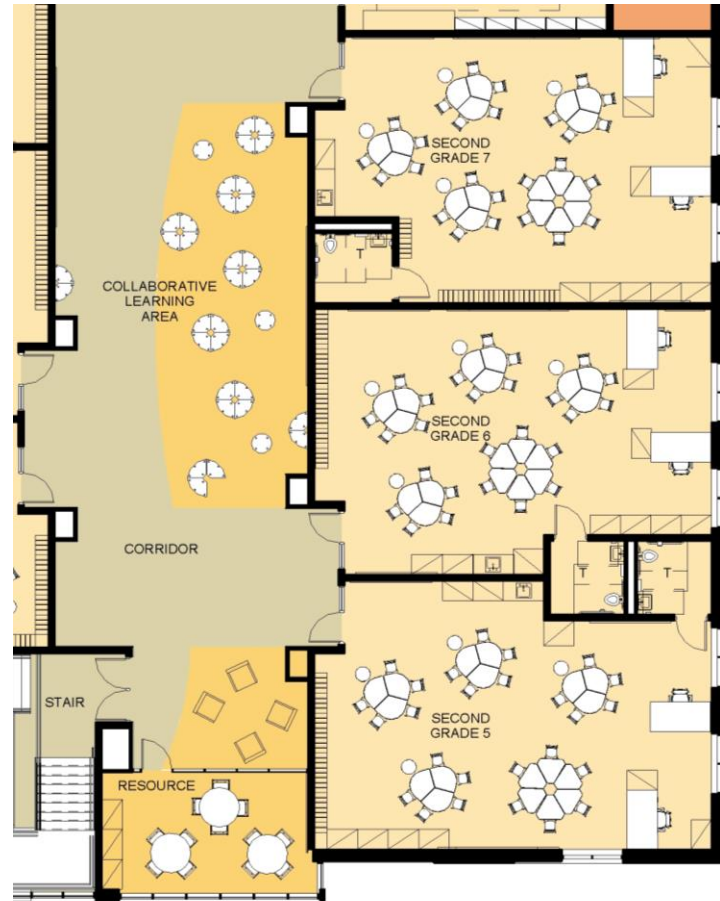
Design Review



Design Review



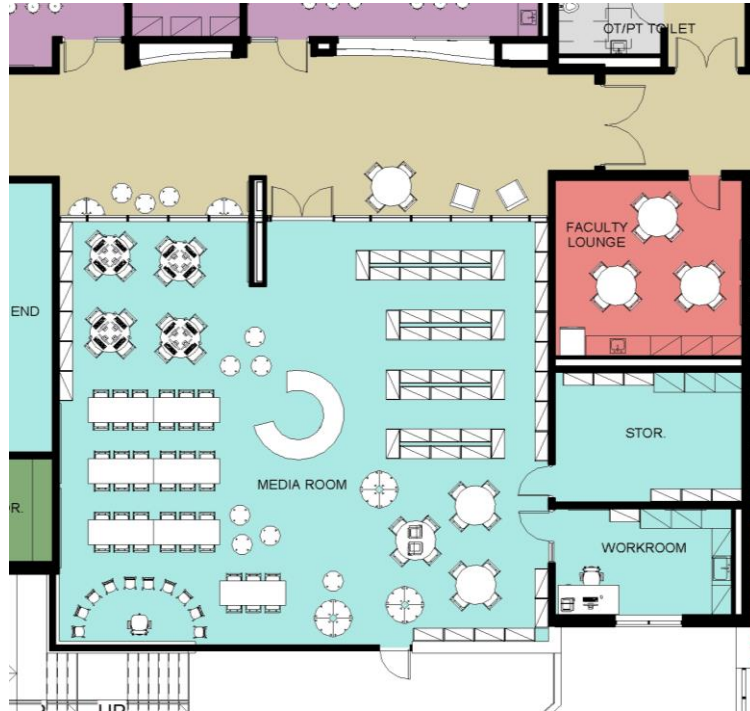
Design Review



Design Review



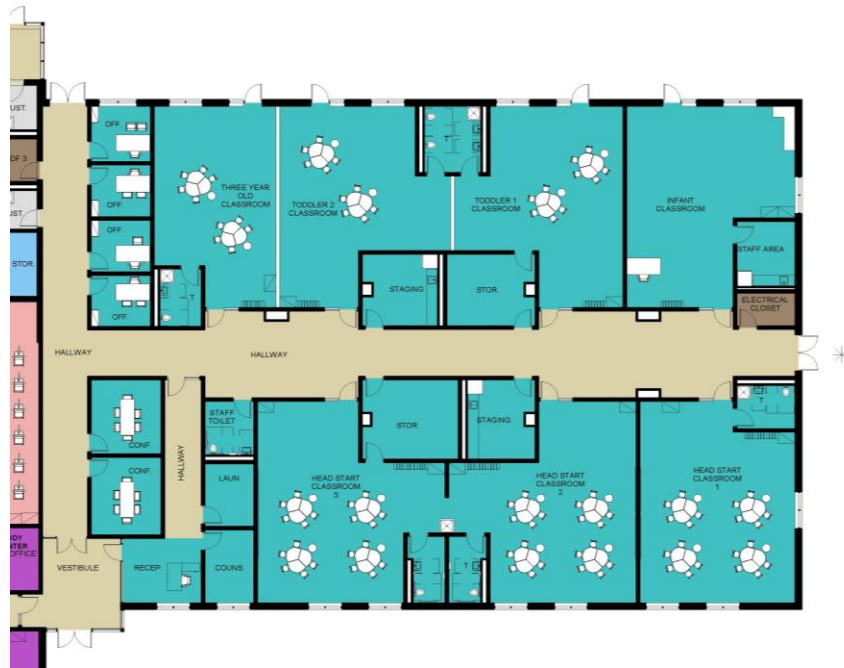
Design Review



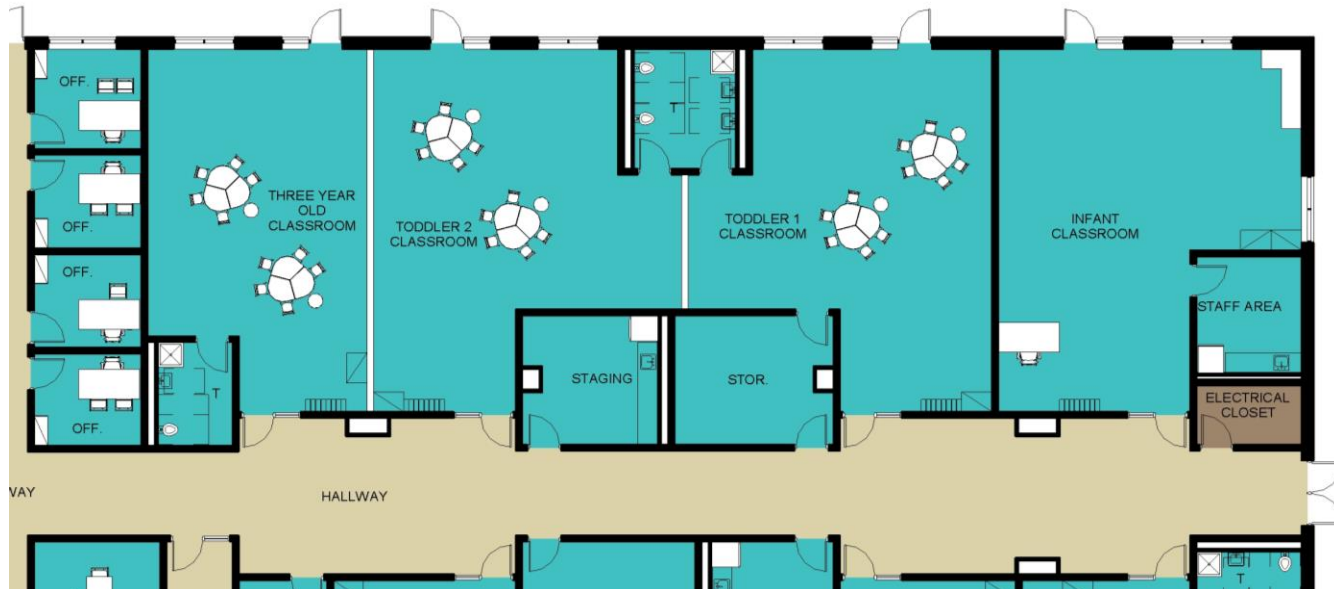
Design Review



Design Review



Design Review



Design Review



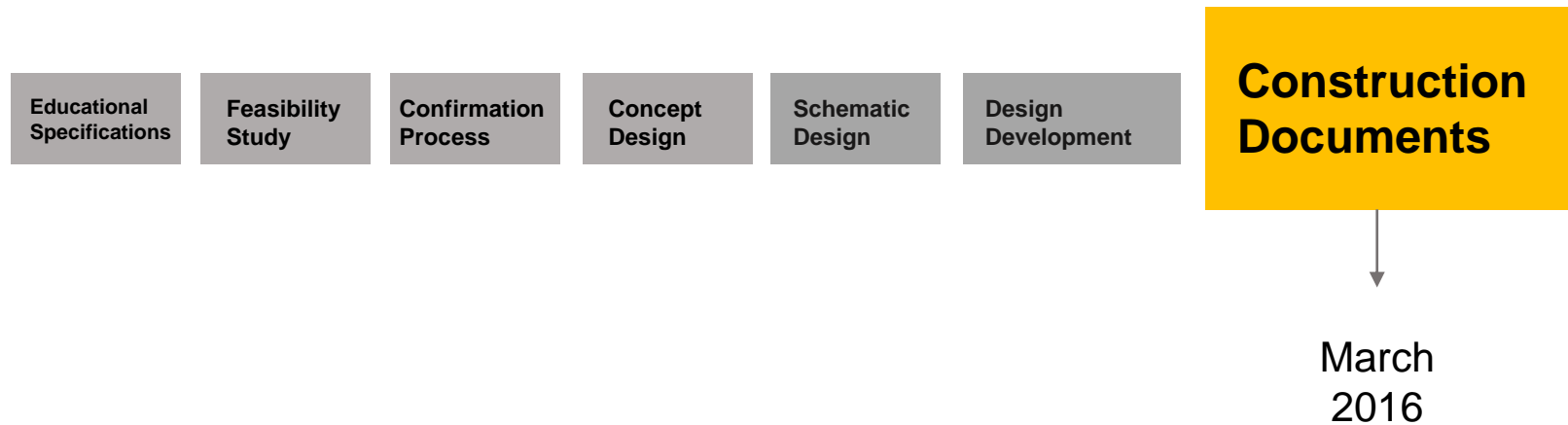
Design Review



Design Review



Next Steps



Thank You!



This presentation is brought to you by the
21st Century School Buildings Program,
Maryland Stadium Authority, City School
Partners, and GWWO inc./ Architects.

www.baltimore21stcenturyschools.org

21st Century School Buildings Program

Baltimore City Public Schools
200 East North Avenue Room 407-B
Baltimore MD 21202
(443) 642-4600

Mignon R. Anthony

Executive Director, 21st Century Buildings Program
Baltimore City Public Schools

Gary McGuigan

Senior Vice President, Capital Development Division
Maryland Stadium Authority

Dawn Kirstaetter

Deputy Mayor, Health, Human Services, Education and Youth
City of Baltimore

David Lever

Executive Director, Public School Construction Program
State of Maryland

BALTIMORE CITY
PUBLIC SCHOOLS

