



## 21<sup>st</sup> Century School Buildings Program

Patterson High School and Claremont Middle/High School  
Construction Update Community Meeting | September 17, 2020



**Introductions****Renee Stainrod**

Community & Public Relations Manager  
21<sup>st</sup> Century School Buildings Program

**Alicia Thomas**

Sr. Community & Public Relations Coordinator  
21<sup>st</sup> Century School Buildings Program

**Tiara Moorman**

Senior Project Manager  
Maryland Stadium Authority

**Elias Bezabhe**

Senior Project Manager  
Skanska USA Building

**Agenda**

- **Introductions**
- **Construction**
  - Project Schedule
  - Basic Overview
  - Phase 1, 2 and 3 Logistics
  - Recent Site Photos
  - Next Steps
- **Design**
  - Exterior View Rendering
- **Questions & Contact Information**

## Three Phases

### ***Phase 1 & 2***

**Construction of new Patterson High School & Claremont Middle/High School**

- Duration: 24 months starting at Notice to Proceed (NTP)
- July 2019 to June 2021

### ***Phase 3***

**Abatement and demolition of the existing Patterson High School and site construction**

- July 2021 to June 2022

## Hours of Operation | 6 a.m. - 7 p.m.



### **Truck Plan**

- MD 95
- Eastern Avenue
- Kane Street
- No idling or overnight deliveries

### **Rodent Plan**

- Rodent mitigation for both construction and demo phases

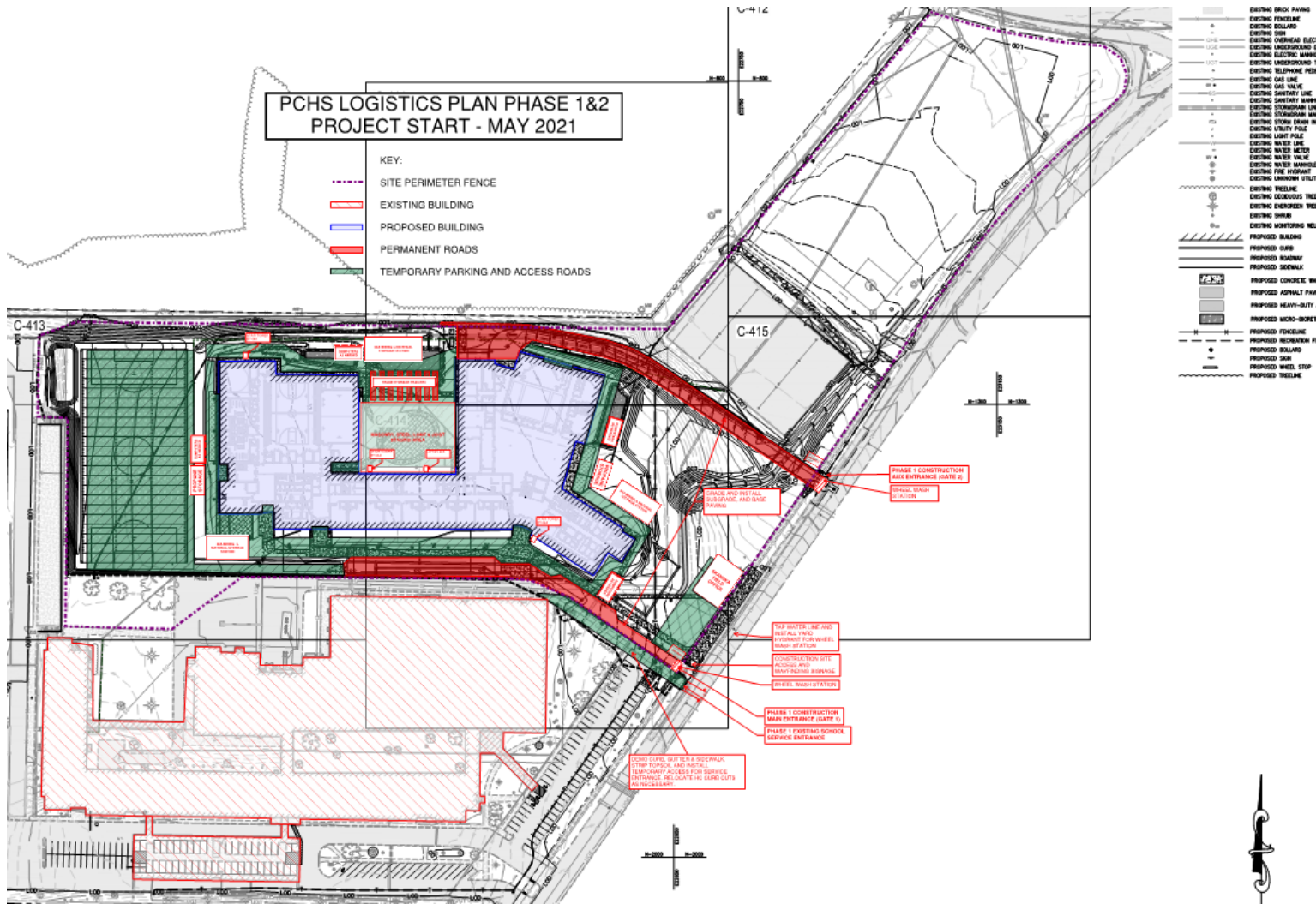
### **Logistics**

- Waste management is being handled by onsite dumpsters
- Regular street sweeping occurring to keep roads clean
- Site security is being provided by perimeter fence and cameras



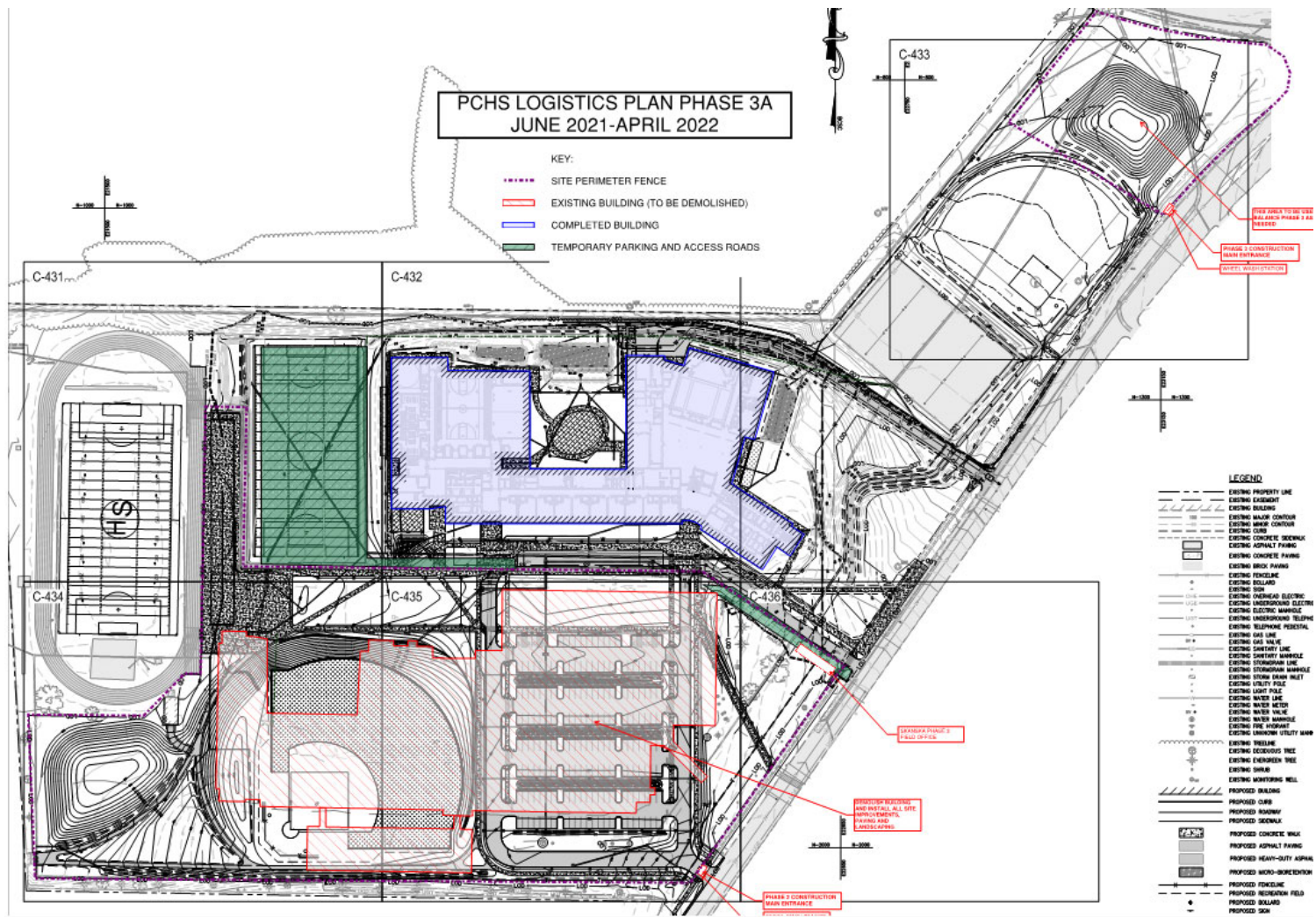
## CONSTRUCTION

## Phase 1 & 2 Logistics



## CONSTRUCTION

## Phase 3 Logistics





## CONSTRUCTION

### Area C & D Brick Installation



## CONSTRUCTION

### Area C & D Roofing







## CONSTRUCTION

### Cafeteria & Auditorium Brick & Metal Wall Panels Installation





## CONSTRUCTION

### Typical Room Interior Framing & MEP Rough-In



## CONSTRUCTION

### Typical Room Interior Framing & MEP Rough-In





1. Roofing installation ongoing
2. Installation of brick, metal wall panels, and windows
3. Interior framing ongoing
4. MEP rough-in ongoing
5. Electrical duct bank installation ongoing
6. Installation of gas line
7. Install roof equipment

## DESIGN

### Exterior View Rendering



Thank You!



This presentation is brought to you by the  
21<sup>st</sup> Century School Buildings Program.

[www.baltimore21stcenturyschools.org](http://www.baltimore21stcenturyschools.org)

**21<sup>st</sup> Century School Buildings Program**

Baltimore City Public Schools  
200 East North Avenue Room 407-B  
Baltimore MD 21202  
(443) 642-4600

**Dorothy Hellman**

Executive Director, 21<sup>st</sup> Century Buildings Program  
Baltimore City Public Schools

**Gary McGuigan**

Senior Vice President, Capital Development Division  
Maryland Stadium Authority

**Tisha Edwards**

Executive Director  
Mayor's Office of Children and Family Success

**Robert Gorrell**

Executive Director, Public School Construction Program  
State of Maryland

BALTIMORE CITY  
PUBLIC SCHOOLS



# Questions?

## CONTACTS

**Renee Stainrod**

[rastainrod@bcps.k12.md.us](mailto:rastainrod@bcps.k12.md.us)

**Alicia Thomas**

[AThomas03@bcps.k12.md.us](mailto:AThomas03@bcps.k12.md.us)

**21<sup>st</sup> Century School Buildings**

**Program Office**

**(443) 642-4600**

**[www.baltimore21stcenturyschools.org](http://www.baltimore21stcenturyschools.org)**

## Social Media



**21stCSBaltimore**



**21stCSBaltimore**



**21stCenturySchoolBuildingsProgram**