



# 21<sup>st</sup> Century School Buildings Program

Montebello Elementary / Middle School

COMMUNITY MEETING : Construction kick-Off Meeting | February 18, 2021

BALTIMORE CITY  
PUBLIC SCHOOLS



### Project Team Members

**Renee Stainrod**

Community & Public Relations Manager  
21<sup>st</sup> Century School Buildings Program

**Ivy McNeill**

Sr. Program Coordinator, Community & Public Relations  
21<sup>st</sup> Century School Buildings Program

**Michael McBride**

Design & Creative Director  
21<sup>st</sup> Century School Buildings Program

**Justin Wood**

Project Manager  
Maryland Stadium Authority

**Vince Culotta**

Construction Manager  
CAM Construction

**Todd Vukmanic**

Project Manager  
Crabtree Rohrbaugh & Associates, Architects

### Agenda

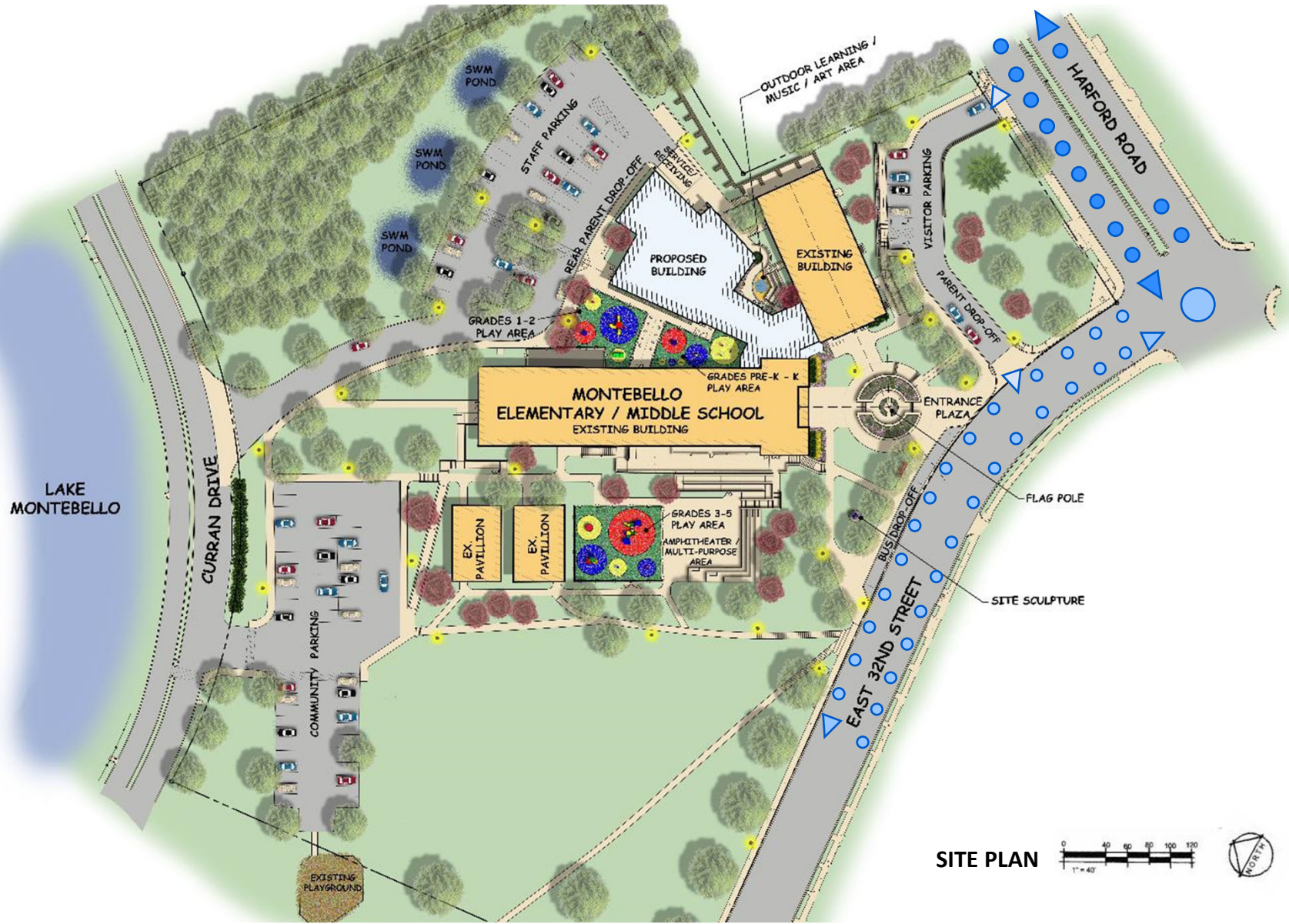
**Design Goals****Construction Documents****Site Imagery****Floor Plans & Organization****Exterior Render Images****Construction Sequencing & Traffic****Project Schedule****Questions & Contact Info**



### Comprehensive Renovations to Montebello PK-8 EMS

- ~600 Student Capacity
- Strong Connection to Community
- Dedicated Play Areas
- Promote Safety & Security
- Sustainable Design – LEED Silver
- Daylight & Views for all Learning Spaces
- Community Space Location to Improve Community Access
- 21<sup>st</sup> Century Design – Flexible Learning Spaces
- Durable, Cost-effective Materials





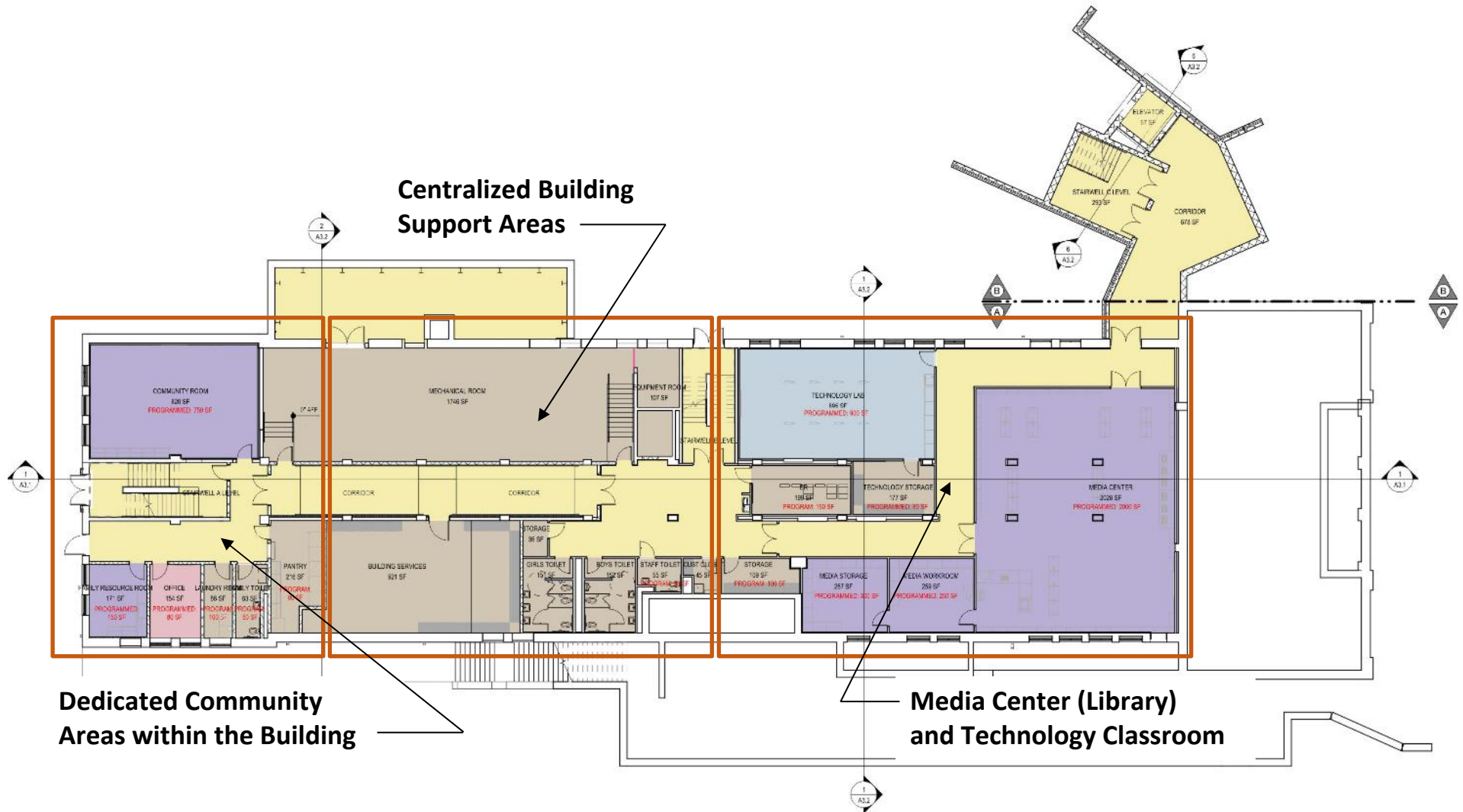


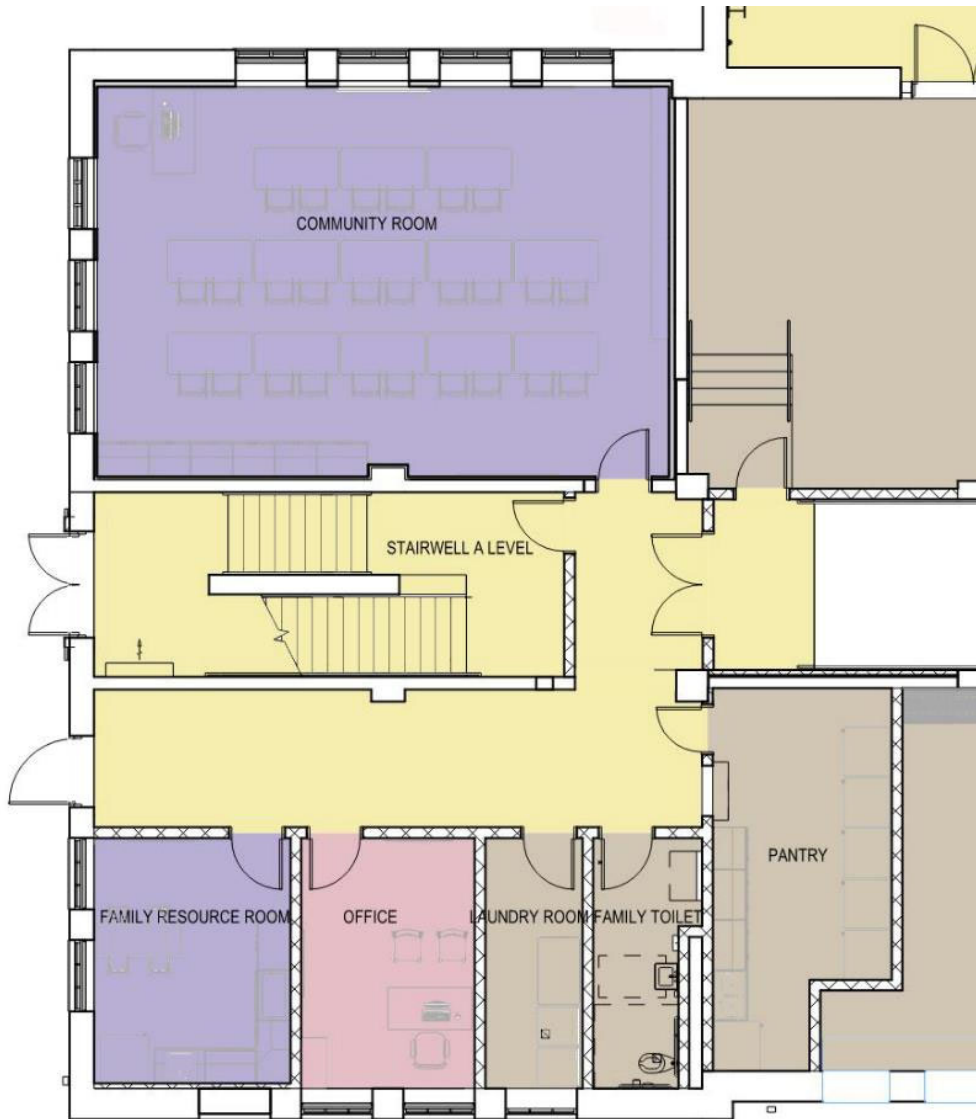






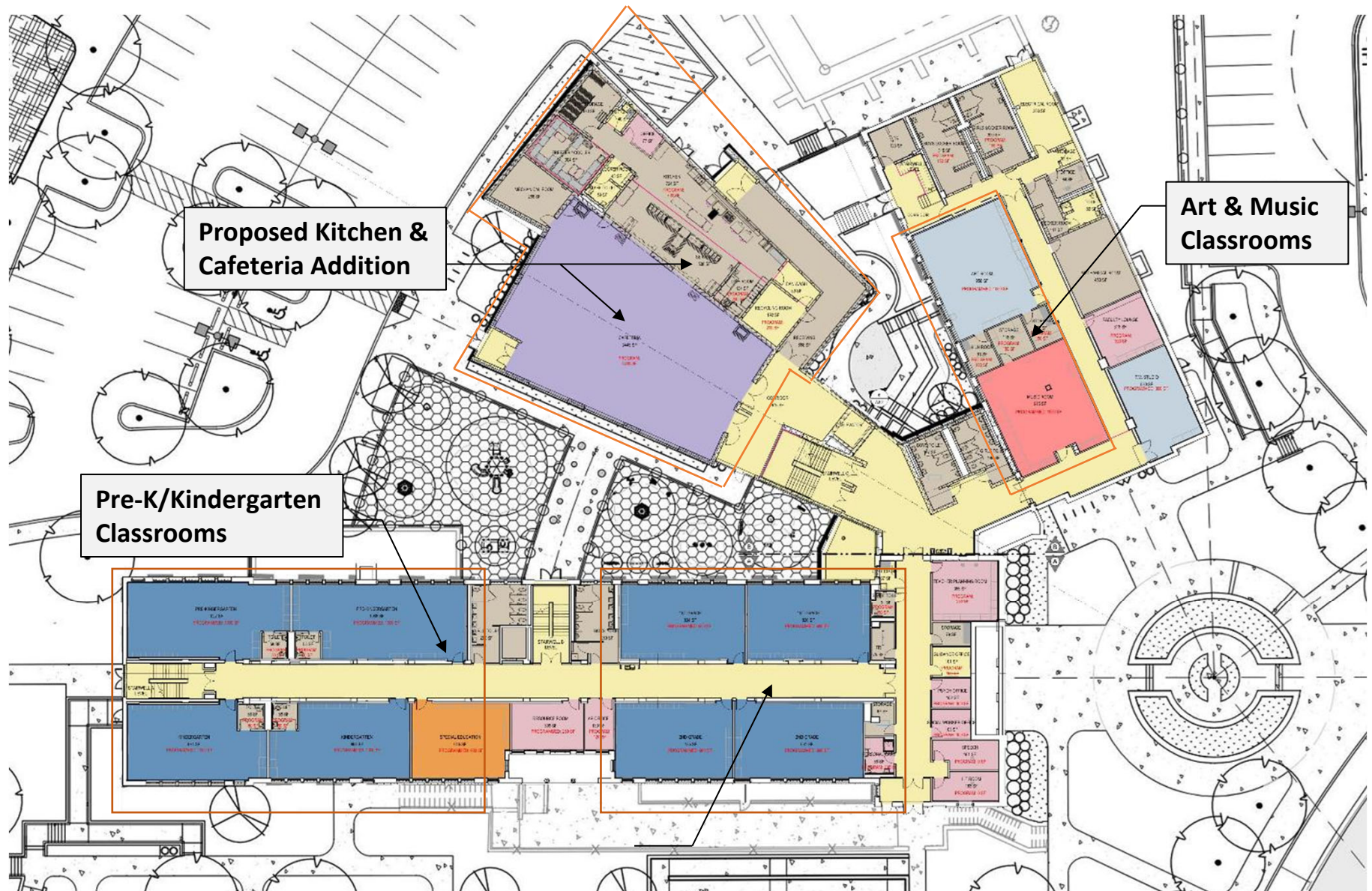




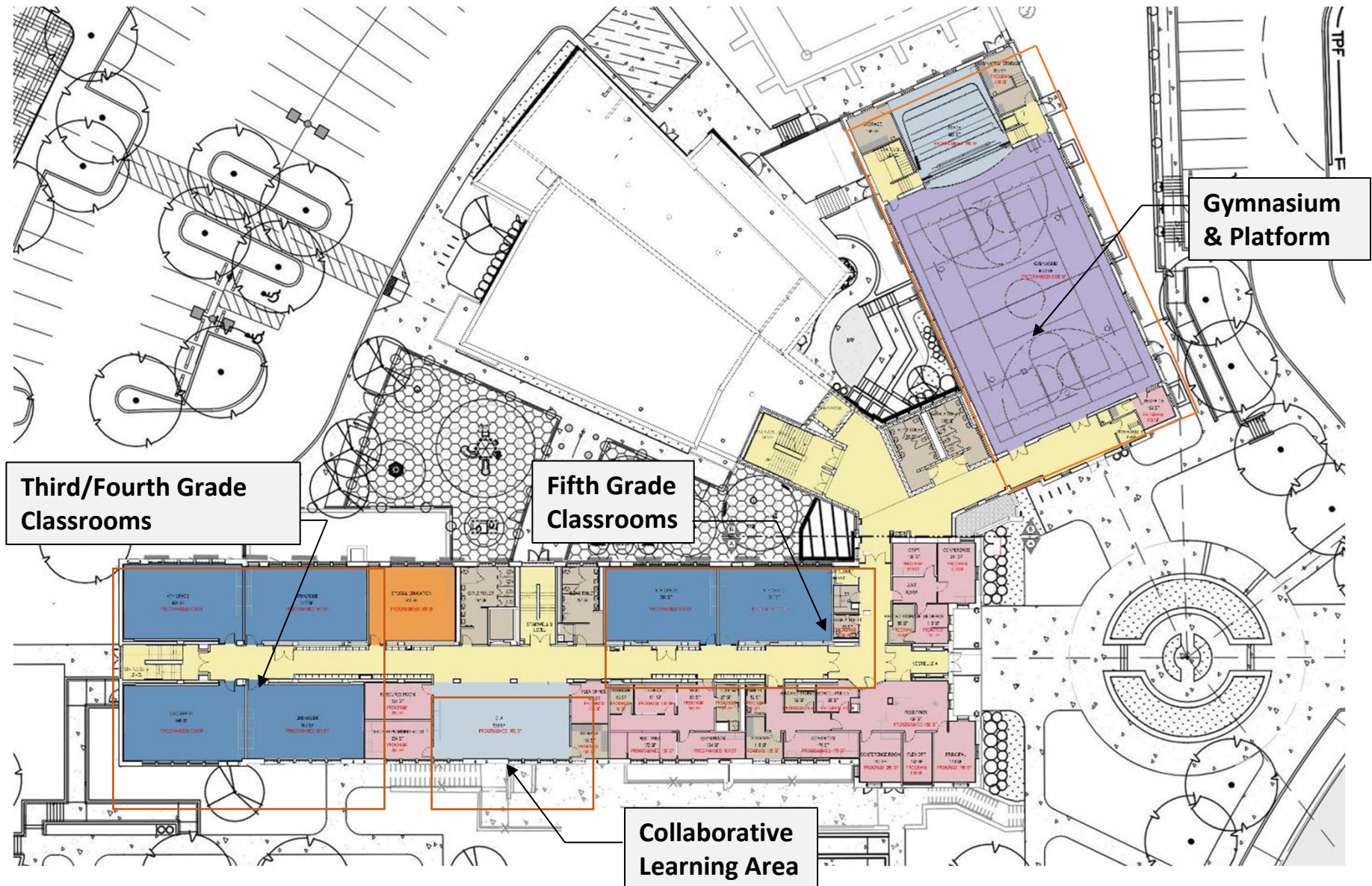
**Programmed Community Spaces**

- Large Community Room
- Family Resource Room
- Community Support Office
- Laundry
- Pantry
- Toilet

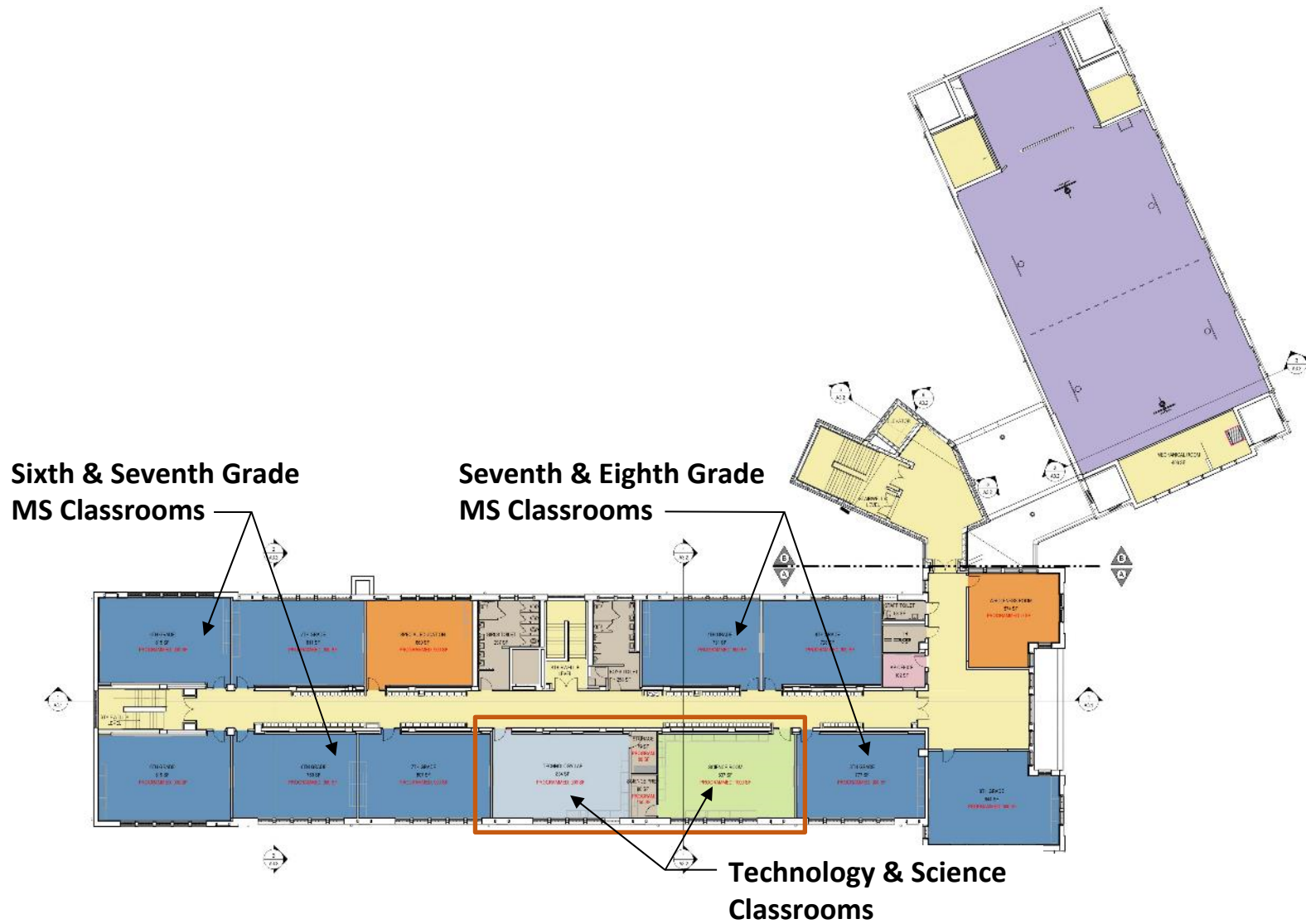




















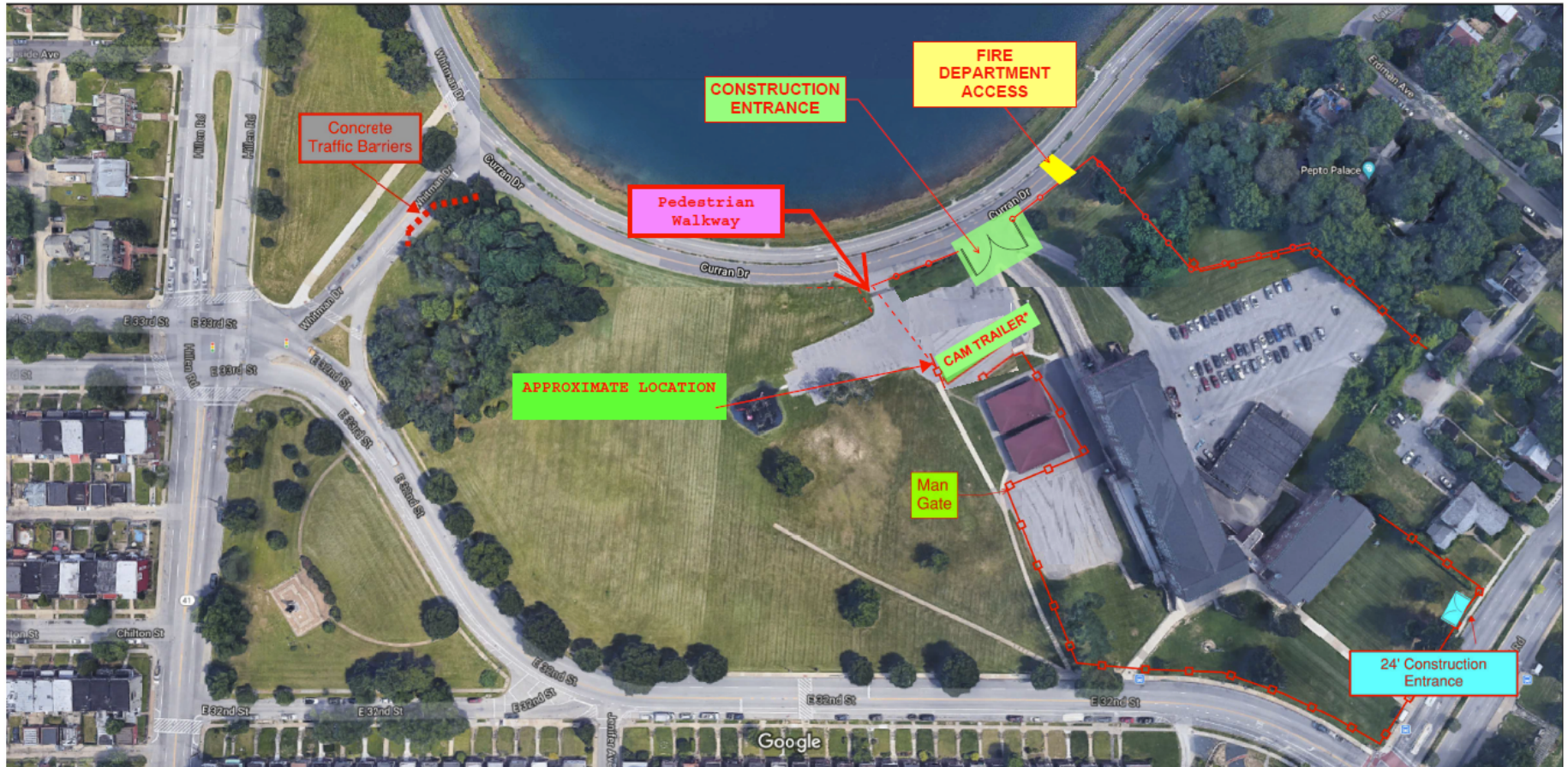


## Design

## Similar Photo – Gym with Stage







**Construction Hours:**  
Monday to Friday  
7:00 am to 4:00 pm



## Construction

## Construction Traffic Flow Diagram



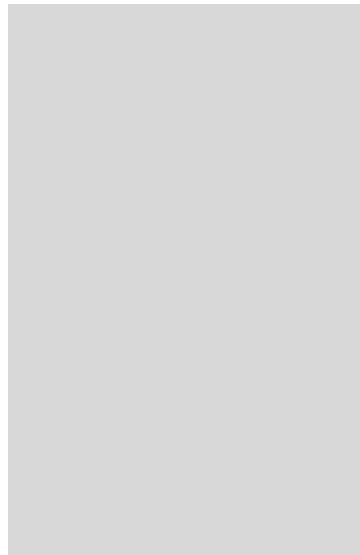


<b>CONSTRUCTION:</b>	<b>Winter 2021/Summer 2022*</b>
NTP:	Winter 2020/21*
Demolition:	February 2021– April 2021*
Construction:	April 2021 – August 2022*

*\* Dates listed are based on a projected schedule and are subject to change.*

## Construction

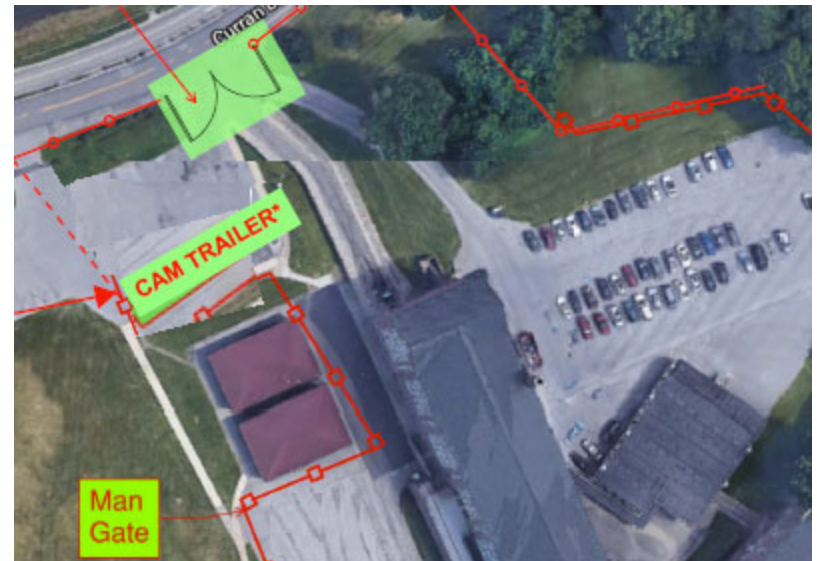
## Early Site Mobilization – Similar Photos





## Construction

## CAM Trailer



### Security Tactics

- 24 Hour Surveillance (TrueLook & Mobile Video Guard)
- Site Perimeter Fencing
- Security Guard



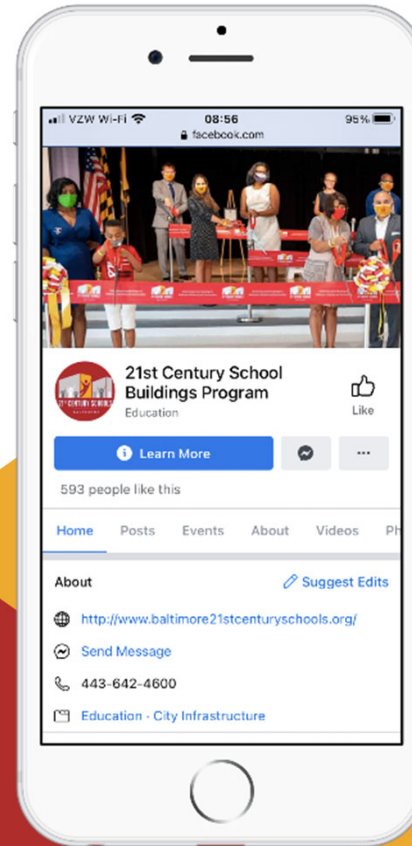
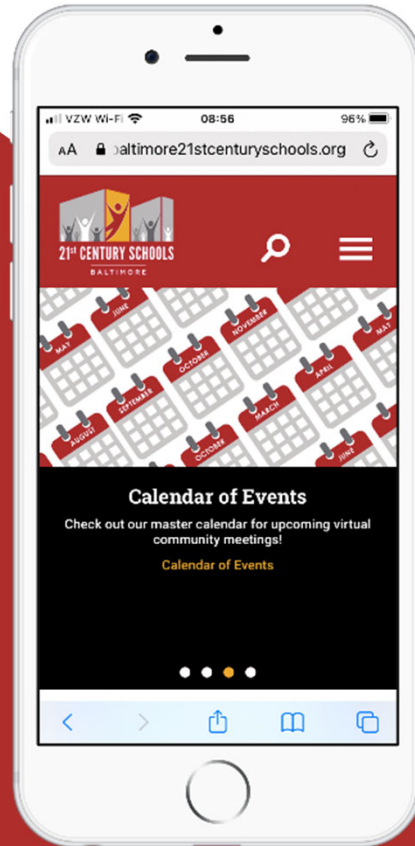


# WORKFORCE DEVELOPMENT



**CALL (410) 396-3009**

[www.baltimore21stcenturyschools.org](http://www.baltimore21stcenturyschools.org) @21stCenturySchoolBuildingProgram





# Questions?

## CONTACTS

**Renee Stainrod**  
[rastainrod@bcps.k12.md.us](mailto:rastainrod@bcps.k12.md.us)

**Ivy McNeil**  
[IDMcNeill01@bcps.k12.md.us](mailto:IDMcNeill01@bcps.k12.md.us)

**21<sup>st</sup> Century School Buildings  
Program Office**  
(443) 642-4600

**[www.baltimore21stcenturyschools.org](http://www.baltimore21stcenturyschools.org)**

## Social Media



**21stCSBaltimore**



**21stCSBaltimore**



**21stCenturySchoolBuildingsProgram**

Thank You!



This presentation was brought to you by  
the 21<sup>st</sup> Century School Buildings Program.

[www.baltimore21stcenturyschools.org](http://www.baltimore21stcenturyschools.org)

**21<sup>st</sup> Century School Buildings Program**

Baltimore City Public Schools  
200 East North Avenue Room 407-B  
Baltimore, MD 21202  
(443) 642-4600

**Dorothy Hellman**

Executive Director, 21<sup>st</sup> Century Buildings Program  
Baltimore City Public Schools

**Gary McGuigan**

Executive Vice President, Capital Development Division  
Maryland Stadium Authority

**Tisha Edwards**

Executive Director  
Mayor's Office of Children and Family Success

**Robert Gorrell**

Executive Director, Public School Construction Program  
State of Maryland

BALTIMORE CITY  
PUBLIC SCHOOLS



MARYLAND

