



## 21<sup>st</sup> Century School Buildings Program

Montebello Elementary / Middle School

COMMUNITY MEETING Design Meeting | September 23, 2020

BALTIMORE CITY  
PUBLIC SCHOOLS



### Presenters

**Renee Stainrod**

Community & Public Relations Manager  
21<sup>st</sup> Century School Buildings Program

**Ivy McNeill**

Sr. Program Coordinator, Community & Public Relations  
21<sup>st</sup> Century School Buildings Program

**Michael McBride**

Design & Creative Director  
21<sup>st</sup> Century School Buildings Program

**Justin Wood**

Project Manager  
Maryland Stadium Authority

**John Speights**

Construction Manager  
CAM Construction

**Todd Vukmanic**

Project Manager  
Crabtree Rohrbaugh & Associates, Architects

### Agenda

**Design Goals****Construction Documents****Site Imagery****Floor Plans & Organization****Building Elevations****Exterior Render Images****Construction Sequencing & Traffic****Project Schedule****Questions & Contact Info**



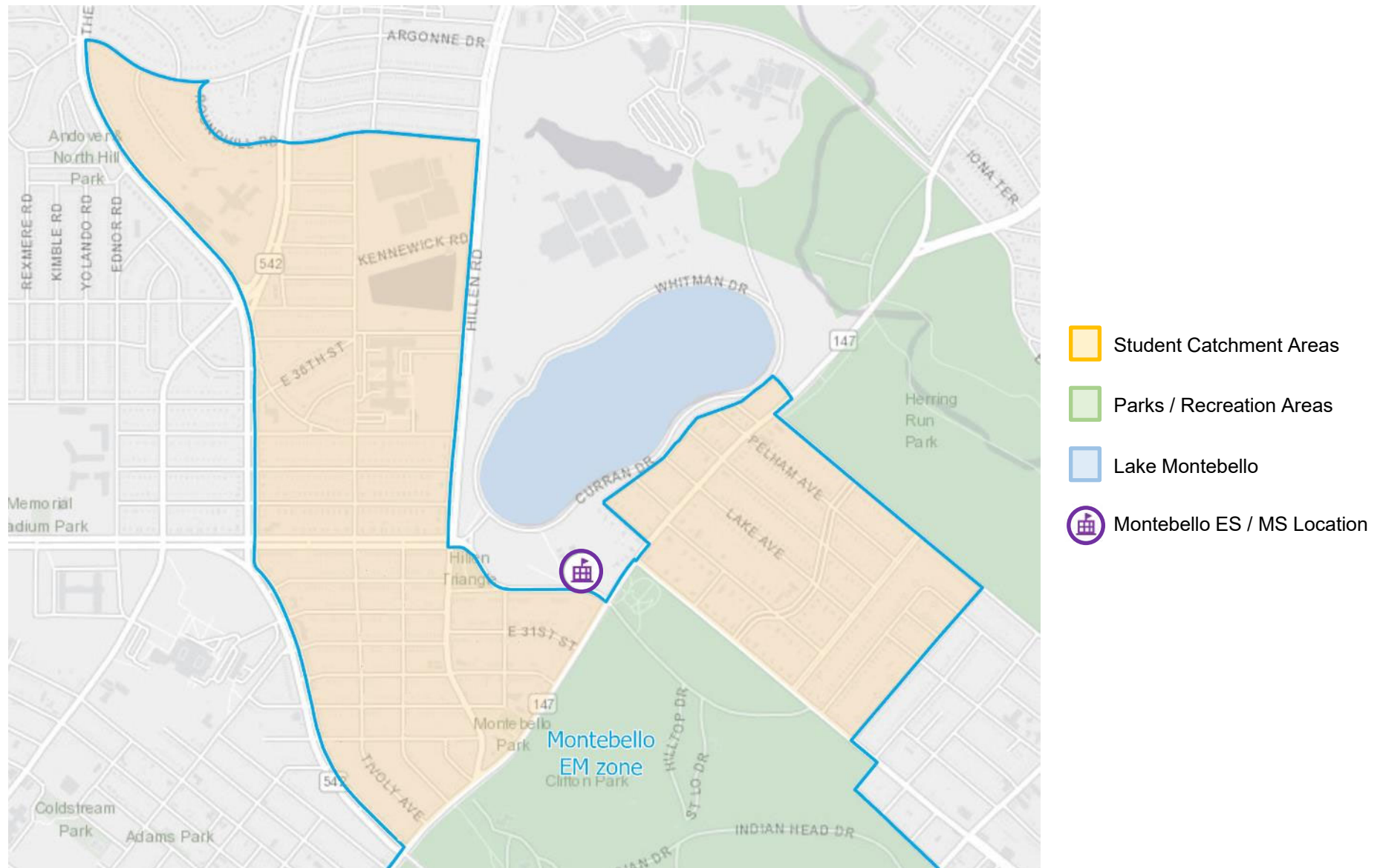


### **Comprehensive Renovations to Montebello PK-8 Elementary/Middle School**

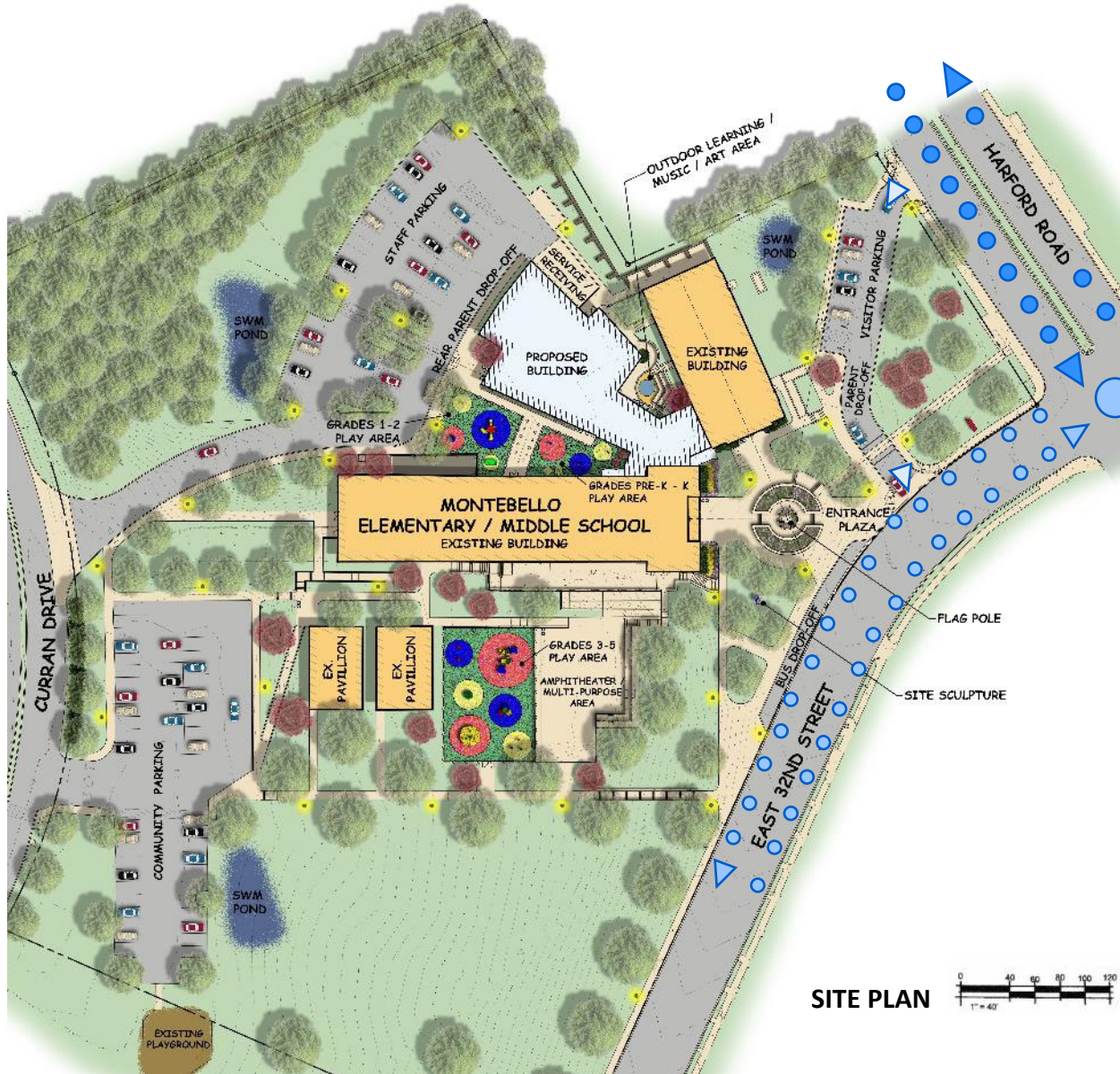
- ~600 Student Capacity
- Strong Connection to Community
- Dedicated Play Areas
- Promote Safety & Security
- Sustainable Design – LEED Silver
- Daylight & Views for all Learning Spaces
- Community Space Location to Improve Community Access
- 21<sup>st</sup> Century Design – Flexible Learning Spaces
- Durable, Cost-effective Materials

## Design

## Montebello Design Goals – Student Catchment Area







### Retention of Existing Site Features

- Community Access/Parking
- Improvements to Existing Features

### Safety & Security

- Defined Main Entrance
- Secured K-Play Area
- Dedicated Staff, Visitor and Community Parking

### Site Challenges

- Topography and Security

### Stormwater Management

- Micro Bio-Retention Facilities

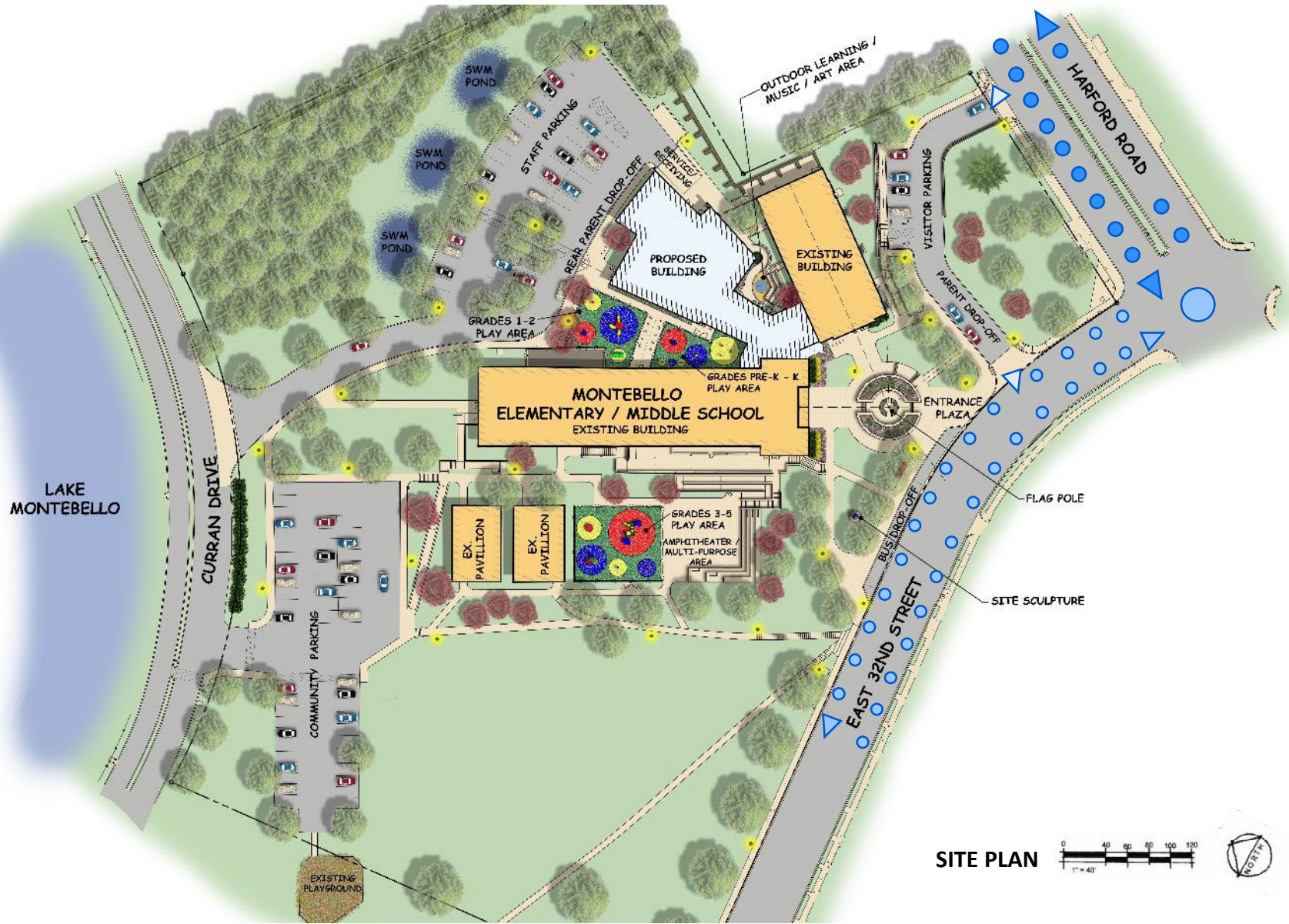
### Pedestrian Circulation & Community Connectivity

- Intuitive Pathways and Wayfinding
- Enhanced Community Support and Opportunities

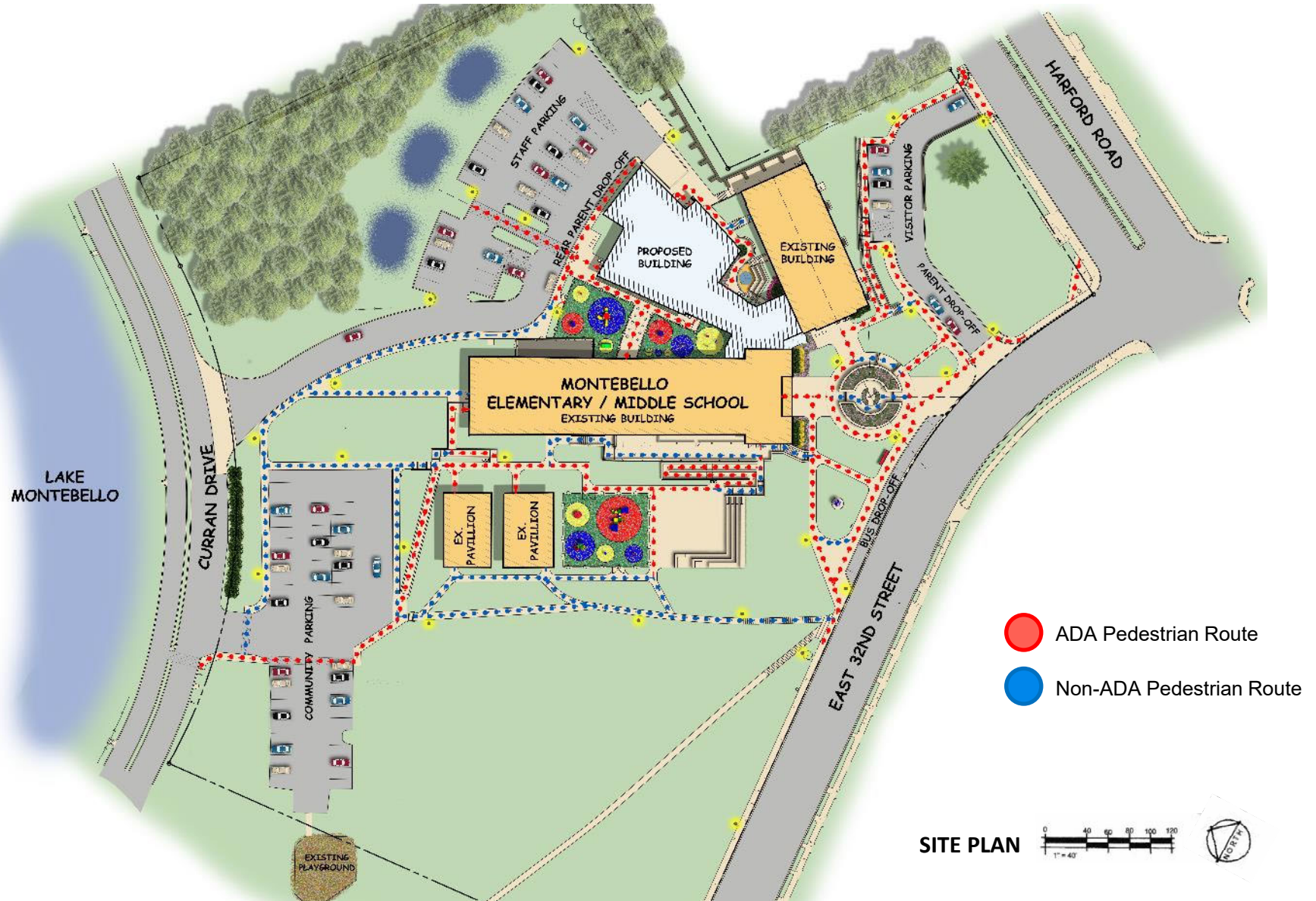
### New Addition

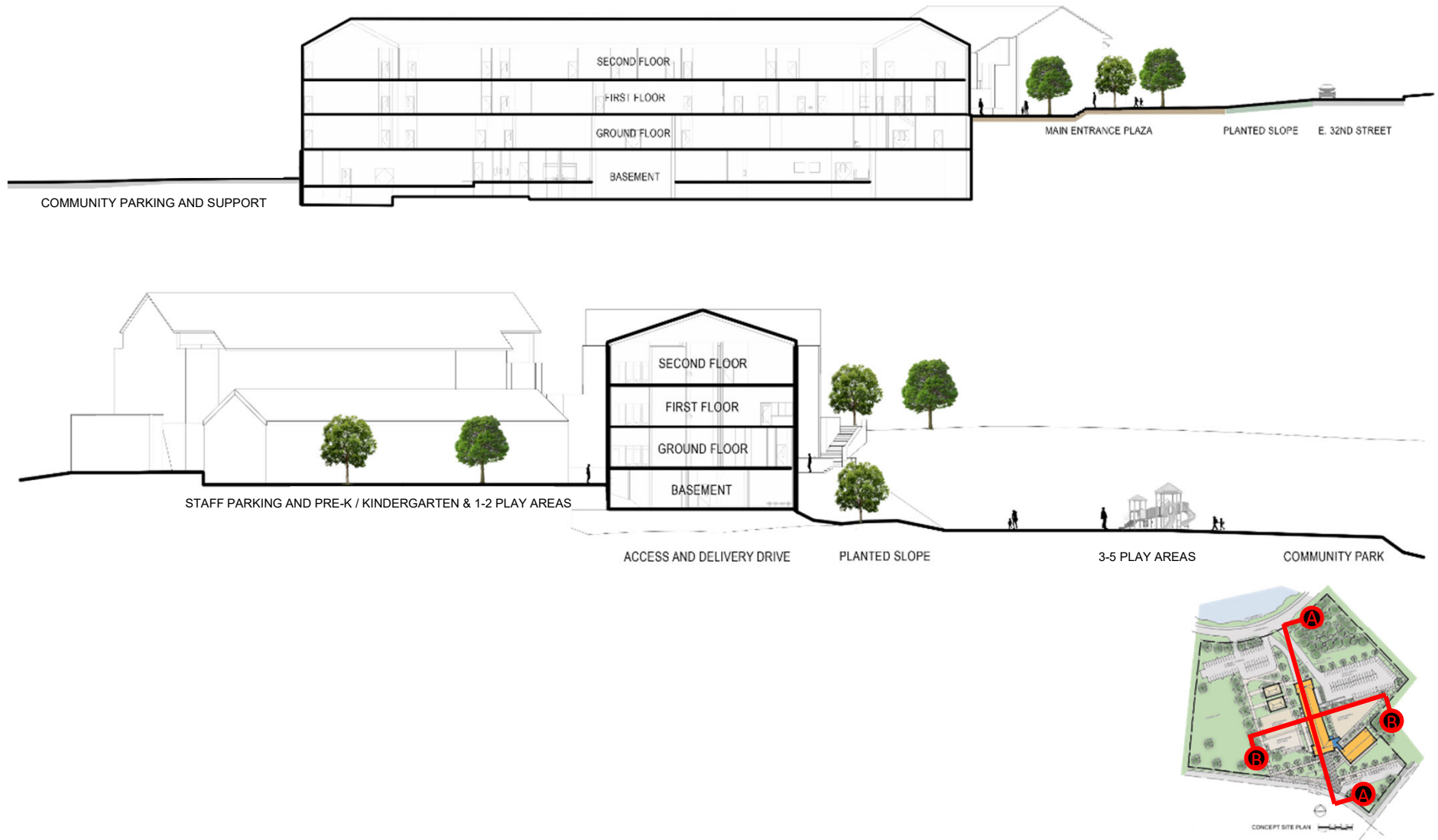
- Cafeteria and Kitchen
- Kitchen Support Spaces
- Receiving and Support for Kitchen

















## Design

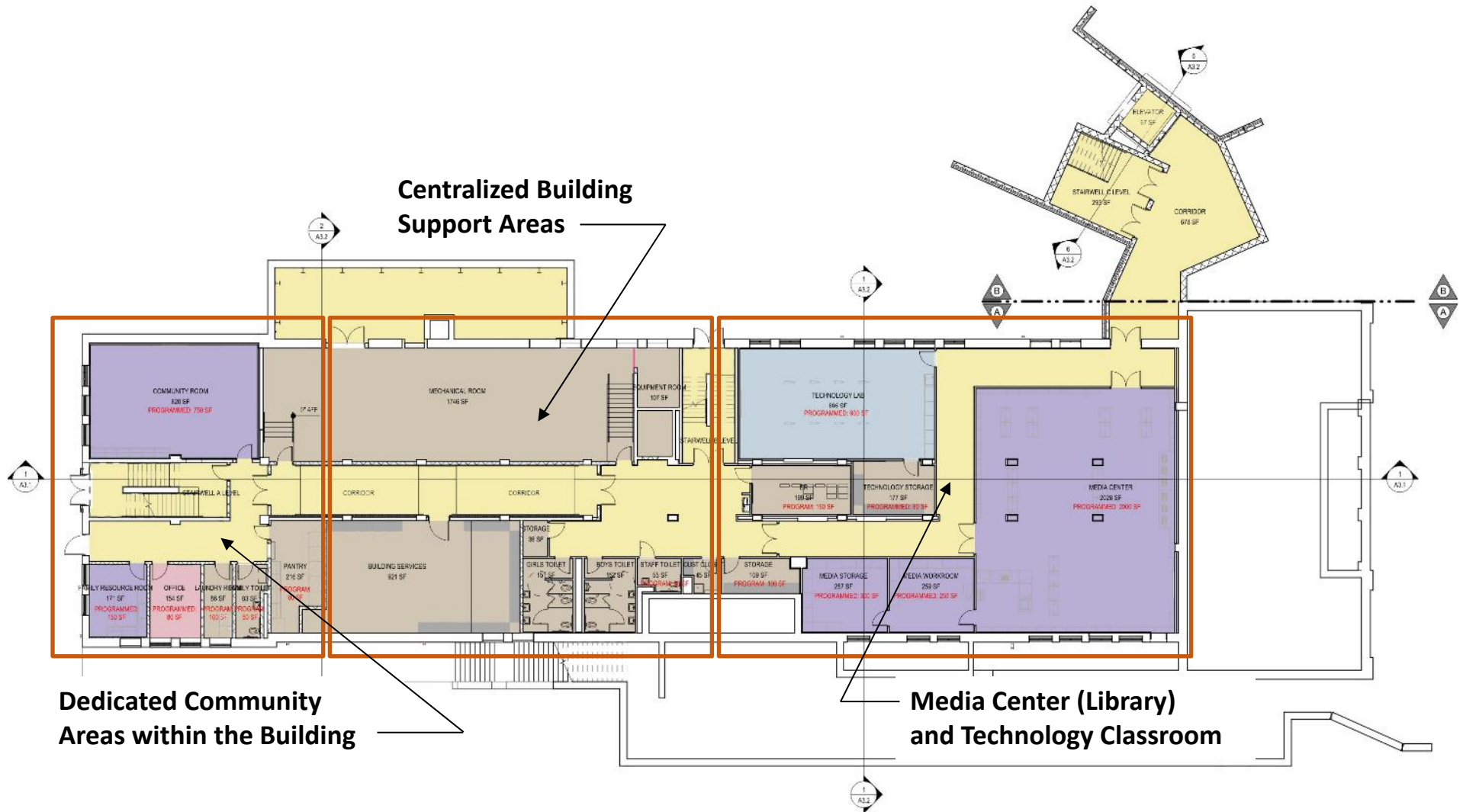
## Site Imagery

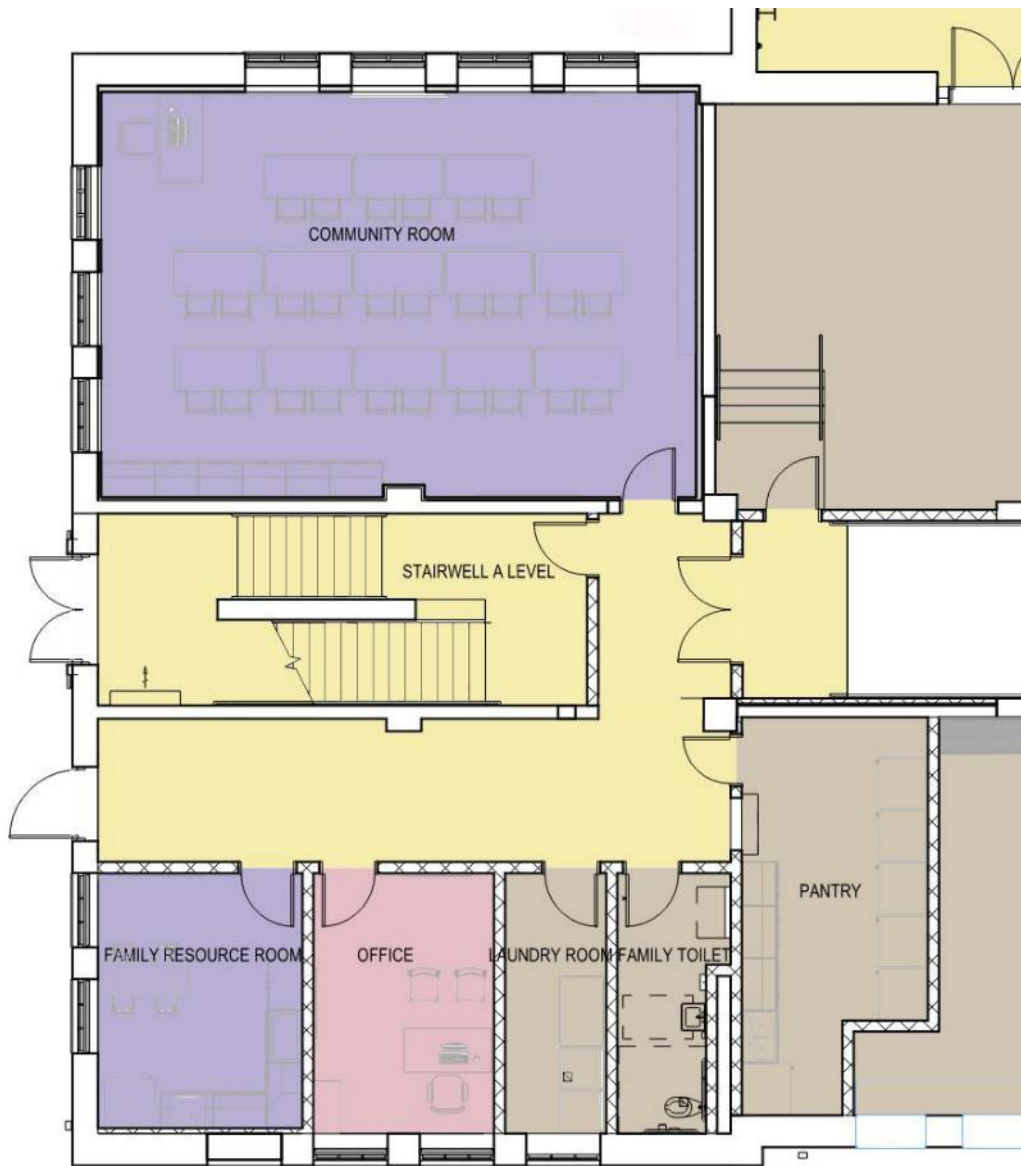




## Design

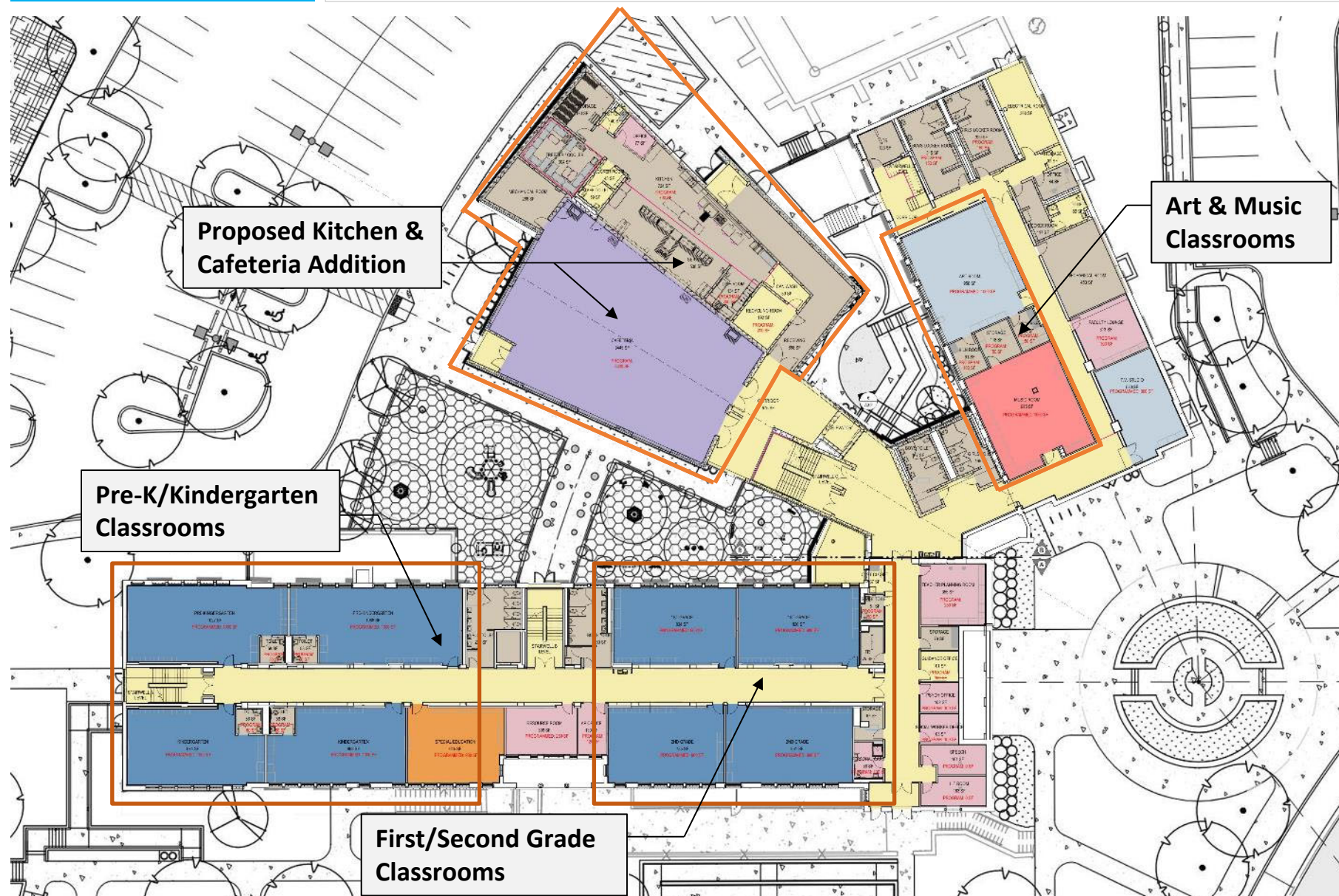
## Construction Documents - Basement Floor Plan



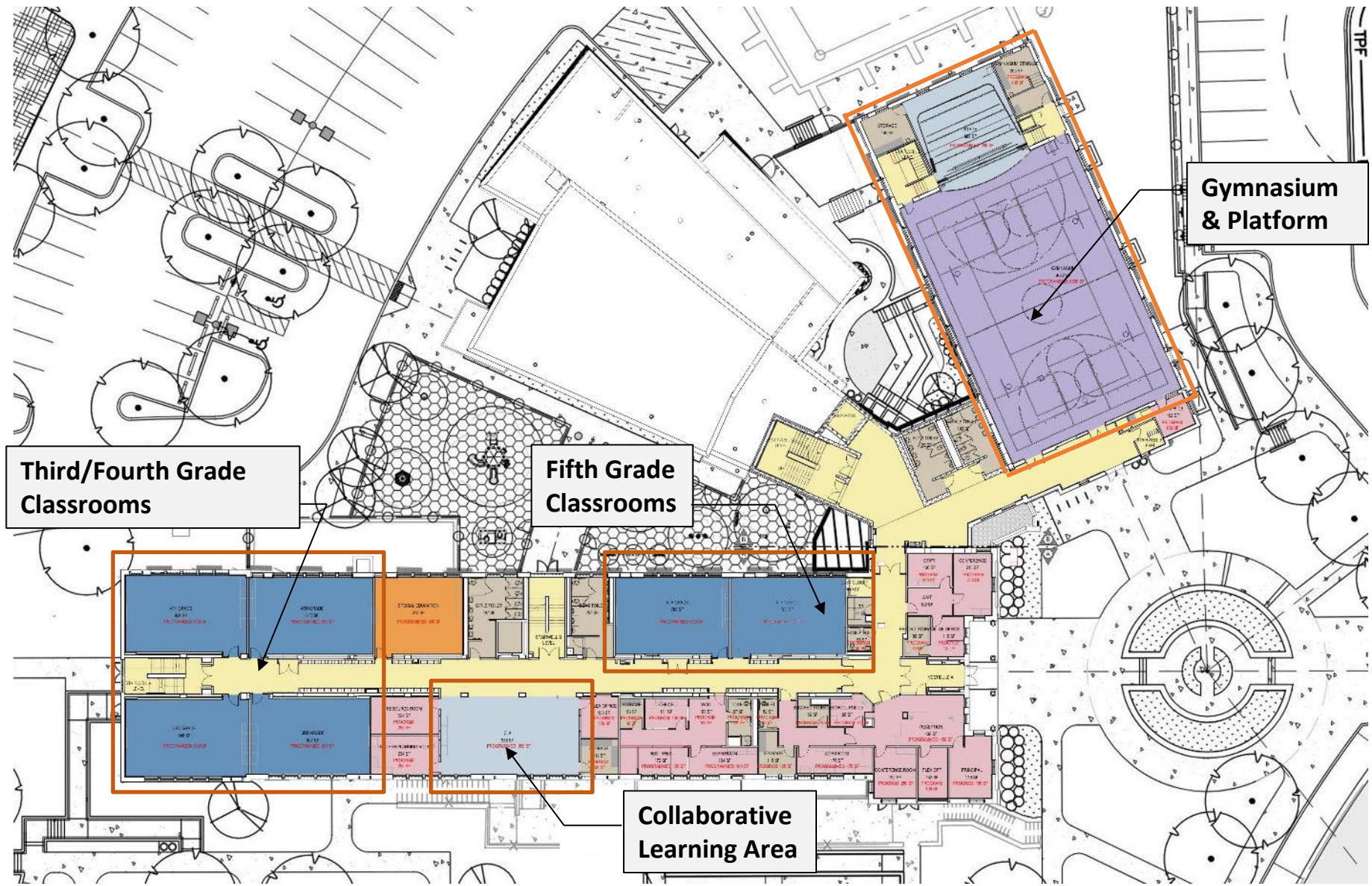
**Programmed Community Spaces**

- Large Community Room
- Family Resource Room
- Community Support Office
- Laundry
- Pantry
- Toilet

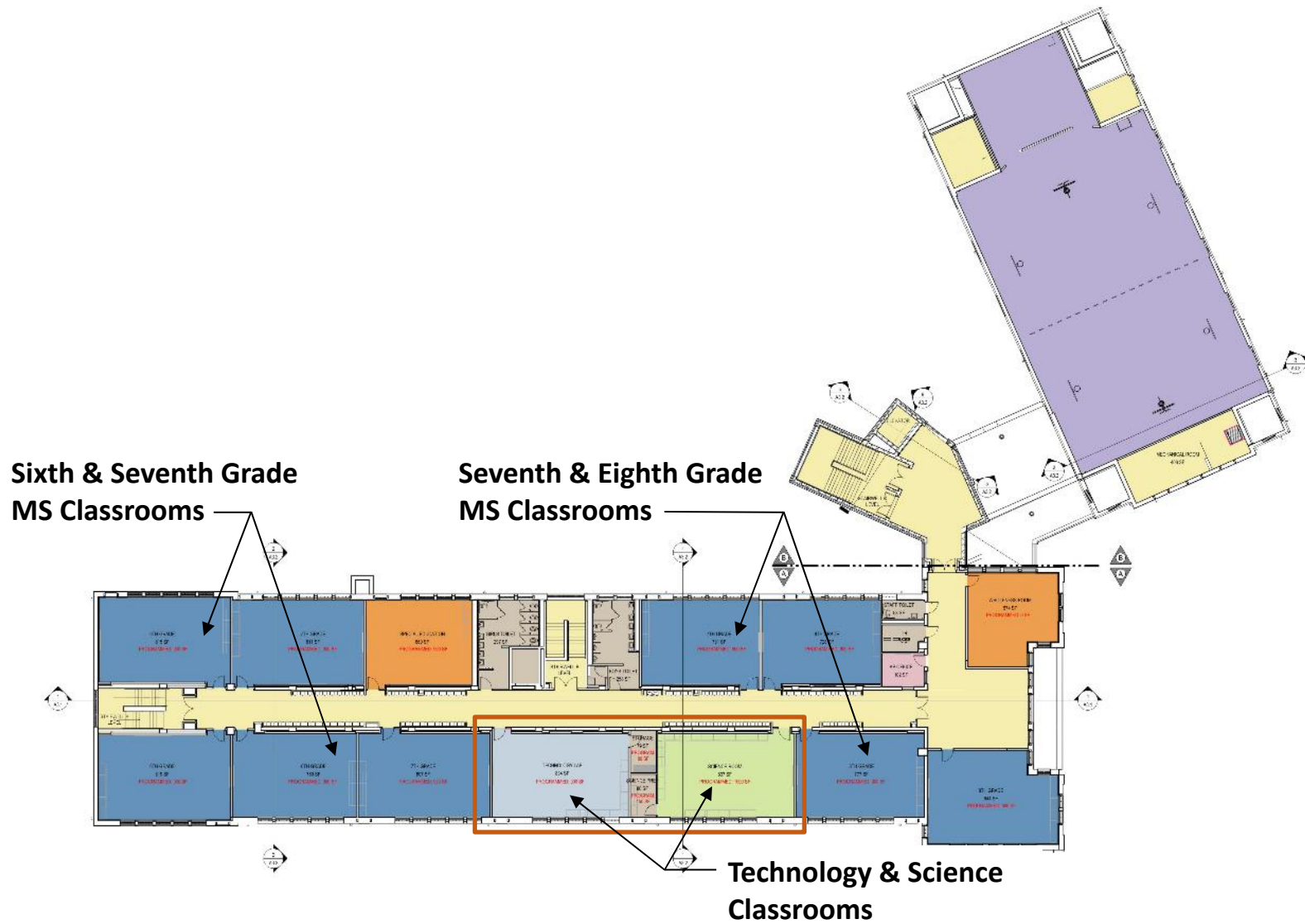












Separate Public & Community Spaces from Academic Wing

Pre-K and K Classrooms Located on the Ground Floor with Direct Access to their Dedicated Play Area

Improved Vertical/Horizontal Building Circulation

Grade Groupings are Separated by Floor Levels

Middle School Grade Level Located on the Second Floor

Cluster Pre-K, Kindergarten, First and Second Grade Classrooms Together

Create Separate Play Areas Dedicated by Grade Groupings

Provide Centrally Located Collaborative Learning Space within the Classroom Areas

Provide Daylighting into all Learning Spaces

Security is Enhanced with the Ability to Secure the Academic Wings During Community Use











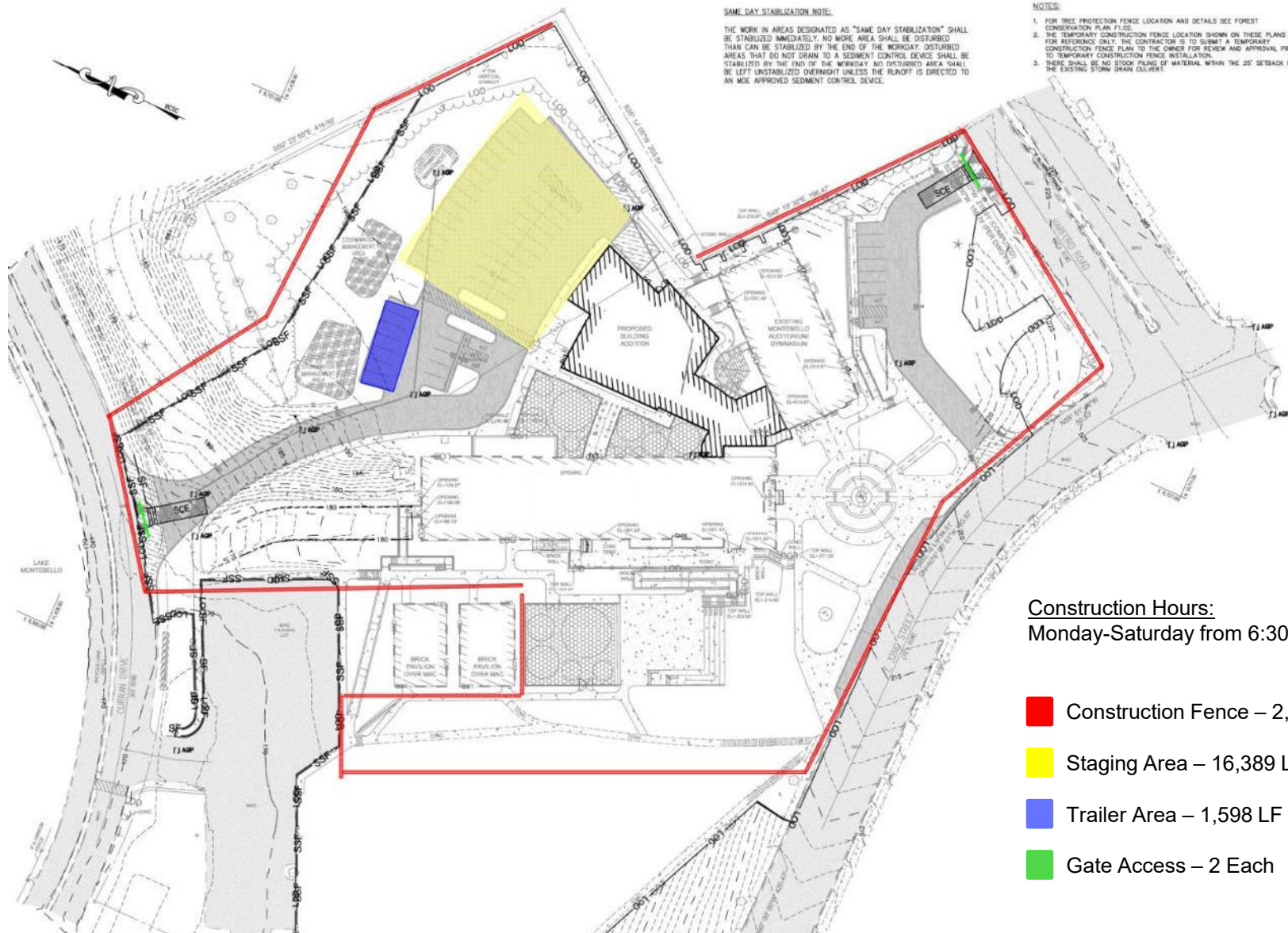






# Construction

## Construction Sequencing



## Construction

## Construction Traffic Flow Diagram





## Construction

## Construction Images



<b>Schematic Design:</b>	<b>Winter 2019/Spring 2020*</b>
Design Development:	Spring 2020*
Construction Documents:	Summer 2020*
Move Out Date	Fall 2020*
Bidding:	Winter 2020*
Begin Construction:	Winter 2021*
Substantial Completion:	Summer 2022*
Move In Date	August 2022*

*\* Dates listed are based on a projected schedule and are subject to change, given the current climate of social distancing.*



Thank You!



This presentation was brought to you by  
the 21<sup>st</sup> Century School Buildings Program.

[www.baltimore21stcenturyschools.org](http://www.baltimore21stcenturyschools.org)

**21<sup>st</sup> Century School Buildings Program**

Baltimore City Public Schools  
200 East North Avenue Room 407-B  
Baltimore, MD 21202  
(443) 642-4600

**Dorothy Hellman**

Executive Director, 21<sup>st</sup> Century Buildings Program  
Baltimore City Public Schools

**Gary McGuigan**

Executive Vice President, Capital Development Division  
Maryland Stadium Authority

**Tisha Edwards**

Executive Director  
Mayor's Office of Children and Family Success

**Robert Gorrell**

Executive Director, Public School Construction Program  
State of Maryland

BALTIMORE CITY  
PUBLIC SCHOOLS



# Questions?

## CONTACTS

**Renee Stainrod**

[rastainrod@bcps.k12.md.us](mailto:rastainrod@bcps.k12.md.us)

**Ivy McNeil**

[IDMcNeill01@bcps.k12.md.us](mailto:IDMcNeill01@bcps.k12.md.us)

**21<sup>st</sup> Century School Buildings**

**Program Office**

**(443) 642-4600**

**[www.baltimore21stcenturyschools.org](http://www.baltimore21stcenturyschools.org)**

## Social Media



**21stCSBaltimore**



**21stCSBaltimore**



**21stCenturySchoolBuildingsProgram**