

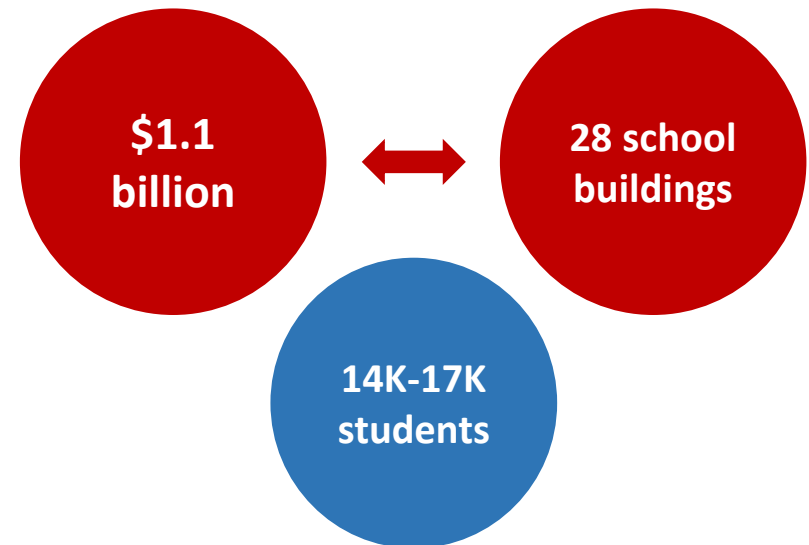


21st Century School Buildings Program
Montebello Elementary/Middle School Concept Design Meeting
February 26, 2020

Presenters	Agenda
Renee Stainrod Public Relations/Engagement Manager 21 st Century School Buildings Program	<ul style="list-style-type: none">• Introductions• Overview & Vision• Planning• Design• Project Scope• Existing Site Analysis• Schematic Site Plan• Schematic Floor Plans• Building Massing Model• Project Timeline
Ivy McNeill Engagement Program Coordinator 21 st Century School Buildings Program	
Justin Wood Project Manager 21 st Century School Buildings Program Maryland Stadium Authority	
Rick LeBlanc Architect Crabtree Rohrbaugh & Associates	

The Baltimore City Public School System (City Schools) Construction and Revitalization Act of 2013 resulted in a partnership between:

- City Schools
- Maryland Stadium Authority
- City of Baltimore
- IAC (Interagency Commission on Public School Construction)





Through the ambitious 21st Century School Buildings Program students in Baltimore City Public Schools will benefit from:

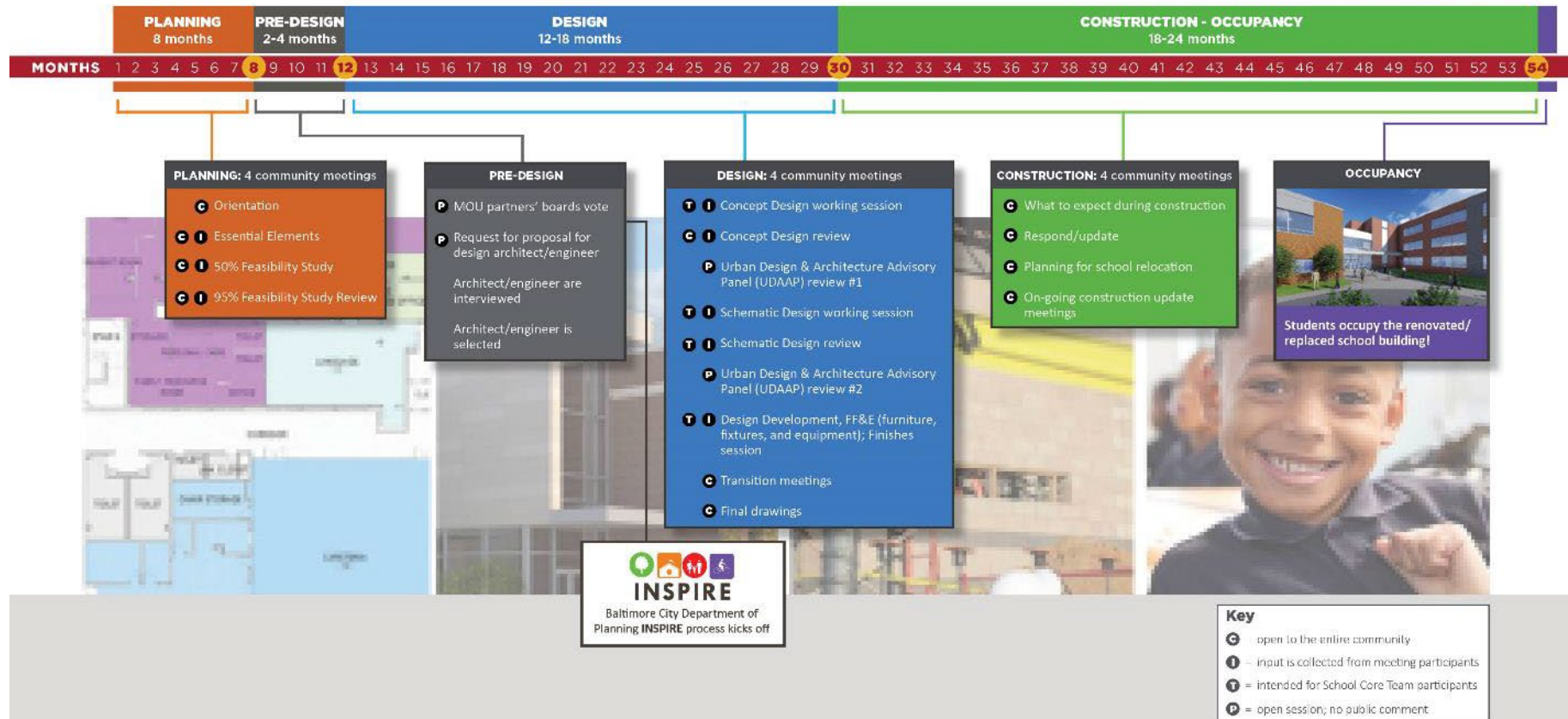
- New or renovated school buildings across the city
- School environments that support teaching and learning to prepare students for college and career success
- Schools that become hubs of resources supporting entire communities
- Modern, efficient and inspiring educational facilities that also provide recreation and community use
- Partnerships that encourage businesses and neighborhood residents to connect with their local schools.



21st Century School Buildings Engagement Process

The essential role of school stakeholders in the 21st Century School Buildings process.

Each school is unique. Creating modern, high-quality learning environments that meet the needs of individual school communities and support their vision for student success is a collaborative effort. The process for the design of each school building takes 18-24 months. The process for the construction of a school takes an additional 18-24 months marked by multiple opportunities for school communities to provide input and feedback.



Updated 1/13/2020

A Feasibility Study is an analysis of the existing condition of the site and building components to include systems, elevations, other planning and design considerations.

The study produced two possible solutions (renovation and replacement options) that address:

- **Educational Specifications:** determine building deficiencies or ability to accomplish goals of the project
- **Budgets:** including Forty-Year Life Cycle and schedule for all options
- **Option #2,** a Renovation/Addition, was selected as the recommendation for Montebello Elementary/Middle School.



Site Organization

- Combined student play areas are not dedicated, limited in size, and include Pre-K students with older elementary students
- Proposed bus drop off into the site could be improved
- Utilize Community Parking adjacency with proposed Community building location



Building Organization

- Pre-K, Kindergarten and primary elementary students are not located on the main entrance floor level
- Proposed Dining/Kitchen location are counter-intuitive for direct access to playfields/natural daylighting
- The relocated Art room to the lower level removes this core educational space from the main classroom areas to the most remote portion of the building.
- Community space located within the core support areas containing Music/Gymnasium creates safety/security concerns



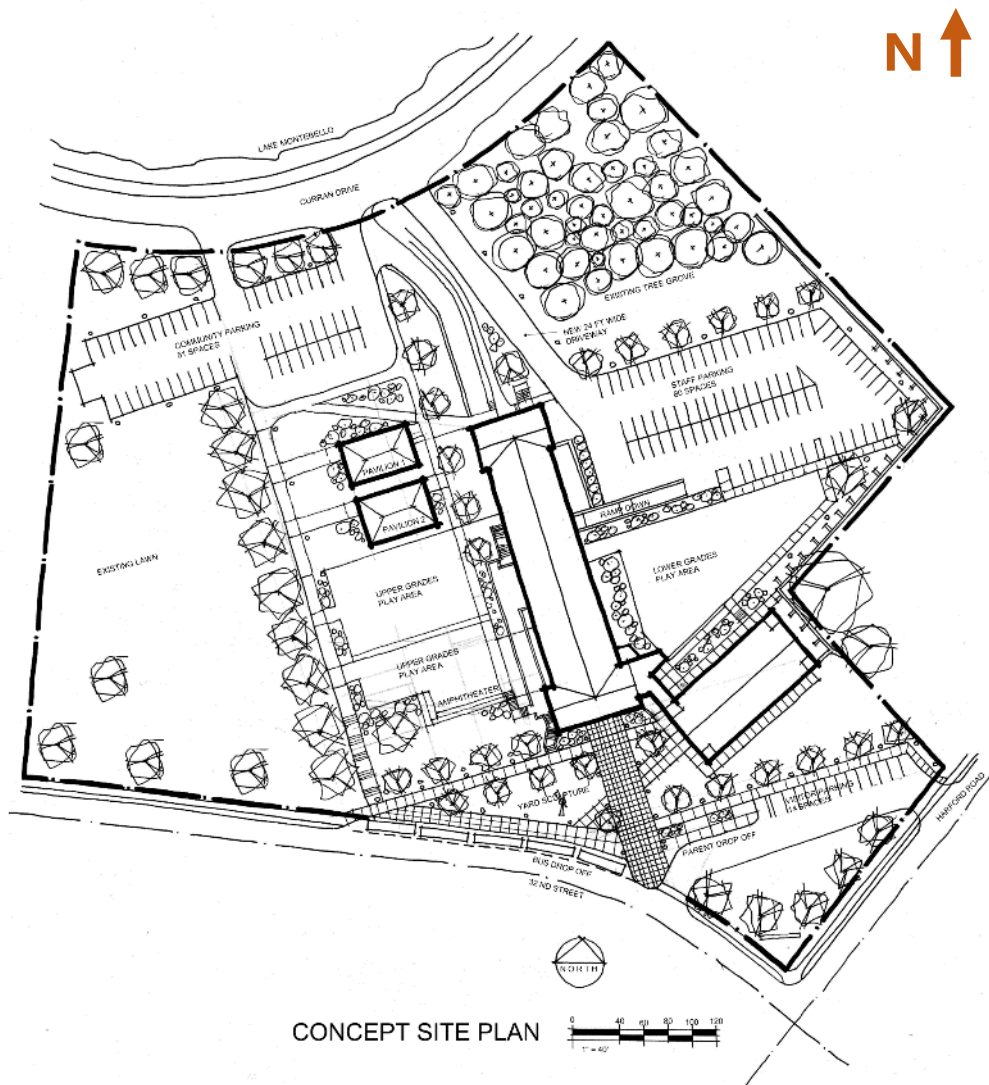
Comprehensive renovations to Montebello PK-8 Elementary/Middle School

- 537 Student Capacity
- Strong Connection to the Community
- Provide dedicated play areas for student population
- Locate Pre-K through 2nd grade on main entrance floor level for primary student access
- Promote Safety and Security through Design
- Sustainable Design – LEED Silver Certification
- Daylight and Views for all Classroom and Learning Spaces
- Community space location to improve community access and enhance safety/security



Comprehensive renovations to Montebello PK-8 Elementary/Middle School

- Holistic Approach to Design
- Engaging People & Places to create learning opportunities
- 21st Century design – includes collaborative/flexible learning spaces
- Integration of interiors and furniture enhance educational spaces
- Interior finishes that reflect schools' values & traditions
- Creating dynamic learning environments through use of color & patterns.
- Durable, cost effective materials help control life cycle costs



Retention of Existing Site Features

- Community Access/Parking to North
- Improvements to existing features

Safety & Security

- Defined main entrance
- Secured K-Play area
- Dedicated staff, visitor, and community parking

Site Challenges

- Topography and security

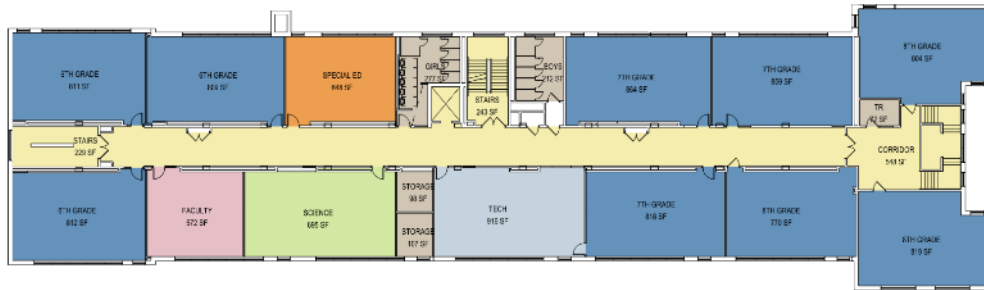
Stormwater Management

- Micro-bioretenion facilities

Pedestrian Circulation & Community Connectivity

- Intuitive pathways and wayfinding
- Enhanced community support and opportunities

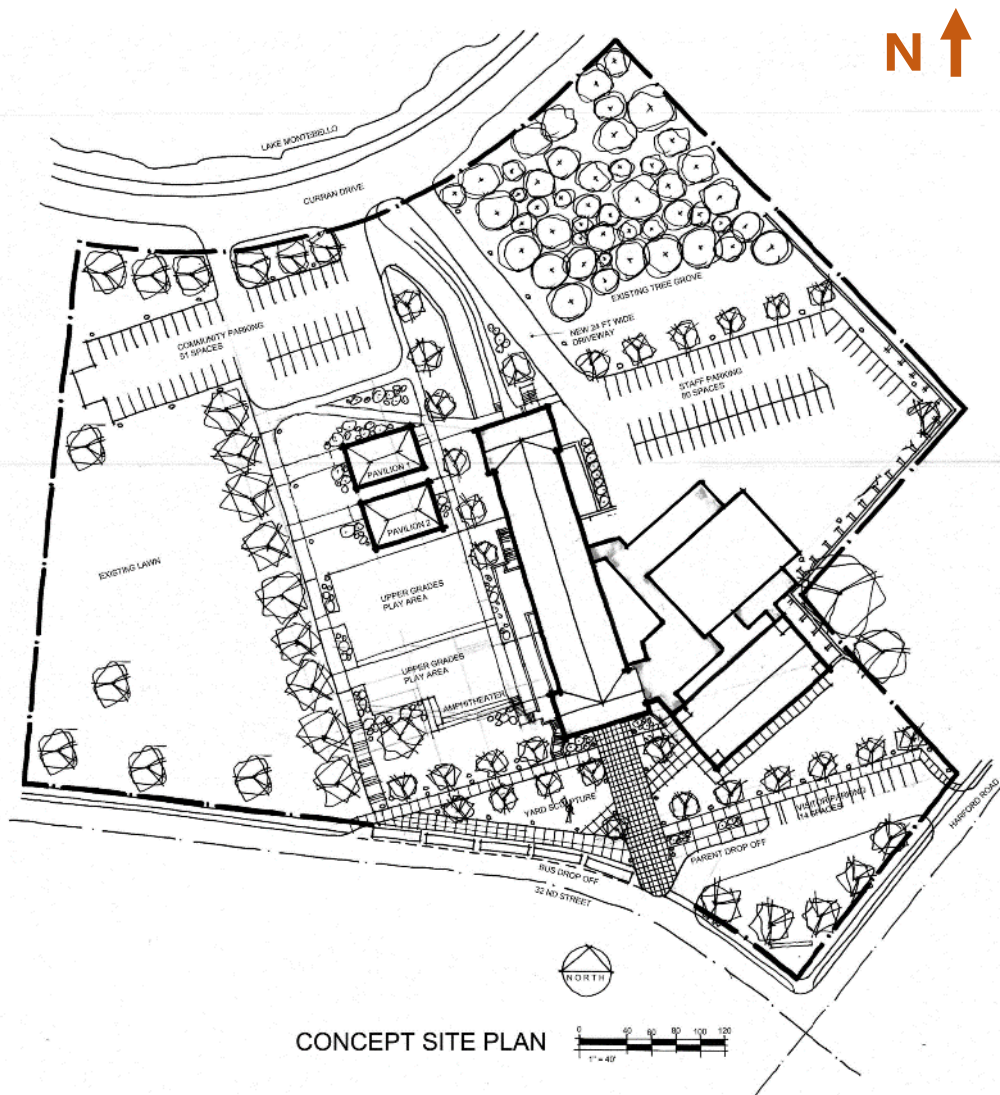




2 OVERALL SECOND FLOOR PLAN
A1.2 1/16" = 1'-0"



1 OVERALL FIRST FLOOR PLAN
A1.2 1/16" = 1'-0"



Retention of Existing Site Features

- Community Access/Parking to North
- Improvements to existing features

Safety & Security

- Defined main entrance
- Secured K-Play area
- Dedicated staff, visitor, and community parking

Site Challenges

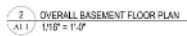
- Topography and security

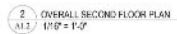
Stormwater Management

- Micro-bioretenion facilities

Pedestrian Circulation & Community Connectivity

- Intuitive pathways and wayfinding
- Enhanced community support and opportunities





Separate Public & Community Spaces from Academic Wing

Pre-K and K classrooms located on the main entrance floor with direct access to their play area

Improved vertical/horizontal building circulation

Grade groupings are separated by floor

Pre-K and K classrooms located on the main entrance floor with direct access to their play area

Cluster Pre-K, Kindergarten Classrooms

Create separate play areas dedicated by grade groupings

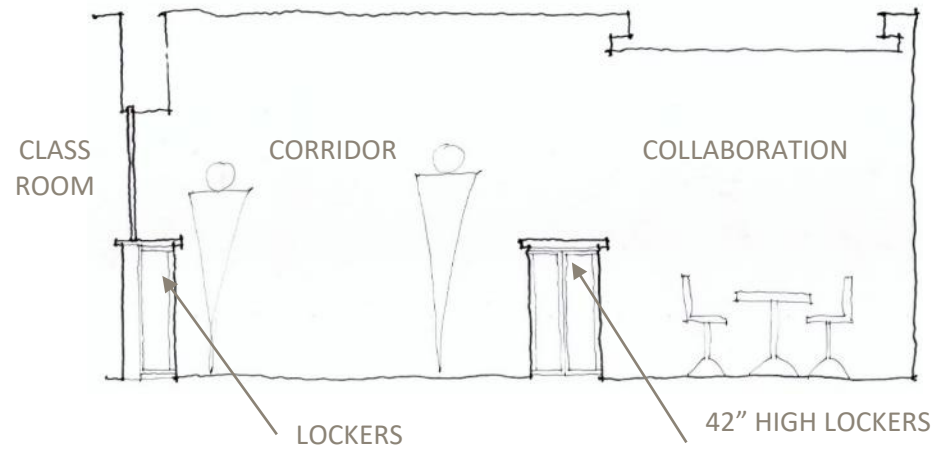
Provide centrally located Collaborative Learning Spaces within each classroom area

Provide daylighting into all learning spaces

Security is enhanced with the ability to secure the academic wings during community use







Schematic Design:	Winter/Spring 2020*
Design Development:	Spring 2020*
Construction Documents:	Summer 2020*
Bidding:	Fall/Winter 2020/2021*
Begin Construction:	Fall 2020*
Substantial Completion:	Summer 2022*

** Dates listed are based on a projected schedule and are subject to change.*

www.baltimore21stcenturyschools.org

21st Century School Buildings Program

Baltimore City Public Schools

200 East North Avenue Room 407-B

Baltimore MD 21202

(443) 642-4600

Dorothy Hellman

Executive Director, 21st Century Buildings Program

Baltimore City Public Schools

Gary McGuigan

Executive Vice President, Capital Development Division

Maryland Stadium Authority

Tisha Edwards

Mayor's Health, Human Services, Education and Youth

City of Baltimore – Office of Children and Family Success

Robert Gorrell

Executive Director, Public School Construction Program

State of Maryland

Thank You.

This presentation was brought to
you by the 21st Century School
Buildings Program.



BALTIMORE CITY
PUBLIC SCHOOLS

