



21st Century School Buildings Program

Montebello Elementary / Middle School

COMMUNITY MEETING Schematic Design Presentation | May 06, 2020

BALTIMORE CITY
PUBLIC SCHOOLS



Introductions and Agenda

Presenters

Renee Stainrod

Community & Public Relations Manager
21st Century School Buildings Program
Baltimore City Public Schools

Ivy McNeill

Engagement Program Coordinator
21st Century School Buildings Program
Baltimore City Public Schools

Justin Wood

Project Manager
21st Century School Buildings Program
Maryland Stadium Authority

Todd Vukmanic

Project Manager
Crabtree Rohrbaugh & Associates

Agenda

Introductions**Overview****Pre-Design**

- . Feasibility Study

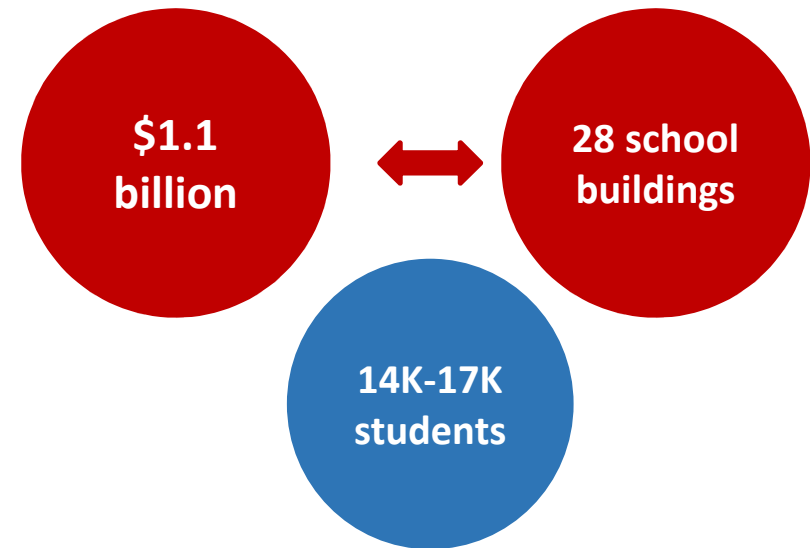
Design

- . Montebello Design Goals
- . Previous Concept Design
- . Schematic Design Plans
- . Building Organization
- . Classrooms and Other Areas
- . Project Schedule

Memorandum of Understanding (MOU)

The Baltimore City Public School System (City Schools) Construction and Revitalization Act of 2013 resulted in a partnership between:

- City Schools
- Maryland Stadium Authority
- City of Baltimore
- IAC (Interagency Commission on Public School Construction)





Through the ambitious 21st Century School Buildings Program, students in Baltimore City will benefit from:

- New or renovated school buildings across the city
- School environments that support teaching and learning to prepare students for college and career success
- Schools that become hubs of resources supporting entire communities
- Modern, efficient and inspiring educational facilities that also provide recreation and community use
- Partnerships that encourage businesses and neighborhood residents to connect with their local schools.

A Feasibility Study is an analysis of the existing condition of the site and building components to include systems, elevations, other planning and design considerations.

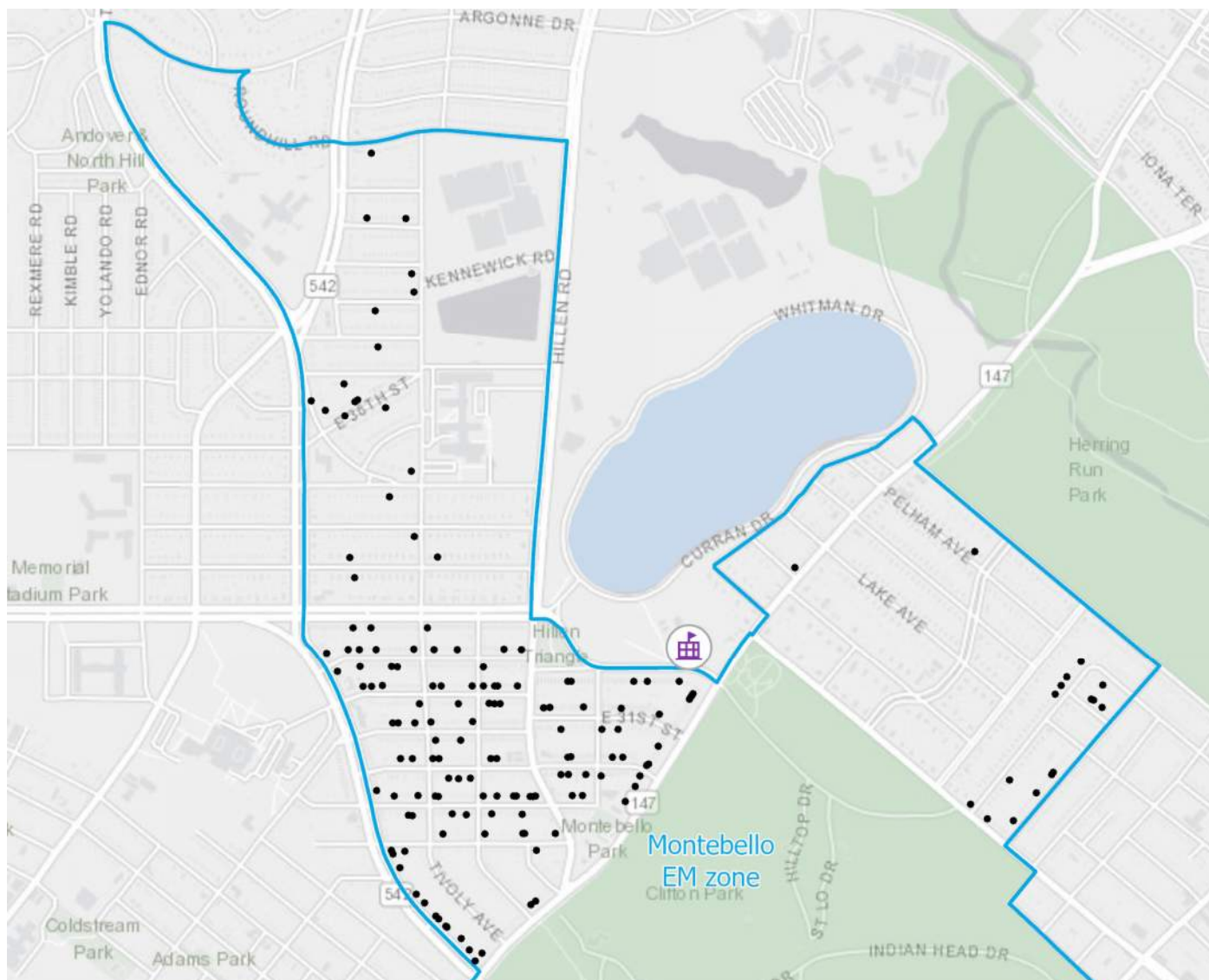
The study produced two possible solutions
(renovation & replacement options) that address:

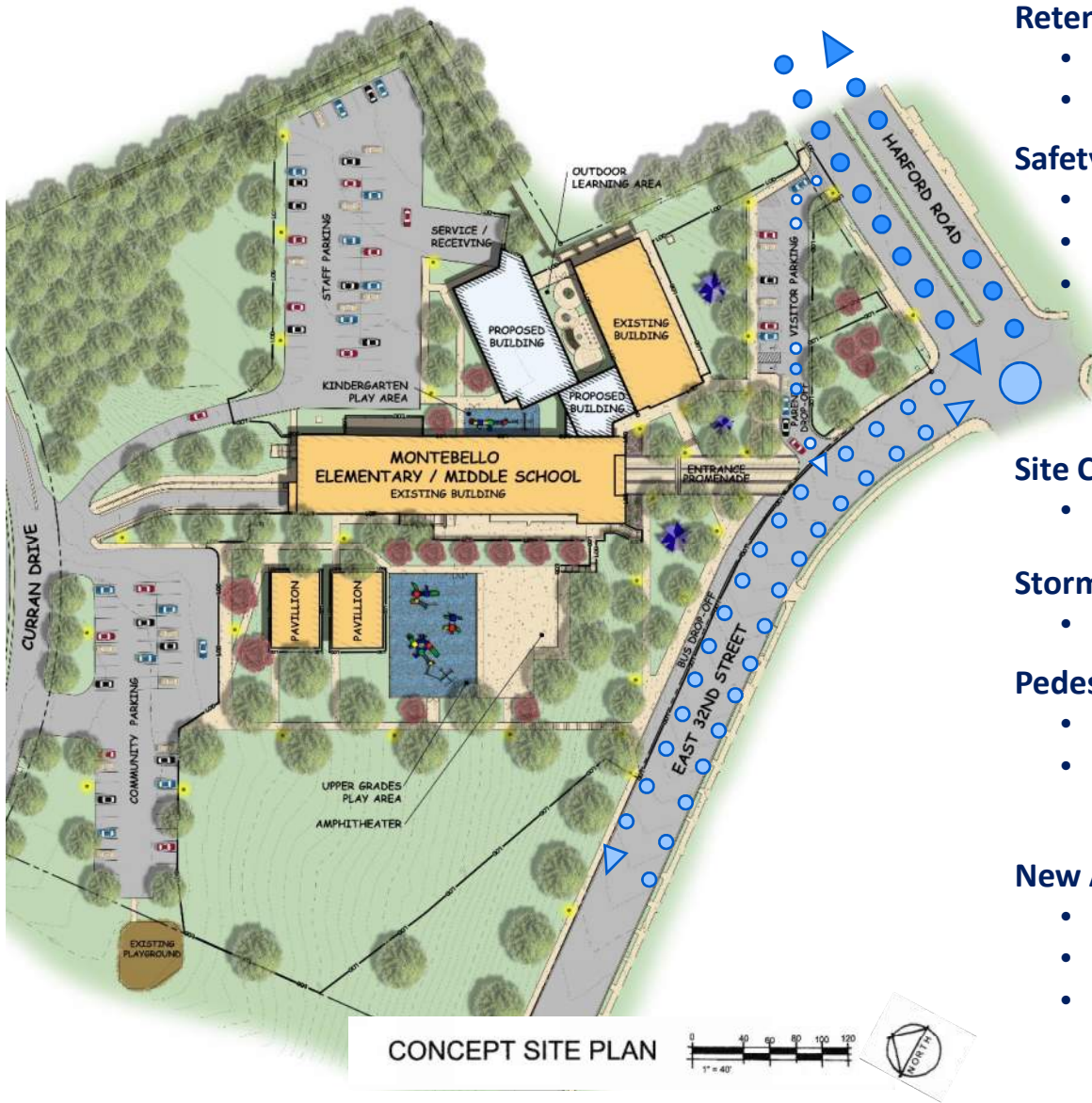
- **Educational Specifications:** determine building deficiencies & ability to accomplish goals of the project
- **Budgets:** including 40-Year Life Cycle and schedule for all options
- **Option #2 Renovation/Addition:** was selected as the recommendation for Montebello Elementary/Middle School.



Comprehensive renovations to Montebello PK-8 Elementary/Middle School

- ~600 student capacity
- Strong connection to community
- Dedicated play areas
- Promote safety & security
- Sustainable design – LEED Silver
- Daylight & views for all learning spaces
- Community space location to improve community access
- 21st century design – flexible learning spaces
- Durable, cost effective materials





Retention of Existing Site Features

- Community access/parking to north
- Improvements to existing features

Safety & Security

- Defined main entrance
- Secured K-Play area
- Dedicated staff, visitor, and community parking

Site Challenges

- Topography and security

Stormwater Management

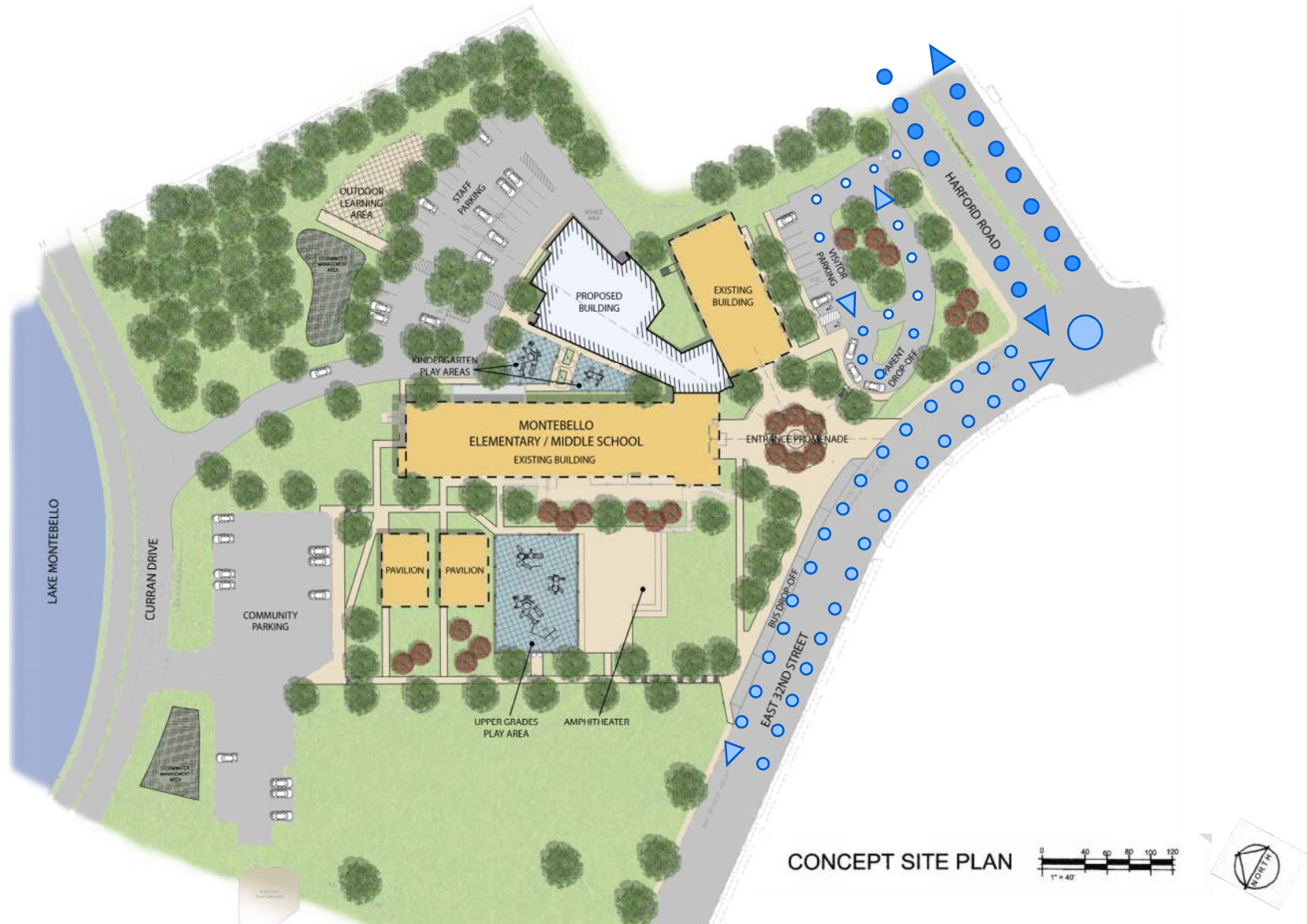
- Mico-bioretenion facilities

Pedestrian Circulation & Community Connectivity

- Intuitive pathways and wayfinding
- Enhanced community support and opportunities

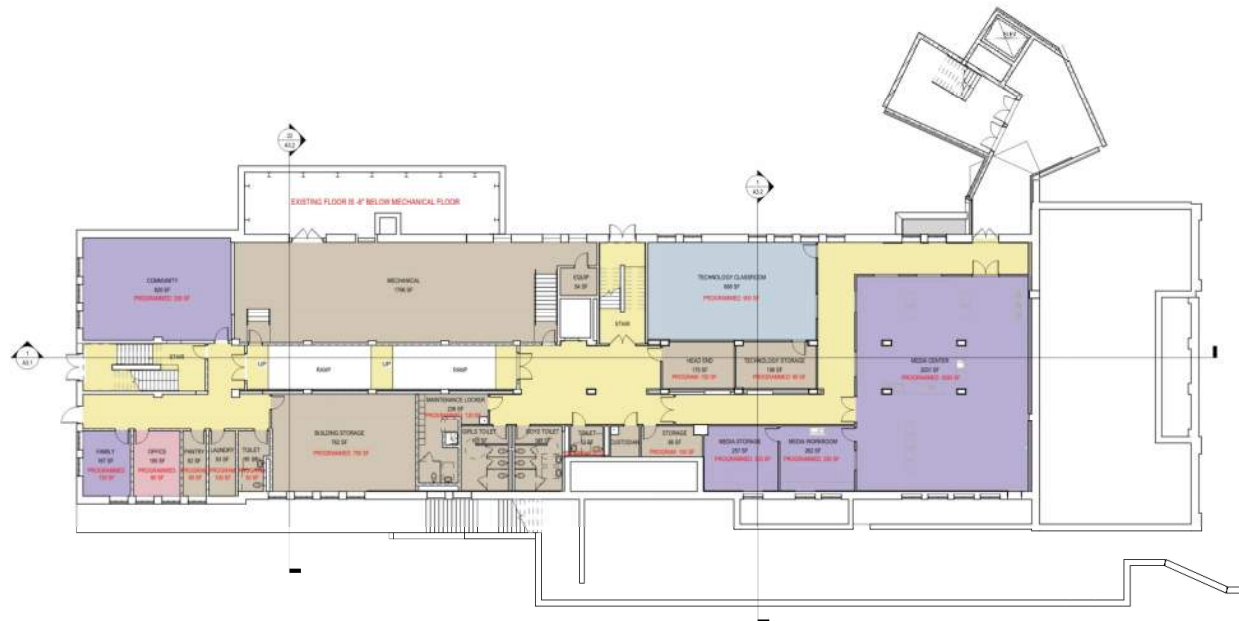
New Addition

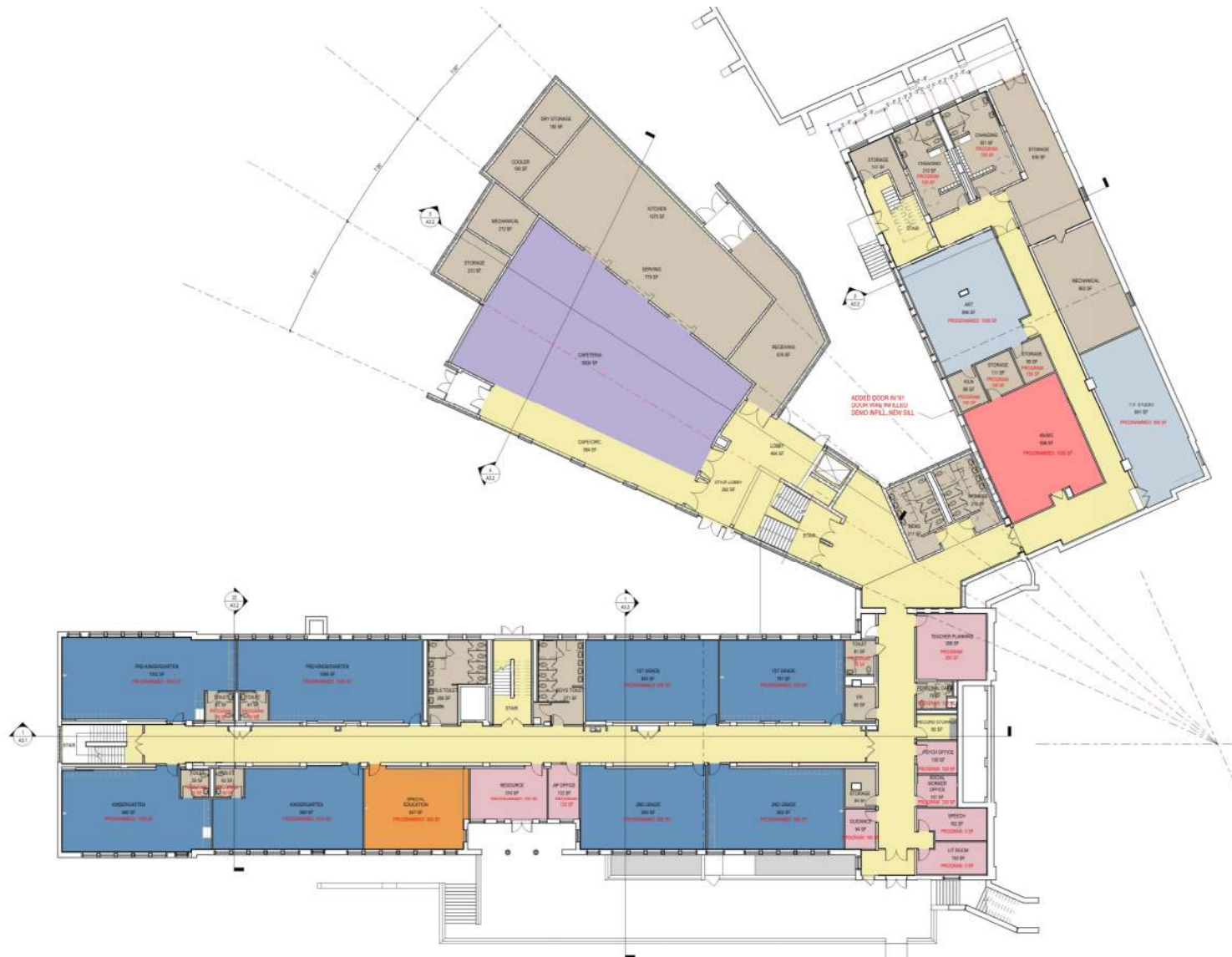
- Cafeteria and Kitchen
- Kitchen support spaces
- Receiving and support for kitchen



Design

Schematic Design Basement Level Floor Plan









- | |
|---|
| Separate public & community spaces from academic wing |
| Pre-K and K classrooms located on the main entrance floor with direct access to their play area |
| Improved vertical/horizontal building circulation |
| Grade groupings are separated by floor |
| Pre-K and K classrooms located on the main entrance floor with direct access to their play area |
| Cluster Pre-K, Kindergarten classrooms |
| Create separate play areas dedicated by grade groupings |
| Provide centrally located collaborative learning spaces within each classroom area |
| Provide daylighting into all learning spaces |
| Security is enhanced with the ability to secure the academic wings during community use |



Design

Science, Music and Art Classrooms



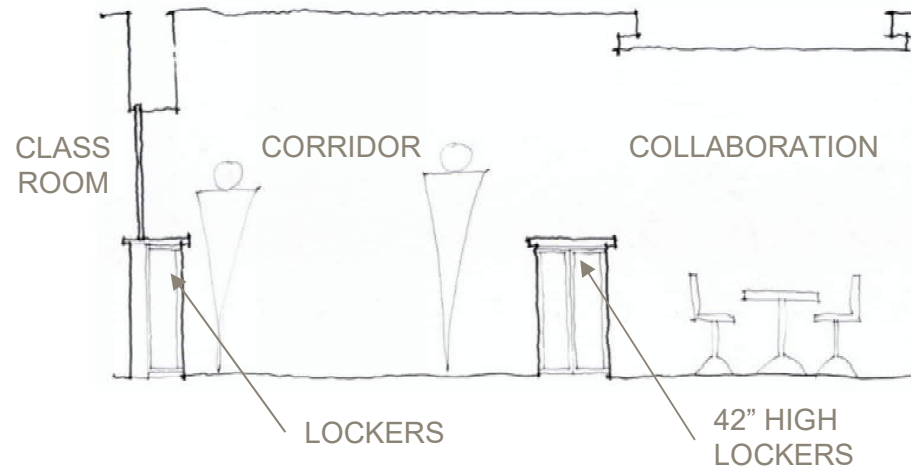
Design

Gymnasium



Design

Collaborative Areas



Schematic Design:	Winter 2019/Spring 2020*
Design Development:	Spring 2020*
Construction Documents:	Summer 2020*
Move Out Date	August 2020*
Bidding:	Fall/Winter 2020*
Begin Construction:	Winter 2020*
Substantial Completion:	Summer 2022*
Move In Date	August 2022*

** Dates listed are based on a projected schedule and are subject to change, given the current climate of social distancing.*

Program Information

**21st Century School Buildings
Program Office**
(443) 642-4600

www.baltimore21stcenturyschools.org



21stCSBaltimore



21stCenturySchoolBuildingsProgram



21stCSBaltimore

Thank You!



This presentation was brought to you by
the 21st Century School Buildings Program.

www.baltimore21stcenturyschools.org

21st Century School Buildings Program

Baltimore City Public Schools
200 East North Avenue Room 407-B
Baltimore, MD 21202
(443) 642-4600

Dorothy Hellman

Executive Director, 21st Century Buildings Program
Baltimore City Public Schools

Gary McGuigan

Executive Vice President, Capital Development
Division
Maryland Stadium Authority

Robert Gorrell

Executive Director, Public School Construction
Program
State of Maryland

BALTIMORE CITY
PUBLIC SCHOOLS

