



# 21<sup>st</sup> Century School Buildings Program

MARY E. RODMAN ELEMENTARY SCHOOL  
CONSTRUCTION UPDATE MEETING: June 9, 2020

BALTIMORE CITY  
PUBLIC SCHOOLS



## Introductions

**Renee Stainrod**

Manager, Community & Public Relations  
21<sup>st</sup> Century School Buildings Program

**Alicia Thomas**

Coordinator, Community & Public Relations  
21<sup>st</sup> Century School Buildings Program

**Justin Wood**

Project Manager  
Maryland Stadium Authority

**Disha Sharma**

Project Architect  
SEI Architects

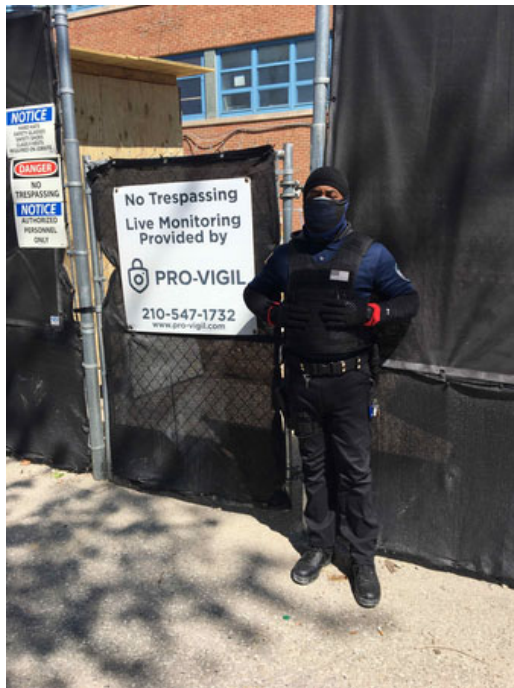
**George Arendt**

Project Manager  
MCN Build / Southway Builders LLC

## Agenda

- **Introductions and Agenda**
- **Site Security**
- **COVID 19 Procedures**
- **Site Logistics Plan**
- **Exterior Work-in-Progress Photos**
- **Building Plan**
- **Interior Work-in-Progress Photos**
- **Upcoming Exterior Work**
- **Contact Information**

- Construction site has safety/security fencing around the entire perimeter for the duration of construction.
- Site is monitored by a series of security cameras and intrusion detection systems.
- Two armed security guards. One at the gates on West Mulberry Street and one at the gates at the end of West Franklin Street.



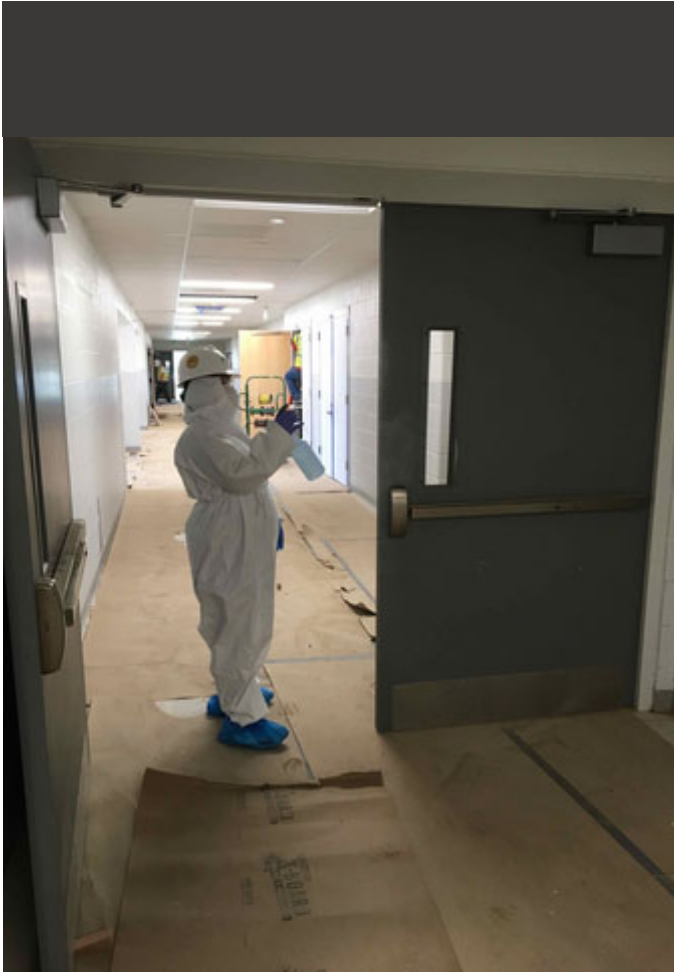


- Commercial construction is on the Governor's list of essential businesses and the Mary E. Rodman Elementary School project has remained open.
- Screening everyone entering the jobsite: Questionnaire and thermal scan temperature.



Handwash stations and sanitizing stations have been set up around the building.

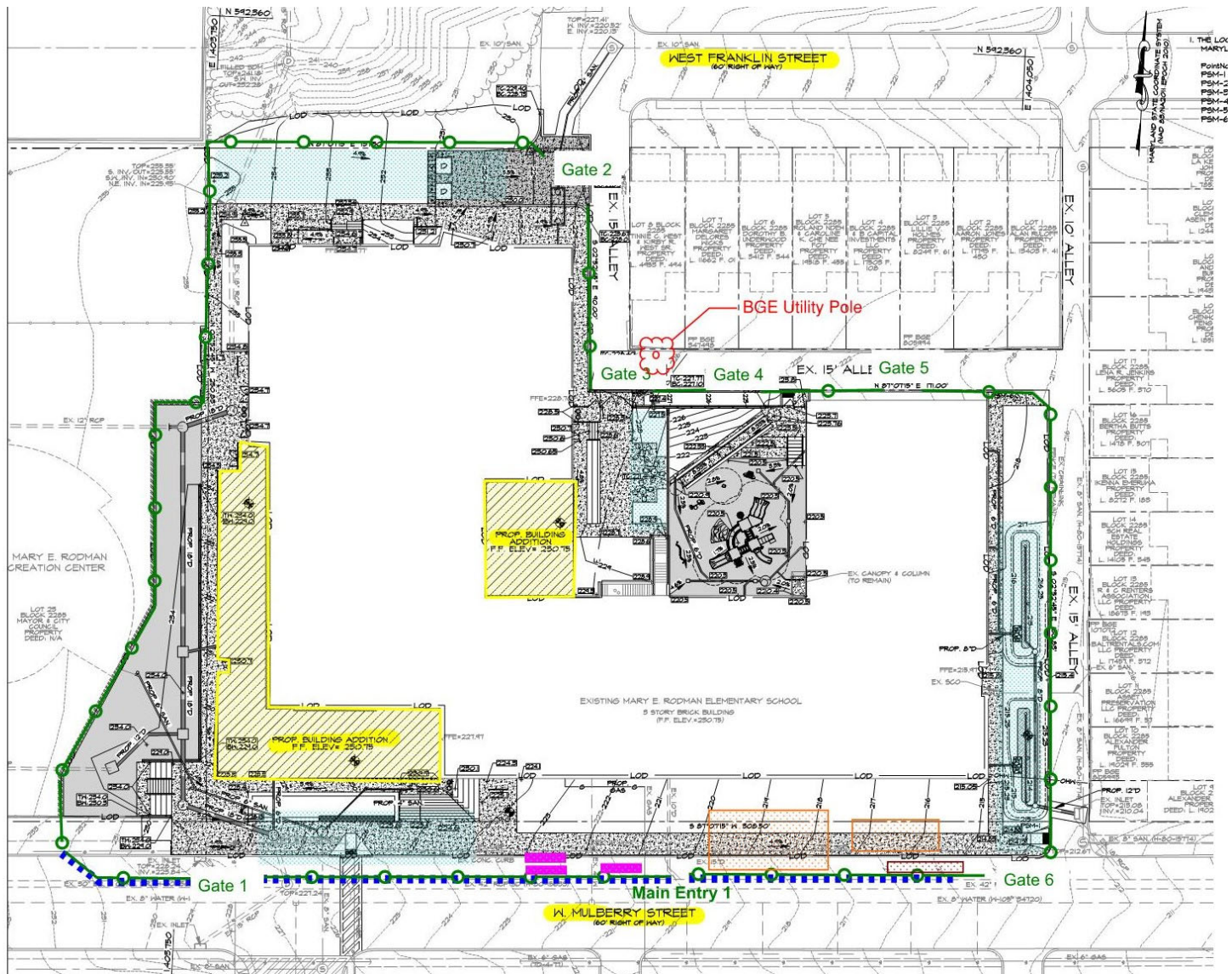




- In addition to maintaining 6-foot separation, we implemented a requirement for face coverings per the CDC's recommendations.
- Meetings are online and paperwork exchange kept to a minimum.
- Provide continuous cleaning on high-touch surfaces.

# CONSTRUCTION

## Site Logistics Plan





CONSTRUCTION

Concrete Work in the Playground & Upper Courtyard Area





CONSTRUCTION

Concrete Work Outside the Gym & Kitchen Area



CONSTRUCTION

Concrete Retaining Wall Between the Parks/Rec & School Building





Brickwork completed and windows are being installed.

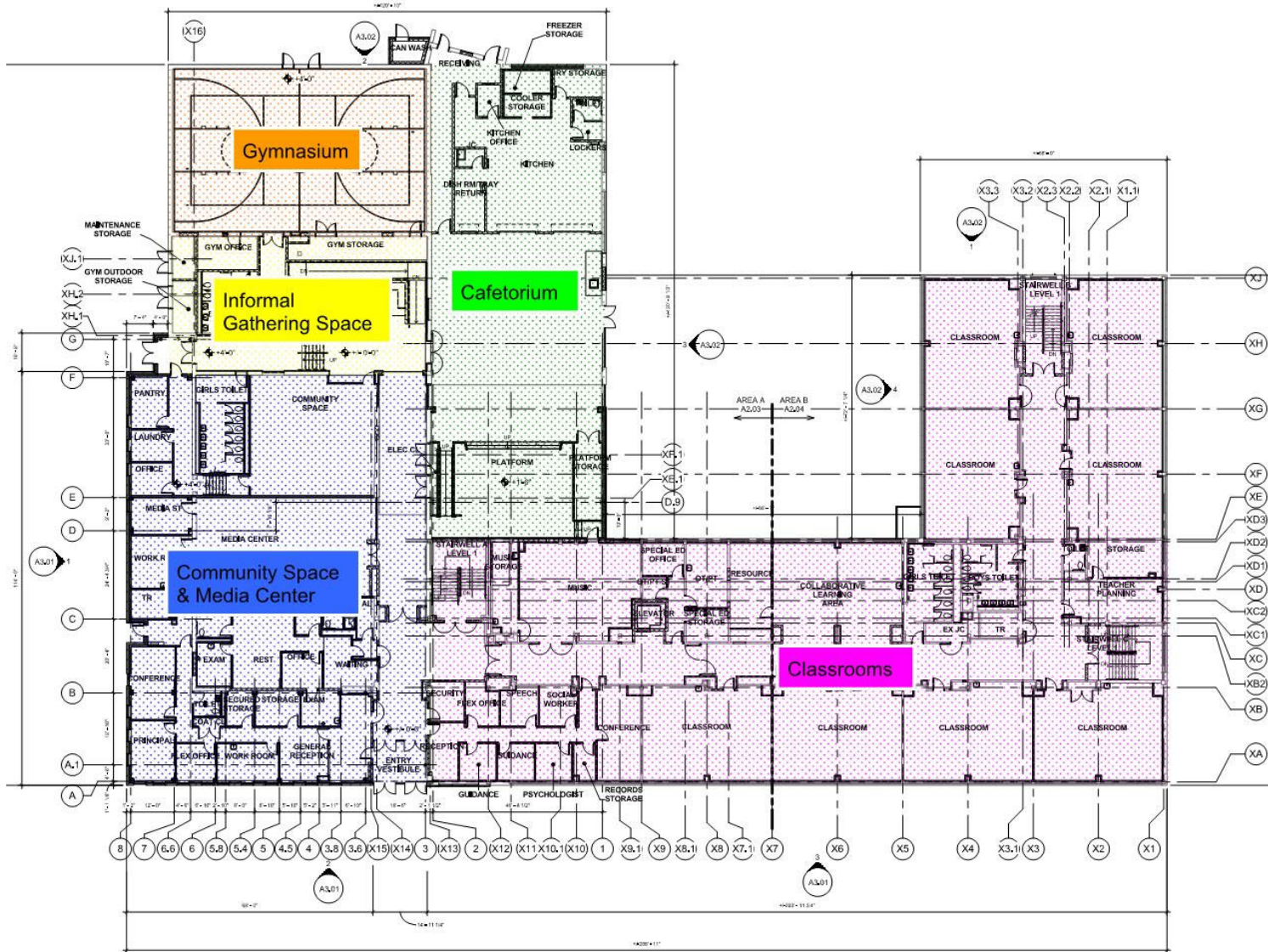




Area along the east elevation where two micro-bioretenion ponds will be installed. Picture of a similar completed pond.







CONSTRUCTION

2<sup>nd</sup> Floor Classrooms Ready for Final Cleaning





**CONSTRUCTION**

Ground Floor Pre-K Classroom Cubbies and Bathroom



CONSTRUCTION

Music Room



**CONSTRUCTION**

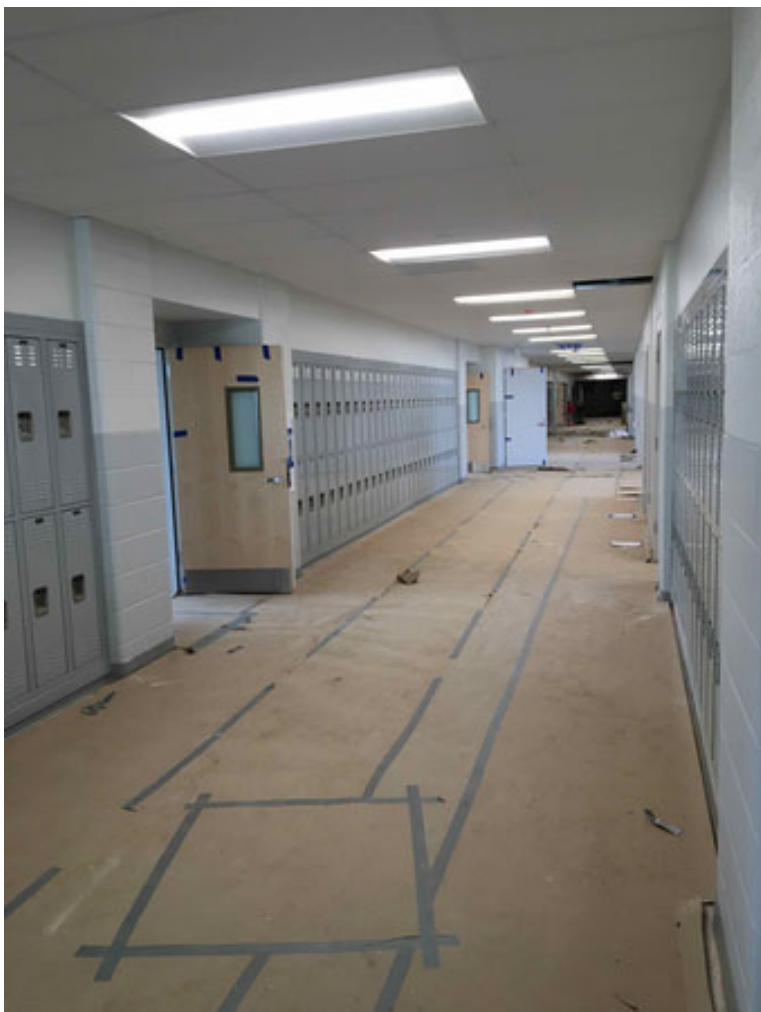
1<sup>st</sup> Floor Collaborative Learning Area





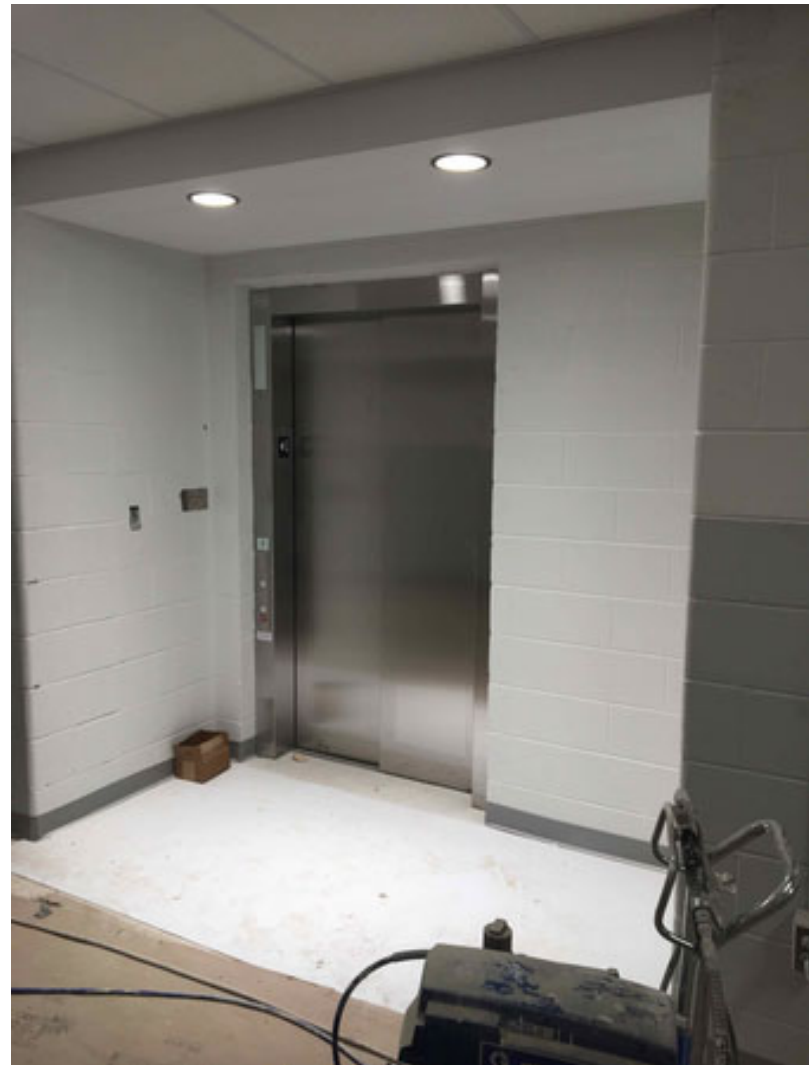
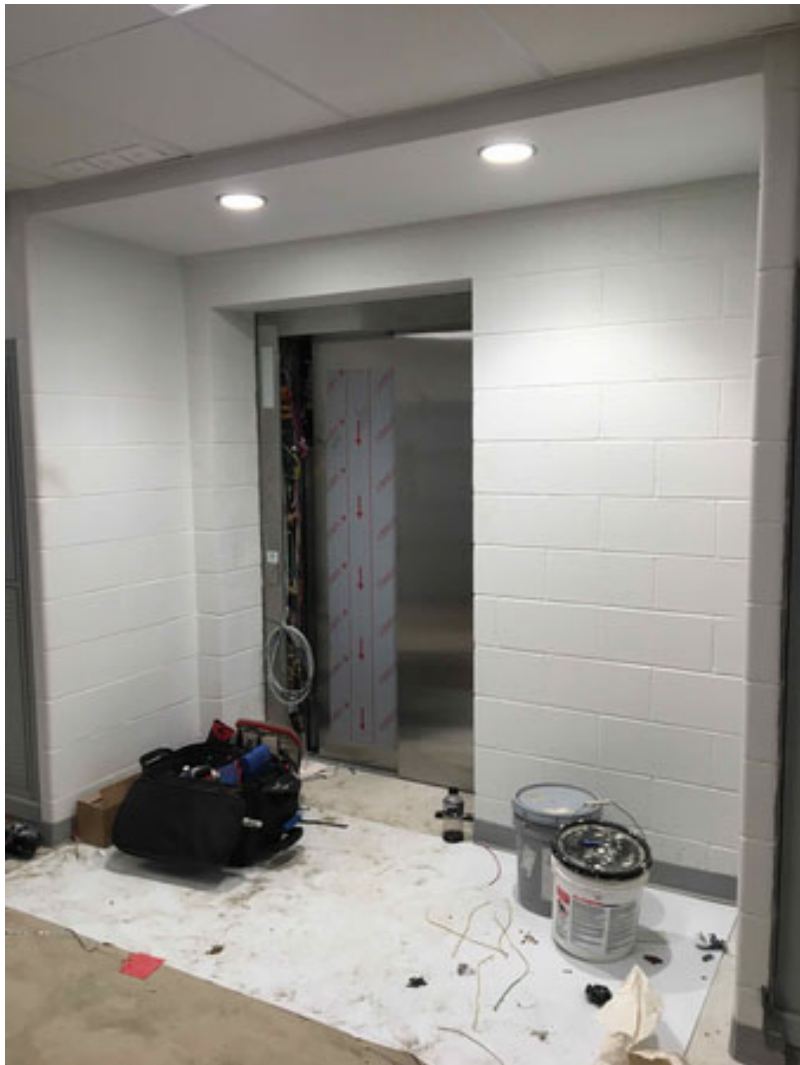
CONSTRUCTION

Hallway Nearing Completion



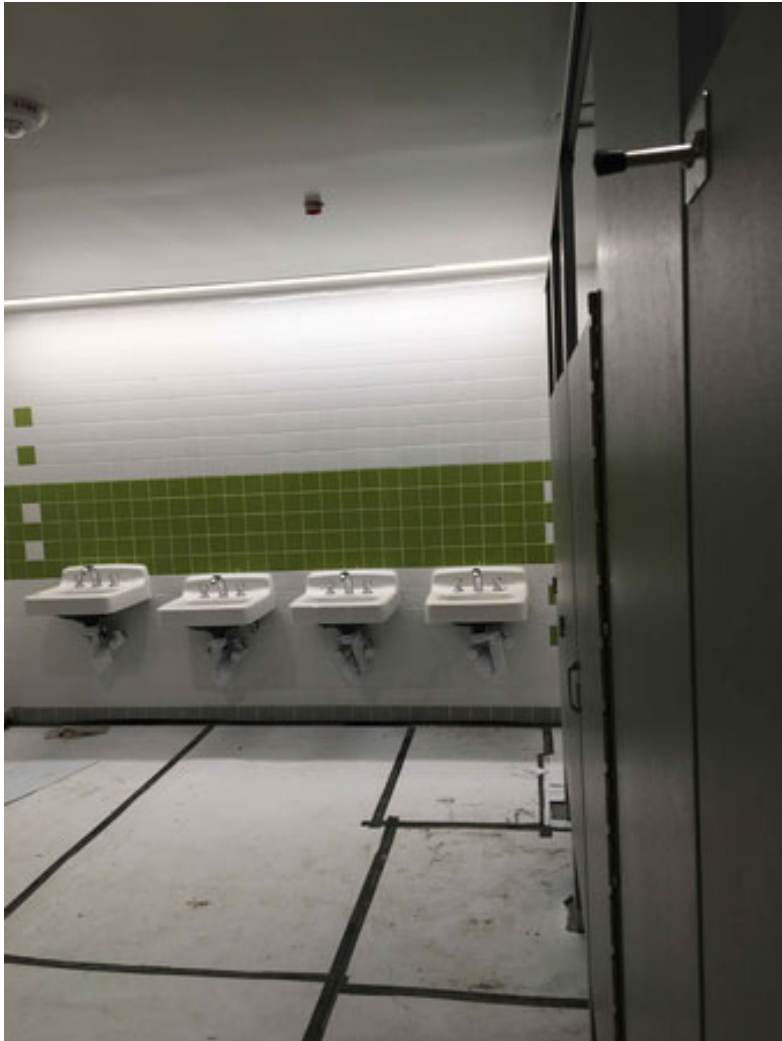
**CONSTRUCTION**

**Elevator Installed & Ready for Final Inspection**



**CONSTRUCTION**

Bathrooms Ready for Accessories & Final Cleaning





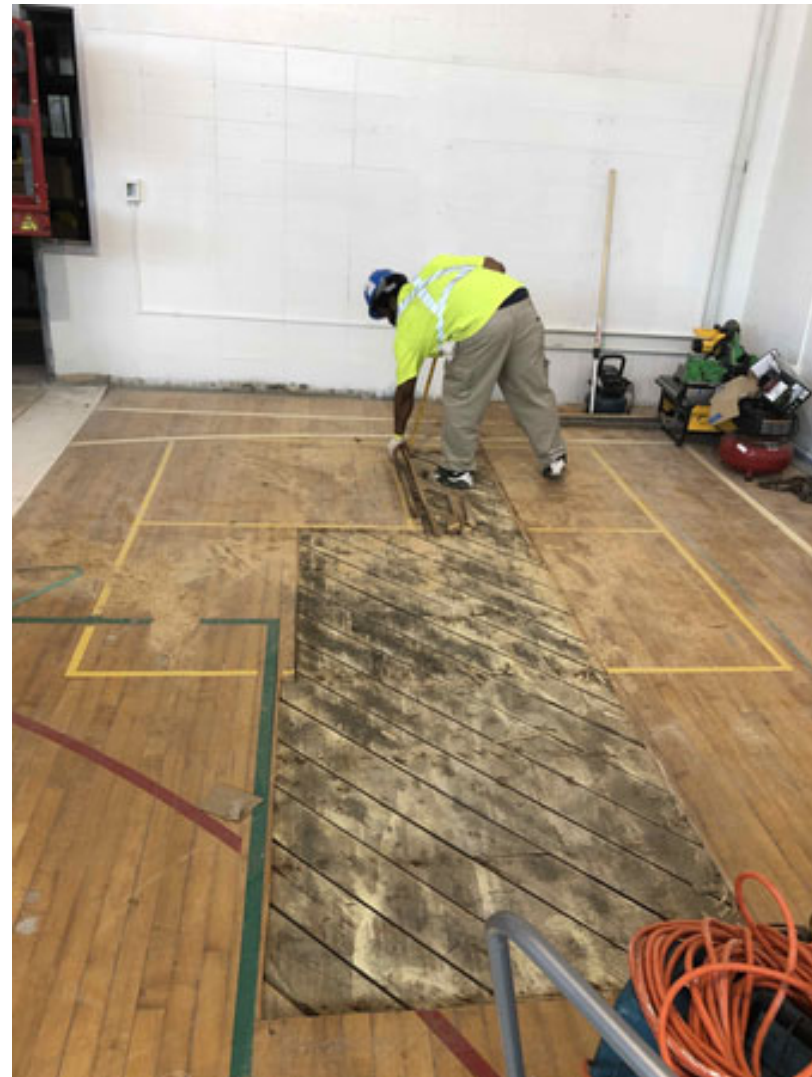
CONSTRUCTION

Cafetorium & Kitchen In Progress



**CONSTRUCTION**

Gym Equipment, Sound Panels & Floor Repairs





CONSTRUCTION

Informal Gathering & Community Space In Progress





- Window installation
- Site concrete: Planter walls, stairs, ramps and curb and gutter
- Landscaping
- Bio-retention ponds
- Furniture delivery and set-up

# Contact Information

## Primary Points of Contact

Chuck Meador, Site Superintendent  
MCN Build / Southway Builders, LLC  
(202) 316-5658 / [charles.meador@mcnbuild.com](mailto:charles.meador@mcnbuild.com)

George Arendt, Project Manager  
(443) 610-8902 / [garendt@southwaybuilders.com](mailto:garendt@southwaybuilders.com)

## Secondary Points of Contact

Justin Wood, Project Manager  
Maryland Stadium Authority  
(410) 925-0255 / [jwood@mdstad.com](mailto:jwood@mdstad.com)

Alicia Thomas, Community & Public Relations Coordinator  
(443) 642-4600 / [athomas03@bcps.k12.md.us](mailto:athomas03@bcps.k12.md.us)

# Program Information

**21<sup>st</sup> Century School Buildings  
Program Office**  
(443) 642-4600

[www.baltimore21stcenturyschools.org](http://www.baltimore21stcenturyschools.org)



**21stCSBaltimore**



**21stCenturySchoolBuildingsProgram**



**21stCSBaltimore**



Thank You!



This presentation is brought to you by the  
21<sup>st</sup> Century School Buildings Program.

[www.baltimore21stcenturyschools.org](http://www.baltimore21stcenturyschools.org)

**21<sup>st</sup> Century School Buildings Program**

Baltimore City Public Schools  
200 East North Avenue Room 407-B  
Baltimore MD 21202  
(443) 642-4600

**Dorothy Hellman**

Executive Director, 21<sup>st</sup> Century Buildings Program  
Baltimore City Public Schools

**Gary McGuigan**

Executive Vice President, Capital Development Division  
Maryland Stadium Authority

**Robert Gorrell**

Executive Director, Public School Construction Program  
State of Maryland

BALTIMORE CITY  
PUBLIC SCHOOLS

