

MARY E. RODMAN ELEMENTARY SCHOOL RENOVATION/ADDITION PROJECT COMMUNITY MEETING

Maryland Stadium Authority
&
Baltimore City Public Schools
21st Century Buildings Program

Presented by
Smolen Emr Ilkovitch Architects
JULY 12, 2019

- Develop Mary E. Rodman to create an inspiring educational environment that is consistent with the 21st Century Schools' program for Baltimore City's public schools.
- Scope of work includes addition and renovation of the existing K-5 school building, originally built in 1962 in the Allendale neighborhood.
 - Area of renovation 73,269 sf
 - Area of addition 7,778 sf
- The proposed building will consolidate Mary E. Rodman Elementary School's student population with nearby Sarah M. Roach Elementary. Thus, increasing the site-specific student capacity from 260 to 537.

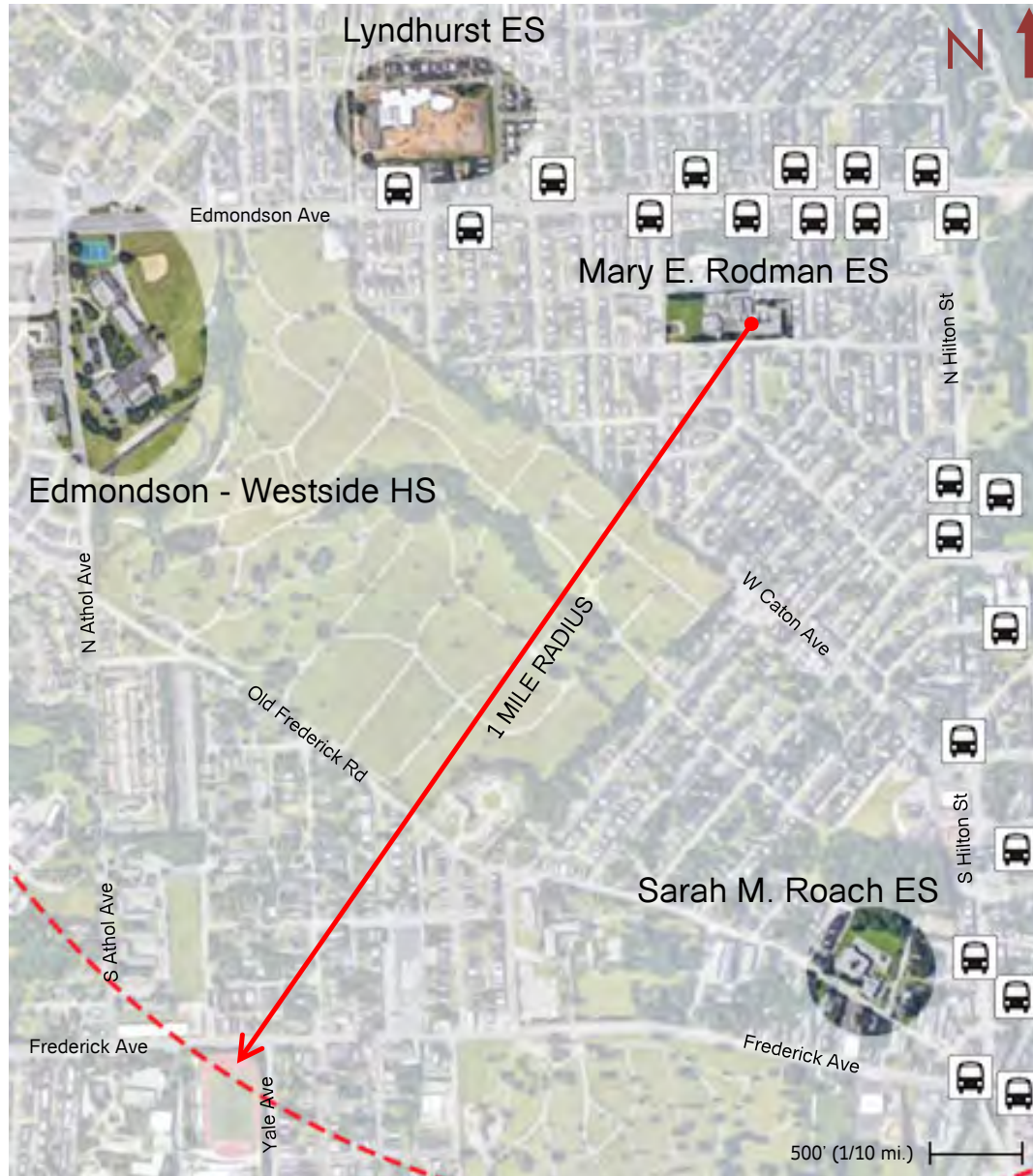


Mary E. Rodman Elementary School

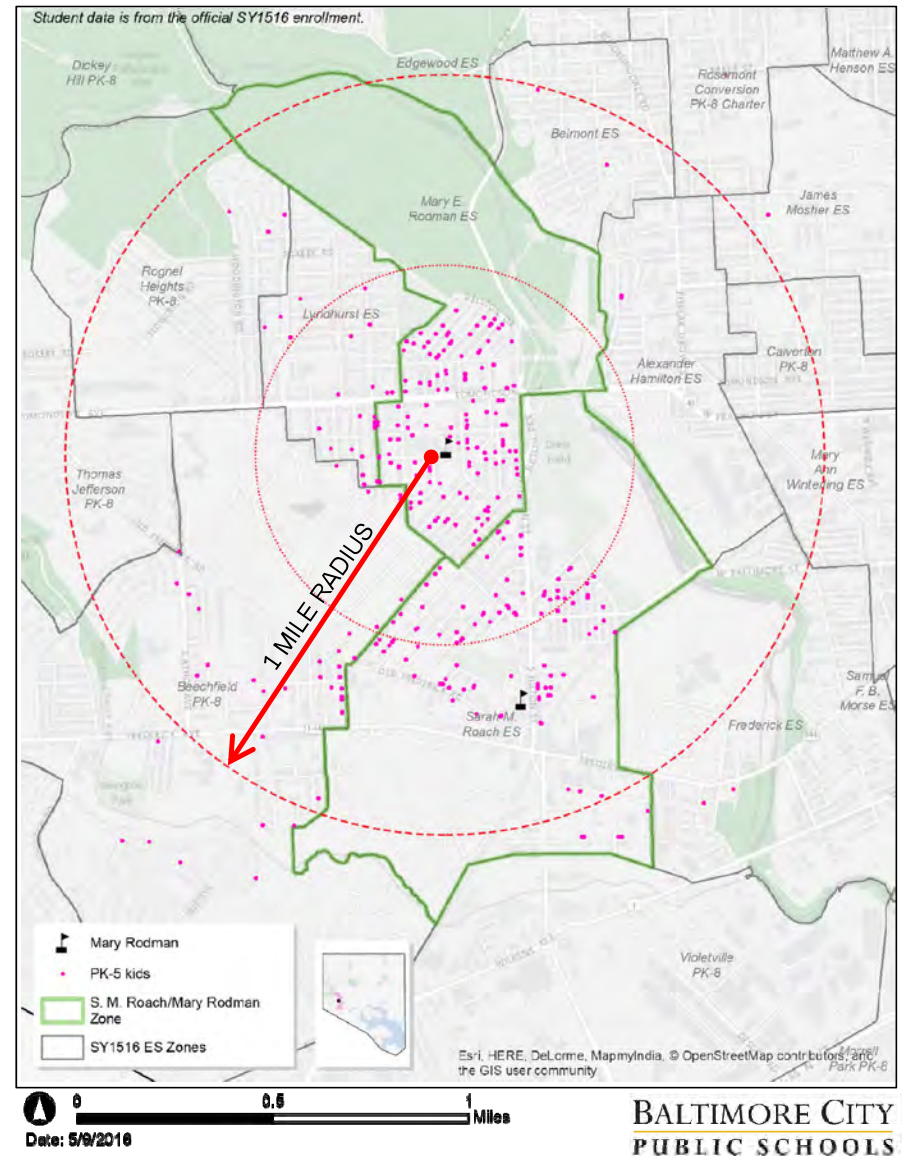
• Urban Context	4
• Site Plan - Existing	9
• Site Plan - Proposed	10
• Site – Front Entry Plaza	11
• Floor Plan	14
• Site – Play Area & North Plaza	17
• Site Plan - Planting	19
• Massing	20
• Material Precedents	22
• Elevations	23
• Renderings	25



Mary E. Rodman Elementary School



Mary Rodman (and Sarah M. Roach) Students







A

W Mulberry St



B

W Mulberry St



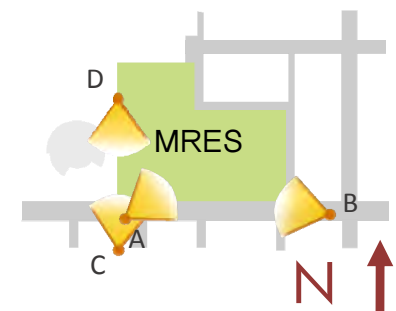
C

N Grantley St



D

West Sidewalk





A

East Alley



B

East Alley



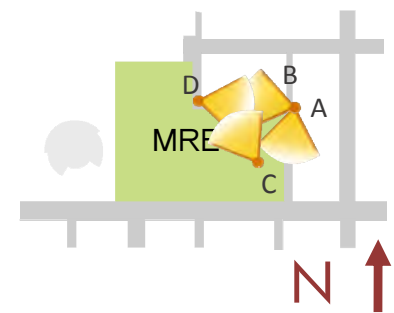
C

Play Area



D

North Alley





A

Franklin St



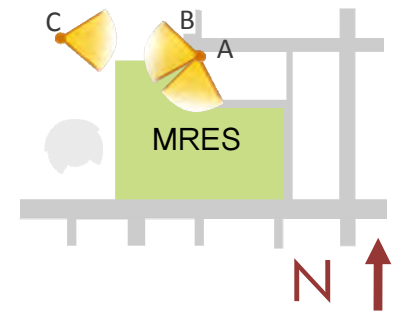
B

Franklin St

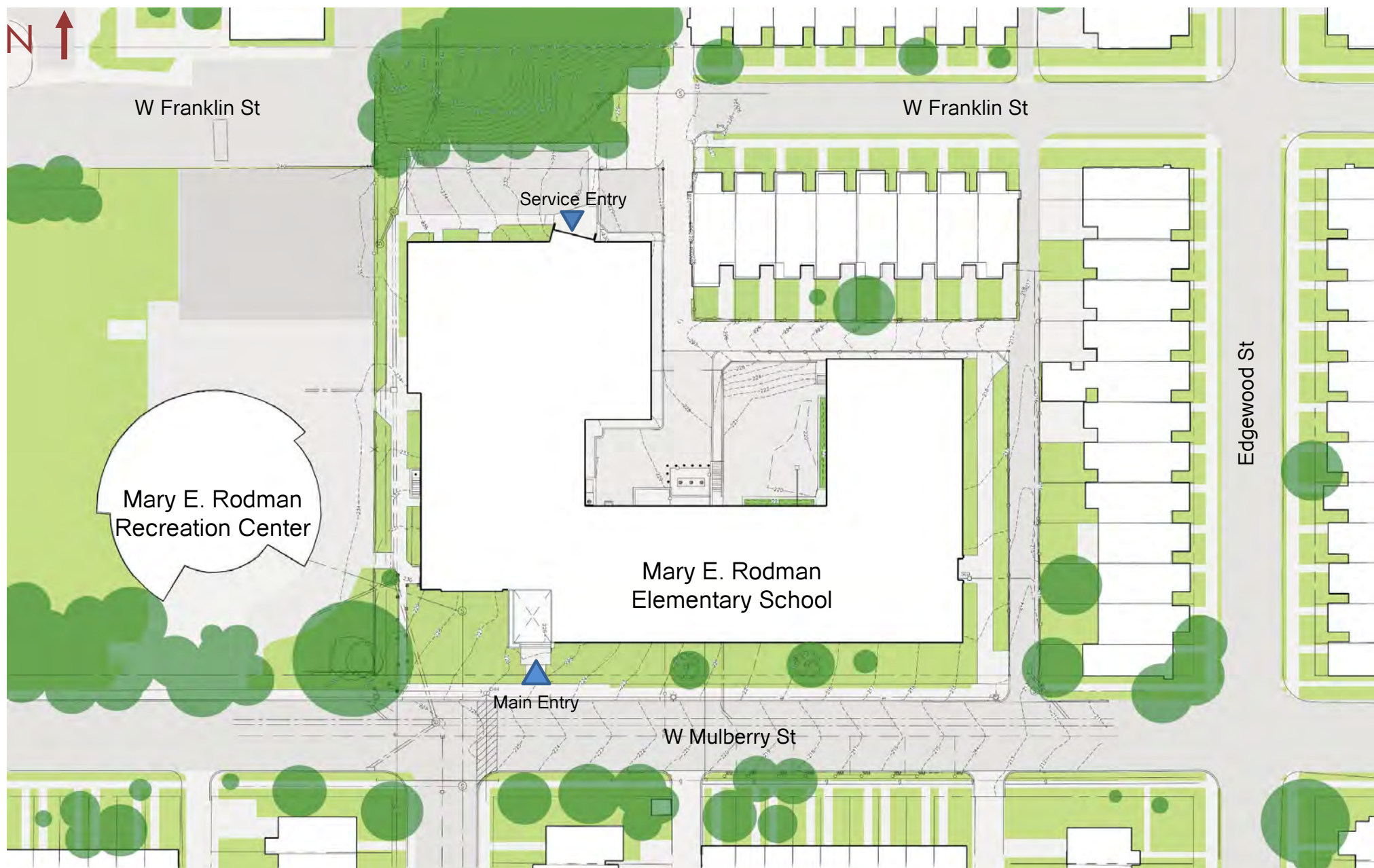


C

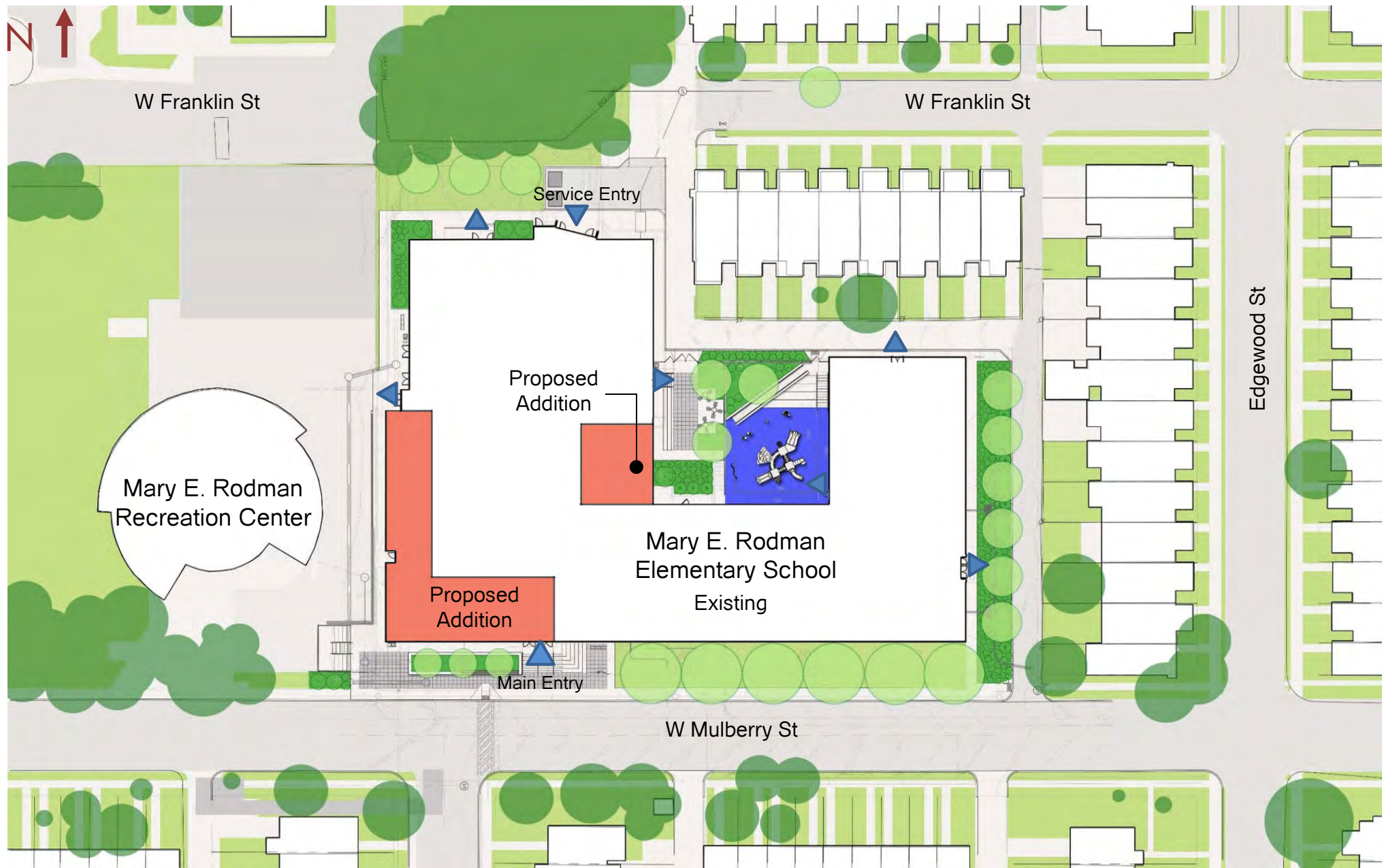
Franklin St



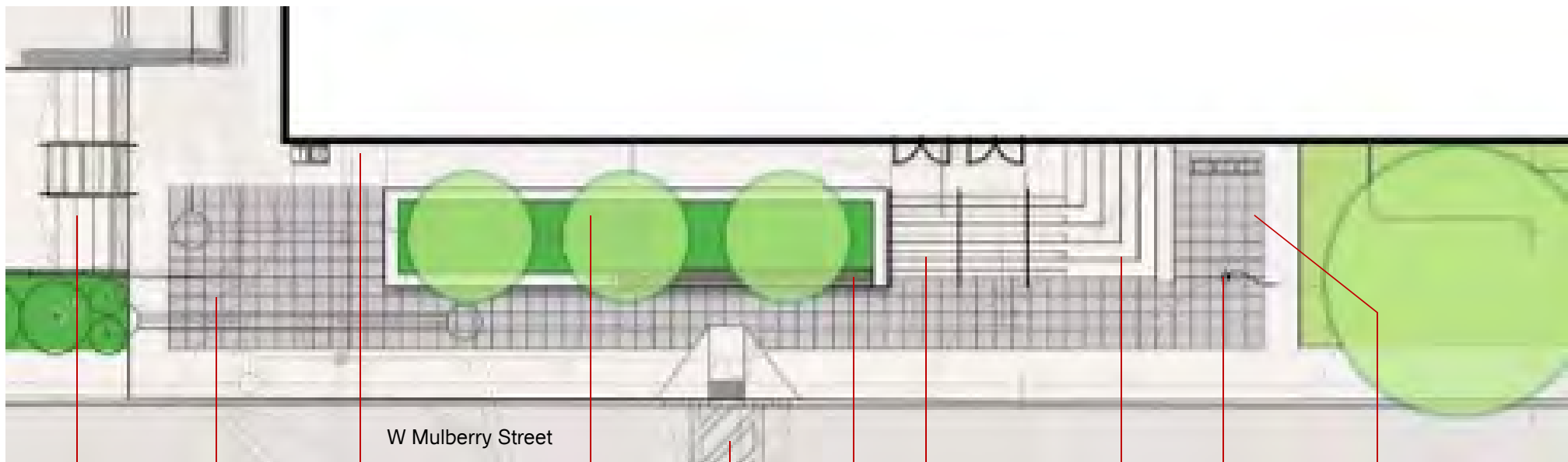
Mary E. Rodman Elementary School



Mary E. Rodman Elementary School



Mary E. Rodman Elementary School



W Mulberry Street

Stair & Seat Stair
with Planting

Plaza with
Pavers

Sloped Walk

Planter with
Flowering Trees

Crosswalk

Wood
Bench

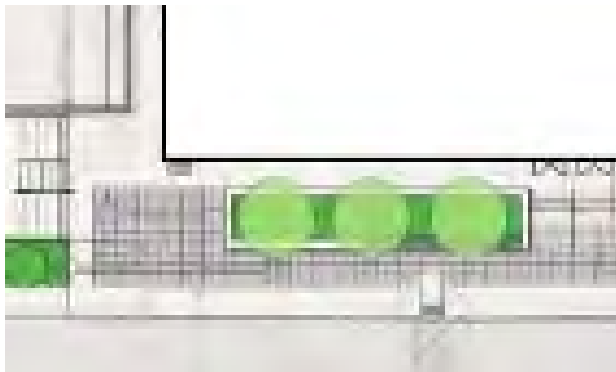
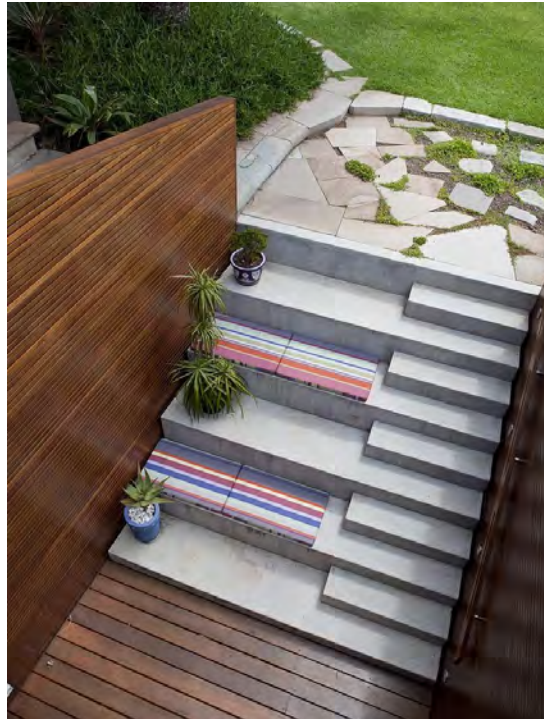
Stair

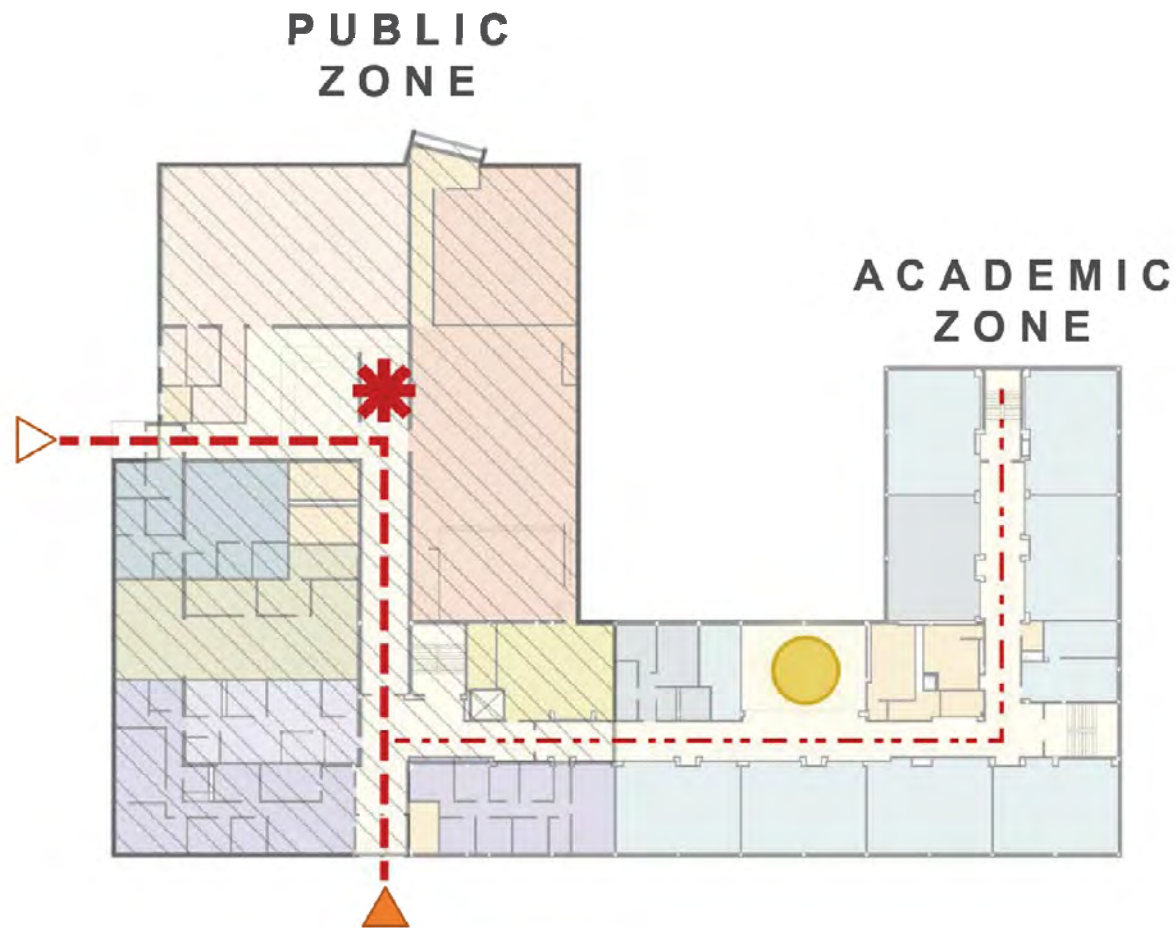
Seat Stair

Flagpole

Bike Racks

Mary E. Rodman Elementary School





LEGEND

- Private Circulation
- Public Circulation
- Corridor Termination

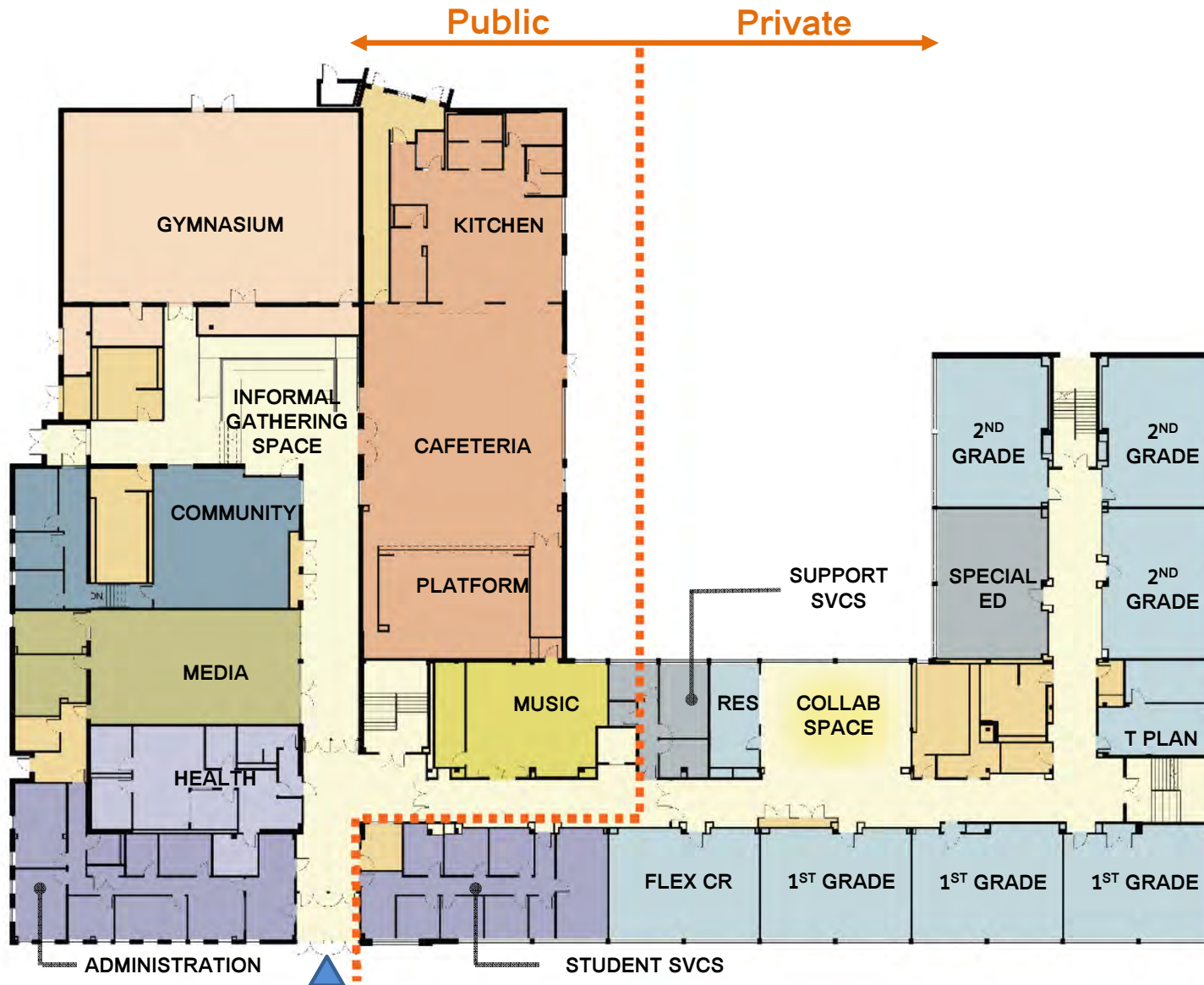
- * Informal Gathering
- Collaboration Space
- Public Space




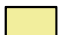











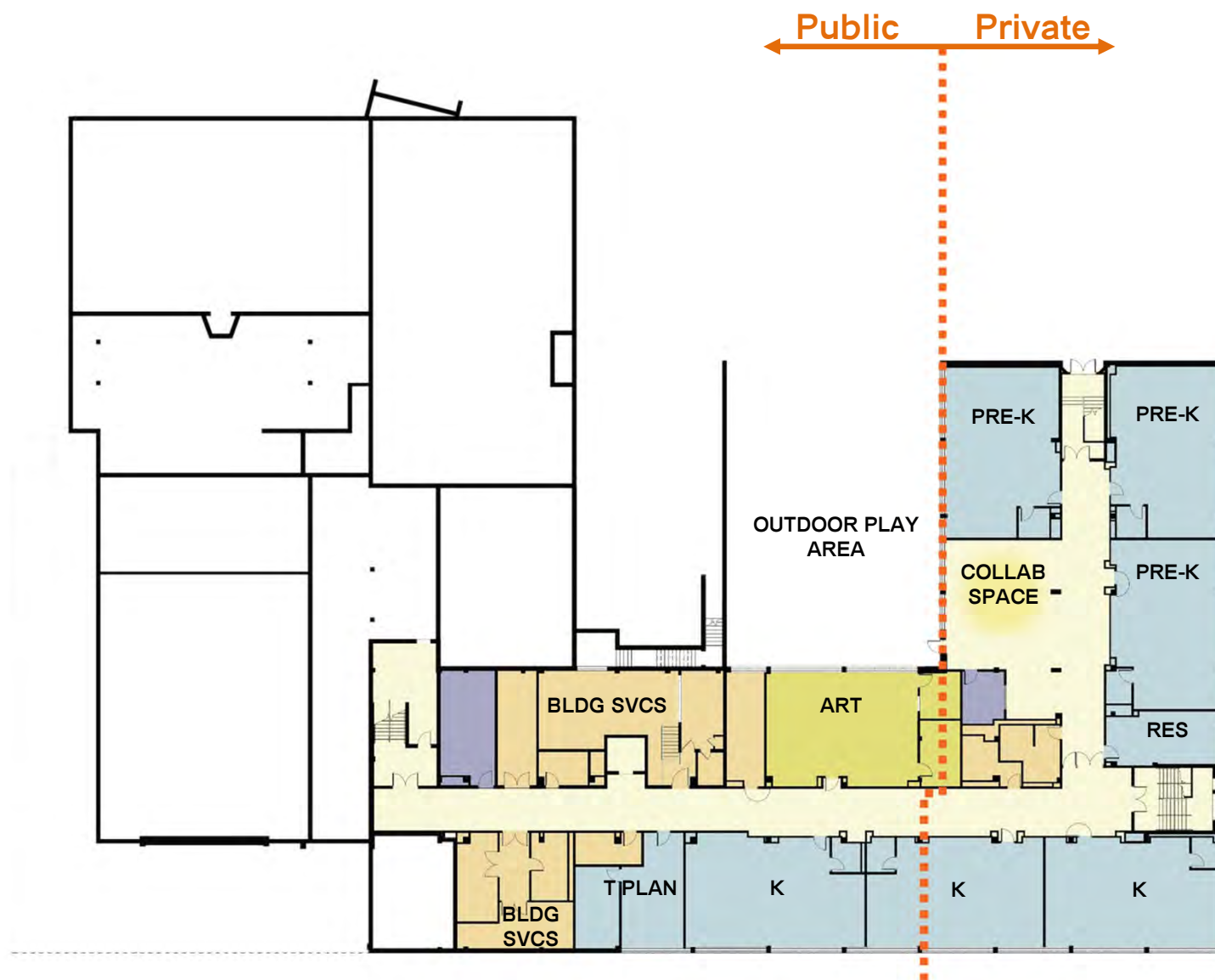
Mary E. Rodman Elementary School

FLOOR PLAN: Proposed First Floor

14



-  ENTRY
-  TEACHING & LEARNING
-  SPECIAL EDUCATION
-  COLLABORATION AREA
-  ADMINISTRATION
-  HEALTH
-  COMMUNITY SPACE
-  MEDIA
-  FINE ARTS
-  FOOD SERVICES
-  PHYSICAL EDUCATION
-  BUILDING SERVICES
-  CIRCULATION



- TEACHING & LEARNING
- SPECIAL EDUCATION
- COLLABORATION AREA
- ADMINISTRATION
- FINE ARTS
- BUILDING SERVICES
- CIRCULATION

Mary E. Rodman Elementary School

FLOOR PLAN: Proposed Second Floor

16



- TEACHING & LEARNING
- SPECIAL EDUCATION
- COLLABORATION AREA
- TECHNOLOGY LAB
- SCIENCE LAB
- ADMINISTRATION
- BUILDING SERVICES
- CIRCULATION



Gate & Fencing

Stair

Flowering Tree

Seat Stair

Tables & Chairs

Pavers

Sloped Walk

Groundcover &
Flowering Shrubs
& Perennials

Sloped Planter

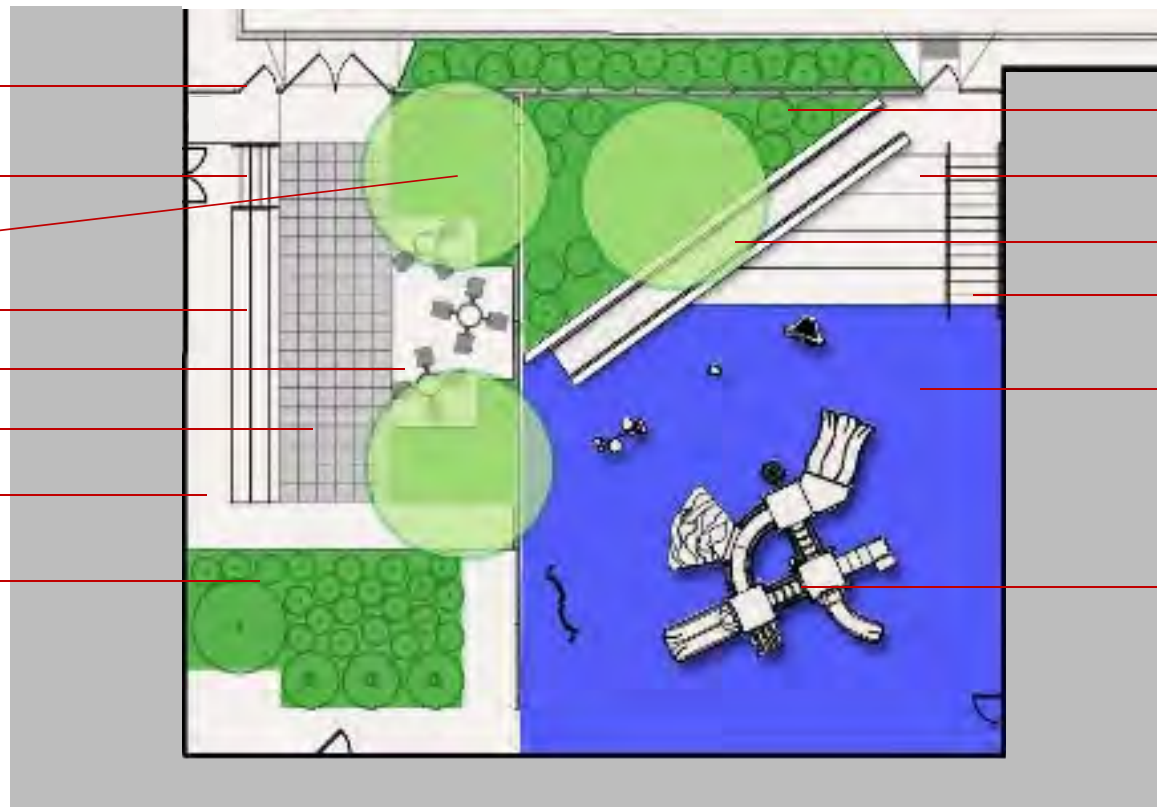
Seat Stair

Ramp

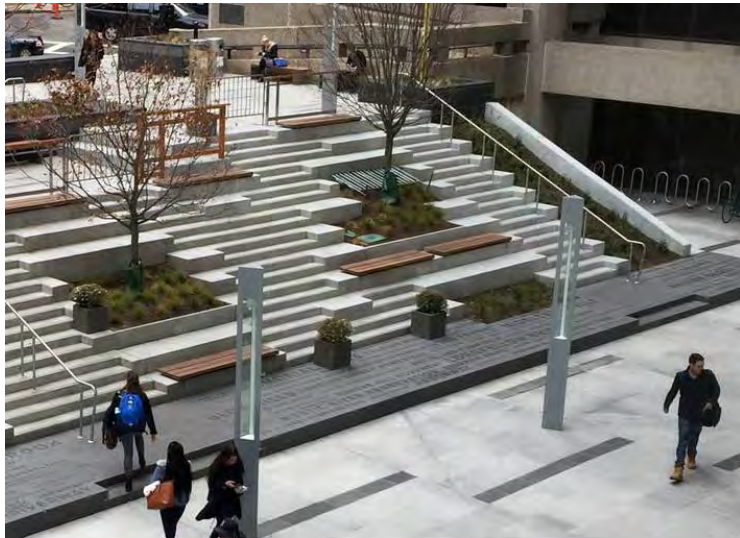
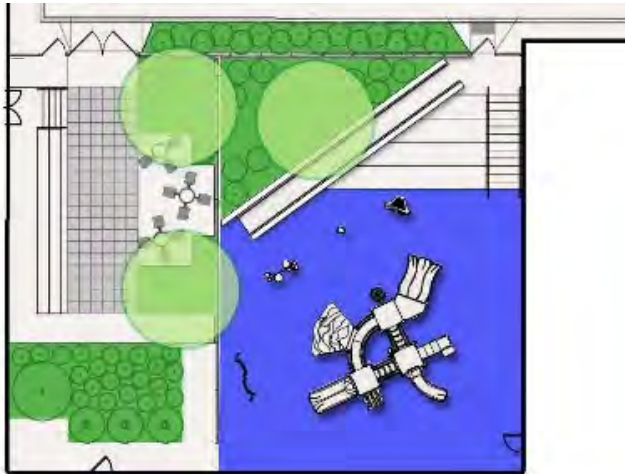
Stair

Play Surfacing

Play Structures



Mary E. Rodman Elementary School

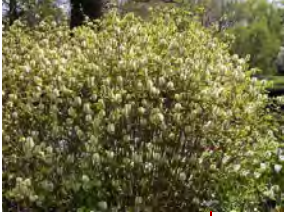


SITE PLAN: Proposed Plant Palette

19



Fothergilla
Mount Airy Fothergilla



Hydrangea quercifolia
Pee Wee Hydrangea



Hosta



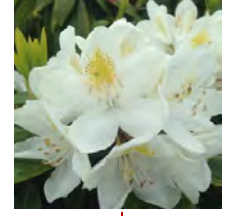
Liriope spicata
Creeping Liriope



Styrax japonicus
Snowbell



Rhododendron PJM
White Angel



Syringa reticulata
Japanese Tree Lilac



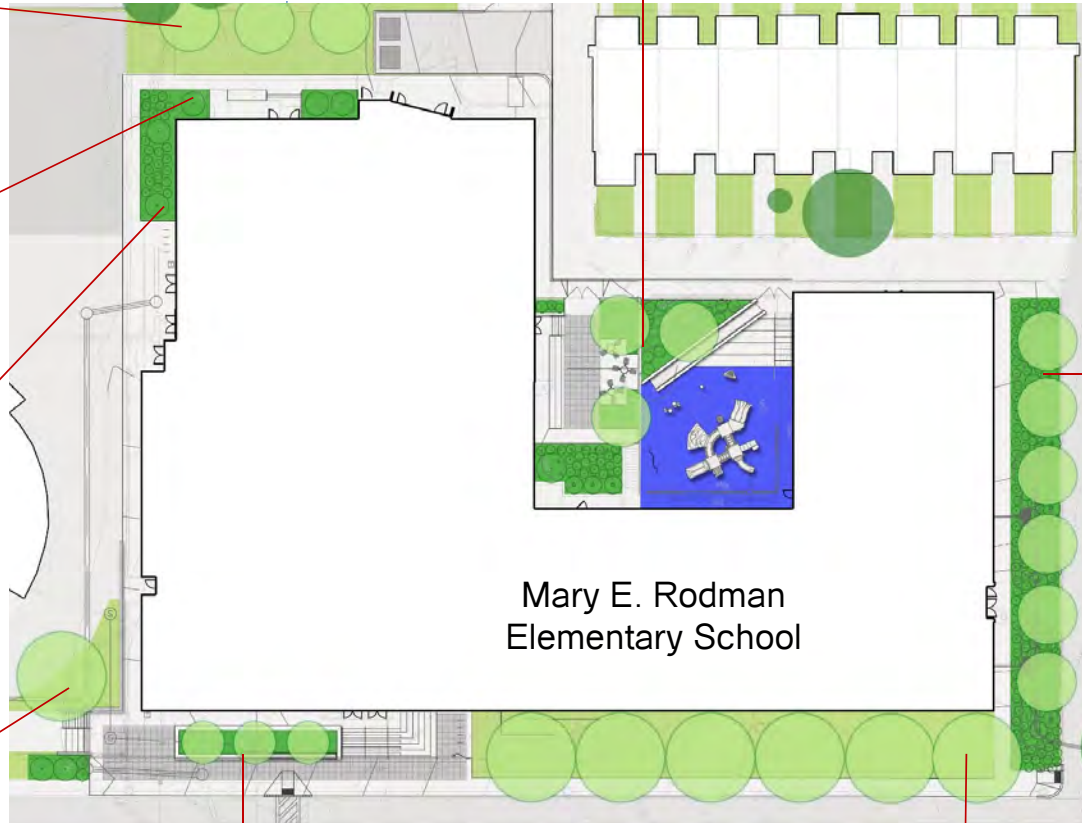
Aesculus parviflora
Bottlebrush Buckeye



Rosa virginiana
Virginia Rose



Fagus grandifolia
American Beech



Mary E. Rodman
Elementary School



Rhododendron periclymenoides
Pinxterbloom Azalea



Vaccinium angustifolium
Lowbush Blueberry



Acer rubrum
Armstrong Maple



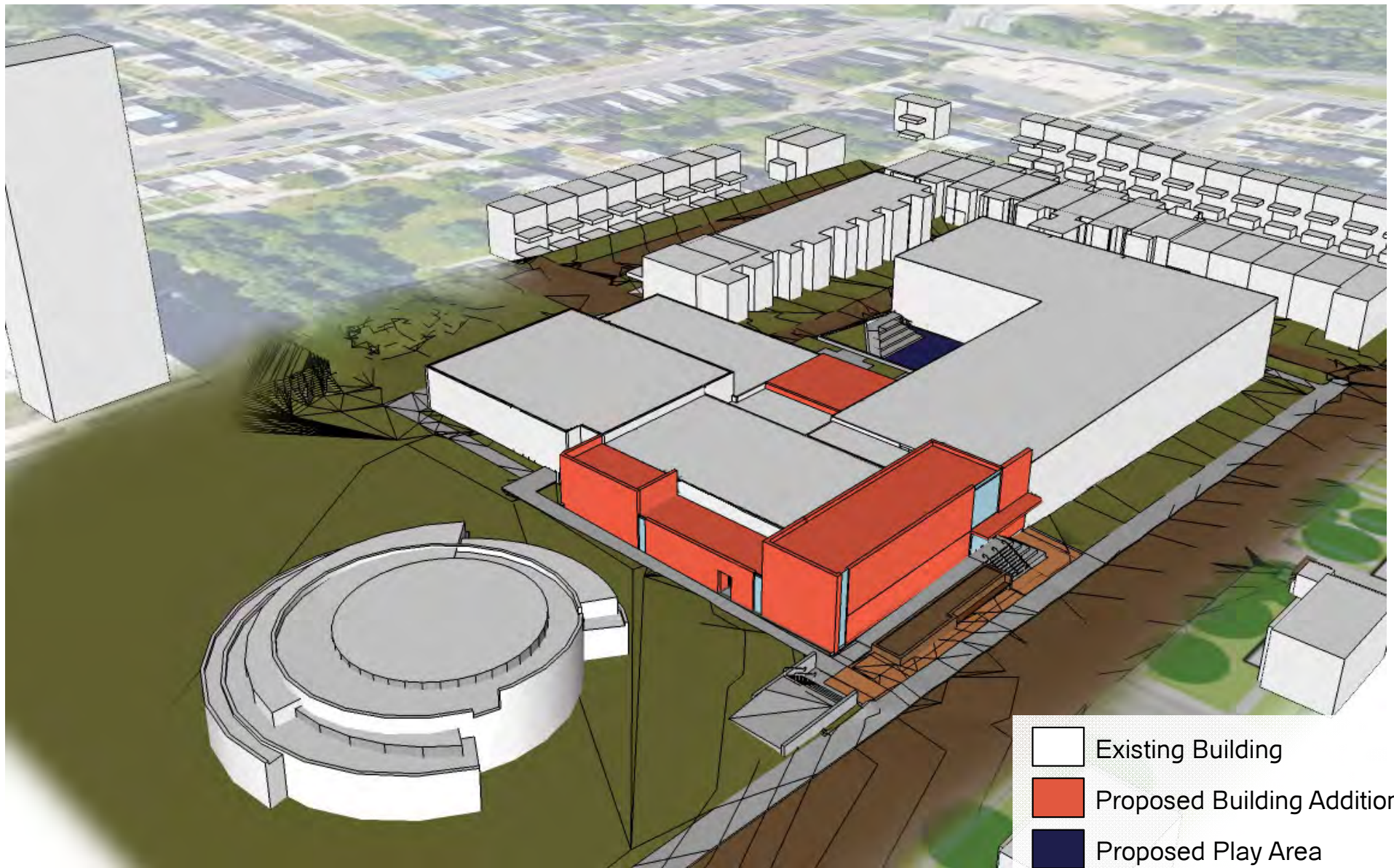
Arctostaphylos uva-ursi
Bearberry

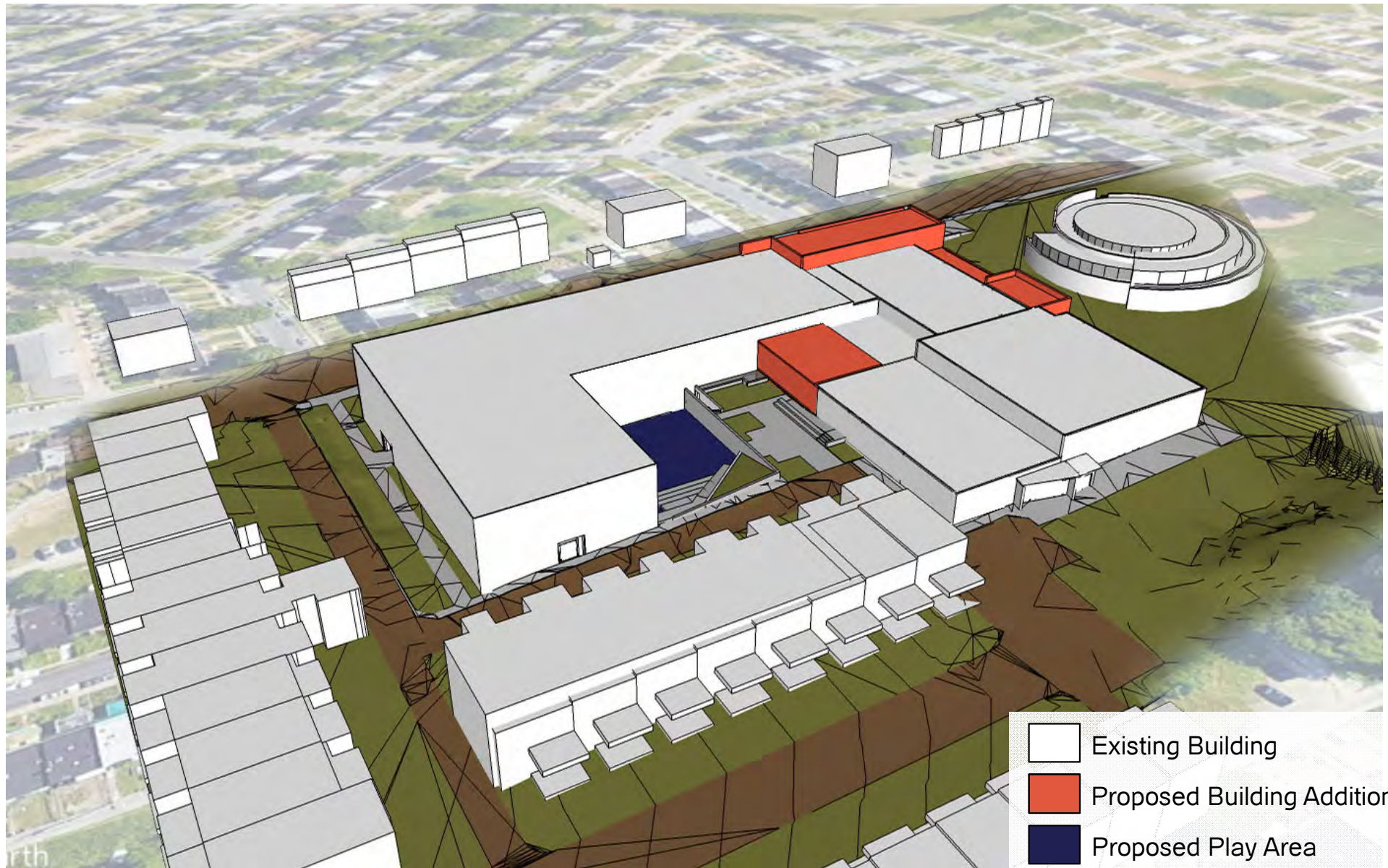


Franklinia alatamaha
Franklinia

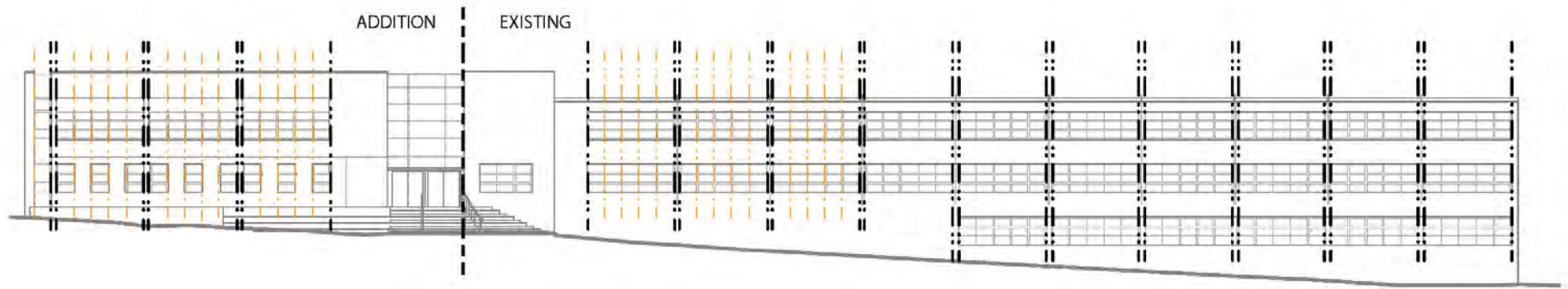


Ulmus americana
Elm











North Elevation



East Elevation



West Elevation



Partial East Elevation





THANK YOU!