



21st Century School Buildings Plan

SCHOOL John Ruhrah Elementary/Middle

COMMUNITY MEETING Schematic Design | February 14, 2018





JOHN RUHRAH
ELEMENTARY / MIDDLE SCHOOL *"The School of Many Nations"*

VISION AND MISSION

- To educate all of our students to be productive, engaged, life-long learners ready to compete in the 21st century global workplace.
- We will build students' intellectual curiosity and knowledge across all disciplines, along with a spirit of cross-cultural sensitivity and civic responsibility....in a safe, supportive, professional and collaborative school environment.

ACADEMIC PLANNING PROCESS

Begins about 9 months prior to the school opening.

- Academic Focus
- School Structures
- Community Traditions

John Ruhrah Summary of Spaces

(8) Pre K and Kindergarten Classrooms	(2) Art rooms
(8) 1 st and 2 nd grade classrooms	(1) Technology Lab
(12) 3 rd , 4 th and 5 th grade classrooms	(1) Foreign language room
(11) 6 th , 7 th , and 8 th grade classrooms	Media Center/ Video Studio
(7) Collaborative learning areas	Cafeteria
(5) Special Education classrooms	Gymnasium
(2) ESOL classrooms	Judy Resource Center
(3) Middle school science classrooms	International Family Center
(1) Elementary school science classroom	Administration / Student Services
(2) Music classrooms	(835) SF Community Space

What we heard...

October

- ✓ **Congestion and traffic flow:** drop off loop and parking
- ✓ **Separation of grades**
- ✓ **Kid-friendly bathrooms:** PK and K in classroom
- ✓ **Safety:** Secure vestibule
- ✓ **Cafeteria**
- ✓ **Judy Center**

LATER IN DESIGN






- Display areas for student work
- Cleanliness
- Safety
- Sharing cultures

INSPIRE and COMMUNITY SCHOOL

- Crosswalks and traffic
- Neighborhood concerns
- After school programming
- Parent engagement and support

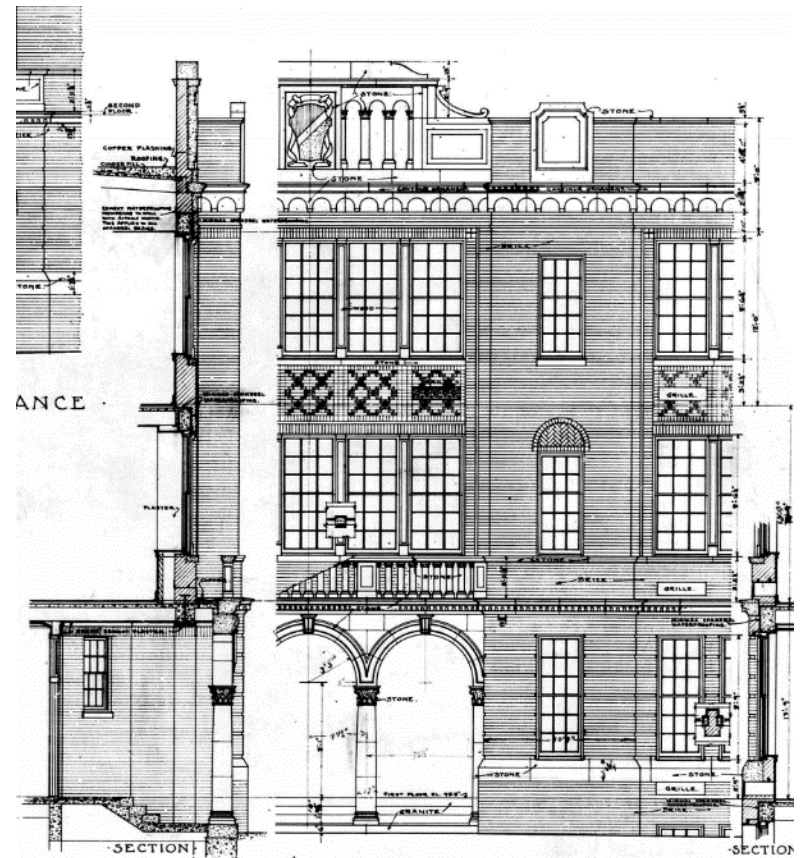


What we heard...

-  Location of learning spaces in the lower level of the school, without access to light, is not acceptable.
-  Traffic calming measures are needed on streets around the school
-  Parent drop-off, as planned, may not alleviate traffic.
-  Can fencing be provided at Tolna street?
-  We're concerned about the number of trees as leaf pick-up is an issue around the community.

PROJECT STATUS

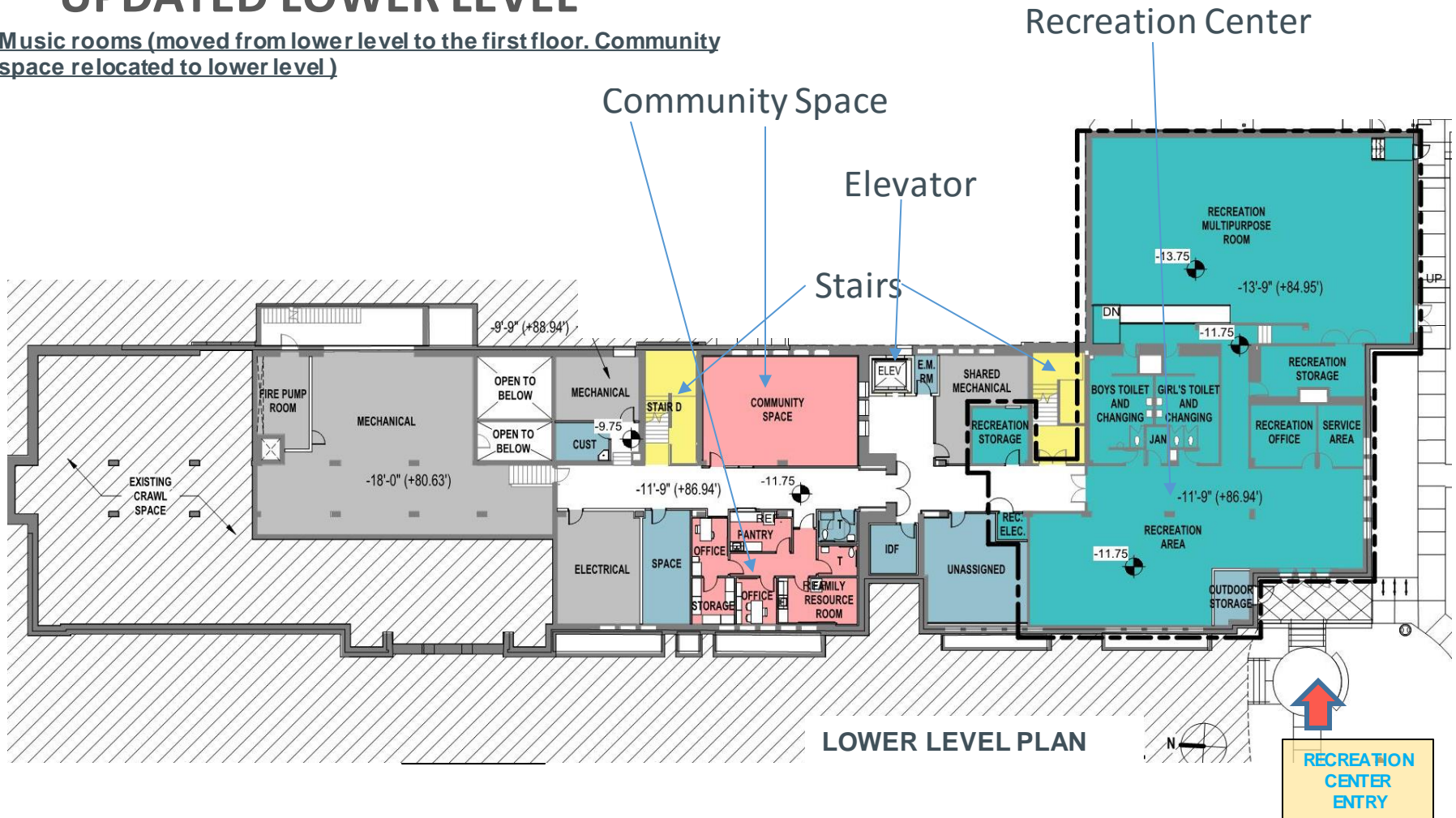
- Presented to the Baltimore City Commission for Historical and Architectural Preservation (CHAP) and obtained approval for Height and Massing.
- Presented to Baltimore City Urban Design & Architecture Review Board.
- Currently working on Design Development Drawings.



Location of learning spaces in the lower level of the school, without access to light, is not acceptable.

UPDATED LOWER LEVEL

Music rooms (moved from lower level to the first floor. Community space relocated to lower level)

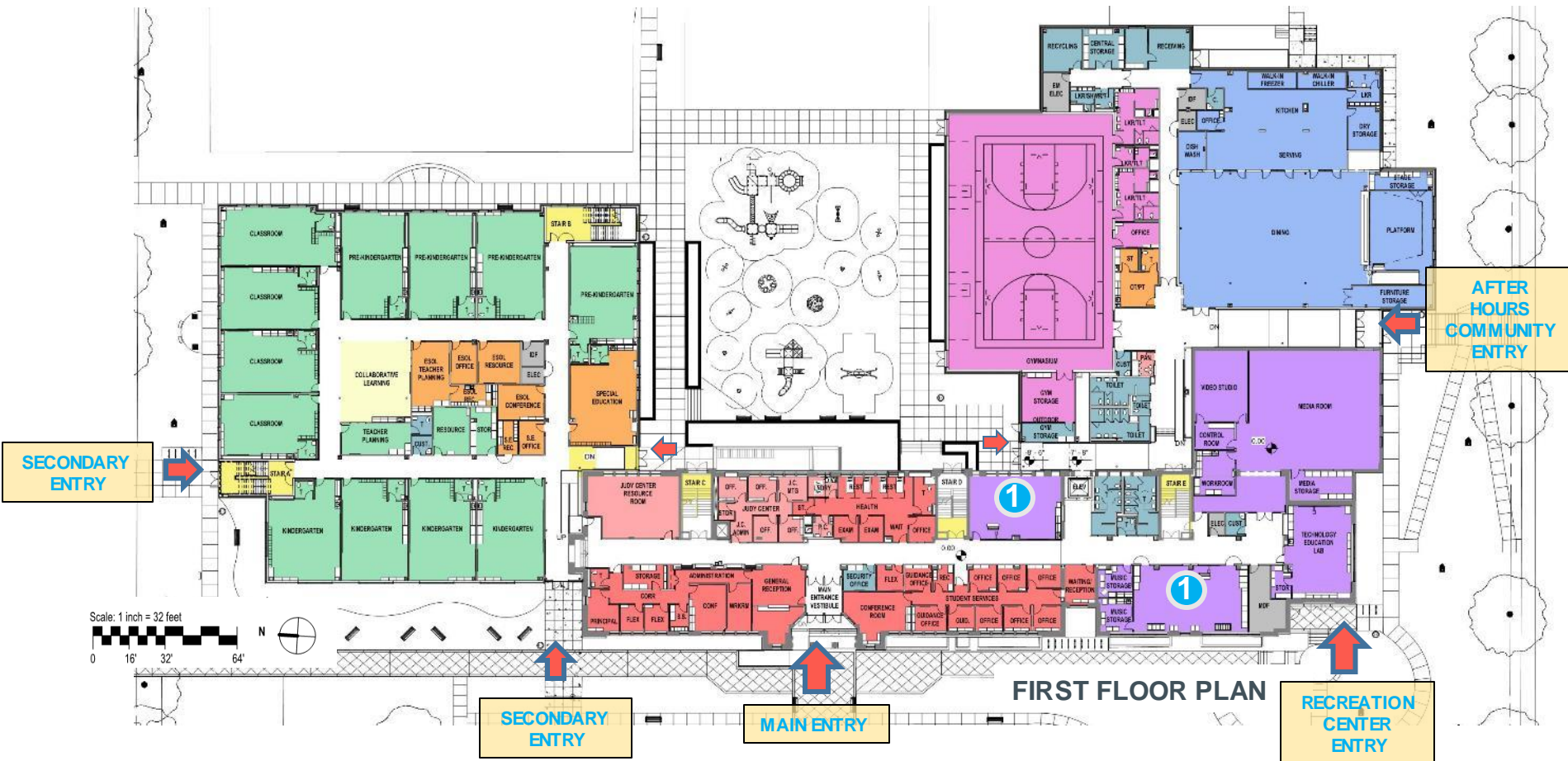




Location of learning spaces in the lower level of the school, without access to light, is not acceptable.

UPDATED FIRST FLOOR

Music rooms (moved from the ground floor to the first floor.)
Community space relocated to ground floor

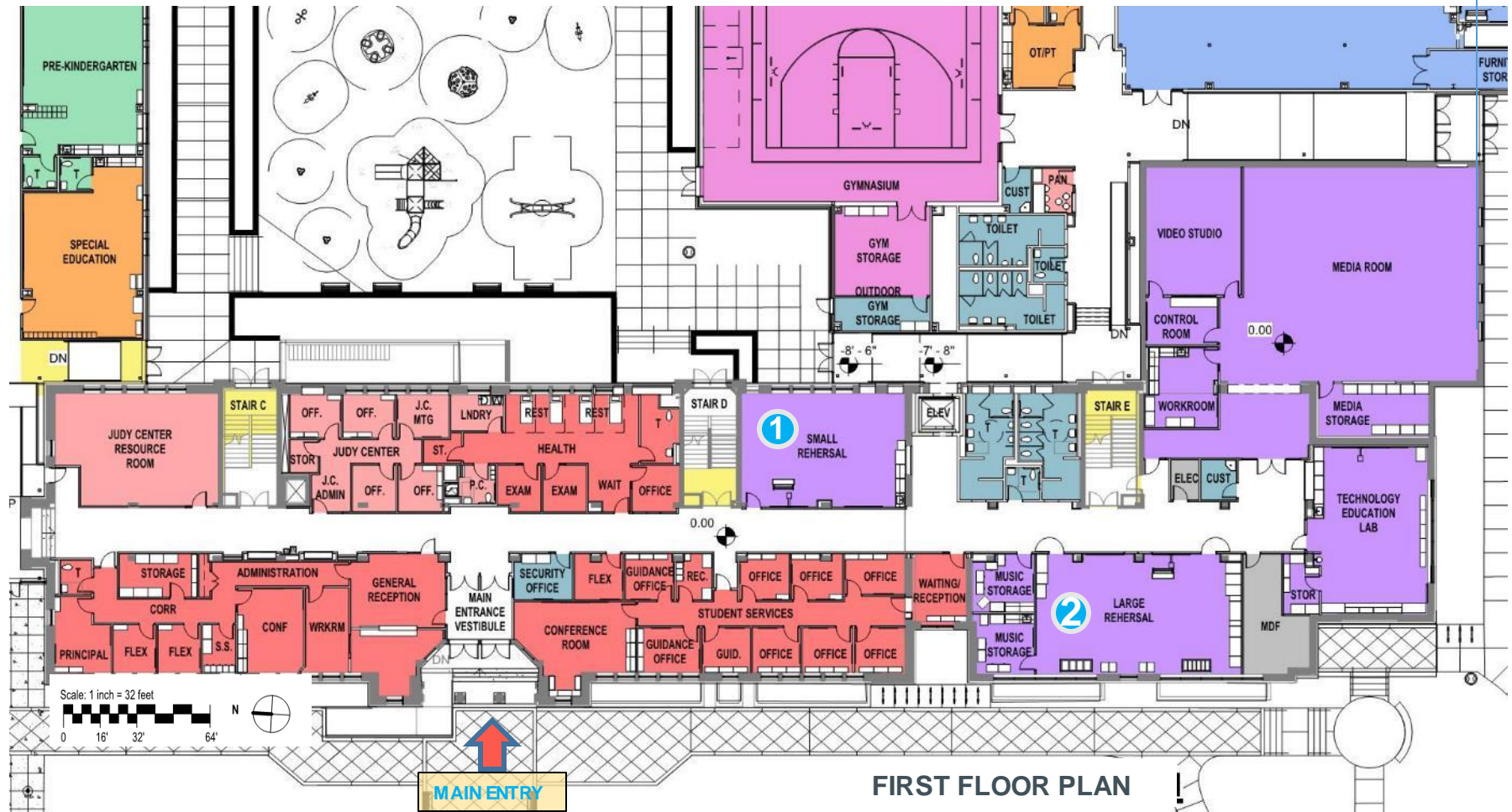




Location of learning spaces in the lower level of the school, without access to light, is not acceptable.

① Small Rehearsal Music Room

② Large Rehearsal Music Room



UPDATED SECOND FLOOR

Reconfigured Collaborative Learning Areas



SECOND FLOOR PLAN

UPDATED: THIRD FLOOR

Science labs moved to be with other Grade 6 classrooms

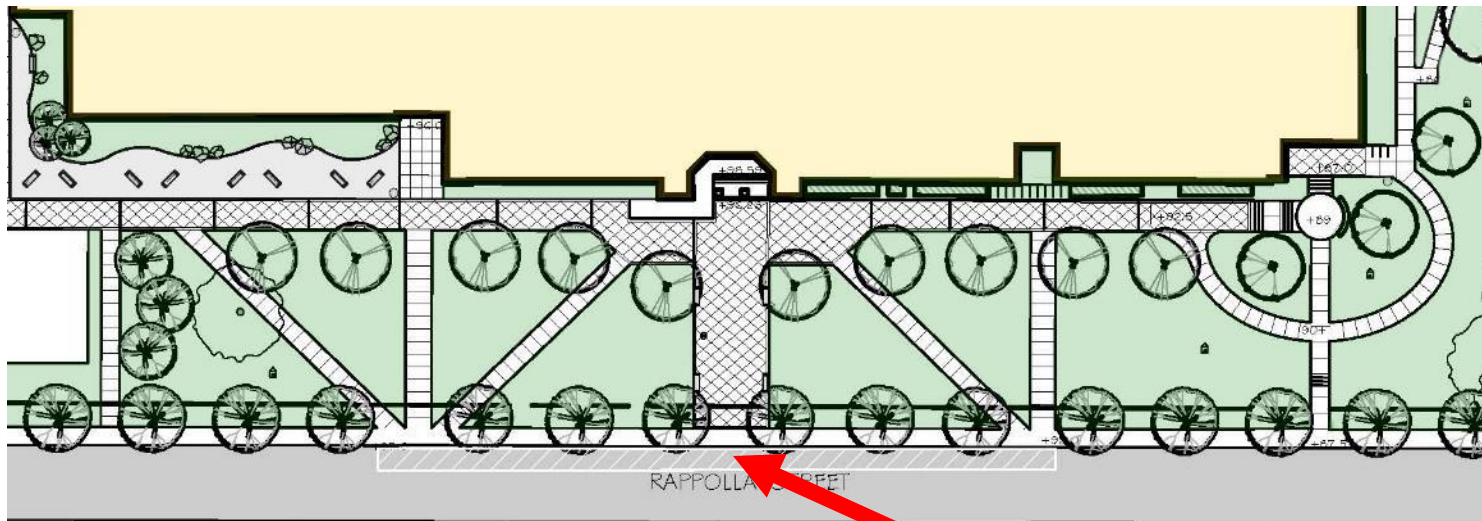


THIRD FLOOR PLAN



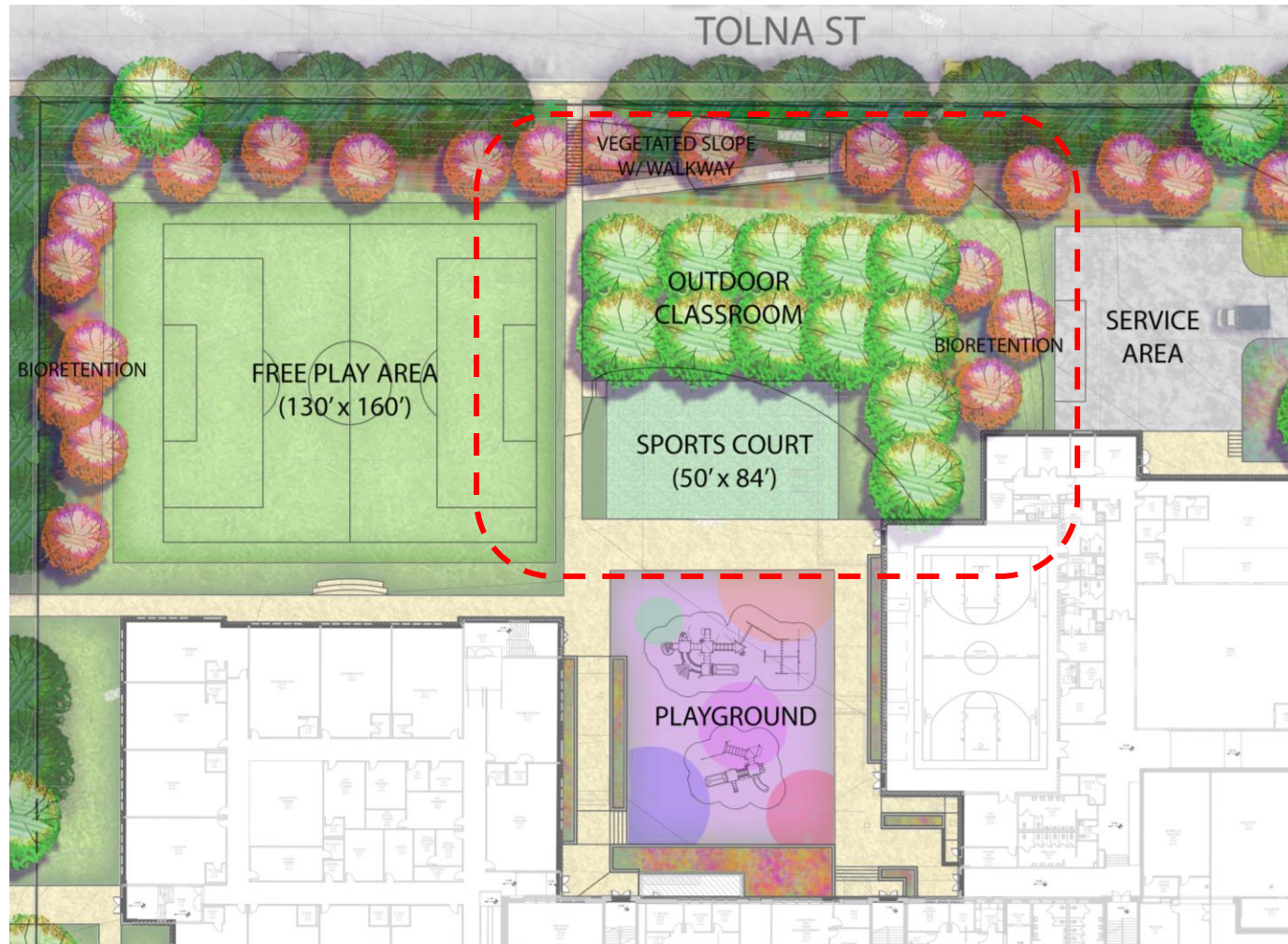


SITE REVIEW: RAPPOLLA STREET FRONT

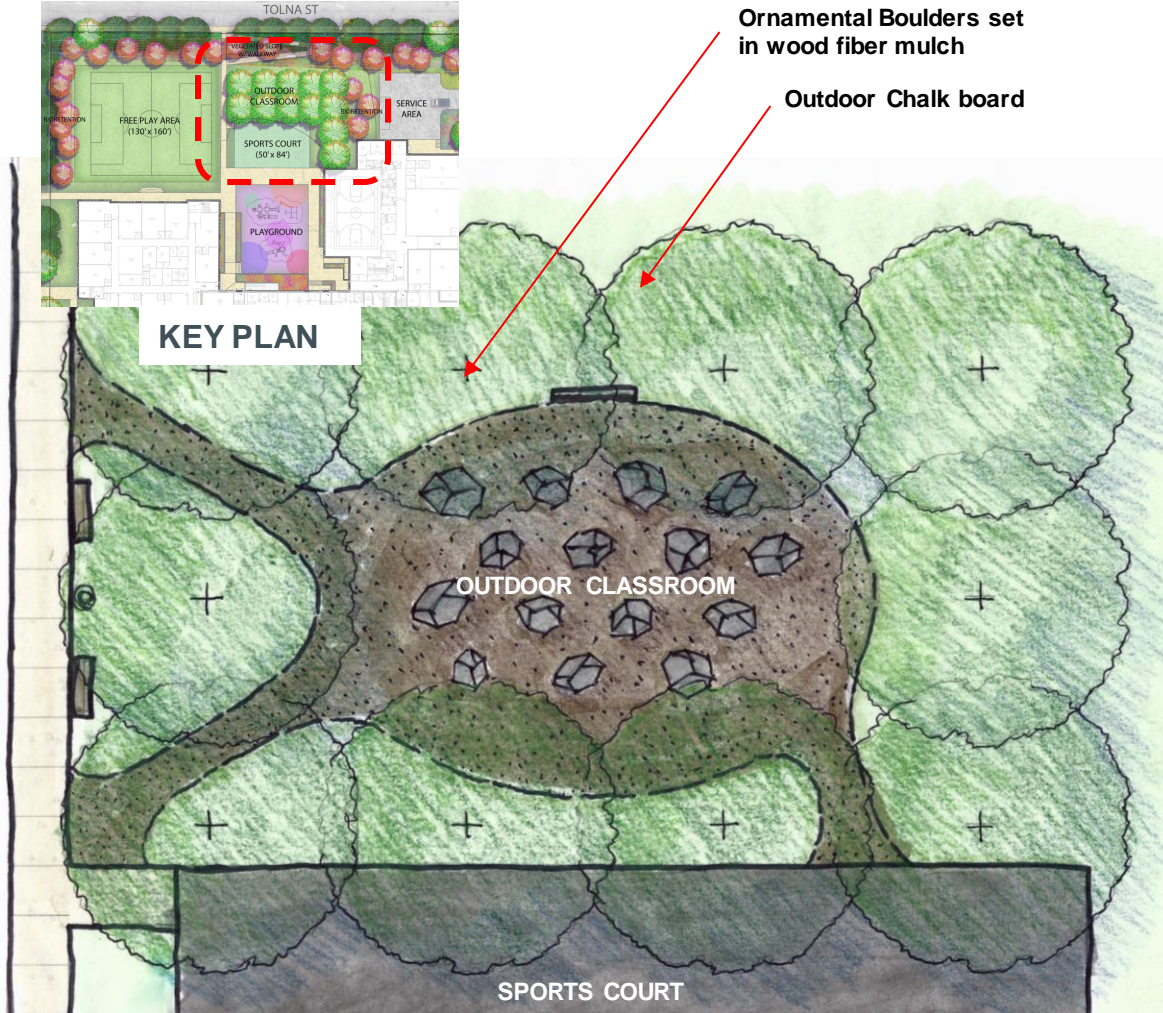


Drop off lane no parking during pickup and drop off times

SITE REVIEW: OUTDOOR LEARNING



SITE REVIEW: OUTDOOR LEARNING



OUTDOOR CLASSROOM



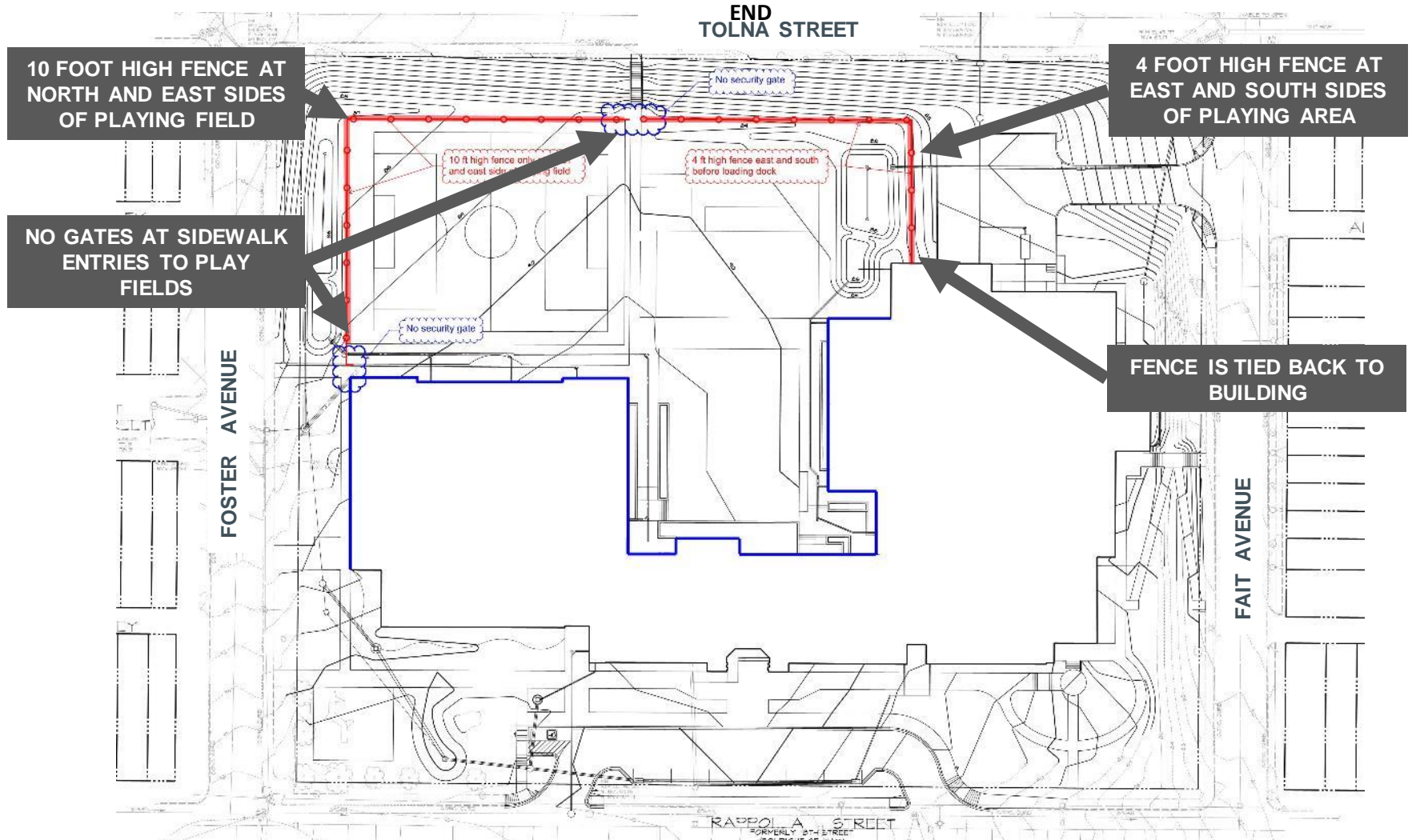
ACCESSIBLE SURFACE



ENGINEERED WOOD FIBER MULCH



SITE REVIEW: FENCING PLAN | OPTION 2: 10 FT FENCE AT PLAYING FIELD AND 4 FT AT EAST & SOUTH





Traffic calming measures are needed on streets around the school.



Questions?

CONTACTS

Nicole Price

Communications Coordinator
21st Century School Buildings Program

nprice@bcps.k12.md.us

(443) 642-4600

Karen Summerville

Communications Coordinator
21st Century School Buildings Program

ksummerville@bcps.k12.md.us

(443) 642-4600



WEBSITE

baltimore21stcenturyschools.org



FACEBOOK

@21stCenturySchoolBuildingsProgram



TWITTER

@21stCSBaltimore

Thank You!



This presentation is brought to you by the
21st Century School Buildings Program.

www.baltimore21stcenturyschools.org

21st Century School Buildings Program

Baltimore City Public Schools
200 East North Avenue Room 407-B
Baltimore MD 21202
(443) 642-4600

Cheri Vincent

Interim Executive Director, 21st Century Buildings Program
Baltimore City Public Schools

Gary McGuigan

Senior Vice President, Capital Development Division
Maryland Stadium Authority

James T. Smith, Jr.

Chief of Strategic Alliances
City of Baltimore

Robert Gorrell

Executive Director, Public School Construction Program
State of Maryland

BALTIMORE CITY
PUBLIC SCHOOLS

