



21st Century School Buildings Plan

SCHOOL John Ruhrah Elementary/Middle

COMMUNITY MEETING Concept Design | October 4, 2017



Introductions

Emily Sherman

Transition Support Coordinator
21st Century School Building Program
City Schools

Michael McBride

Design Director
21st Century School Building Program
City Schools

Dawn Sanders

John Ruhrah Project Manager
Maryland Stadium Authority

Paul Bradshaw

Principal
Grimm + Parker Architects

Agenda

- 21st Century School Buildings Program
- School Size and Program Requirements
- Academic Planning Process
- Existing Conditions
- Design Studies
- Site Design
- Floor Plans
- Exterior Views and Landscape
- Feedback

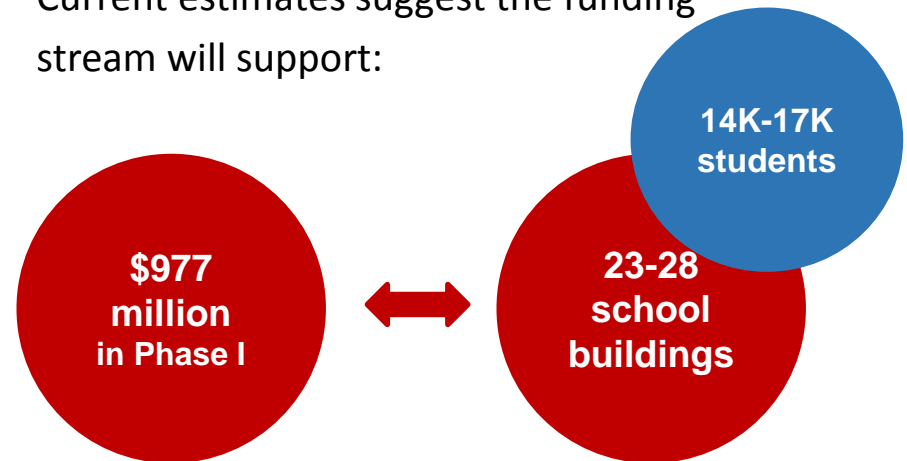
21st Century School Buildings Program Update

The Baltimore City Public School System (City Schools) Construction and Revitalization Act of 2013 resulted in a partnership between:

- The State of Maryland
- Baltimore City
- City Schools

Each contribute \$20 million annually towards the plan.

Current estimates suggest the funding stream will support:



City Schools' Plan is one of the largest public works project in Baltimore City to date.

School Program

(8) Pre K and Kindergarten Classrooms	(2) Art rooms
(8) 1 st and 2 nd grade classrooms	(1) Technology Lab
(12) 3 rd , 4 th and 5 th grade classrooms	(1) Foreign language room
(11) 6 th , 7 th , and 8 th grade classrooms	Media Center/ Video Studio
(7) Collaborative learning areas	Cafeteria
(5) Special Education classrooms	Gymnasium
(2) ESOL classrooms	Judy Resource Center
(3) Middle school science classrooms	International Family Center
(1) Elementary school science classroom	Administration / Student Services
(2) Music classrooms	(835) SF Community Space



JOHN RUHRAH

ELEMENTARY / MIDDLE SCHOOL *"The School of Many Nations"*

VISION AND MISSION

- To educate all of our students to be productive, engaged, life-long learners ready to compete in the 21st century global workplace.
- We will build students' intellectual curiosity and knowledge across all disciplines, along with a spirit of cross-cultural sensitivity and civic responsibility....in a safe, supportive, professional and collaborative school environment.

ACADEMIC PLANNING PROCESS

Begins about 9 months prior to the school opening.

- Academic Focus
- School Structures
- Community Traditions

Focus Group Feedback

TONIGHT

- ✓ **Congestion and traffic flow:** drop off loop and parking
- ✓ **Separation of grades**
- ✓ **Kid-friendly bathrooms:** PK and K in classroom
- ✓ **Safety:** Secure vestibule
- ✓ **Cafeteria**
- ✓ **Judy Center**

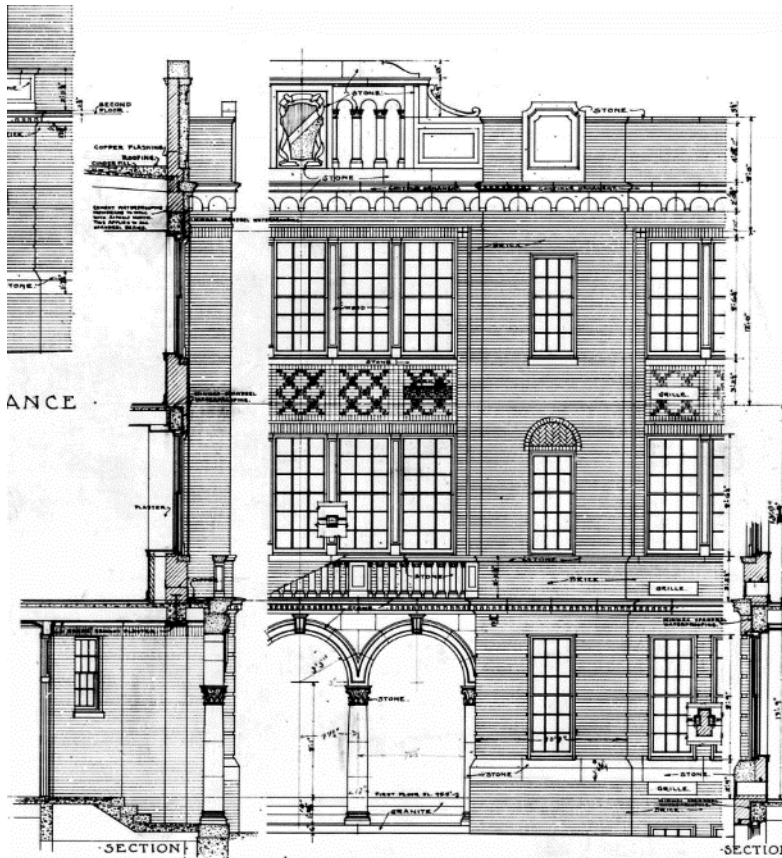
LATER IN DESIGN

- Display areas for student work
- Cleanliness
- Safety
- Sharing cultures

INSPIRE and COMMUNITY SCHOOL

- Crosswalks and traffic
- Neighborhood concerns
- After school programming
- Parent engagement and support

Program Area

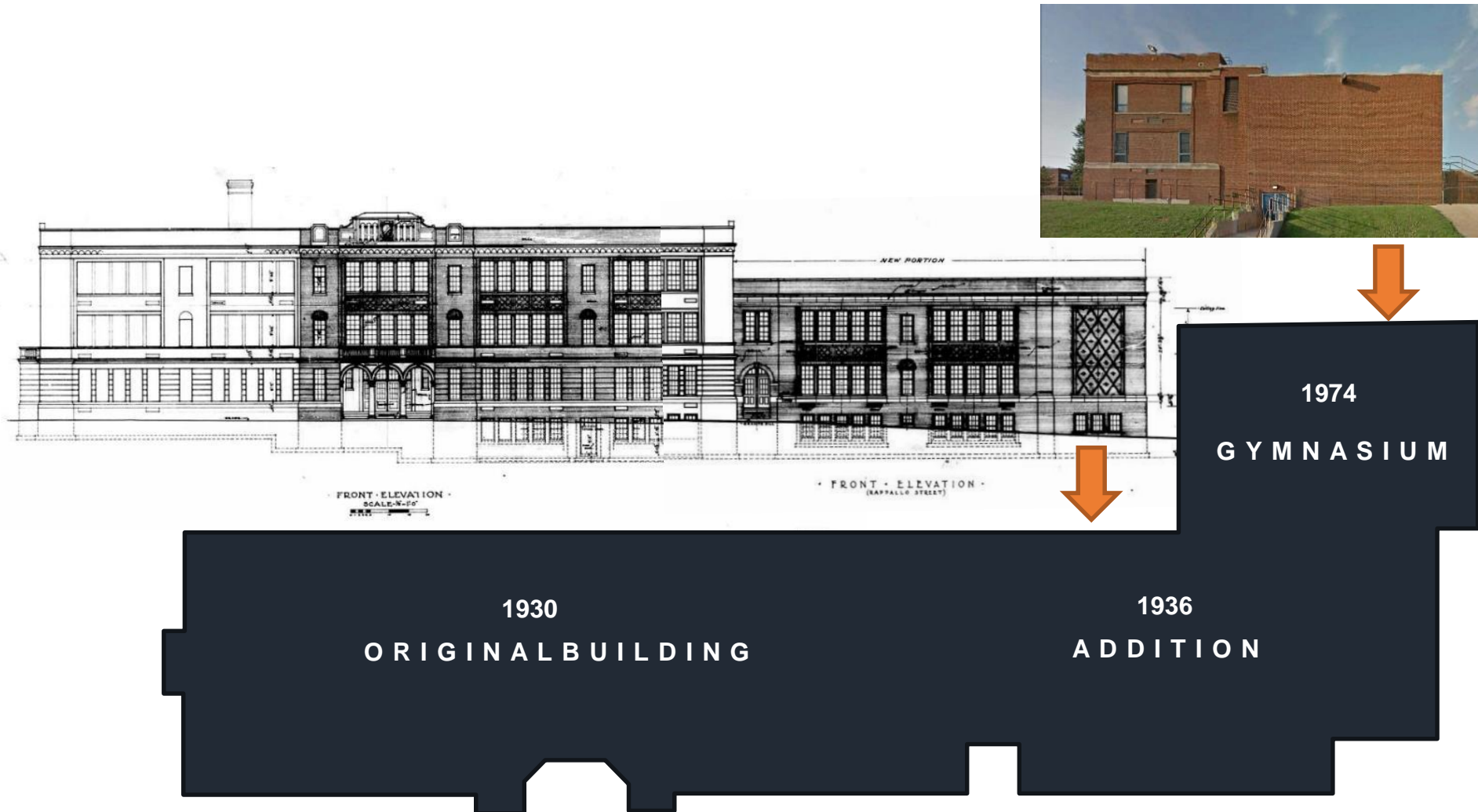


Original Architectural Drawing

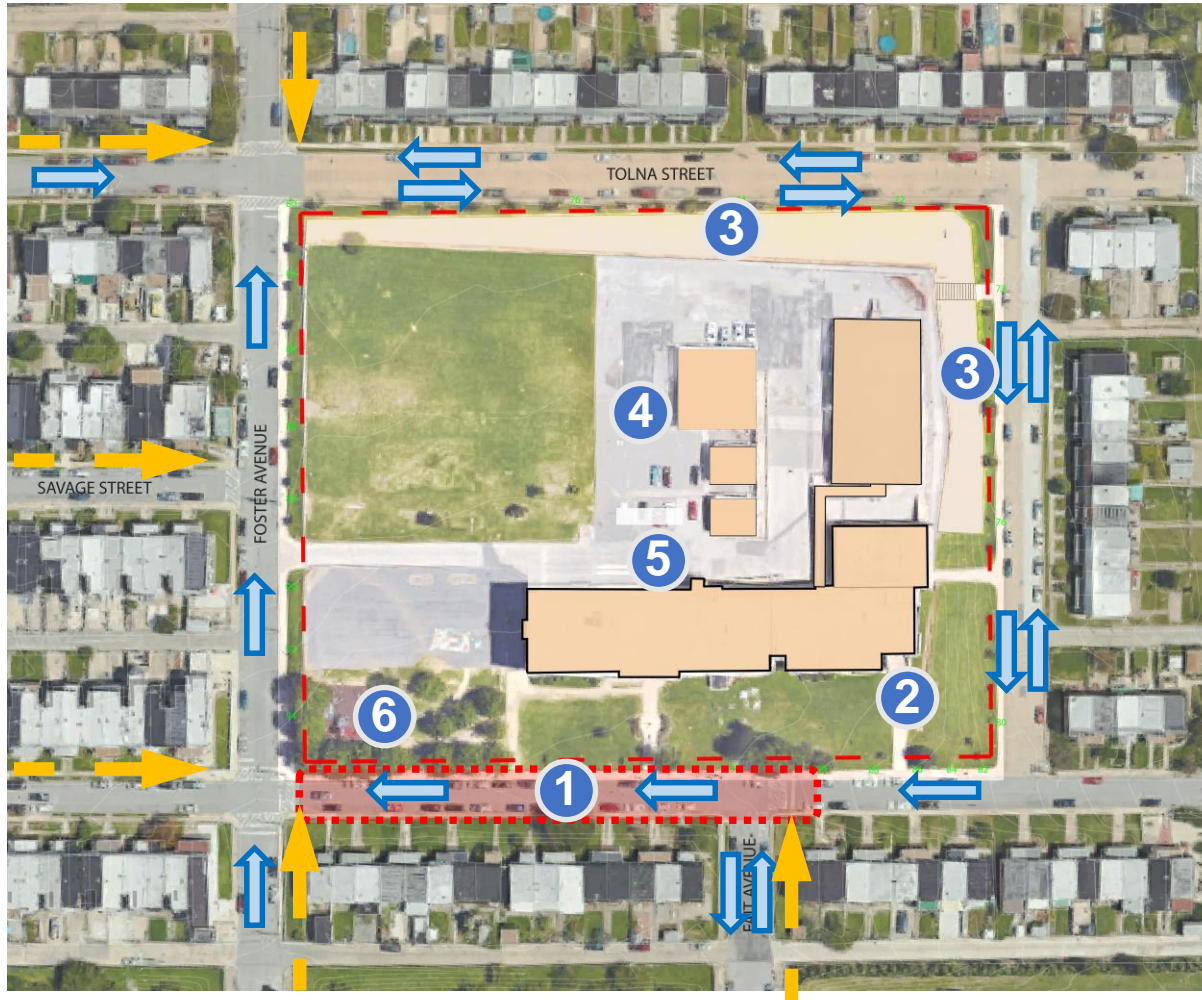
SF = square footage

Existing Building (including the rec center)	60,309 SF
Existing Building (excluding the rec center)	53,132 SF
NEW School Building (excluding the rec center) <i>In accordance with the Educational Specifications</i>	135,000 SF

Original 1930 Building + 1936 Addition + 1974 Addition



Traffic Patterns



- 1 Severe traffic congestion at drop-off area along Rappolla Street
- 2 Recreation Center entry not ADA compliant
- 3 Steep slope of concrete embankment with no landscaping
- 4 Large Impervious Surface at Modular Classrooms
- 5 Service / Loading remote from adjacent street
No pedestrian access

- 6 Existing Playground

← One-Way Traffic

↔ Two-Way Traffic

→ Major Pedestrian Approach

Major Congested Area

Design Concept Options

Option A



Option B



Option C

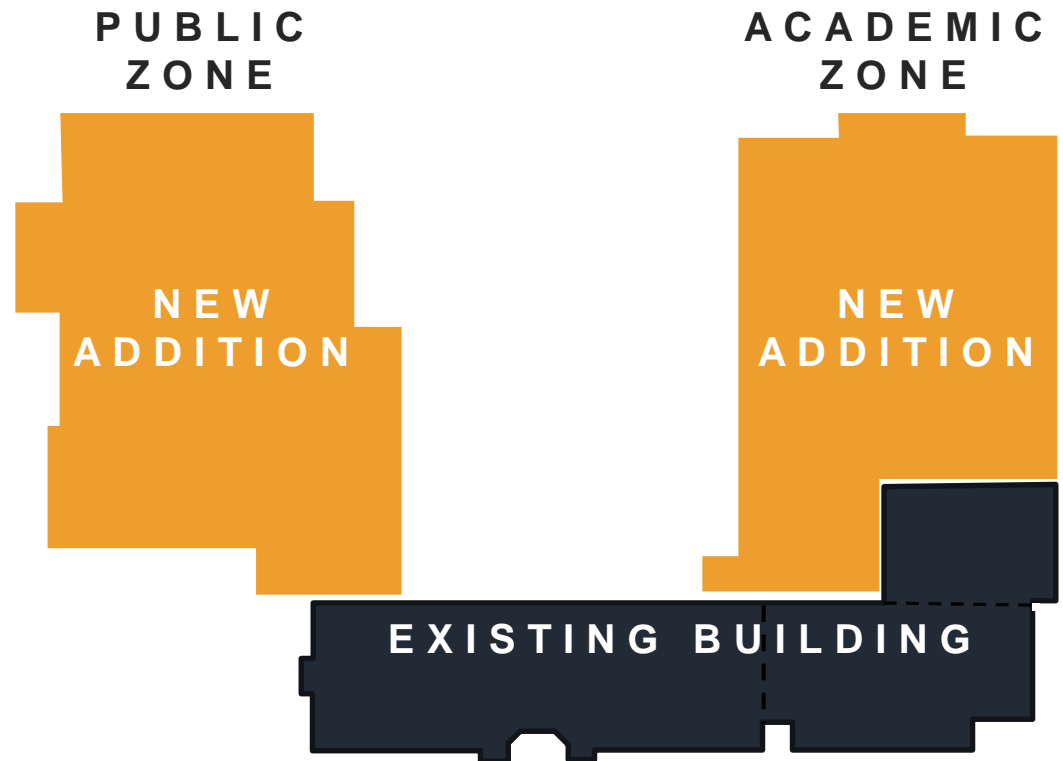


Option D

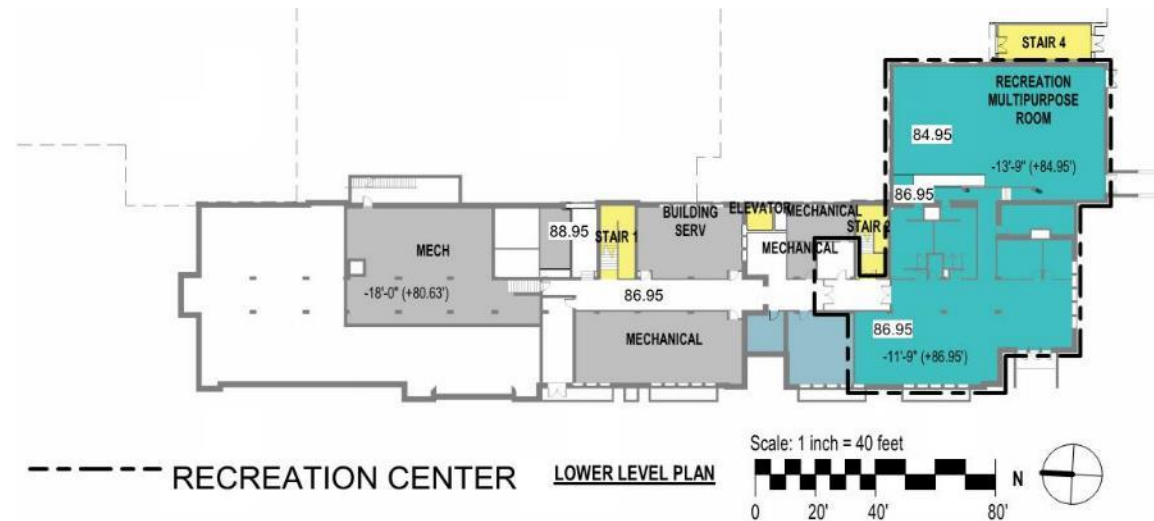


Building Organization

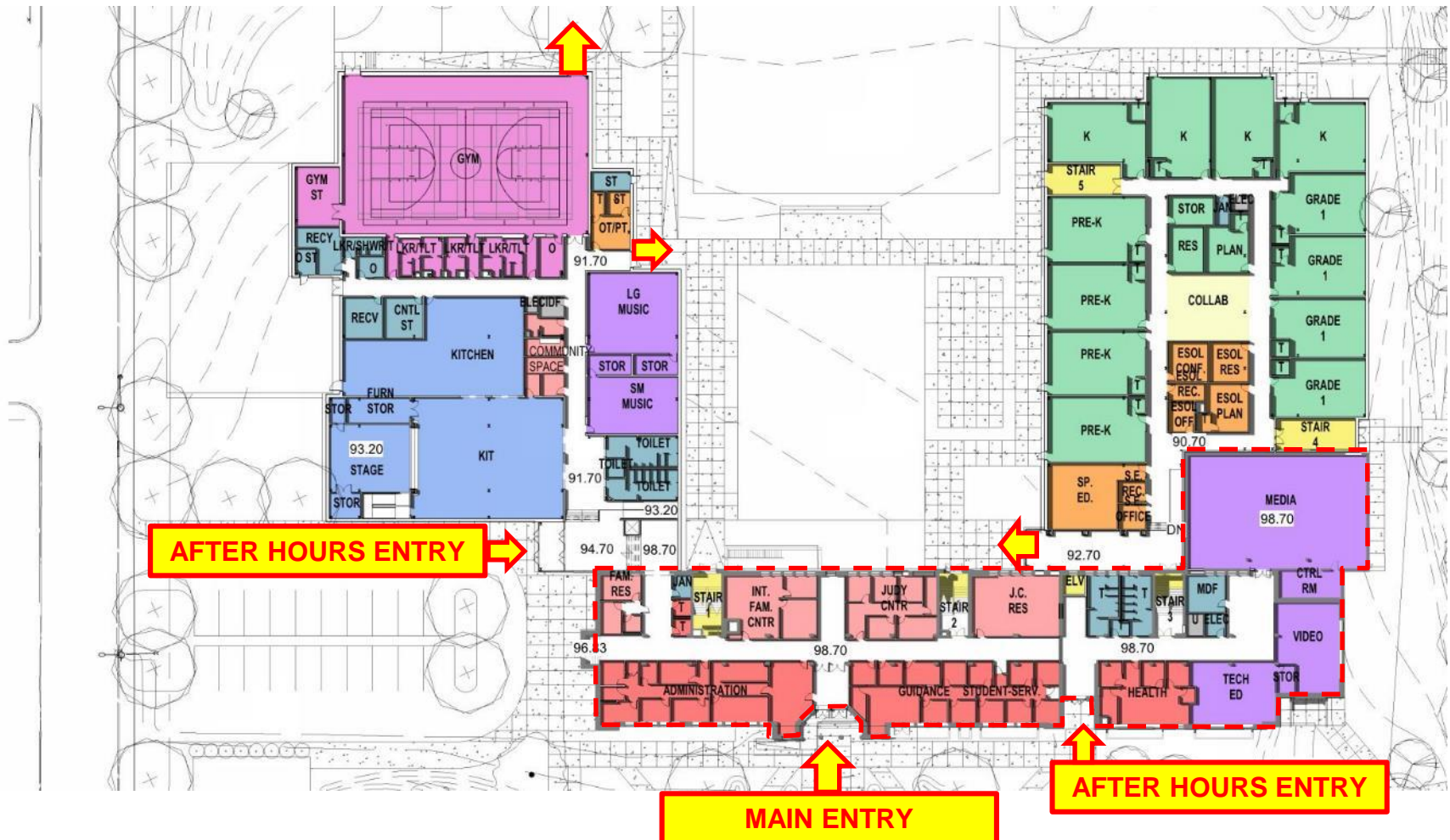
- Retain 1930, 1936 and 1974 structures
- Repurpose existing gymnasium
- New additions for classrooms and gymnasium spaces directly connected to historic building
- Separate the building into Public and Academic zones to allow for secure control of building after hours
- Maintain administrative functions in the existing building



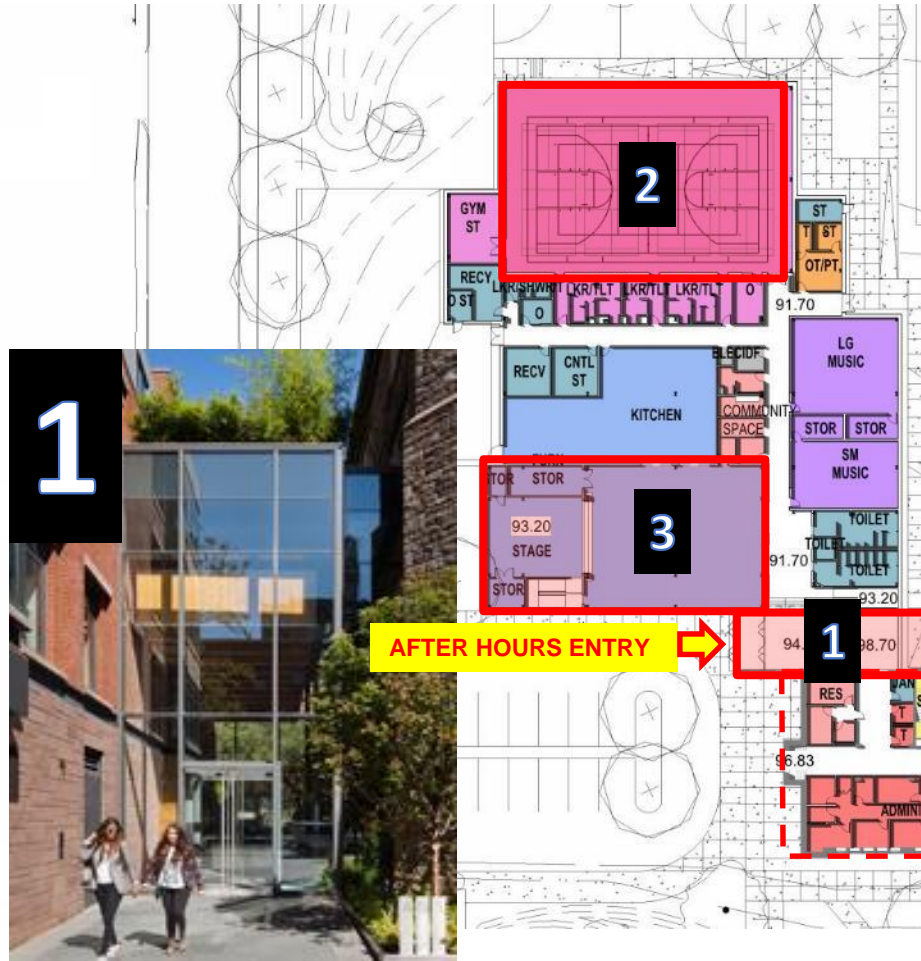
Lower Level Floor Plan



First Level Floor Plan



First Level Floor Plan



Second Level Floor Plan

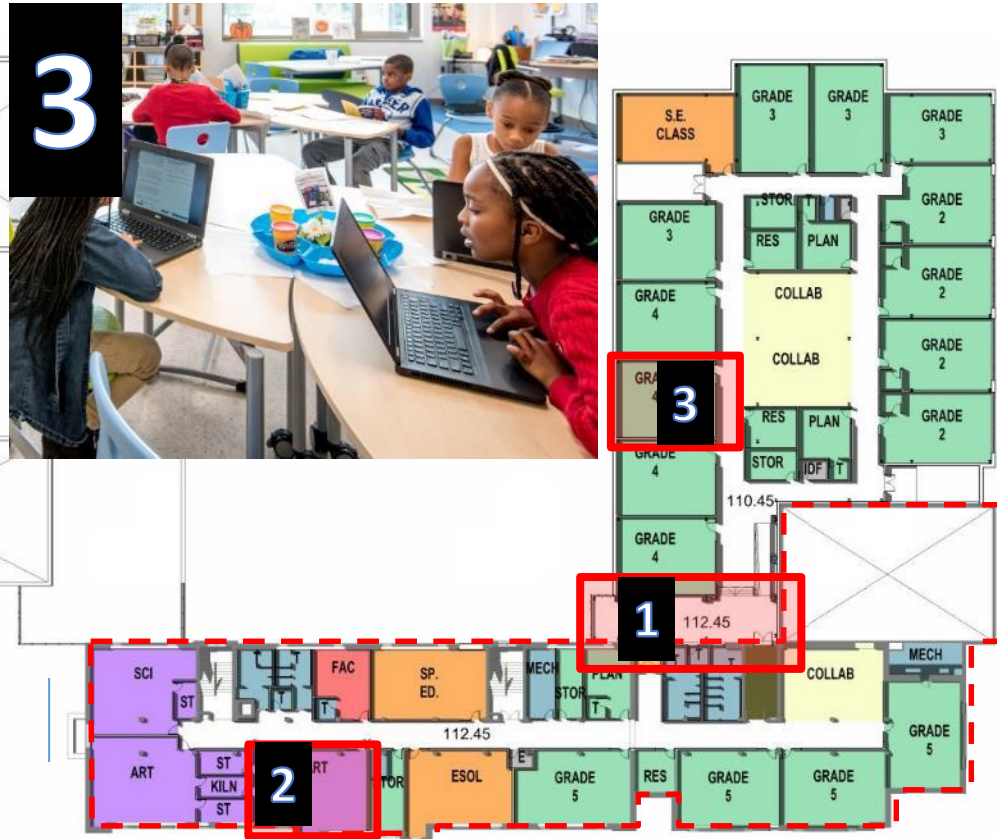
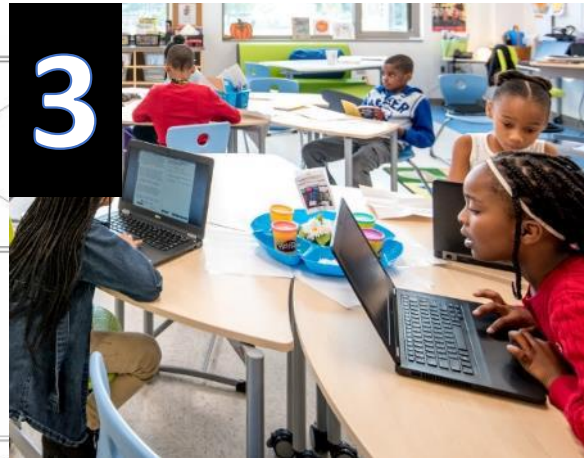


SECOND FLOOR PLAN

Scale: 1 inch = 40 feet



Second Level Floor Plan



SECOND FLOOR PLAN

Scale: 1 inch = 40 feet

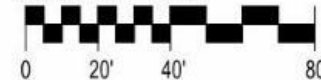


Third Level Floor Plan



THIRD FLOOR PLAN

Scale: 1 inch = 40 feet



Third Level Floor Plan

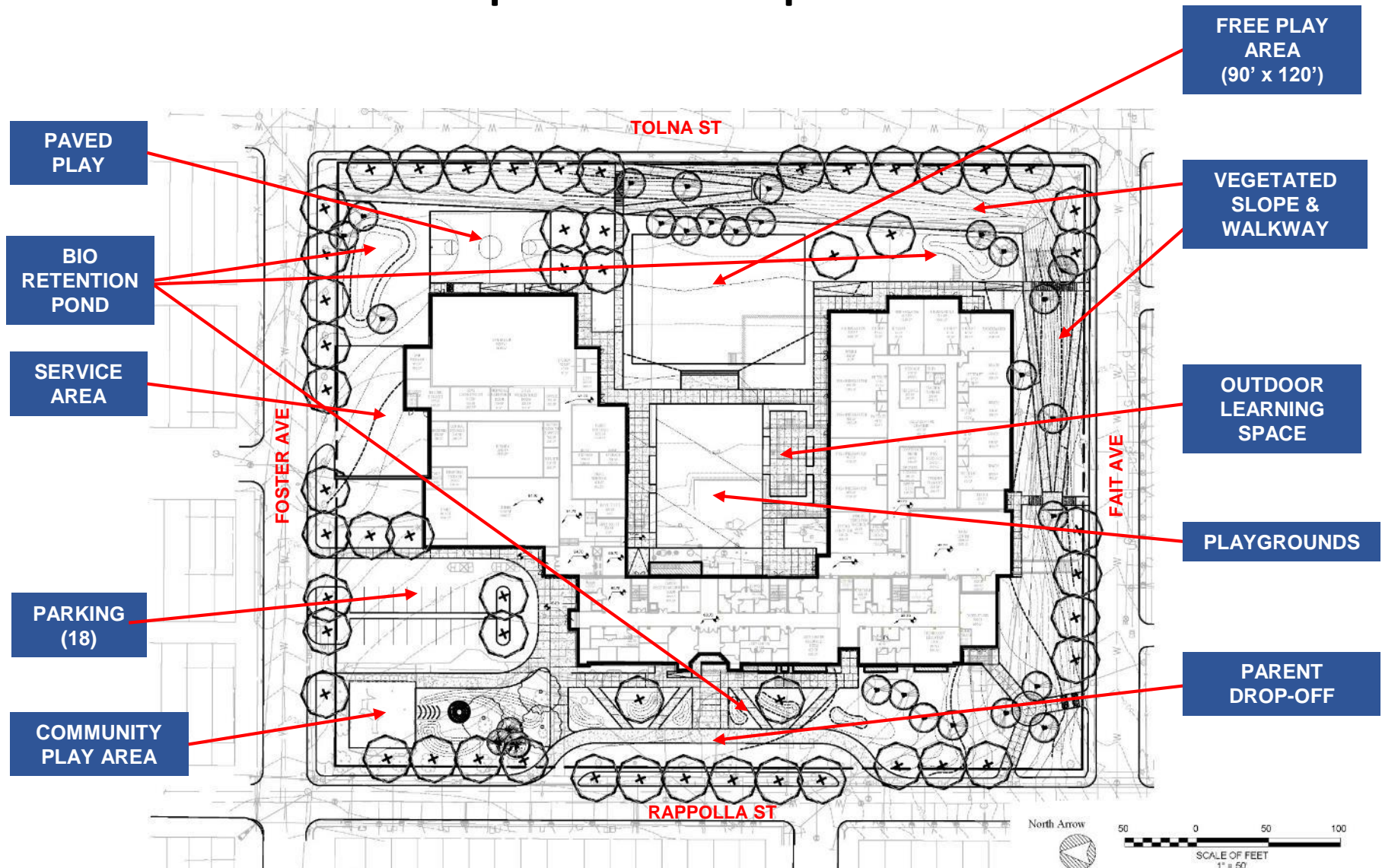


THIRD FLOOR PLAN

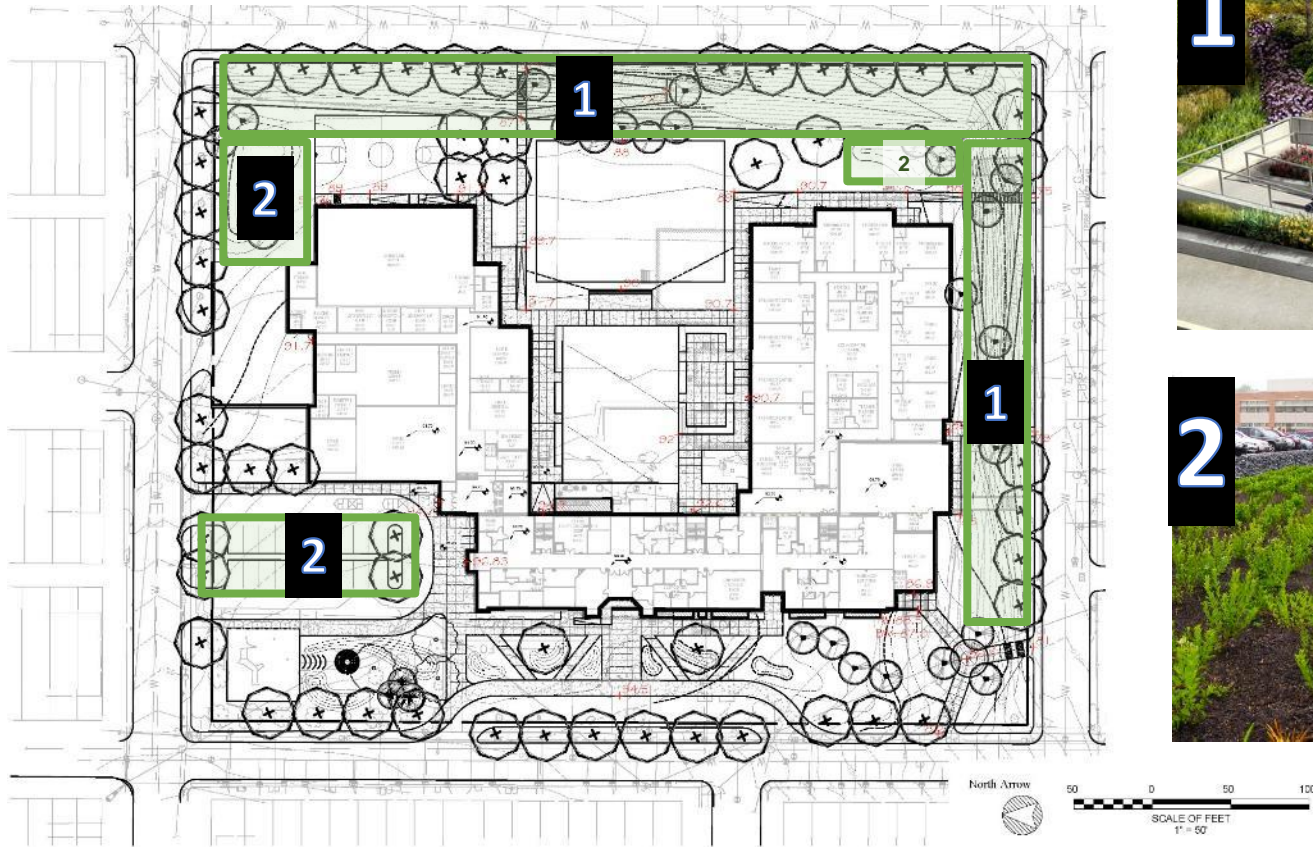
Scale: 1 inch = 40 feet



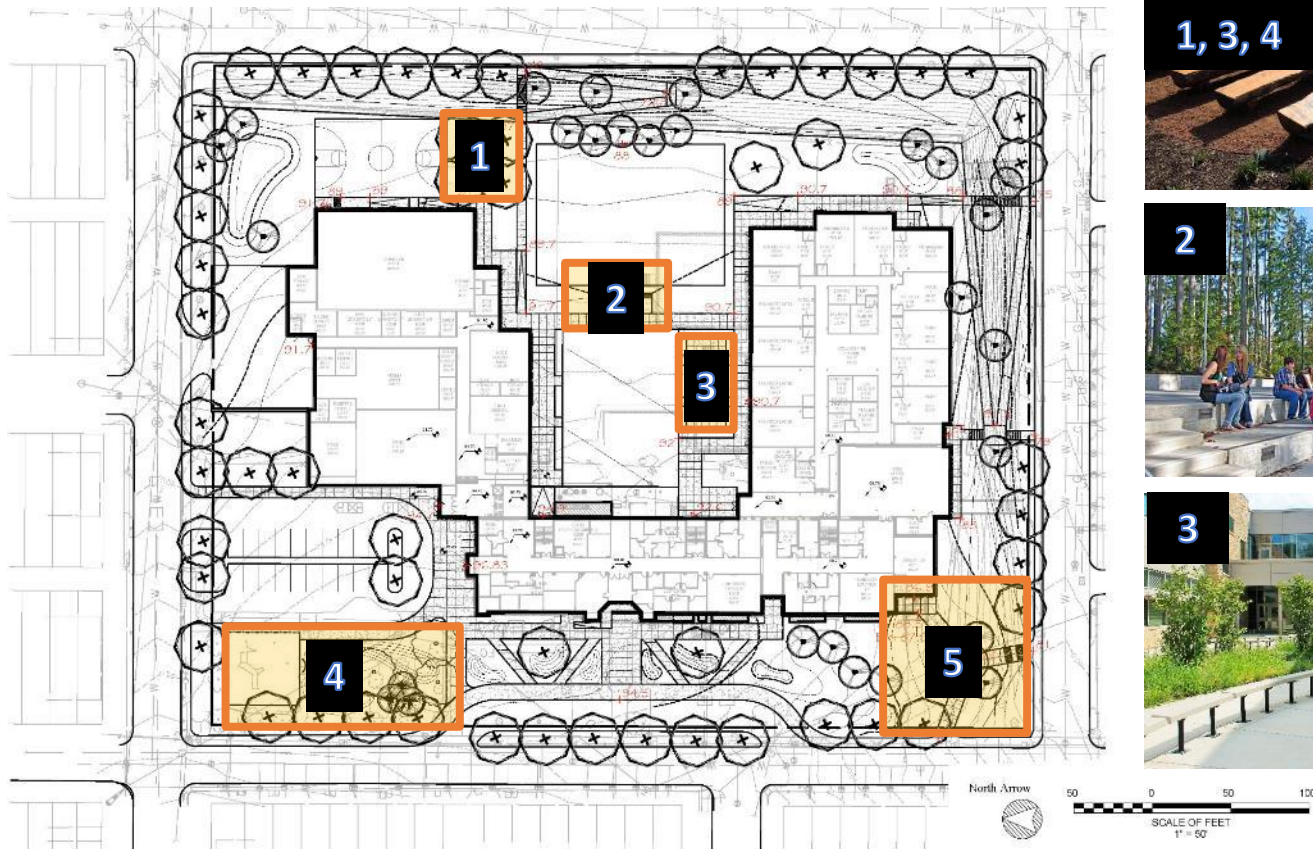
Proposed Landscape Plan



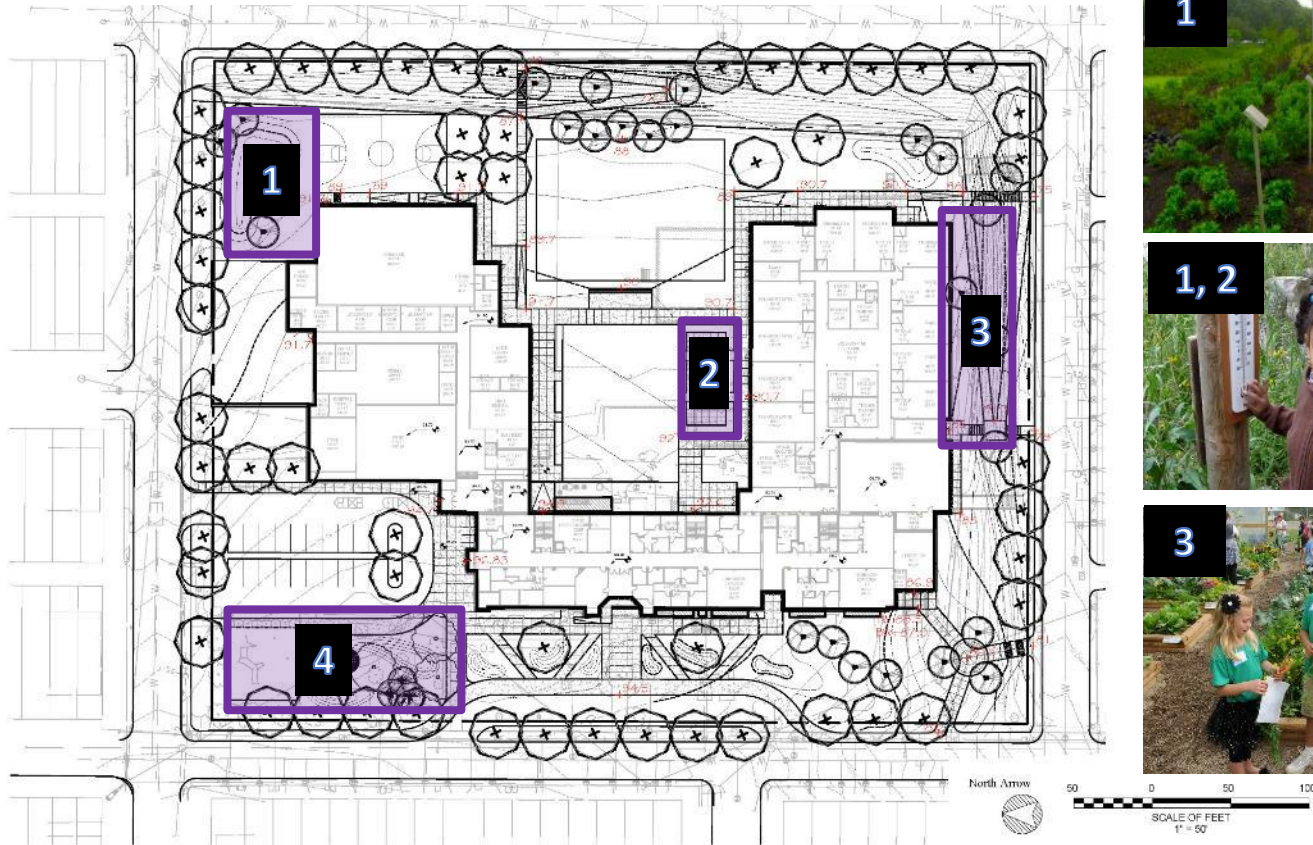
Landscape Concepts: General



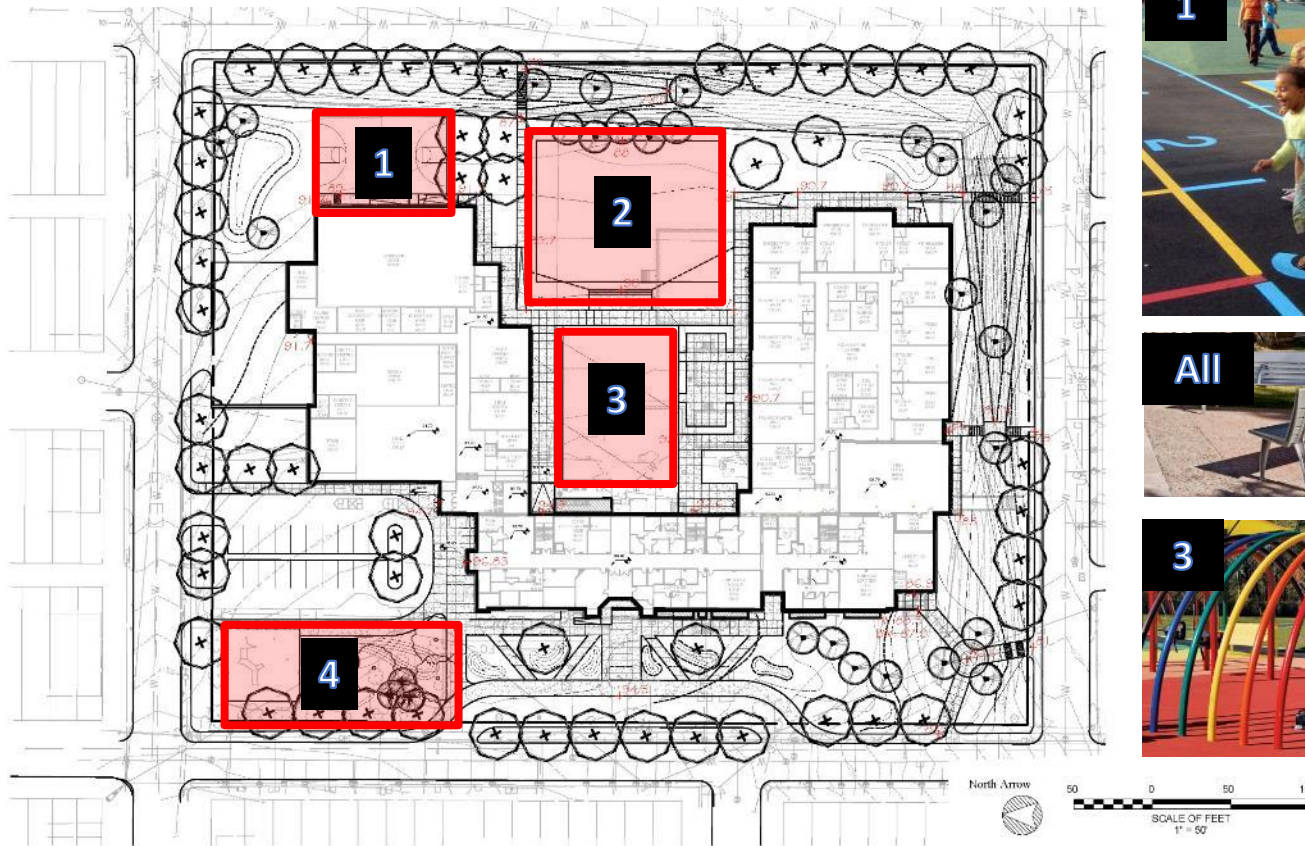
Landscape Concepts: Gathering



Landscape Concepts: Outdoor Learning



Landscape Concepts: Recreation and Play



Southwest Aerial View of Massing



Northwest Aerial View



