



21st Century School Buildings Plan

SCHOOL John Ruhrah Elementary/Middle

COMMUNITY MEETING Concept Design | December 13, 2017

BALTIMORE CITY
PUBLIC SCHOOLS



Introductions

Emily Sherman

Transition Support Coordinator
21st Century School Building Program
City Schools

Michael McBride

Design Director
21st Century School Building Program
City Schools

Dawn Sanders

John Ruhrah Project Manager
Maryland Stadium Authority

Paul Bradshaw

Principal
Grimm + Parker Architects

Agenda

- 21st Century School Buildings Program
- School Size and Program Requirements
- Academic Planning Process
- Existing Conditions
- Design Studies
- Site Design
- Floor Plans
- Exterior Views and Landscape
- Feedback

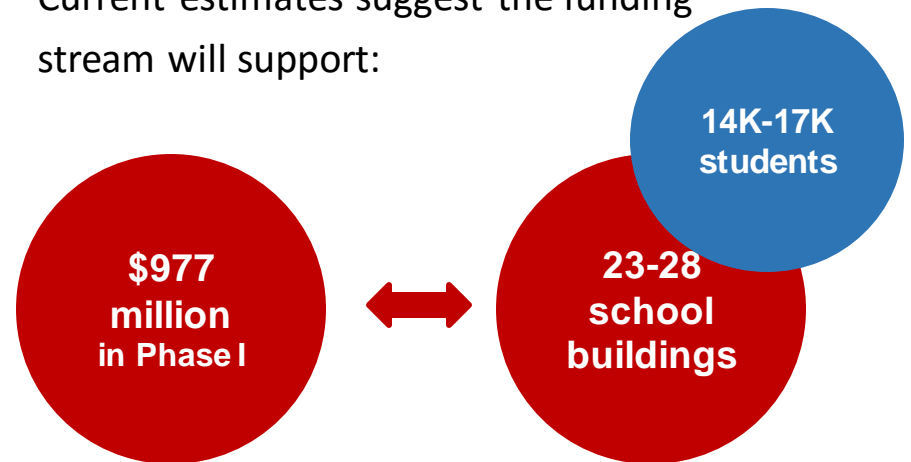
21st Century School Buildings Program Update

The Baltimore City Public School System (City Schools) Construction and Revitalization Act of 2013 resulted in a partnership between:

- The State of Maryland
- Baltimore City
- City Schools

Each contribute \$20 million annually towards the plan.

Current estimates suggest the funding stream will support:



City Schools' Plan is one of the largest public works project in Baltimore City to date.

School Program

(8) Pre K and Kindergarten Classrooms	(2) Art rooms
(8) 1 st and 2 nd grade classrooms	(1) Technology Lab
(12) 3 rd , 4 th and 5 th grade classrooms	(1) Foreign language room
(11) 6 th , 7 th , and 8 th grade classrooms	Media Center/ Video Studio
(7) Collaborative learning areas	Cafeteria
(5) Special Education classrooms	Gymnasium
(2) ESOL classrooms	Judy Resource Center
(3) Middle school science classrooms	International Family Center*
(1) Elementary school science classroom	Administration / Student Services
(2) Music classrooms	(835) SF Community Space



JOHN RUHRAH

ELEMENTARY / MIDDLE SCHOOL *"The School of Many Nations"*

VISION AND MISSION

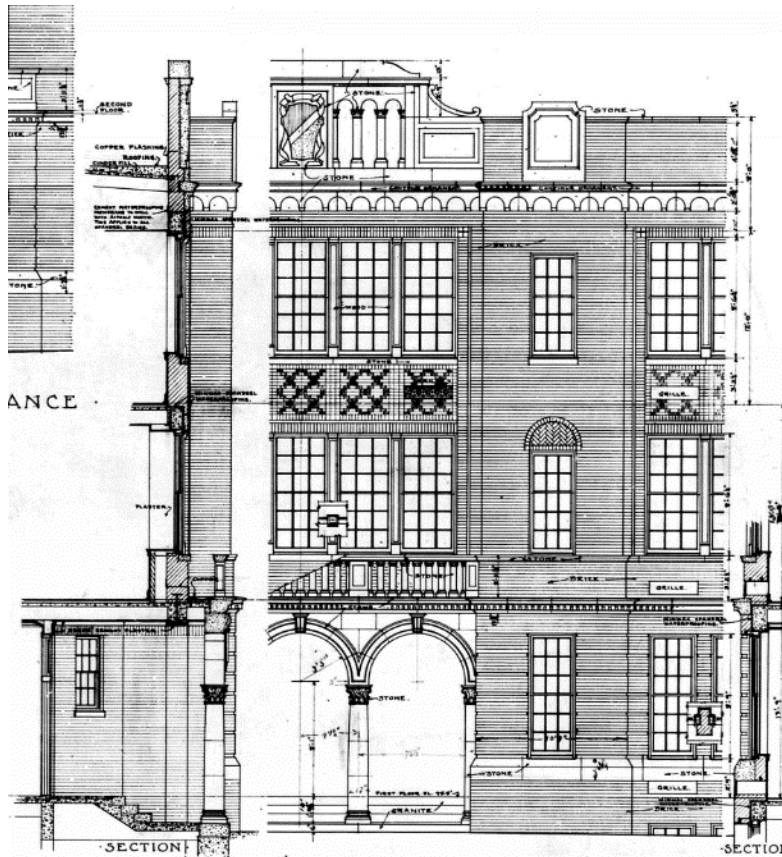
- To educate all of our students to be productive, engaged, life-long learners ready to compete in the 21st century global workplace.
- We will build students' intellectual curiosity and knowledge across all disciplines, along with a spirit of cross-cultural sensitivity and civic responsibility....in a safe, supportive, professional and collaborative school environment.

ACADEMIC PLANNING PROCESS

Begins about 9 months prior to the school opening.

- Academic Focus
- School Structures
- Community Traditions

PROGRAM AREA

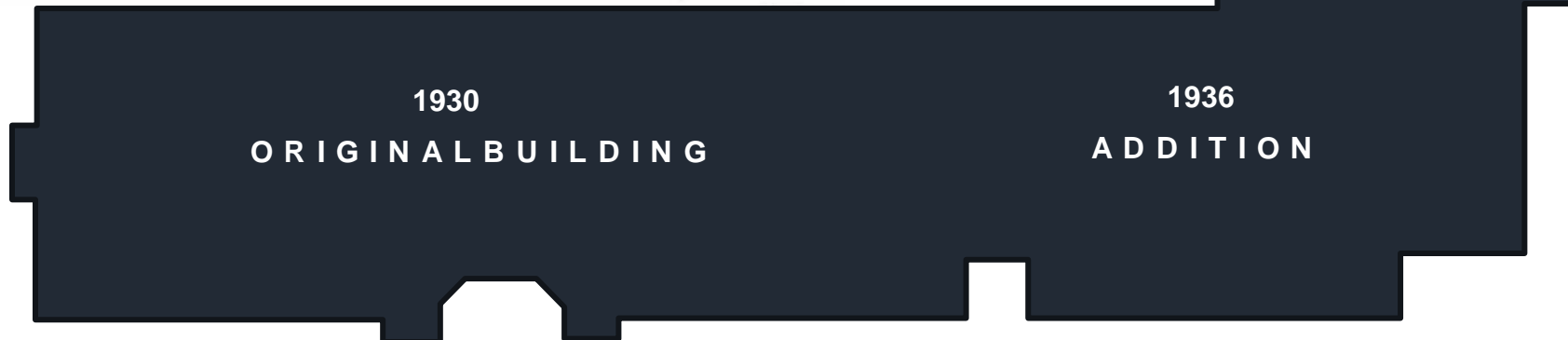


Original Architectural Drawing

SF = square footage

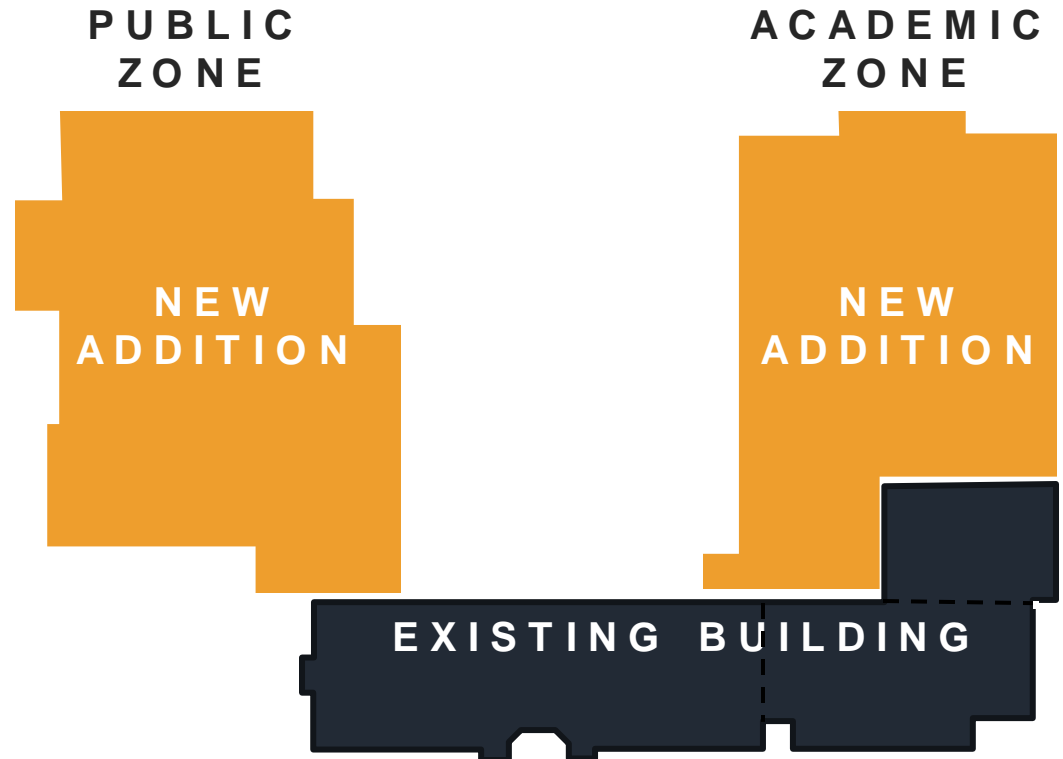
Existing Building (including the rec center)	60,309 SF
Existing Building (excluding the rec center)	53,132 SF
NEW School Building (excluding the rec center) <i>In accordance with the Educational Specifications</i>	135,000 SF

BUILDING REUSE



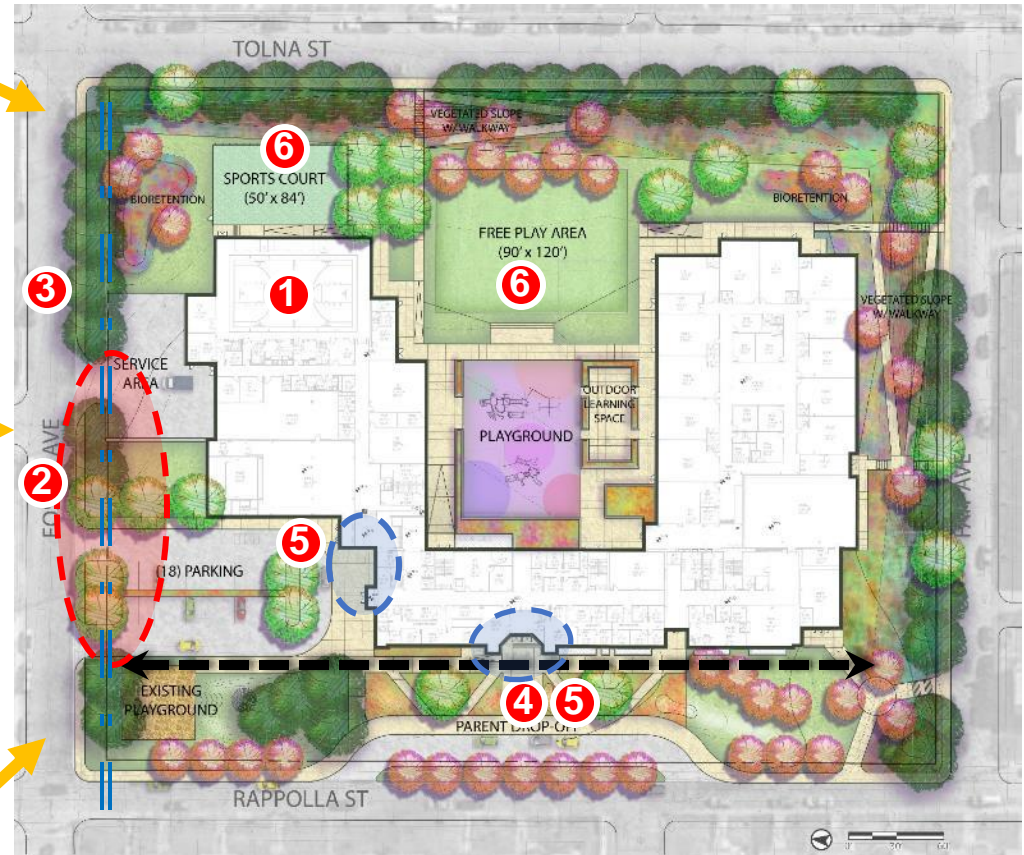
BUILDING ORGANIZATION - PREVIOUS

- Retain 1930, 1936 and 1974 structures
- Repurpose existing gymnasium
- New additions for classrooms and gymnasium spaces directly connected to historic building
- Separate the building into Public and Academic zones to allow for secure control of building after hours
- Maintain administrative functions in the existing building



REVIEW COMMENTS – WHAT WE HEARD

- ➔ 1 Gym is remote from Recreation Center
 - ➔ 2 Avoid pedestrian / traffic crossing
 - ➔ 3 Treat Foster Ave as a “school” façade
 - ➔ 4 Extend pedestrian axis along front of school from Foster Ave to Recreation Center Entrance
 - ➔ 5 Consider location of primary entry to school
 - ➔ 6 Enlarge size of playfield for soccer and consider other activities on sports court instead of basket ball.
- ➔ Major Pedestrian Approach
 - ▤ Pedestrian/vehicular conflict
 - ▤ School entry points .



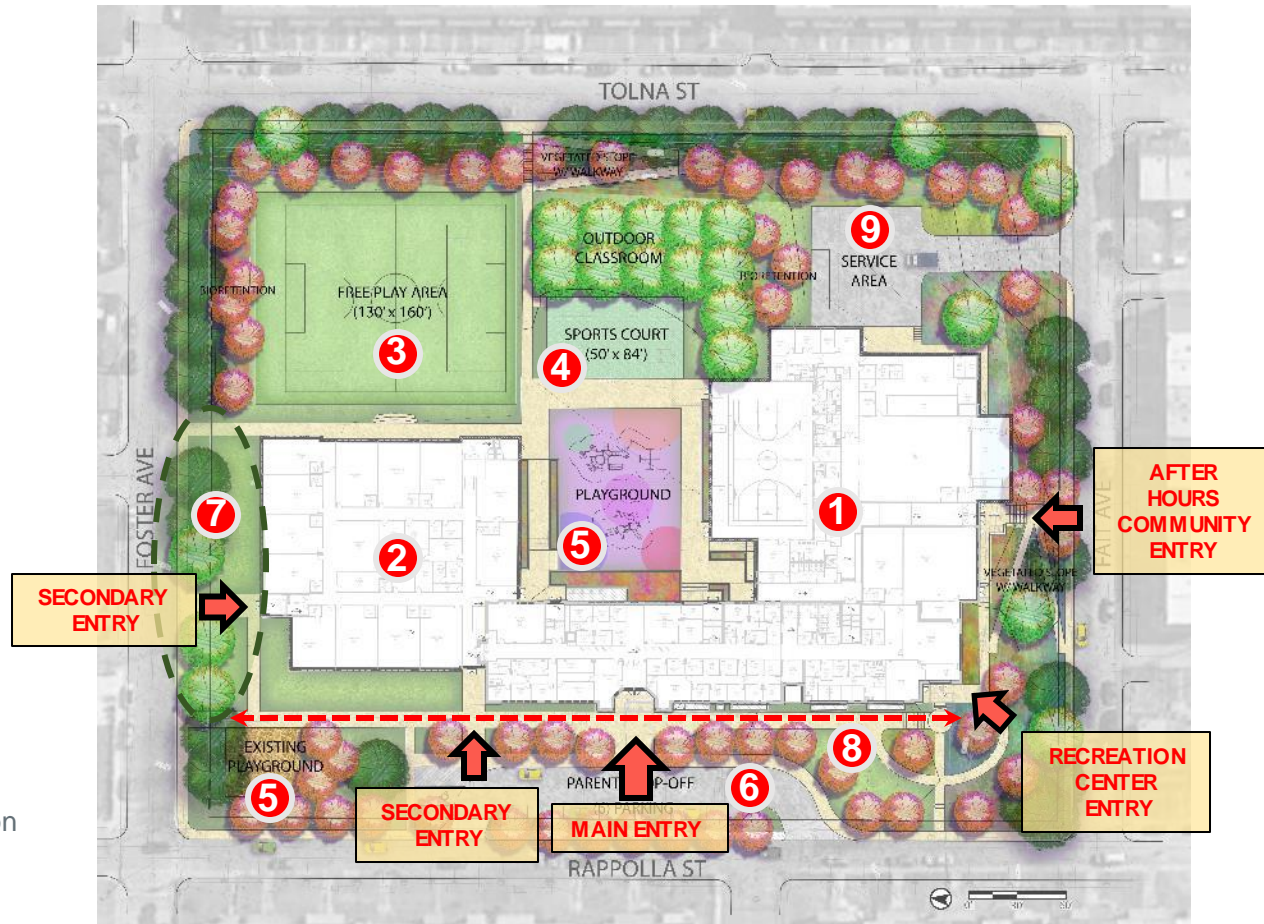
BUILDING ORGANIZATION

Switched Location of
Academic Additions

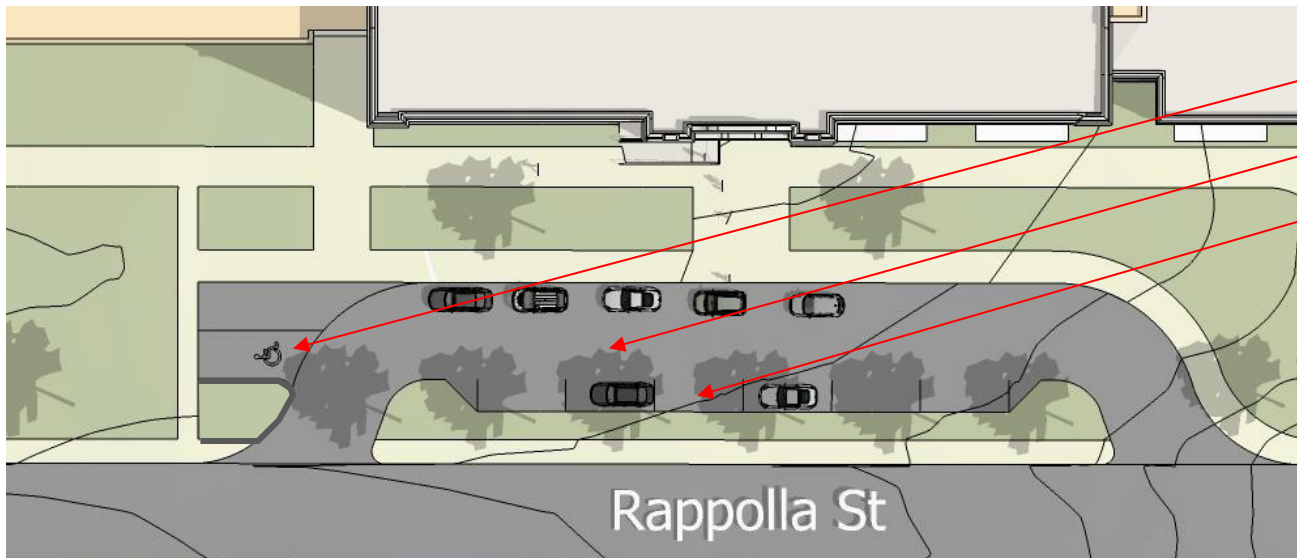


PROPOSED SITE PLAN

- 1 Public Wing location switched closer to Recreation Center
- 2 Academic Bar located on north side closer to major pedestrian approaches.
- 3 Relocated and increased soccer playfield size
- 4 Hard Surface Play
- 5 Playgrounds
- 6 Drop-off lane and 6 regular and 1 accessible parking spaces.
- 7 Resolved pedestrian/vehicular conflict.
- 8 Continuous on site sidewalk link from Foster Avenue to Recreation Center
- 9 Service Drive and service area accessed from Fait Avenue



SITE REVIEW - PARKING



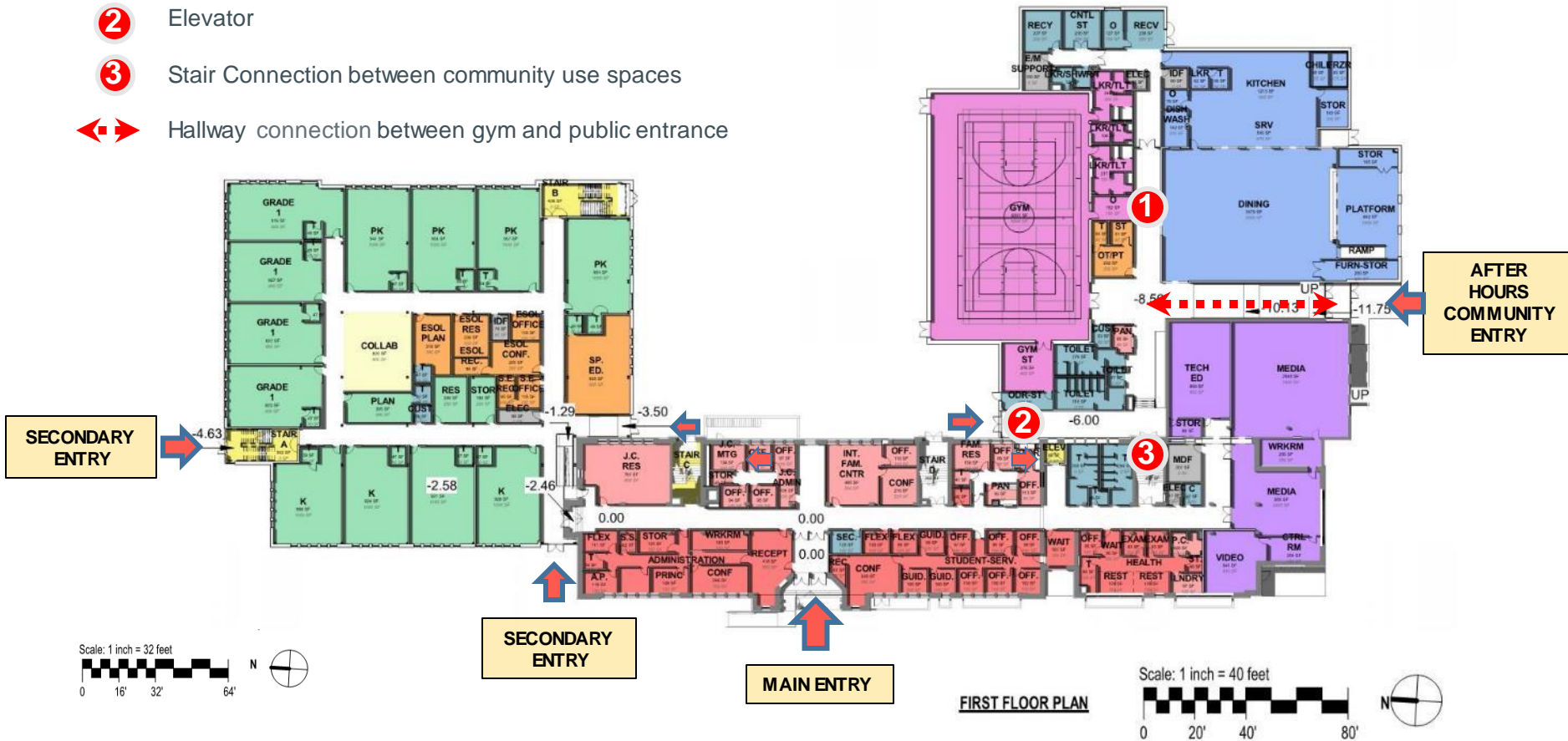
1 Handicapped space

Drop off lane no parking

6 Regular spaces

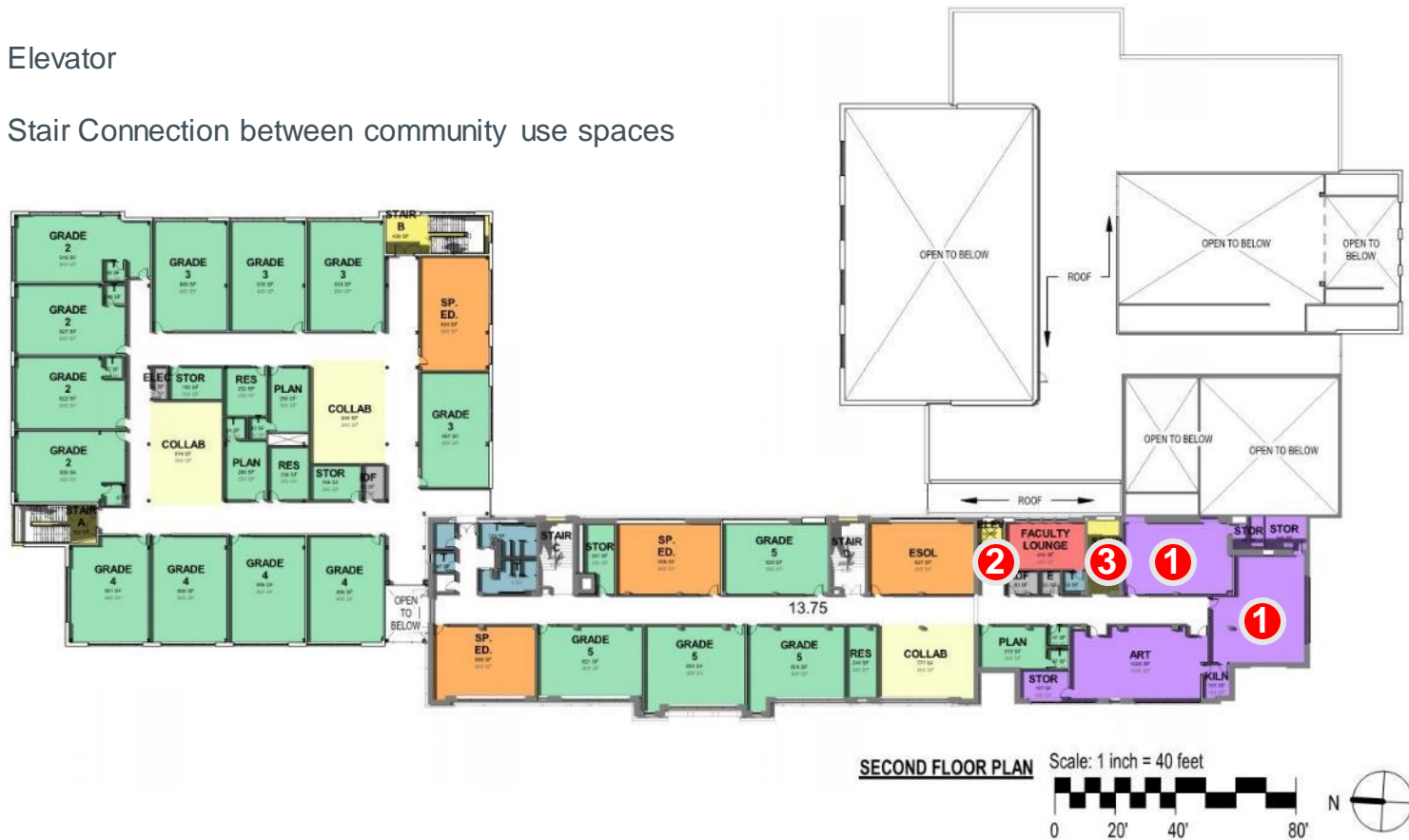
PROPOSED PLAN – FIRST FLOOR

- ① After Hours Community use spaces Gymnasium and Dining
- ② Elevator
- ③ Stair Connection between community use spaces
- ↔ Hallway connection between gym and public entrance



PROPOSED PLAN – SECOND FLOOR

- ① Art rooms
- ② Elevator
- ③ Stair Connection between community use spaces

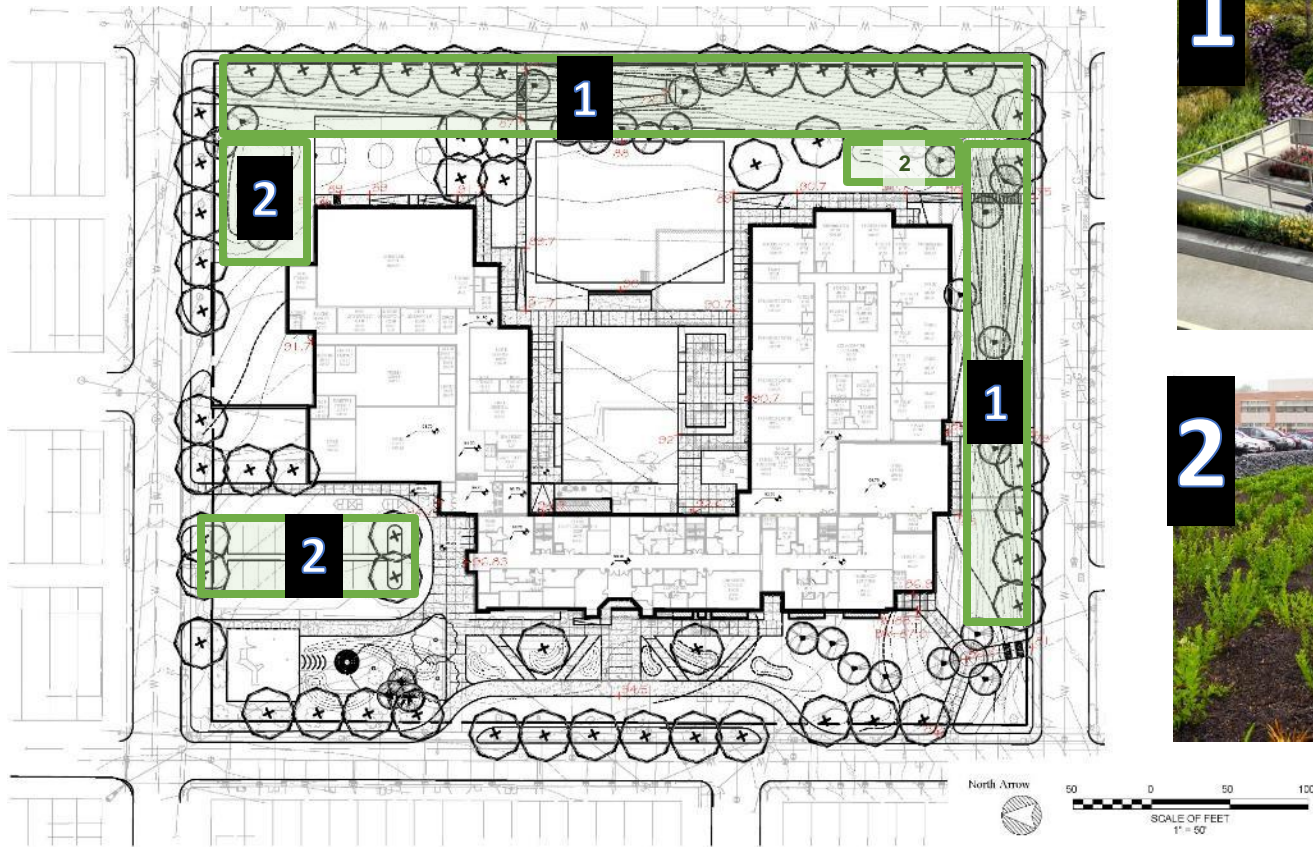


PROPOSED PLAN – THIRD FLOOR

- ① Elevator
- ② Proposed New Elevator Corridor Link



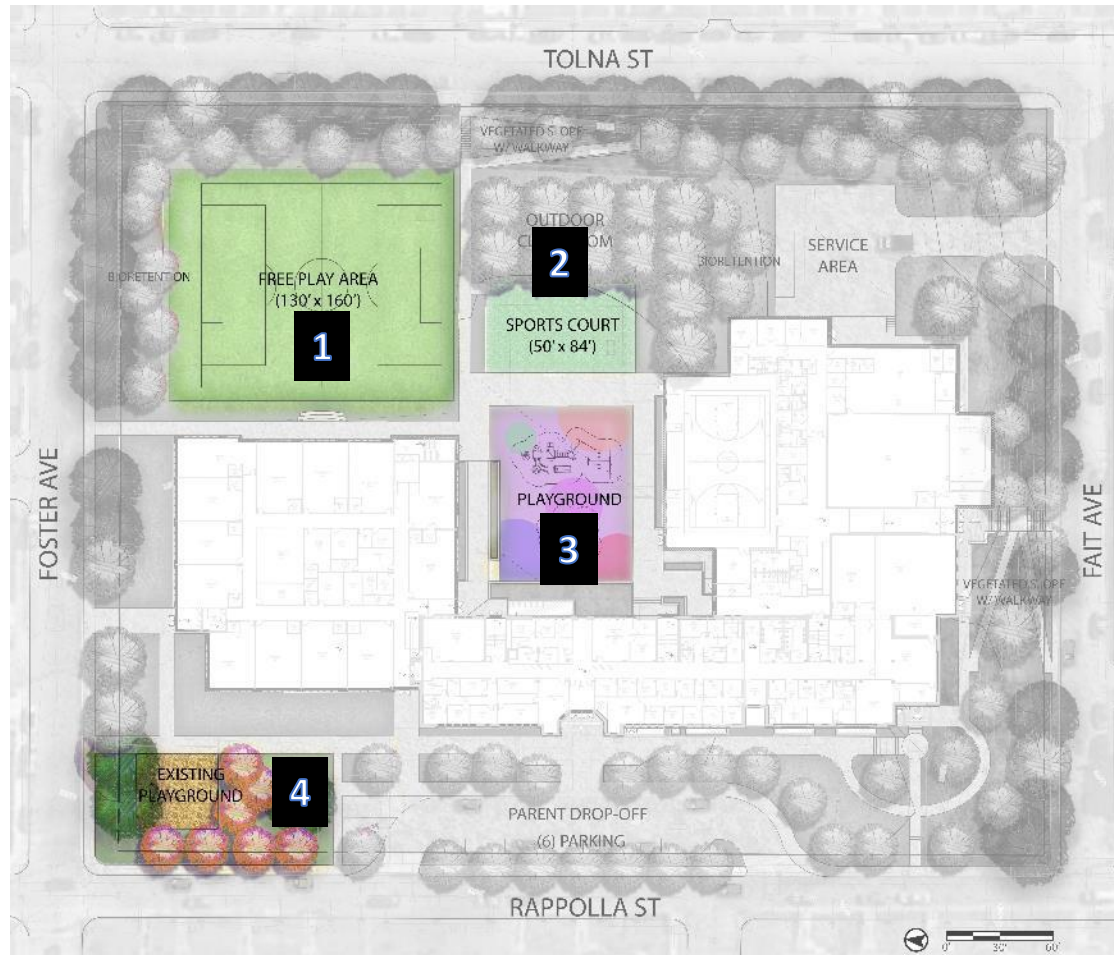
Landscape Concepts: General



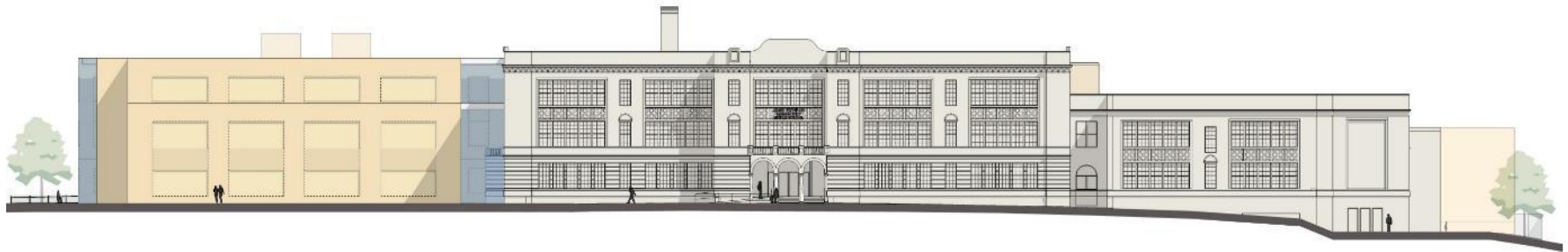
Landscape Concepts: Outdoor Learning



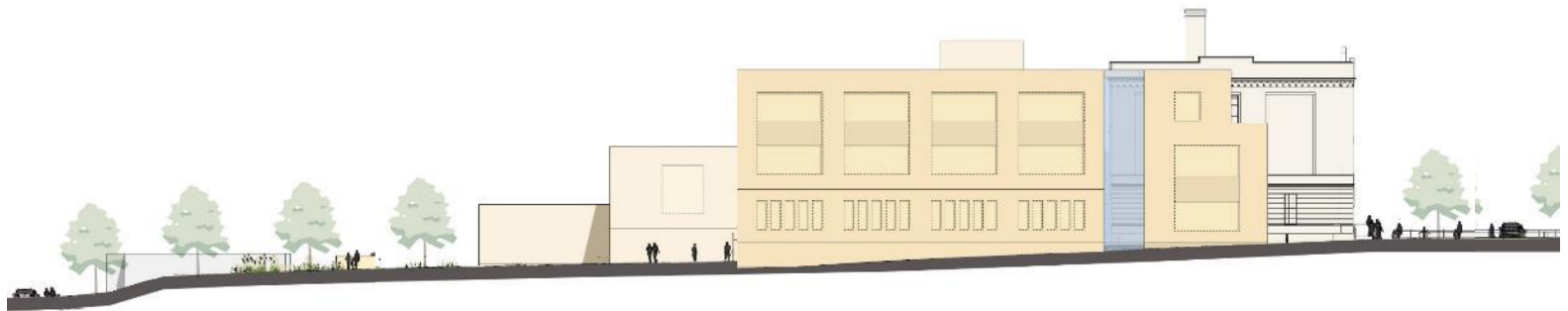
Landscape Concepts: Recreation and Play



MASSING – ELEVATION STUDIES



West Elevation



North Elevation

MASSING – ELEVATION STUDIES

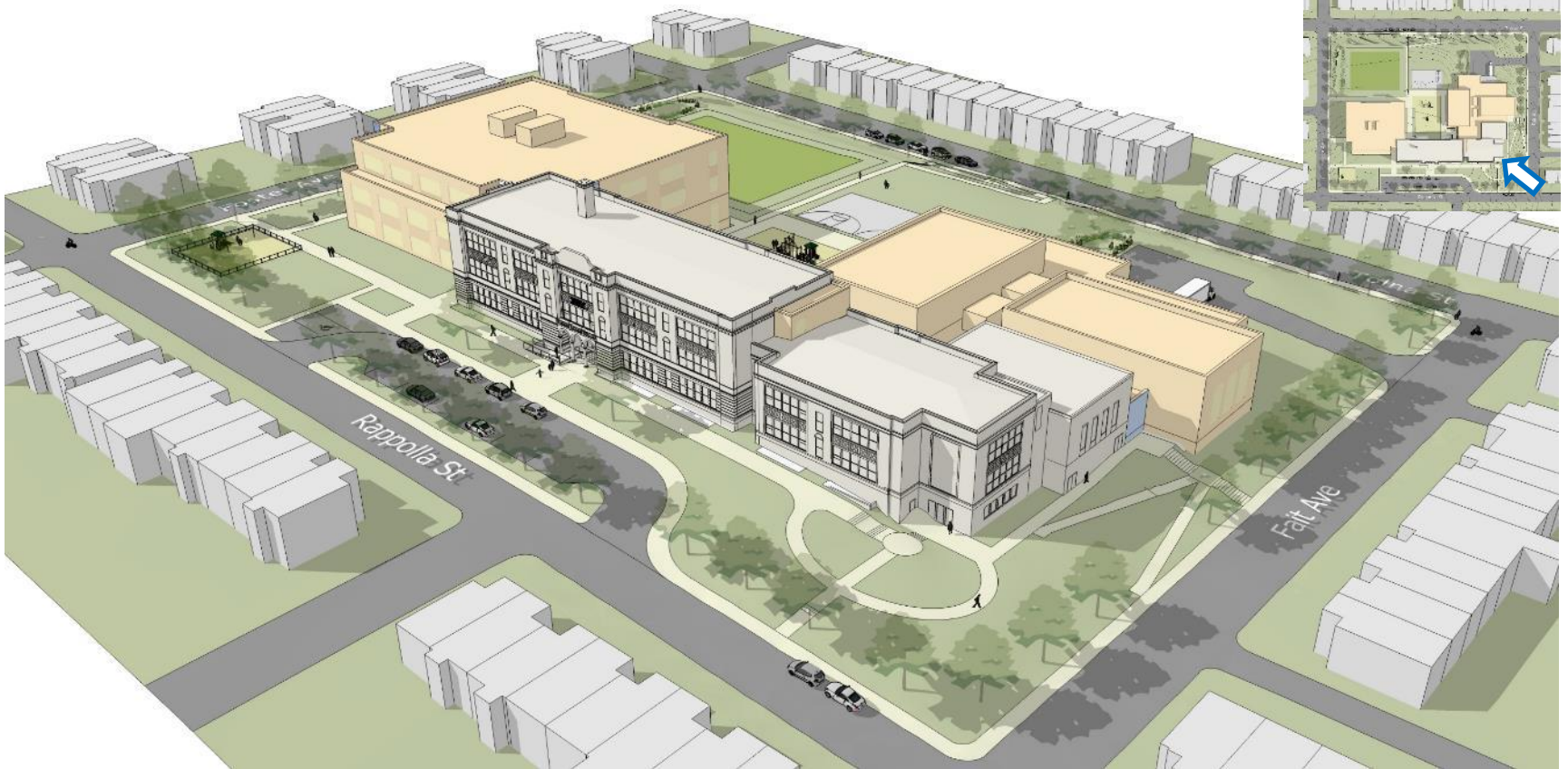


East Elevation



South Elevation

AERIAL VIEW OF MASSING - FROM SW



AERIAL VIEW OF MASSING - FROM NE



STREET VIEW OF MASSING - MAIN ENTRANCE



STREET VIEW OF MASSING - RAPPOLLA STREET & FOSTER AVENUE



STREET VIEW OF MASSING - TOLNA STREET



STREET VIEW OF MASSING - FAIT AVENUE & TOLNA STREET



STREET VIEW OF MASSING - RAPPOLLA STREET & FAIT AVENUE



Design - Current



Questions?

CONTACTS

Nicole Price

nprice@bcps.k12.md.us

Emily Sherman

esherman@bcps.k12.md.us

21st Century School Buildings

Program Office

(443) 642-4600

www.baltimore21stcenturyschools.org



Instagram

@21stCSBaltimore

Twitter

@21stCSBaltimore

Facebook

@21stCenturySchoolBuildingsProgram

Thank You!



This presentation is brought to you by the
21st Century School Buildings Program.

www.baltimore21stcenturyschools.org

21st Century School Buildings Program

Baltimore City Public Schools
200 East North Avenue Room 407-B
Baltimore MD 21202
(443) 642-4600

Mignon R. Anthony

Executive Director, 21st Century Buildings Program
Baltimore City Public Schools

Gary McGuigan

Senior Vice President, Capital Development Division
Maryland Stadium Authority

James T. Smith, Jr.

Chief of Strategic Alliances
City of Baltimore

Robert Gorrell

Executive Director, Public School Construction Program
State of Maryland

BALTIMORE CITY
PUBLIC SCHOOLS

