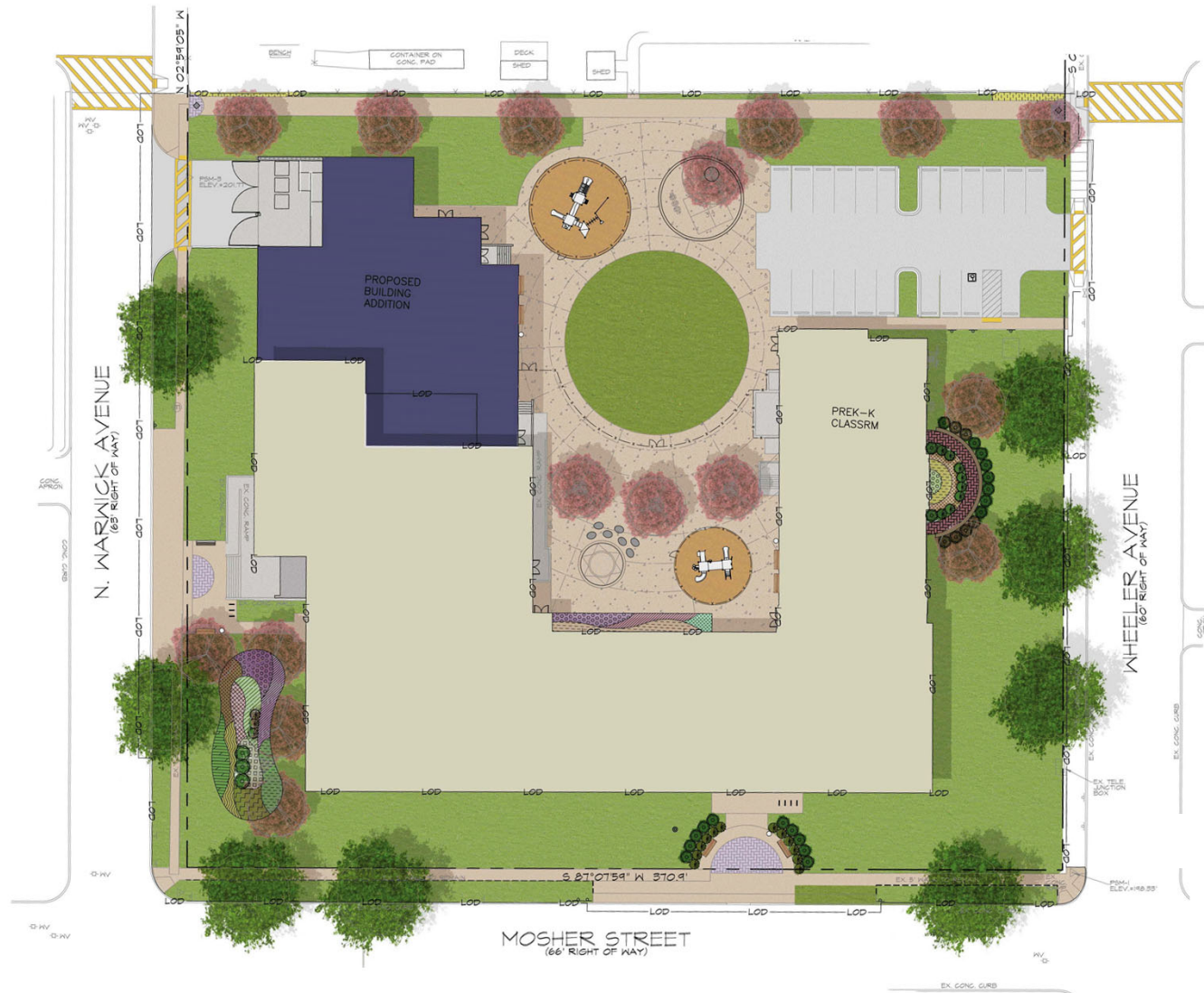




**21<sup>st</sup> Century School Buildings Program**  
James Mosher Elementary School  
Construction Progress Meeting 9.9.20

Presenters	Agenda
<p><b>Renee Stainrod</b> <i>rastainrod@bcps.k12.md.us</i> Manager, Community &amp; Public Relations 21<sup>st</sup> Century School Buildings Program</p> <p><b>Alicia Thomas</b> <i>athomas03@bcps.k12.md.us</i> Sr. Program Coordinator, Community &amp; Public Relations 21<sup>st</sup> Century School Buildings Program</p> <p><b>Tyler Dumont</b> <i>tdumont@mdstad.com</i> Senior Project Manager Maryland Stadium Authority</p> <p><b>Kyle Edmonds</b> Assistant Project Manager Maryland Stadium Authority</p> <p><b>Chris Ramsey</b> Project Manager Dustin Construction, Inc.</p>	<ul style="list-style-type: none"><li>· <b>Introductions &amp; Overview</b></li><li>· <b>Design Development (Recap)</b><ul style="list-style-type: none"><li>◦ Site Design</li><li>◦ Exterior Design</li></ul></li><li>· <b>Construction</b><ul style="list-style-type: none"><li>◦ Impacts to the Community</li><li>◦ Site Utilization Plan</li><li>◦ Traffic Plan</li><li>◦ Photos and Updates</li><li>◦ Important Dates</li></ul></li><li>· <b>Questions &amp; Program Info</b></li></ul>





**New Addition: 9,346 SF | Renovation: 66,265 SF**





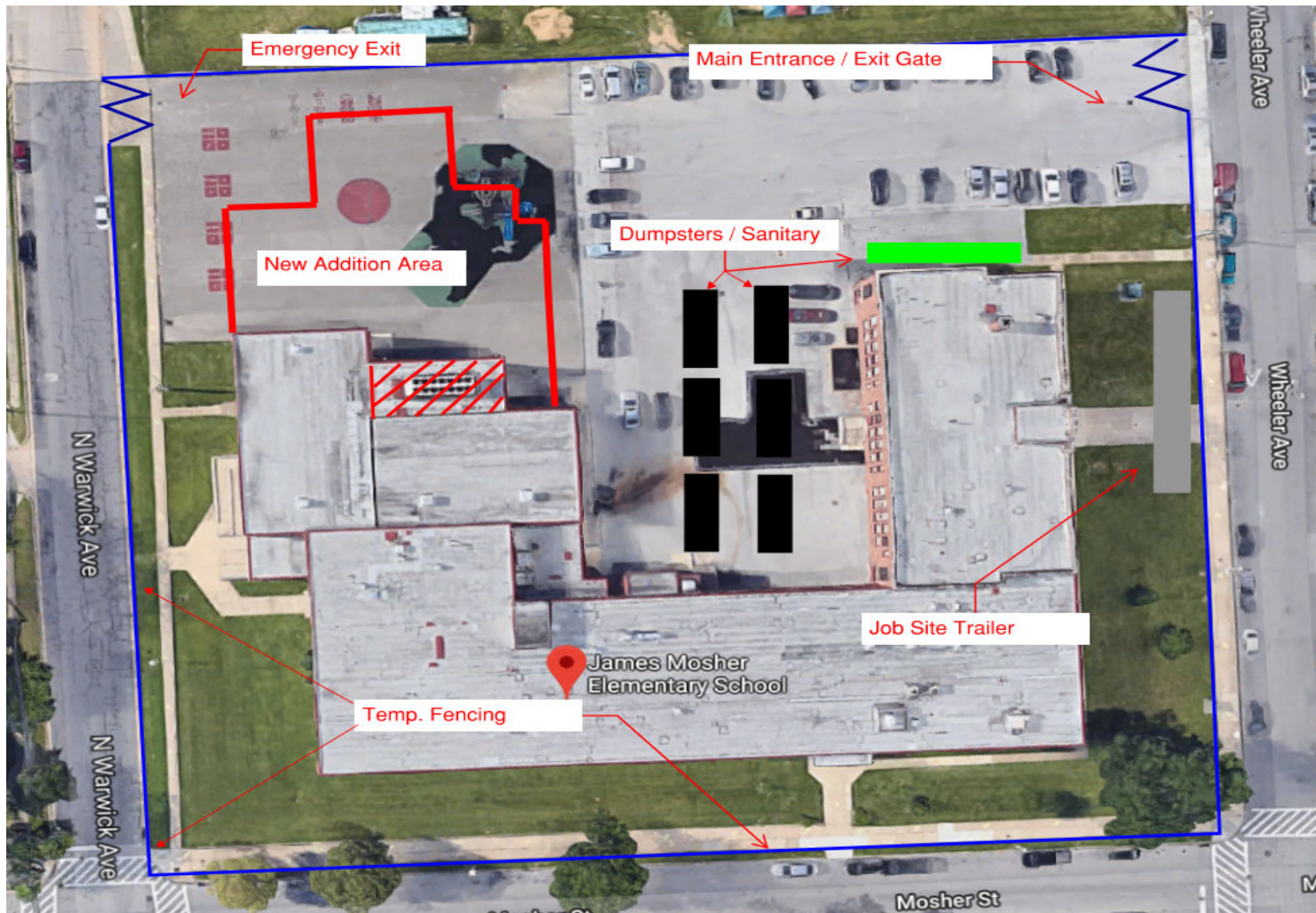


### Highlights

- Safety of all is Paramount
  - Security fencing
  - Cameras/Monitoring system
- Be a Good Neighbor
  - Cleanliness – trash pick-up on site
  - Wash rack at the construction entrance
  - Traffic routes
- Sediment Control and Runoff
  - Super silt fence
- Maintain and Respect Existing Building
  - Close windows each evening
  - Lock doors
- Protection of Ball Field
  - Existing fence – installed construction fence a few feet from ball field fence in order to provide an additional barrier.

## CONSTRUCTION

### Site Utilization Plan





# CONSTRUCTION

## Traffic Plan

**EXITING/ENTERING THE SITE**  
**Wheeler to Edmondson**  
**Wheeler to Mosher to Bentalou**





## CONSTRUCTION

## Aerial Photos – September 2020



James Mosher Elementary School | Construction Progress Meeting | September 2020



## CONSTRUCTION

### New Addition Steel Framing





## CONSTRUCTION

### Cafetorium Steel Framing and Decking





## CONSTRUCTION

### Interior Framing and Blocking





## CONSTRUCTION

## Interior Mechanical Ductwork





### Upcoming Events

- Steel Completion – September
- Roofing – September / October
- Exterior Façade – September / October

### Occupancy Milestones

- Mobilize – *April 2020*
- Substantial Completion – *July 2021*
- *Start of School – Late August 2021*





## Questions?

This presentation was brought to you by the 21<sup>st</sup> Century School Buildings Program.



21stCSBaltimore



21stCenturySchoolBuildingsProgram



21stCSBaltimore

[www.baltimore21stcenturyschools.org](http://www.baltimore21stcenturyschools.org)

### 21<sup>st</sup> Century School Buildings Program

Baltimore City Public Schools

200 East North Avenue Room 407-B

Baltimore MD 21202

(443) 642-4600

### Dorothy Hellman

Executive Director, 21<sup>st</sup> Century School Buildings Program

Baltimore City Public Schools

### Gary McGuigan

Executive Vice President, Capital Development Division

Maryland Stadium Authority

### Robert Gorrell

Executive Director, Public School Construction Program

State of Maryland

BALTIMORE CITY  
PUBLIC SCHOOLS

