



21st Century School Buildings Plan

SCHOOL James Mosher Elementary School PK-2

COMMUNITY MEETING Design Development | October 15, 2019

BALTIMORE CITY
PUBLIC SCHOOLS



WALDONSTUDIO
ARCHITECTS



Waldon Studio Architects / Hughes Group Architects /JOINT VENTURE

Introductions

Alicia Thomas

Community & Public Relations Program
Coordinator
21ST Century Schools

Tyler Dumont

21st Century School Buildings Program
Project Manager
Maryland Stadium Authority

Christa Kerrigan, AIA

Waldon Studio Architects/Hughes Group
Architects JOINT VENTURE

Agenda

1. PROJECT OVERVIEW & DESIGN PROCESS UPDATE
2. ENTRANCE IMPROVEMENTS & PROPOSED SITE PLAN LAYOUT
3. PROPOSED FLOOR PLAN
4. INTERIOR DESIGN & FURNISHING LAYOUTS
5. QUESTIONS AND COMMENTS

Design Goals

1. Renovate and add to the existing school to accommodate 405 PK-2 students base City Schools Ed Specs requirements.
2. Apply 21st Century Initiative design principals.
3. Improve site vehicular and bus drop-off, pedestrian circulation and service access.
4. Improve site security and accessibility of the play areas.
5. Enhance pedestrian link between Mosher and the nearby Calverton school.
6. Improve building energy performance
7. Improve main entry and bus drop-off entrances.



Schedule

Concept : 2 months

SD & DD: 4 months

Final Drawings: 5 months

11 months



Feb 2020

Design: 11 Months

Meeting #2
Concept



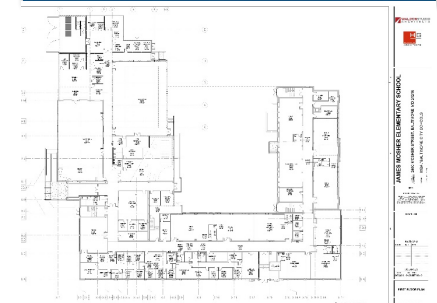
Meeting #3
Schematic (SD)



Meeting #4
**Design
Development (DD)**



Meeting #5
**Final Drawings
(CD)**



DESIGN DEVELOPMENT

Exterior Entrance



PROPOSED RENOVATED MAIN SCHOOL ENTRY AT MOSHER STREET

EXISTING SCHOOL ENTRY AT MOSHER STREET

DESIGN DEVELOPMENT

Exterior Entrance



PROPOSED ENTRY/ BUS DROP-OFF AT WARWICK AVE.



EXISTING

DESIGN DEVELOPMENT

Site Design



DESIGN DEVELOPMENT

Playground Examples



DESIGN DEVELOPMENT

Plantings Examples

PROPOSED TREES



AMERICAN HORNBEAM



WILLOW OAK



EASTERN REDBUD



SHADBLOW SERVICEBERRY

PROPOSED SHRUBS



INKBERRY



SWEET PEPPERBUSH



OTTO LUYKEN LAUREL

PROPOSED PERENNIALS AND ORNAMENTAL GRASSES



TUFTED HAIR GRASS



CREeping LILYTURF



VARIEGATED LILYTURF



CORAL BELLS

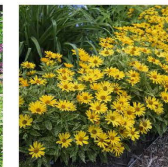
PROPOSED STORMWATER PLANTING



BLUE FALSE INDIGO



JOE PYE WEED



OXEYE SUNFLOWER



RIVER BIRCH

DESIGN DEVELOPMENT

First Floor Plan



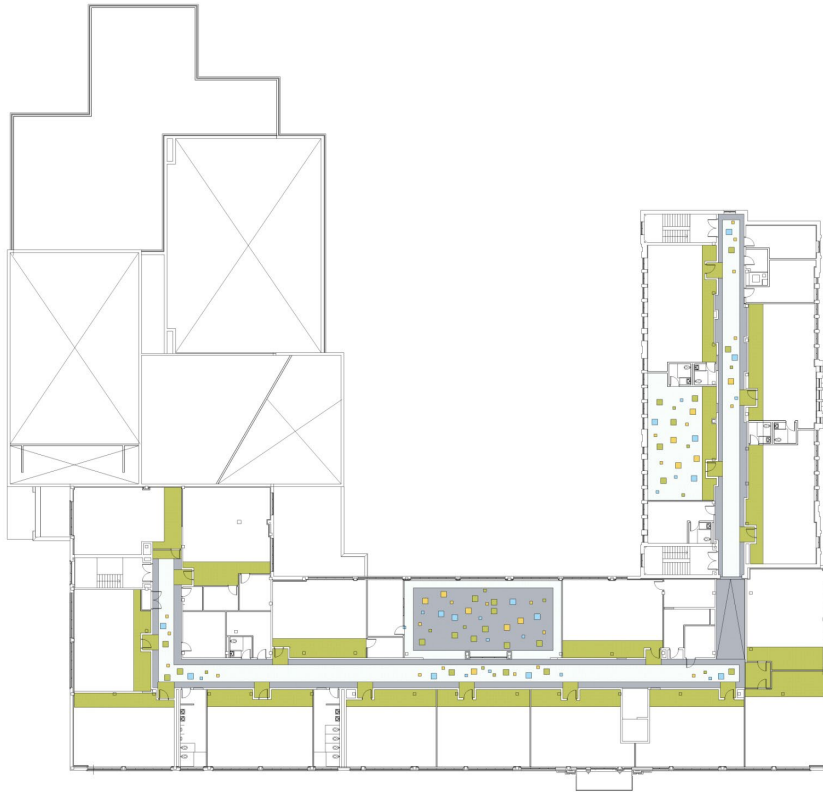
DESIGN DEVELOPMENT

Second Floor Plan

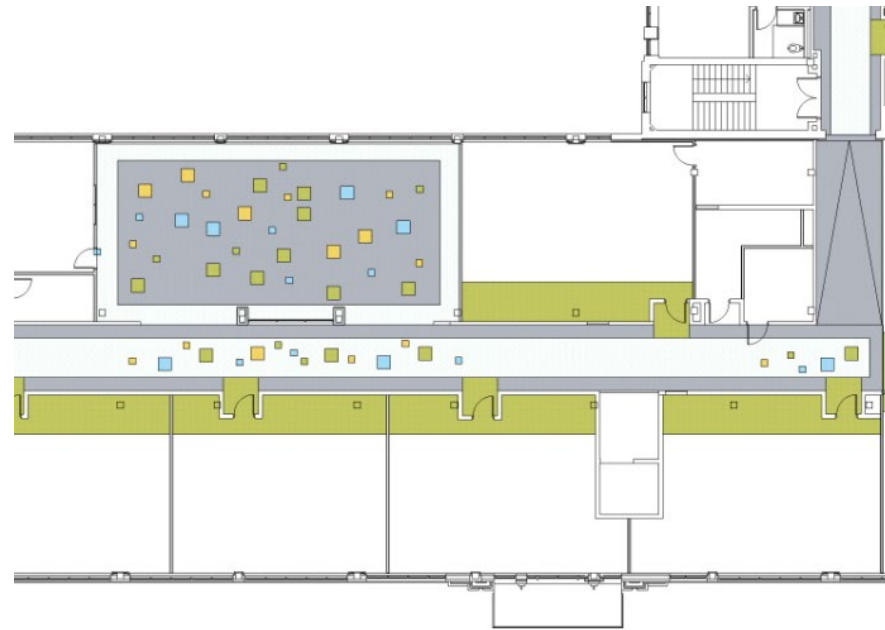
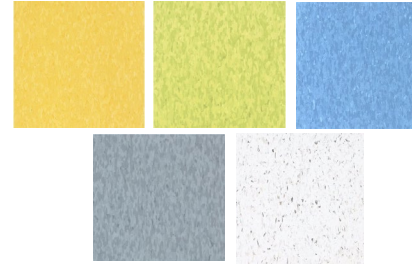


DESIGN DEVELOPMENT

Typical Corridor



SECOND FLOOR



DESIGN DEVELOPMENT

Typical Corridor

COMMUNITY DISPLAY WALL (CERAMIC TILE MURAL)

TYPICAL CORRIDOR



DESIGN DEVELOPMENT

Typical Classroom



DESIGN DEVELOPMENT

Media Center



DESIGN DEVELOPMENT

Cafetorium



DESIGN DEVELOPMENT

Cafetorium



DESIGN DEVELOPMENT

Gymnasium



Questions?

CONTACTS

Alicia Thomas
athomas@bcps.k12.md.us

**21st Century School Buildings
Program Office**
(443) 642-4600

www.baltimore21stcenturyschools.org



Instagram
@21stCSBaltimore

Twitter
@21stCSBaltimore

Facebook
@21stCenturySchoolBuildingsProgram

Thank You!



This presentation is brought to you by the
21st Century School Buildings Program.

www.baltimore21stcenturyschools.org

21st Century School Buildings Program

Baltimore City Public Schools
200 East North Avenue Room 407-B
Baltimore MD 21202
(443) 642-4600

Dorothy Hellman

Executive Director, 21st Century Schools
Baltimore City Public Schools

Gary McGuigan

Senior Vice President, Capital Development Division
Maryland Stadium Authority

James T. Smith, Jr.

Chief of Strategic Alliances
City of Baltimore

Robert Gorrell

Executive Director, Public School Construction Program
State of Maryland

BALTIMORE CITY
PUBLIC SCHOOLS

