



21st Century School Buildings Program

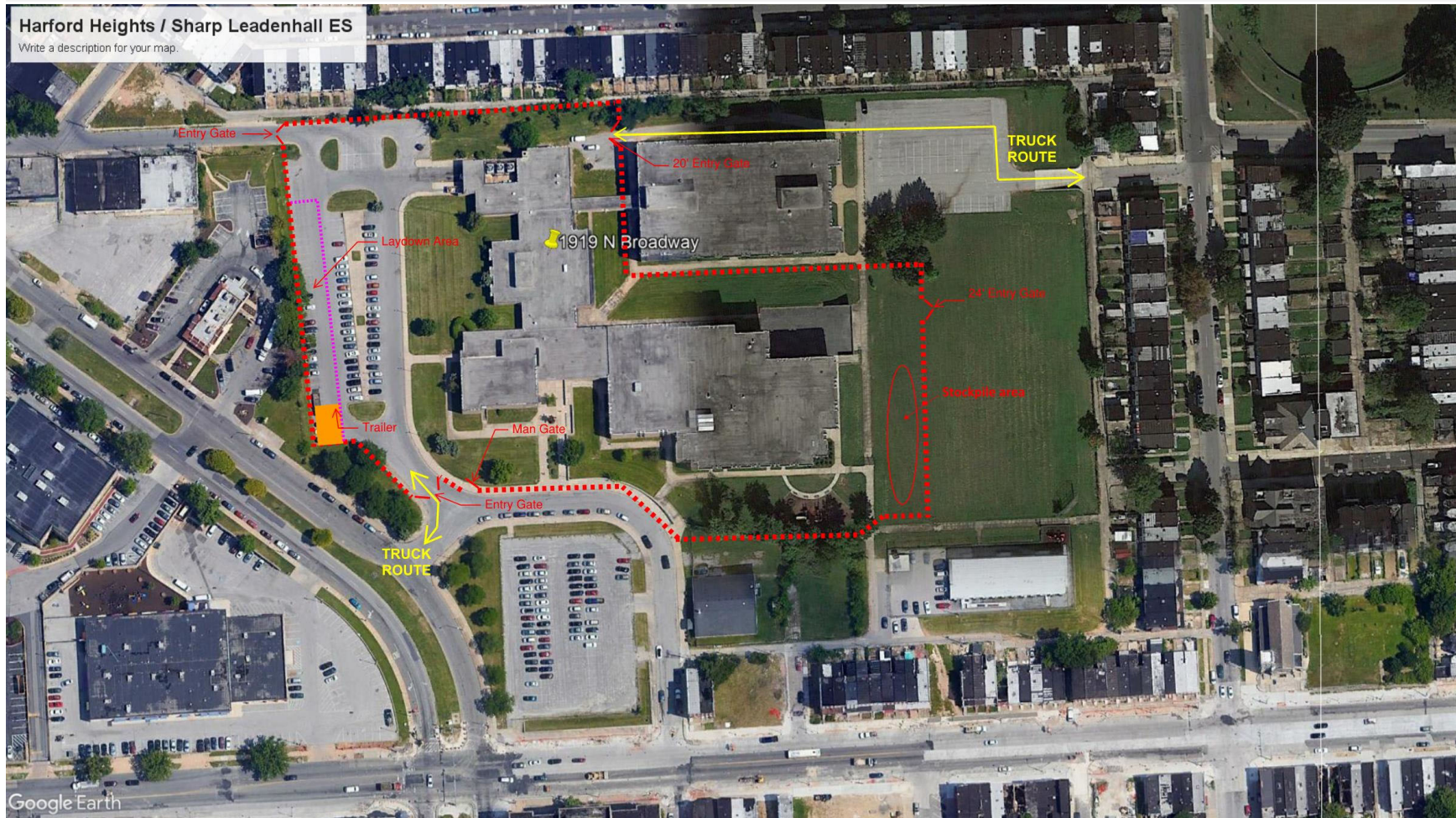
Harford Heights Elementary School & Sharp-Leadenhall Elementary School
Construction Update Meeting | April 7, 2021

BALTIMORE CITY
PUBLIC SCHOOLS



Presenters	Agenda
<p>Renee Stainrod Manager, Community & Public Relations 21st Century School Buildings Program</p> <p>Alicia Thomas Sr. Coordinator, Community & Public Relations 21st Century School Buildings Program</p> <p>Tim Cober Project Manager Maryland Stadium Authority</p> <p>Thomas Grubb Project Manager MCN Build/Southway Builders</p>	<ul style="list-style-type: none"> • Introductions and Agenda • Site Logistics Plan • General Notes • New Construction Floor Plan • Progress Photos • Upcoming Schedule Highlights • Team Contacts • Questions

Broadway entrance and “limited traffic” entrance at Wolfe Street to gate at existing boiler room. Temporary road across the field has been removed and limited traffic will come across the field only as needed and coordinated with MSA.



Construction

General Notes

- Hours of operation:
 - Monday to Saturday
 - 7 a.m. to 5 p.m.
- Armed security guards during hours of operation and 24-hour video monitoring
- Health personnel for COVID screening and hand wash stations
- Bi-weekly lawn care



Construction

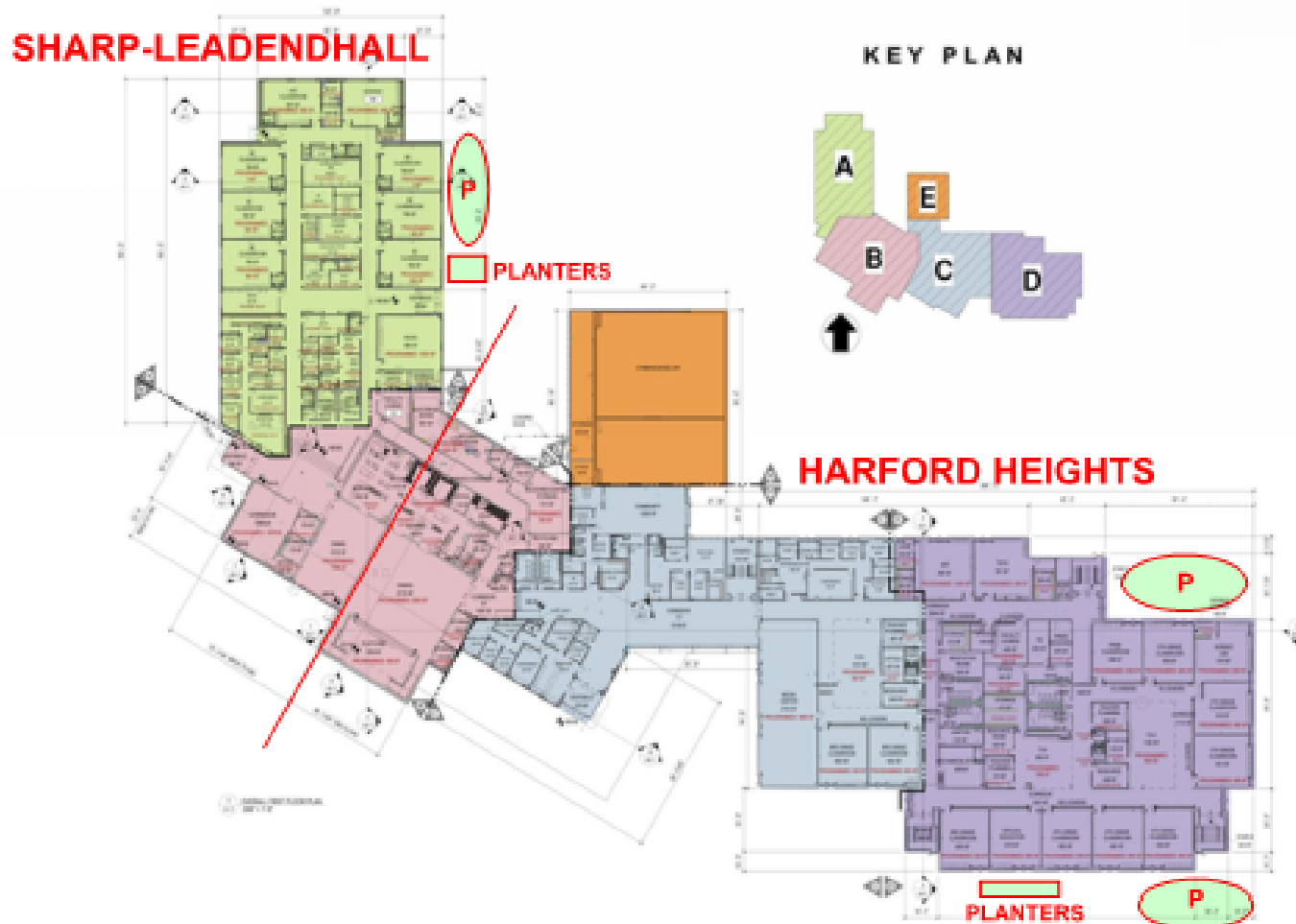
Harford Heights/Sharp-Leadenhall New Construction Floor Plan

A = Sharp-Leadenhall

B = Aux. Gym, Cafetorium, and Kitchen

C & D = Harford Heights

E = Music and Gym



Construction

Progress – Harford Heights/Sharp Leadenhall Exterior Improvements



Main Entrance to Sharp-Leadenhall



Main Entrance to Sharp-Leadenhall



Sharp-Leadenhall - Corridor



Sharp-Leadenhall - Classroom



Sharp-Leadenhall - Cafeteria



Sharp-Leadenhall - Gymnasium



Harford Heights – Main Entrance



Harford Heights – Main Entrance

Construction

Progress – Harford Heights



Harford Heights – Collaborative Learning Area



Harford Heights – Classroom



Harford Heights – Cafetorium



Harford Heights – Cafetorium

Construction

Progress – Harford Heights/Sharp-Leadenhall



Kitchen Walk-in Boxes



Kitchen Equipment



Typical Interior of Main Entrances



Typical Group Bathroom

Time Frame	Activity
April/May	Complete Installation of Casework
April/May	Complete installation of flooring
April/May	Complete Kitchen
April/May	Complete Installation of Classroom IT
April/May	Complete Sitework (Paving, Plantings, Grass)

Project Contacts

Tim Cober

tcober@mdstad.com

Renee Stainrod

rastainrod@bcps.k12.md.us

443-469-8013

Alicia Thomas

athomas03@bcps.k12.md.us

443-240-2359

MCN Build/Southway Builders Project Team

Bill Beschorner

Project Executive

Tom Grubb

Project Manager

202-285-7403

Jared Blocher

Superintendent

202-257-9203

John Norton

Assistant Project Manager

Ed Wasilewski

Superintendent

202-340-4985

Questions?

21st Century School Buildings Program Office

www.baltimore21stcenturyschools.org
(443) 642-4600



21stCSBaltimore



21stCenturySchoolBuildingsProgram



21stCSBaltimore

Thank You!



This presentation is brought to you by the
21st Century School Buildings Program.

www.baltimore21stcenturyschools.org

21st Century School Buildings Program

Baltimore City Public Schools
200 East North Avenue Room 407-B
Baltimore MD 21202
(443) 642-4600

Dorothy Hellman

Executive Director, 21st Century Buildings Program
Baltimore City Public Schools

Gary McGuigan

Senior Vice President, Capital Development Division
Maryland Stadium Authority

Tisha Edwards

Executive Director
Mayor's Office of Children and Family Success

Robert Gorrell

Executive Director, Public School Construction Program
State of Maryland

BALTIMORE CITY
PUBLIC SCHOOLS

