



21st Century School Buildings Program

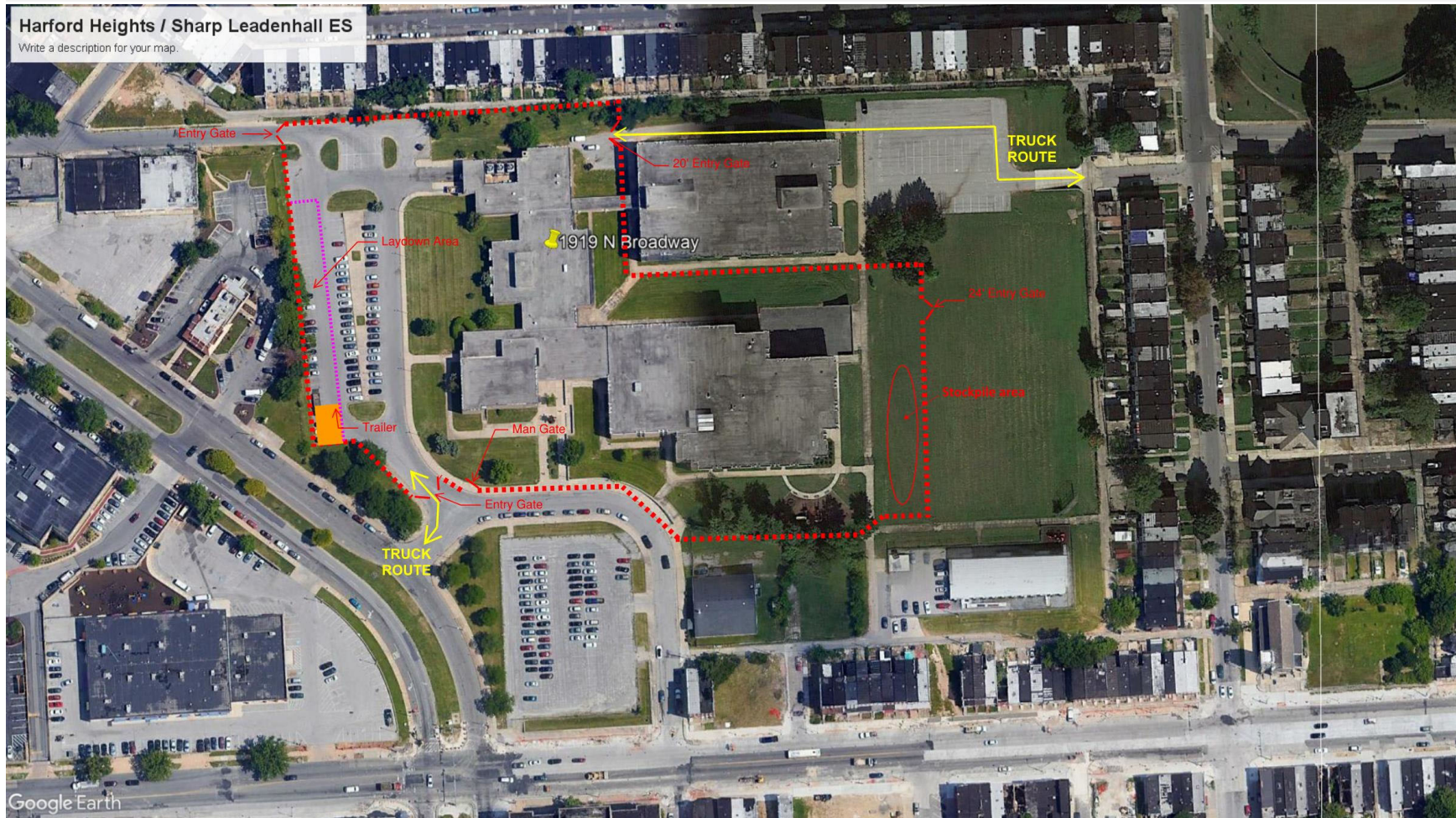
Harford Heights Elementary School & Sharp-Leadenhall Elementary School
Construction Update Meeting | January 7, 2021

BALTIMORE CITY
PUBLIC SCHOOLS



Presenters	Agenda
<p>Renee Stainrod Manager, Community & Public Relations 21st Century School Buildings Program</p> <p>Alicia Thomas Sr. Coordinator, Community & Public Relations 21st Century School Buildings Program</p> <p>Tim Cober Project Manager Maryland Stadium Authority</p> <p>Thomas Grubb Project Manager MCN Build/Southway Builders</p>	<ul style="list-style-type: none"> • Introductions and Agenda • Site Logistics Plan • General Notes • New Construction Floor Plan • Progress Photos • Upcoming Schedule Highlights • Team Contacts • Questions

Broadway entrance and “limited traffic” entrance at Wolfe Street to gate at existing boiler room. Temporary road across the field has been removed and limited traffic will come across the field only as needed and coordinated with MSA.



Construction

General Notes

- Hours of operation:
 - Monday to Saturday
 - 7 a.m. to 5 p.m.
- Armed security guards during hours of operation and 24-hour video monitoring
- Health personnel for COVID screening and hand wash stations
- Bi-weekly lawn care



Construction

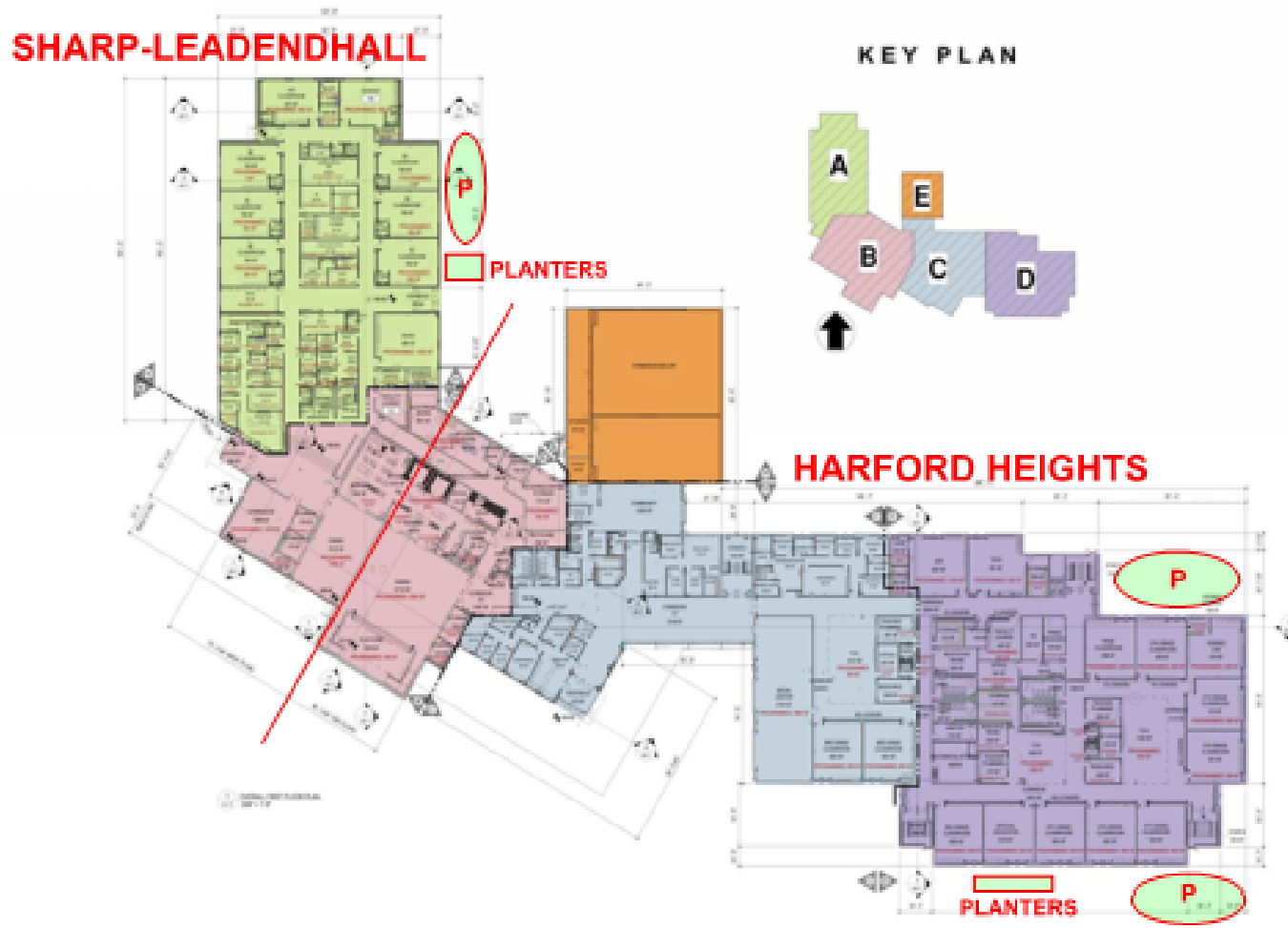
Harford Heights/Sharp-Leadenhall New Construction Floor Plan

A = Sharp-Leadenhall

B = Aux. Gym, Cafetorium, and Kitchen

C & D = Harford Heights

E = Music and Gym



Construction

Progress – Harford Heights/Sharp Leadenhall Exterior Improvements



Exterior From Broadway Entrance - Area A & B and New Parking Lot Being Installed

New Generator and Transformer

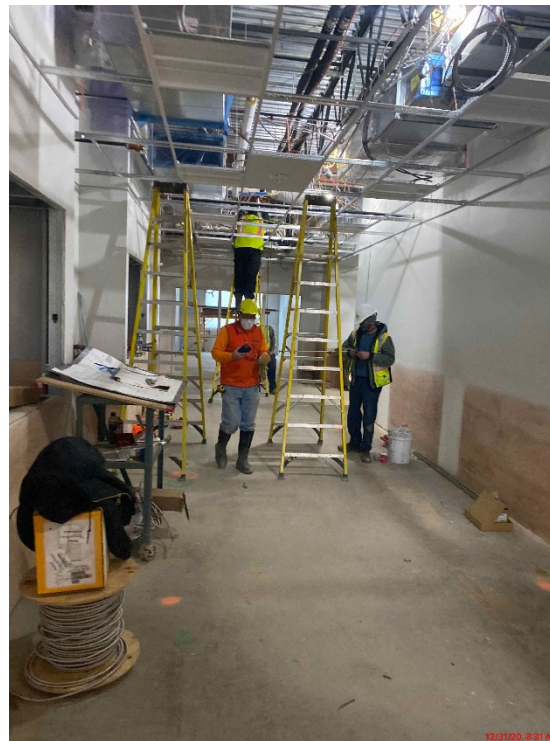


Exterior From Broadway Entrance - Area B, C and D.



Area A Corridor

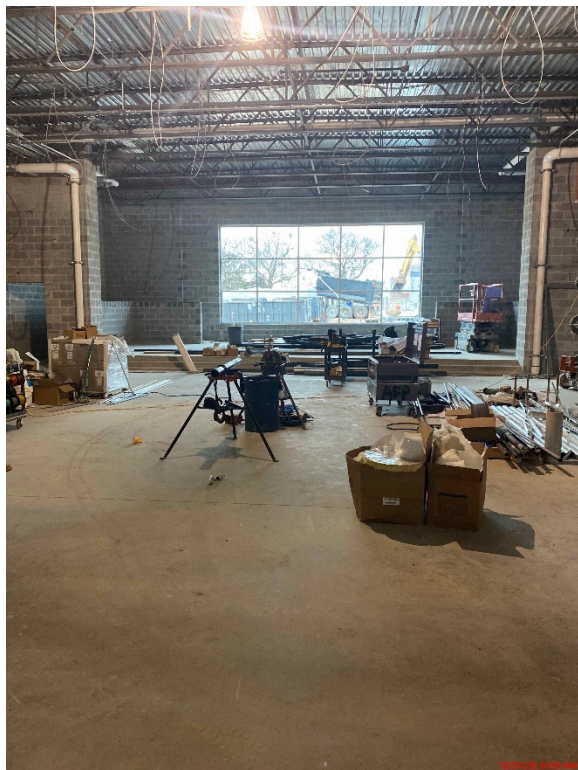
Work above ceiling Area A



Classroom Interior

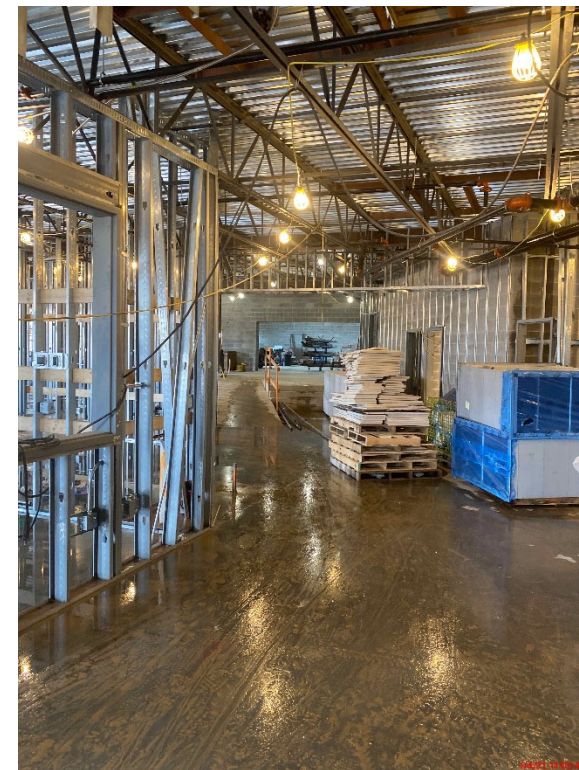
Construction

Progress – Harford Heights



Interior of Area B - Cafetorium

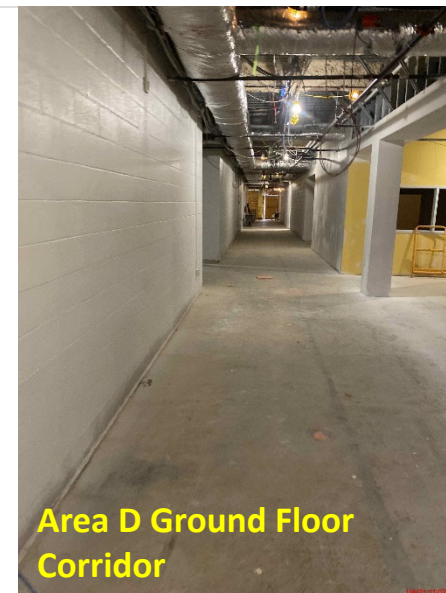
Interior Area E - Gym



Interior of Area C – Ramp To Cafetorium/Kitchen

Construction

Progress – Harford Heights



Time Frame	Activity
January/February	Continue Paint, Ceilings, Flooring and Tile
January/February	Complete Window Installation and Begin Storefront Installation
January/February	Complete Roofing
January/February	Begin Installation Of Casework
January/February	Permanent Power and Gas Connections

Project Contacts

Tim Cober

tcober@mdstad.com
410-218-0733

Renee Stainrod

rastainrod@bcps.k12.md.us

Alicia Thomas

athomas03@bcps.k12.md.us
443-240-2359

MCN Build/Southway Builders Project Team

Bill Beschorner

Project Executive

Tom Grubb

Project Manager

202-285-7403

Jared Blocher

Superintendent

202-257-9203

John Norton

Assistant Project Manager

Ed Wasilewski

Superintendent

202-340-4985

Questions?

21st Century School Buildings Program Office

www.baltimore21stcenturyschools.org
(443) 642-4600



21stCSBaltimore



21stCenturySchoolBuildingsProgram



21stCSBaltimore



Thank You.

This presentation was brought to you by the 21st Century School Buildings Program.

www.baltimore21stcenturyschools.org

21st Century School Buildings Program

Baltimore City Public Schools
200 East North Avenue Room 407-B
Baltimore MD 21202
(443) 642-4600

Dorothy Hellman

Executive Director, 21st Century Buildings Program
Baltimore City Public Schools

Gary McGuigan

Executive Vice President, Capital Development Division
Maryland Stadium Authority

Robert Gorrell

Executive Director, Public School Construction Program
State of Maryland

BALTIMORE CITY
PUBLIC SCHOOLS

