



# 21<sup>st</sup> Century School Buildings Plan

**SCHOOL** Govans Elementary School

**COMMUNITY MEETING** Concept Design | June 6, 2018



## Introductions

**Nicole Price**

Director, Community & Public Relations  
City Schools

**Tiara Moorman**

21<sup>st</sup> Century School Buildings Program  
Project Manager  
Maryland Stadium Authority

**Michael McBride**

Director of Design  
City Schools

**Tim Schell**

Project Manager  
USA Architects

**Carlos Tovar**

Project Architect  
USA Architects

## Agenda

**Conceptual Design Review**

**Duration of Design Phase**

**Project Schedule**

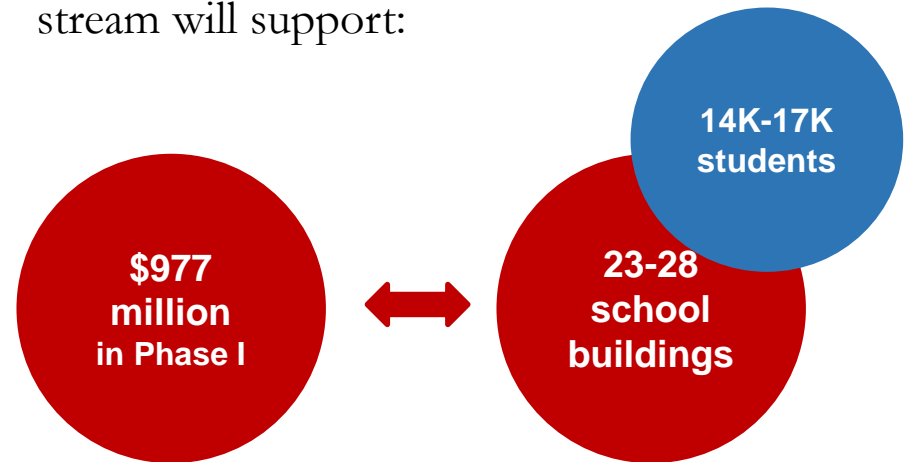
# 21<sup>st</sup> Century School Buildings Program

The Baltimore City Public School System (City Schools) Construction and Revitalization Act of 2013 resulted in a partnership between:

- The State of Maryland
- Baltimore City
- City Schools

*Each contribute \$20 million* annually towards the plan.

Current estimates suggest the funding stream will support:



City Schools' Plan is one of the largest public works project in Baltimore City to date.

## Investment in buildings, students and communities

**Overall the facilities revitalization project has three goals:**

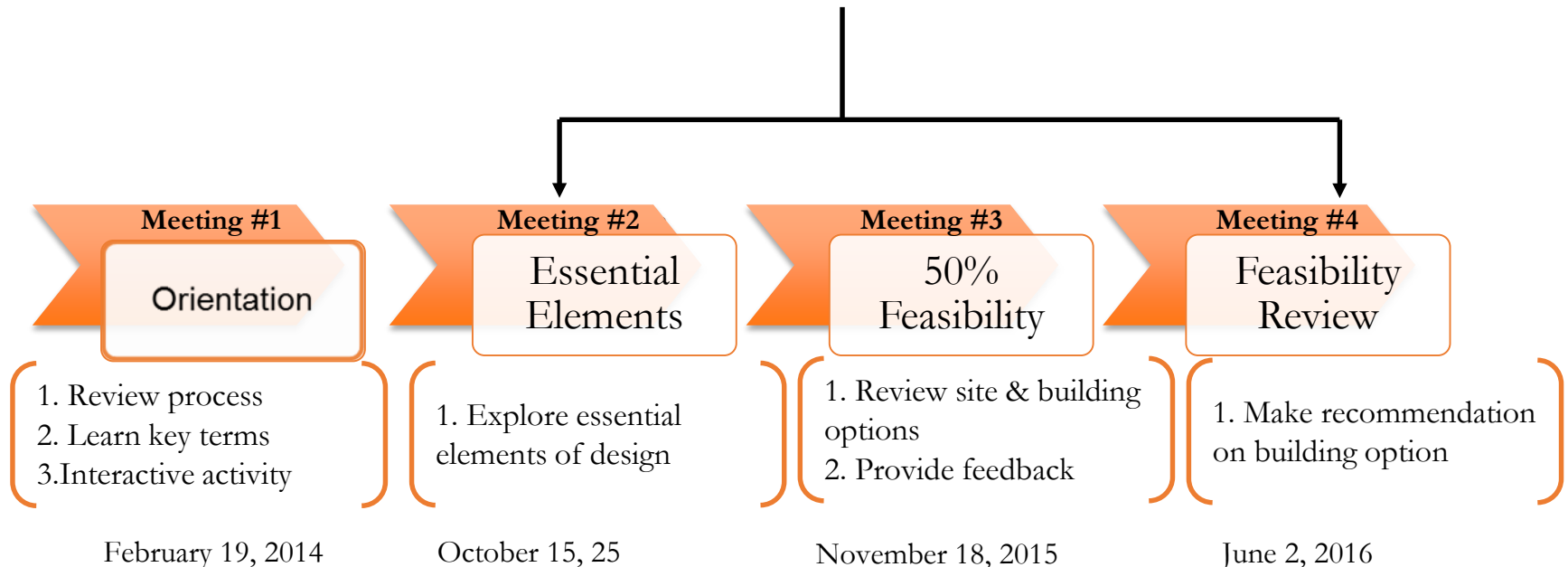
- (1) to transform student opportunities and achievement;
- (2) improve engagement and well-being of communities;
- (3) help revitalize neighborhoods and communities.

# Educational Specification & Feasibility Study



September 2015-March 2016

Planning: 6-8 Months







## Shift in Timeline: *Details of Activity*

February 19, 2015	October 15, 2015	November 18, 2015	June 2, 2016	???	Board Approval	Start of Design
Orientation	Essential Elements	50% Feasibility Study Meeting	95% Feasibility Study Meeting		July 2017	Fall/Winter 2017





## What we heard...

-  Students shouldn't have to walk by the service drive and loading dock as the first and last thing on their way to and from school
-  The outdoor play space is choppy
-  The location of the three story building shouldn't prevent neighbors from getting natural lighting
-  Increase on site-parking if possible

# Govans Summary of Spaces

(6) Classrooms for PreK and Kindergarten	(2) Music Rooms
(6) Classrooms for 1 <sup>st</sup> and 2 <sup>nd</sup> grades	(1) Art Room
(9) Classrooms for 3 <sup>rd</sup> , 4 <sup>th</sup> and 5 <sup>th</sup> grades	(3) Flex Classroom
(2) Special Education Classrooms	Media Center and Video Studio
(1) Early Learning Special Education	Cafeteria with Stage
(1) Elementary Science Lab	Gymnasium
(5) Collaborative Learning Area	Community Space
(1) Technology Education Lab	Administrative/Student Services



# Existing Site Plan



# Design Goals

## Connecting stakeholder voice

Bus drop-off area adjacent to secure main entrance

Integrate into the community



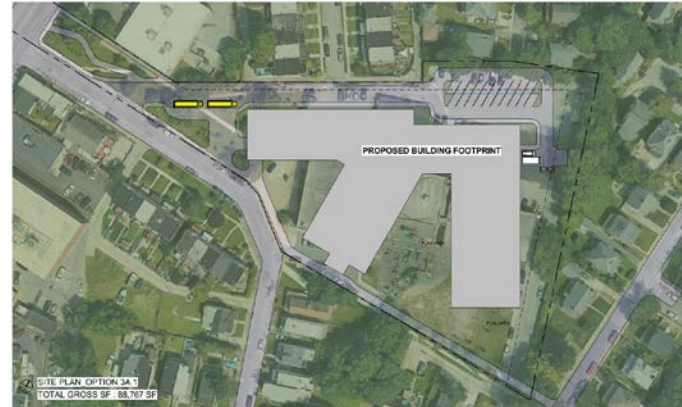
Daylight and views for all classroom, learning spaces

Building orientation for maximum efficiency and recreational outdoor space

Clear separation between community/public and academic wings



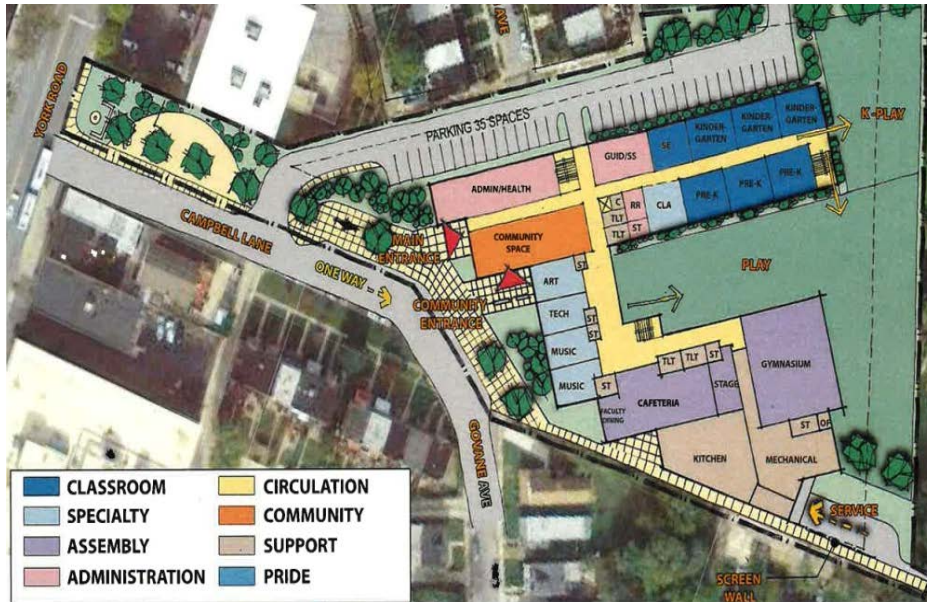
# Concepts Explored



Space Inefficiencies  
Too Small of Play Area  
Safety Concerns

Space Inefficiencies  
Program Inefficiencies

# Proposed Design by Feasibility Study



## PER FEASIBILITY STUDY

Loading Dock on Front Façade of Building

Lacking Bus Drop-off

Limited & Remote Play/Green Spaces

Community Space Not Adjacent to Cafeteria and Other Community Support Programs

Uses Parking Lot as Buffer to Community

## PROPOSED CONCEPT PLAN

Loading Dock Relocated to Rear of Building

Provided Bus Drop Off

Play Areas Visible to Community

Community Space Adjacent to Community Support Programs

Buffer Provided Between School & Community



# Proposed Site Plan



# Proposed First Floor Plan



# Proposed Second Floor Plan



⊗ SECOND FLOOR PLAN\_OPTION 3A  
24,597 SF

# Proposed Third Floor Plan



- 1 Visual Arts & Science**
- 2 4<sup>th</sup> & 5<sup>th</sup> Grade Classrooms**
- 3 Collaborative Spaces**

⊗ THIRD FLOOR PLAN\_OPTION 3A  
19,917 SF



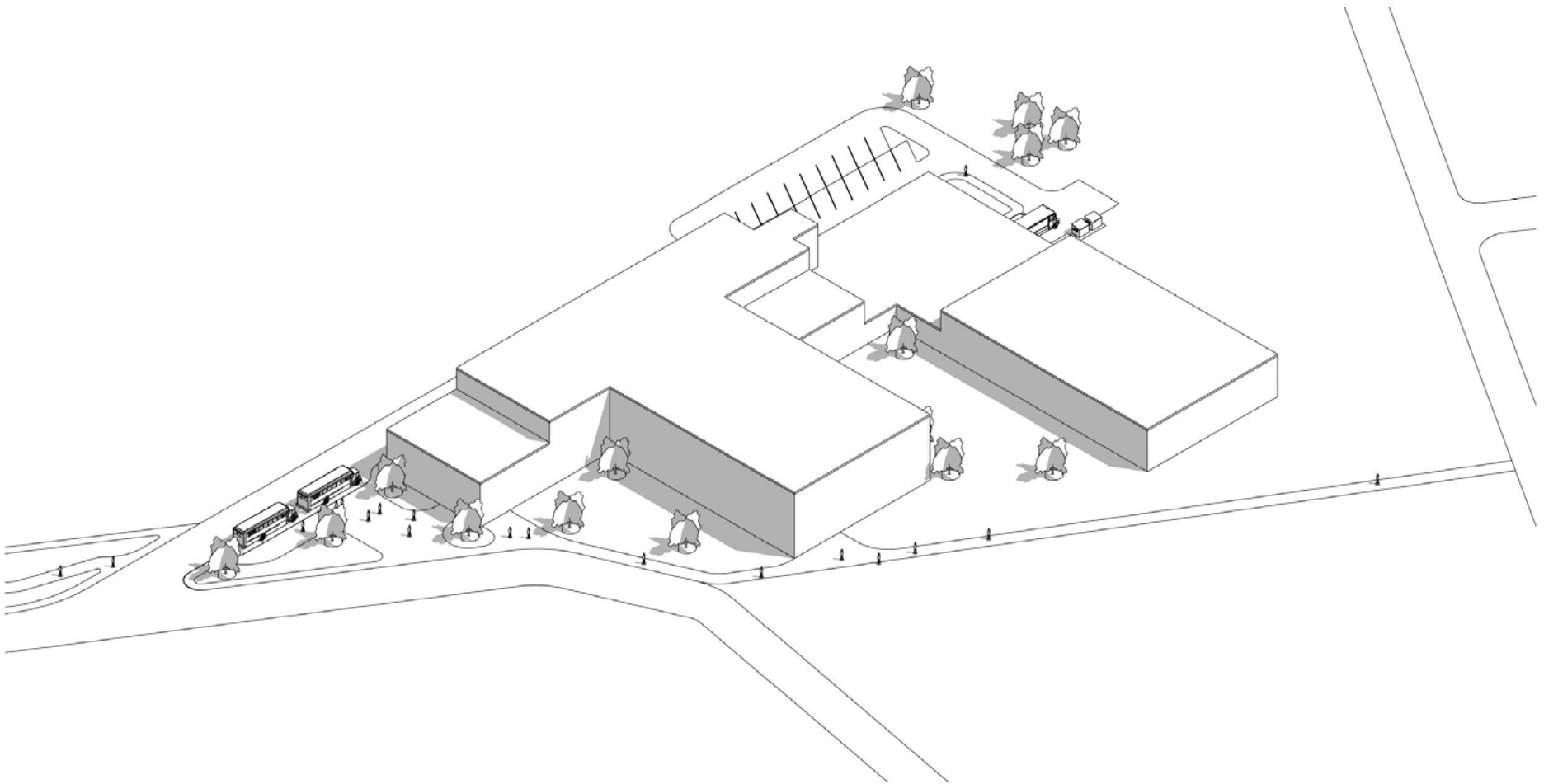
# Outdoor Teaching/Learning & Play Areas



1

Teaching/Learning & Play Areas

# Preliminary Massing Study



# Design

Planning : 6-8 months

Pre-Design: 2-4 months  
18-24 months

Design: 10-12 months



Summer 2018

Design: 10-12 Months

*Meeting #5*  
**Concept**  
6/6/2016



*Meeting #6*  
**Schematic**  
8/2018



*Meeting #7*  
**Design Development**  
11/2018



*Meeting #8*  
**Final Drawings**  
5/2019



# Questions?

## CONTACTS

Nicole Price

[nprice@bcps.k12.md.us](mailto:nprice@bcps.k12.md.us)

**21<sup>st</sup> Century School Buildings**

**Program Office**

**(443) 642-4600**

**[www.baltimore21stcenturyschools.org](http://www.baltimore21stcenturyschools.org)**



**Instagram**

**@21stCSBaltimore**

**Twitter**

**@21stCSBaltimore**

**Facebook**

**@21stCenturySchoolBuildingsProgram**

Thank You!



This presentation is brought to you by the  
21<sup>st</sup> Century School Buildings Program.

[www.baltimore21stcenturyschools.org](http://www.baltimore21stcenturyschools.org)

**21st Century School Buildings Program**

Baltimore City Public Schools  
200 East North Avenue Room 407-B  
Baltimore MD 21202  
(443) 642-4600

**Mignon R. Anthony**

Executive Director, 21st Century Buildings Program  
Baltimore City Public Schools

**Gary McGuigan**

Senior Vice President, Capital Development Division  
Maryland Stadium Authority

**James T. Smith, Jr.**

Chief of Strategic Alliances  
City of Baltimore

**Robert Gorrell**

Executive Director, Public School Construction Program  
State of Maryland

BALTIMORE CITY  
PUBLIC SCHOOLS

