



21st Century School Buildings Program

Commodore John Rodgers Elementary/Middle School
COMMUNITY MEETING NO. 4 – CONSTRUCTION DOCUMENTS
May 30, 2024

Presenters	Agenda
<p>Anthony Pena Acting Director Community Engagement and Public Relations 21st Century School Buildings Program</p> <p>Ivy McNeill Senior Program Coordinator Community and Engagement 21st Century School Buildings Program</p> <p>Fred Mason Design Director 21st Century School Buildings Program</p> <p>Rick LeBlanc/Todd Vukmanic Architect Crabtree Rohrbaugh & Associates</p>	<ul style="list-style-type: none"> • Introductions • Design Goals • Site Plan • Floor Plans • Typical Layouts • Renderings • Project Schedule



Replacement for Commodore John Rodgers Pre-K/8 Elementary/Middle School

- 1,029 design capacity
- Consolidate main entrance and parking with separate bus and vehicular access
- Create secure and contained play areas for Pre-K, Kindergarten and Grades 1-8
- Promote safety and security through design
- Enhanced security with the ability to secure the academic wings during public/community use
- Daylight/views for all learning spaces
- Sustainable design – LEED Silver Certification
- Create dynamic learning environments through use of color, materials and patterns
- Durable, cost-effective materials to enhance life cycle costs



Site Features

- Main entrance on N. Washington Ave. – provides bus and vehicular access at main entrance location
- Secure play area from northeast neighborhood at N. Chester Street

Safety & Security

- Defined main entrance at bus and parent drop-off
- Three separate and secured play areas
- Dedicated staff, visitor, and community parking totaling 34 spaces

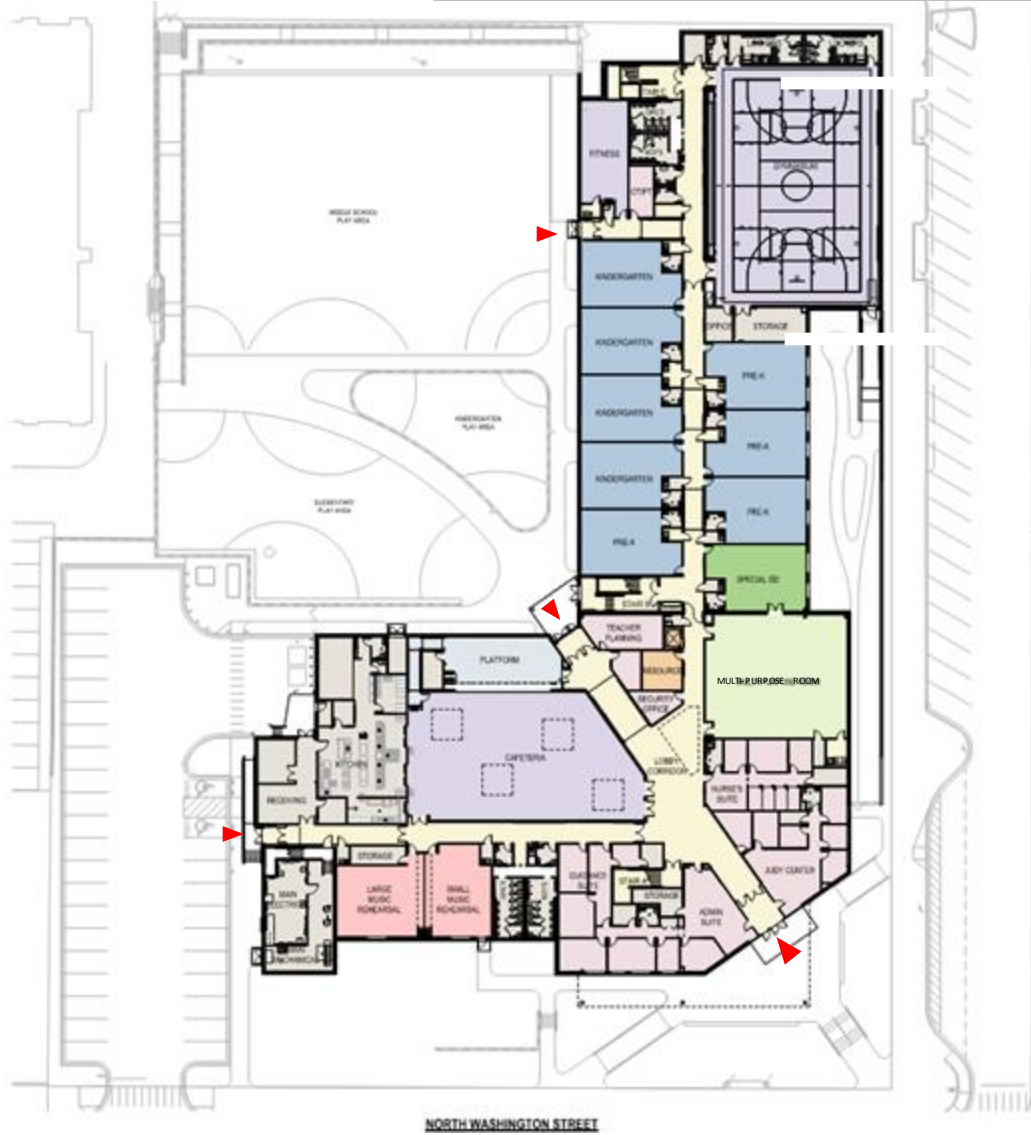
Site Opportunities

- Re-oriented building and site to optimize use of available space

Pedestrian Circulation & Community Connectivity

- Main entrance and parking provide access to all community support spaces.





- Pre-K-Kindergarten grades
- Special education classroom
- Music classrooms
- Multi-Purpose Room
- Gym/Fitness and support spaces
- Cafetorium/Platform
- Teacher Planning
- Administration
- Guidance
- Health suite
- Family resource room
- Judy Center

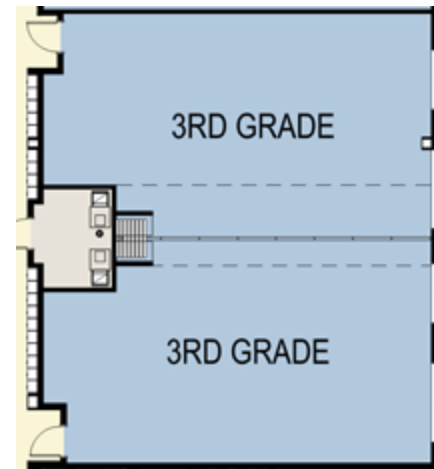


First Floor GSF: 53,43 SF
Overall SF: 118,073 SF

Commodore John Rodgers EMS
Community Meeting No 4.
Construction Documents Presentation
May 30, 2024

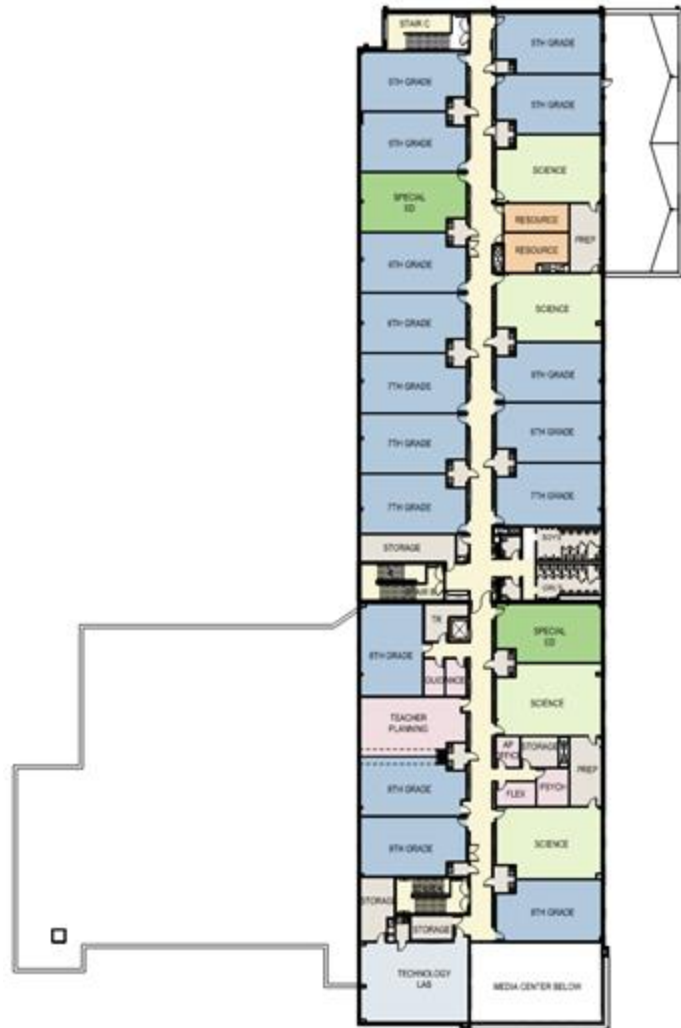


- Grades 1-4
- Special education classroom
- Speech
- Art classrooms
- Media center/Video room
- Flexible Classroom opportunity

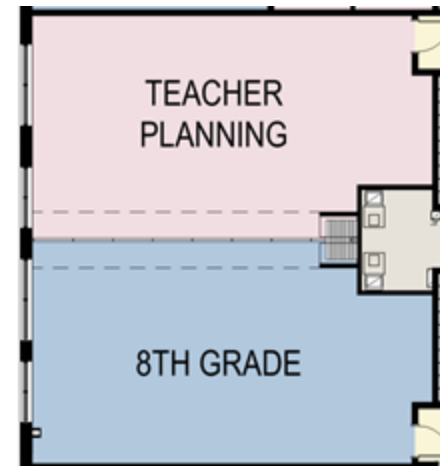


Second Floor GSF: 31,858 SF
 Overall SF: 118,073 SF

Commodore John Rodgers EMS
 Community Meeting No 4.
 Construction Documents Presentation
 May 30, 2024



- Grades 5-8
- Special education classrooms
- Science classrooms
- Technology lab
- Resource rooms
- Flexible Teacher Planning

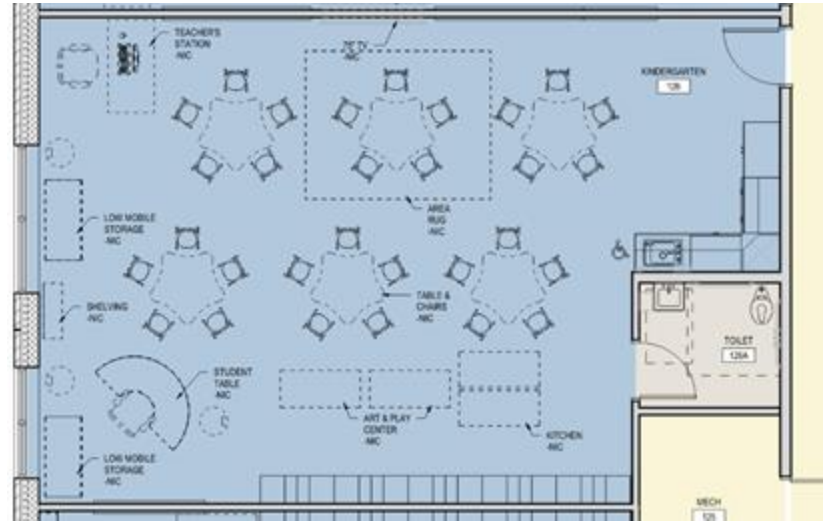


Third Floor GSF: 32,802 SF
Overall SF: 118,073 SF

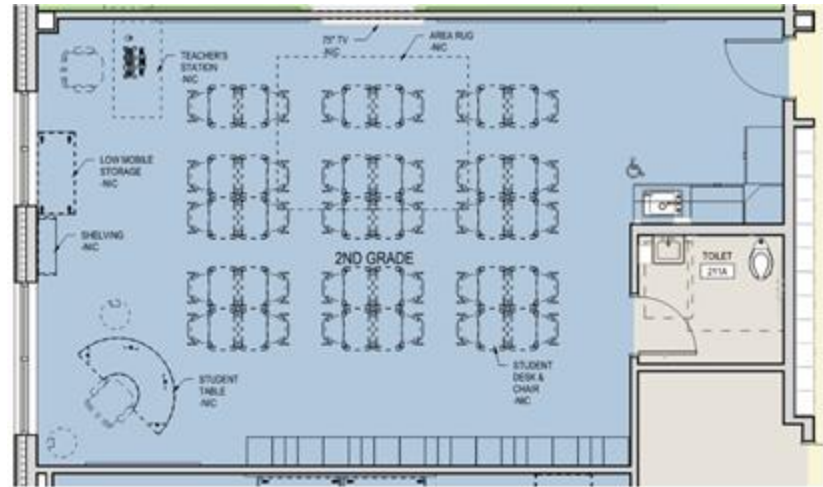
Commodore John Rodgers EMS
Community Meeting No 4.
Construction Documents Presentation
May 30, 2024



BAY BROOK ES/MS CLASSROOM



MONTEBELLO ES/MS CLASSROOM

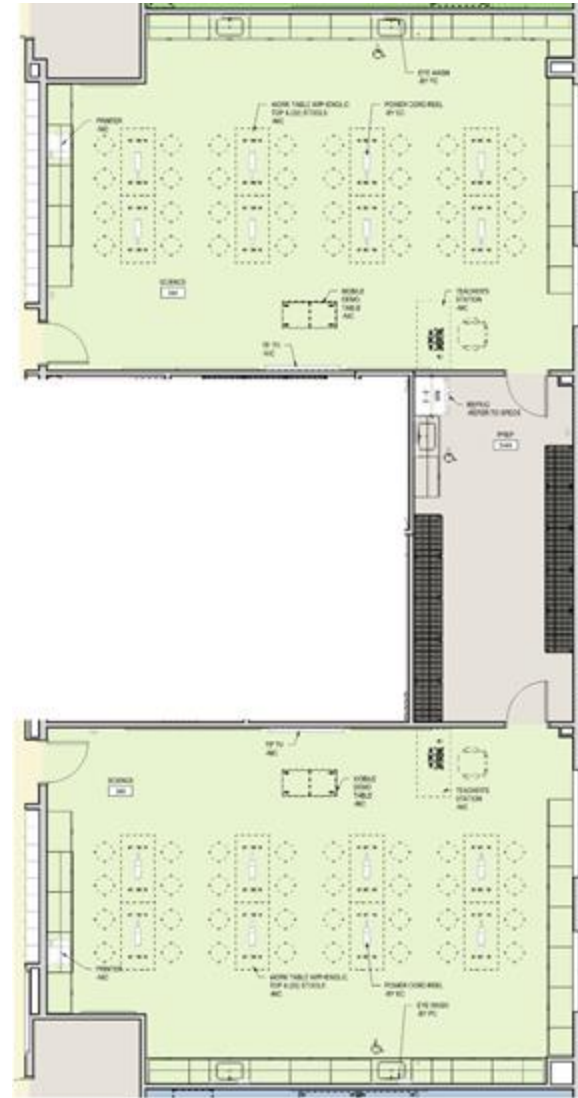




BAY BROOK ES/MS SCIENCE CLASSROOM



BAY BROOK ES/MS SCIENCE CLASSROOM



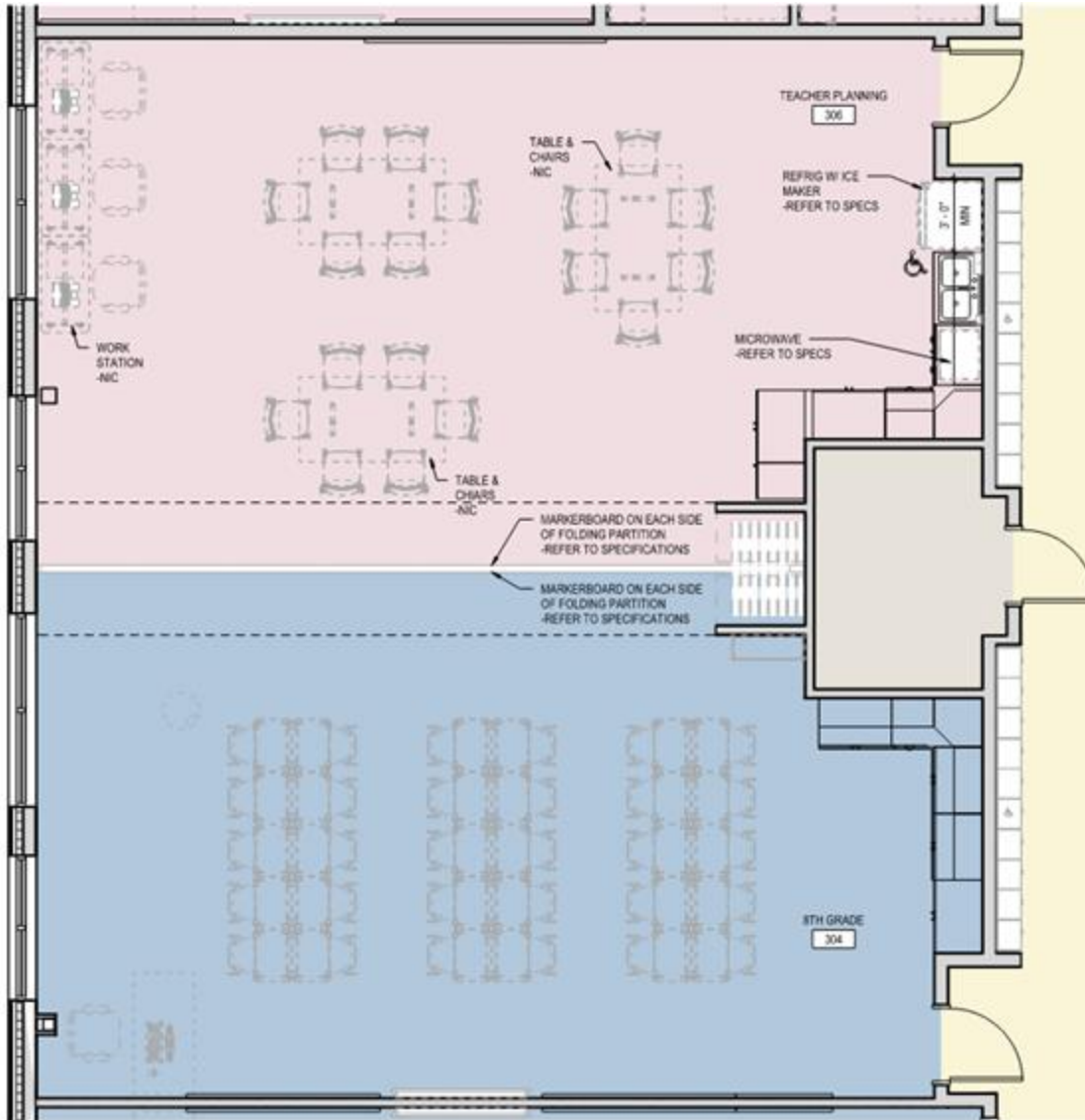


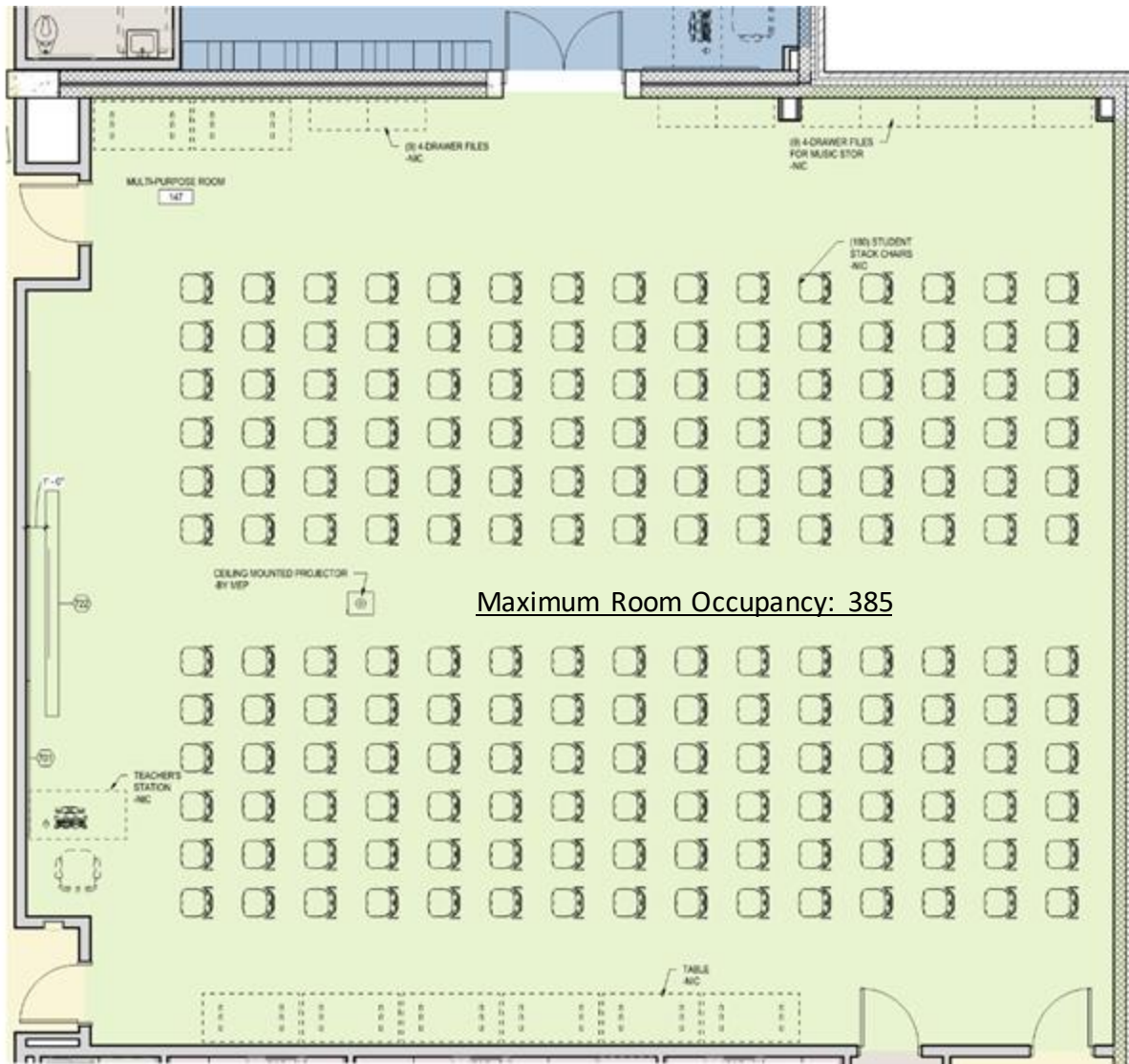
BAY BROOK ES/MS ART CLASSROOM



BAY BROOK ES/MS ART CLASSROOM





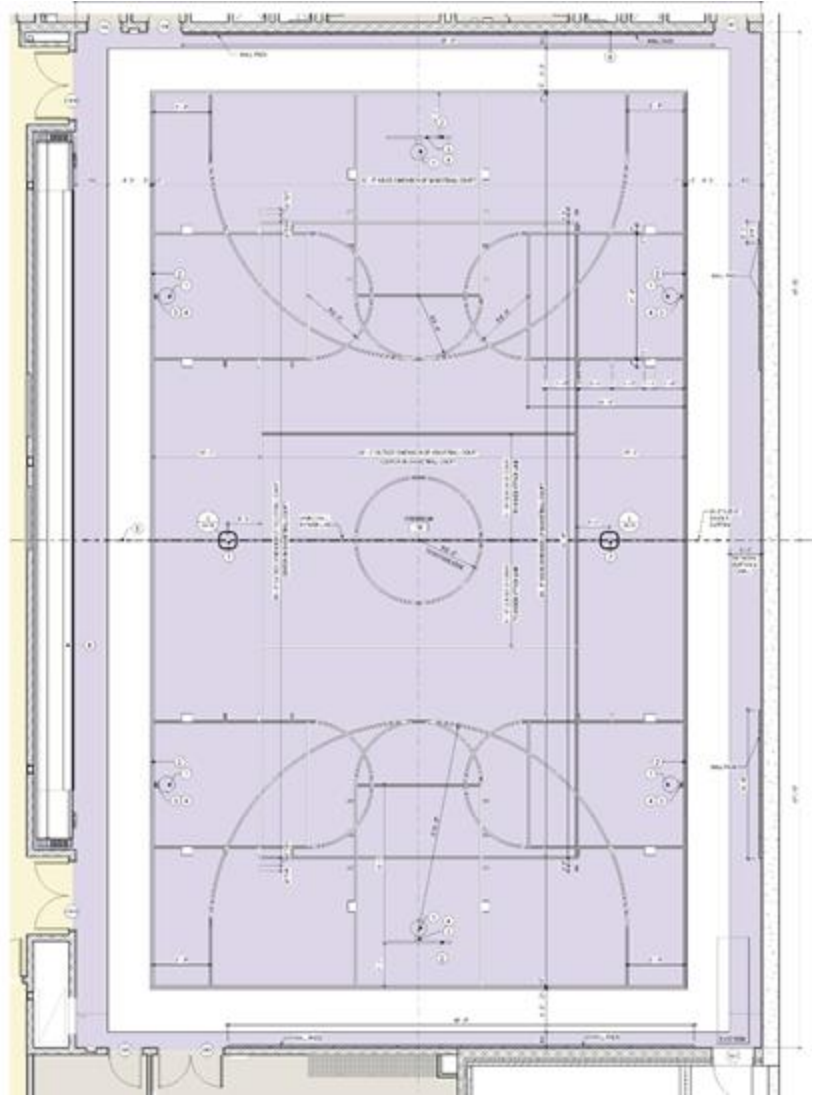




WALTER P CARTER ES/MS GYMNASIUM



FORT WORTHINGTON ES GYMNASIUM









Commodore John Rodgers EMS
Community Meeting No 4.
Construction Documents Presentation
May 30, 2024



CR





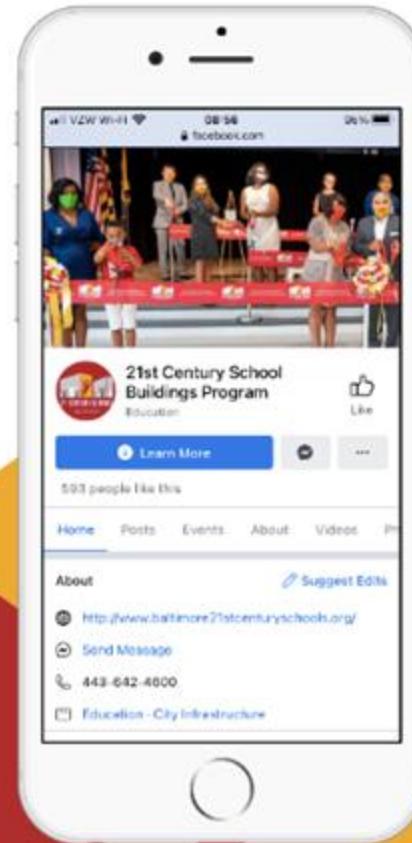




Schematic Design:	Winter 2022/Spring 2023*
Design Development:	Fall 2023*
Construction Documents:	Spring 2024*
Bidding:	Spring 2024*
Early Demolition:	Spring 2024*
Building Construction Start:	Summer 2024*
Substantial Completion:	November 2026*
Occupancy:	December 2026*

** Dates listed are based on a projected schedule and are subject to change.*

www.baltimore21stcenturyschools.org @21stCenturySchoolBuildingProgram



Questions?

Program Contacts

Sr. Community & Public Relations Coordinator

Ivy McNeill

idmcneill01@bcps.k12.md.us

Director Community Engagement &

Public Relations

Anthony Pena

apena@bcps.k12.md.us

Program Information

21st Century School Buildings Program Office

(443) 642-4600

www.baltimore21stcenturyschools.org

Baltimore City Public Schools

200 East North Avenue Room 407-B

Baltimore MD 21202

(443) 642-4600

Thank You.

This presentation was brought to you by the Baltimore City Schools Operations Department.

