



21st Century School Buildings Program

Frederick Douglass High School & Joseph C. Briscoe Academy

COMMUNITY MEETING: Construction Update #5

January 21, 2026

Community Meeting: Construction Update | Frederick Douglass – Briscoe | January 21, 2026
baltimore21stcenturyschools.org

BALTIMORE CITY
PUBLIC SCHOOLS



Welcome and Introductions

Cyndi Smith

Executive Director, Facilities Planning, Design & Construction
City Schools

TaMikka Sykes

Director, Community Engagement & Strategic Partnerships
City Schools

Ivy McNeill & Alicia Thomas

Sr. Program Managers, Community Engagement
City Schools

Fred Mason

Design Director, Operations
City Schools

Tyler Dumont

21st Century School Buildings Program
Project Manager
Maryland Stadium Authority

Chad Carter

21st Century School Buildings Program
Assistant Project Manager
Maryland Stadium Authority

Josh Stewart

Project Manager
Dustin Construction

Agenda

Overview & Introductions**Final Design (Recap)**

- . Site Design
- . Exterior Design
- . Interior Design

Construction Overview

- . Community & Site Security
- . Site Utilization Plan
- . Construction Progress Updates
- . Project Schedule & Upcoming Milestones

Questions and Feedback

Frederick Douglass and Joseph C. Briscoe Project: Where We Are Now



Community Meeting Construction Update #4 (May 28th)

The construction team provided a recap of final design, reported site safety and security measures, and shared construction site progress photos.



Post Meeting Engagement and Follow-Up (June 2025 – January 2026)

- Continued check-ins and problem-solving with school leaders
- Collected and shared ongoing stakeholder feedback
- Started planning for the dual ribbon-cutting scheduled for August 2026



Construction Update Meeting (January 21st)

Today, the team will share construction updates with Frederick Douglass and Joseph C. Briscoe stakeholders.

Frederick Douglass High School Renovation and Modernization Project

249,393

Building Gross Square Footage

1,214

Douglass Student
Capacity

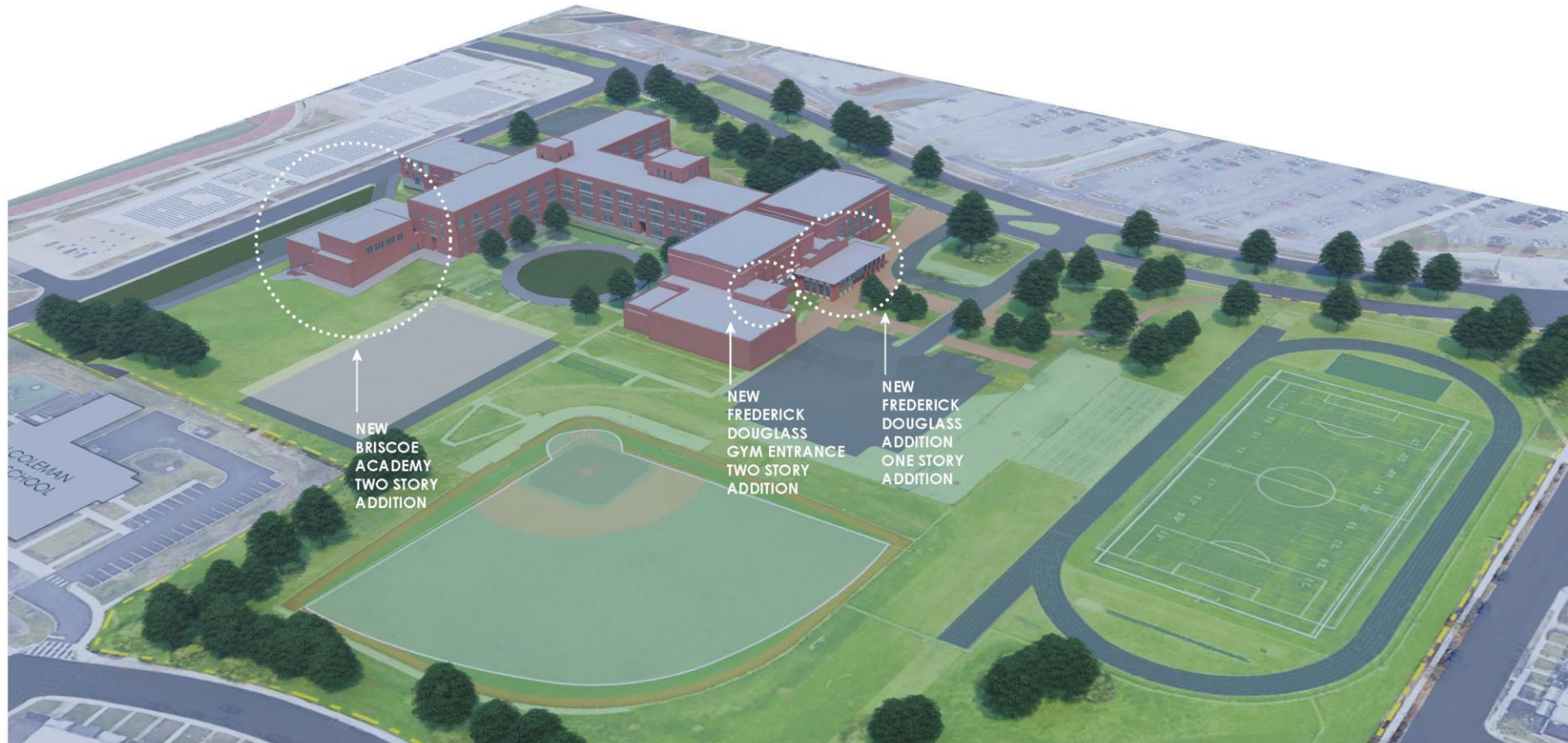
110

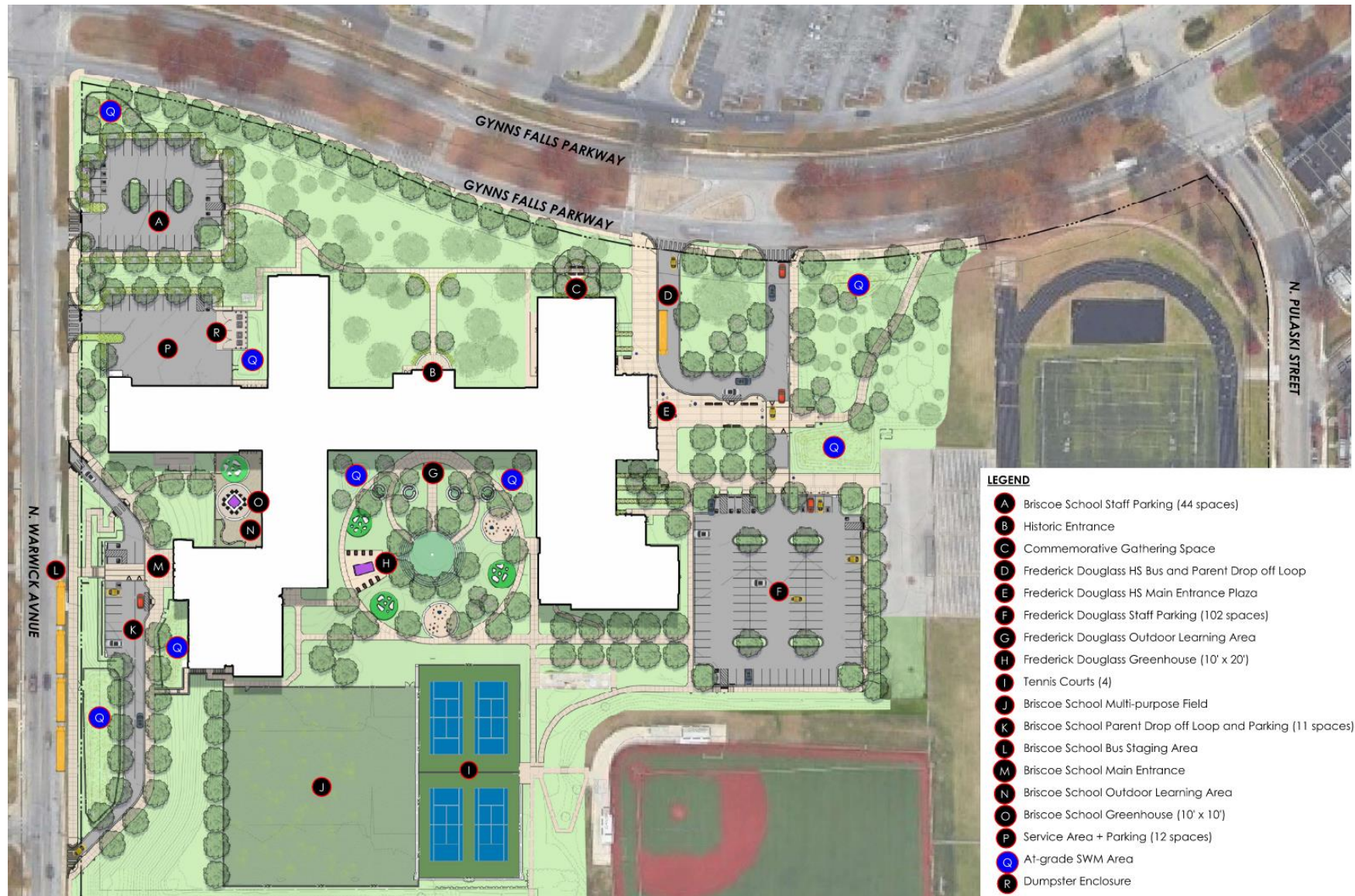
Briscoe Student
Capacity

The building project includes three additions:

- One part housing for Briscoe Academy
- A new Douglass school entrance
- A new Douglass gym entrance







DESIGN RECAP

Proposed Ground Floor

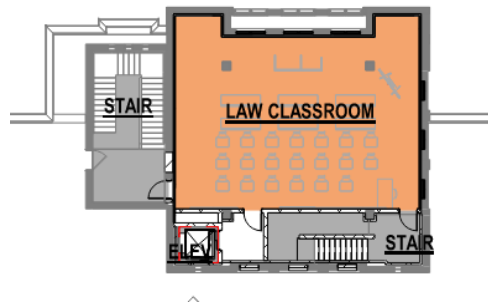






DESIGN RECAP

Proposed Third Floor Plan



Fourth Floor Plan



- ADMINISTRATION
- STUDENT SERVICES
- HEALTH SUITE
- CLASSROOMS
- CLASSROOM SUPPORT
- SPECIAL EDUCATION
- SCIENCE
- VISUAL ART
- MUSIC
- CTE
- PHYSICAL EDUCATION
- MEDIA CENTER
- FOOD SERVICES
- BUILDING SERVICE
- COMMUNITY



The new Frederick Douglass entrance is one of three project additions.



The new Frederick Douglass gymnasium entrance is one of three project additions.



The Joseph C. Briscoe addition entrance is one of three project additions.

**Safety of all is paramount**

- Security Fencing
- Cameras and monitoring systems
- After-hours security guards

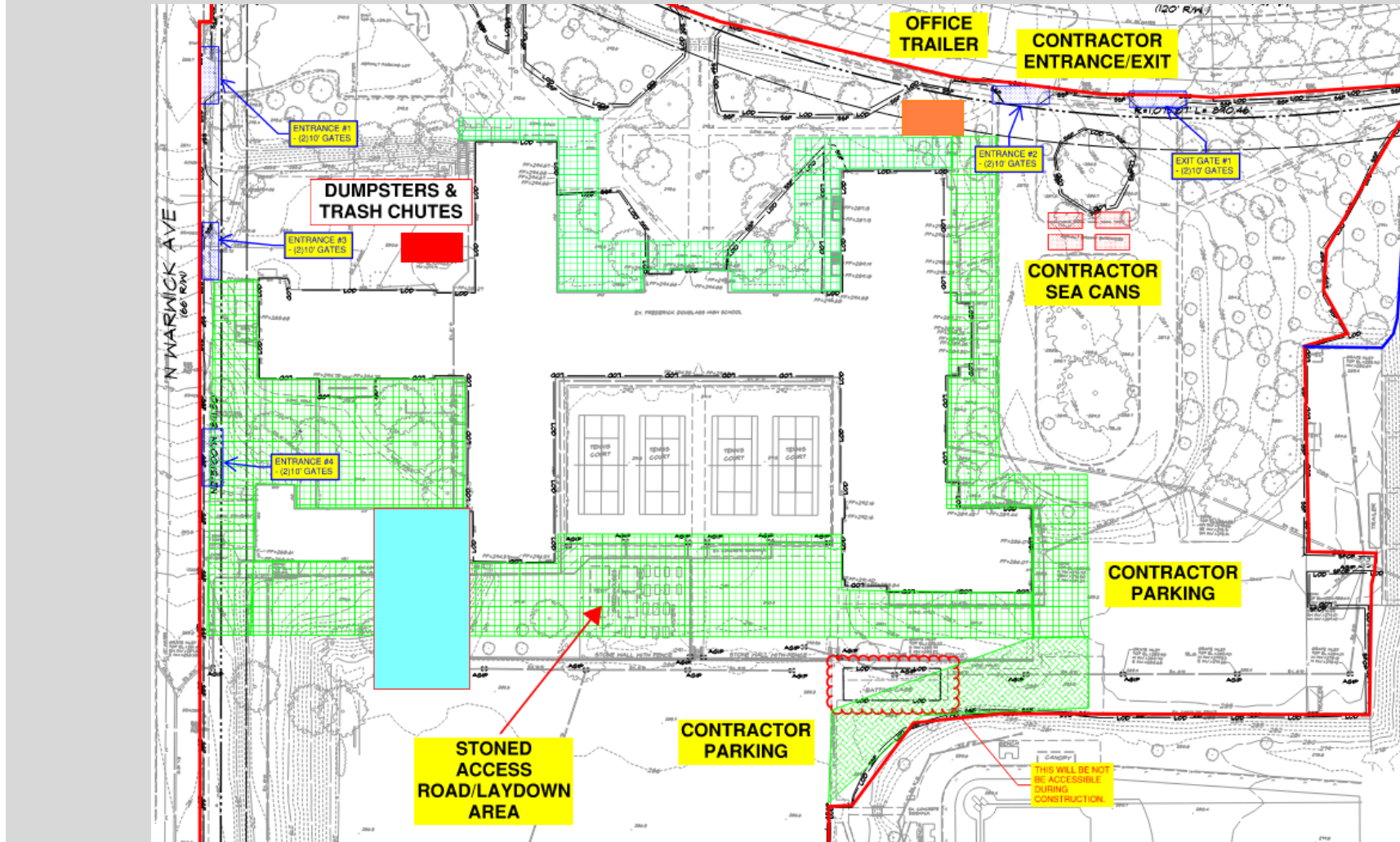
Being a good neighbor

- On-site cleanliness trash removal
- Wash racks at construction entrances

Environmental controls

- Sediment control and runoff management
- Silt fencing and erosion controls

Standard Work Hours | Monday – Friday | 6:30 a.m. – 4p.m.



Traffic and deliveries will enter or exit jobsite at both N. Warwick Ave. and Gwynns Falls Parkway.





BEFORE



NOW

VIEW FROM SOUTHWEST CORNER OF SITE



BEFORE



NOW

VIEW FROM SOUTH SHOWING BRISCOE ADDITION



BEFORE



NOW

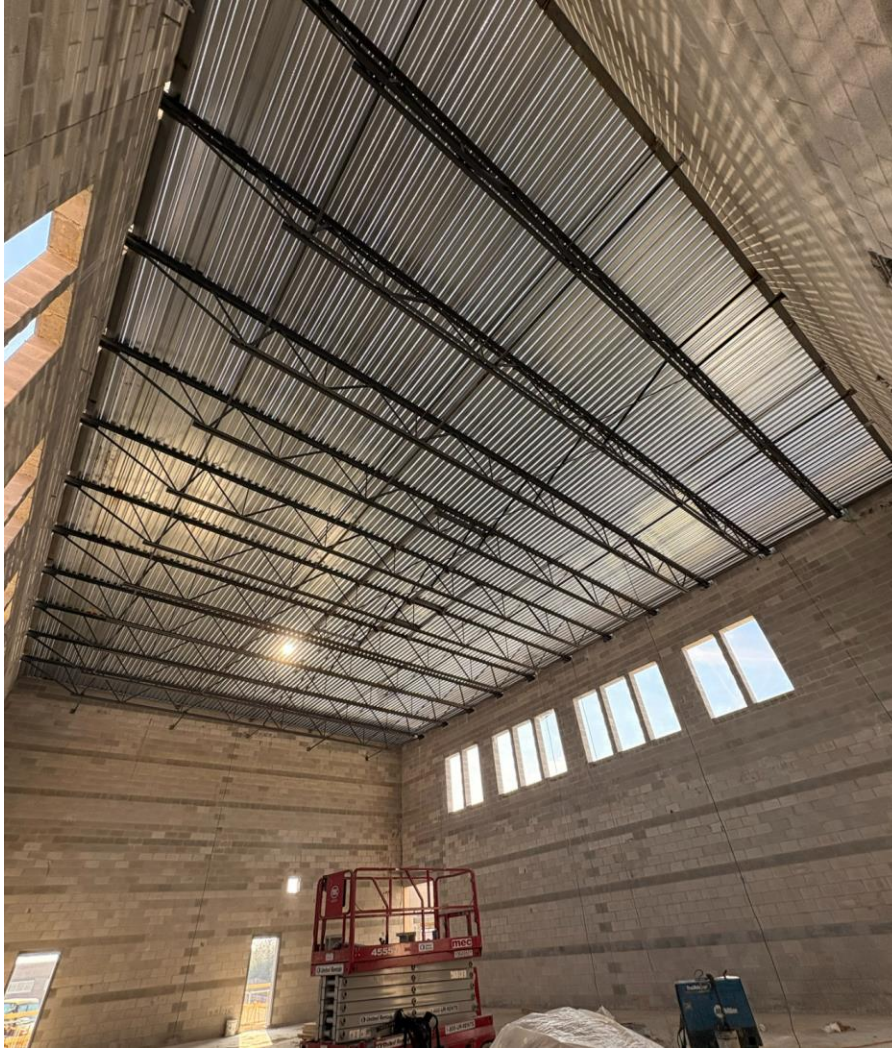
VIEW FROM SOUTH



CLASSROOM



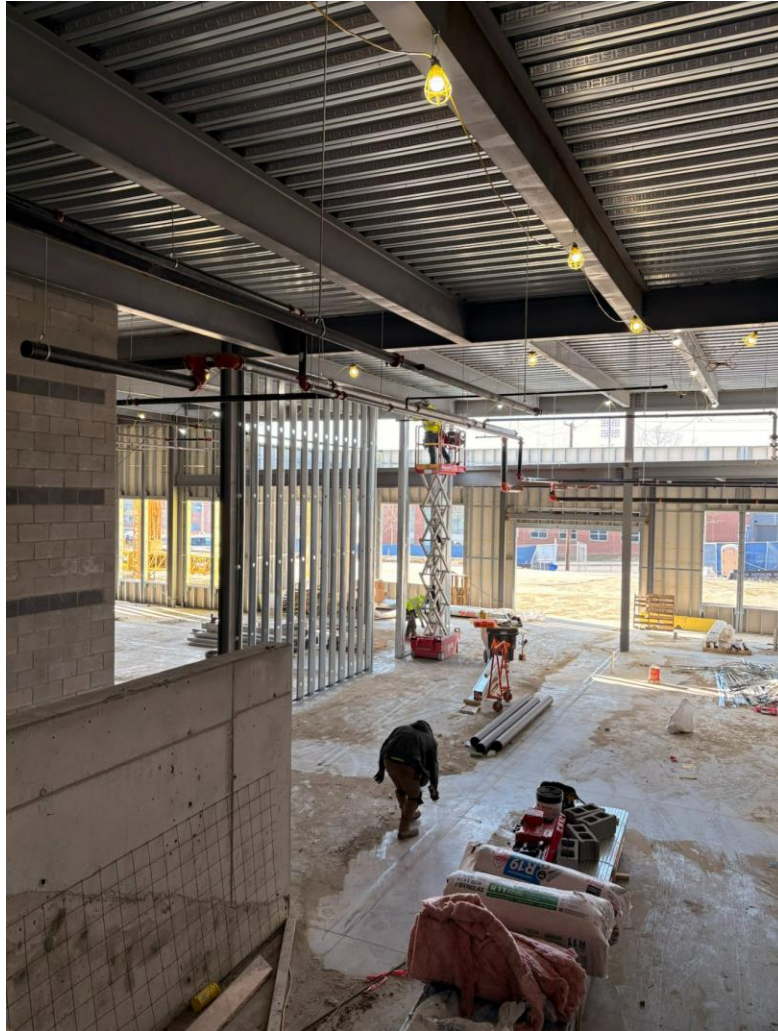
RESTROOM



BRISCOE GYM



CORRIDOR



BRISCOE GROUND FLOOR



NORTHWEST PARKING LOT



BRISCOE EXTERIOR



BRISCOE ENTRANCE

Project Schedule: Milestones

MEPS Rough-ins.....	ongoing
Interior/Exterior Framing.....	ongoing
Earthwork/Utilities.....	ongoing
Interior Masonry.....	ongoing
Site Concrete.....	ongoing
Structural Steel.....	wrapping up
Casework.....	end of January
Flooring.....	February

**Take 3 minutes to share Your
Feedback!**



**Scan the QR code to complete the
post-meeting survey.**

Questions & Answers



Site Parking

What we're hearing

- Staff members have shared concerns about limited parking.

What will not change

- Due to **site size, zoning requirements, and surrounding neighborhood conditions**, adding parking spaces is **not feasible now or in the future**.

How we will support

- Strengthening communication and coordination to support school and community-based problem-solving
- Gather and share feedback with school leadership and the community to refine operational solutions

City Schools is committed to an open and inclusive process.

If you have questions, comments, or feedback, please contact the 21st Century and Built to Learn Engagement Team or visit www.baltimorecityschools.org/page/capital-projects.

Alicia Thomas, Sr. Program Manager

athomas03@bcps.k12.md.us

Ivy D. McNeill, Sr. Program Manager

idmcneill01@bcps.k12.md.us

TaMikka C. Sykes, Director

tcsykes@bcps.k12.md.us

Construction Site Safety Concerns:

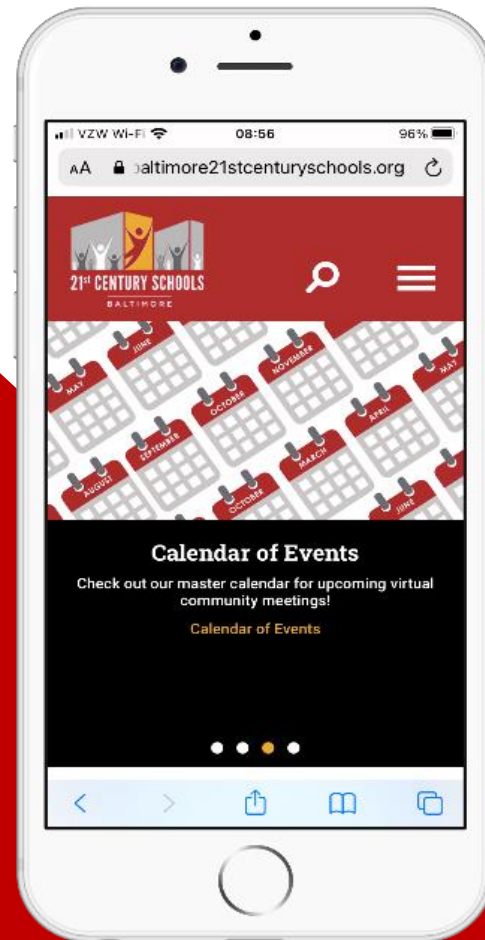
Josh Stewart, Dustin Construction

jstewart@davisconstruction.com.



City Schools engagement page is under construction

WEBSITE

**baltimore21stcenturyschools.org**

SOCIAL MEDIA

**@21stCenturySchoolBuildingsProgram**



Thank You.

This presentation was brought to you by the 21st Century School Buildings Program.

www.baltimore21stcenturyschools.org

Baltimore City Public Schools

200 East North Avenue
Baltimore MD 21202
(443) 642-4600

**BALTIMORE CITY
PUBLIC SCHOOLS**

