

BALTIMORE CITY PUBLIC SCHOOLS EDUCATIONAL SPECIFICATIONS

PART 3: SITE SPECIFIC EDUCATIONAL SPECIFICATIONS

FAIRMOUNT-HARFORD BLDG #456

NOVEMBER 2017



PREPARED BY: CITY SCHOOLS STAFF

IMAGE CREDIT: GRIMM AND PARKER INC.

BALTIMORE CITY BOARD OF SCHOOL COMMISSIONERS

Cheryl A. Casciani

Chair

Peter Kannam

Vice-Chair

Muriel Berkeley

Commissioner

Michelle Harris Bondima

Commissioner

Linda Chinnia

Commissioner

Marnell Cooper

Commissioner

Martha James-Hassan

Commissioner

Andrew Frank

Commissioner

Tina Hike-Hubbard

Commissioner

Ashley Peña

Student Commissioner

BALTIMORE CITY PUBLIC SCHOOLS DISTRICT OFFICE

Office of Engagement

Office of Networks

Chief Academic Office

Chief Operations Office

Office of New Initiatives

21st Century School Buildings

BALTIMORE CITY SCHOOL COMMUNITY

- *Principal and Staff of REACH! Partnership School*
- *Community and Partners of REACH! Partnership School*
- *Parents and Students of REACH! Partnership School*

BALTIMORE CITY ACKNOWLEDGEMENTS

Dr. Sonja Brookins Santelises

Chief Executive Officer

Sean Conley

Chief Academic Officer

Alison Perkins-Cohen

Chief of Staff

J. Keith Scroggins

Chief Operations Officer

John Walker

Interim Chief Financial Officer

Jeremy Grant-Skinner

Chief Human Capital Officer

John L. Davis, Jr.

Chief of Schools

PART 3

SITE-SPECIFIC EDUCATIONAL SPECIFICATIONS SECTIONS

Part 1: General Requirements (under separate cover)

- A. Executive Summary
- B. City Schools' Mission
- C. City Schools' Portfolio
- D. School Safety and Security
- E. Community Use Guidelines
- F. Sustainability
- G. Instructional Technology
- H. General Design Criteria
- I. Building Design Criteria
- J. Site Design Criteria
- K. Project Specific Educational Specifications
- L. Additional Educational Specification Content

Part 2: Prototype Specific Requirements (under separate cover)

Volume I PK to 5 Prototype

Volume II PK to 8 Prototype

Volume III 6 to 12 Prototype

Volume IV 9 to 12 Prototype

Part 3: Site Specific Educational Specifications (General Requirements)

A.	Project Summary	1
B.	Project Background	4
C.	Project Educational Programs and Services	9
D.	General Project Design Criteria (Optional)	-
E.	Existing Site Conditions (Optional)	-
F.	Proposed Site Requirements	14
G.	Existing Building Systems Conditions (Optional)	-
H.	Proposed Building Systems Requirements (Optional)	-
I.	General School Design Criteria (Optional)	17
J.	Individual Space Descriptions	19
K.	Graphic Summary of Spatial Relationships (Optional)	-
L.	Summary of Spatial Requirements	35
M.	Appendix	40

SITE SPECIFIC EDUCATIONAL SPECIFICATIONS

TABLE OF CONTENTS

A. PROJECT SUMMARY.....1	J. INDIVIDUAL SPACE DESCRIPTIONS.....18
1. PROJECT JUSTIFICATION	1. NAME OF SPACE
2. PROJECT DESCRIPTION	2. PROPOSED ACTIVITIES
3. PROPOSED SCHEDULE	3. NUMBER/TYPE/GROUPINGS OF USERS
4. FACILITY SUMMARY	4. AREA, HEIGHT, VOLUME REQUIREMENTS
5. LOCATION MAP	5. RELATIONSHIPS TO OTHER SPACES
	6. STORAGE REQUIREMENTS
B. PROJECT BACKGROUND.....4	7. DISPLAY AND PROJECTIONS REQUIREMENTS
1. COMMUNITY DESCRIPTION AND HISTORY	8. PROPOSED FURNITURE AND EQUIPMENT
2. SCHOOL DESCRIPTION AND HISTORY	9. ACOUSTICAL REQUIREMENTS
3. EXISTING SITE PLANS, FLOOR PLANS, AND PHOTOGRAPHS	10. FLOOR, WALL, CEILING FINISHES
4. SUMMARY OF RECENT FEASIBILITY STUDIES OR ASSESSMENTS	11. MECHANICAL, ELECTRICAL, PLUMBING REQUIREMENTS
	12. SPECIAL SYSTEMS
C. PROPOSED EDUCATIONAL PROGRAMS AND SERVICES.....9	13. TELECOMMUNICATIONS SYSTEMS
1. SCHOOL GRADE ORGANIZATION	L. SUMMARY OF SPATIAL REQUIREMENTS.....38
2. PROPOSED CURRICULUM AND INSTRUCTIONAL METHODS AND TRENDS	1. NAME OF SPACE
3. PROPOSED STAFFING	2. EXISTING/PROPOSED QUANTITY
4. ENROLLMENT PROJECTIONS	3. EXISTING/PROGRAMMED AREA OF BUILDING IN NET SQUARE FEET
5. FUTURE PROGRAMS AND SERVICES	4. TOTAL EXISTING/PROGRAMMED AREA OF BUILDING IN NET SQUARE FEET
F. PROPOSED SITE REQUIREMENTS.....13	5. EXISTING/PROPOSED BUILDING EFFICIENCY (NSF/GSF)
1. PARKING — BUS, CAR, DELIVERY, SERVICE, STAFF, VISITOR	6. TOTAL EXISTING/PROPOSED BUILDING AREA IN GROSS SQUARE FEET
2. SERVICE ACCESS	M. APPENDIX.....43
3. VEHICLE AND PEDESTRIAN ACCESS	1. EXISTING SITE AND FLOOR PLANS
4. PLAYING FIELDS/COURTS/YARDS	
5. NATURAL ENVIRONMENTAL AREAS	
6. UTILITIES	
7. OTHERS	
I. GENERAL SCHOOL DESIGN CRITERIA.....16	
1. SPECIAL OR UNIQUE PROGRAMS REQUIREMENTS	

*Sections not included are provided in the school specific feasibility study.

A. PROJECT SUMMARY

A. PROJECT SUMMARY

A.1 Project Justification:

This 21st Century School Buildings project originally proposed work on the Lake Clifton Building #40. After analysis of the Lake Clifton Building, it was determined the Fairmount-Harford Building is a more appropriate building for improvement and placement of The Reach! Partnership School #341. Lake Clifton has major structural concerns since it is located on an area that was previously a lake, and any replacement would have faced the same concern. The building also far exceeds the amount of space needed by REACH! and building operations and maintenance budgets would have been excessively high. The Fairmount-Harford Building is an ideal alternative as it is close in proximity and more appropriately sized for REACH!; it is structurally sound, and is a better solution despite its shortcomings. The Fairmount-Harford HS Building #456 currently has a poor Facility Conditions Index (FCI of 85%) and Educational Adequacy Scores (EAS of 50) based on the previously completed 2010 Jacobs building assessment report. The project is planned to be complete by summer of 2019. In SY 2025-26 the anticipated state rated capacity of the building will be 870 and its projected utilization rate will be 66% (based on the updated SRC and 2017 CEFMP projections). The project is planned to be complete by summer of 2019. In SY 2025-26 the anticipated state rated capacity of the building will be 870 and its projected utilization rate will be 66% (based on the updated SRC and 2017 CEFMP projections). As a renovation project of a building of historical significance we are limited to the current footprint (we cannot decrease our square footage, and the only addition will be a high school-sized gym). Additionally, the district continues to adjust our capacity at the secondary level through the portfolio review process; this central location will support these continued efforts.

A.2 Project Description:

The Fairmount-Harford Building is currently 167,913 square feet and was built in 1924. The existing building (which doesn't have a high-school sized gym) exceeds the square footage proposed in the site-specific space summary in the Part III, Section L of this submission. The proposed square footage (144,865 sf) would be possible if it were a replacement option; since it isn't, and we have an inefficient undesignated historic building with a very large auditorium, a 15,000 sf unusable crawl space, and no high school-sized gym, the final building is going to exceed the square footage in the Educational Specifications. The design will focus on making the existing building more efficient while accommodating the needs of 21st century learning. For the development of the site specific educational specification the mid-sized 9-12 prototype for a high school was used as the standard (starts at 806 + CTE spaces is appx. 900 students).

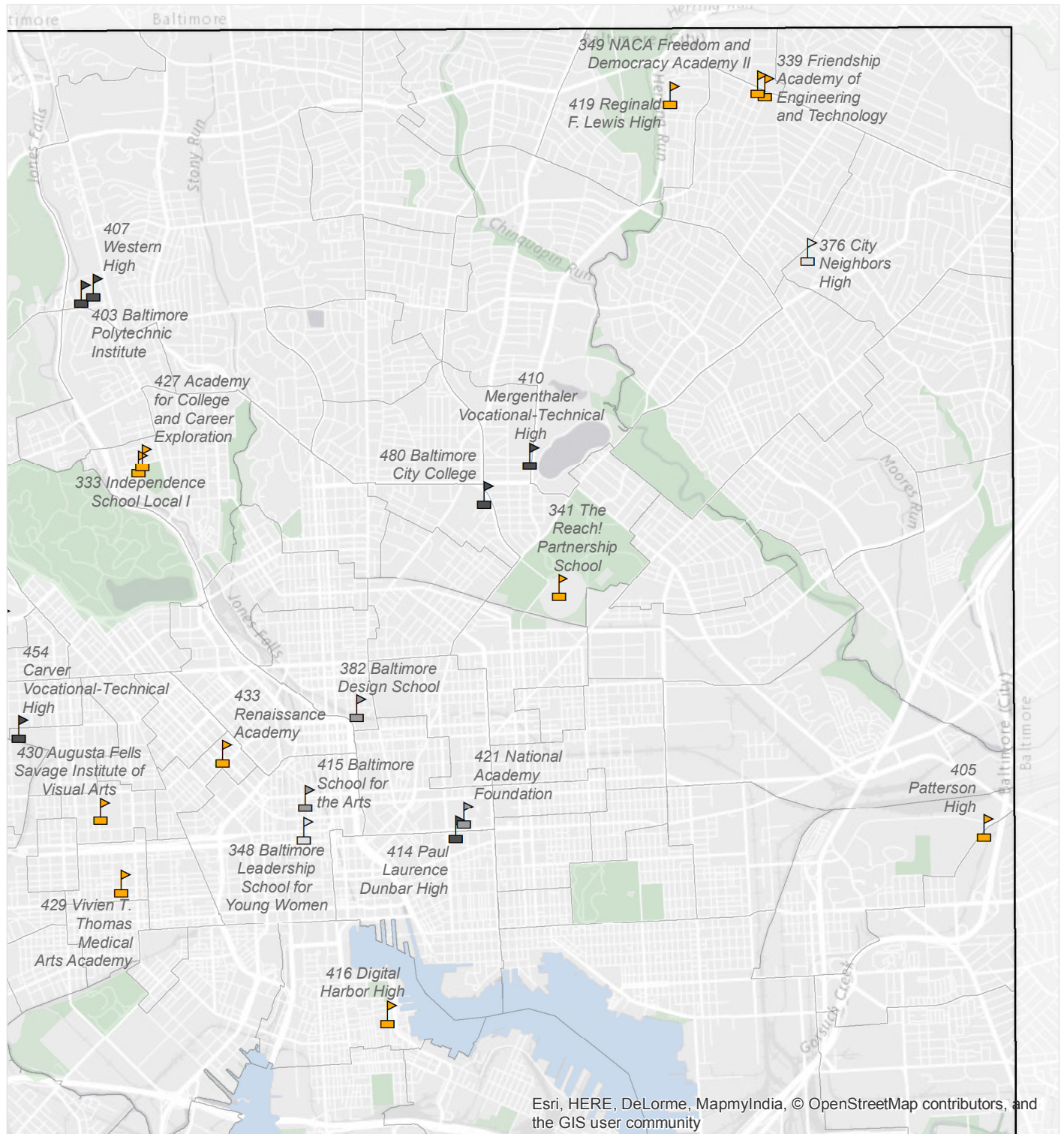
A.3 Proposed Schedule

Schedule		
Task	Start	Complete
Educational Specifications	January 2014	October 2017
Feasibility Study	January 2014	October 2016
Concept + Schematic Design	August 2017	October 2017
Design Development	November 2017	January 2018
Construction Documents	January 2018	May 2018
Submit Early-Release GMP for MSA/BPW	April 2019	June 2018
Renovation Substantial Completion	May 2018	July 2018
Addition Substantial Completion	May 2018	July 2019
Occupancy	August 2019	August 2019

A.4 Facility Summary

Facility Summary		
	Current	2019-20 Projected
State Rated Capacity	742*	870
Full Time Enrollment of program	575**	545
2 Relocatables	None	None

#341 REACH! High

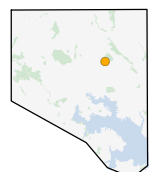


Note - only programs within the choice lottery can be considered adjacent programs.



Entry Process

- entrance criteria
- specialized
- choice lottery
- school-based lottery



B. PROJECT BACKGROUND

B. PROJECT BACKGROUND

B.1 Community Description and History:

The Fairmont-Harford Building #456 is located in Community Statistical Area (CSA) #7, which primarily consists of residential zoning: R-4, R-5, and R-6. The CSA also contains some industrial and small business zoning.

The total population for this CSA group remained constant from 2000 to 2010. The African-American Population increased by 8% and the White Population decreased by 11%. The median household income went up by 26% between 2000 and 2010, but it was actually a slight decrease when inflation is taken into account.

The northern section of this CSA Group is made up of middle market choice and middle market housing typologies, and much of the southern section is made up of middle market stressed. The total number of residential properties increased by 1.4% and the number of vacant units decreased from 4% to 1%.

Significant revitalization and redevelopment projects are planned or underway for CSA #7. Neighborhoods bordering Belair Road were included in the 2011 Belair Road Urban Land Institute (ULI) Technical Assistance Panel (TAP), and continue to be a part of the ongoing Belair Road Revitalization effort. The 58-acre Claremont-Freedom neighborhood is being redeveloped into a community of 340 new mixed-use housing units. Phase V of the project started in 2016.

B.2 School Description and History:

The Fairmont-Harford Building opened in 1924, and was originally known as Clifton Park Junior High #90. Between 2010-2015 this building housed Achievement Academy @Harbor City Alternative HS #413 and Baltimore Liberation Diploma Plus Acceleration Transformation School #365 (an Over-age/Under-Credit School which has since been closed). In school year 2015-16 Achievement Academy #413 relocated to the Northern Building #402.

The Fairmont-Harford Building #456 is located at the edge of Clifton Park in northeast Baltimore between St. Lo Drive and Harford Road. Amtrak railroad tracks are just south of the building. The adjacent section of Clifton Park contains baseball fields and a multi-use field. There is a parking area for approximately 70 cars and loading dock entrance off Harford Road on the south side of the site.

Ethnicity for Students SY1617

Hispanic: 1%

Non-Hispanic African American: 98%

Non-Hispanic American Indian: 0%

Non-Hispanic Asian: 0%

Non-Hispanic Native Hawaiian/Pacific Islander: 0%

Non-Hispanic White: 1%



B.3 Existing Site Plans, Floor Plans, and Photographs:

Existing Site and Floor Plans are located in the Appendix.



Rear Building Facade



Side Entry



Classroom



Gym



Hallway



Main entry area



Cafeteria



Kitchen



Auditorium



Auditorium



Auditorium Balcony



Basement Level Damage

B.4 Summary of Recent Feasibility Studies or Assessments:

The 10-Year Plan's recommendation for the Fairmount-Harford is based on the 2010 Jacobs building assessment report. The feasibility study will consider and analyze various options for the building and provide a determination of the best recommendation. The rationale behind this recommendation is as follows:

- The FCI suggests that it may be most cost-effective to replace the building; it should be noted it is an undesignated historic building which eliminates the replacement option.
- The Fairmont-Harford building falls way below the targeted EAS of 80 for buildings used for instruction in the district, and therefore, does not meet the standard for supporting excellent teaching and learning.

C. PROPOSED EDUCATIONAL PROGRAMS AND SERVICES

C. PROPOSED EDUCATIONAL PROGRAMS AND SERVICES

C.1 School Grade Organization:

REACH! High School #341 is a traditional high school with grades 9 to 12. The prototype that is the basis for this educational specification was a mid-sized high school of approximately 900 students.

C.2 Proposed Curriculum:

The REACH! High School program contains education programs which will impact the design of the building and space requirements. These programs are:

- Lifeskills Lab
- CTE classrooms:
 - Academy of Health Professions
 - Nursing, Pharmacy Lab, Project/Material Storage, classroom, Dispensary
 - Homeland Security
 - Construction trades
 - HVAC & Carpentry Labs; Locker room, tool storage, material storage
 - Career Research & Development

C.3 Proposed Staff:

Proposed Staff	
Position	Quantity
Principal	1
Assistant Principal	2
Librarian	1
Secretary II- School	2
Psychologist	2
Nurse	1
Guidance Counselor	4
Social Worker	2
Speech Pathologist	1
General Educators	16
Teacher - Special Education	4
OT/PT	1
Special Educations Para-educator	4
Custodial Worker 1/12 mo	4
Teacher - Sciences	4
Teacher - Art	1
Teacher - Music	1
Teacher - CTE Program	8
ROTC Instructor	2
Food Services Worker I/3.5 hrs	3
Food Services Worker/5 hrs	1
Food Services Worker I/6 hrs	1
Manager I - Cafeteria	1
Teacher - Technology	1
Teacher - Physical Education	3
IEP Team Associate	2
Assistant - Non Instructional/12 mo	2
Educational Associate/ 10 mo	2
Team Support Paraprofessional	2

See section F.3 for parking requirements.

C.4 Enrollment Projections:

Enrollment projections are based on historic trends using the GPR (grade progression ratio), which uses historical enrollment in conjunction with the number of students who progress on to the following year. While these values are the basis for the design capacity at a School, a number of other factors are taken into consideration, including recent developments, population growths, portfolio decisions, and general community trends.

341 REACH! H											
Grade	Actual	Projected									
	2016-2017	2017-2018	2018-2019	2019-2020	2020-2021	2021-2022	2022-2023	2023-2024	2024-2025	2025-2026	2026-2027
9	189	199	199	196	203	211	219	211	194	195	200
10	141	132	139	138	136	142	148	155	149	138	139
11	134	122	114	120	119	118	124	130	137	132	122
12	111	106	98	91	96	96	95	101	106	112	109
TOTAL	575	559	550	545	554	567	586	597	586	577	570

Future Utilization	63%	64%	65%	67%	69%	67%	66%	66%
--------------------	-----	-----	-----	-----	-----	-----	-----	-----

Note - Projections are pulled from the SY1617 CEFMP which reflected the current SRC of 742. These utilizations show the anticipated SRC of 870.

As a renovation project of a building of historical significance we are limited to the current footprint (we can not decrease our square footage, and the only addition will be a high school-sized gym (the existing gym is under-sized). Additionally, the district continues to adjust our capacity at high schools through the portfolio review process; this central location will support these continued efforts.

C.5 Future Programs and Services:

The REACH! High School community prides itself on the school's CTE (Career Technology Education) programs. Administrators and faculty alike believe that these supplementary programs draw many of the students to school each day. The school will continue to provide Career Research & Development, Academy of Health Professions, Homeland Security, and Construction Trades, and The REACH! School High School will also contain an ROTC program.

Community Partners

The Out of School Time Support and the Community Services Suite are all components of the Community Space. The Community Services Suite includes a pantry, personal care space with shower, and laundry space.

There is typically 3,000 sf of Community Space that is included in the program as part of the 21st Century Schools initiative. Due to the proximity of the Councilwoman Rita R. Church Community Center, only the spaces above will be included for this program.

INSPIRE:

To leverage the 21st Century Schools Initiative and to enhance the connection between the schools and the surrounding neighborhoods, the Baltimore City Planning Department launched a new program called INSPIRE. INSPIRE stands for Investing in Neighborhoods and Schools to Promote Improvement, Revitalization, and Excellence. This planning program focuses on the neighborhoods immediately surrounding each of the new or renovated schools that are a part of the 21st Century program, specifically the 1/4-mile surrounding each school. Once the Board of School Commissioners approves a feasibility study preferred school design option, the site-specific kickoff of the INSPIRE community engagement and planning process for the surrounding neighborhoods starts.

To engage stakeholders in the program, service needs and design of the community space, City Schools worked with the Mayors Office and the Family League of Baltimore to incorporate the Community Schools Planning process used at more than 40 City Schools.

F. PROPOSED SITE REQUIREMENTS

F. PROPOSED SITE REQUIREMENTS

F. Proposed Site Requirements:

F.1 Parking - bus, car, delivery, service, staff, visitor:

The Fairmount-Harford building has approximately 75 parking spots; they are inefficiently laid out and will need to be studied in order to maximize the number of spaces on the available land.

Approximately 6% of the school receives yellow bus services; this is higher than most City Schools due to the presence of the Lifeskills city-wide program. X busses serve these students. Approximately 72% of the students receive MTA passes; this means they live beyond 1.5 miles from the school.

575 total enrolled in SY1617

35 yellow bus (6%)

1 cab (<1%)

413 MTA (72%)

126 non-riders (22%)

The majority of the REACH! students arrive by MTA. There are yellow busses that serve the school, and arrival is typically staggered.

F.2 Service access:

Service for the existing building is off of Harford Road. There is only one curb cut off of Harford Road that serves all vehicular access to the building. If there is an opportunity, there should be multiple paths to allow service vehicles to not be in the primary path.

F.3 Vehicle and pedestrian access:

See F.2 regarding vehicular access. Pedestrian access will be off of Harford Road. There should be a clear separation of pedestrian and vehicular routes. With approximately 80 staff, there will need to be an additional 20 spaces for visitors for a total of 100 spaces. There is no street parking available; all spaces will need to be provided on-site.

F.4 Playing fields/courts/yards:

Both Lake Clifton (current home of REACH!) and Fairmount-Harford are located in Lake Clifton Park. It is owned by the City and operated by the Department of Recreation and Parks. There is a Master Plan that was created approximately 10 years ago. The current park includes facilities such as tennis courts, a stadium field, softball and baseball fields, and a golf course. There is a pool within Lake Clifton. As part of Design, it will need to be determined if new facilities (courts and stadium with track) that are currently near REACH! would be created to be adjacent to the Fairmount-Harford Building, or if the current facilities will be refurbished.

F.5 Natural environmental areas:

Aside from two mature shade trees around the building, the only areas with significant vegetation occurs at the southern boundary, along the existing railroad tracks. Here, a natural buffer has grown along the fence line to create a moderate screen between the school and the properties to the south. It is not anticipated that improvements to the building or site will need to avoid regulated vegetation; however care should be taken to limit disturbance to the existing development footprint as much as is possible.

F.6 Utilities

Based on public records, the existing facility appears to be served by dual 4" meter, from the 10" mainline in the Harford Road right-of-way. The existing meter is located along the right-of-way between the two sidewalk connections to the west. It is assumed that the existing water service is of sufficient capacity to meet

the needs of any prospective improvements.

Public records also indicate a 72-inch water main running between the facility and the right-of-way, and a 54-inch water main running along the northeastern side of the property. As there is no easement or right-of-way associated with these mainlines, building setbacks will be reviewed on a case-by-case basis. Since the current setback from the main is approximately 40-feet, this minimum dimension should be utilized for any potential improvements as well.

In terms of sanitary sewer service, the existing building utilizes two 8-inch lines which leave the building on the southern side, in the existing parking lot. These two lines lead to a manhole on the southeastern side of the parking lot, where a 10-inch sewer line conveys effluent eastwards along the railroad tracks. It is assumed that the sanitary sewer service is sufficiently meeting the current needs of the property and should also meet the needs of any prospective improvements.

F.7 Other:

Stormwater management requirements will need to be addressed for all new construction. The stormwater management design techniques could be incorporated as an environmental literacy learning tool for the School. One option would include harvesting the rainwater from the building addition in above ground tanks or in an underground cistern, and the harvested rain water could then be used to irrigate the school garden, landscaping, and grass fields, or could also be used in a gray water system for toilet water in the school.

Other options include installing bio retention facilities or rain garden facilities around the perimeter of the proposed auxiliary parking lot to capture and treat runoff from the paved surface. This facility could be landscaped and could also serve as an environmental literacy learning tool. Permeable pavement material for the auxiliary parking lot could also be explored as a stormwater management technique if the existing soils showed to have adequate infiltration capabilities.

Green roof areas is an option to investigate for the building addition which could serve as both an outdoor learning space and also a stormwater management technique. Although some drawbacks to implementing a green roof exist, such as the high construction cost and maintenance concerns, a green roof system would contribute to the requirements of the City's stormwater control requirements.

I. GENERAL SCHOOL DESIGN CRITERIA

I. GENERAL SCHOOL DESIGN CRITERIA

I.7 Special or Unique Program Requirements:

Through discussions with the internal School Administration, Staff and local Community leaders, several special and unique program requirements have been identified for the REACH! program. These spaces generally are deviations from the general Educational Specifications requirements and are reflected as part of our Site Specific Educational Specifications. Below is a list of these program requirements along with a brief description and justification for each space.

04 SPECIAL EDUCATION

04.01 General

04.01.04 Life Skills Lab

08 TECHNOLOGY EDUCATION

08.03 CTE Academy of Health Profession

08.03.01 Nursing Lab

08.03.02 Project/Material Storage (2)

08.03.03 Pharmacy Lab

08.03.04 Dispensary/Storage

08.03.05 Classroom

08.04 CTE Homeland Security

08.04.01 Homeland Security Lab

08.04.02 Laptop Storage (2)

08.05 CTE Career Research & Development

08.05.01 Career Research & Development Lab

08.06 CTE Construction Trades

08.06.01 HVAC Lab

08.06.02 Locker Room (2)

08.06.03 Tool Storage (2)

08.06.04 Material Storage (2)

08.06.05 Carpentry Lab

08.06.06 Construction Trade Classroom (2)

08.06.07 Teacher Office (2)

J. INDIVIDUAL SPACE DESCRIPTIONS

J. INDIVIDUAL SPACE DESCRIPTIONS

This section of the document includes descriptions of the general guidelines and specific room requirements for each area of activity within the building that is different from the general Educational Specifications document.

Example:

ADMINISTRATION			Key number	U	01	02	03
Distributed Admin Storage							
PROGRAM	Description	Storage for administrative materials					
	Area Required (SF)	45					
	Number of Users	0					
	Adjacencies	Distributed Administration (U 01.02)					
ARCHITECTURAL	Ceiling	See standard specifications					
	Walls	See standard specifications					
	Floor	See standard specifications					
	Doors	See standard specifications					
	Windows	See standard specifications					
	Acoustics	See standard specifications					
SYSTEMS	Lighting	No special requirements					
	Audio/Visual	No special requirements					
	Telecom/Data	No special requirements					
	Electrical	No special requirements					
	HVAC	No special requirements					
	Plumbing	No special requirements					
	Specialty	No special requirements					
EQUIPMENT	Display						
	Casework/Millwork	6	LF	bookshelves			
	FF&E (NIC)						
REMARKS							

“U” = Upper grades
“L” = Lower grades
“C” = Community space

01 = Department
02 = Program Area
03 = Space/Room

Baltimore City Public Schools

Educational Specifications

“U” = Upper grades
 “L” = Lower grades
 “C” = Community space

01 = Department
 02 = Program Area
 03 = Space/Room

L 03 TEACHING AND LEARNING

DESIGN DEVIATIONS FROM PROTOTYPE

REACH! has a high school Life Skills city-wide program.

04.01 SPECIAL EDUCATION - General

Description			Ed. Spec. Part 2/Vol. IV Ref.
04	01.04	Life Skills Lab	DIFFERS FROM STANDARD

Classroom | Life Skills Lab

PROGRAM	Description	Lab for the Life Skills program.					
	Area Required (SF)	1100					
	Number of Users	15 students; 2 teachers					
	Adjacencies	Special Education Classrooms 04.01.01					
ARCHITECTURAL	Ceiling	See standard specifications					
	Walls	See standard specifications					
	Floor	See standard specifications					
	Doors	See standard specifications					
	Windows	See standard specifications					
	Acoustics	See standard specifications					
SYSTEMS	Lighting	No special requirements					
	Audio/Visual	No special requirements					
	Telecom/Data	No special requirements					
	Electrical	No special requirements					
	HVAC	No special requirements					
	Plumbing	Sink w area for drying rack					
	Specialty	No special requirements					
EQUIPMENT	Display	8	LF	tackboard	8	LF	whiteboard with tack strip
		16	LF	whiteboard with tack strip			
	Casework/Millwork	3	LF	teacher wardrobe	3	LF	Equipment storage
		12	LF	counter: wall/base cabinet			
	FF&E (NIC)	1		teacher desk/chair	1		Kitchenette w stove
		15		student desk/chair	1		washer/dryer
		1		work table + chair	1		refrigerator
REMARKS	This room is intended to serve as a lab space for the Life Skills program. The instructional emphasis of the program is on the academic content areas with an integration of activities of daily living that are needed to support functioning in the home, school, community and at work.						
	Other FF+E possibilities: 1 set utensils/plates; microwave; prep station for food; cafe area (4 tables and seating for 16)						

L 04 SPECIAL EDUCATION

DESIGN DEVIATIONS FROM PROTOTYPE

REACH! has a robust CTE program with several trades.

08.03 TECHNOLOGY EDUCATION - CTE Academy of Health Profession

<i>Description</i>			<i>Ed. Spec. Part 2/Vol. IV Ref.</i>
08	03.01	Nursing Lab	DIFFERS FROM STANDARD
08	03.02	Project/Material Storage	DIFFERS FROM STANDARD
08	03.03	Pharmacy Lab	DIFFERS FROM STANDARD
08	03.04	Dispensary/Storage	DIFFERS FROM STANDARD
08	03.05	Classroom	DIFFERS FROM STANDARD

08.04 TECHNOLOGY EDUCATION - CTE Homeland Security

<i>Description</i>			<i>Ed. Spec. Part 2/Vol. IV Ref.</i>
08	04.01	Homeland Security Lab	DIFFERS FROM STANDARD
08	04.02	Laptop Storage	DIFFERS FROM STANDARD

08.05 TECHNOLOGY EDUCATION - CTE Career Research & Development

<i>Description</i>			<i>Ed. Spec. Part 2/Vol. IV Ref.</i>
08	05.01	Career Research & Dvlpt. Lab	DIFFERS FROM STANDARD

08.06 TECHNOLOGY EDUCATION - CTE Construction Trades

<i>Description</i>			<i>Ed. Spec. Part 2/Vol. IV Ref.</i>
08	06.01	HVAC Lab	DIFFERS FROM STANDARD
08	06.02	Locker Room	DIFFERS FROM STANDARD
08	06.03	Tool Storage	DIFFERS FROM STANDARD
08	06.04	Material Storage	DIFFERS FROM STANDARD
08	06.05	Carpentry Lab	DIFFERS FROM STANDARD
08	06.06	Construction Trade Classroom	DIFFERS FROM STANDARD
08	06.07	Teacher Office	DIFFERS FROM STANDARD

CTE Academy of Health Profession | Nursing Lab

PROGRAM	<i>Description</i>	Lab area for CTE Nursing students			
	<i>Area Required (SF)</i>	1,400			
	<i>Number of Users</i>	20 students; 2 teachers			
	<i>Adjacencies</i>	08.03.05 Classroom; 08.03.02 Project/Material Storage			
ARCHITECTURAL	<i>Ceiling</i>	See standard specifications			
	<i>Walls</i>	See standard specifications			
	<i>Floor</i>	See standard specifications			
	<i>Doors</i>	See standard specifications			
	<i>Windows</i>	See standard specifications			
	<i>Acoustics</i>	See standard specifications			
SYSTEMS	<i>Lighting</i>	No special requirements			
	<i>Audio/Visual</i>	No special requirements			
	<i>Telecom/Data</i>	Telecom/data drop			
	<i>Electrical</i>	GFI on all circuits next to wet areas			
	<i>HVAC</i>	No special requirements			
	<i>Plumbing</i>	2 sinks			
	<i>Specialty</i>	No special requirements			
EQUIPMENT	<i>Display</i>	16	LF	whiteboard w tack strip	
	<i>Casework/Millwork</i>	3	LF	teacher wardrobe	
		12	LF	counter: wall/base cabinet	
	<i>FF&E (NIC)</i>	3	bench (holds 20 students)	1	teacher desk/chair
		4	patient beds	1	triage area
		4	flat panel screens		
REMARKS	This room should be designed to meet the needs of the required CTE program. The beds and triage area are intended to simulate a hospital environment.				

PROGRAM	<i>Description</i>	Project and material storage for the Nursing OR Pharmacy Tech Labs
	<i>Area Required (SF)</i>	100
	<i>Number of Users</i>	0
	<i>Adjacencies</i>	08.03.01 Nursing Lab OR 08.03.03 Pharmacy Lab
ARCHITECTURAL	<i>Ceiling</i>	See standard specifications
	<i>Walls</i>	See standard specifications
	<i>Floor</i>	See standard specifications
	<i>Doors</i>	See standard specifications
	<i>Windows</i>	See standard specifications
	<i>Acoustics</i>	See standard specifications
SYSTEMS	<i>Lighting</i>	No special requirements
	<i>Audio/Visual</i>	No special requirements
	<i>Telecom/Data</i>	No special requirements
	<i>Electrical</i>	No special requirements
	<i>HVAC</i>	No special requirements
	<i>Plumbing</i>	No special requirements
	<i>Specialty</i>	No special requirements
EQUIPMENT	<i>Display</i>	
	<i>Casework/Millwork</i>	
	<i>FF&E (NIC)</i>	15 lf utility shelves 24" deep

REMARKS

CTE Academy of Health Profession | *Pharmacy Lab*

PROGRAM	<i>Description</i>	Lab area for CTE Pharmacy Technician students			
	<i>Area Required (SF)</i>	1,400			
	<i>Number of Users</i>	20 students; 2 teachers			
	<i>Adjacencies</i>	08.03.05 Classroom; 08.03.02 Project/Material Storage; 08.03.04 Dispensary/Storage			
ARCHITECTURAL	<i>Ceiling</i>	See standard specifications			
	<i>Walls</i>	See standard specifications			
	<i>Floor</i>	See standard specifications			
	<i>Doors</i>	See standard specifications			
	<i>Windows</i>	See standard specifications			
	<i>Acoustics</i>	See standard specifications			
SYSTEMS	<i>Lighting</i>	No special requirements			
	<i>Audio/Visual</i>	No special requirements			
	<i>Telecom/Data</i>	Telecom/data drop			
	<i>Electrical</i>	GFI on all circuits next to wet areas			
	<i>HVAC</i>	No special requirements			
	<i>Plumbing</i>	1 sink			
	<i>Specialty</i>	No special requirements			
EQUIPMENT	<i>Display</i>	16	LF	whiteboard w tack strip	
	<i>Casework/Millwork</i>	3	LF	teacher wardrobe	
		16	LF	Countertop w mix of lockable doors and drawers below for medications and needles. Upper cabinets above, combo of both open shelves and lockable doors for supplies.	
	<i>FF&E (NIC)</i>	3		benches (holds 20 students)	1 teacher desk/chair
REMARKS	This room should be designed to meet the needs of the required CTE program. Dispensary should open up to the lab to best simulate a Pharmacy.				

CTE Academy of Health Profession | *Dispensary/Storage*

PROGRAM	<i>Description</i>	Pharmacy dispensary and storage that serves the Pharmacy lab
	<i>Area Required (SF)</i>	300
	<i>Number of Users</i>	1 to 5 students
	<i>Adjacencies</i>	08.03.03 Pharmacy Lab; 08.04.02 Project/Material storage
ARCHITECTURAL	<i>Ceiling</i>	See standard specifications
	<i>Walls</i>	One wall open to Pharmacy
	<i>Floor</i>	See standard specifications
	<i>Doors</i>	See standard specifications
	<i>Windows</i>	See standard specifications
	<i>Acoustics</i>	See standard specifications
SYSTEMS	<i>Lighting</i>	No special requirements
	<i>Audio/Visual</i>	No special requirements
	<i>Telecom/Data</i>	No special requirements
	<i>Electrical</i>	No special requirements
	<i>HVAC</i>	No special requirements
	<i>Plumbing</i>	No special requirements
	<i>Specialty</i>	No special requirements
EQUIPMENT	<i>Display</i>	12 LF shelving
	<i>Casework/Millwork</i>	5 LF serving counter
		6 LF counter: wall/base cabinet
	<i>FF&E (NIC)</i>	
REMARKS	This room should be designed to meet the needs of the required CTE program. Dispensary will look out into the Pharmacy Lab and should simulate an actual pharmacy.	

CTE Academy of Health Profession | Classroom

PROGRAM	<i>Description</i>	CTE classroom for Nursing and Pharm Tech students			
	<i>Area Required (SF)</i>	850			
	<i>Number of Users</i>	20 students; 1 teachers			
	<i>Adjacencies</i>	08.03.01 Nursing Lab; 08.03.03 Pharmacy Lab			
ARCHITECTURAL	<i>Ceiling</i>	See standard specifications			
	<i>Walls</i>	See standard specifications			
	<i>Floor</i>	See standard specifications			
	<i>Doors</i>	See standard specifications			
	<i>Windows</i>	See standard specifications			
	<i>Acoustics</i>	See standard specifications			
SYSTEMS	<i>Lighting</i>	Dual switching and electronic lighting controls			
	<i>Audio/Visual</i>	No special requirements			
	<i>Telecom/Data</i>	No special requirements			
	<i>Electrical</i>	No special requirements			
	<i>HVAC</i>	No special requirements			
	<i>Plumbing</i>	No special requirements			
	<i>Specialty</i>	No special requirements			
EQUIPMENT	<i>Display</i>	16	LF	whiteboard w tack strip	8 LF tackboard
		8	LF	whiteboard w tack strip	
	<i>Casework/Millwork</i>	3	LF	teacher wardrobe	
		12	LF	counter: wall/base cabinet	
	<i>FF&E (NIC)</i>	1		teacher desk/chair	
		20		student desk/chair	
		9	LF	mobile storage	
REMARKS	This room should be designed to meet the needs of the Pharmacy and Nursing CTE programs.				

CTE Homeland Security | Homeland Security Lab

PROGRAM	Description	Lab area for Homeland Security students					
	Area Required (SF)	1,200					
	Number of Users	20 students; 1 teacher					
	Adjacencies	08.04.02 Laptop Storage					
ARCHITECTURAL	Ceiling	See standard specifications					
	Walls	See standard specifications					
	Floor	See standard specifications					
	Doors	See standard specifications					
	Windows	See standard specifications					
	Acoustics	See standard specifications					
SYSTEMS	Lighting	No special requirements					
	Audio/Visual	No special requirements					
	Telecom/Data	No special requirements					
	Electrical	Minimum of 10 floor outlet clusters					
	HVAC	No special requirements					
	Plumbing	No special requirements					
	Specialty	No special requirements					
EQUIPMENT	Display	16	LF	whiteboard w tack strip	8	LF	tackboard
		8	LF	whiteboard w tack strip			
	Casework/Millwork	3	LF	teacher wardrobe			
		12	LF	counter: wall/base cabinet			
	FF&E (NIC)	20		work stn mobile tables	1		teacher desk/chair
	20		student seats				
REMARKS	This room should be designed to meet the needs of the required CTE program.						

CTE Homeland Security | Laptop Storage

PROGRAM	<i>Description</i>	Laptop Cart storage for Homeland Security and Career Research & Development
	<i>Area Required (SF)</i>	200
	<i>Number of Users</i>	0
	<i>Adjacencies</i>	08.04.01 Homeland Security Lab & 08.05.01 Career Research & Dvlpt. Lab
ARCHITECTURAL	<i>Ceiling</i>	See standard specifications
	<i>Walls</i>	Should have slab-to-slab wire mesh on all 4 walls
	<i>Floor</i>	See standard specifications
	<i>Doors</i>	Fully secure-able door with no glass window
	<i>Windows</i>	None
	<i>Acoustics</i>	See standard specifications
SYSTEMS	<i>Lighting</i>	No special requirements
	<i>Audio/Visual</i>	No special requirements
	<i>Telecom/Data</i>	No special requirements
	<i>Electrical</i>	At least (2) Quad electric outlet on clean power, located on opposite walls
	<i>HVAC</i>	No special requirements
	<i>Plumbing</i>	No special requirements
	<i>Specialty</i>	Should be keyed with teacher access
EQUIPMENT	<i>Display</i>	
	<i>Casework/Millwork</i>	
	<i>FF&E (NIC)</i>	10 lf utility shelves 24" deep
REMARKS		

CTE Career Research & Dvlpt. | Career Research & Dvlpt. Lab

PROGRAM	Description	Lab area for Career Research & Dvlpt. students					
	Area Required (SF)	1,200					
	Number of Users	20 students; 1 teacher					
	Adjacencies	08.04.02 Laptop Storage					
ARCHITECTURAL	Ceiling	See standard specifications					
	Walls	See standard specifications					
	Floor	See standard specifications					
	Doors	See standard specifications					
	Windows	See standard specifications					
	Acoustics	See standard specifications					
SYSTEMS	Lighting	No special requirements					
	Audio/Visual	No special requirements					
	Telecom/Data	No special requirements					
	Electrical	Minimum of 10 floor outlet clusters					
	HVAC	No special requirements					
	Plumbing	No special requirements					
	Specialty	No special requirements					
EQUIPMENT	Display	16	LF	whiteboard w tack strip	8	LF	tackboard
		8	LF	whiteboard w tack strip			
	Casework/Millwork	3	LF	teacher wardrobe			
		12	LF	counter: wall/base cabinet			
	FF&E (NIC)	20		work stn mobile tables	1		teacher desk/chair
	20		student seats				
REMARKS	This room should be designed to meet the needs of the required CTE program.						

CTE Construction Trades | HVAC Lab

PROGRAM	<i>Description</i>	Lab area for CTE HVAC students
	<i>Area Required (SF)</i>	3,000
	<i>Number of Users</i>	20 students; 1 teachers
	<i>Adjacencies</i>	08.06.02 Locker Room; 08.06.03 Tool Storage; 08.06.04 Material Storage; 08.06.06 Construction Trade Classroom; 08.06.08 Teacher Office
ARCHITECTURAL	<i>Ceiling</i>	See standard specifications
	<i>Walls</i>	See standard specifications
	<i>Floor</i>	See standard specifications
	<i>Doors</i>	See standard; Additional double/roll-up door entry needed for materials
	<i>Windows</i>	See standard specifications
	<i>Acoustics</i>	Treatment needed to mitigate sounds
SYSTEMS	<i>Lighting</i>	No special requirements
	<i>Audio/Visual</i>	No special requirements
	<i>Telecom/Data</i>	Telecom/data drop
	<i>Electrical</i>	240 voltage outlets need to be accessible throughout the entire room periphery and on drop-down reels
	<i>HVAC</i>	No special requirements
	<i>Plumbing</i>	1 Large utility sink
	<i>Specialty</i>	No special requirements
EQUIPMENT	<i>Display</i>	16 LF whiteboard w tack strip
	<i>Casework/Millwork</i>	3 LF teacher wardrobe
		12 LF counter: wall/base cabinet
	<i>FF&E (NIC)</i>	3 bench (holds 20 students)
REMARKS	This room should be designed to meet the needs of the required CTE program. Further details will be provided during design.	

CTE | Locker Room

PROGRAM	Description	Private changing area and toilet room for CTE students to change into appropriate clothing; should have one for girls and one for boys.			
	Area Required (SF)	150 each			
	Number of Users	2-8			
	Adjacencies	CTE Construction Trades Classrooms (08.06.01 and 08.06.05)			
ARCHITECTURAL	Ceiling	See standard specifications			
	Walls	See standard specifications			
	Floor	See standard specifications			
	Doors	See standard specifications			
	Windows	See standard specifications			
	Acoustics	See standard specifications			
SYSTEMS	Lighting	No special requirements			
	Audio/Visual	No special requirements			
	Telecom/Data	No special requirements			
	Electrical	No special requirements			
	HVAC	No special requirements			
	Plumbing	Toilet and sink			
	Specialty	No special requirements			
EQUIPMENT	Display				
	Casework/Millwork	10	two tier lockers	1	toilet stall
		1	mirror		
		3	LF bench		
	FF&E (NIC)				
REMARKS	• Accessories: paper towel holder, bench, mirror, coat hooks				

CTE Construction Trades | Tool Storage

PROGRAM	<i>Description</i>	Tool storage for construction trade labs
	<i>Area Required (SF)</i>	200
	<i>Number of Users</i>	1 to 3
	<i>Adjacencies</i>	08.06.01 HVAC Lab; 08.06.05 Carpentry Lab
ARCHITECTURAL	<i>Ceiling</i>	See standard specifications
	<i>Walls</i>	Slab-to-slab wire mesh on all walls
	<i>Floor</i>	See standard specifications
	<i>Doors</i>	Double Doors with no middle bar
	<i>Windows</i>	None
	<i>Acoustics</i>	See standard specifications
SYSTEMS	<i>Lighting</i>	No special requirements
	<i>Audio/Visual</i>	No special requirements
	<i>Telecom/Data</i>	No special requirements
	<i>Electrical</i>	At least (6) Quad electric outlet located on opposite walls
	<i>HVAC</i>	No special requirements
	<i>Plumbing</i>	No special requirements
	<i>Specialty</i>	No special requirements
EQUIPMENT	<i>Display</i>	6 LF whiteboard
	<i>Casework/Millwork</i>	12 LF counter: wall/base cabinet
	<i>FF&E (NIC)</i>	15 LF 24" deep utility Shelving
REMARKS	This room should be designed to meet the needs of the required CTE program. Further details will be provided during design. Consider alternatives to the white board to help with tool check-out. Confirm with program leader on access (if there should be a counter and roll-up window or if having the door access is sufficient).	

CTE Construction Trades | *Material Storage*

PROGRAM	<i>Description</i>	Material storage for construction trade labs
	<i>Area Required (SF)</i>	200
	<i>Number of Users</i>	1 to 3
	<i>Adjacencies</i>	08.06.01 HVAC Lab; 08.06.05 Carpentry Lab

ARCHITECTURAL	<i>Ceiling</i>	See standard specifications
	<i>Walls</i>	Secure walls to ceiling
	<i>Floor</i>	See standard specifications
	<i>Doors</i>	Double Doors with no middle bar
	<i>Windows</i>	None
	<i>Acoustics</i>	See standard specifications

SYSTEMS	<i>Lighting</i>	No special requirements
	<i>Audio/Visual</i>	No special requirements
	<i>Telecom/Data</i>	No special requirements
	<i>Electrical</i>	No special requirements
	<i>HVAC</i>	No special requirements
	<i>Plumbing</i>	No special requirements
	<i>Specialty</i>	No special requirements

EQUIPMENT	<i>Display</i>	6 LF whiteboard
	<i>Casework/Millwork</i>	12 LF counter: wall/base cabinet
	<i>FF&E (NIC)</i>	15 LF 24" deep utility Shelving

REMARKS	This room should be designed to meet the needs of the required CTE program. Further details will be There should be some type of access to this space from the exterior.
----------------	--

CTE Construction Trades | Carpentry Lab

PROGRAM	<i>Description</i>	Lab area for CTE Carpentry students
	<i>Area Required (SF)</i>	3,000
	<i>Number of Users</i>	20 students; 1 teachers
	<i>Adjacencies</i>	08.06.02 Locker Room; 08.06.03 Tool Storage; 08.06.04 Material Storage; 08.06.06 Construction Trade Classroom; 08.06.08 Teacher Office
ARCHITECTURAL	<i>Ceiling</i>	See standard specifications
	<i>Walls</i>	See standard specifications
	<i>Floor</i>	See standard specifications
	<i>Doors</i>	See standard; Additional double/roll-up door entry needed for materials
	<i>Windows</i>	See standard specifications
	<i>Acoustics</i>	Treatment needed to mitigate sounds
SYSTEMS	<i>Lighting</i>	No special requirements
	<i>Audio/Visual</i>	No special requirements
	<i>Telecom/Data</i>	Telecom/data drop
	<i>Electrical</i>	240 voltage outlets need to be accessible throughout the entire room periphery and on drop-down reels
	<i>HVAC</i>	Dust collection system required
	<i>Plumbing</i>	1 Large utility sink
	<i>Specialty</i>	No special requirements
EQUIPMENT	<i>Display</i>	16 LF whiteboard w tack strip
	<i>Casework/Millwork</i>	3 LF teacher wardrobe 12 LF counter: wall/base cabinet
	<i>FF&E (NIC)</i>	3 bench (holds 20 students)
REMARKS	This room should be designed to meet the needs of the required CTE program. Further details will be provided during design. Equipment will be determined during Design since some will be new and some will be coming from existing program at REACH!.	

CTE Construction Trades | Classroom

PROGRAM	Description	CTE classroom for Construction Trade students					
	Area Required (SF)	850					
	Number of Users	20 students; 1 teachers					
	Adjacencies	08.06.01 HVAC Lab OR 08.06.05 Carpentry Lab					
ARCHITECTURAL	Ceiling	See standard specifications					
	Walls	As needed					
	Floor	See standard specifications					
	Doors	See standard specifications					
	Windows	See standard specifications					
	Acoustics						
SYSTEMS	Lighting	Dual switching and electronic lighting controls					
	Audio/Visual	No special requirements					
	Telecom/Data	No special requirements					
	Electrical	No special requirements					
	HVAC	No special requirements					
	Plumbing	No special requirements					
	Specialty	No special requirements					
EQUIPMENT	Display	16	LF	whiteboard w tack strip	8	LF	tackboard
	Casework/Millwork	12	12	counter: wall/base cabinet			
	FF&E (NIC)	20		student desk/chair			
		9	LF	mobile storage			
REMARKS	This room should be designed to meet the needs of the Construction Trades CTE programs. Room should be integrated into the lab as much as possible while still maintaining its own area.						

CTE Construction Trades | Teacher Office

PROGRAM	<i>Description</i>	Office for CTE Teacher		
	<i>Area Required (SF)</i>	120		
	<i>Number of Users</i>	1 to 3		
	<i>Adjacencies</i>	08.06.01 HVAC Lab OR 08.06.05 Carpentry Lab		
ARCHITECTURAL	<i>Ceiling</i>	See standard specifications		
	<i>Walls</i>	See standard specifications		
	<i>Floor</i>	See standard specifications		
	<i>Doors</i>	See standard specification		
	<i>Windows</i>	Viewing window into lab		
	<i>Acoustics</i>	See standard specifications		
SYSTEMS	<i>Lighting</i>	No special requirements		
	<i>Audio/Visual</i>	No special requirements		
	<i>Telecom/Data</i>	No special requirements		
	<i>Electrical</i>	No special requirements		
	<i>HVAC</i>	No special requirements		
	<i>Plumbing</i>	No special requirements		
	<i>Specialty</i>	No special requirements		
EQUIPMENT	<i>Display</i>	4	LF	tackboard
		4	LF	markerboard
	<i>Casework/Millwork</i>	3	LF	locking storage cabinet
		2	LF	teacher wardrobe
	<i>FF&E (NIC)</i>	1		teacher desk/chair
		9	LF	bookshelves
		2		guest chairs
REMARKS	Office should have sight lines to material storage and tool storage; window should look directly into lab space.			

L. SUMMARY OF SPATIAL REQUIREMENTS

L. SUMMARY OF SPATIAL REQUIREMENTS

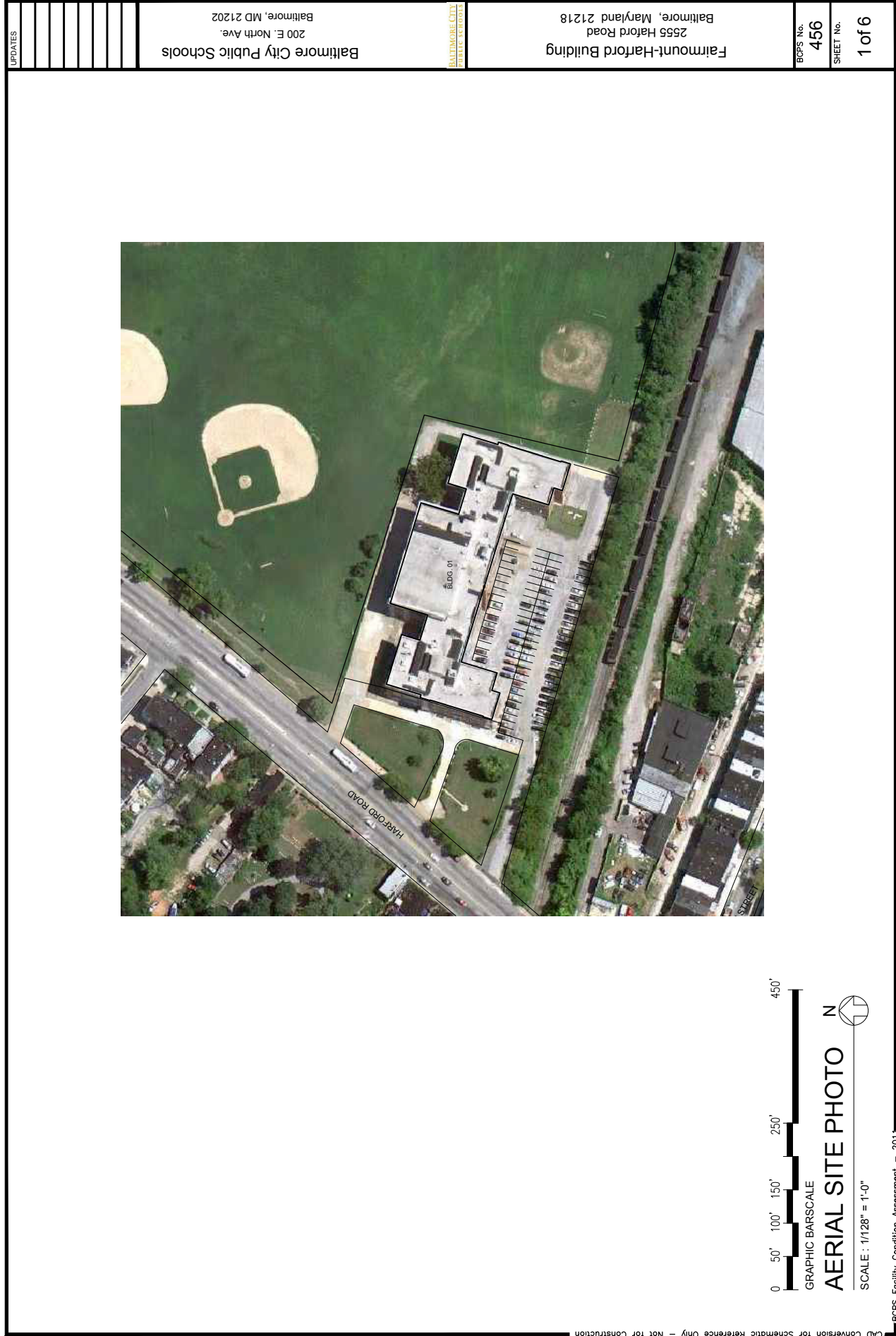
ROOM/SPACE	MEDIUM HIGH SCHOOL - 900 capacity						SITE SPECIFIC - REACH!					
	TEACHING STATIONS	AUXILIARY SPACES	SF EACH	TOTAL SF	SF TALLY	Traditional Students FTE Special Education FTE CTE Students FTE	TEACHING STATIONS	AUXILIARY SPACES	SF EACH	TOTAL SF	SF TALLY	Traditional Students FTE Special Education FTE CTE Students FTE
01 ADMINISTRATION												
01.01 Main Office				1,870						1,870		
01 01.01 GENERAL-RECEPTION		1	550	550			1	550	550			
01 01.02 CONFERENCE		1	250	250			1	250	250			
01 01.03 WORKROOM		1	200	200			1	200	200			
01 01.04 STORAGE		1	125	125			1	125	125			
01 01.05 SECURE STORAGE		1	75	75			1	75	75			
01 01.06 PRINCIPAL		1	150	150			1	150	150			
01 01.07 ADMINISTRATIVE ASSISTANT		1	100	100			1	100	100			
01 01.08 FLEX OFFICE		2	100	200			2	100	200			
01 01.09 COAT CLOSET		1	20	20			1	20	20			
01 01.10 ATTENDANCE OFFICE		1	100	100			1	100	100			
01 01.11 FINANCIAL SECRETARY		1	100	100			1	100	100			
01.02 Distributed Administration				495						495		
01 02.01 VICE PRINCIPAL / ADMINISTRATOR		2	150	300			2	150	300			
01 02.02 CONFERENCE		1	150	150			1	150	150			
01 02.03 STORAGE		1	45	45			1	45	45			
01.03 Faculty Support				400						400		
01 03.01 FACULTY LOUNGE		1	400	400			1	400	400			
02 STUDENT SERVICES												
02.01 Guidance				1275						1275		
02 01.01 OFFICE		3	100	300			3	100	300			
02 01.02 WAITING/RECEPTION		1	200	200			1	200	200			
02 01.03 CONFERENCE		1	350	350			1	350	350			
02 01.04 CAREER CENTER		1	250	250			1	250	250			
02 01.05 STORAGE		1	100	100			1	100	100			
02 01.06 TESTING		1	75	75			1	75	75			
02.02 Health Suite				900						950		
02 02.01 WAITING AREA		1	150	150			1	150	150			
02 02.02 EXAM ROOM/TREATMENT		2	100	200			2	100	200			
02 02.03 STUDENT REST AREA		2	150	300			2	150	300			
02 02.04 OFFICE		1	100	100			1	100	100			
02 02.05 STORAGE		1	50	50			1	50	50			
02 02.06 STUDENT TOILET - LARGE		1	100	100			1	100	100			
02 02.07 STUDENT TOILET		0	50	0			1	50	50			
02.03 Support Services				475						475		
02 03.01 PSYCHOLOGIST		1	100	100			1	100	100			
02 03.02 SOCIAL WORKER		1	100	100			1	100	100			
02 03.03 FLEX OFFICE		2	100	200			2	100	200			
02 03.04 RECORDS STORAGE		1	75	75			1	75	75			
02 03.05 FLEX CONFERENCE		0	200	0			0	200	0			
02.04 Student Services				325						325		
02 04.01 SGA OFFICE		1	150	150			1	150	150			
02 04.02 SCHOOL STORE		1	175	175			1	175	175			
03 TEACHING AND LEARNING												
03.01 Classrooms				15,300						11,900		
03 01.01 GENERAL	3	3	850	2550	75		2	2	850	1700	50	
03 01.02 ENGLISH	5	5	850	4250	125		4	4	850	3400	100	
03 01.03 MATH	5	5	850	4250	125		4	4	850	3400	100	
03 01.04 SOCIAL STUDIES	5	5	850	4250	125		4	4	850	3400	100	
03.02 Shared Spaces				5,100						5,000		
03 02.01 COLLABORATIVE LEARNING AREA		3	900	2700			2	900	1800			
03 02.02 RESOURCE		3	300	900			4	300	1200			
03 02.03 TEACHER PLANNING		3	300	900			4	300	1200			
03 02.04 PROJECT STORAGE		3	200	600			4	200	800			
04 SPECIAL EDUCATION												
04.01 General				1,920						4,720		
04 01.01 CLASSROOM	2	2	850	1700	20		4	4	850	3400	40	
04 01.02 OFFICE		1	120	120			1	120	120			
04 01.03 RECORDS STORAGE		1	100	100			1	100	100			
04 01.04 LIFE SKILLS LAB							1	1	1100	1100	10	

ROOM/SPACE	MEDIUM HIGH SCHOOL - 900 capacity						SITE SPECIFIC - REACH!					
	TEACHING STATIONS	AUXILIARY SPACES	SF EACH	TOTAL SF	SF TALLY	Traditional Students FTE Special Education FTE CTE Students FTE	TEACHING STATIONS	AUXILIARY SPACES	SF EACH	TOTAL SF	SF TALLY	Traditional Students FTE Special Education FTE CTE Students FTE
05 SCIENCES												
05.01 Science Labs					7,000					5,600		
05 01.01 BIOLOGY	2		1400	2800		50	1		1400	1400		25
05 01.02 CHEMISTRY	1		1400	1400		25	1		1400	1400		25
05 01.03 PHYSICS	1		1400	1400		25	1		1400	1400		25
05 01.04 ENVIRONMENTAL SCIENCE	1		1400	1400		25	1		1400	1400		25
05.02 Science Support					1,150					950		
05 02.01 PREP		3	200	600			3		200	600		
05 02.02 STORAGE		3	100	300			3		100	300		
05 02.03 CHEMICAL STORAGE		1	50	50			1		50	50		
05 02.04 GREENHOUSE		1	200	200			0		200	0		
06 FINE ARTS												
06.01 Visual Art					2,650					1,450		
06 01.01 ART STUDIO	1	1	1200	1200		25	1	1	1200	1200		25
06 01.02 ART STUDIO - 3D	1	1	1200	1200		25	0	0	1200	0		0
06 01.03 GRAPHICS MEDIA STUDIO		0	1000	0		0		0	1000	0		0
06 01.04 STORAGE		1	150	150			1		150	150		
06 01.05 KILN / CERAMIC STORAGE		1	100	100			1		100	100		
06.02 Music					3,265					2,265		
06 02.01 INSTRUMENTAL MUSIC	1	1	1500	1500		25	1	1	1500	1500		25
06 02.02 VOCAL MUSIC	1	1	1000	1000		25	0	0	1000	0		0
06 02.03 PRACTICE ROOM		2	60	120			2		60	120		
06 02.04 INSTRUMENT STORAGE		1	350	350			1		350	350		
06 02.05 UNIFORM STORAGE		1	100	100			1		100	100		
06 02.06 OFFICE		1	120	120			1		120	120		
06 02.07 LIBRARY / MUSIC STORAGE		1	75	75			1		75	75		
06.03 Drama					1,600					0		
06 03.01 CLASSROOM		0	900	0		0		0	900	0		0
06 03.02 BLACK BOX THEATER	1	1	1500	1500		25	0	0	1500	0		0
06 03.03 CONTROL ROOM		1	100	100				0	100	0		
06.04 Auditorium					8,150					8,150		
06 04.01 THEATER / AUDITORIUM		1	4500	4500			1		4500	4500		
06 04.02 STAGE W/ MODIFIED ORCHESTRA PIT		1	2000	2000			1		2000	2000		
06 04.03 TICKET BOOTH / OFFICE		1	100	100			1		100	100		
06 04.04 CONTROL ROOM		1	150	150			1		150	150		
06 04.05 COSTUME / PROP STORAGE		1	300	300			1		300	300		
06 04.06 DRESSING ROOMS		2	150	300			2		150	300		
06 04.07 STUDENT TOILET		2	50	100			2		50	100		
06 04.08 SET CONSTRUCTION		1	700	700			1	1	700	700		25
07 SPECIALS												
7.01 Foreign Language					1,900					1,900		
07 01.01 FOREIGN LANGUAGE	2	2	900	1800		50	2	2	900	1800		50
07 01.02 STORAGE		1	100	100			1		100	100		
08 TECHNOLOGY EDUCATION												
08.01 Foundations of Technology					1,100					1,100		
08 01.01 FOT LAB	1	1	1000	1000		25	1	1	1000	1000		25
08 01.02 PROJECT / MATERIAL STORAGE		1	100	100				1	100	100		
08.02 ROTC					2,900					2,900		
08 02.01 CLASSROOM	2	2	850	1700		50	2	2	850	1700		50
08 02.02 CHANGING ROOM		2	150	300				2	150	300		
08 02.03 UNIFORM STORAGE		1	240	240			1		240	240		
08 02.04 SUPPLIES		1	200	200			1		200	200		
08 02.05 ARMORY		1	100	100			1		100	100		
08 02.06 OFFICE		1	200	200			1		200	200		
08 02.07 BOOK STORAGE		1	20	20			1		20	20		
08 02.08 CADET OPERATIONS		1	140	140			1		140	140		
08.03 CTE ACADEMY OF HEALTH PROFESSION					0					4,050		
08 03.01 NURSING LAB	0	0	1200				0	1	1	1400	1400	20
08 03.02 PROJECT / MATERIAL STORAGE			0	100				2	100	200		
08 03.03 PHARMACY LAB	0	0	1200				1	1	1400	1400		20
08 03.04 DISPENSARY/STORAGE			0	100				1	200	200		

		MEDIUM HIGH SCHOOL - 900 capacity							SITE SPECIFIC - REACH!								
ROOM/SPACE		TEACHING STATIONS	AUXILIARY SPACES	SF EACH	TOTAL SF	SF TALLY	Traditional Students FTE	Special Education FTE	CTE Students FTE	TEACHING STATIONS	AUXILIARY SPACES	SF EACH	TOTAL SF	SF TALLY	Traditional Students FTE	Special Education FTE	CTE Students FTE
08	03.05	CLASSROOM	0	0	850					1	1	850	850				20
08.04 CTE HOMELAND SECURITY						0								1,600			
08	04.01	HOMELAND SECURITY LAB	0	0	1200				0	1	1	1200	1200				20
08	04.02	LAPTOP STORAGE (for homeland + crd)	0	0	200						2	200	400				
08.05 CTE CAREER RESEARCH & DVLPT (crd)						0								1,200			
08	05.01	CAREER RESEARCH & DVLPT. LAB	0	0	1000	0		0		1	1	1200	1200				20
08.06 CTE CONSTRUCTION TRADES						0								9,100			
08	06.01	HVAC LAB	0		3000				0	1	1	3000	3000				20
08	06.02	LOCKER ROOM		0	150						2	150	300				
08	06.03	TOOL STORAGE		0	200						2	200	400				
08	06.04	MATERIAL STORAGE		0	500						2	500	1000				
08	06.05	CARPENTRY LAB	0	0	3000				0	1	1	3000	3000				20
08	06.06	CONSTRUCTION TRADE CLASSROOM	0	0	600					0	2	600	1200				0
08	06.07	TEACHER OFFICE		0	100						2	100	200				
09 PHYSICAL EDUCATION																	
09.01 Physical Education						17,500								14,200			
09	01.01	GYMNASIUM	2	1	10000	10000		50		2	1	10000	10000			50	
09	01.02	AUXILIARY GYM		1	3500	3500				0	0	3500	0			0	
09	01.03	WRESTLING		1	2500	2500				1	1	2500	2500			25	
09	01.04	FITNESS/WEIGHT TRAINING		0	1500	0		0			0	1500	0			0	
09	01.05	DANCE/ACTIVITY ROOM	1	1	1500	1500		25		1	1	1500	1500			25	
09	01.06	DANCE STORAGE/CHANGING RM		1	200						1	200	200				
09	01.07	HEALTH CLASSROOM		0	850	0		0			0	850	0			0	
09.02 Support						4,525								4,525			
09	02.01	LOCKER ROOMS		2	700	1400					2	700	1400				
09	02.02	SHOWERS/TOILETS		2	200	400					2	200	400				
09	02.03	TEAM ROOMS		2	300	600					2	300	600				
09	02.04	PE TEACHER/COACH OFFICE		2	200	400					2	200	400				
09	02.05	COACH LOCKERS/TOILET		2	90	180					2	90	180				
09	02.06	ATHLETIC DIRECTOR OFFICE		1	120	120					1	120	120				
09	02.07	TRAINING / WHIRLPOOL		1	120	120					1	120	120				
09	02.08	LAUNDRY / TOWELS		1	100	100					1	100	100				
09	02.09	CONCESSION / TICKETS		1	100	100					1	100	100				
09	02.10	OUTDOOR STORAGE		1	200	200					1	200	200				
09	02.11	INDOOR STORAGE		1	350	350					1	350	350				
09	02.12	ATHLETIC STORAGE		1	250	250					1	250	250				
09	02.13	ADAPTIVE PE STORAGE		1	125	125					1	125	125				
09	02.14	OFFICIALS LOCKERS		2	90	180					2	90	180				
10 MEDIA																	
#### Media Center						4,975								4,975			
10	01.01	MEDIA ROOM		1	4000	4000					1	4000	4000				
10	01.02	OFFICE / WORKROOM		1	225	225					1	225	225				
10	01.03	A/V AND MAGAZINE STORAGE		1	100	100					1	100	100				
10	01.04	HEAD END ROOM		1	150	150					1	150	150				
10	01.05	HISTORIC COLLECTIONS		1	100	100					1	100	100				
10	01.06	GENERAL STORAGE		1	100	100					1	100	100				
10	01.07	PROJECT ROOM		3	100	300					3	100	300				
#### Communications						2,450								2,450			
10	02.01	TV / VIDEO STUDIO		1	800	800				1	1	800	800			25	
10	02.02	CONTROL / EDITING		1	150	150					1	150	150				
10	02.03	PUBLICATIONS LAB		1	450	450					1	450	450				
10	02.04	STORAGE		1	100	100					1	100	100				
10	02.05	GRAPHICS LAB	1	1	950	950		25		1	1	950	950			25	
11 FOOD SERVICES																	
11 Dining						4,200								4,200			
11	01.01	DINING		1	4000	4000					1	4000	4000				
11	01.02	FURNITURE STORAGE		1	200	200					1	200	200				
11 Food Service						2,890								2,890			
11	02.01	KITCHEN		1	800	800					1	800	800				
11	02.02	SERVING		3	250	750					3	250	750				
11	02.03	OFFICE		1	100	100					1	100	100				
11	02.04	WALK-IN FREEZER		1	175	175					1	175	175				

			MEDIUM HIGH SCHOOL - 900 capacity							SITE SPECIFIC - REACH!								
ROOM/SPACE			TEACHING STATIONS	AUXILIARY SPACES	SF EACH	TOTAL SF	SF TALLY	Traditional Students FTE	Special Education FTE	CTE Students FTE	TEACHING STATIONS	AUXILIARY SPACES	SF EACH	TOTAL SF	SF TALLY	Traditional Students FTE	Special Education FTE	CTE Students FTE
11	02.05	WALK-IN CHILLER		1	175	175						1	175	175				
11	02.06	DRY STORAGE		1	250	250						1	250	250				
11	02.07	DISH ROOM / TRAY RETURN		1	300	300						1	300	300				
11	02.08	SOAP STORAGE		1	50	50						1	50	50				
11	02.09	CAN WASH		1	50	50						1	50	50				
11	02.10	LOCKER / TOILET		1	120	120						1	120	120				
11	02.11	RECEIVING		1	120	120						1	120	120				
12 BUILDING SERVICES																		
12.01 Maintenance/Operations			1,430							1,370								
12	01.01	RECEIVING		1	200	200						1	200	200				
12	01.02	CENTRAL STORAGE		1	250	250						1	250	250				
12	01.03	OPERATIONS OFFICE		1	140	140						1	140	140				
12	01.04	LOCKERS/SHOWERS/TOILETS		1	120	120						1	120	120				
12	01.05	SECURITY OFFICE		1	120	120						1	120	120				
12	01.06	CUSTODIAL CLOSET		5	60	300						4	60	240				
12	01.07	RECYCLING		1	200	200						1	200	200				
12	01.08	OUTDOOR STORAGE		1	100	100						1	100	100				
12.02 Toilet			400							400								
12	02.01	STAFF TOILET		8	50	400						8	50	400				
13 COMMUNITY SPACE																		
##### Family Resource Suite			280							280								
13	01.01	FAMILY RESOURCE ROOM		1	150	150						1	150	150				
13	01.02	OFFICE		1	80	80						1	80	80				
13	01.03	TOILET		1	50	50						1	50	50				
##### Out of School Time Support			230							230								
13	02.01	STORAGE		1	100	100						1	100	100				
13	02.02	PANTRY		1	50	50						1	50	50				
13	02.03	OFFICE		1	80	80						1	80	80				
##### Service			280							280								
13	03.01	PANTRY		1	80	80						1	80	80				
13	03.02	PERSONAL CARE		1	100	100						1	100	100				
13	03.03	LAUNDRY		1	100	100						1	100	100				
Total Capacity			0							0								
Total Teaching Stations			39							44								
Total Net Square Footage			96,935							103,475								
TOTAL GROSS AREA			135,709							144,865								
IAC/PSCS SRC Guidelines			TS SP CTE							TS SP CTE								
Capacity Totals			925 20 0							800 50 140								
Utilization adjustments - 85%/IAC for standard TS			786 20 0							680 50 140								
TOTAL SRC			806							870								

M. APPENDIX



BCPS No. 456

SHEET No. 1 of 6

Fairmount-Harford Building

2555 Harford Road

Baltimore, Maryland 21218

BALTIMORE CITY PUBLIC SCHOOLS

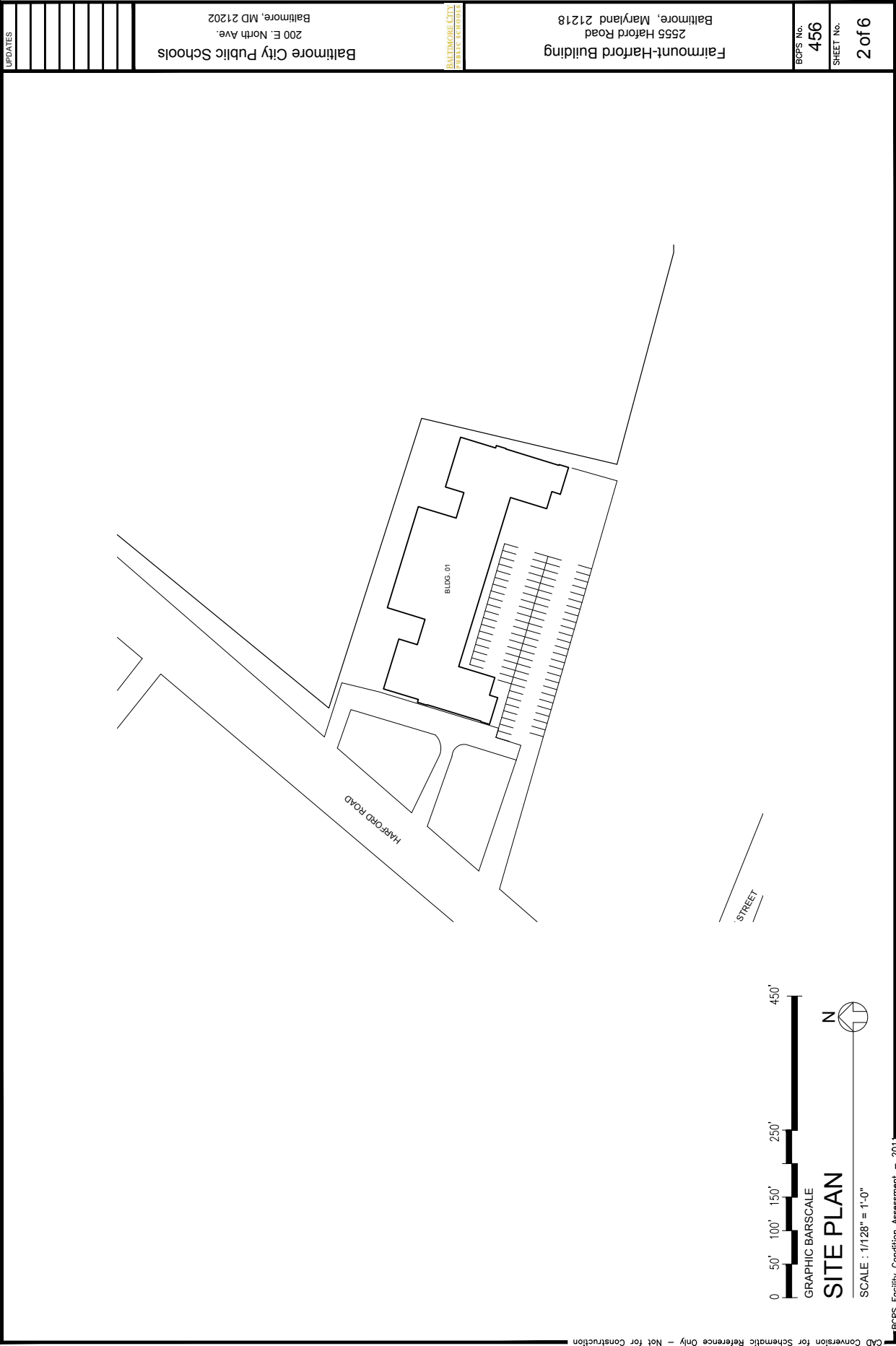
Baltimore City Public Schools

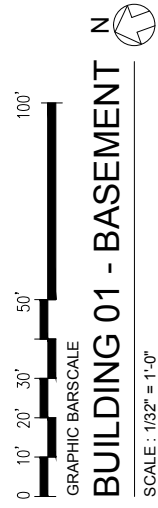
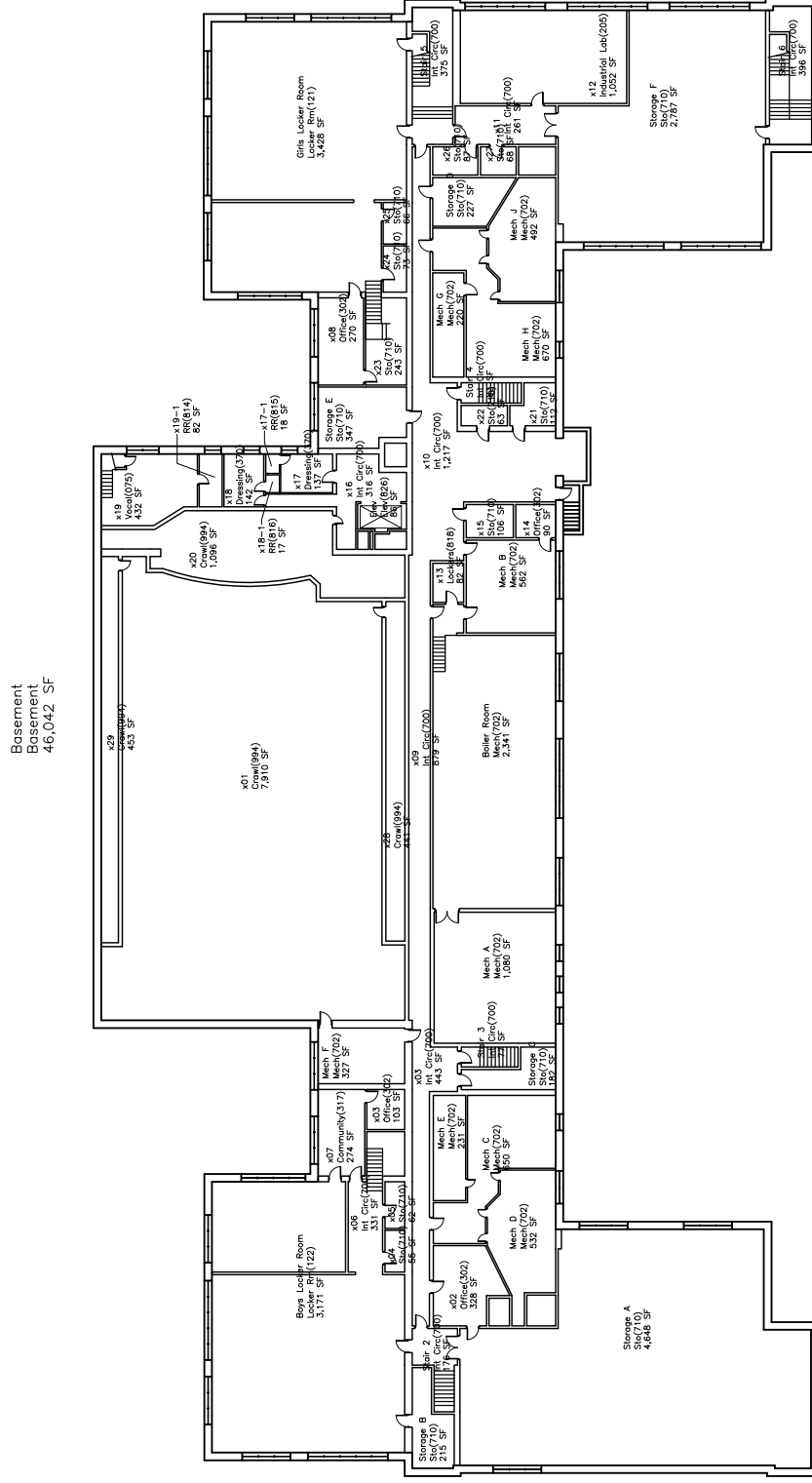
200 E. North Ave.

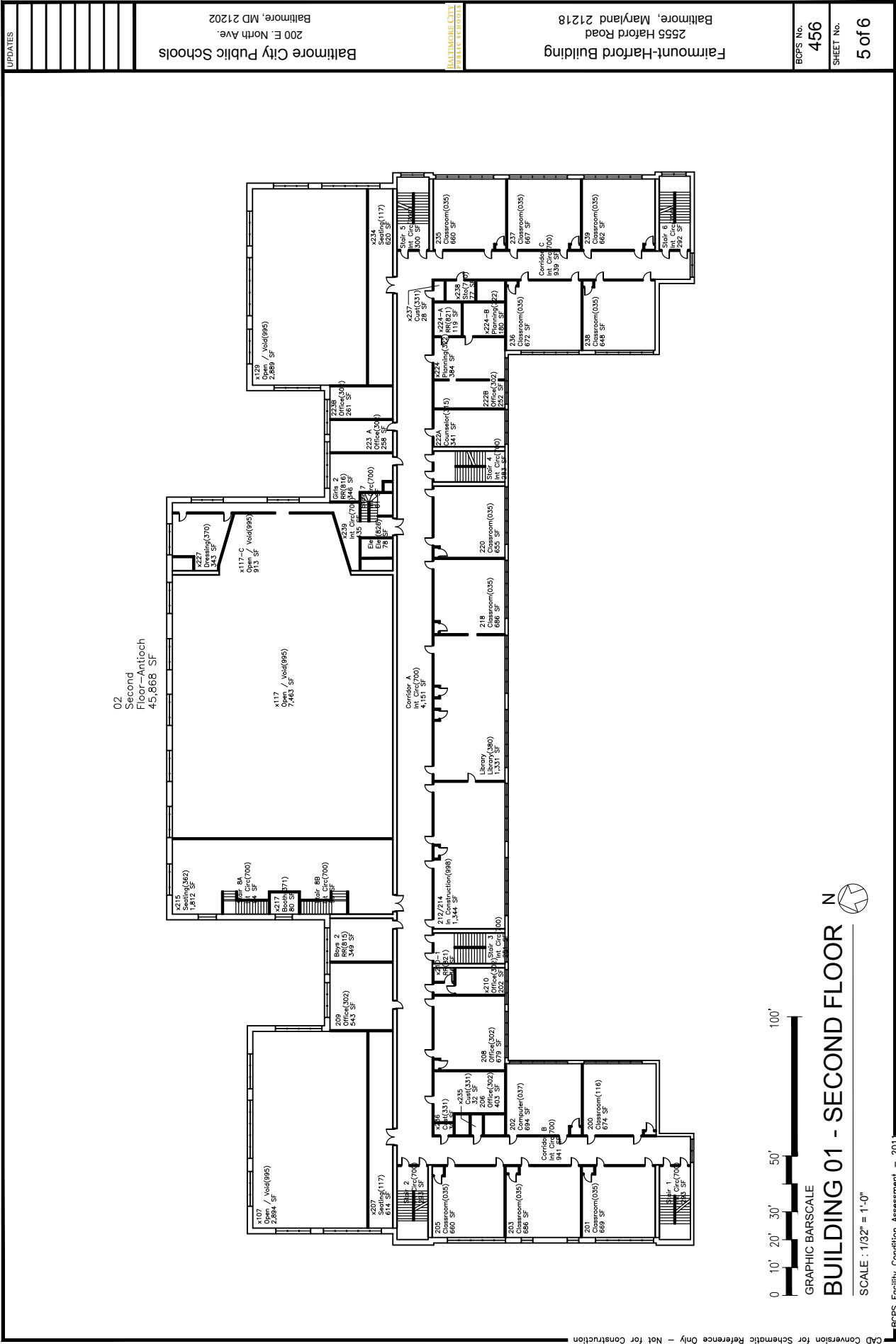
Baltimore, MD 21202

UPDATES

File Name: 456 Fairmount-Harford Building.dwg





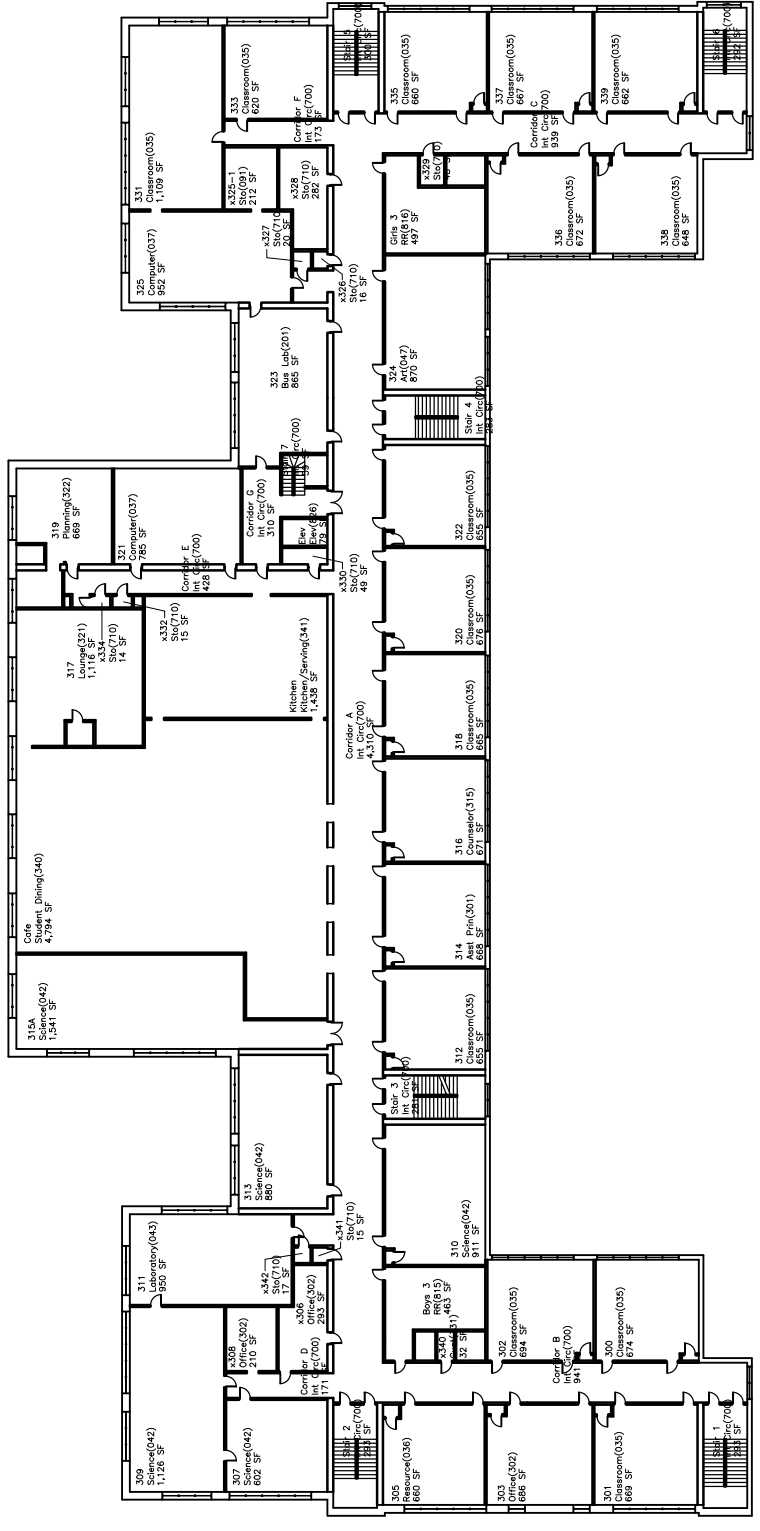




GRAPHIC BARSCALE
BUILDING 01 - THIRD FLOOR
SCALE : 1/32" = 1'-0"



03
Third Floor
45,868 SF



Fairmount-Harford Building 2555 Harford Road Baltimore, Maryland 21218		BCPS No. 456	6 of 6
Baltimore City Public Schools 200 E. North Ave. Baltimore, MD 21202		SHEET No.	
BALTIMORE CITY PUBLIC SCHOOLS			
File Name: 456 Fairmount-Harford Building.dwg			

UPDATES