



21st CENTURY SCHOOLS
BALTIMORE



21st Century School Buildings Program

Frederick Douglass High School and Joseph C. Briscoe Academy

COMMUNITY MEETING Construction Update #1

December 9, 2024

BALTIMORE CITY
PUBLIC SCHOOLS



Introductions

Cyndi Smith

Executive Director
Facilities Planning, Design & Construction
City Schools

Ivy McNeill

Sr. Program Coordinator, Community Engagement
City Schools

Fred Mason

Design Director, Operations
City Schools

Tyler Dumont

21st Century School Buildings Program
Project Manager
Maryland Stadium Authority

Chad Carter

21st Century School Buildings Program
Assistant Project Manager
Maryland Stadium Authority

Amy McCarty, AIA, LEED AP

Samaha Associates

Josh Stewart

Project Manager
Dustin Construction

Agenda

Overview & Introductions

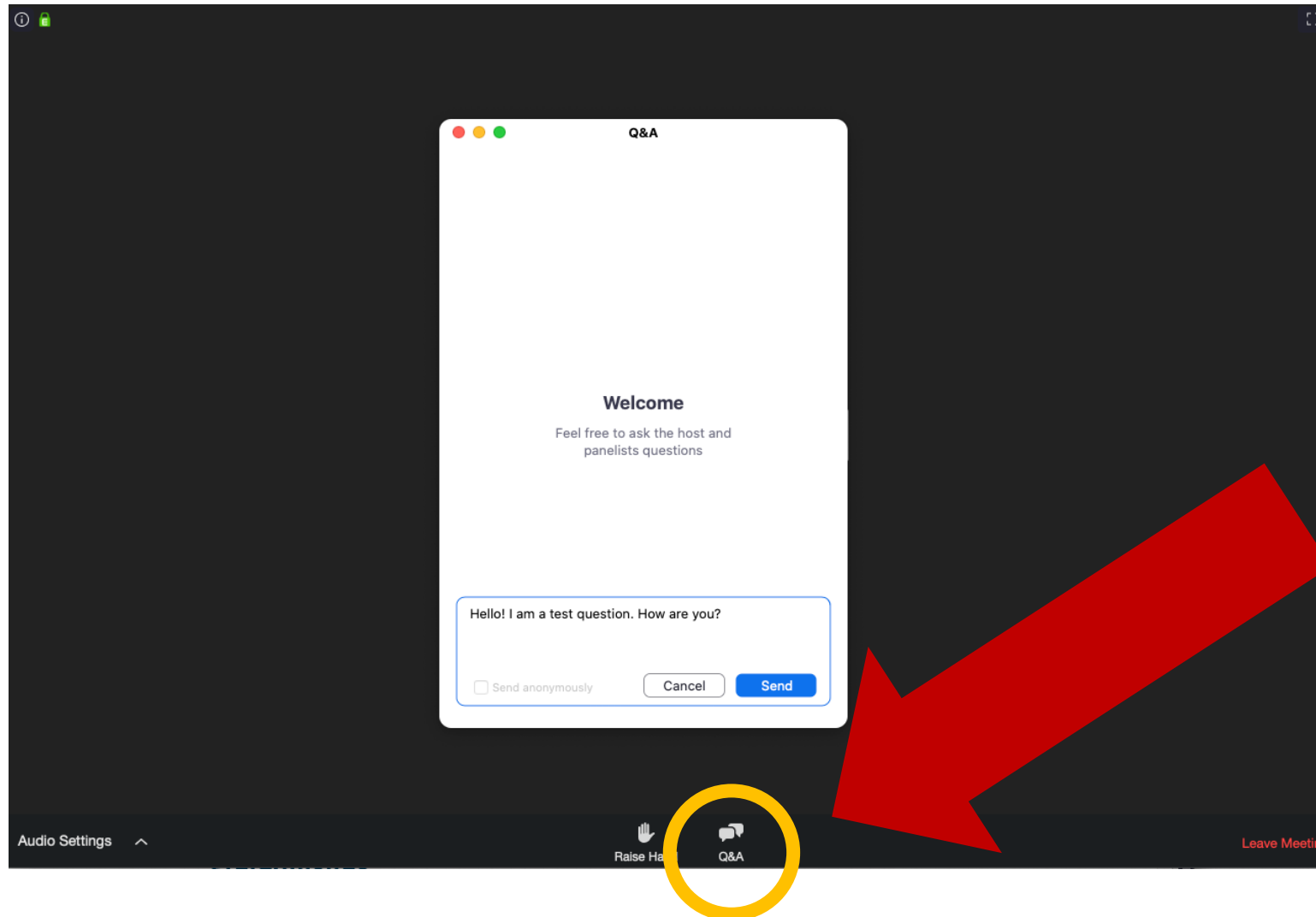
Design Development (Recap)

- . Site Design
- . Exterior Design
- . Interior Design

Construction

- . Community/Security
- . Site Utilization Plan
- . Progress Updates
- . Upcoming Dates

Questions and Comments



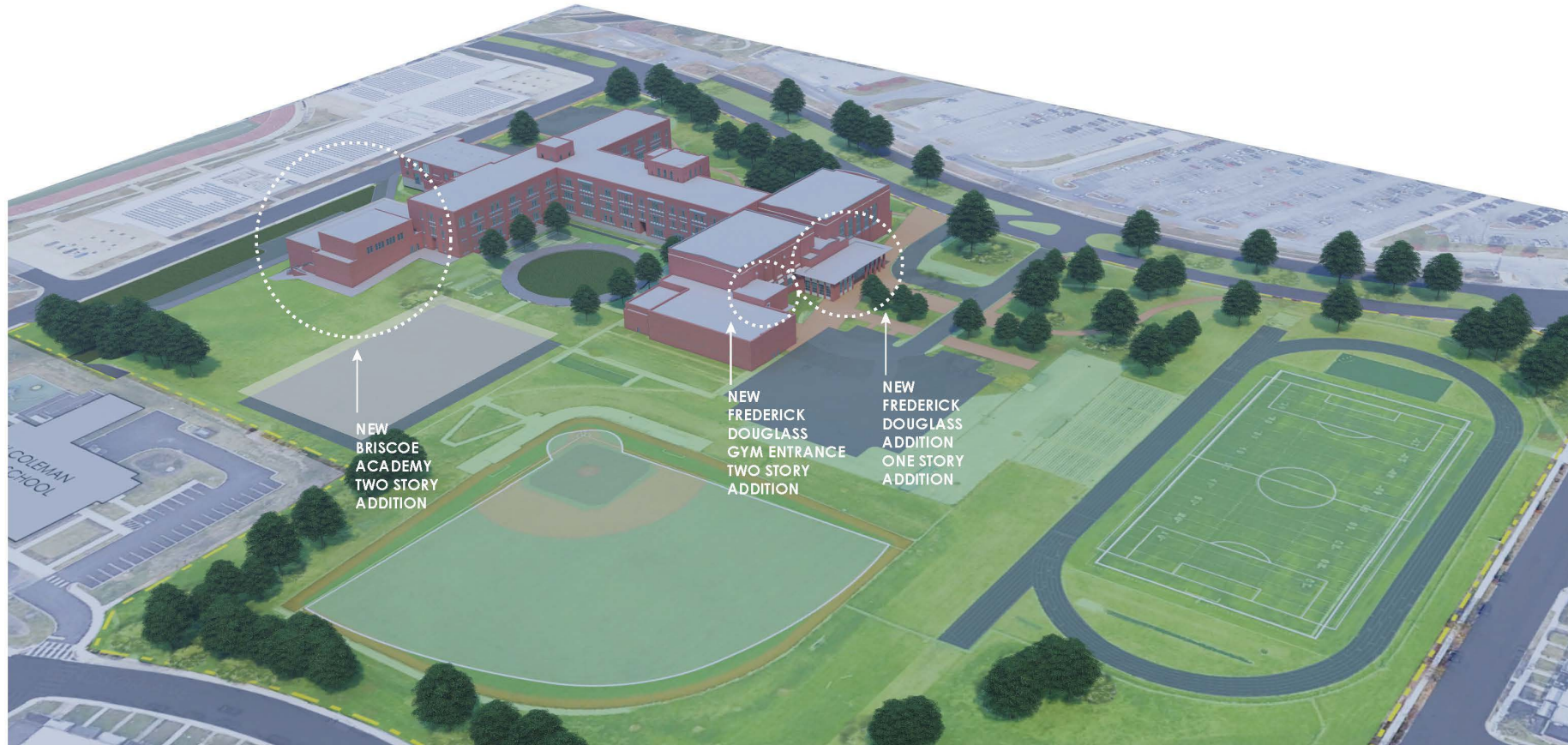
Please use the Q&A feature at the bottom of the Zoom screen to submit questions.

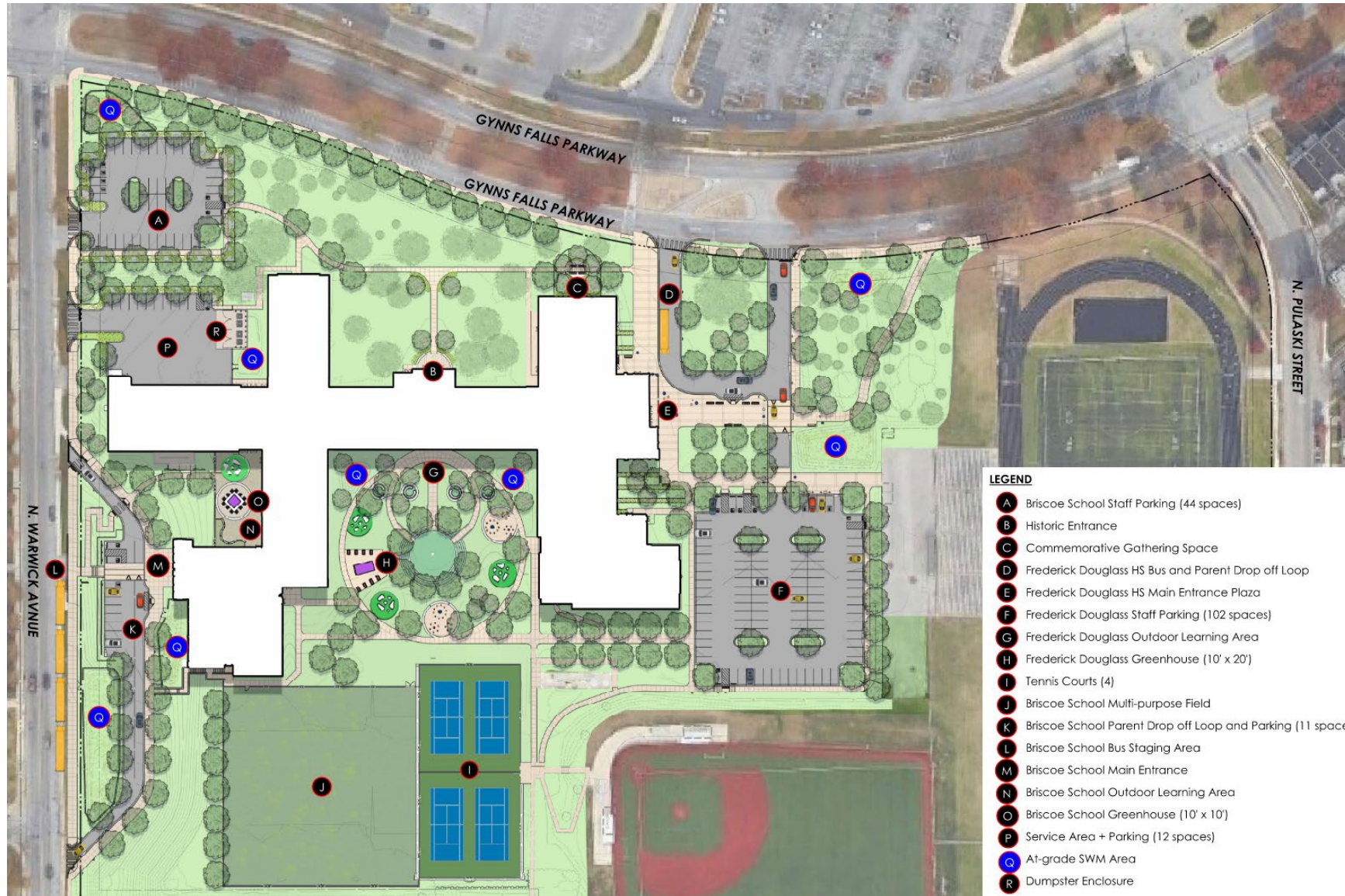
We will address questions at the end of the meeting.

- The building total gross square footage is 249,393.
- The total school capacity is 1,214 students:
 - 1,104 Frederick Douglass High School
 - 110 Briscoe Academy
- The existing building will be fully renovated and modernized.
- There will be three additions:
 - one housing part of the Briscoe Academy
 - the new Frederick Douglass High School entrance
 - the new Frederick Douglass gym entrance



Community Meeting: Construction Update | Frederick Douglass – Briscoe | December 9th, 2024
baltimore21stcenturyschools.org



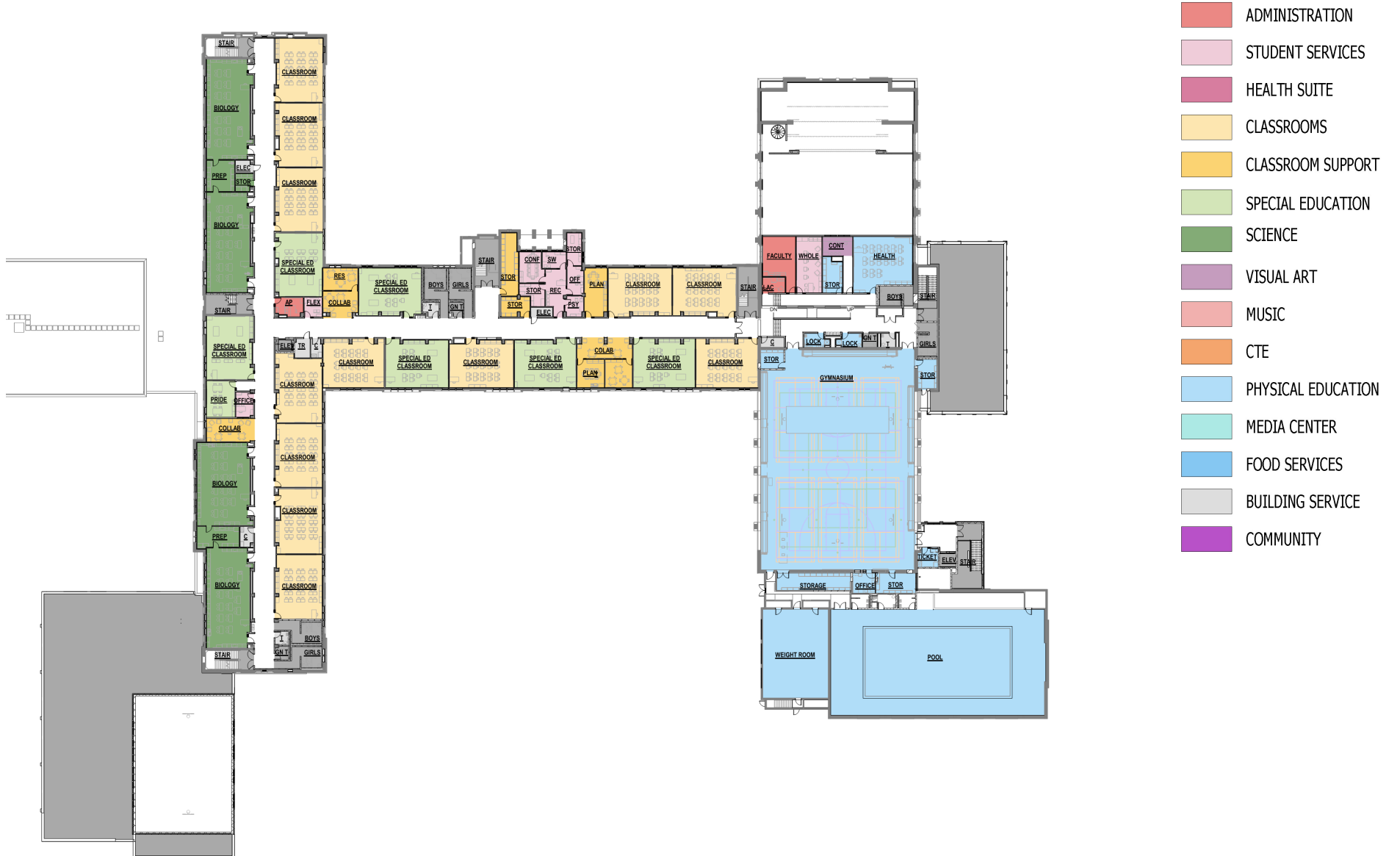


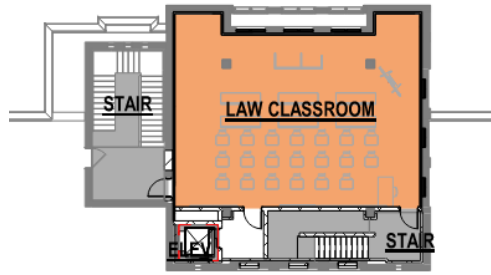


OVERALL FLOOR PLAN - BASEMENT FLOOR
1/11 1" = 20'-0"

Proposed First Floor Plan







Fourth Floor Plan



- ADMINISTRATION
- STUDENT SERVICES
- HEALTH SUITE
- CLASSROOMS
- CLASSROOM SUPPORT
- SPECIAL EDUCATION
- SCIENCE
- VISUAL ART
- MUSIC
- CTE
- PHYSICAL EDUCATION
- MEDIA CENTER
- FOOD SERVICES
- BUILDING SERVICE
- COMMUNITY



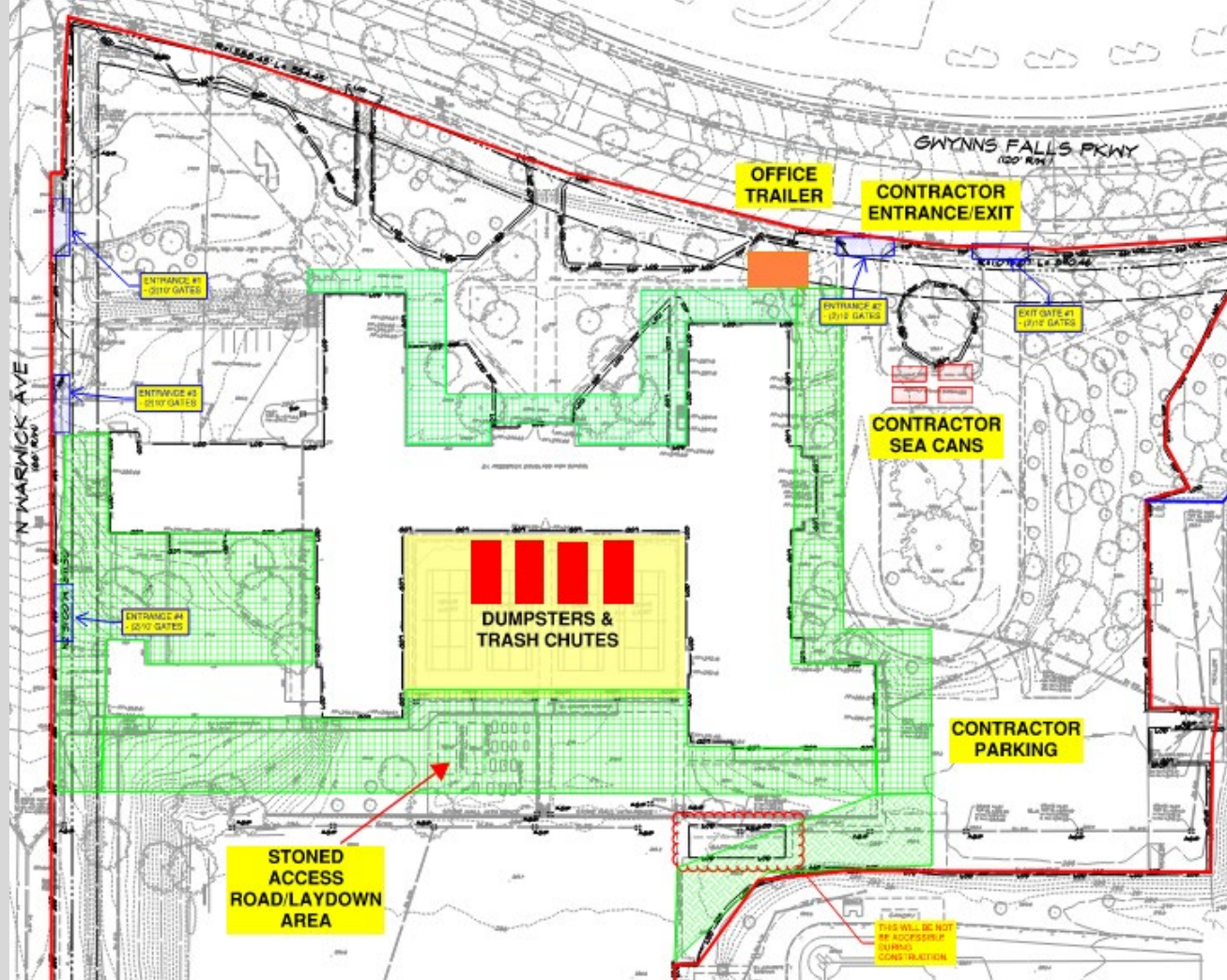






- Safety of all is paramount
 - Security Fencing
 - Cameras/Monitoring system
- Being a good neighbor
 - Cleanliness, trash pick-up onsite
 - Wash rack at construction entrances
- Sediment Control and Runoff
 - Silt fence and controls

Standard Work Hours | Monday – Friday | 6:30 a.m. – 4p.m.



Traffic/deliveries will enter/exit jobsite at both N. Warwick Ave. and Gwynns Falls Parkway.













Project Schedule: Milestones

- MEPS Rough-ins.....December 2024**
- Interior Framing.....December 2024**
- Smokestack Demo.....January 2025**
- Earthwork.....January 2025**
- RoofingJanuary 2025**
- Interior Masonry.....January 2025**
- Site Utilities.....February 2025**
- Building Concrete.....February 2025**



QUESTIONS
&
ANSWERS

If you have questions, comments, or feedback please contact the Engagement Team. It is City Schools' goal for this to be an open and inclusive process.

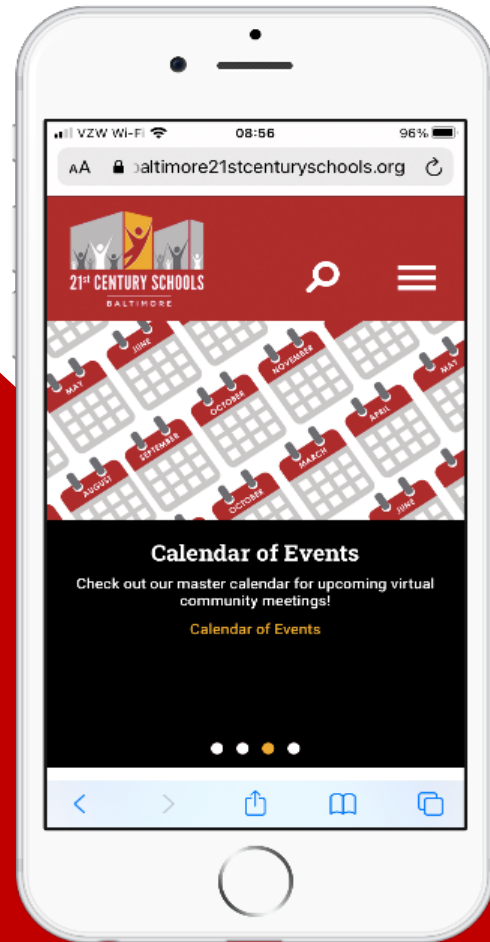


Ivy McNeill

Sr. Community & Public Relations Coordinator

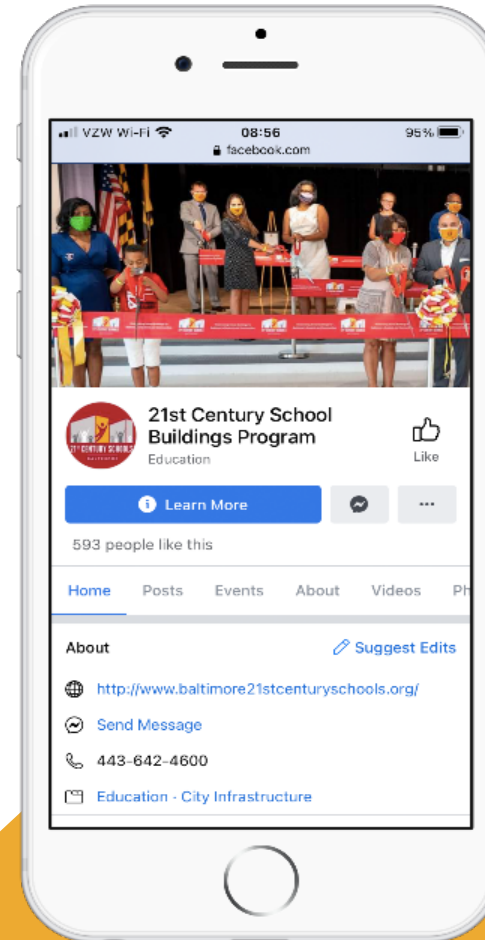
idmcneill01@bcps.k12.md.us

WEBSITE



baltimore21stcenturyschools.org

SOCIAL MEDIA



@21stCenturySchoolBuildingsProgram



Thank You.

This presentation was brought to you by the 21st Century School Buildings Program.

www.baltimore21stcenturyschools.org

Baltimore City Public Schools

200 East North Avenue

Room 407-B

Baltimore MD 21202

(443) 642-4600

**BALTIMORE CITY
PUBLIC SCHOOLS**

