



# 21<sup>st</sup> Century School Buildings Program

Commodore John Rodgers Elementary/Middle School  
COMMUNITY MEETING – CONSTRUCTION UPDATE

September 26, 2024



Presenters	Agenda
<p><b>Anthony Peña</b> Acting Director Community Engagement and Public Relations 21<sup>st</sup> Century School Buildings Program</p> <p><b>Ivy McNeill</b> Senior Program Coordinator Community Engagement and Public Relations 21<sup>st</sup> Century School Buildings Program</p> <p><b>Cyndi Smith</b> Executive Director – Facilities Planning, Design, and Construction Baltimore City Schools</p> <p><b>Charlie Ravenna</b> Project Director Maryland Stadium Authority</p> <p><b>Construction Manager</b> CAM Construction</p>	<ul style="list-style-type: none"> <li>• Project Updates</li> <li>• Site Plan</li> <li>• Floor Plans</li> <li>• Renderings</li> <li>• Transportation Updates</li> <li>• Q&amp;A</li> </ul>





- The State of Maryland Board of Public Works (BPW) approved the Pre-Construction Services Contract to CAM Construction for Construction Manager (CM) Pre-Construction Services Contract on August 7, 2024. CAM Construction has served as construction manager on several other 21st Century School Buildings projects:
  - Robert Poole Building
  - Bay-Brook Elementary/Middle School
  - Highlandtown Elementary/Middle School
  - Montebello Elementary/Middle School



- The CM has bid the early release trade packages, which includes:
  - Demolition (including hazmat/abatement)
  - Sitework
  - Concrete
  - The initial mechanical, electrical, and plumbing packages
- These early packages are being presented to the Board of Public Works for approval on October 2, 2024.
- Upon approval of the early-phase contract, the CM will mobilize the contractors to the site to begin the demolition phase in mid-October. Maryland Stadium Authority (MSA) assumes control of the site on September 16, 2024.
- The CM is currently bidding the all remaining trade packages, for presentation to BPW for approval in December 2024

Abatement then Demolition Start:	Mid-Oct 2024 based on 10/2/2024 Approval*
Building Construction Start:	Spring 2025 based on December 2024 Approval*
Substantial Completion:	November 2026*
Occupancy:	December 2026*

*\* Dates listed are based on a projected schedule and are subject to change.*



### Site Features

- Main entrance on N. Washington Ave. – provides bus and vehicular access at main entrance location
- Secure play area from northeast neighborhood at N. Chester Street

### Safety & Security

- Defined main entrance at bus and parent drop-off
- Three separate and secured play areas
- Dedicated staff, visitor, and community parking totaling 34 spaces

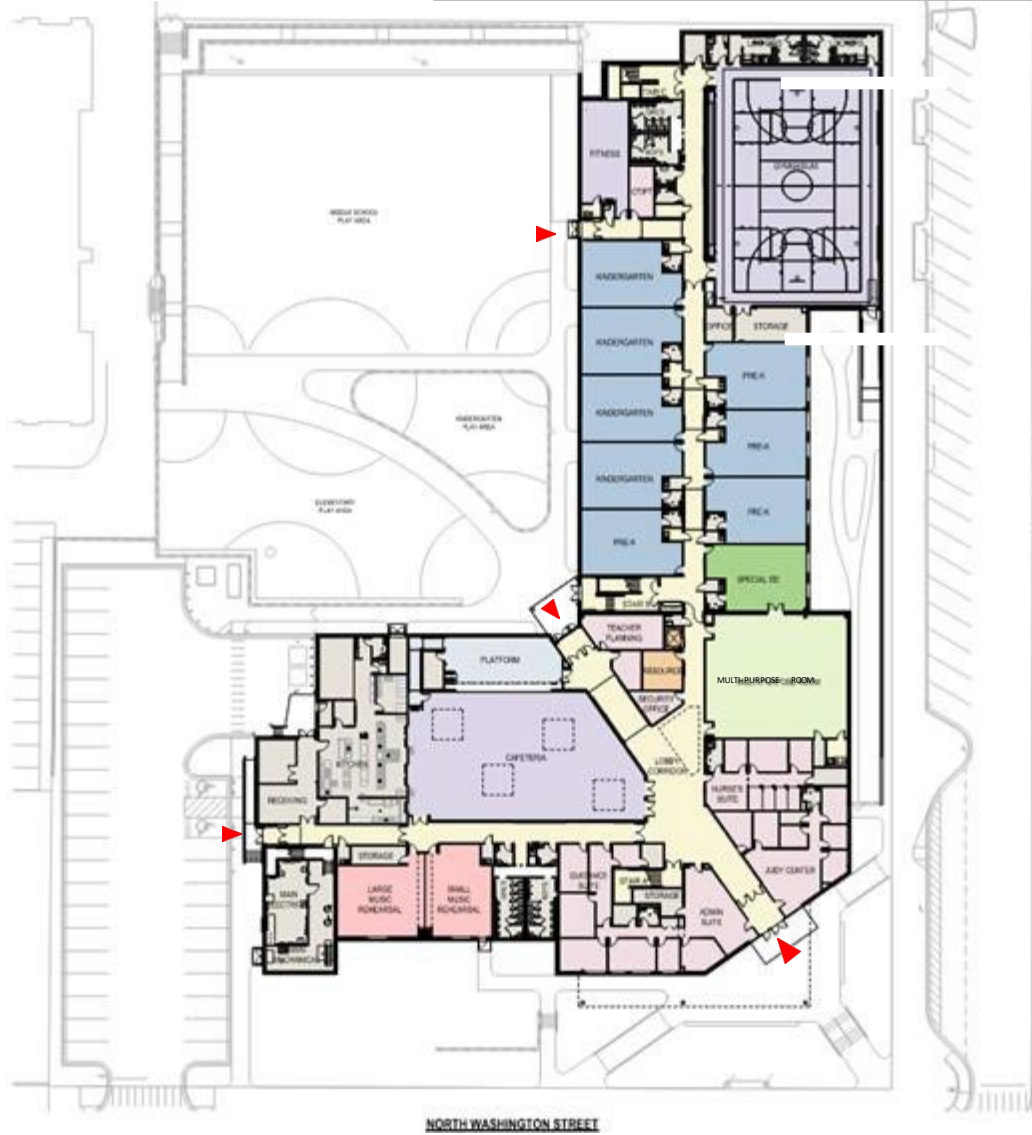
### Site Opportunities

- Re-oriented building and site to optimize use of available space

### Pedestrian Circulation & Community Connectivity

- Main entrance and parking provide access to all community support spaces.





- Pre-K-Kindergarten grades
- Special education classroom
- Music classrooms
- Multi-Purpose Room
- Gym/Fitness and support spaces
- Cafetorium/Platform
- Teacher Planning
- Administration
- Guidance
- Health suite
- Family resource room
- Judy Center

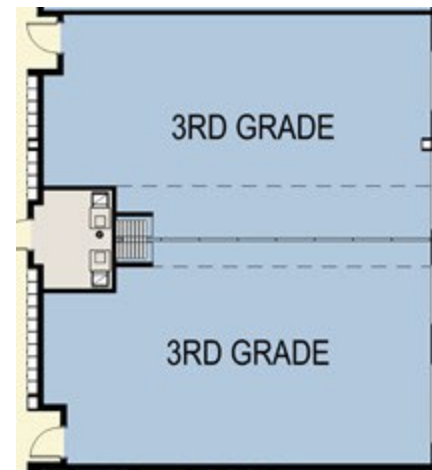


First Floor GSF: 53,43 SF  
Overall SF: 118,073 SF

Commodore John Rodgers E/MS  
Community Meeting | Construction Update  
September 26, 2024



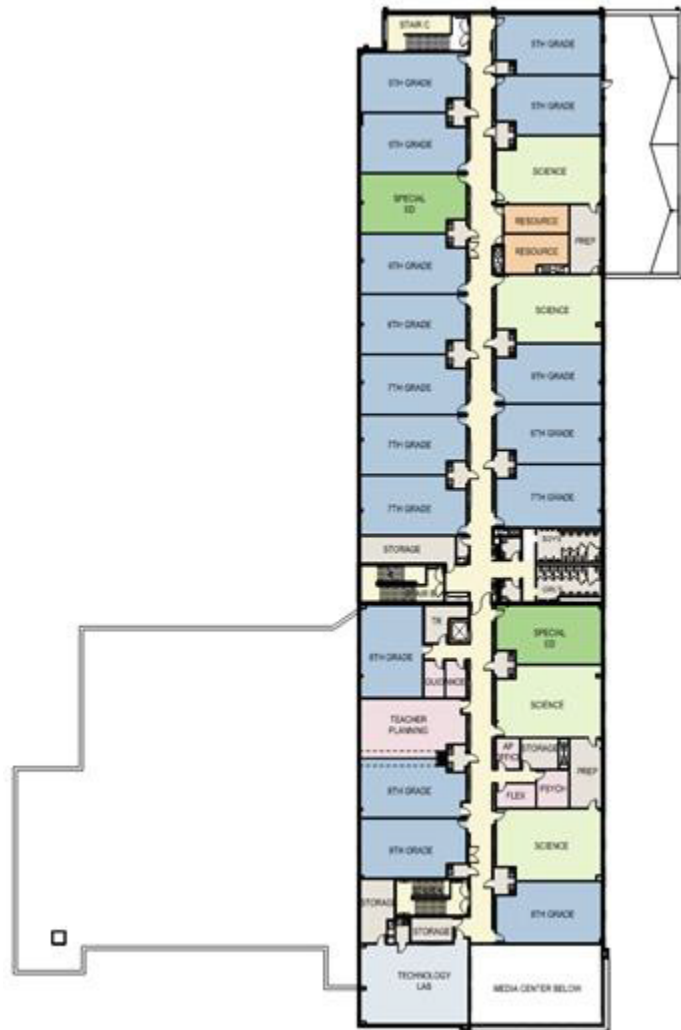
- Grades 1-4
- Special education classroom
- Speech
- Art classrooms
- Media center/Video room
- Flexible Classroom opportunity



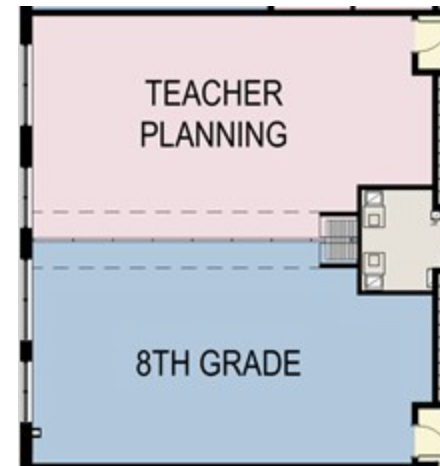
Second Floor GSF: 31,858 SF  
 Overall SF: 118,073 SF

Commodore John Rodgers E/MS  
 Community Meeting | Construction Update  
 September 26, 2024





- Grades 5-8
- Special education classrooms
- Science classrooms
- Technology lab
- Resource rooms
- Flexible Teacher Planning



Third Floor GSF: 32,802 SF  
Overall SF: 118,073 SF

Commodore John Rodgers E/MS  
Community Meeting | Construction Update  
September 26, 2024









CR





CR



CR

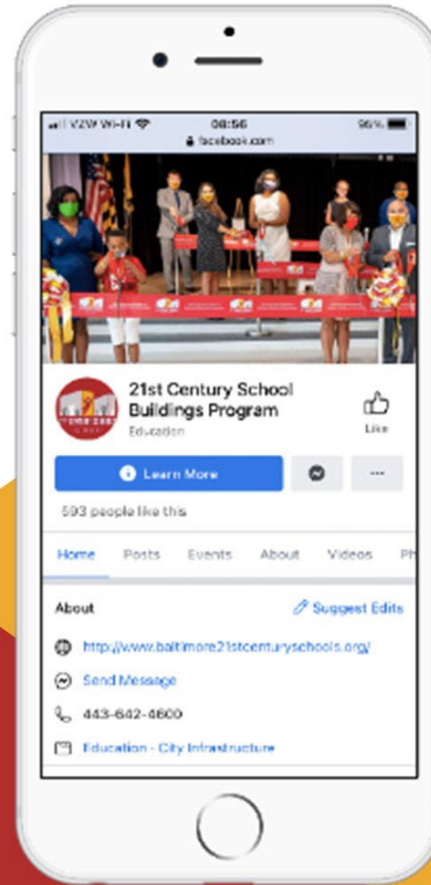
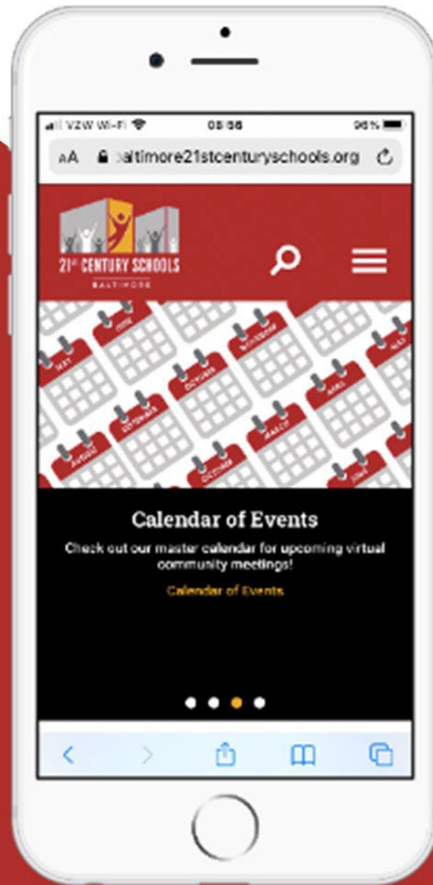


- Starting September 30, buses to and from the Southeast Building will pick up and drop off from a new location on N. Washington Street
- The new bus hub location will be on N. Washington Street just north of E. Fayette Street, as pictured on the map to the right



Baltimore21stCenturySchools.org

FaceBook.com/  
21stCenturySchoolBuildingsProgram





# Questions?

---

## Program Contacts

**Sr. Community & Public Relations Coordinator**

**Ivy McNeill**

idmcneill01@bcps.k12.md.us

**Director Community Engagement & Public Relations**

**Anthony Peña**

apena@bcps.k12.md.us

---

## Program Information

**21<sup>st</sup> Century School Buildings Program Office**

(443) 642-4600



21stCSBaltimore



21stCenturySchoolBuildingsProgram



21stCSBaltimore

Survey

Scan to Participate



## Thank You.

This presentation was brought to you by the Baltimore City Schools Operations Department.



Commodore John Rodgers E/MS  
Community Meeting | Construction Update  
September 26, 2024

## Baltimore City Public Schools

200 East North Avenue Room 407-B  
Baltimore MD 21202  
(443) 642-4600

[www.baltimore21stcenturyschools.org](http://www.baltimore21stcenturyschools.org)

BALTIMORE CITY  
PUBLIC SCHOOLS

