



## 21<sup>st</sup> Century School Buildings Plan

**SCHOOL** Frederick Douglass High School and Joseph C. Briscoe Academy  
**COMMUNITY MEETING** Schematic Design | July 5, 2023

BALTIMORE CITY  
PUBLIC SCHOOLS



### Introductions

**Cyndi Smith**

Executive Director  
Facilities Planning, Design & Construction  
City Schools

**Renee Stainrod**

Manager, Community & Public Relations  
City Schools

**Ivy McNeill**

Sr. Program Coordinator, Community Engagement  
City Schools

**Fred Mason**

Design Director, Operations  
City Schools

**Tyler Dumont**

21<sup>st</sup> Century School Buildings Program  
Project Manager  
Maryland Stadium Authority

**F. Thomas Lee, AIA, LEED AP**

**Amy McCarty, AIA, LEED AP**  
Samaha Associates

### Agenda

Project Overview

Review Proposed Site Plan Layout

Review Proposed Floor Plans

Review Concept Images of Proposed

New Entrance to Frederick Douglass

Questions and Comments

Design Workgroup





Co-locate Frederick Douglass High School and Joseph C. Briscoe Academy on the existing Frederick Douglass Campus



Full renovation of the existing Frederick Douglass building to accommodate the Baltimore City Schools 21<sup>st</sup> Century Educational Specifications



Improve site circulation for cars, buses, and pedestrians and provide safe access for each schools with their own unique identity on the campus



Improve security on site and in the building for staff and students



Improve building systems for better energy performance and occupant comfort



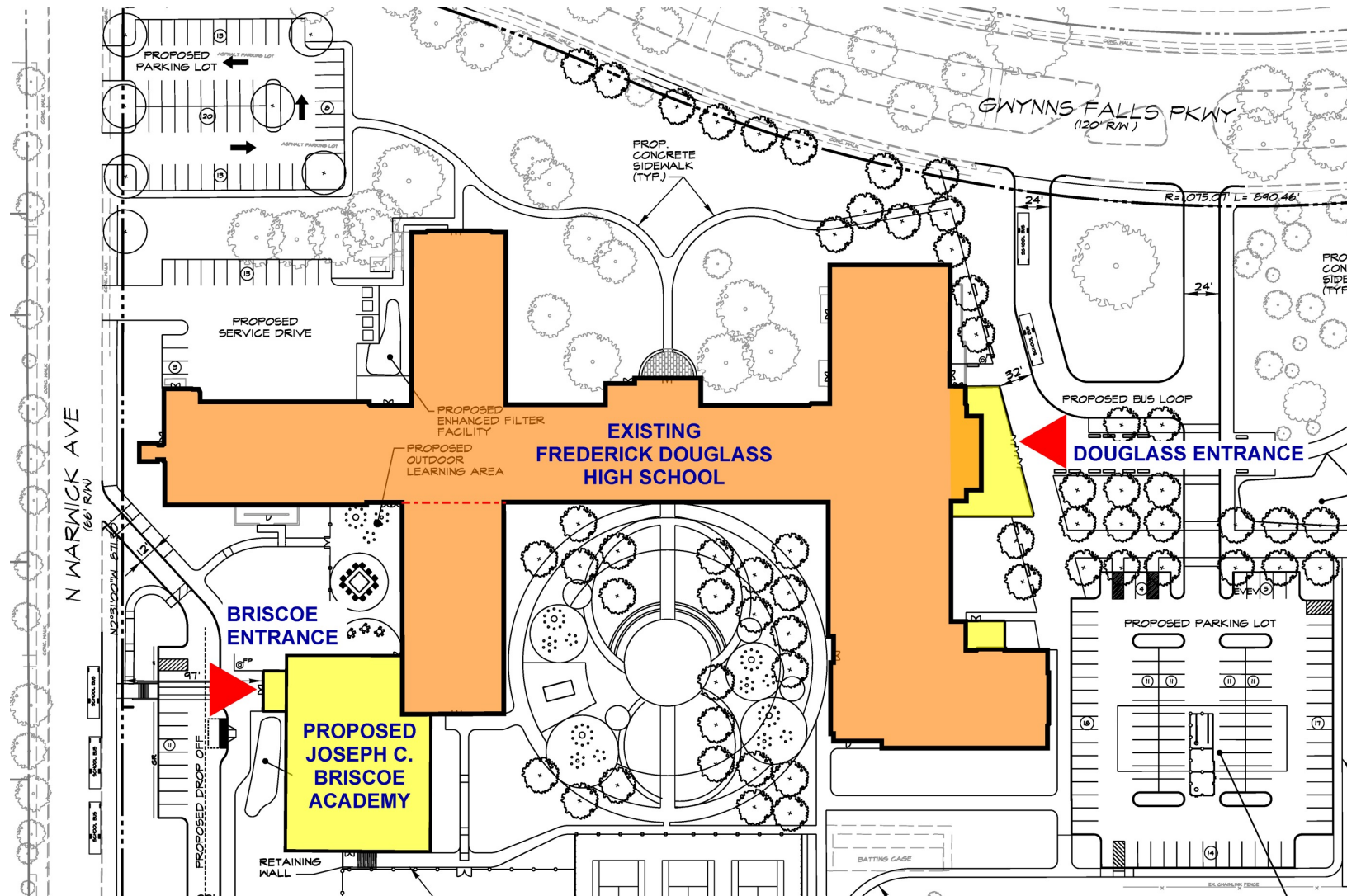
Provide secure entrance vestibule for both schools

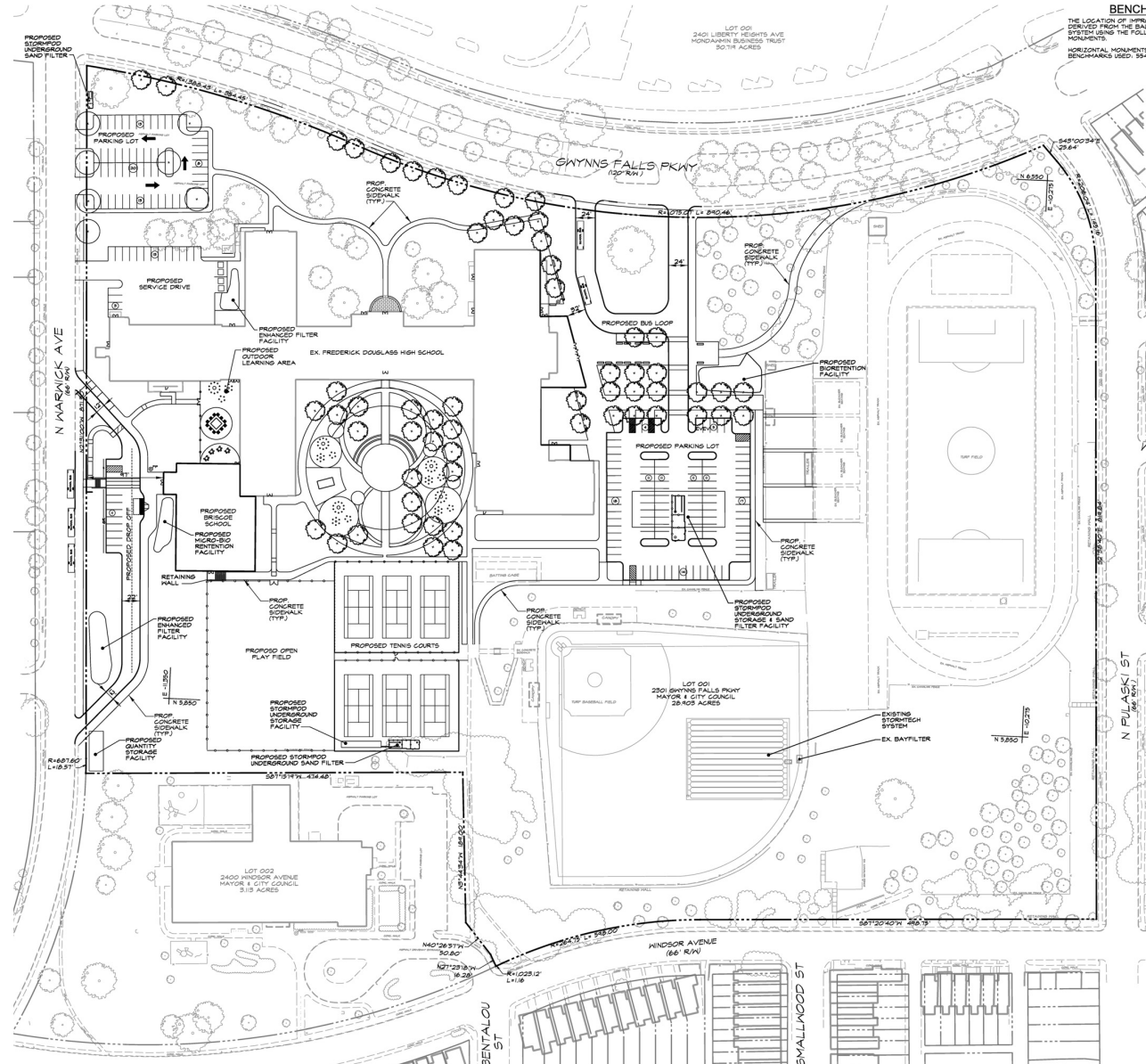


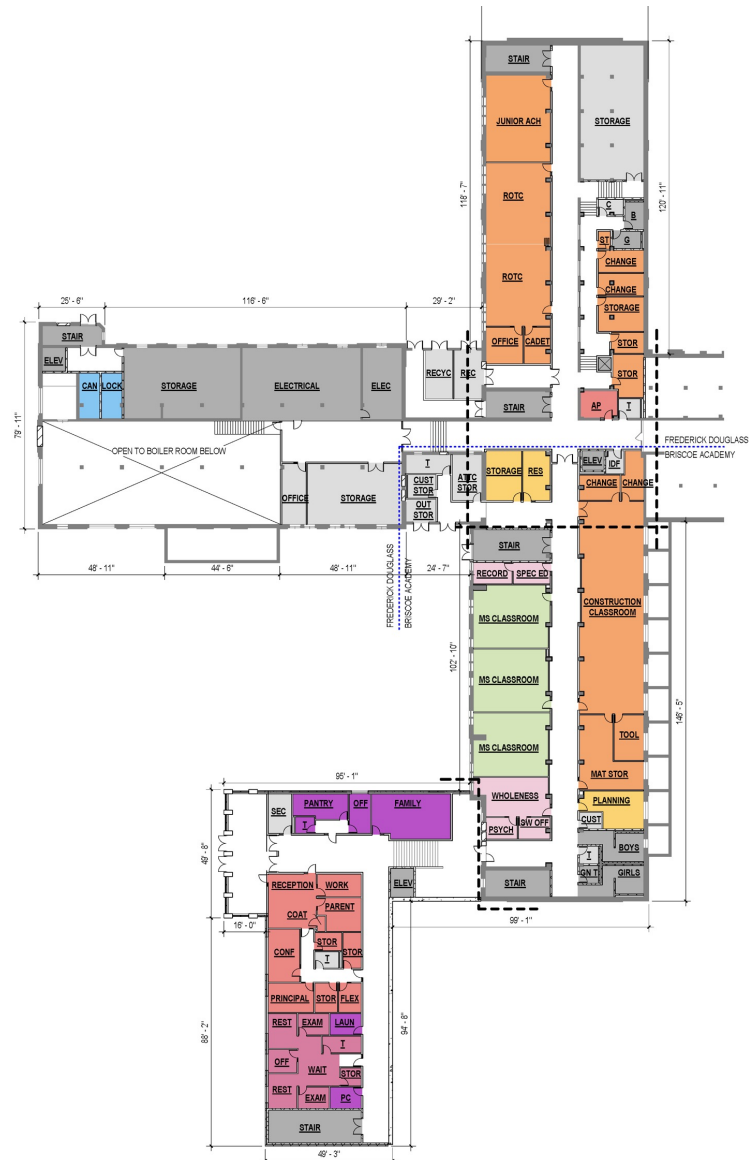
Respect the historic architecture of the existing building
















	EXISTING AREA	NEW AREA	UNPROGRAMMED AREA
BOILER	0 SF	0 SF	8,974 SF
GROUND	26,990 SF	9,028 SF	3,390 SF
FIRST	81,019 SF	15,422 SF	0 SF
SECOND	52,925 SF	0 SF	0 SF
THIRD	56,767 SF	0 SF	0 SF
FOURTH	2,997 SF	0 SF	0 SF
TOTAL	234,936 SF	22,141 SF	15,754 SF
EXISTING & NEW AREA = 257,077 SF			







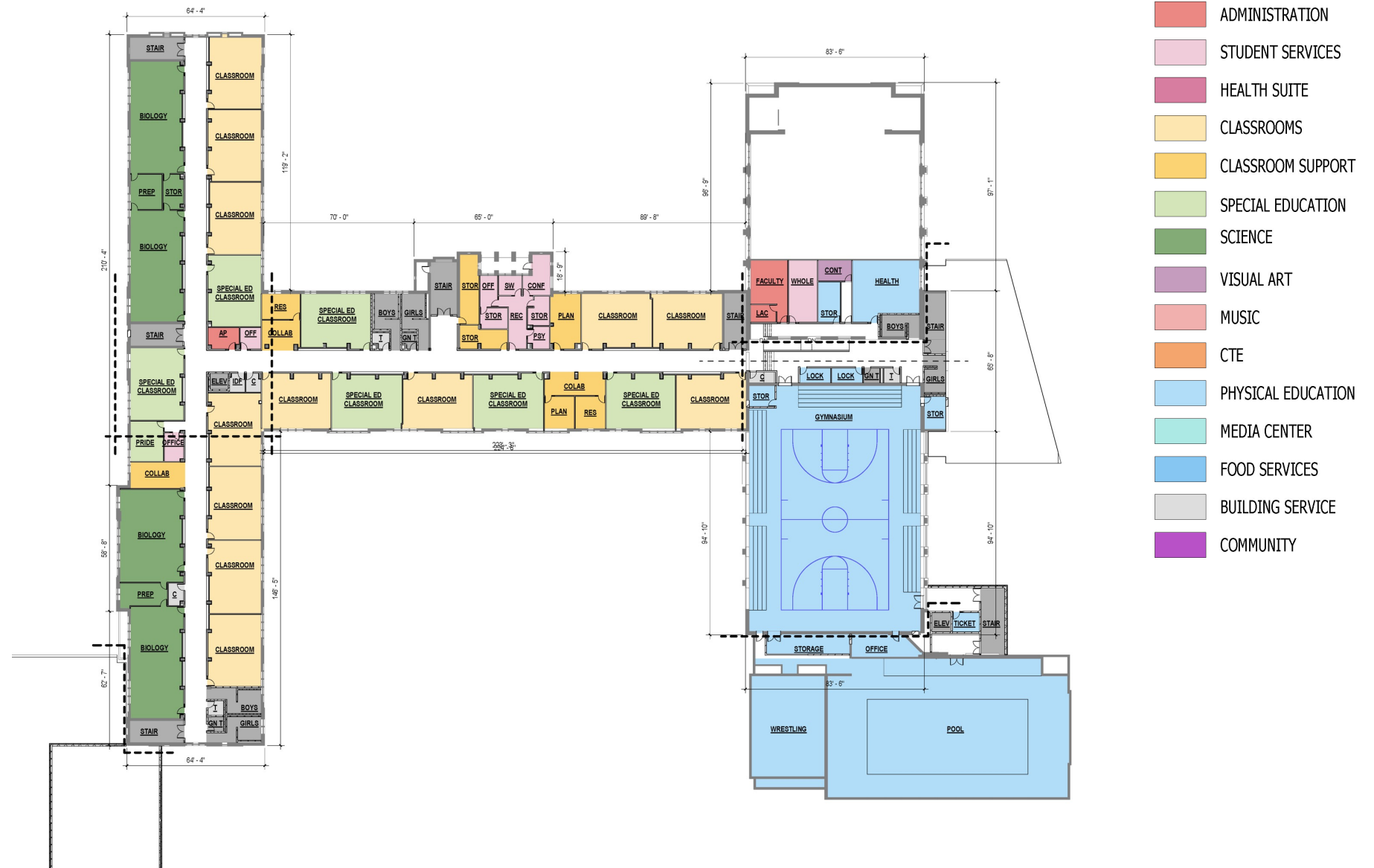


- |   |                    |
|---|--------------------|
|  | ADMINISTRATION     |
|  | STUDENT SERVICES   |
|  | HEALTH SUITE       |
|  | CLASSROOMS         |
|  | CLASSROOM SUPPORT  |
|  | SPECIAL EDUCATION  |
|  | SCIENCE            |
|  | VISUAL ART         |
|  | MUSIC              |
|  | CTE                |
|  | PHYSICAL EDUCATION |
|  | MEDIA CENTER       |
|  | FOOD SERVICES      |
|  | BUILDING SERVICE   |
|  | COMMUNITY          |



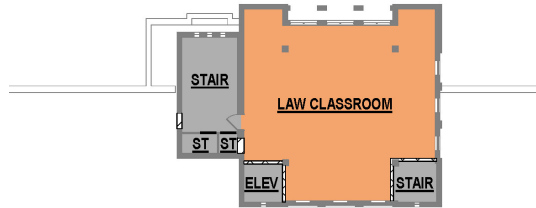
## Proposed First Floor Plan



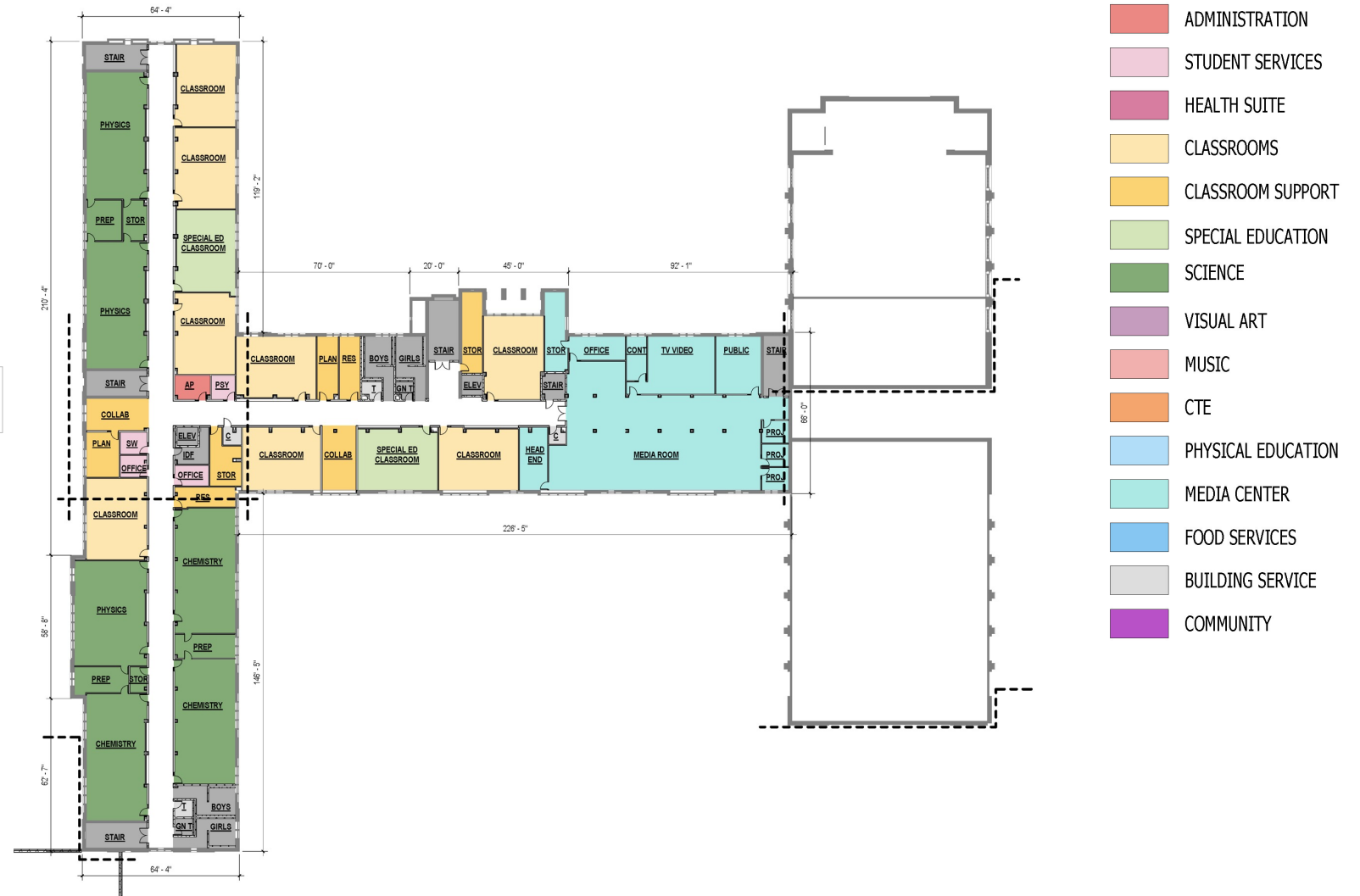


# Design

## Proposed Third Floor Plan



## Proposed Fourth Floor Plan





















Planning: 6-8 months

Pre-Design: 2-4 months  
18-24 months

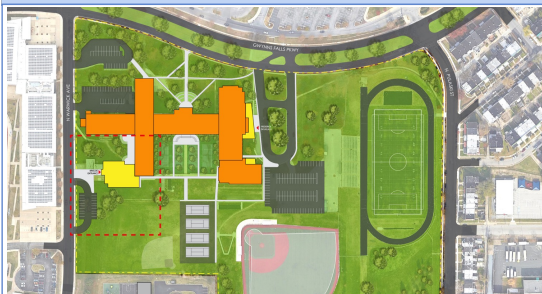
Design: 10-12 months



\*Dates subject to change

Meeting #1

**Schematic**



Meeting #2

**Design Development**



Meeting #3

**Final Drawings**





# QUESTIONS & ANSWERS



**If you have questions, comments or feedback please contact the Engagement Team.  
It is City Schools' goal for this to be an open and inclusive process.**



**Ivy McNeill**  
**Sr. Community & Public Relations Coordinator**  
[idmcneill01@bcps.k12.md.us](mailto:idmcneill01@bcps.k12.md.us)

**Renee Stainrod**  
**Community & Public Relations Manager**  
[rastainrod@bcps.k12.md.us](mailto:rastainrod@bcps.k12.md.us)

## Sign up to be part of the Design Focus Group!

These meetings will include a deeper look at the design schematics. Attendees will have the opportunity to give direct feedback and ask questions to the architectural engineer and designer.

Sign up:

<https://forms.gle/VuR68b9HBEN4VaDdA>

OR

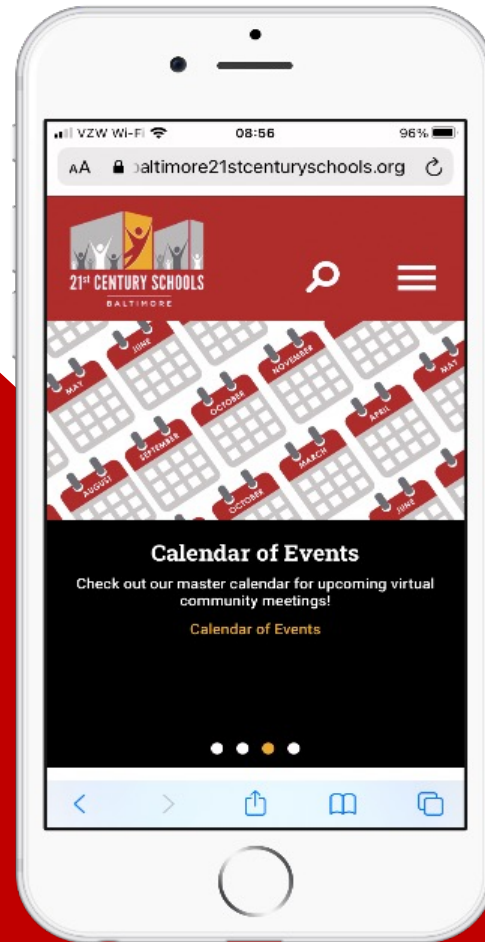


Questions?

Ivy McNeill [idmcneill01@bcps.k12.md.us](mailto:idmcneill01@bcps.k12.md.us)

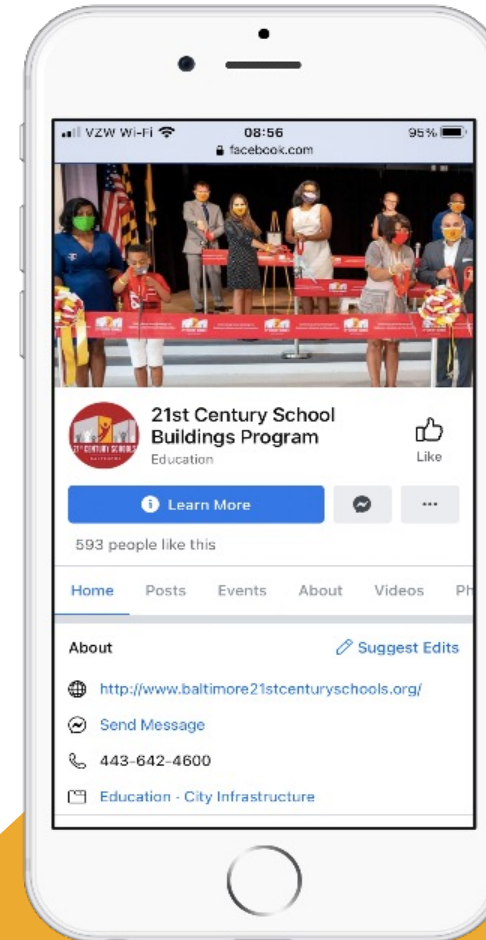


## WEBSITE



**baltimore21stcenturyschools.org**

## SOCIAL MEDIA



**@21stCenturySchoolBuildingsProgram**

[www.baltimore21stcenturyschools.org](http://www.baltimore21stcenturyschools.org)

**Baltimore City Public Schools**

200 East North Avenue Room 407-B

Baltimore MD 21202

(443) 642-4600

**Thank You.**

This presentation was brought to you by  
the Baltimore City Schools Operations  
Department.



**BALTIMORE CITY  
PUBLIC SCHOOLS**

