



**21<sup>st</sup> Century School Buildings Program**  
Cross Country Elementary/Middle School Replacement  
Transportation Meeting  
November 8, 2023

Presenters	Agenda
<p><b>Renee Stainrod</b>            Manager, Community &amp; Public Relations            21<sup>st</sup> Century School Buildings Program</p> <p><b>Ivy McNeill</b>            Sr. Program Coordinator, Community &amp; Engagement            21<sup>st</sup> Century School Buildings Program</p> <p><b>Jacinta Brown Hughes</b>            Director, Transportation Services            City Schools</p> <p><b>Gloria Holt</b>            Assistant Director, Transportation Services            City Schools</p> <p><b>Eric James</b>            Community Liaison            Department of Transportation</p> <p><b>Miriam Carrion/Representative</b>            Spanish Translator            Hispanic Advocate</p>	<ul style="list-style-type: none"> <li>• Introduction</li> <li>• Transportation Update</li> <li>• Questions &amp; Answers</li> </ul>

## Middle School

- Per District policies, middle school students aren't eligible for yellow bus transportation service unless it has been determined transportation is required as a specialized service.
- Cross Country administration and families must prepare for the discontinuation of the current corner-to-corner service for middle school students in January.

## Elementary School

- Elementary school students who live greater than a mile from the school and within the school's zone will return to normal transportation service which is corner to corner.

## Specialized Services

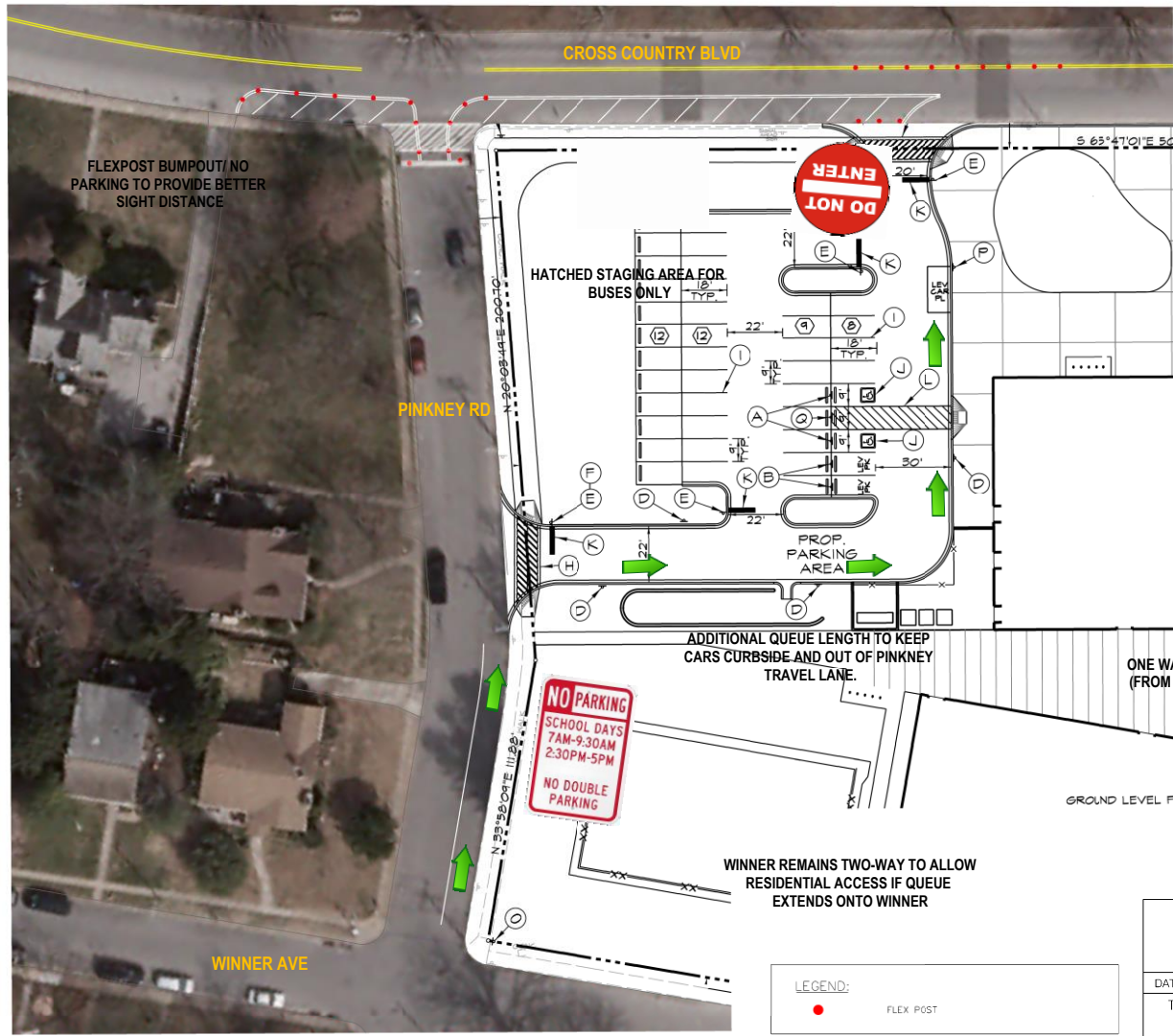
- Students receiving specialized services will continue to receive those services once back in the Cross Country building.

## Bus Stops & Drop Off

- Student bus stops will be assessed and routed by City Schools Transportation Department. More information will be available closer to winter break.
- City Schools Transportation teams will follow up with MTA on the request for bus stop service closer to the Cross Country building.
- Cross Country staff members will continue the current “Kiss and Ride” student drop-off structure for families in January.



B:\T:\Traffic\_Common\_Share\Analysis and Design\_Unit\Design Projects\Cross\_Country\_School\Design\Dgn\PM-0001\_CrossCountry\_Aerial.dgn



REVISIONS		
NO.	DESCRIPTION	DATE BY



**CENTERLINE FLEXPOSTS TO PREVENT LEFT TURNS IN & OUT OF DRIVEWAY**

**FLEXPOSTS TO REINFORCE "RIGHT-OUT ONLY" CONFIGURATION.**

**ANY OPPORTUNITY TO HAVE THIS ENTRANCE REDESIGNED AS "RIGHT-OUT ONLY"?**

**ONE WAY PARKING LOT CIRCULATION (FROM PINKNEY TO CROSS COUNTRY)**

**LEGEND:**

●	FLEX POST
---	-----------

CROSS COUNTRY ELEMENTARY CONCEPT PAVEMENT MARKING AND SIGNAGE PLAN				
DATE: OCT 2022	SCALE: 1" = 20'	DRN:	CKD:	APPVD:
TRAFFIC DIVISION ENGINEERING SECTION	BALTIMORE CITY DEPARTMENT OF TRANSPORTATION	DRAWING NO. PM-01		SHEET 1 OF 1

PLotted Monday, November 07, 2022 AT 02:36 PM  
User: fmoore



# QUESTIONS & ANSWERS

# CONNECT WITH US ONLINE!



@21stcsbaltimore



@21stcsbaltimore



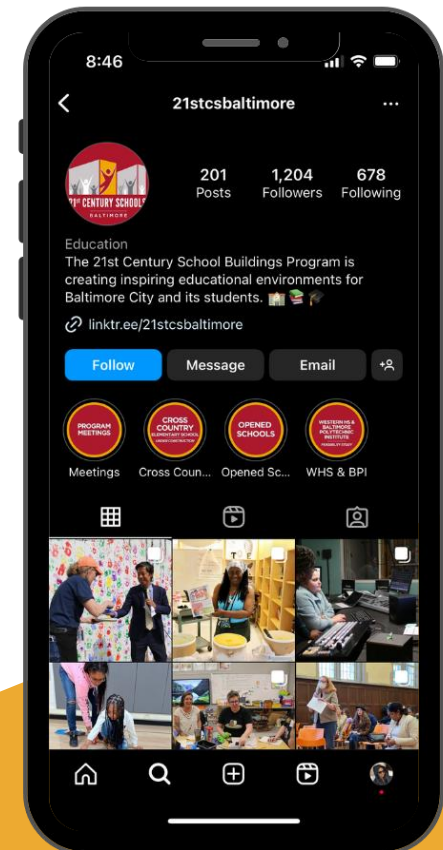
@21stCenturySchoolBuildingProgram



[www.baltimore21stcenturyschools.org](http://www.baltimore21stcenturyschools.org)



[21stCenturyBuildings@bcps.k12.md.us](mailto:21stCenturyBuildings@bcps.k12.md.us)



# Questions?

---

## Program Contacts

**Sr. Community & Public Relations Coordinator**

**Ivy McNeill**

idmcneill01@bcps.k12.md.us

**Community & Public Relations Manager**

**Renee Stainrod**

rastainrod@bcps.k12.md.us

---

## Program Information

**21<sup>st</sup> Century School Buildings Program Office**

**(443) 642-4600**



[www.baltimore21stcenturyschools.org](http://www.baltimore21stcenturyschools.org)

**Baltimore City Public Schools**

200 East North Avenue Room 407-B

Baltimore MD 21202

(443) 642-4600

Thank You.

This presentation was brought to you by the Baltimore City Schools Operations Department.

