



21st Century School Buildings Plan

SCHOOL Frederick Douglass High School and Joseph C. Briscoe Academy
COMMUNITY MEETING Design Development | October 25, 2023

BALTIMORE CITY
PUBLIC SCHOOLS



Introductions

Cyndi Smith

Executive Director
Facilities Planning, Design & Construction
City Schools

Renee Stainrod

Manager, Community & Public Relations
City Schools

Ivy McNeill

Sr. Program Coordinator, Community Engagement
City Schools

Fred Mason

Design Director, Operations
City Schools

Tyler Dumont

21st Century School Buildings Program
Project Manager
Maryland Stadium Authority

F. Thomas Lee, AIA, LEED AP

Amy McCarty, AIA, LEED AP
Samaha Associates

Agenda

Project Overview

Review Proposed Site Plan Layout

Review Proposed Floor Plans

Review Concept Images of Proposed New Entrance to Frederick Douglass

Questions and Comments

Design Workgroup



Co-locate Frederick Douglass High School and Joseph C. Briscoe Academy on the existing Frederick Douglass Campus



Full renovation of the existing Frederick Douglass building to accommodate the Baltimore City Schools 21st Century Educational Specifications



Improve site circulation for cars, buses, and pedestrians and provide safe access for each schools with their own unique identity on the campus



Improve security on site and in the building for staff and students



Improve building systems for better energy performance and occupant comfort



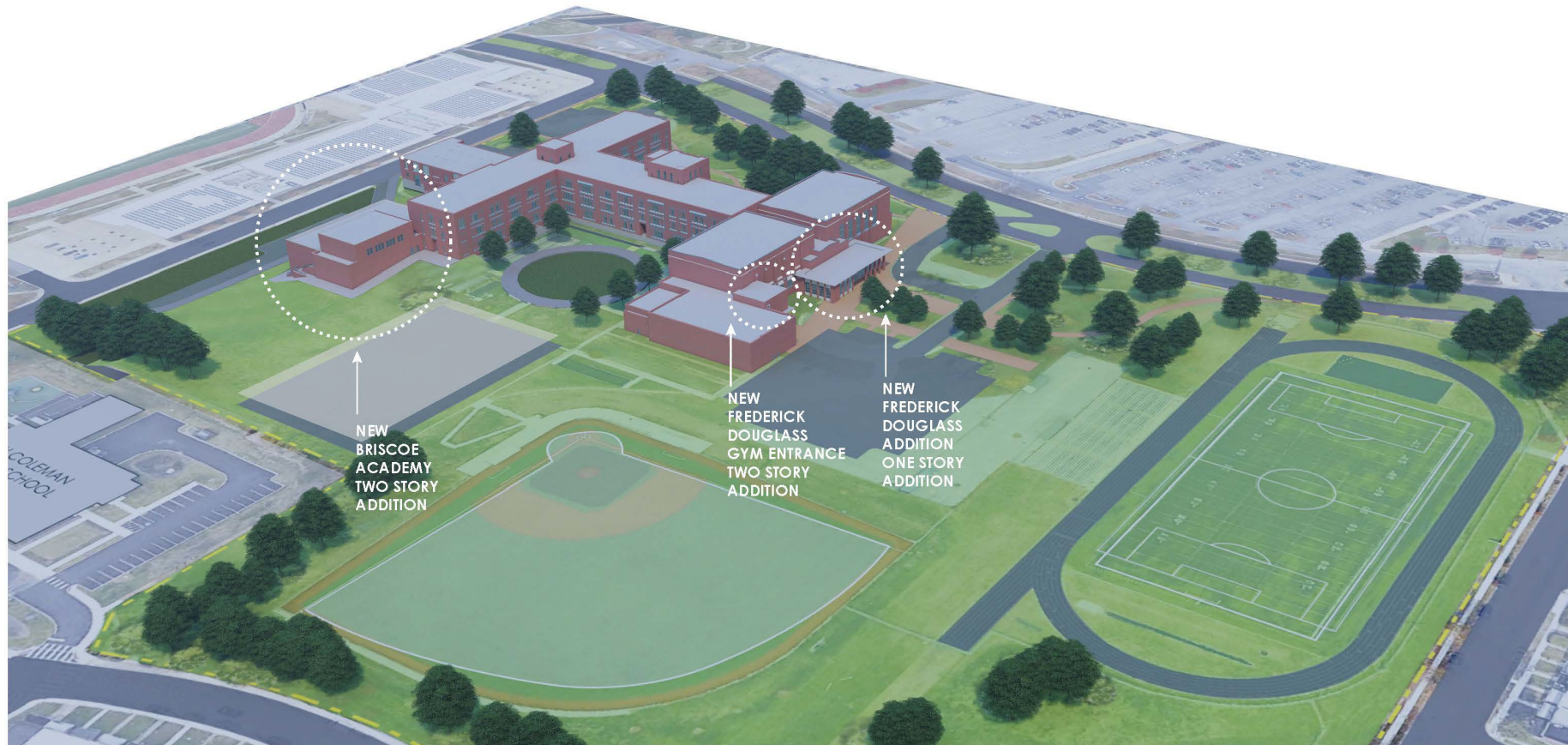
Provide secure entrance vestibule for both schools

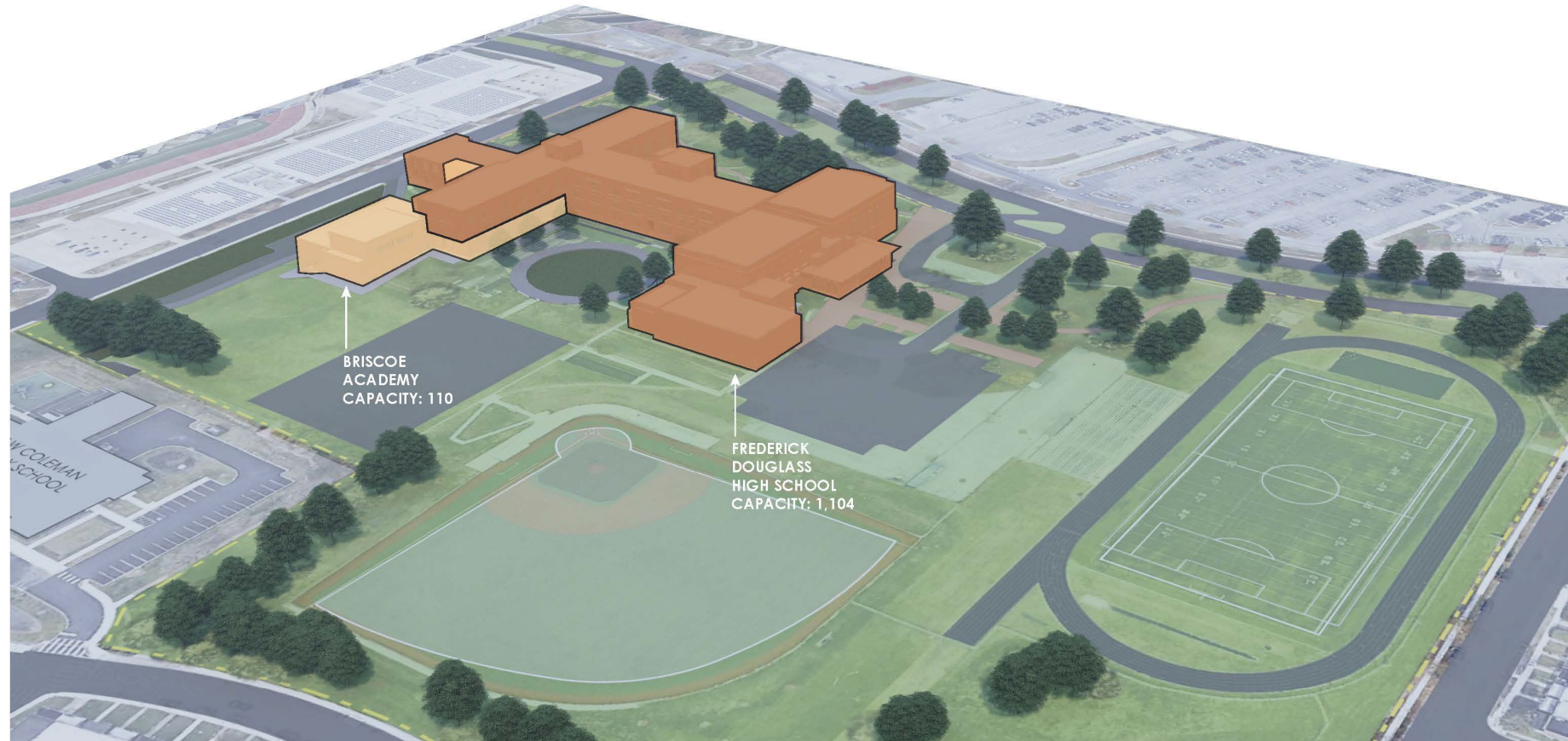


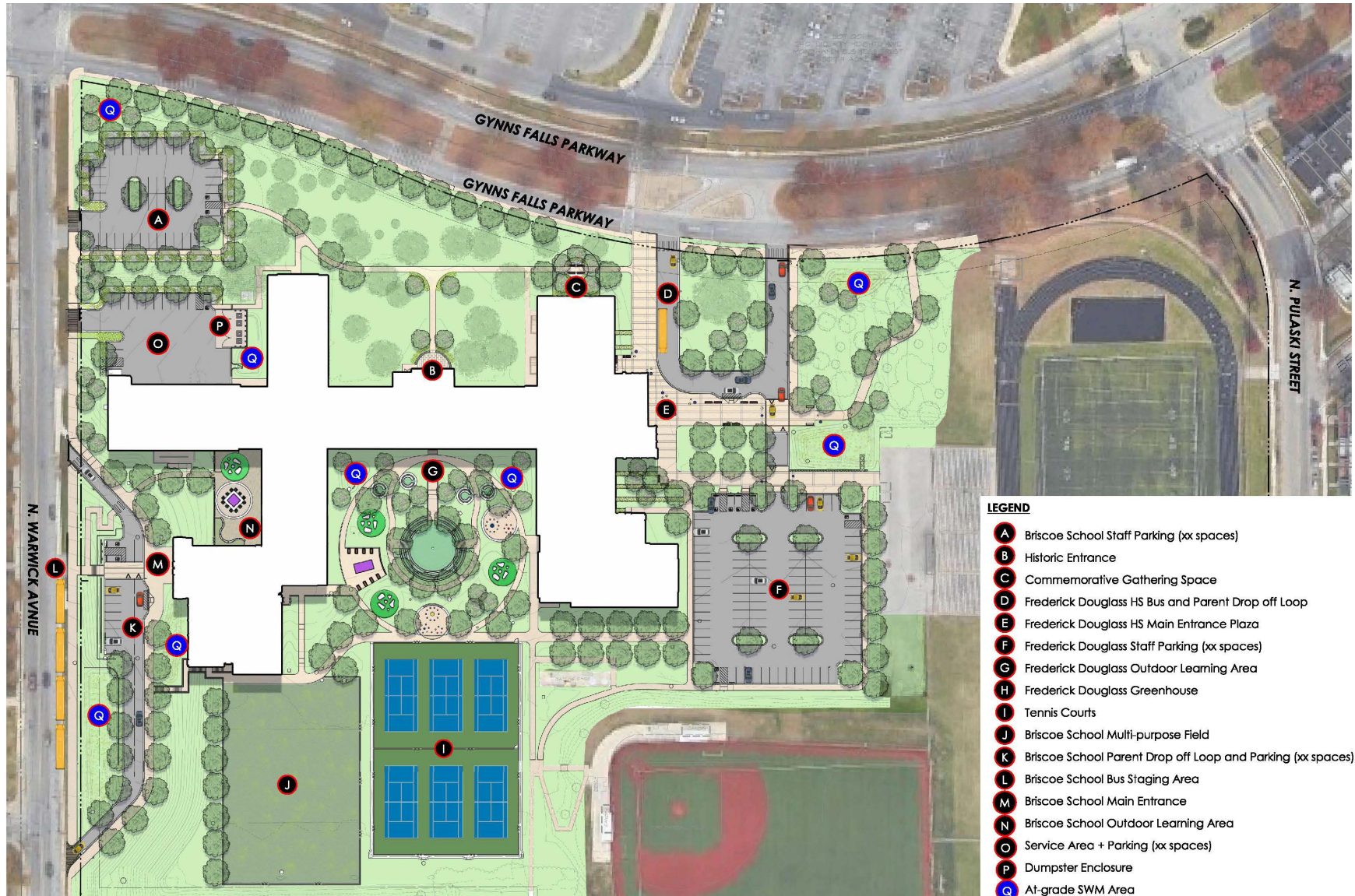
Respect the historic architecture of the existing building

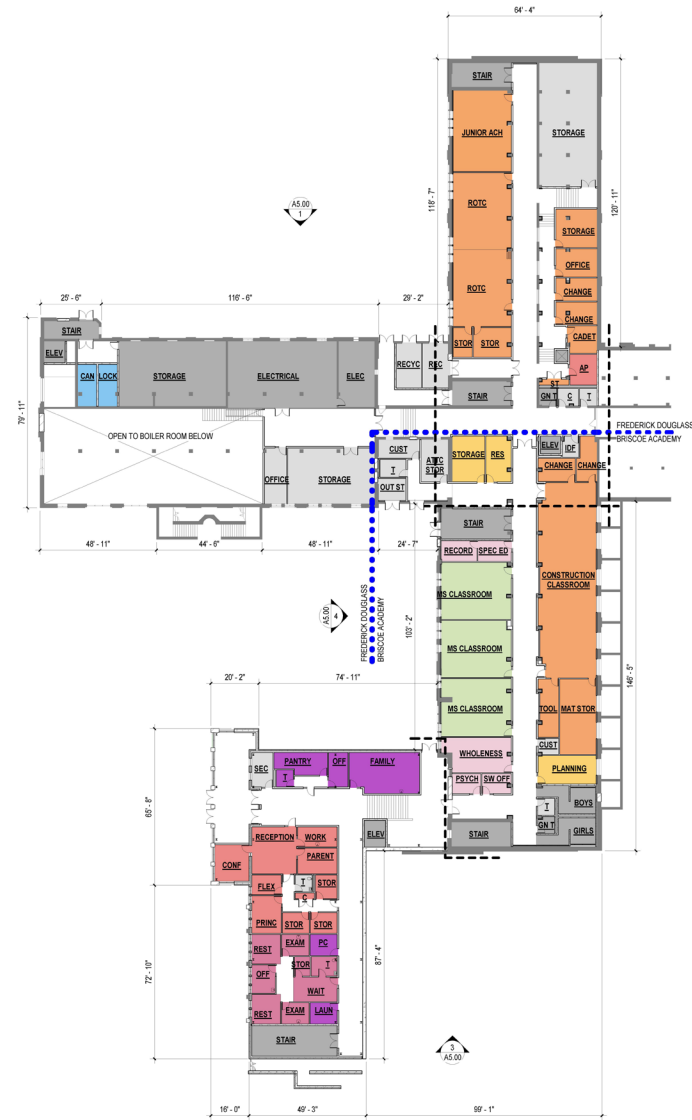
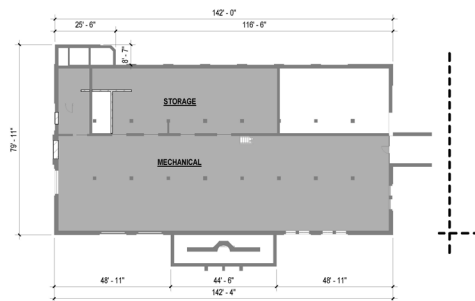
- The building total gross square footage is 249,393
- The total school capacity is 1,214 students:
 - 1,104 Frederick Douglass High School
 - 110 Briscoe Academy
- The existing building will be fully renovated and modernized. There will be three additions; one housing part of the Briscoe Academy, the new Frederick Douglass High School entrance, and the new Frederick Douglass gym entrance.













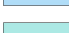




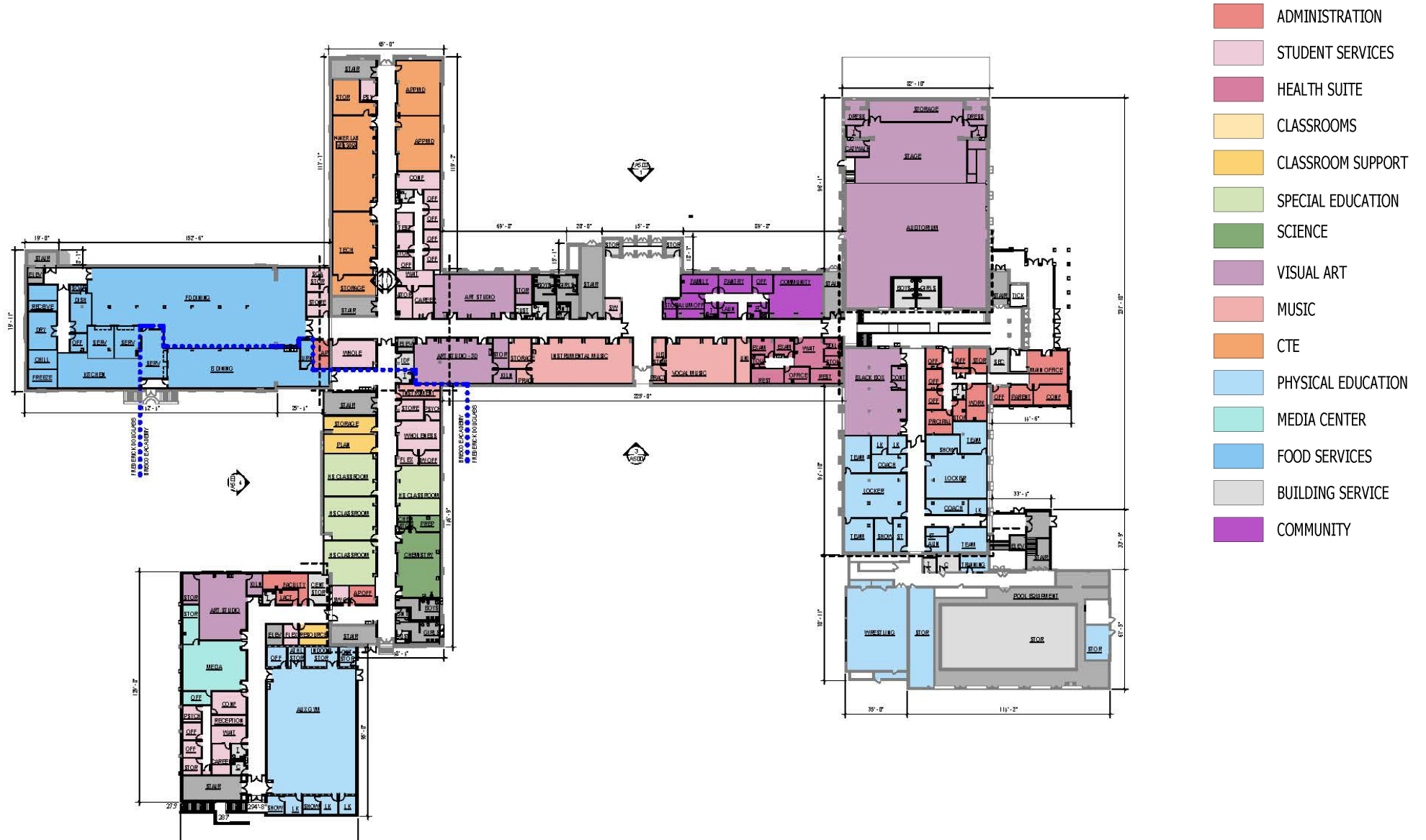








- | | |
|---|--------------------|
|  | ADMINISTRATION |
|  | STUDENT SERVICES |
|  | HEALTH SUITE |
|  | CLASSROOMS |
|  | CLASSROOM SUPPORT |
|  | SPECIAL EDUCATION |
|  | SCIENCE |
|  | VISUAL ART |
|  | MUSIC |
|  | CTE |
|  | PHYSICAL EDUCATION |
|  | MEDIA CENTER |
|  | FOOD SERVICES |
|  | BUILDING SERVICE |
|  | COMMUNITY |

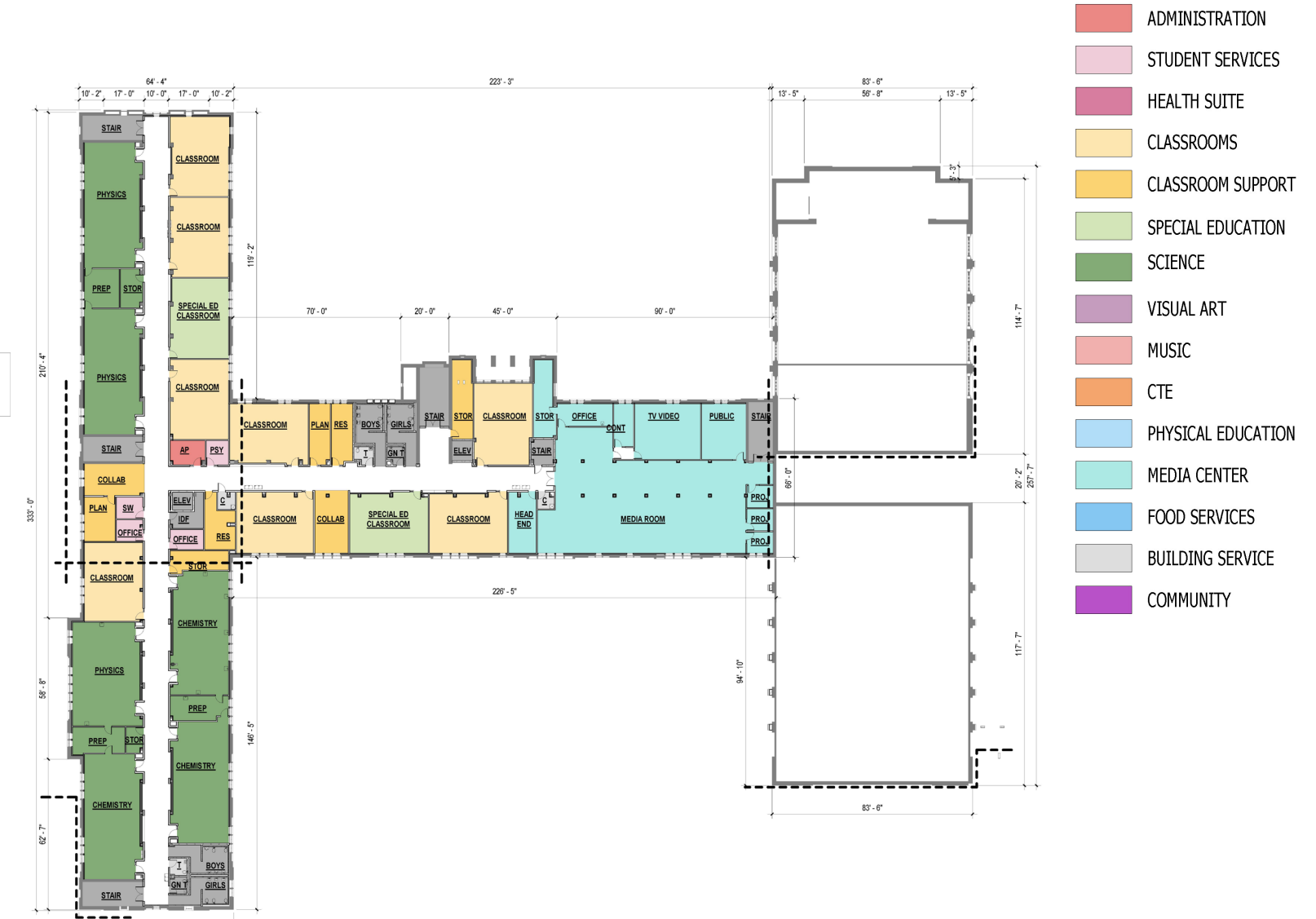


Proposed Second Floor Plan





Proposed Fourth Floor Plan











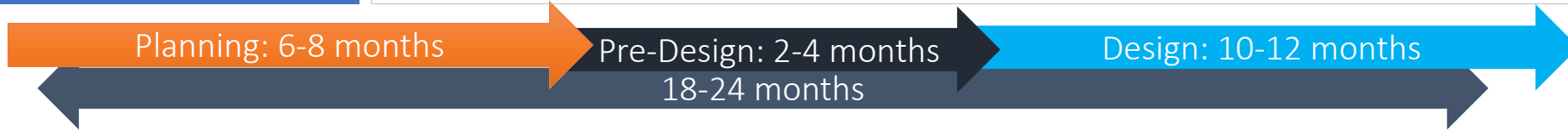












*Dates subject to change

Meeting #1

Schematic



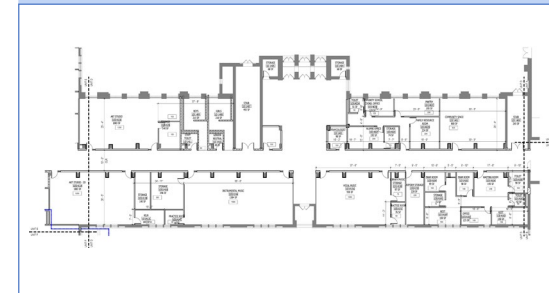
Meeting #2

Design Development



Meeting #3

Final Drawings





QUESTIONS & ANSWERS

**If you have questions, comments or feedback please contact the Engagement Team.
It is City Schools' goal for this to be an open and inclusive process.**



Ivy McNeill

Sr. Community & Public Relations Coordinator
idmcneill01@bcps.k12.md.us

Renee Stainrod

Community & Public Relations Manager
rastainrod@bcps.k12.md.us

Sign up to be part of the Design Focus Group!

These meetings will include a deeper look at the design schematics. Attendees will have the opportunity to give direct feedback and ask questions to the architectural engineer and designer.

Sign up:

<https://forms.gle/VuR68b9HBEN4VaDdA>

OR

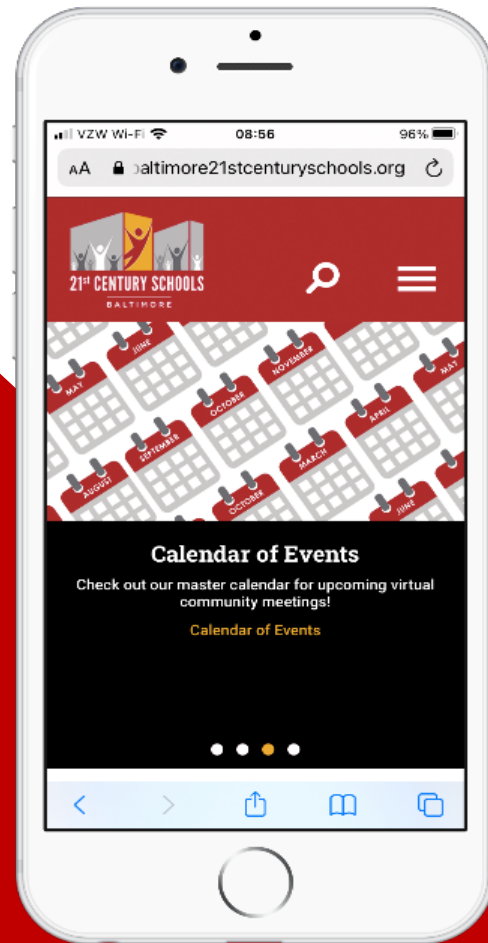


Questions?

Ivy McNeill idmceill01@bcps.k12.md.us

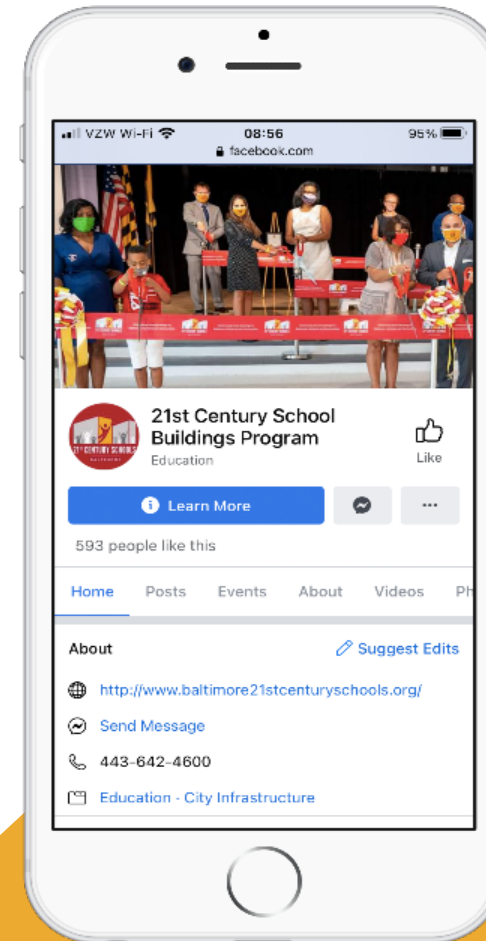


WEBSITE



baltimore21stcenturyschools.org

SOCIAL MEDIA



[@21stCenturySchoolBuildingsProgram](https://www.facebook.com/21stCenturySchoolBuildingsProgram)

www.baltimore21stcenturyschools.org

Baltimore City Public Schools

200 East North Avenue Room 407-B

Baltimore MD 21202

(443) 642-4600

Thank You.

This presentation was brought to you by
the Baltimore City Schools Operations
Department.



**BALTIMORE CITY
PUBLIC SCHOOLS**

