



21st Century School Buildings Program

Commodore John Rodgers Elementary/Middle School
COMMUNITY MEETING NO. 2 – SCHEMATIC DESIGN PRESENTATION
March 09, 2023

Presenters	Agenda
<p>Renee Stainrod Public Relations/Engagement Manager 21st Century School Buildings Program</p> <p>Ivy McNeill Engagement Program Coordinator 21st Century School Buildings Program</p> <p>Michael McBride Design Director 21st Century School Buildings Program</p> <p>Rick LeBlanc Architect Crabtree Rohrbaugh & Associates</p>	<ul style="list-style-type: none"> • Introductions • 21st Century Overview & Planning the CJR Project • Project Scope • Design • Schematic Site Plan • Schematic Floor Plans • Project Timeline

A **Feasibility Study** is an analysis of the existing condition of the site and building components including systems, structure, capacity, and other planning and design considerations.

The study produced four possible solutions; (1) Strategic Renovation and Additions, (2) Major Renovations and Additions, (3) Major Renovation & Partial School Replacement, and (4) Replacement School. Each option addressed:

- **Educational Specifications:** Increased capacity to 1029 students.
- **Current Site Limitations:** Inadequate site play areas, service access, parking, and accessibility.
- **Option #4**, the Replacement Option, was selected as the recommendation because it allows for the most effective and comprehensive redevelopment of the site and improved parking, student drop-off, and play areas.



Existing Site Challenges

- Building organization and parking are not aligned on-site – parking is at the rear
- Play areas are separated on-site
- Building service is through the adjacent property
- No parent drop-off area
- No bus drop-off zone

Existing Building Challenges

- Building is undersized for enrollment
- Significant reconfiguration of interior space to meet Ed. Spec. requirements
- Mechanical and electrical systems have major deficiencies





Replacement for Commodore John Rodgers Pre-K/8 Elementary/Middle School

- 1,029 design capacity
- Consolidate main entrance and parking with separate bus and vehicular access
- Create secure and contained play areas for Pre-K, K, Head Start, and Grades 1-8
- Strong connection to community
- Promote safety and security through design
- Locate Pre-K and Kindergarten on main entrance floor level for primary student access
- Daylight and views for all classroom and learning spaces
- Sustainable design – LEED Silver Certification



Replacement for Commodore John Rodgers Pre-K/8 Elementary/Middle School

- Community space location to improve community access and enhance safety and security
- Holistic approach to design
- Engage people and places to create learning opportunities
- Integrate interiors and furniture to enhance educational spaces
- Interior finishes that reflect schools' values & traditions
- Create dynamic learning environments through use of color and patterns
- Durable, cost-effective materials to enhance life cycle costs

Separate public & community spaces from academic wing

Pre-K and K classrooms located on the main entrance floor with direct access to their play area

Improved vertical/horizontal building circulation

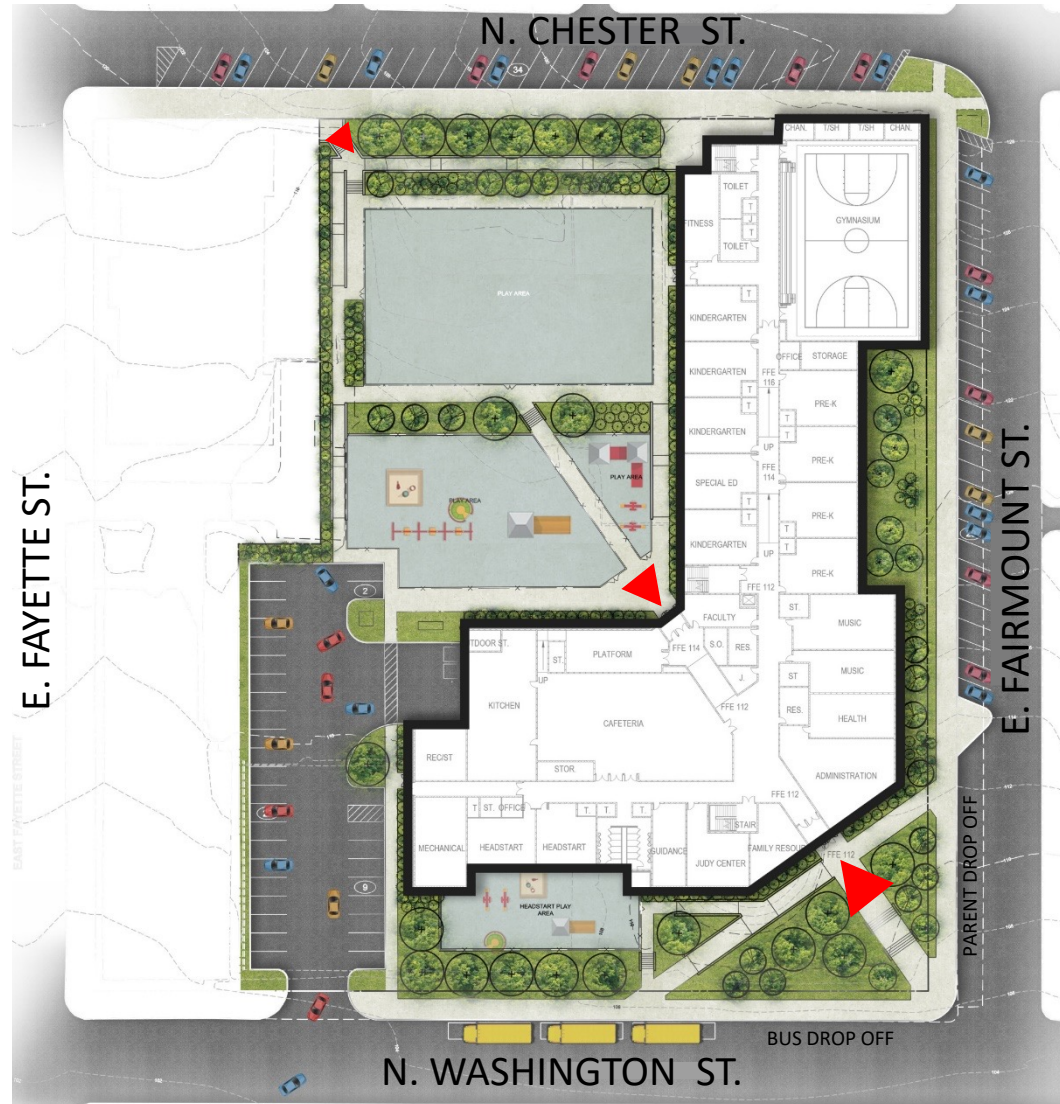
Grade groupings are separated by floor levels

Cluster Pre-K and Kindergarten classrooms

Create separate play areas dedicated by grade groupings

Provide daylighting into all learning spaces

Security is enhanced with the ability to secure the academic wings during community use



Site Features

- Main entrance on N. Washington Ave. – provides bus and vehicular access at main entrance location
- Secure play area from northeast neighborhood at N. Chester Street

Safety & Security

- Defined main entrance at bus and parent drop-off
- Three separate and secured play areas
- Dedicated staff, visitor, and community parking totaling 33 spaces

Site Opportunities

- Re-oriented building and site to optimize use of available space

Pedestrian Circulation & Community Connectivity

- Main Entrance and parking provide access to all community support spaces.





TARGET GSF: 112,490 SF

- Pre-K-1 Grades
- Music Classrooms
- Gym/Fitness and Support Spaces
- Cafetorium/Platform
- Faculty Room
- Administration
- Guidance
- Health Suite
- Family Resource Room
- Judy Center
- Head Start Classrooms/
Outdoor Play





- Grades 1-4
- Special Education Classroom
- Speech
- Art Classrooms
- Media Center/Video Room

TARGET GSF: 112,490 SF



- Grades 5-8
- Special Education Classrooms
- Science Classrooms
- Technology Education
- Resource Rooms
- Faculty Planning

TARGET GSF: 112,490 SF



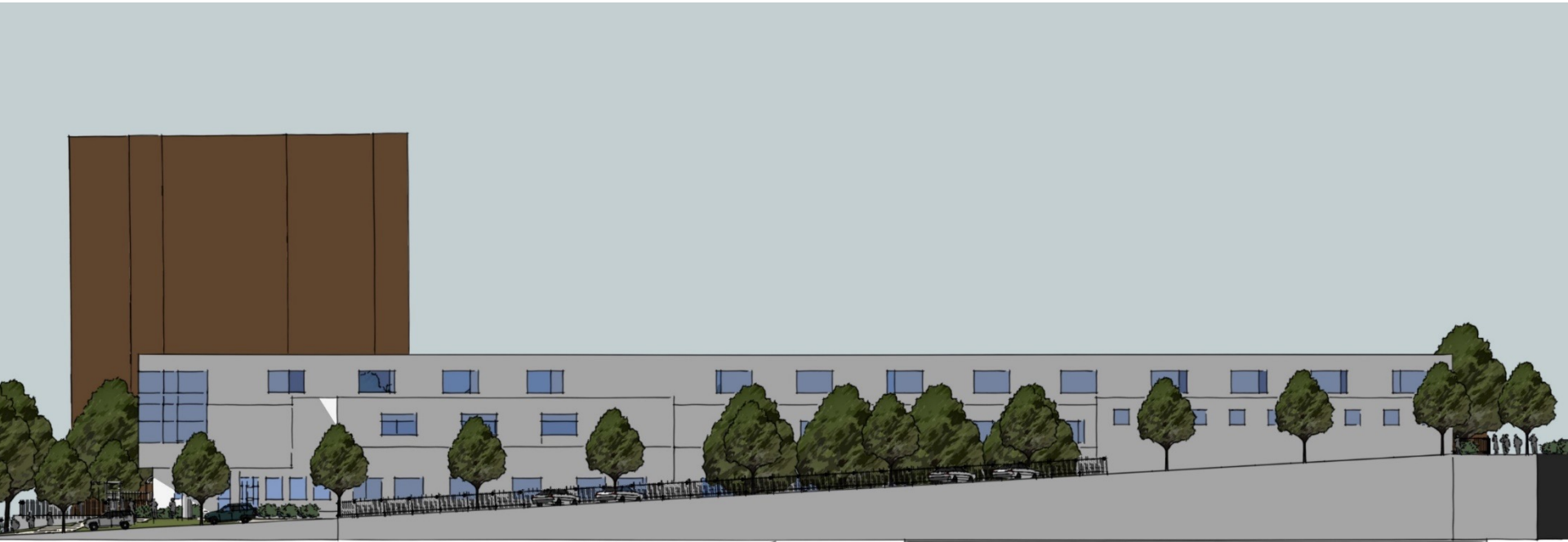


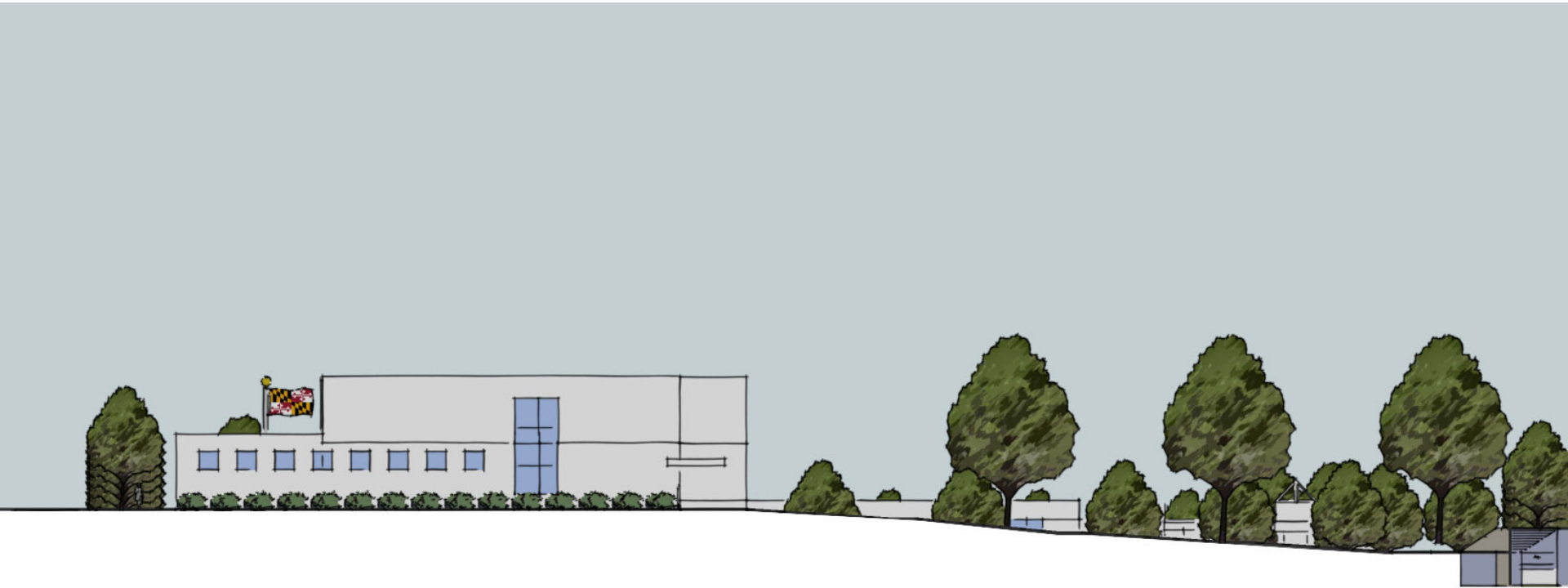


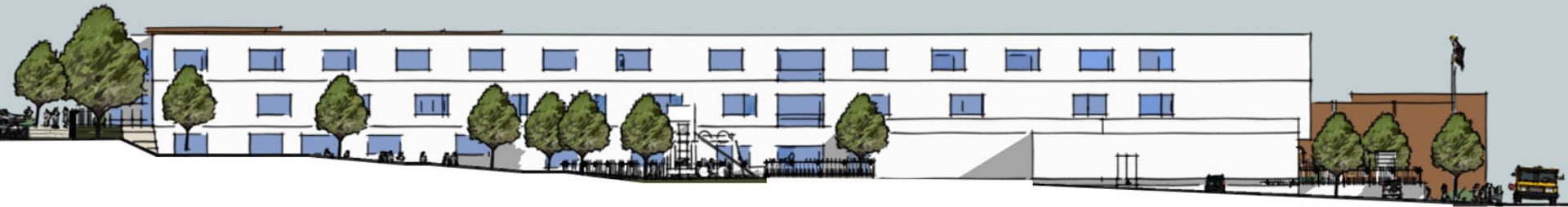










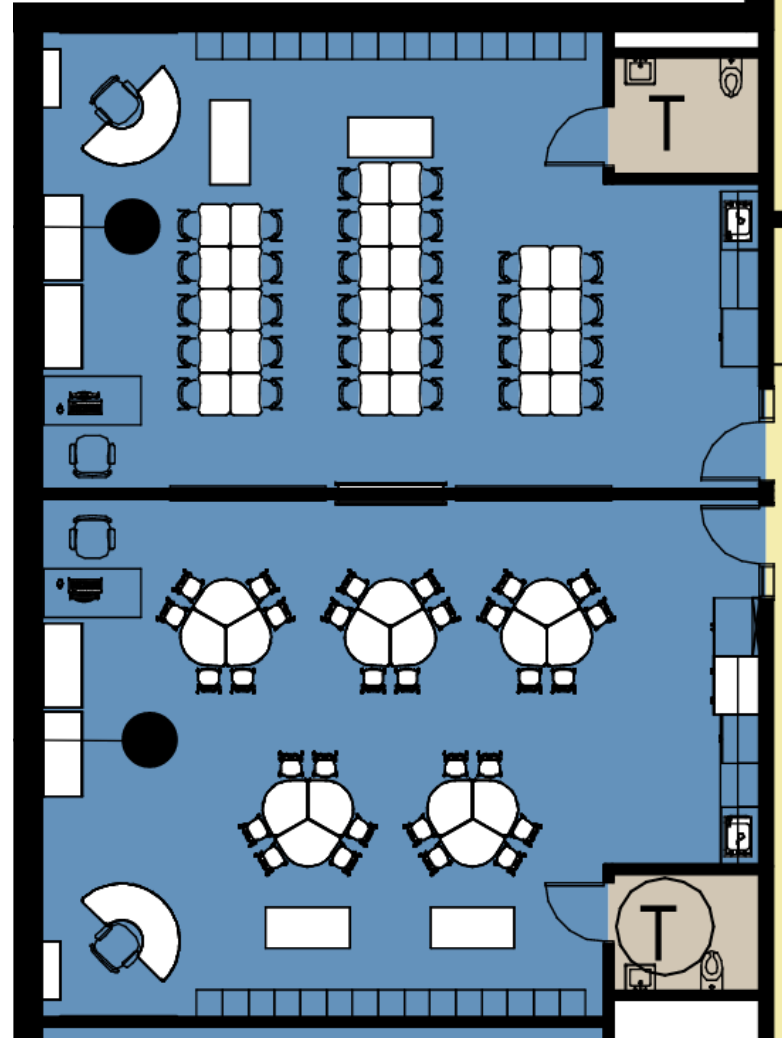




BAY BROOK ES/MS CLASSROOM



MONTEBELLO ES/MS CLASSROOM

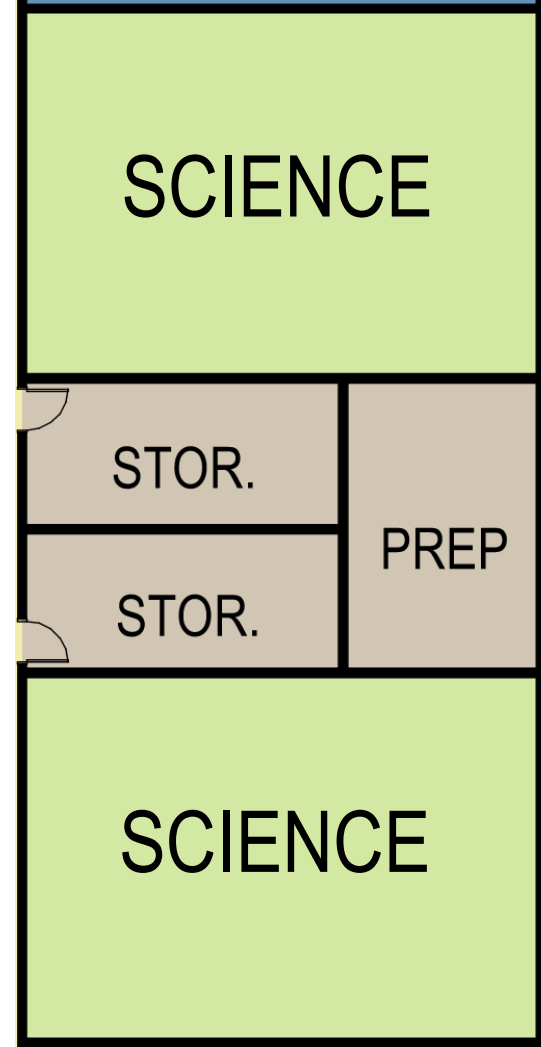




BAY BROOK ES/MS SCIENCE CLASSROOM



BAY BROOK ES/MS SCIENCE CLASSROOM

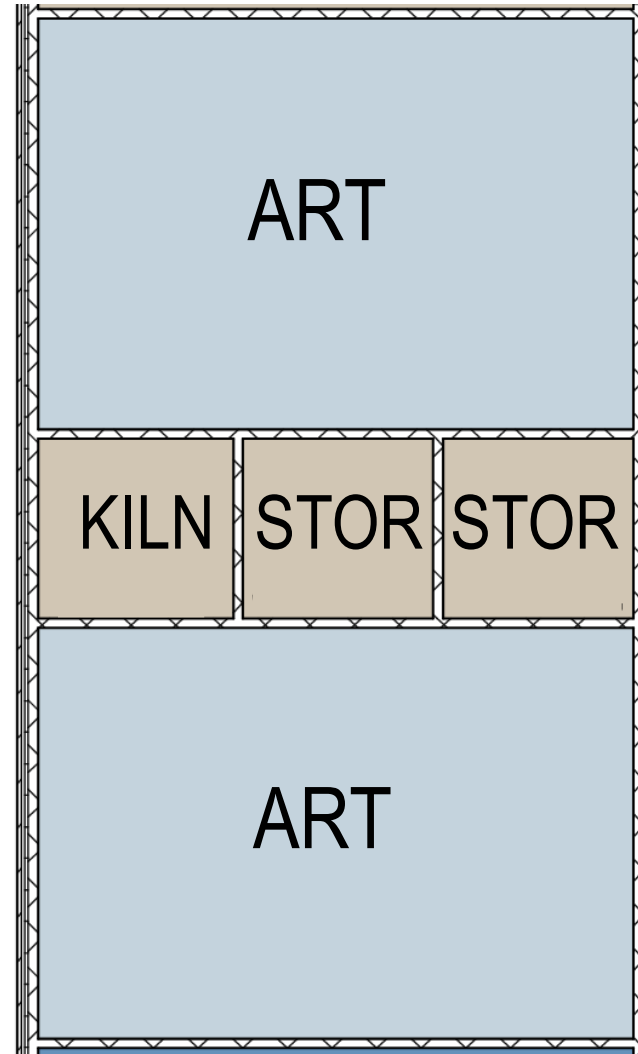




BAY BROOK ES/MS ART CLASSROOM



BAY BROOK ES/MS ART CLASSROOM

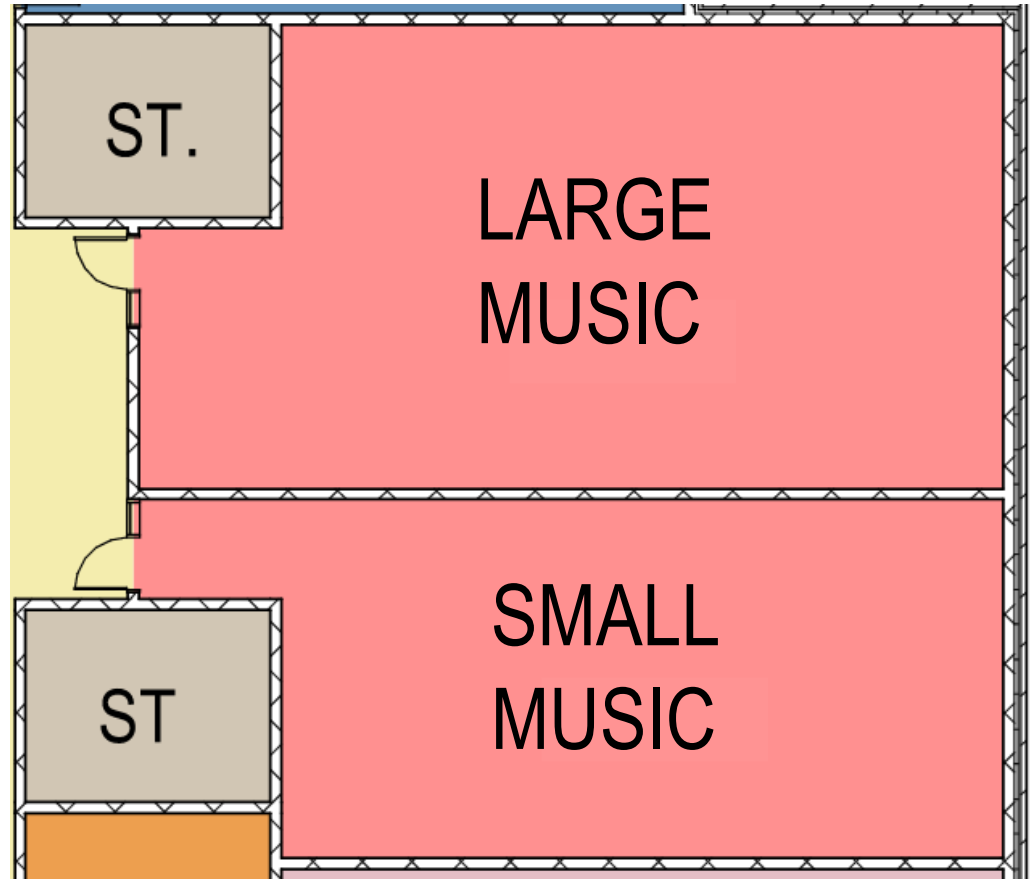




BARESVILLE ES MUSIC CLASSROOM



BAY BROOK ES/MS MUSIC CLASSROOM

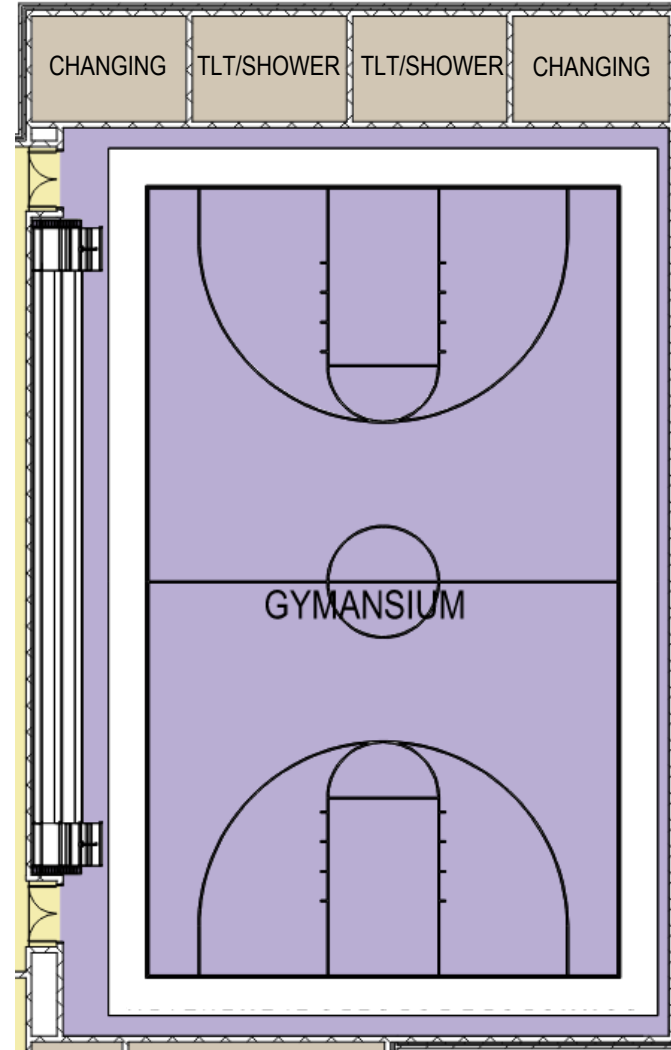




WALTER P CARTER ES/MS GYMNASIUM



FORT WASHINGTON ES GYMNASIUM



Schematic Design:	Winter 2022/Spring 2023*
Design Development:	Spring 2023*
Construction Documents:	Summer 2023*
Bidding:	Fall 2023*
Begin Construction:	Fall 2023*
Substantial Completion:	Summer 2025*

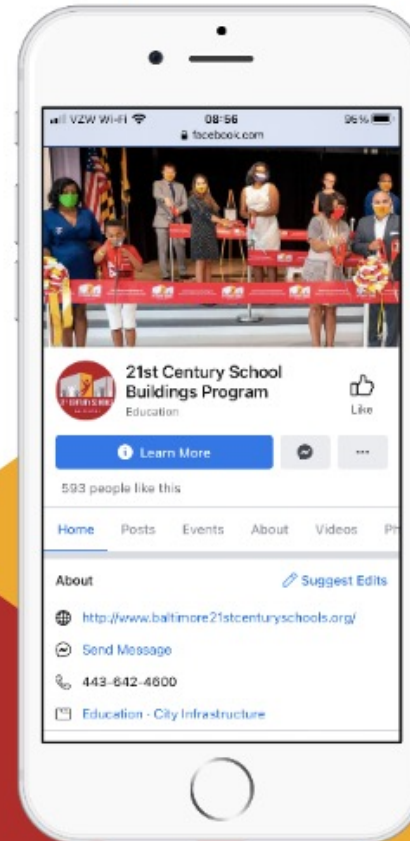
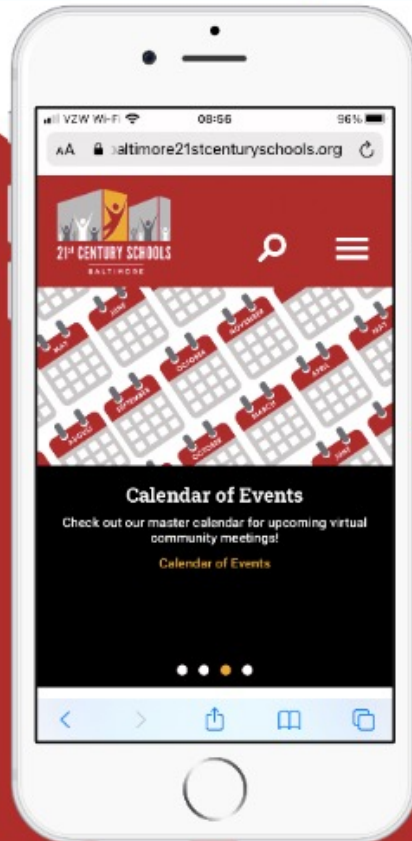
** Dates listed are based on a projected schedule and are subject to change.*



21st Century School Buildings Program Engagement and Transition Process Map



www.baltimore21stcenturyschools.org @21stCenturySchoolBuildingProgram



Questions?

Program Contacts

Sr. Community & Public Relations Coordinator

Ivy McNeill

idmcneill01@bcps.k12.md.us

Community & Public Relations Manager

Renee Stainrod

rastainrod@bcps.k12.md.us

Program Information

21st Century School Buildings Program Office

(443) 642-4600

www.baltimore21stcenturyschools.org

Baltimore City Public Schools

200 East North Avenue Room 407-B

Baltimore MD 21202

(443) 642-4600

Thank You.

This presentation was brought to
you by the Baltimore City
Schools Operations Department.



**BALTIMORE CITY
PUBLIC SCHOOLS**

