



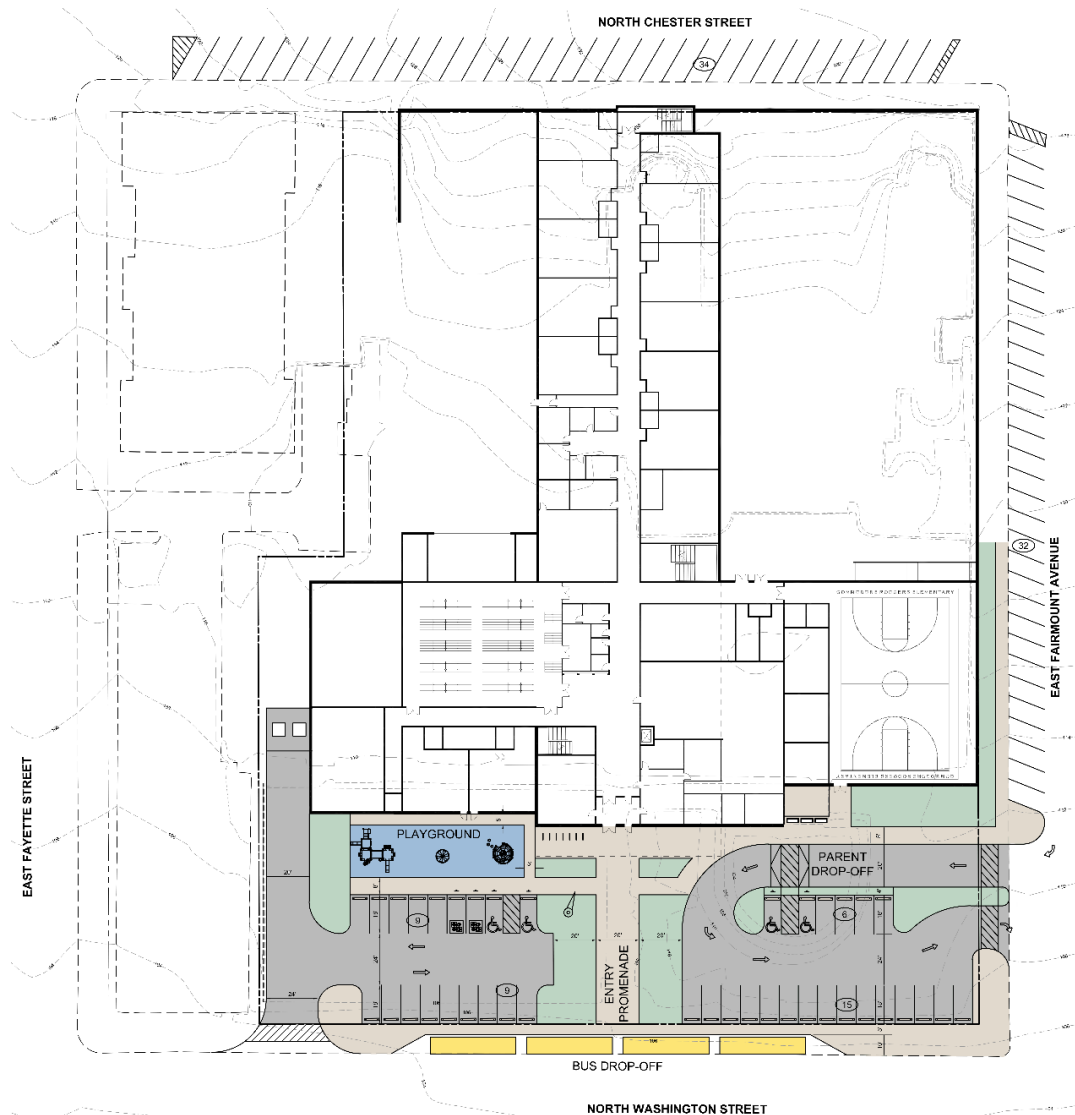
# 21<sup>st</sup> Century School Buildings Program

Commodore John Rodgers Elementary/Middle School

DESIGN WORKGROUP PRESENTATION

December 07, 2023

Presenters	Agenda
<p><b>Renee Stainrod</b> Public Relations/Engagement Manager 21<sup>st</sup> Century School Buildings Program</p> <p><b>Ivy McNeill</b> Sr. Engagement Program Coordinator 21<sup>st</sup> Century School Buildings Program</p> <p><b>Fred Mason</b> Design Director 21<sup>st</sup> Century School Buildings Program</p> <p><b>Charlie Ravenna</b> Project Manager Maryland Stadium Authority</p>	<ul style="list-style-type: none"><li>• Introductions</li><li>• Design</li><li>• Site Plan</li><li>• Floor Plans</li><li>• Science Classroom</li><li>• Art Room</li><li>• Music Room</li><li>• Gym</li><li>• General Classroom</li><li>• Renderings</li></ul>



### Site Features

- Main Entrance on N Washington Avenue – provides vehicular access and parking at main entrance
- Secure play along E Fairmount and N Chester St.

### Safety & Security

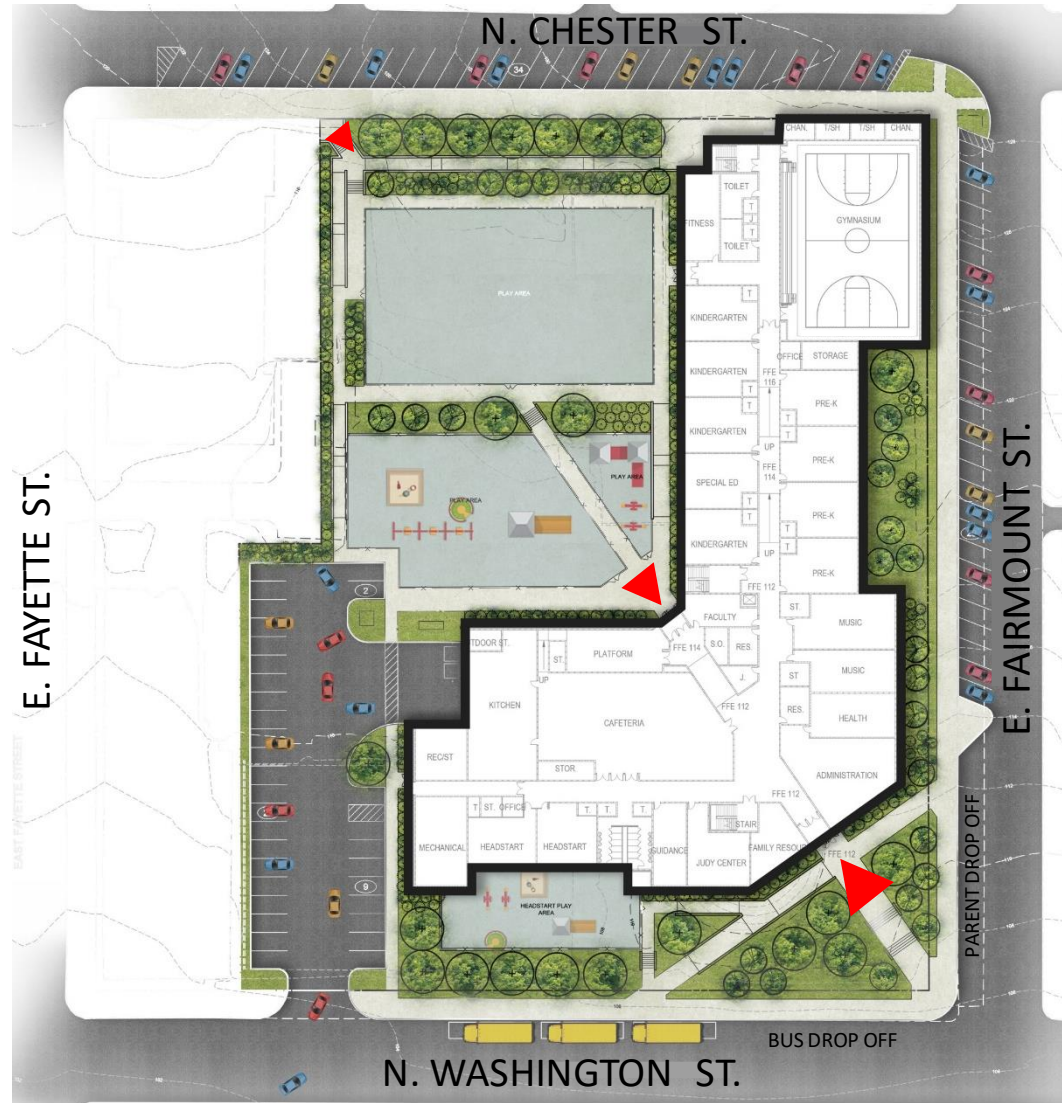
- Defined main entrance at bus and parent drop-off
- Secured K-Play and Head Start
- Dedicated staff, visitor, and community parking

### Site Challenges

- Topography – re-oriented site to work with topography and provide secure play.

### Pedestrian Circulation & Community Connectivity

- Main Entrance and parking provide access to all community support spaces



### Site Features

- Main entrance on N. Washington Ave. – provides bus and vehicular access at main entrance location
- Secure play area from northeast neighborhood at N. Chester Street

### Safety & Security

- Defined main entrance at bus and parent drop-off
- Three separate and secured play areas
- Dedicated staff, visitor, and community parking totaling 33 spaces

### Site Opportunities

- Re-oriented building and site to optimize use of available space

### Pedestrian Circulation & Community Connectivity

- Main Entrance and parking provide access to all community support spaces.





## FIRST FLOOR PLAN

- PK-1 Grades
- Music Classrooms
- Gym / Fitness & Support Spaces
- Cafetorium / Stage
- Judy Center
- Administration
- Guidance
- Nurse
- Family Resource Room
- Head Start Classrooms / Outdoor Play

Commodore John Rodgers EMS  
Community Meeting No 1.  
Schematic Design Presentation  
December 14, 2022



**Site Features**

- Main entrance on N. Washington Ave. – provides bus and vehicular access at main entrance location
- Secure play area from northeast neighborhood at N. Chester Street

**Safety & Security**

- Defined main entrance at bus and parent drop-off
- Three separate and secured play areas
- Dedicated staff, visitor, and community parking totaling 33 spaces

**Site Opportunities**

- Re-oriented building and site to optimize use of available space

**Pedestrian Circulation & Community Connectivity**

- Main entrance and parking provide access to all community support spaces.

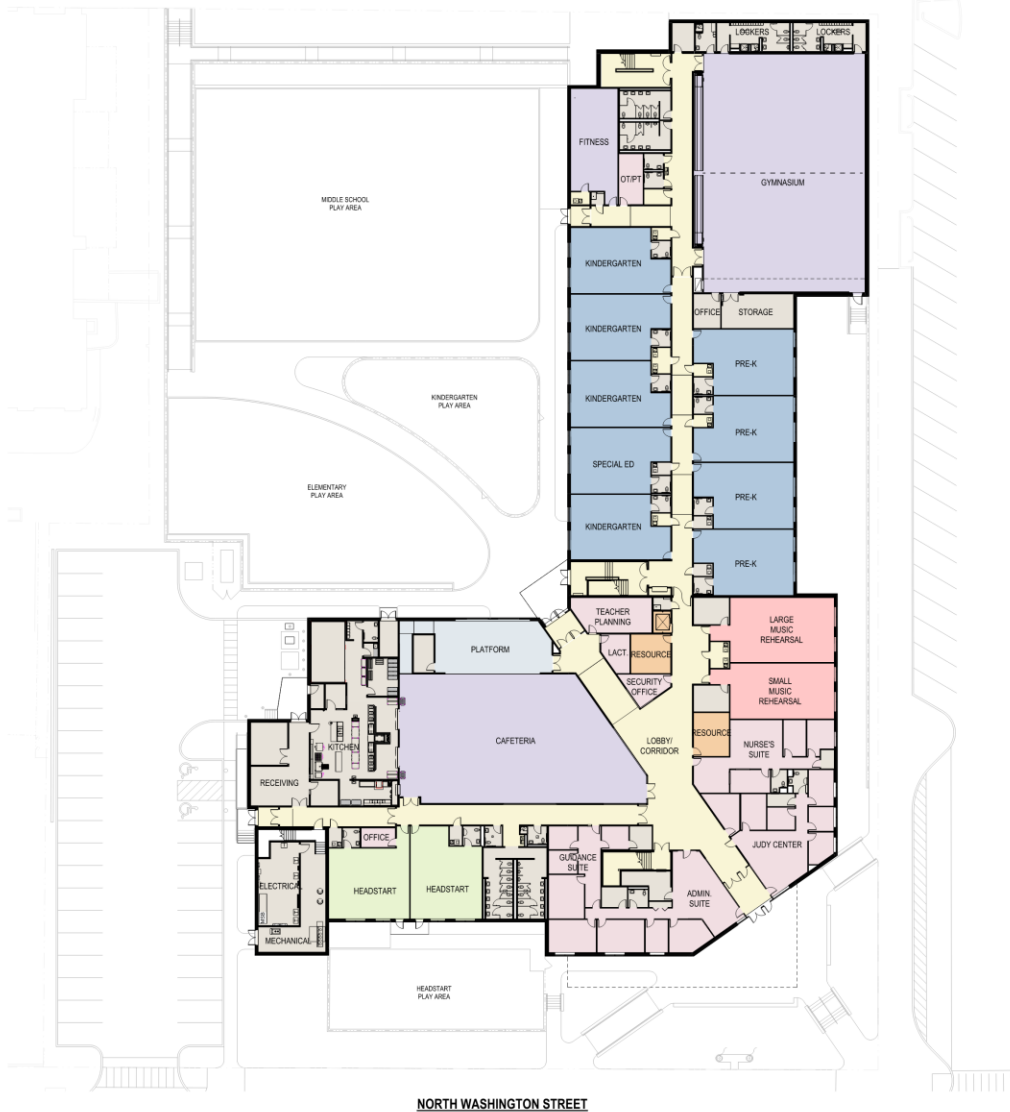




TARGET GSF: 112,490 SF

- Pre-K-1 Grades
- Music Classrooms
- Gym/Fitness and Support Spaces
- Cafetorium/Platform
- Faculty Room
- Administration
- Guidance
- Health Suite
- Family Resource Room
- Judy Center
- Head Start Classrooms/  
Outdoor Play

First Floor Plan



- Pre-K-K grades
- Special education classroom
- Music classrooms
- Gym/Fitness and support spaces
- Cafetorium/platform
- Faculty room
- Administration
- Guidance
- Health suite
- Family resource room
- Judy Center
- Head start classrooms/outdoor play

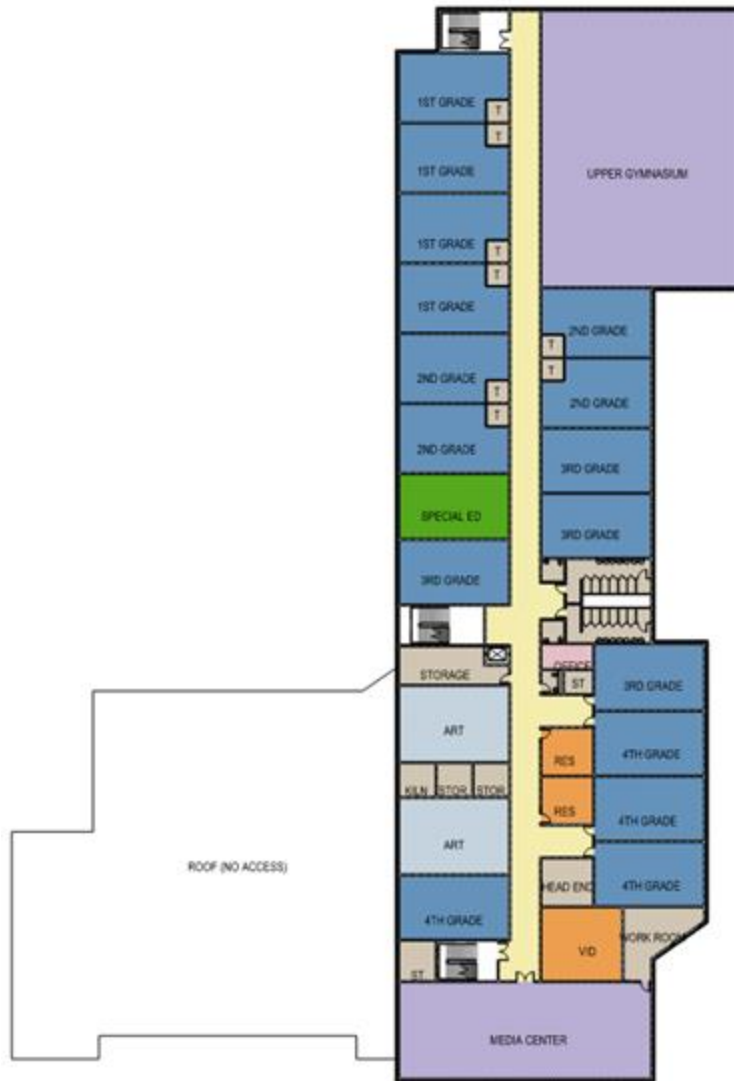
First Floor GSF: 53,370 SF  
 Overall SF: 117,955 SF







- Grades 1-4
- Special Education Classroom
- Speech
- Art Classrooms
- Media Center / Video Room
- Faculty Planning Room



- Grades 1-4
- Special Education Classroom
- Speech
- Art Classrooms
- Media Center/Video Room

TARGET GSF: 112,490 SF



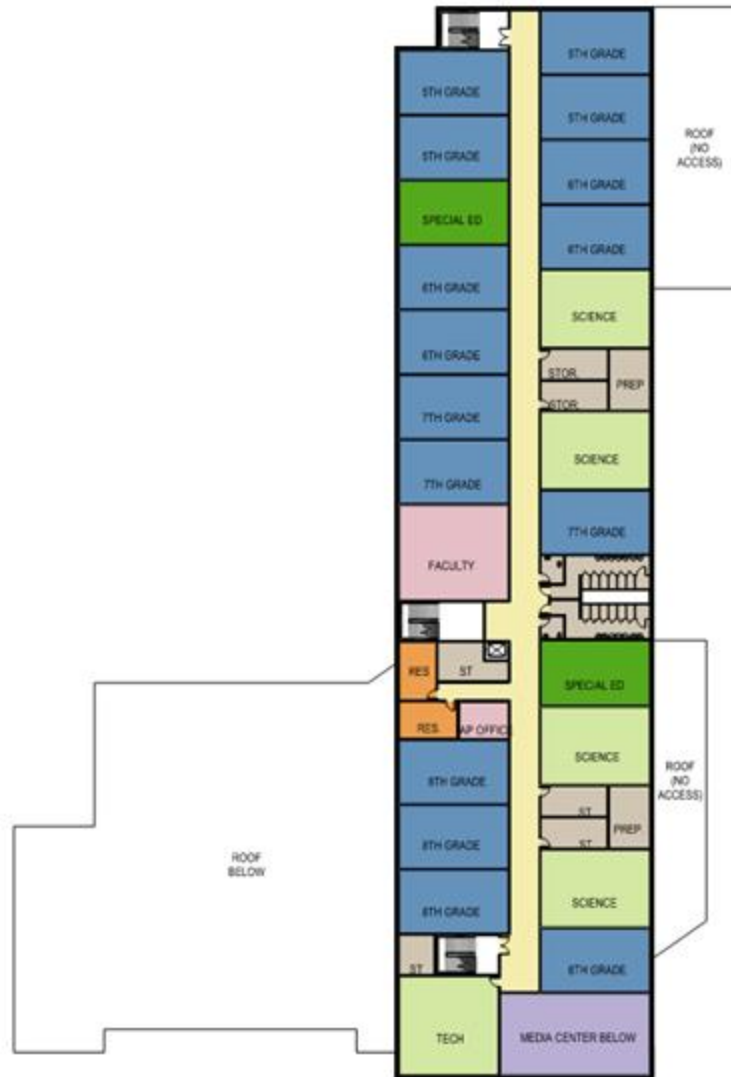
- Grades 1-4
- Special education classroom
- Speech
- Art classrooms
- Media center/video room

Second Floor GSF: 32,984 SF  
 Overall SF: 117,955 SF





- Grades 5-8
- Special Education Classrooms
- Science Classrooms
- Technology Education
- Resource Rooms
- Faculty Planning



- Grades 5-8
- Special Education Classrooms
- Science Classrooms
- Technology Education
- Resource Rooms
- Faculty Planning

TARGET GSF: 112,490 SF





- Grades 5-8
- Special education classrooms
- Science classrooms
- Technology education
- Resource rooms
- Faculty planning

Third Floor GSF: 32,765 SF  
 Overall SF: 117,955 SF

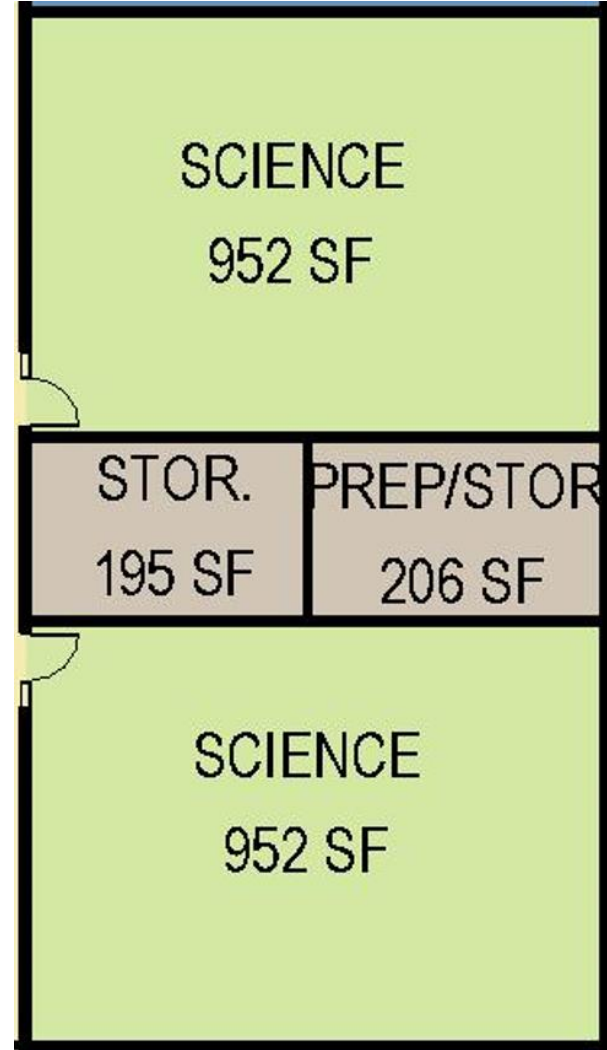




BAY BROOK ES/MS SCIENCE CLASSROOM



BAY BROOK ES/MS SCIENCE CLASSROOM

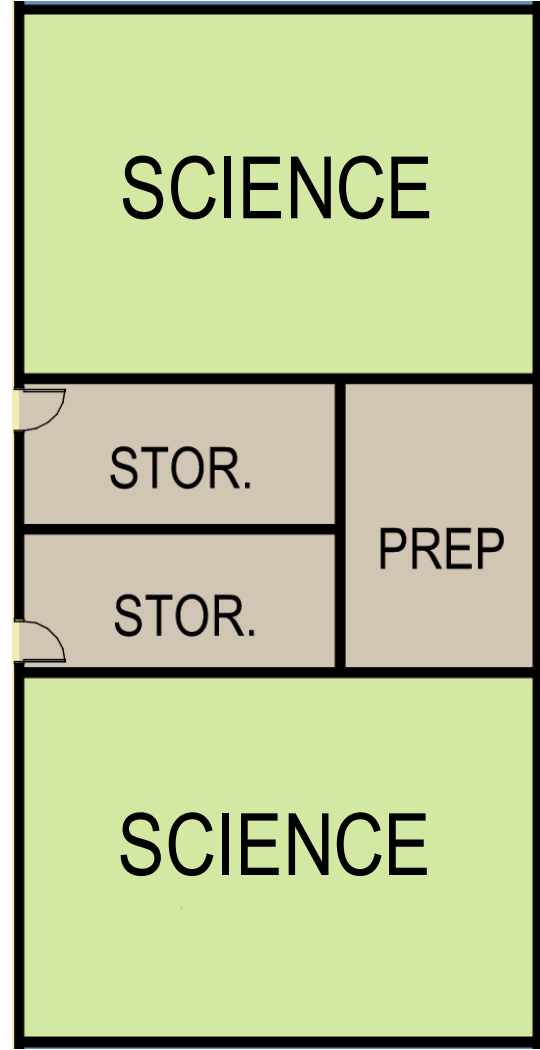




BAY BROOK ES/MS SCIENCE CLASSROOM



BAY BROOK ES/MS SCIENCE CLASSROOM



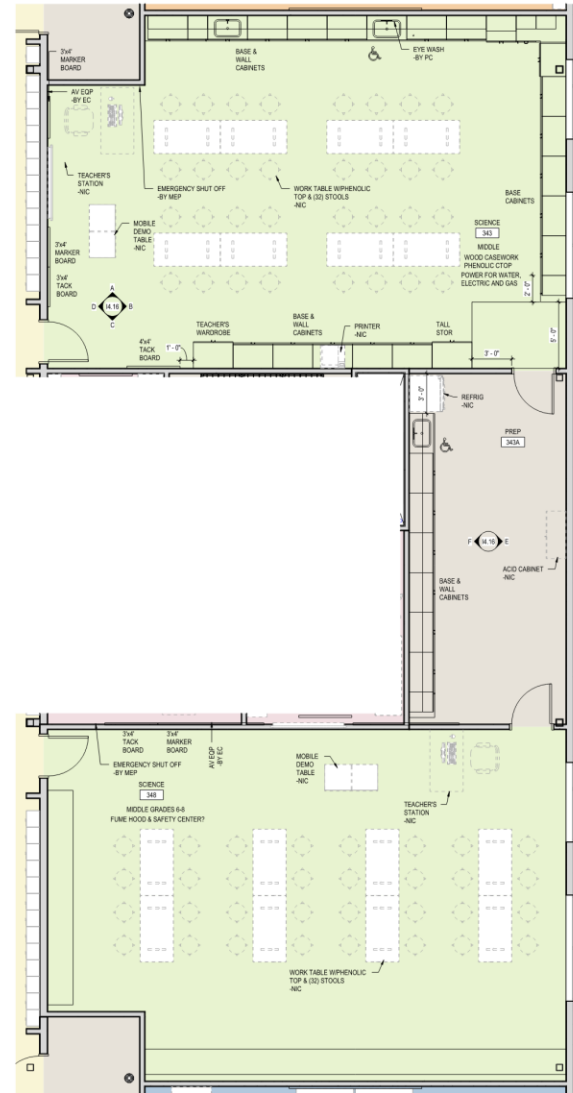




BAY BROOK ES/MS SCIENCE CLASSROOM



BAY BROOK ES/MS SCIENCE CLASSROOM

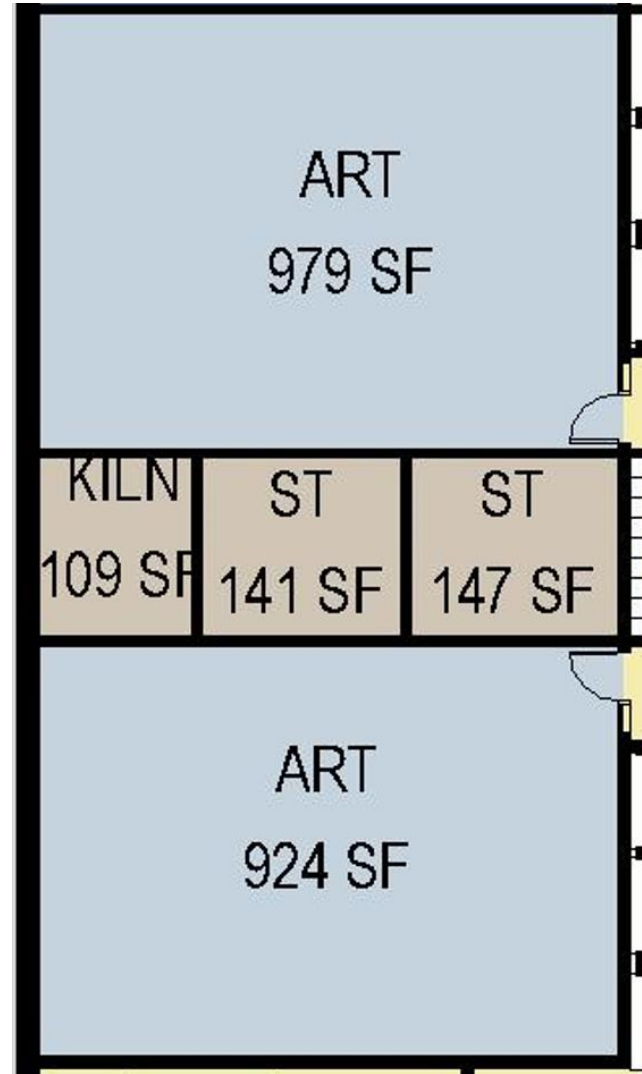




BAY BROOK ES/MS ART CLASSROOM



BAY BROOK ES/MS ART CLASSROOM

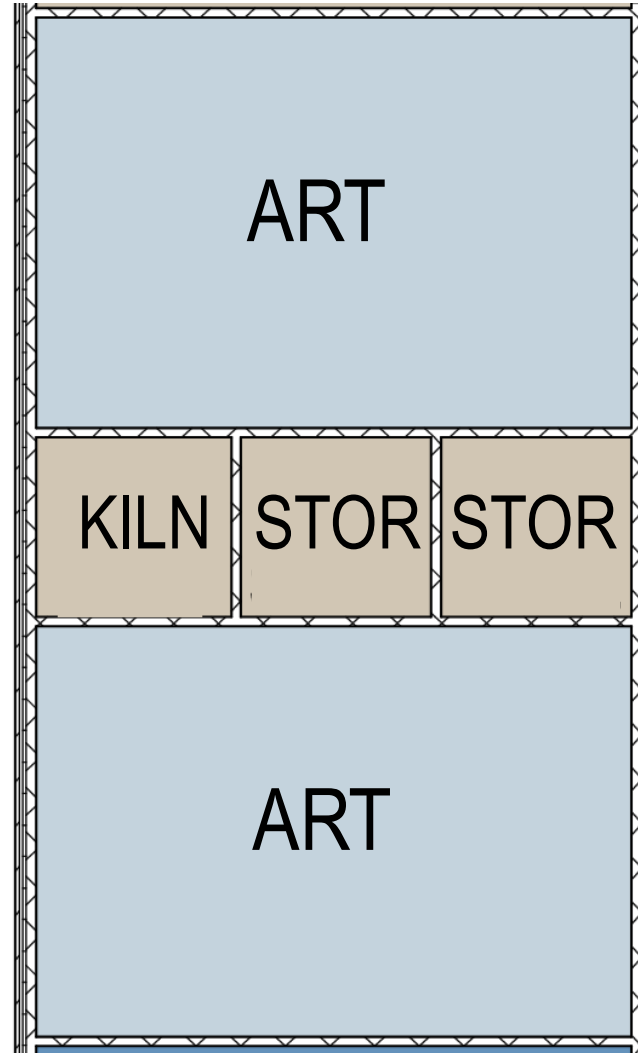




BAY BROOK ES/MS ART CLASSROOM



BAY BROOK ES/MS ART CLASSROOM

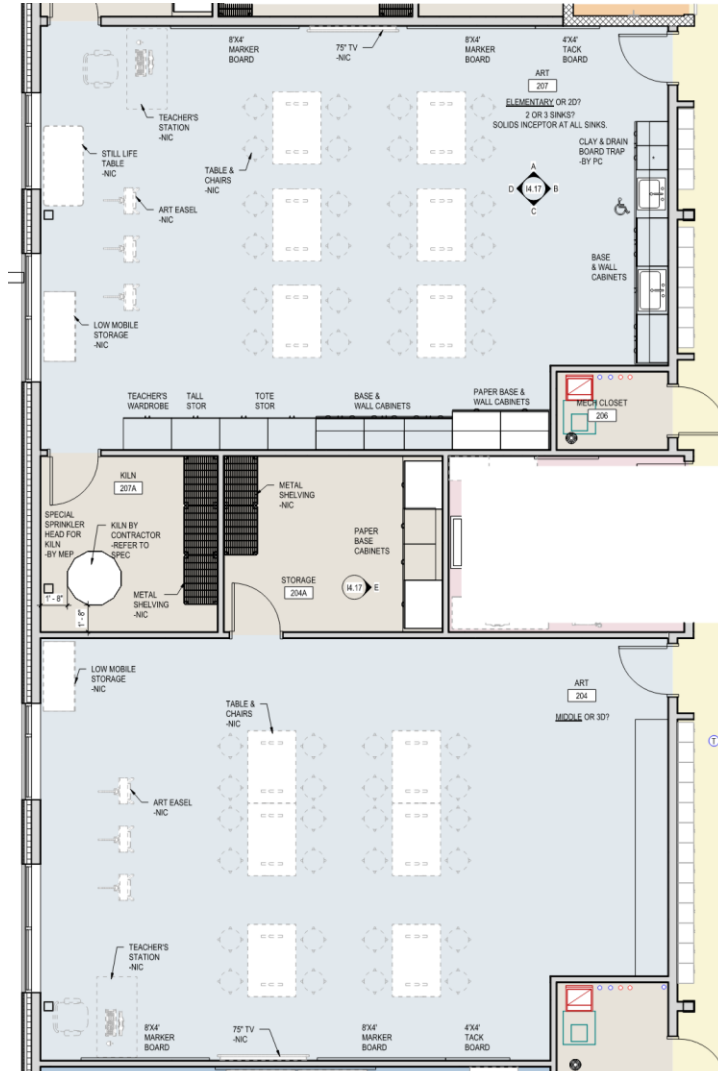




BAY BROOK ES/MS ART CLASSROOM

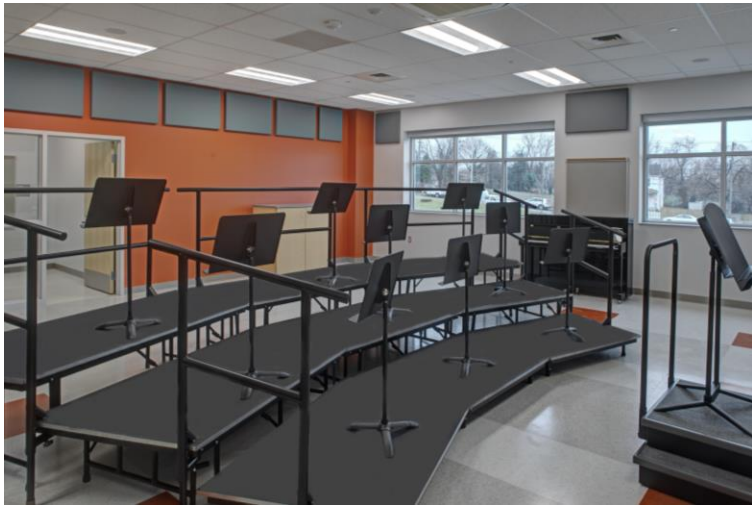


BAY BROOK ES/MS ART CLASSROOM

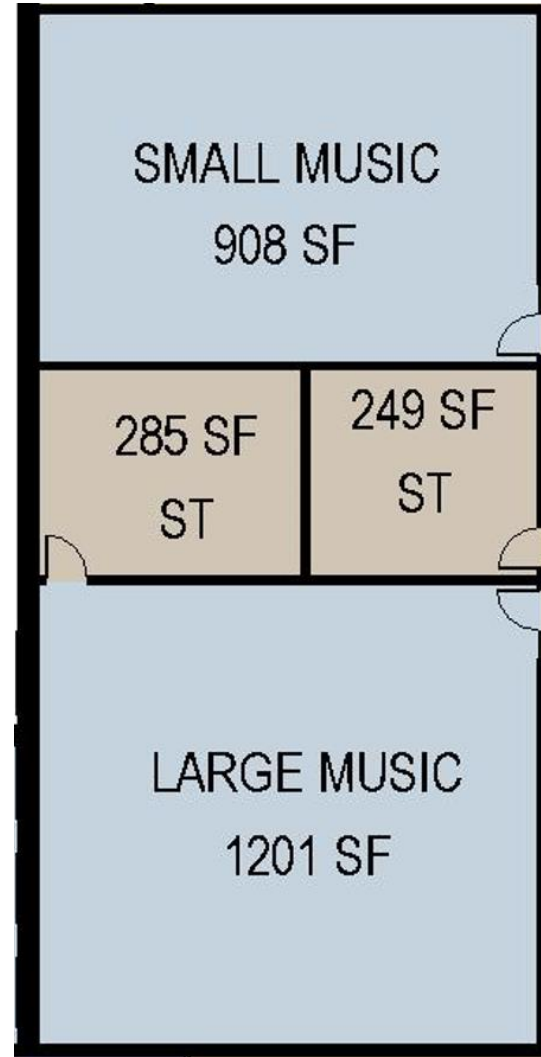




HAMBRIGHT ES MUSIC CLASSROOM

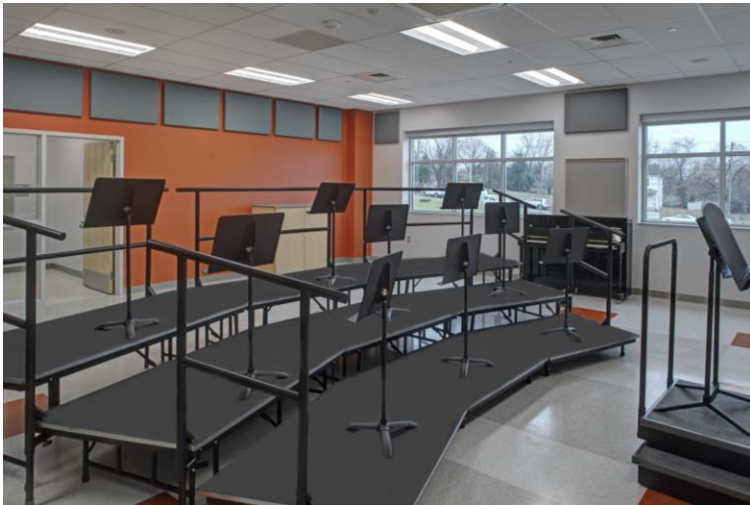


BAY BROOK ES/MS MUSIC CLASSROOM

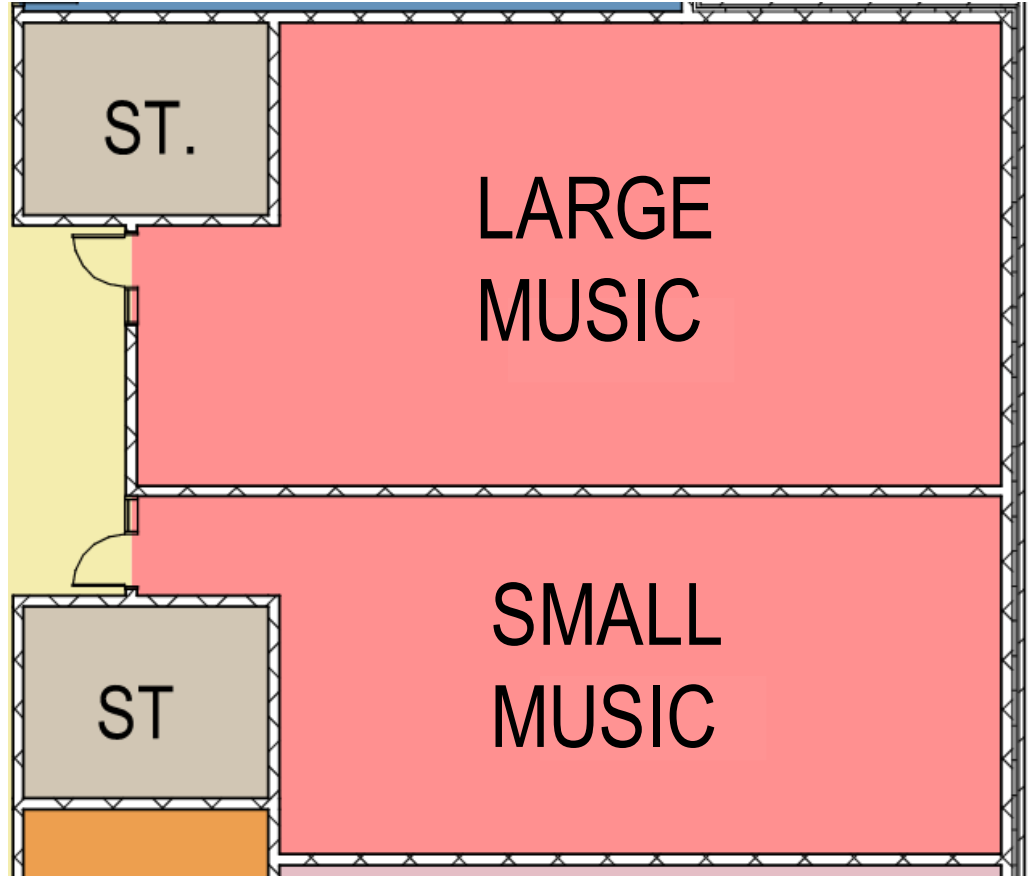




BARESVILLE ES MUSIC CLASSROOM

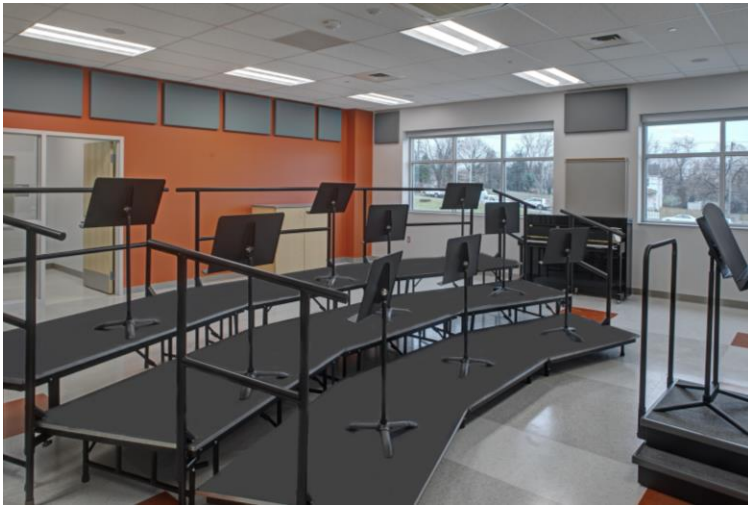


BAY BROOK ES/MS MUSIC CLASSROOM

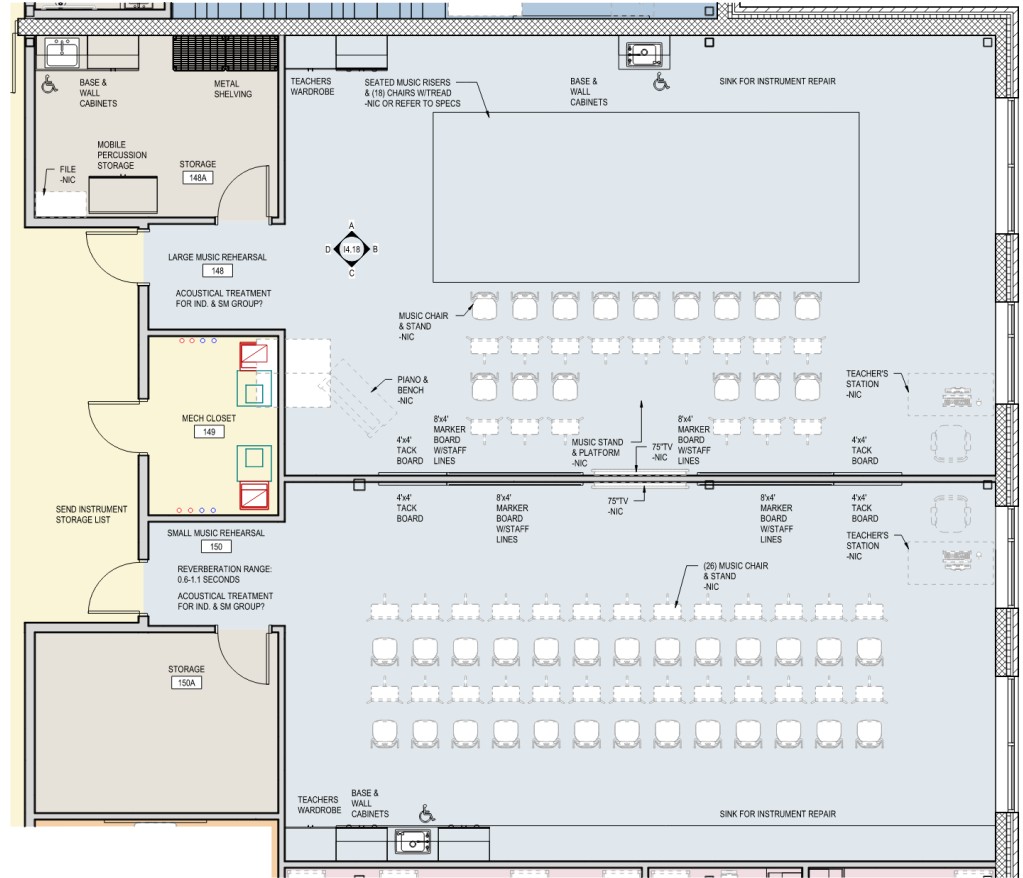




BARESVILLE ES MUSIC CLASSROOM



BAY BROOK ES/MS MUSIC CLASSROOM

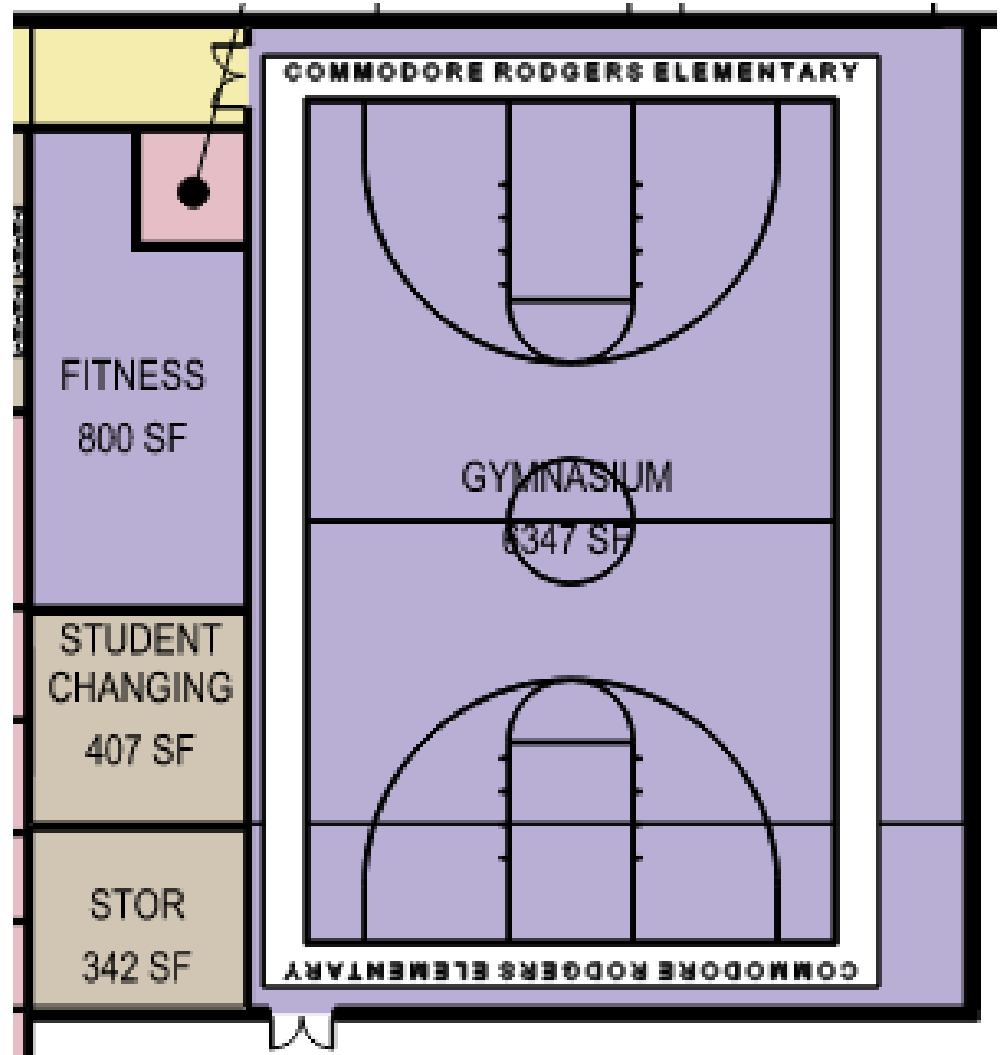




MONTEBELLO ES/MS GYMNASIUM



BAY BROOK ES/MS GYMNASIUM



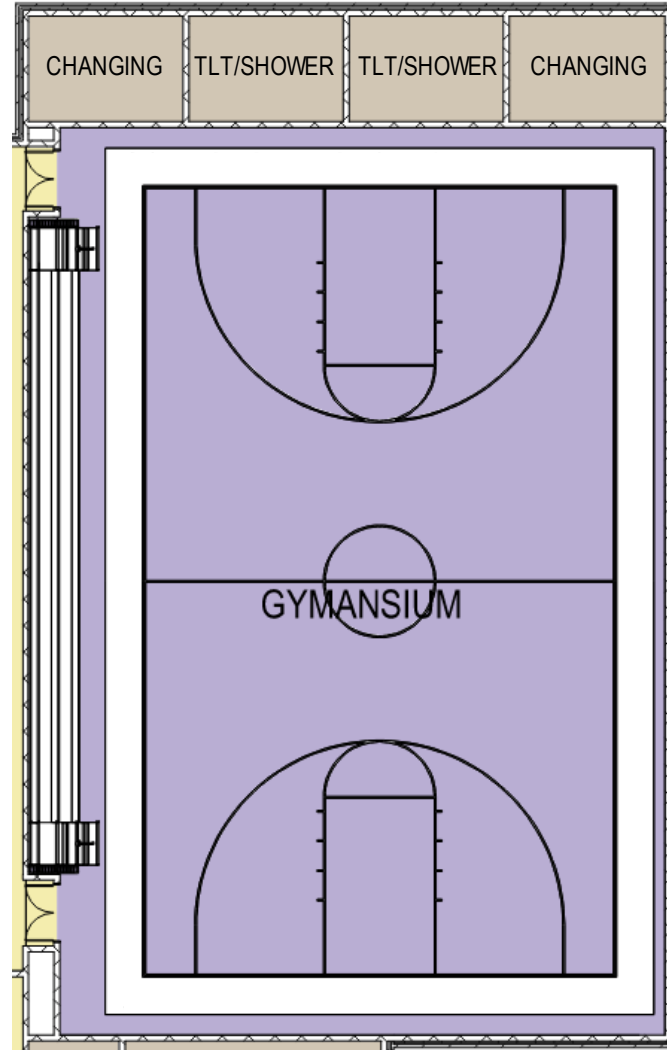




WALTER P CARTER ES/MS GYMNASIUM



FORT WASHINGTON ES GYMNASIUM

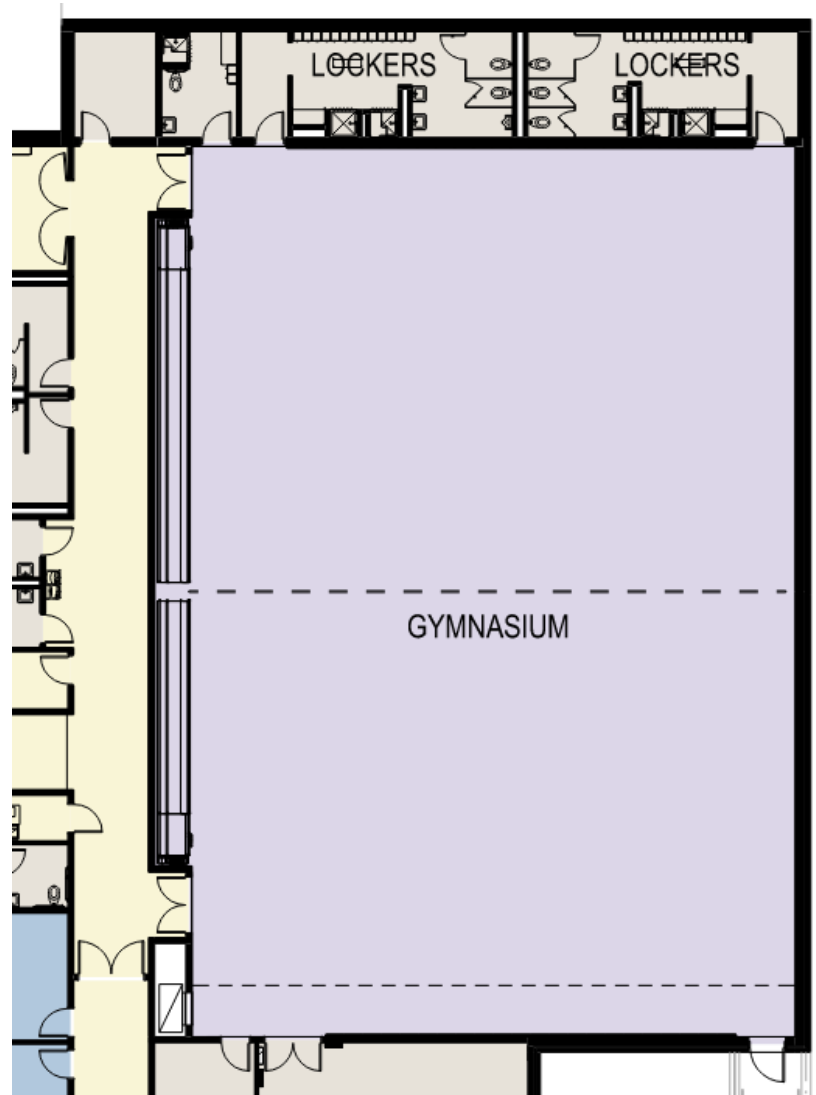




WALTER P CARTER ES/MS GYMNASIUM



FORT WASHINGTON ES GYMNASIUM

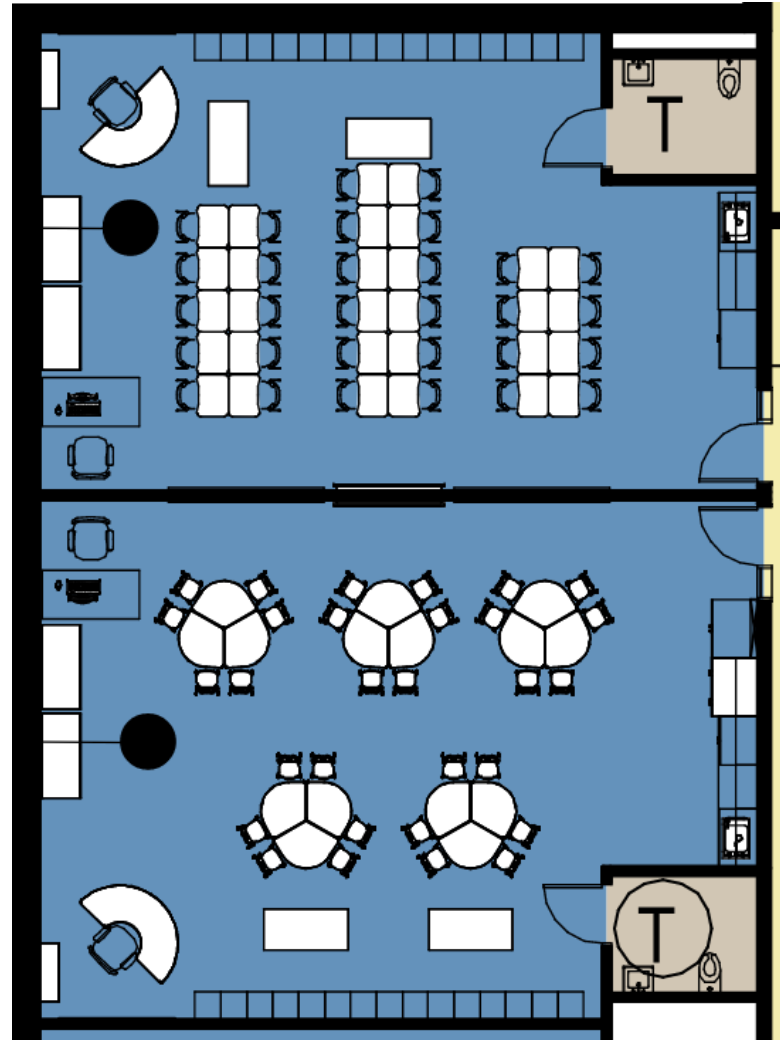




BAY BROOK ES/MS CLASSROOM



MONTEBELLO ES/MS CLASSROOM

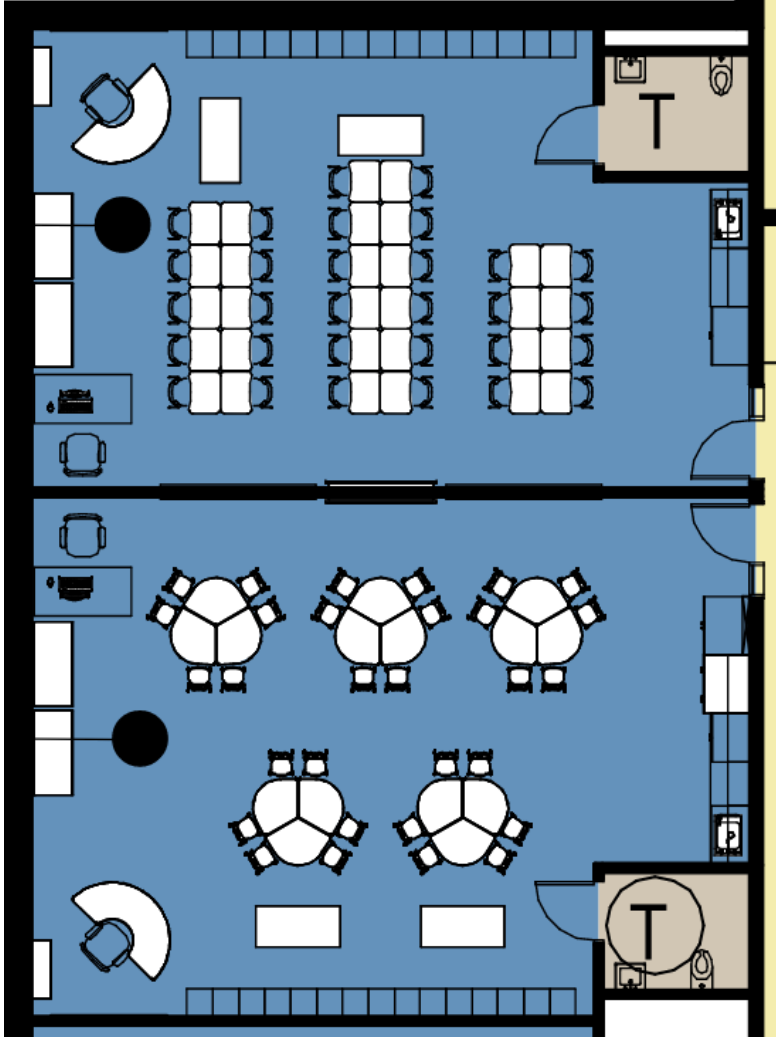




BAY BROOK ES/MS CLASSROOM



MONTEBELLO ES/MS CLASSROOM





BAY BROOK ES/MS CLASSROOM



MONTEBELLO ES/MS CLASSROOM





OPTION 1







OPTION 2



[www.baltimore21stcenturyschools.org](http://www.baltimore21stcenturyschools.org) @21stCenturySchoolBuildingProgram



# Questions?

---

## Program Contacts

**Sr. Community & Public Relations Coordinator**

**Ivy McNeill**

[idmcneill01@bcps.k12.md.us](mailto:idmcneill01@bcps.k12.md.us)

**Community & Public Relations Manager**

**Renee Stainrod**

[rastainrod@bcps.k12.md.us](mailto:rastainrod@bcps.k12.md.us)

---

## Program Information

**21<sup>st</sup> Century School Buildings Program Office**

**(443) 642-4600**

[www.baltimore21stcenturyschools.org](http://www.baltimore21stcenturyschools.org)

**Baltimore City Public Schools**

200 East North Avenue Room 407-B

Baltimore MD 21202

(443) 642-4600

Thank You.

This presentation was brought to you by the Baltimore City Schools Operations Department.

