



## **21<sup>st</sup> Century School Buildings Program**

Cross Country Elementary/Middle School Replacement - Community Meeting Concept Design

April 15, 2021

Presenters	Agenda
<p><b>Renee Stainrod</b>  Manager, Community &amp; Public Relations  21<sup>st</sup> Century School Buildings Program</p> <p><b>Ivy McNeill</b>  Sr. Program Coordinator, Community &amp; Engagement  21<sup>st</sup> Century School Buildings Program</p> <p><b>Miriam Carrion</b>  Spanish Translator  Hispanic Advocate</p> <p><b>Michael McBride</b>  Director of Design  21<sup>st</sup> Century School Buildings Program</p> <p><b>Catherine Acker</b>  Project Manager  MSA</p> <p><b>Priya Iyer</b>  Project Architect  Colimore Architects, an ATI Company</p>	<ul style="list-style-type: none"> <li>• Introduction</li> <li>• Revised Project Schedule</li> <li>• Flood Plain Boundaries</li> <li>• Conceptual Design Review</li> <li>• Duration of Design Phase</li> <li>• Project Schedule</li> <li>• Community Meeting Info</li> <li>• Questions</li> </ul>

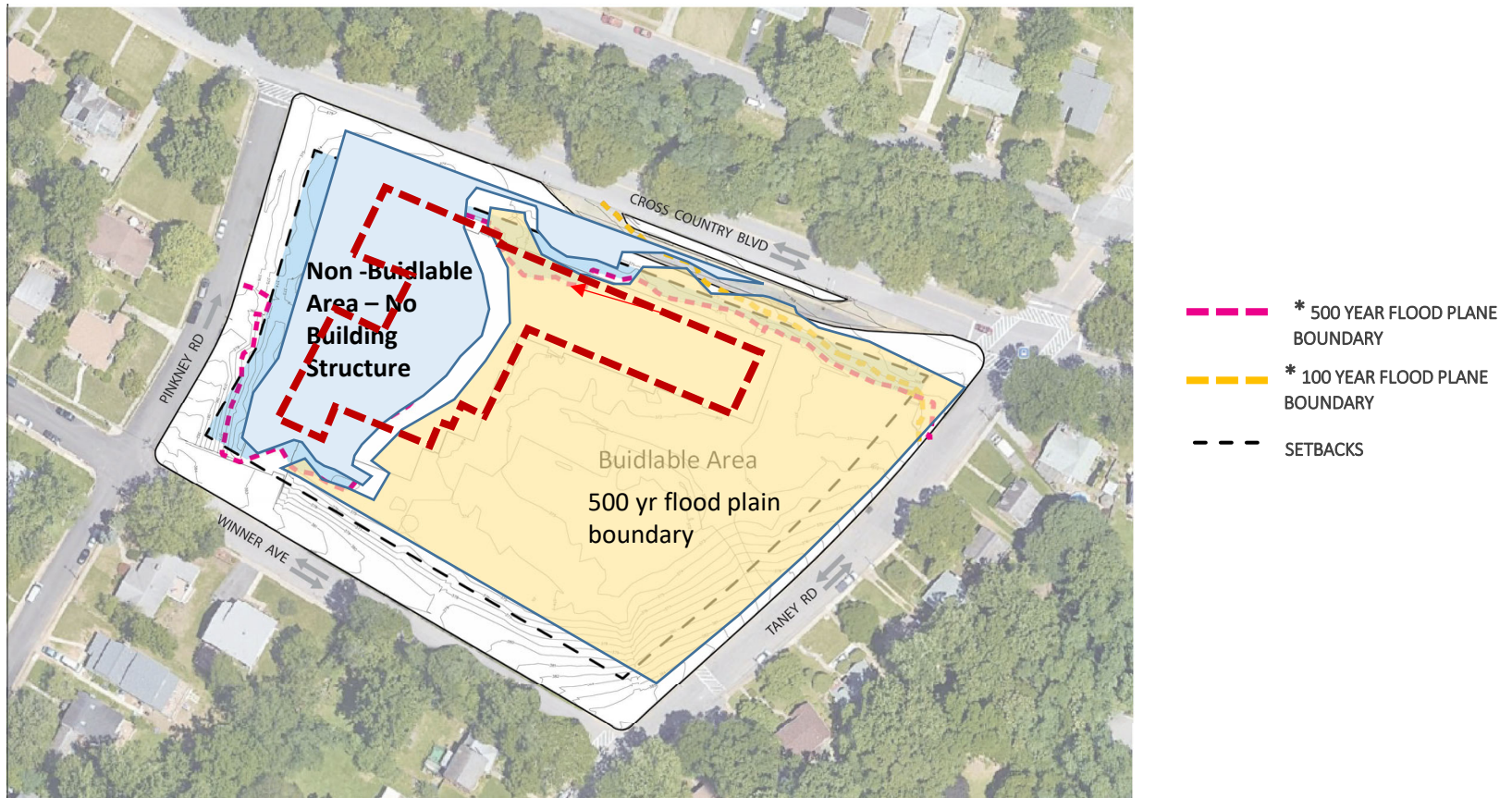
## Revised Project Schedule

---

Date	Action
October 2019	Design paused due to discovery of FEMA re-mapping the area from a 100 to 500-year flood plain
Nov – October 2020	Coordination with City Inter-Agencies/ FEMA/ AE team for site investigations and design options
November 2020	Justification reviewed by the City School Board of Commissioners as a Replacement vs Renovation/ Addition
December 2019	Approved by the MOU partners at quarterly meeting
January 2021	Educational Specifications revised
Jan – December 2021	Design
October 2021	Demolition/ Abatement
Spring 2022 – Summer 2023	Construction
September 2023	Occupancy



## Flood Plain Boundaries



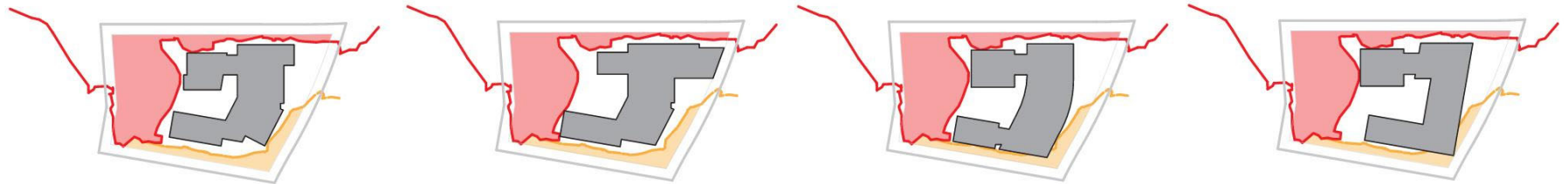




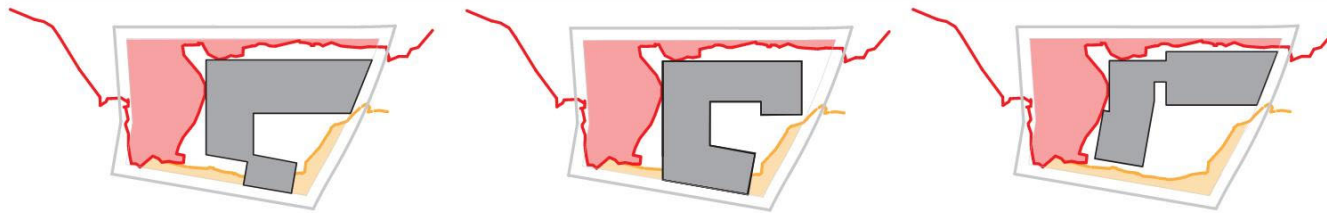
**Phase I – Demolition of the Existing School**  
**Phase II – Construction of the Replacement Building**



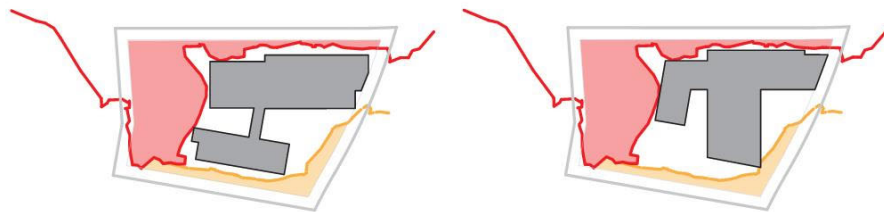
Cross Country Elementary /Middle School Replacement  
Community Meeting: Concept Design April 15, 2021



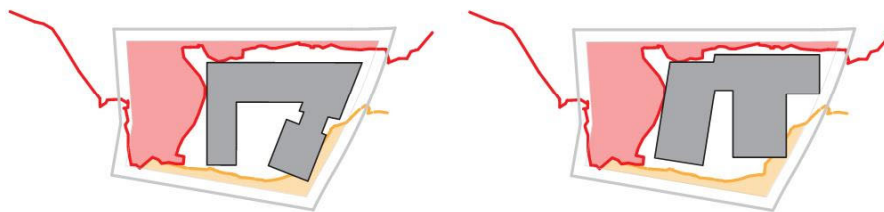
APPROACH OPTION A



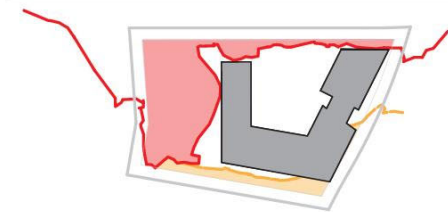
APPROACH OPTION B



APPROACH OPTION C

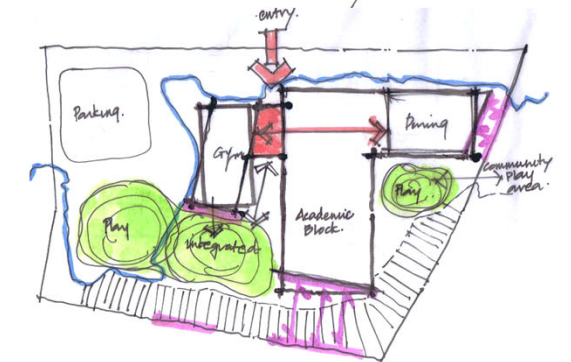
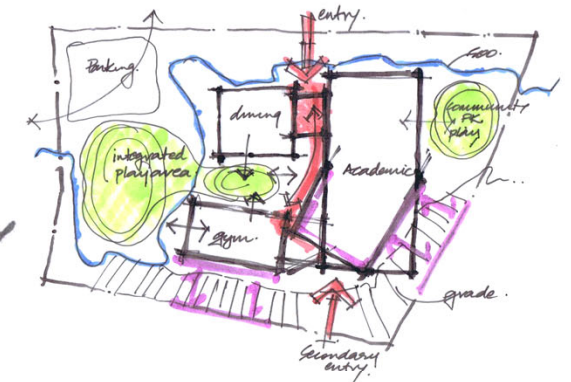
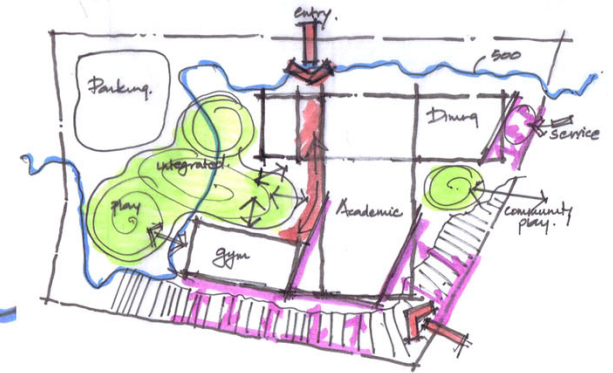
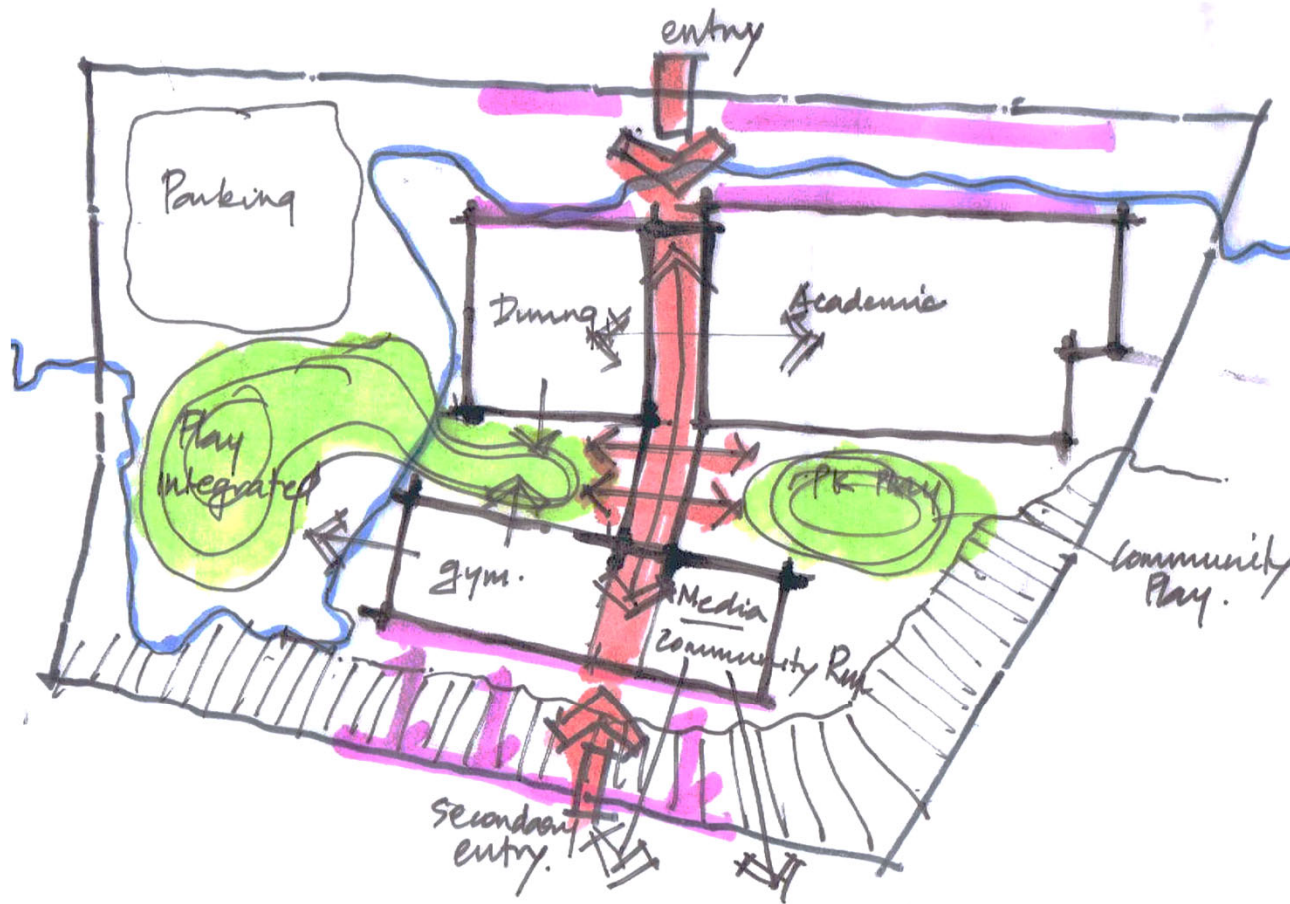


APPROACH OPTION D

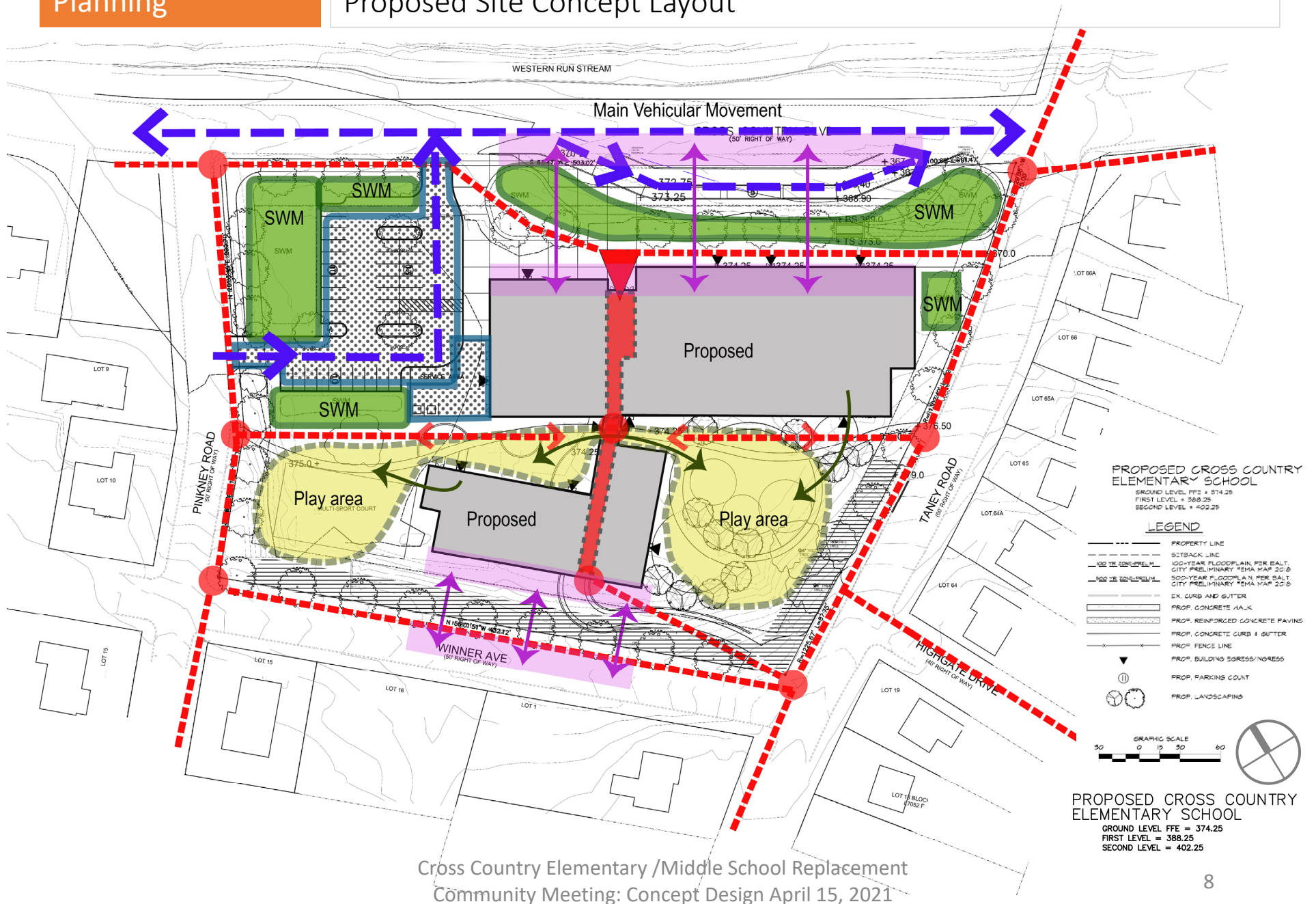


APPROACH OPTION E



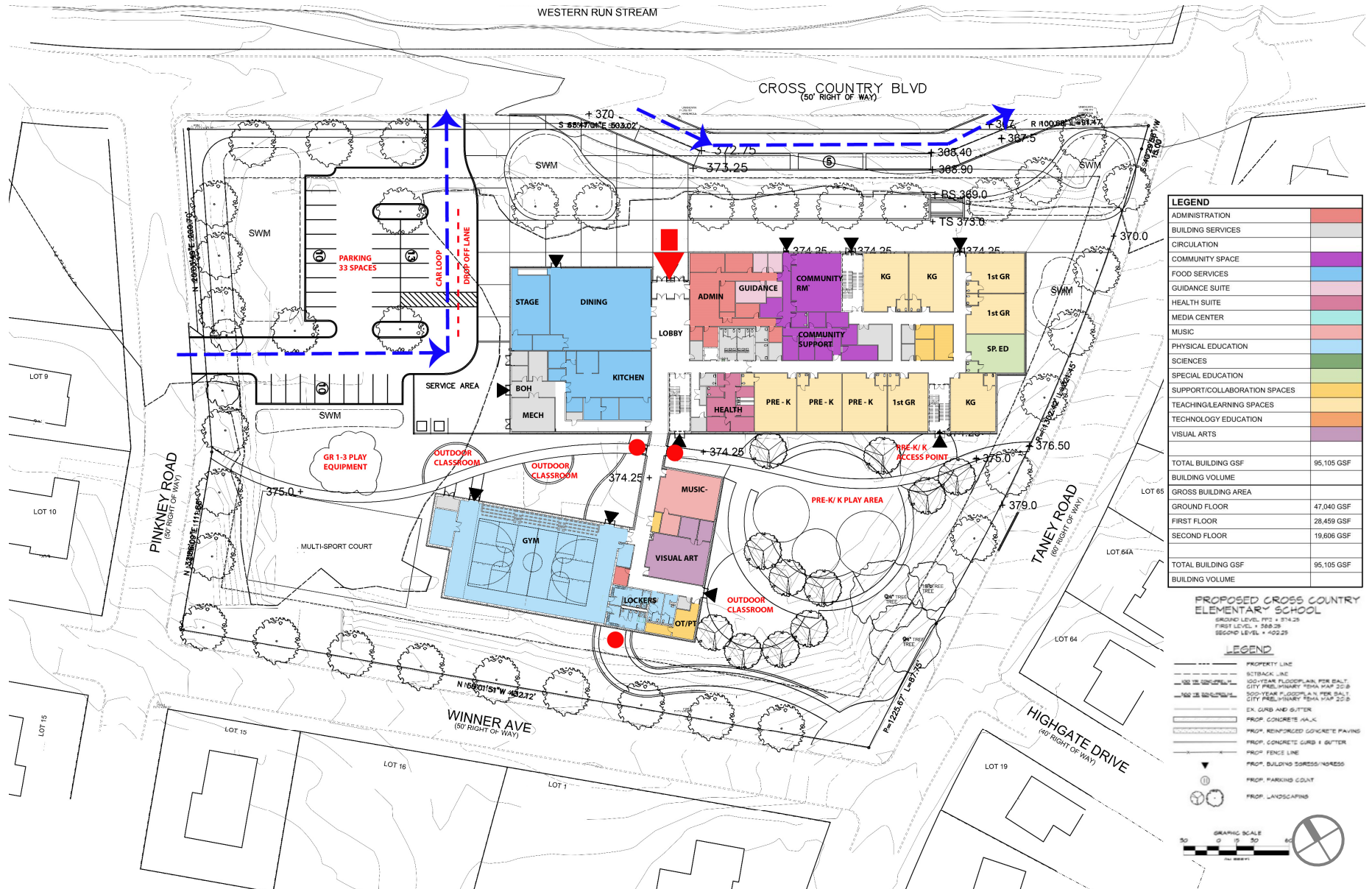






# Planning

## Proposed Site Plan



Cross Country Elementary / Middle School Replacement  
 Community Meeting: Concept Design April 15, 2021

# Planning

## Proposed Ground Floor





# Planning

## Proposed First Floor

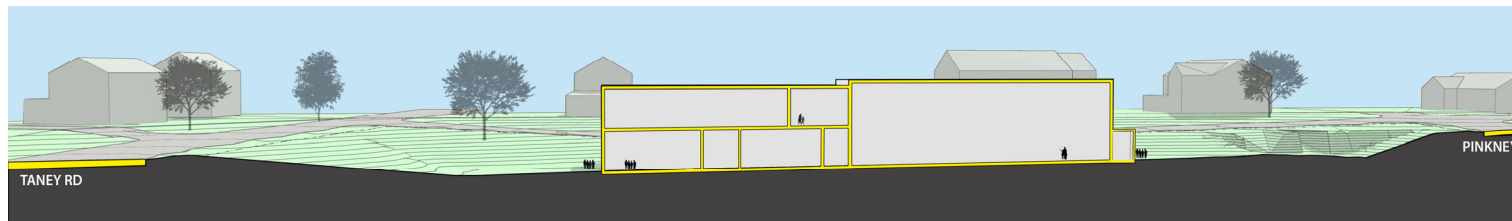
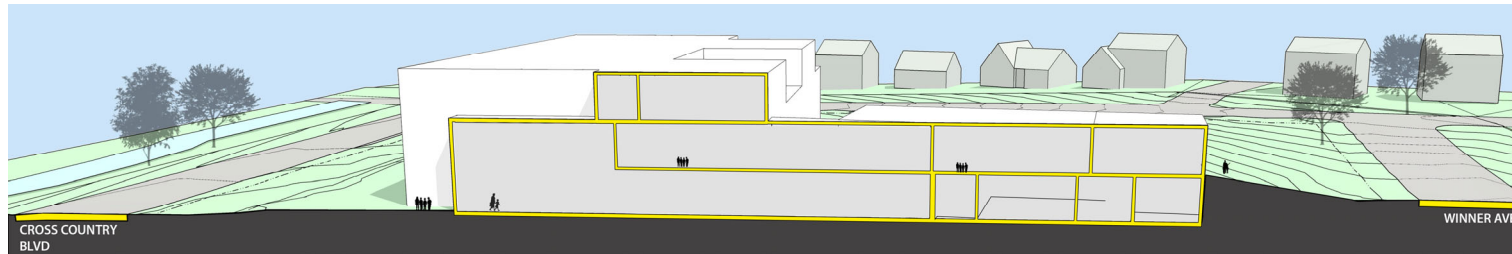
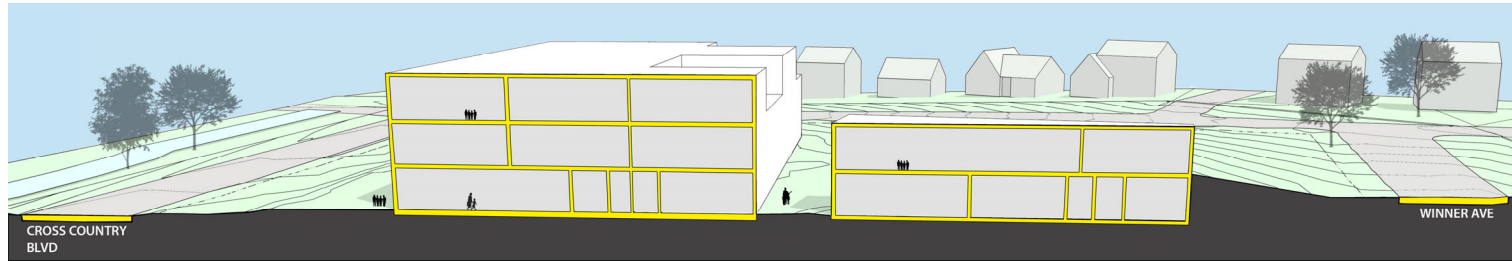


# Planning

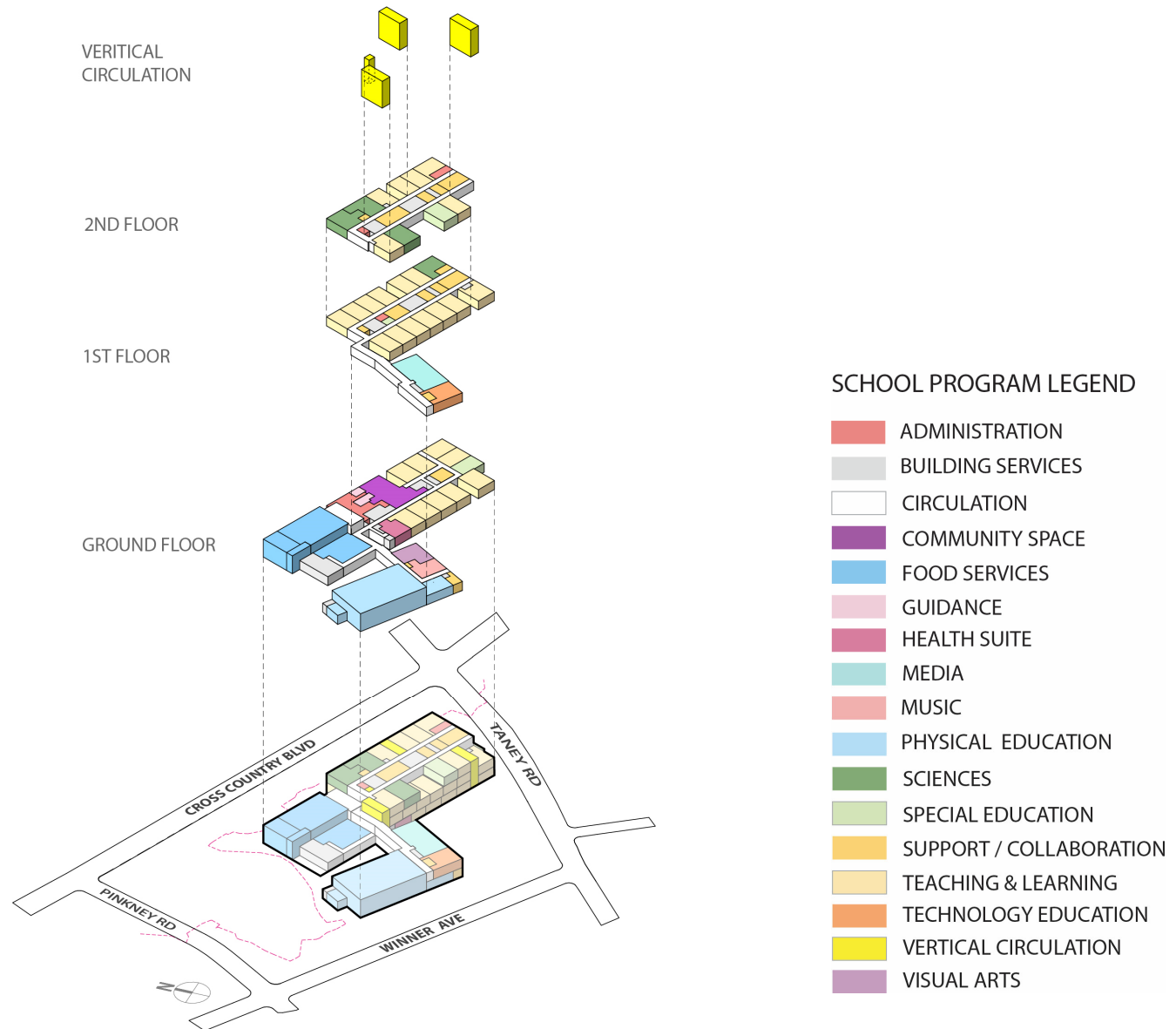
## Proposed Second Floor

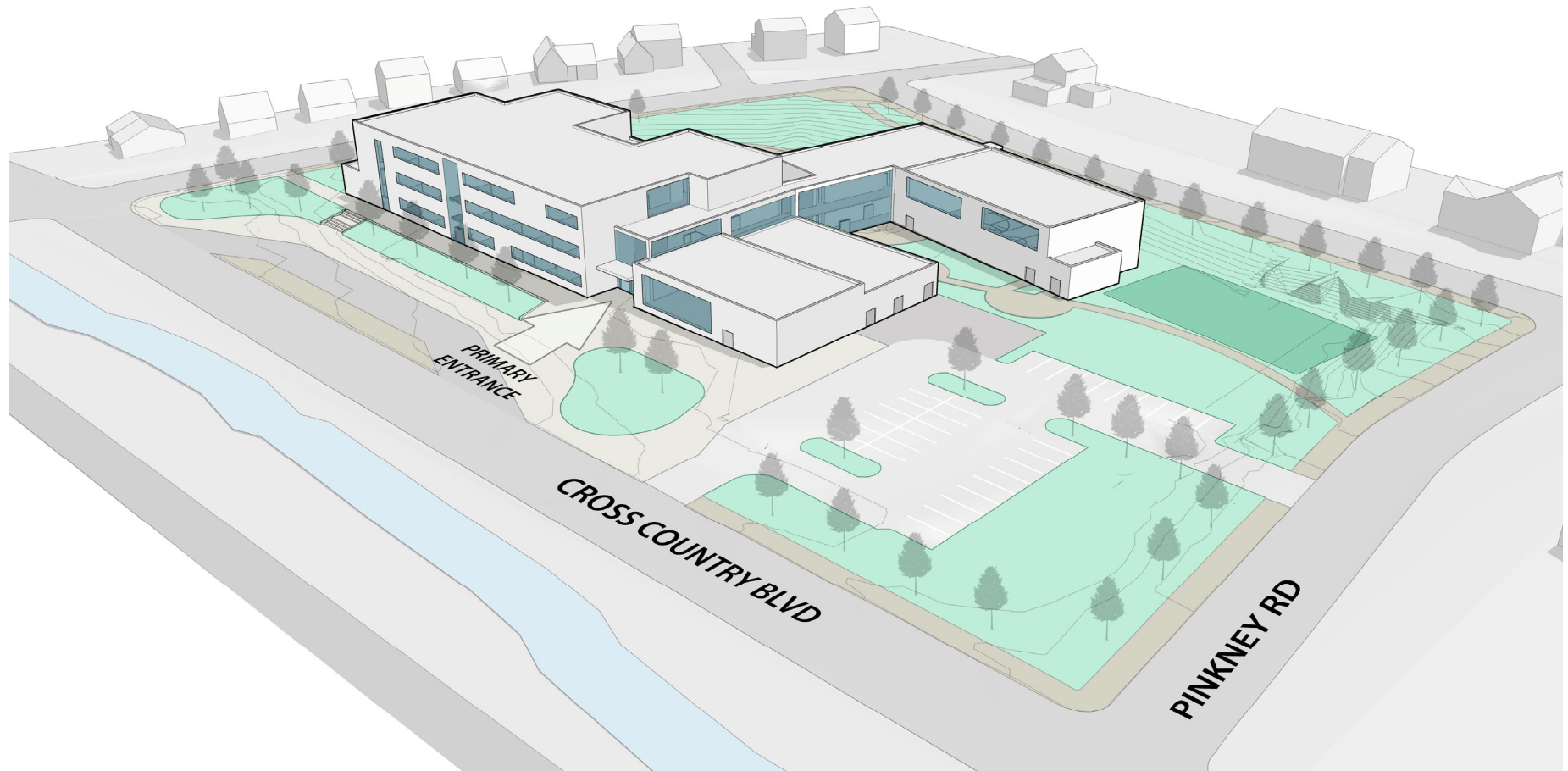


LEGEND	
ADMINISTRATION	
BUILDING SERVICES	
CIRCULATION	
COMMUNITY SPACE	
FOOD SERVICES	
GUIDANCE SUITE	
HEALTH SUITE	
MEDIA CENTER	
MUSIC	
PHYSICAL EDUCATION	
SCIENCES	
SPECIAL EDUCATION	
SUPPORT/COLLABORATION SPACES	
TEACHING/LEARNING SPACES	
TECHNOLOGY EDUCATION	
VISUAL ARTS	
TOTAL BUILDING GSF	95,105 GSF
BUILDING VOLUME	
GROSS BUILDING AREA	
GROUND FLOOR	47,040 GSF
FIRST FLOOR	28,459 GSF
SECOND FLOOR	19,606 GSF
TOTAL BUILDING GSF	95,105 GSF
BUILDING VOLUME	

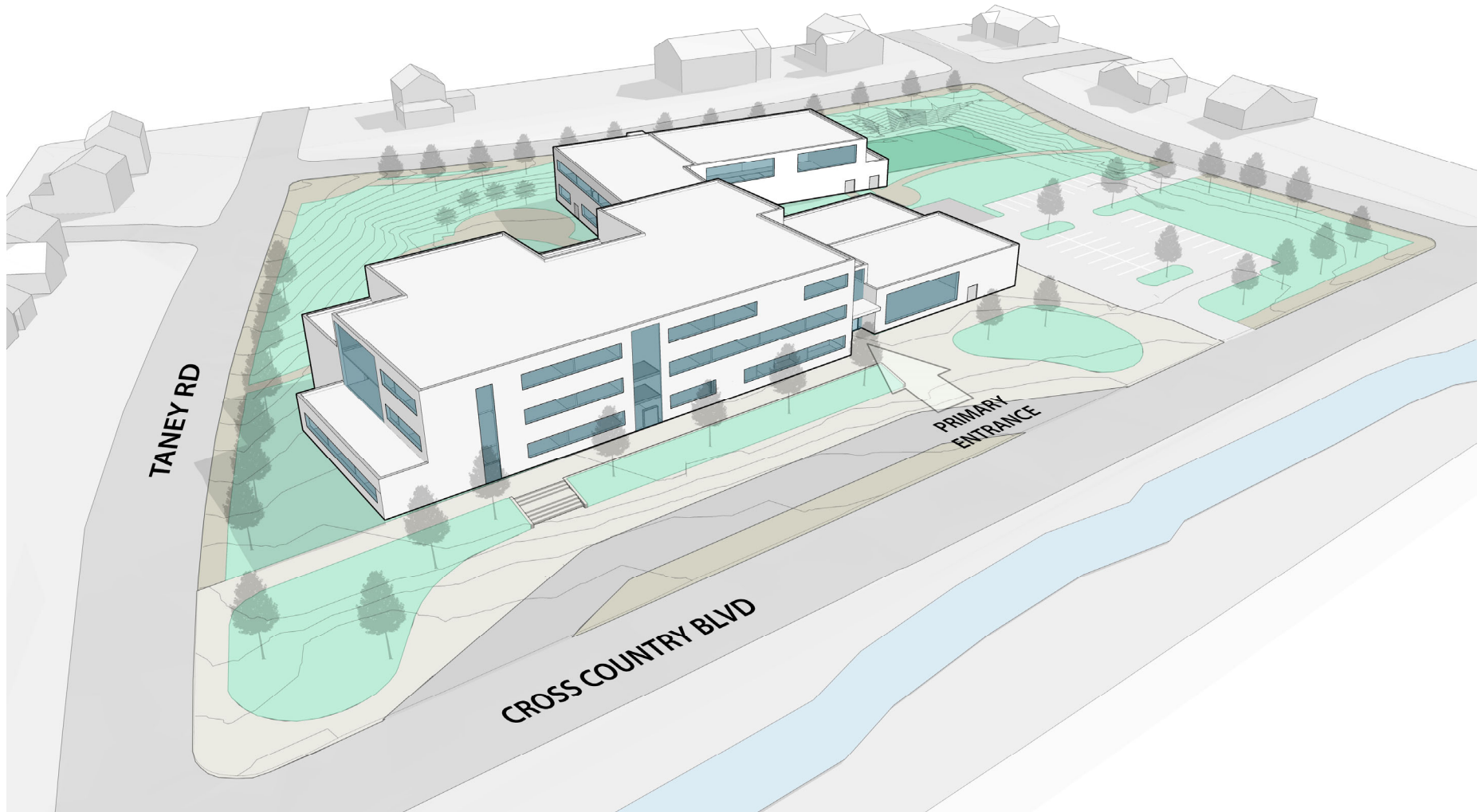






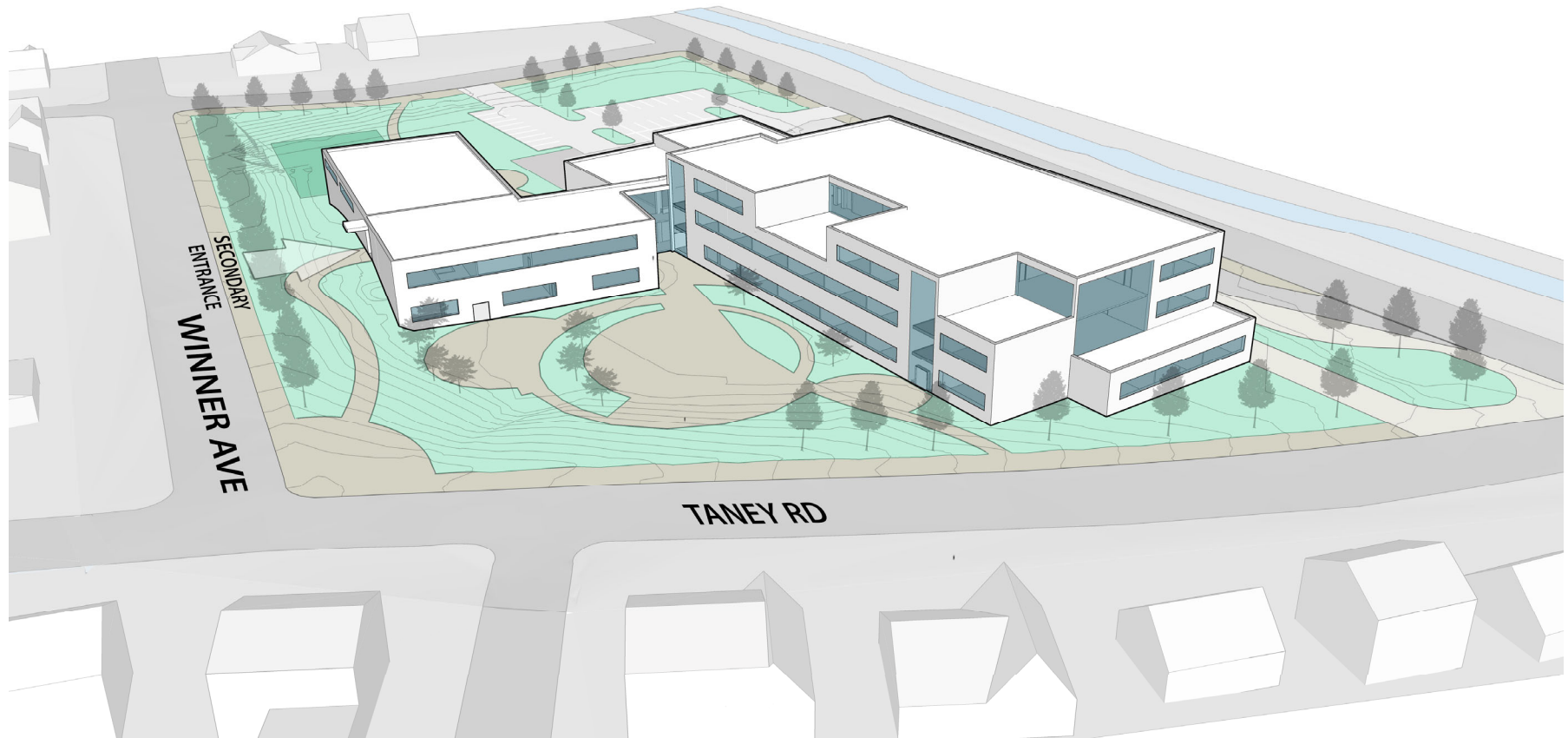


NORTHWEST CORNER – CROSS COUNTRY BLVD & PINKNEY RD

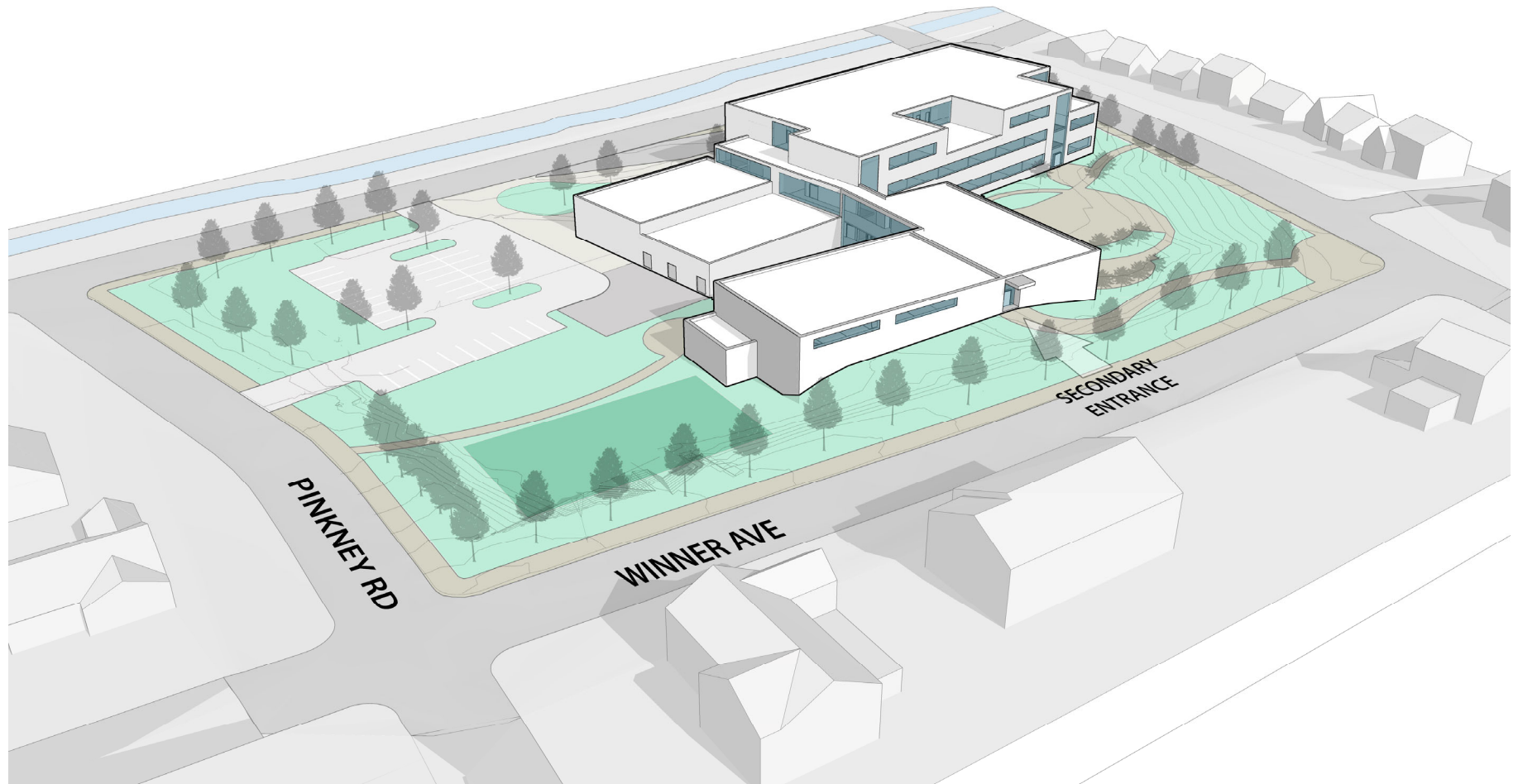


NORTHEAST CORNER – CROSS COUNTRY BLVD & TANEY RD





SOUTHEAST CORNER – WINNER AVE & TANEY RD



SOUTHWEST CORNER – WINNER AVE & PINKNEY RD

## Design

## Design Schedule

Planning (6-8 Months)

Pre-Design (2-4 Months)

Design (6-8 Months)



Building Opening Summer 2023

Concept Design  
March 2021



Schematic Design  
May 2021



Design Development  
July 2021



Final Drawings  
December 2021





# Overview

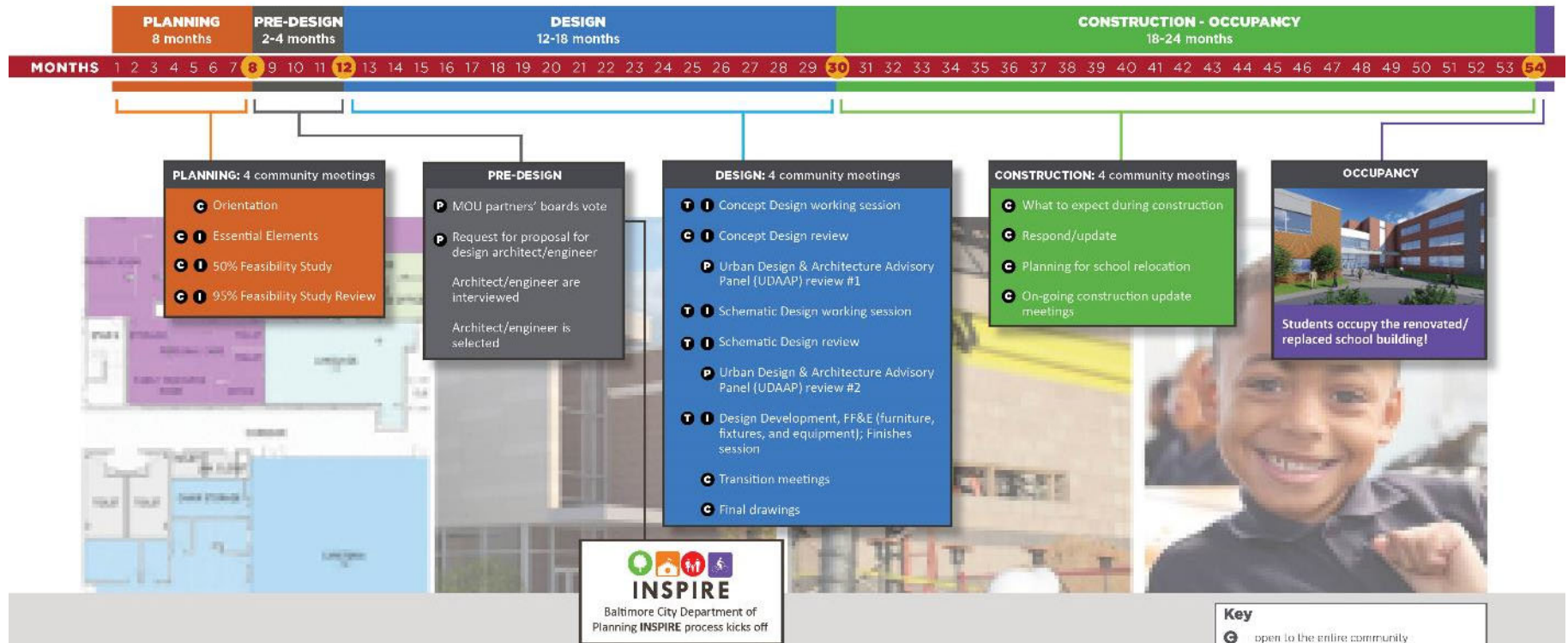
## Engagement Process



### 21st Century School Buildings Engagement Process

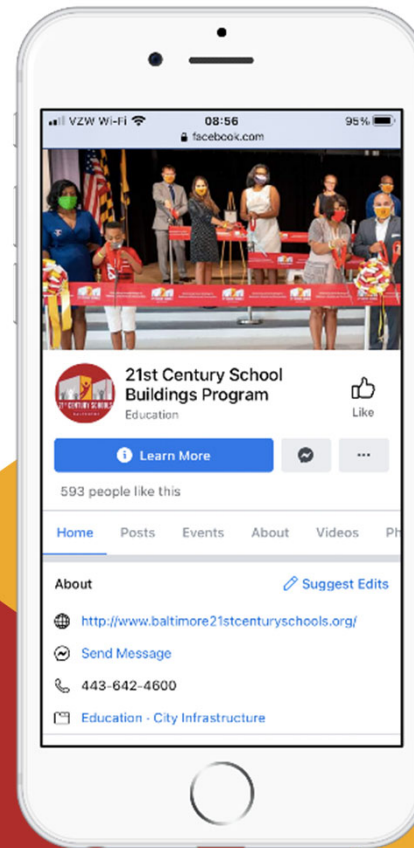
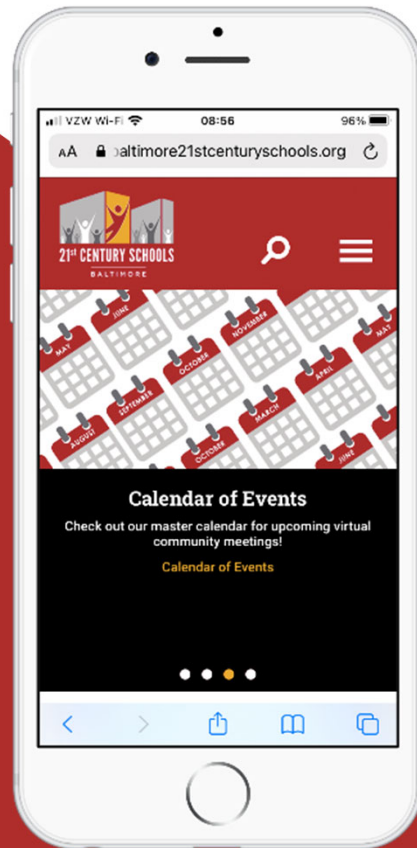
The essential role of school stakeholders in the 21st Century School Buildings process.

Each school is unique. Creating modern, high-quality learning environments that meet the needs of individual school communities and support their vision for student success is a collaborative effort. The process for the design of each school building takes 18-24 months. The process for the construction of a school takes an additional 18-24 months marked by multiple opportunities for school communities to provide input and feedback.



Updated 1/13/2020

[www.baltimore21stcenturyschools.org](http://www.baltimore21stcenturyschools.org) @21stCenturySchoolBuildingProgram



## Questions?

---

### Program Contacts

**Sr. Community & Public Relations Coordinator**

**Ivy McNeil**

idmcneill01@bcps.k12.md.us

**Community & Public Relations Manager**

**Renee Stainrod**

rastainrod@bcps.k12.md.us

---

### Program Information

**21<sup>st</sup> Century School Buildings Program Office**

(443) 642-4600





Thank You.

This presentation was brought to you by the 21<sup>st</sup> Century School Buildings Program.



[www.baltimore21stcenturyschools.org](http://www.baltimore21stcenturyschools.org)

**21st Century School Buildings Program**

Baltimore City Public Schools  
200 East North Avenue Room 407-B  
Baltimore MD 21202  
(443) 642-4600

**Dorothy Hellman**

Executive Director, 21st Century Buildings Program  
Baltimore City Public Schools

**Gary McGuigan**

Executive Vice President, Capital Development Division  
Maryland Stadium Authority

**Tisha Edwards**

Mayor's Health, Human Services, Education and Youth  
City of Baltimore – Office of Children and Family Success

**Robert Gorrell**

Executive Director, Public School Construction Program  
State of Maryland

BALTIMORE CITY  
PUBLIC SCHOOLS

