



21st Century School Buildings Program

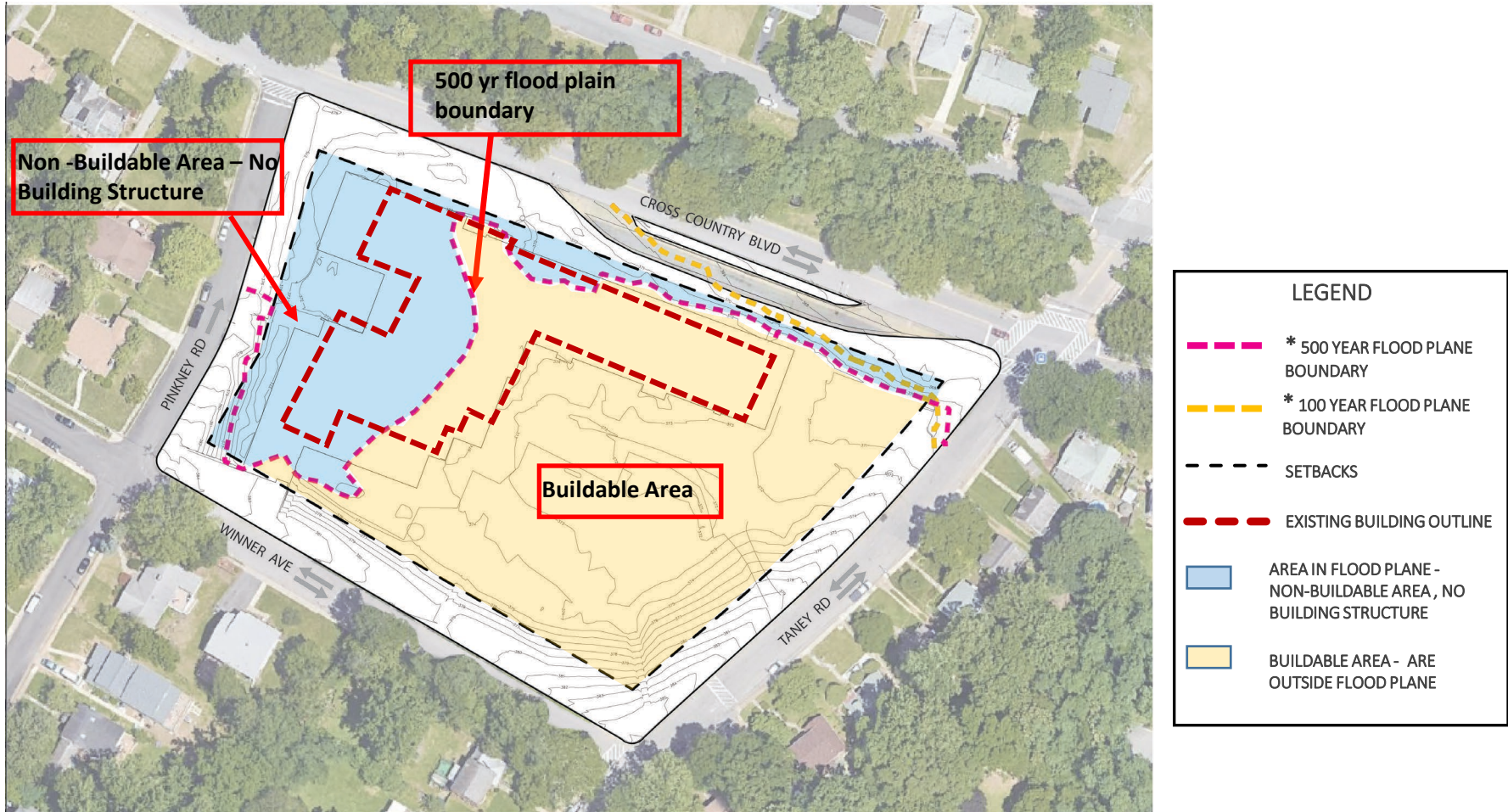
Cross Country Elementary/Middle School Replacement - Community Meeting #5
Construction Kick-Off & Final Design Meeting
January 27, 2022

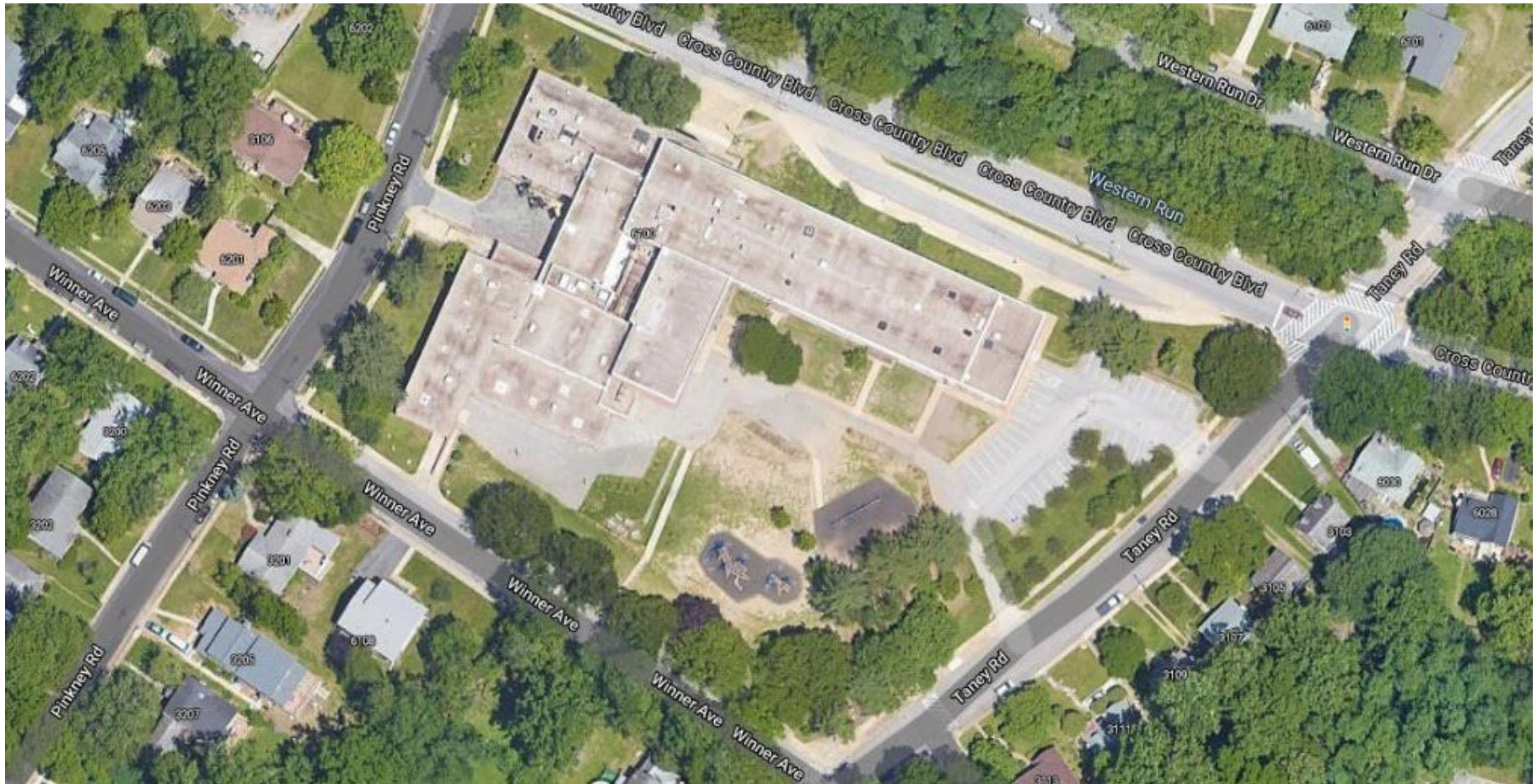
Presenters	Agenda
<p>Renee Stainrod Manager, Community & Public Relations 21st Century School Buildings Program</p> <p>Ivy McNeill Sr. Program Coordinator, Community & Engagement 21st Century School Buildings Program</p> <p>Miriam Carrion Spanish Translator Hispanic Advocate</p> <p>Michael McBride Interim Executive Director 21st Century School Buildings Program</p> <p>Catherine Acker Project Manager MSA</p> <p>Priya Iyer Project Architect Colimore Architects, an ATI Company</p> <p>Robert Stone Sr. Project Manager Turner Construction Company</p>	<ul style="list-style-type: none"> • Introduction • Project Schedule • Flood Plain Boundaries • Design Review • Duration of Design Phase • Construction Overview • Community Meeting Info • Questions

Project Schedule

Date	Action
Oct. 2019	Design paused due to discovery of FEMA re-mapping the area from a 100 to 500-year flood plain
Nov. 2020 – Oct. 2020	Coordination with City Inter-Agencies/FEMA/AE team for site investigations and design options
Nov. 2020	Justification reviewed by the City School Board of Commissioners as a Replacement vs Renovation/Addition
Dec. 2019	Approved by the MOU partners at quarterly meeting
Jan. 2021	Educational Specifications revised
Jan. 2021 – Dec. 2021	Design
Nov. 2021 – Feb. 2022	Demolition/Abatement
Feb. 2022– Summer 2023	Construction
Sept. 2023	Occupancy

Flood Plain Boundaries

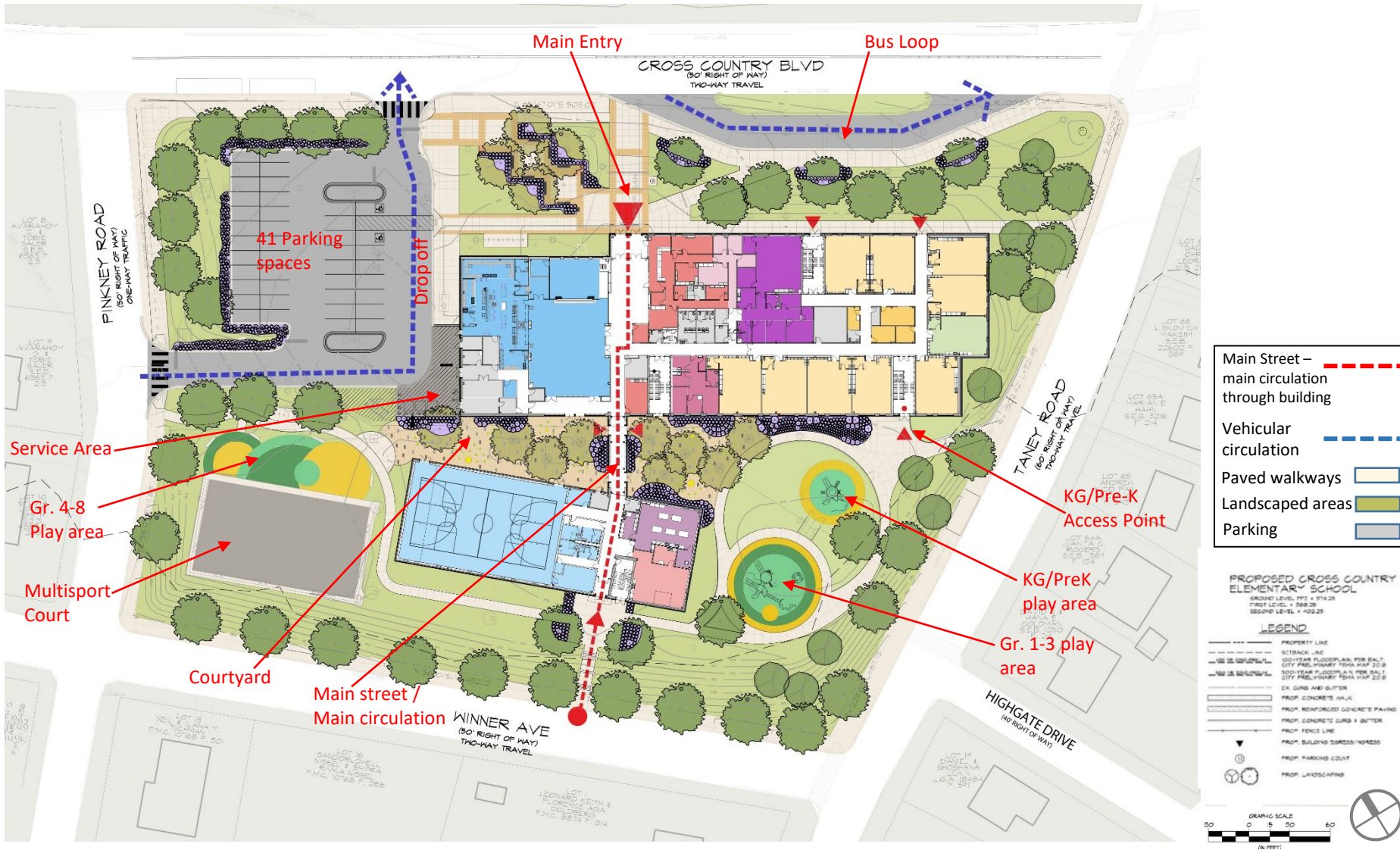




Phase I – Demolition of the Existing School

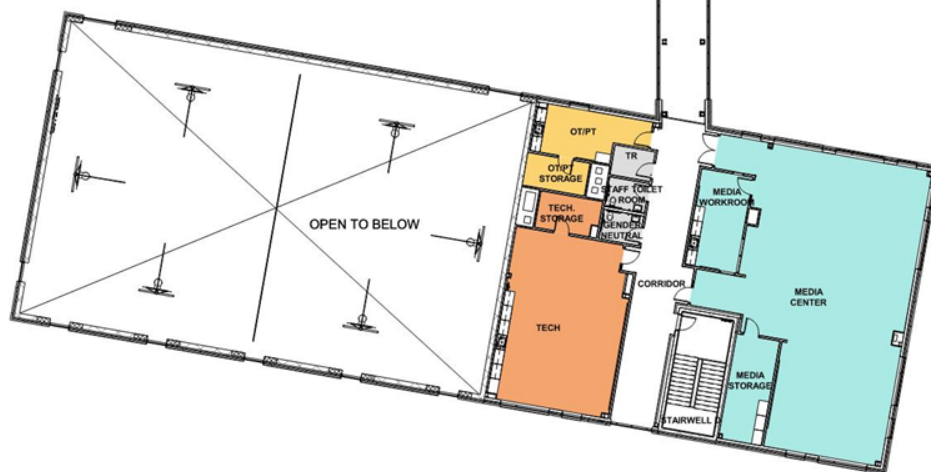
Phase II – Construction of the Replacement Building







LEGEND	
ADMINISTRATION	
BUILDING SERVICES	
CIRCULATION	
COMMUNITY SPACE	
FOOD SERVICES	
GUIDANCE SUITE	
HEALTH SUITE	
MEDIA CENTER	
MUSIC	
PHYSICAL EDUCATION	
SCIENCES	
SPECIAL EDUCATION	
SUPPORT/COLLABORATION SPACES	
TEACHING/LEARNING SPACES	
TECHNOLOGY EDUCATION	
VISUAL ARTS	
TOTAL BUILDING GSF	95,105 GSF
BUILDING VOLUME	
GROSS BUILDING AREA	
GROUND FLOOR	47,040 GSF
FIRST FLOOR	28,459 GSF
SECOND FLOOR	19,606 GSF
TOTAL BUILDING GSF	95,105 GSF
BUILDING VOLUME	



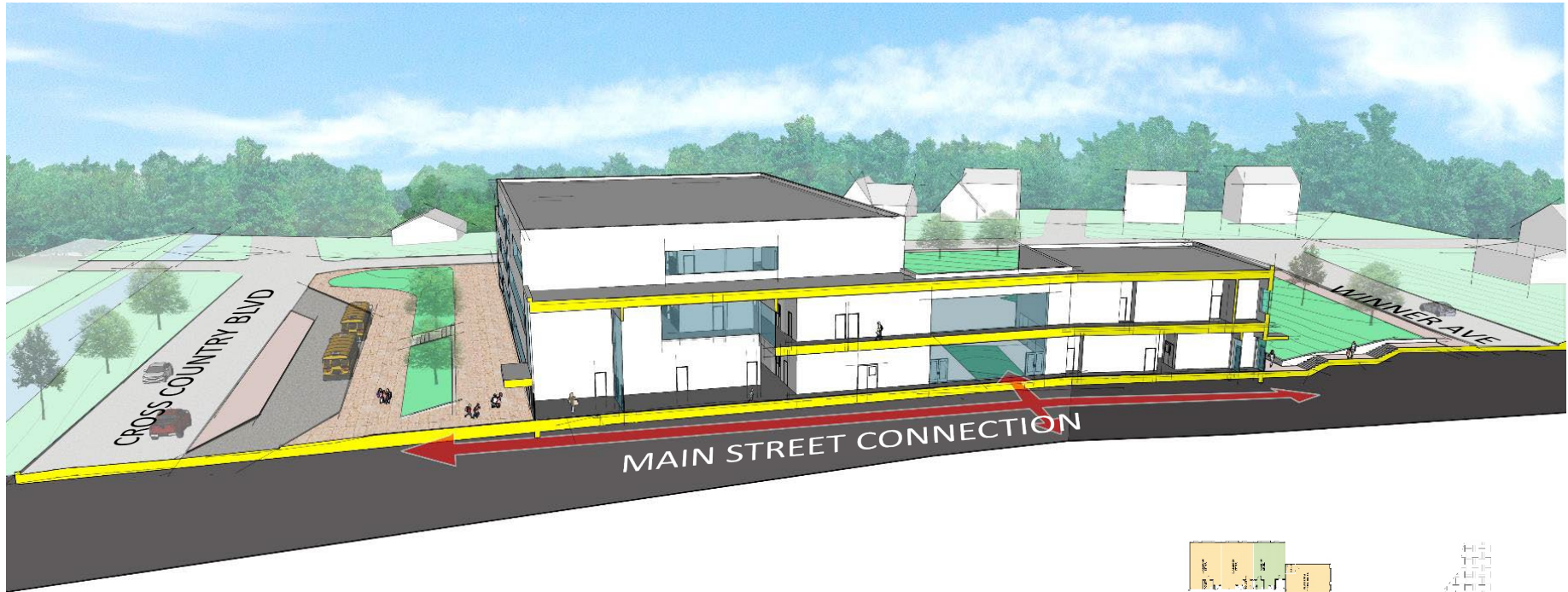
LEGEND	
ADMINISTRATION	
BUILDING SERVICES	
CIRCULATION	
COMMUNITY SPACE	
FOOD SERVICES	
GUIDANCE SUITE	
HEALTH SUITE	
MEDIA CENTER	
MUSIC	
PHYSICAL EDUCATION	
SCIENCES	
SPECIAL EDUCATION	
SUPPORT/COLLABORATION SPACES	
TEACHING/LEARNING SPACES	
TECHNOLOGY EDUCATION	
VISUAL ARTS	
TOTAL BUILDING GSF	95,105 GSF
BUILDING VOLUME	
GROSS BUILDING AREA	
GROUND FLOOR	47,040 GSF
FIRST FLOOR	28,459 GSF
SECOND FLOOR	19,606 GSF
TOTAL BUILDING GSF	95,105 GSF
BUILDING VOLUME	

Proposed Third Floor

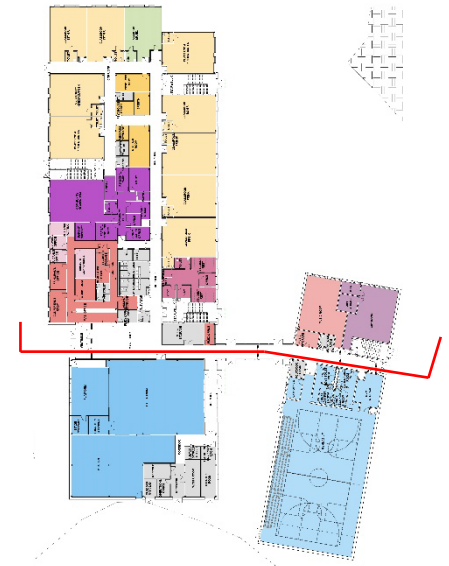




EAST WEST SECTION / CUT THROUGH BUILDING



NORTH SOUTH SECTION / CUT THROUGH BUILDING

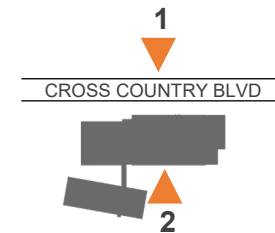




1 NORTH ELEVATION (Facing Cross Country Blvd) – MAIN ENTRY/ CLASSROOM WING



2 SOUTH ELEVATION (Facing Courtyard and Winner Ave) - CLASSROOM WING





1 EAST ELEVATION (Facing Taney Rd.)

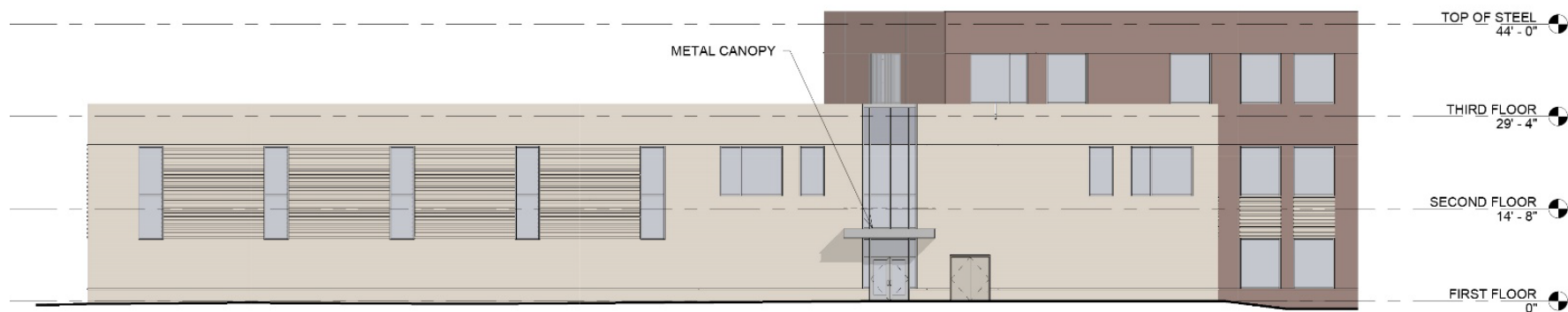


2 WEST ELEVATION (Facing Pinkney Rd.)

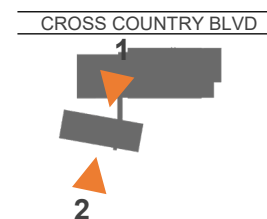




1 NORTH ELEVATION (Facing Courtyard and Cross Country Blvd.) – GYMNASIUM WING



2 SOUTH ELEVATION (Facing Winner Ave.) - GYMNASIUM WING





NORTHWEST CORNER – CROSS COUNTRY BLVD & PINKNEY RD



NORTHEAST CORNER – CROSS COUNTRY BLVD & TANEY RD



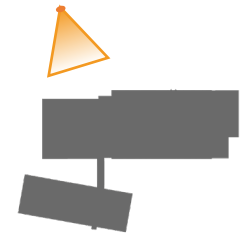
SOUTHEAST CORNER – WINNER AVE & TANEY RD



SOUTHWEST CORNER – WINNER AVE & PINKNEY RD



MAIN ENTRANCE, CROSS COUNTRY BLVD





SECONDARY ENTRANCE, WINNER AVE





EAST MAIN STREET PLAZA & PLAY AREA





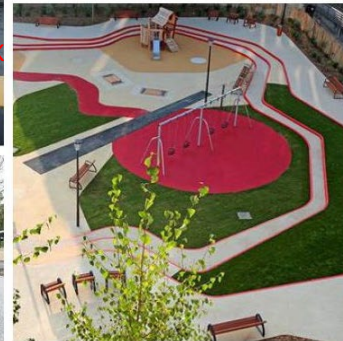
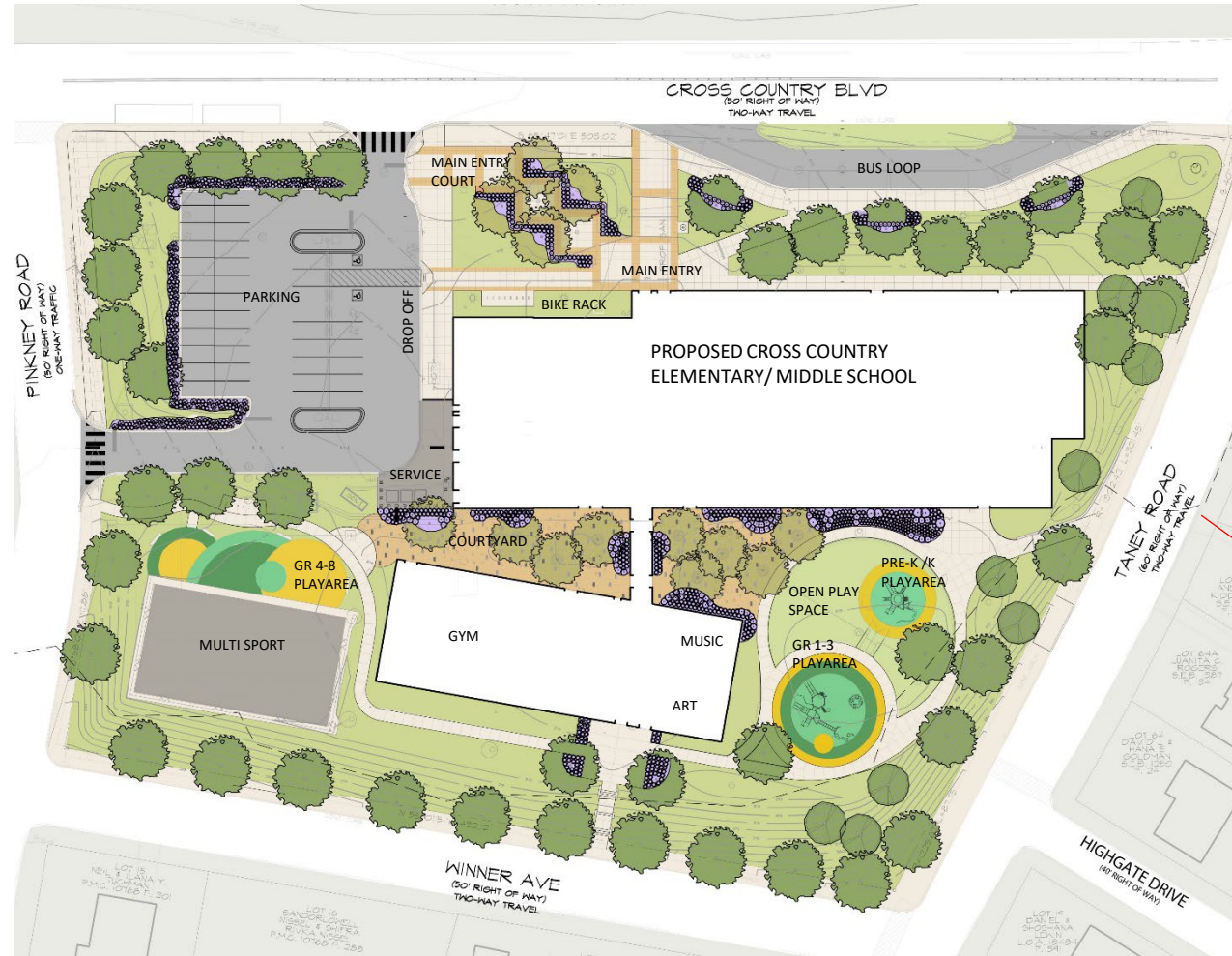
EAST MAIN STREET PLAZA

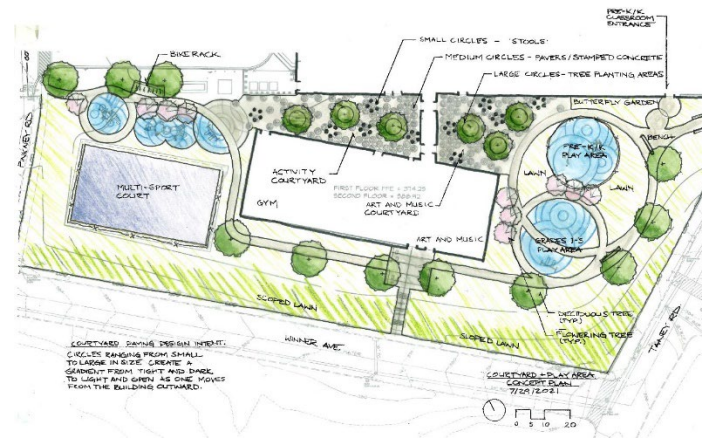




WEST MAIN STREET PLAZA & DINING FACADE









Existing Trees removed



Grass areas



New Trees



Shade Tree



Acer rubrum 'Bowhall'
Red Maple



Betula nigra 'Cully'
Heritage River Birch



Carya alba
Maidenhair Tree



Liquidambar styraciflua
Black Gum



Ulmus americana
'Jefferson'
Jefferson Elm

Ornamental Trees



Cornus florida
Flowering Dogwood



Cercis canadensis
Eastern Redbud



Hamamelis virginiana
Common Witchhazel



Clethra alnifolia
Summery Sweetgum



Ilex glabra 'Shamrock'
Shamrock Holly

Shrubs



Hydrangea serrata
Little Lace / Hydrangea

Perennials/Grasses



Asclepias tuberosa
Butterflyweed



Amsonia hubrichtii
Threadleaf Bluestar



Liatris pycnostachya
Purple Coneflower



Lobelia cardinalis
Cardinal Flower



Liatris spicata
Blazing Star



Monarda 'GardenView Scarlet'
Beg Balm



Nepeta 'Junior Walker'
Junior Walker Catmint



Panicum virgatum 'Cape Breeze'
Switchgrass

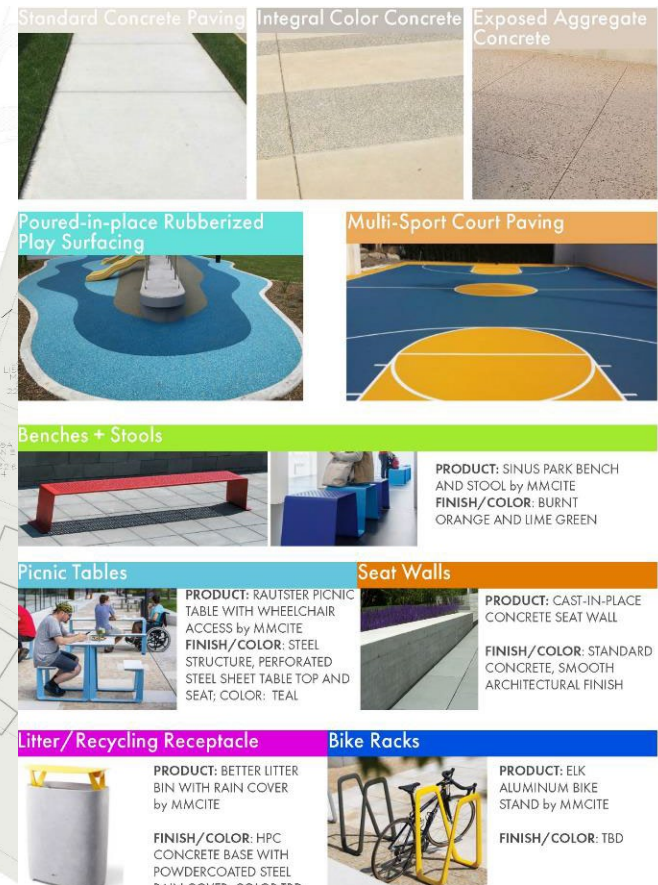


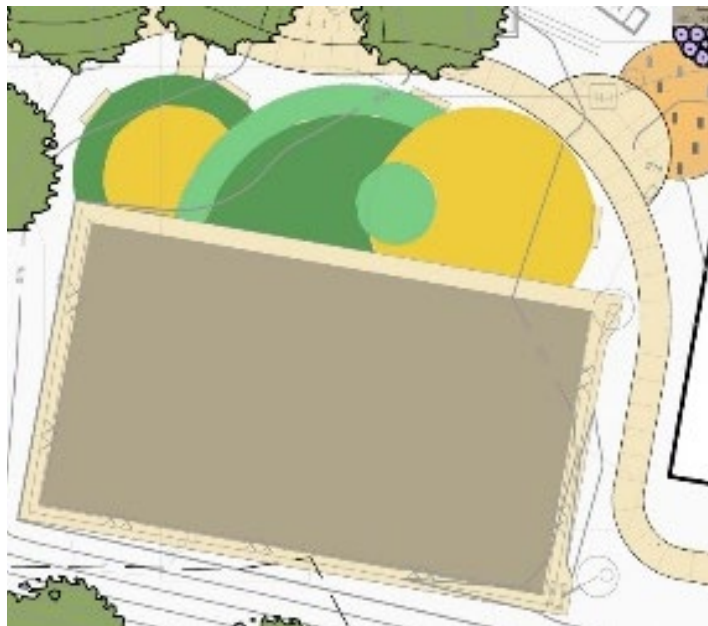
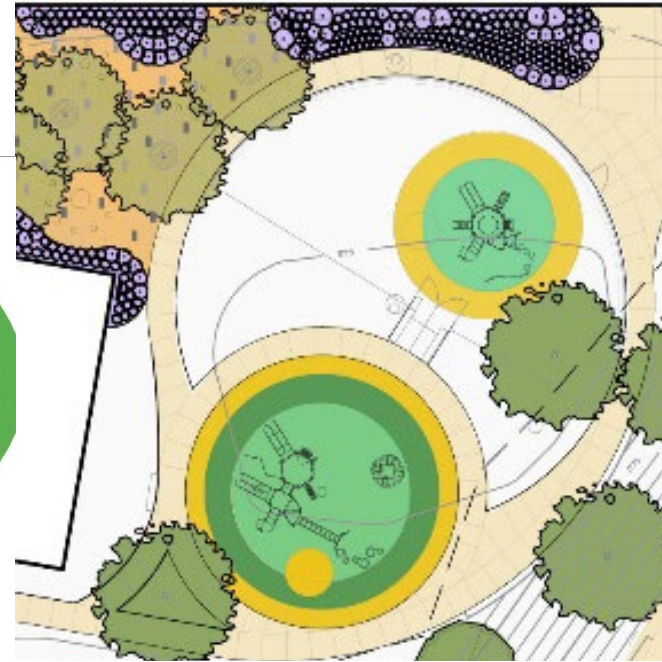
Schizachyrium scoparium
Little Bluestem



Sporobolus heterolepis
Prairie Dropseed

Lawn





Planning (6-8 Months)

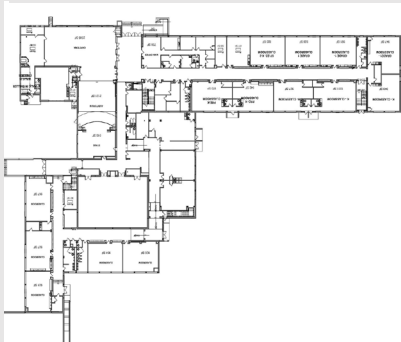
Pre-Design (2-4 Months)

Design (6-8 Months)



Building Opening Summer 2023

Concept Design
March 2021



Schematic Design
May 2021



Design Development
July 2021



Final Drawings
December 2021

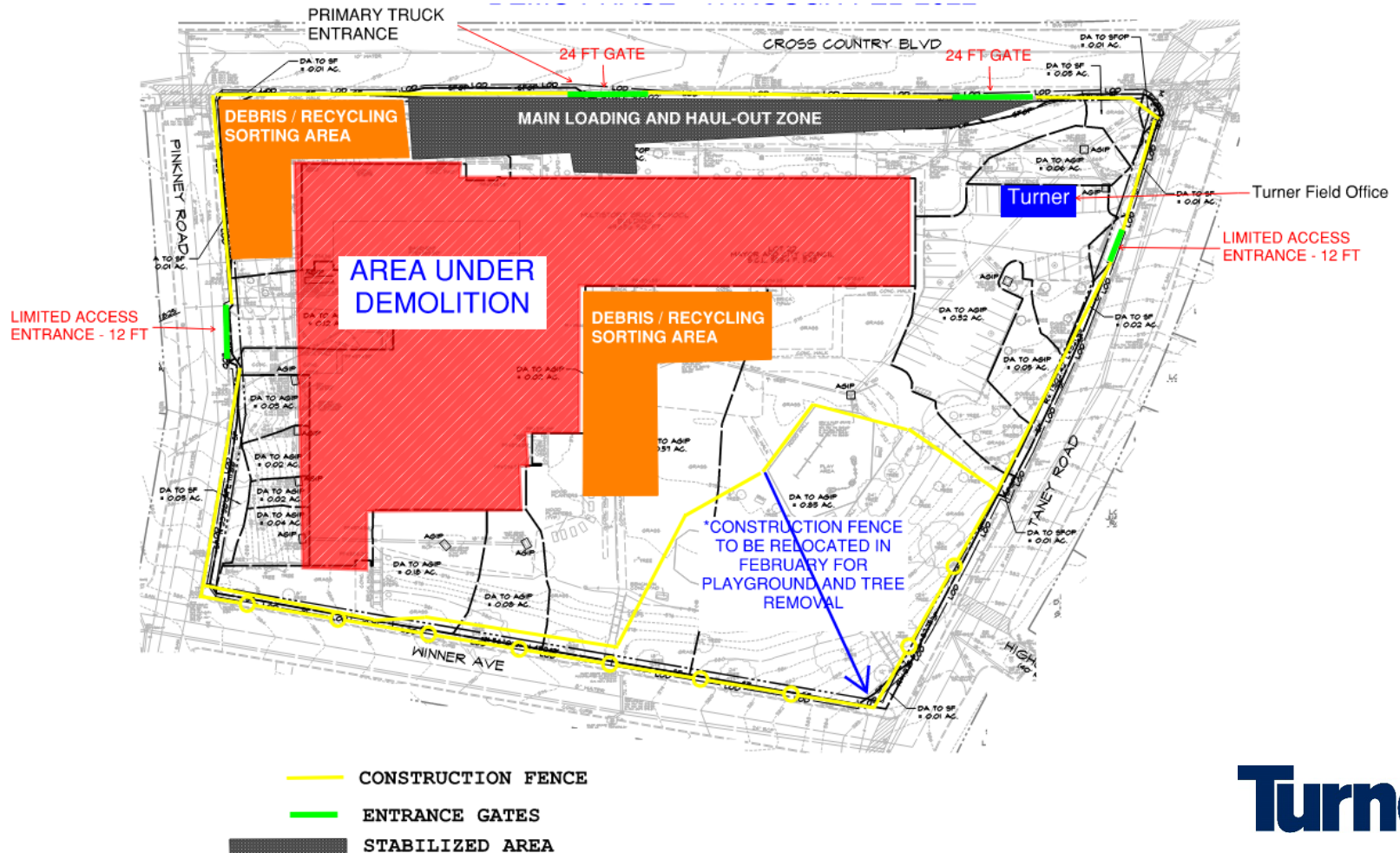


Turner

Hours of Operation:

Typical Day: 7am – 5pm

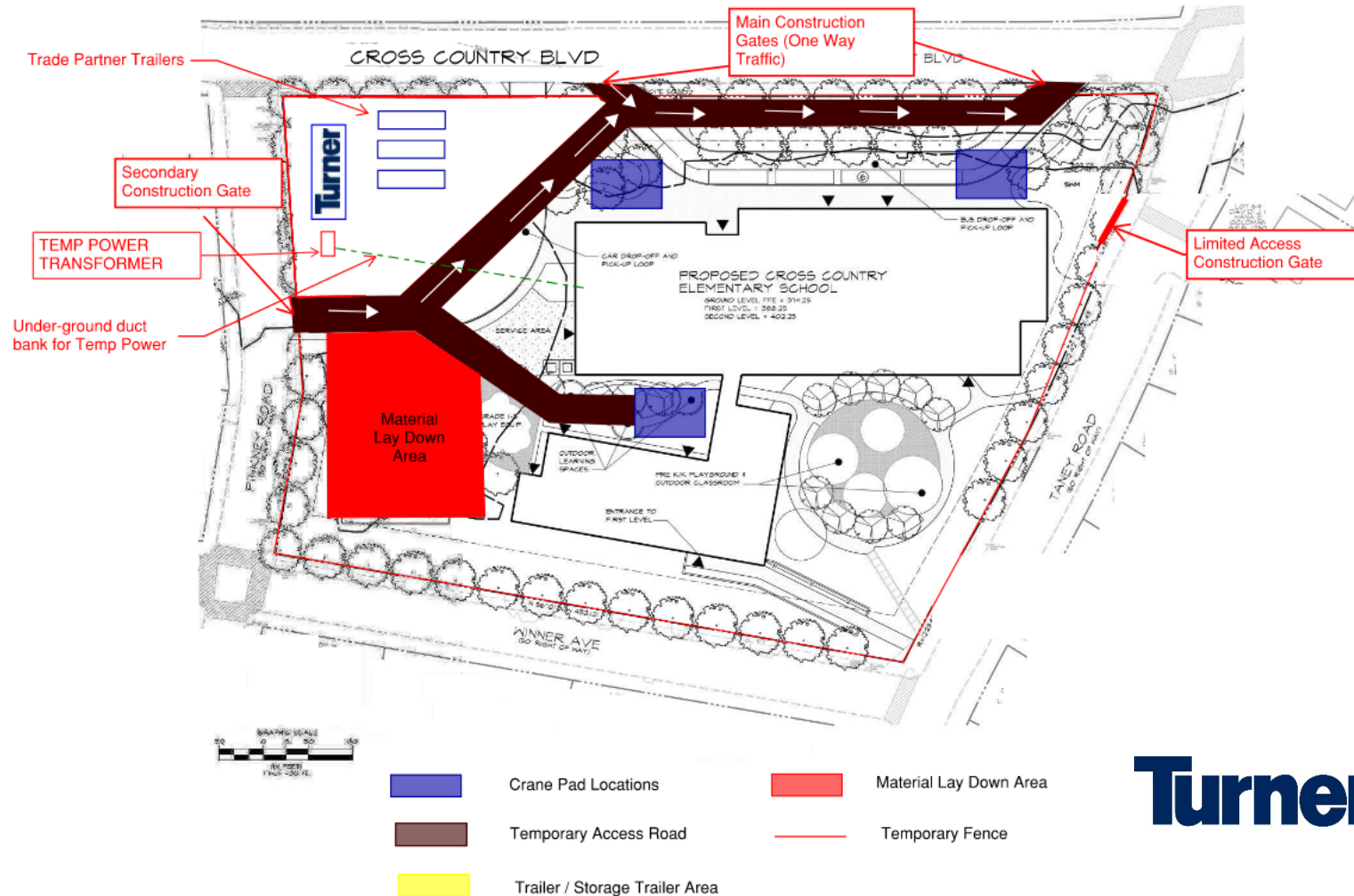
Late Day: 7am – 7pm



Hours of Operation:

Typical Day: 7am – 5pm

Late Day: 7am – 7pm

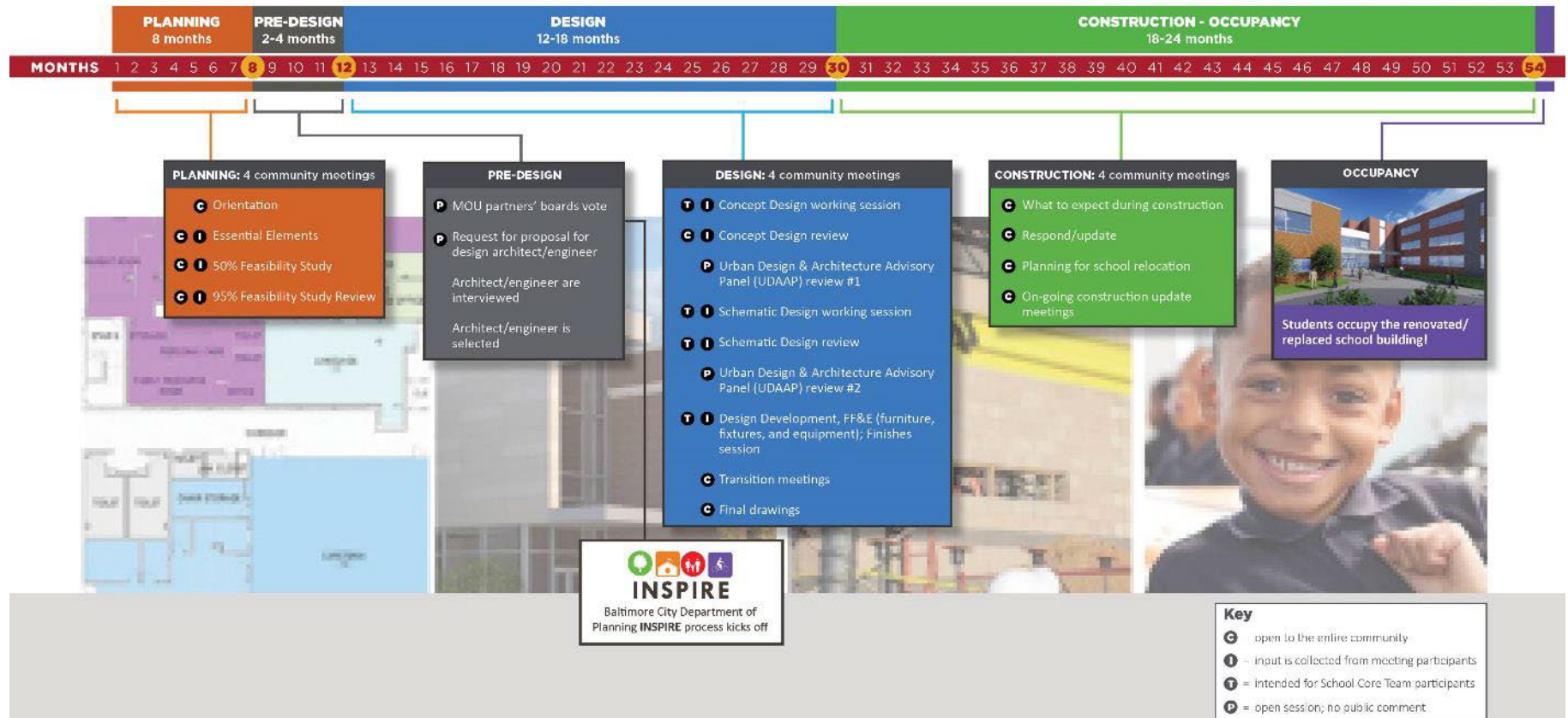




21st Century School Buildings Engagement Process

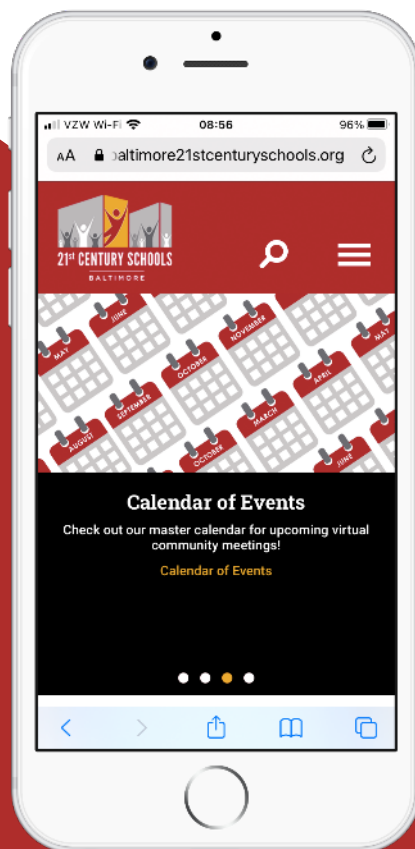
The essential role of school stakeholders in the 21st Century School Buildings process.

Each school is unique. Creating modern, high-quality learning environments that meet the needs of individual school communities and support their vision for student success is a collaborative effort. The process for the design of each school building takes 18-24 months. The process for the construction of a school takes an additional 18-24 months marked by multiple opportunities for school communities to provide input and feedback.



Updated 1/13/2020

www.baltimore21stcenturyschools.org @21stCenturySchoolBuildingProgram



Questions?

Program Contacts

Sr. Community & Public Relations Coordinator

Ivy McNeil

idmcneill01@bcps.k12.md.us

Community & Public Relations Manager

Renee Stainrod

rastainrod@bcps.k12.md.us

Program Information

21st Century School Buildings Program Office

(443) 642-4600



www.baltimore21stcenturyschools.org

21st Century School Buildings Program
Baltimore City Public Schools
200 East North Avenue Room 407-B
Baltimore MD 21202
(443) 642-4600

Michael McBride
Interim Executive Director, 21st Century Buildings Program
Baltimore City Public Schools

Gary McGuigan
Executive Vice President, Capital Development Division
Maryland Stadium Authority

Faith Leach
Interim Director, Mayor's Office of Children and Family
Success

Robert Gorrell
Executive Director, Public School Construction Program
State of Maryland

BALTIMORE CITY
PUBLIC SCHOOLS

