

21st Century School Buildings Program

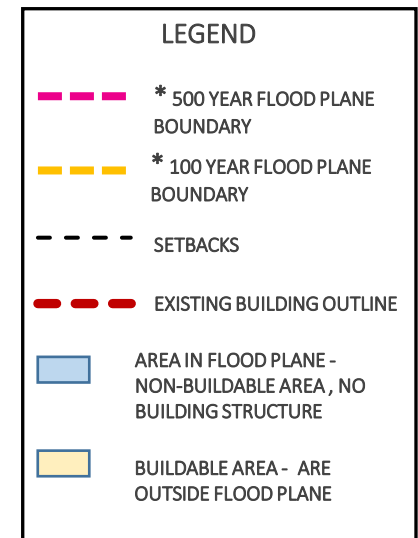
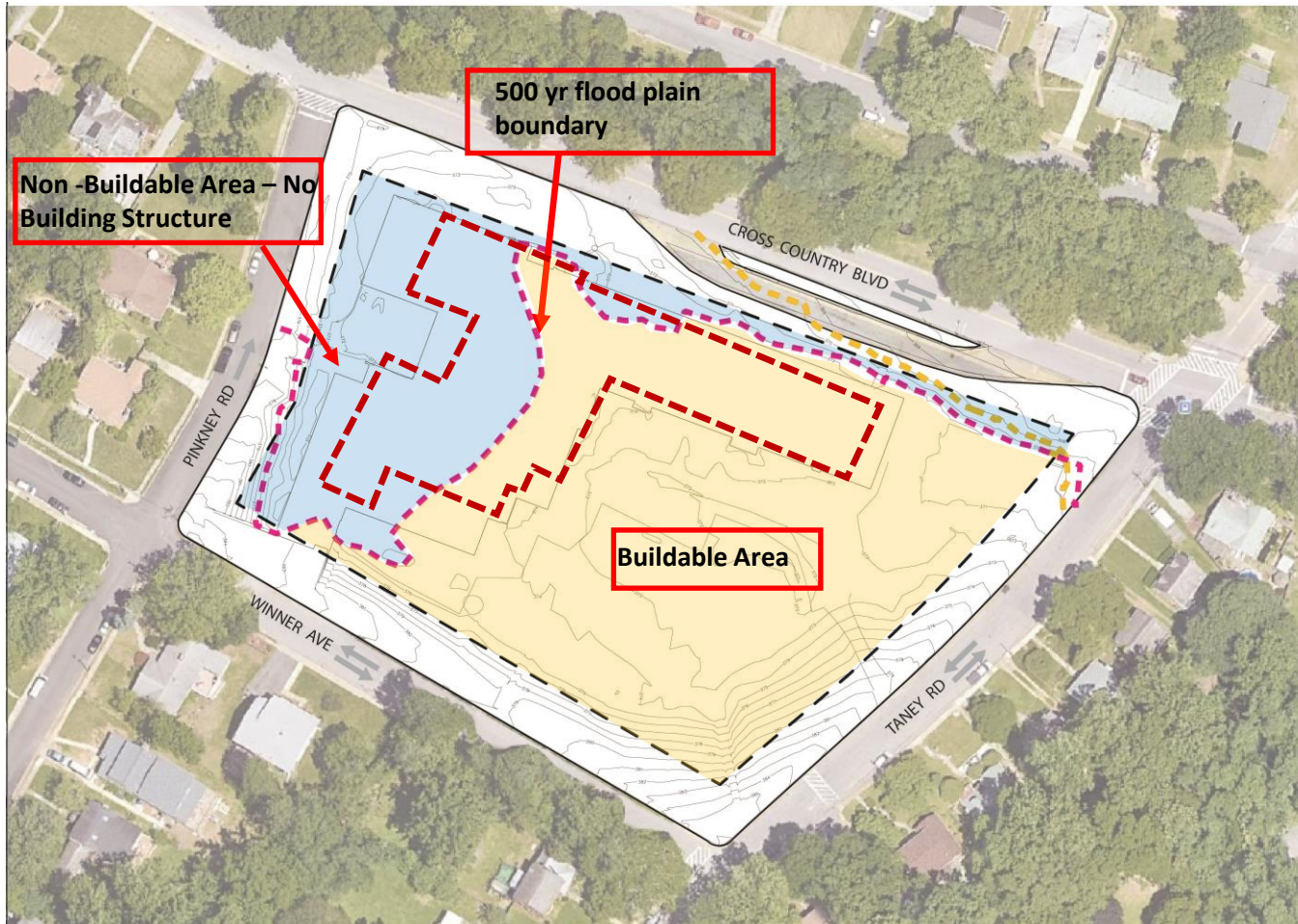
Cross Country Elementary/Middle School Replacement - Community Meeting #4
Design Development
September 9, 2021

Presenters	Agenda
<p>Renee Stainrod Manager, Community & Public Relations 21st Century School Buildings Program</p> <p>Ivy McNeill Sr. Program Coordinator, Community & Engagement 21st Century School Buildings Program</p> <p>Miriam Carrion Spanish Translator Hispanic Advocate</p> <p>Michael McBride Director of Design 21st Century School Buildings Program</p> <p>Catherine Acker Project Manager MSA</p> <p>Priya Iyer Project Architect Colimore Architects, an ATI Company</p>	<ul style="list-style-type: none"> • Introduction • Revised Project Schedule • Flood Plain Boundaries • Design Development Phase Review • Duration of Design Phase • Project Schedule • Community Meeting Info • Questions

Project Schedule

Date	Action
Oct. 2019	Design paused due to discovery of FEMA re-mapping the area from a 100 to 500-year flood plain
Nov 2020 – Oct. 2020	Coordination with City Inter-Agencies/FEMA/AE team for site investigations and design options
Nov.2020	Justification reviewed by the City School Board of Commissioners as a Replacement vs Renovation/Addition
Dec. 2019	Approved by the MOU partners at quarterly meeting
Jan. 2021	Educational Specifications revised
Jan.2021 – Dec. 2021	Design
Oct. 2021	Demolition/Abatement
Feb. 2022– Summer 2023	Construction
Sept. 2023	Occupancy

Flood Plain Boundaries





Phase I – Demolition of the Existing School

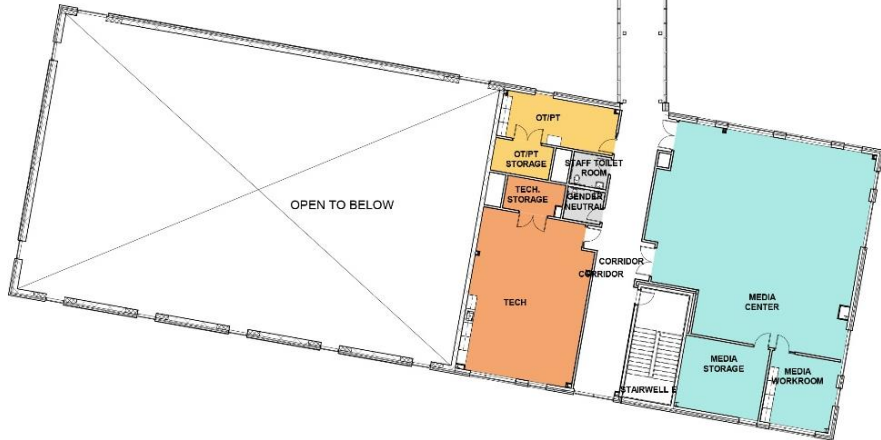
Phase II – Construction of the Replacement Building





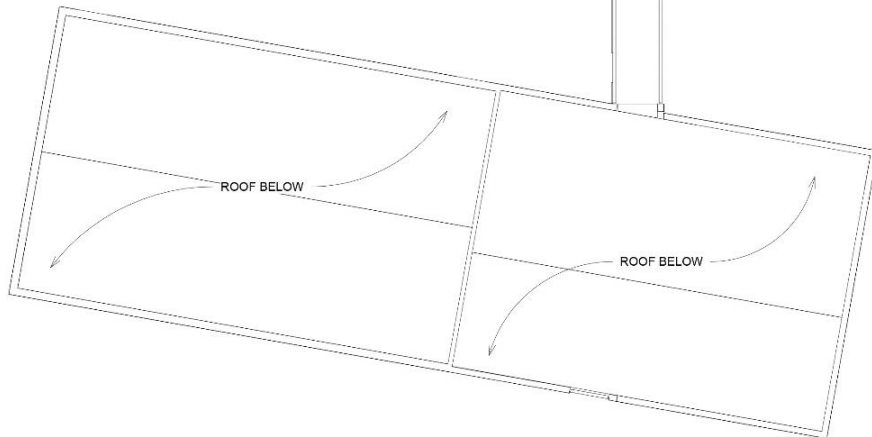


LEGEND	
ADMINISTRATION	
BUILDING SERVICES	
CIRCULATION	
COMMUNITY SPACE	
FOOD SERVICES	
GUIDANCE SUITE	
HEALTH SUITE	
MEDIA CENTER	
MUSIC	
PHYSICAL EDUCATION	
SCIENCES	
SPECIAL EDUCATION	
SUPPORT/COLLABORATION SPACES	
TEACHING/LEARNING SPACES	
TECHNOLOGY EDUCATION	
VISUAL ARTS	
TOTAL BUILDING GSF	95,105 GSF
BUILDING VOLUME	
GROSS BUILDING AREA	
GROUND FLOOR	47,040 GSF
FIRST FLOOR	28,459 GSF
SECOND FLOOR	19,606 GSF
TOTAL BUILDING GSF	95,105 GSF
BUILDING VOLUME	



LEGEND	
ADMINISTRATION	
BUILDING SERVICES	
CIRCULATION	
COMMUNITY SPACE	
FOOD SERVICES	
GUIDANCE SUITE	
HEALTH SUITE	
MEDIA CENTER	
MUSIC	
PHYSICAL EDUCATION	
SCIENCES	
SPECIAL EDUCATION	
SUPPORT/COLLABORATION SPACES	
TEACHING/LEARNING SPACES	
TECHNOLOGY EDUCATION	
VISUAL ARTS	
TOTAL BUILDING GSF	95,105 GSF
BUILDING VOLUME	
GROSS BUILDING AREA	
GROUND FLOOR	47,040 GSF
FIRST FLOOR	28,459 GSF
SECOND FLOOR	19,606 GSF
TOTAL BUILDING GSF	95,105 GSF
BUILDING VOLUME	





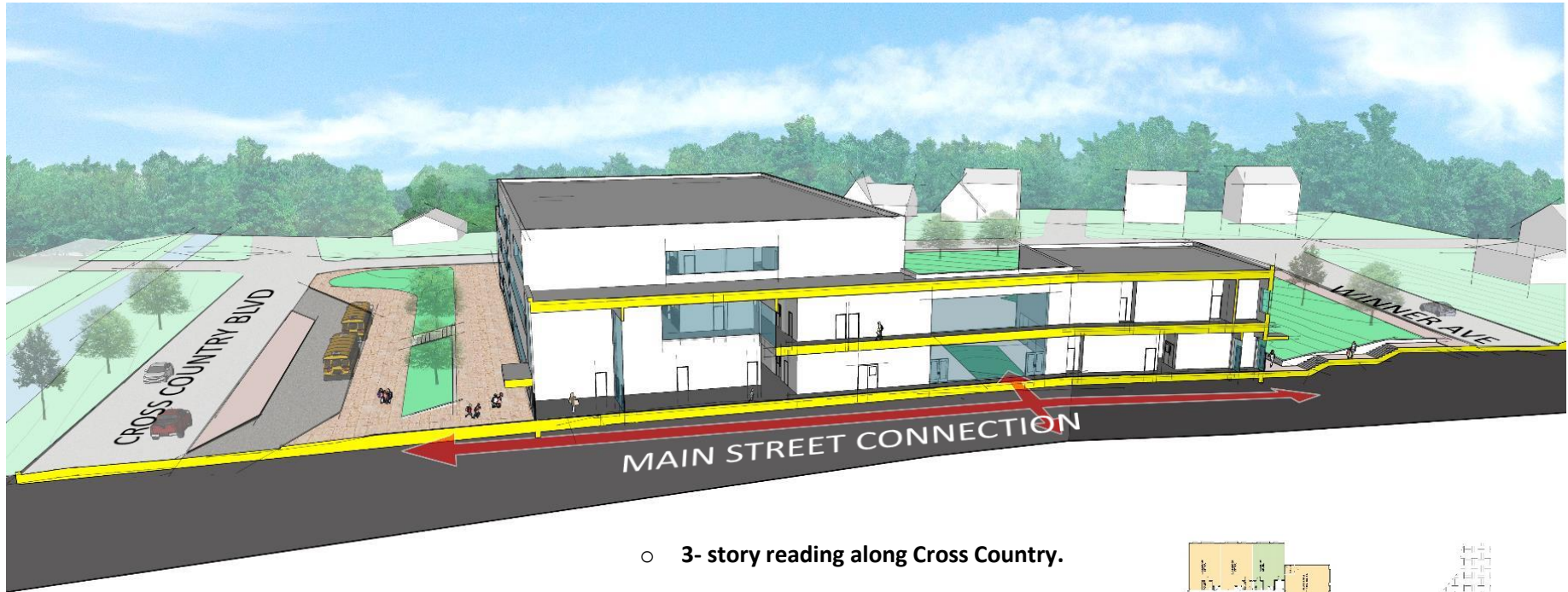
LEGEND	
ADMINISTRATION	
BUILDING SERVICES	
CIRCULATION	
COMMUNITY SPACE	
FOOD SERVICES	
GUIDANCE SUITE	
HEALTH SUITE	
MEDIA CENTER	
MUSIC	
PHYSICAL EDUCATION	
SCIENCES	
SPECIAL EDUCATION	
SUPPORT/COLLABORATION SPACES	
TEACHING/LEARNING SPACES	
TECHNOLOGY EDUCATION	
VISUAL ARTS	
TOTAL BUILDING GSF	95,105 GSF
BUILDING VOLUME	
GROSS BUILDING AREA	
GROUND FLOOR	47,040 GSF
FIRST FLOOR	28,459 GSF
SECOND FLOOR	19,606 GSF
TOTAL BUILDING GSF	95,105 GSF
BUILDING VOLUME	





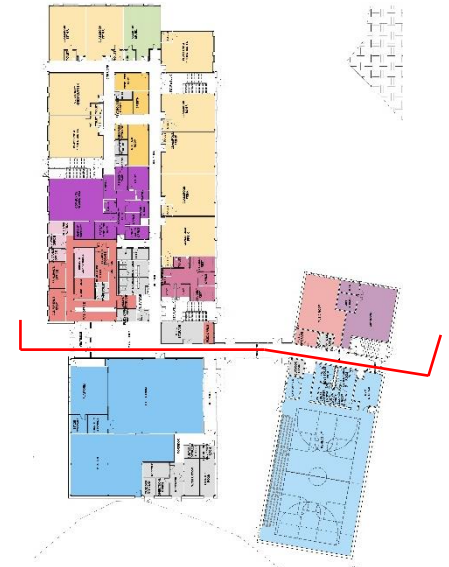
- **Strong entry statement from Cross Country.**
- **Volumes step down towards Taney and Pinkney Rds.**

EAST WEST SECTION / CUT THROUGH BUILDING



- 3- story reading along Cross Country.
- 'Main Street' as an organizing element connects north and south volumes and east and west courtyards.
- Integrated outdoor learning courtyards with visible and accessible from 'Main Street'.

NORTH SOUTH SECTION / CUT THROUGH BUILDING

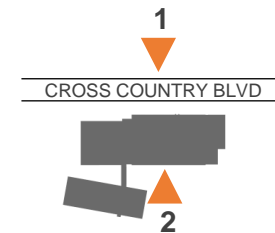




1 CLASSROOM WING – NORTH ELEVATION



2 CLASSROOM WING – SOUTH ELEVATION





1 EAST ELEVATION

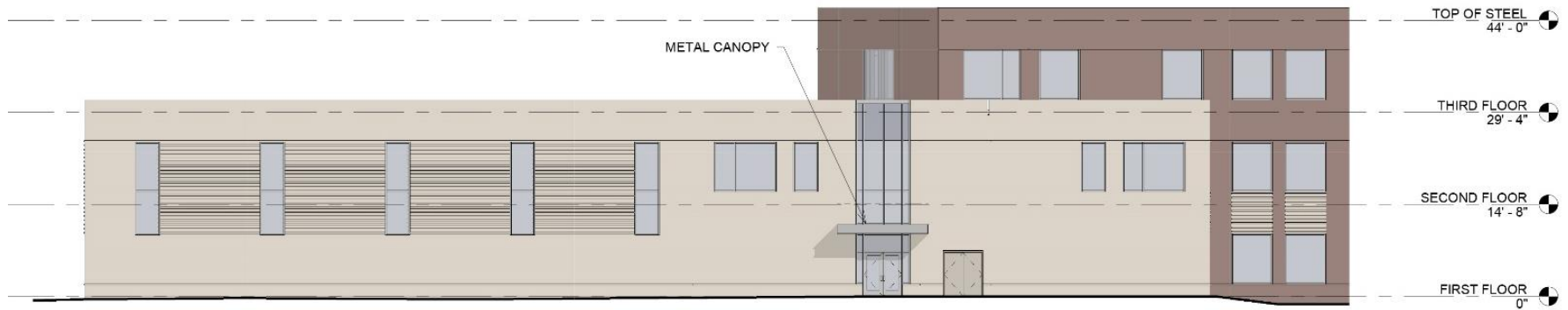


2 WEST ELEVATION

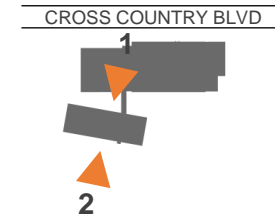




1 CLASSROOM WING – NORTH ELEVATION



2 CLASSROOM WING – SOUTH ELEVATION





NORTHWEST CORNER – CROSS COUNTRY BLVD & PINKNEY RD



NORTHEAST CORNER – CROSS COUNTRY BLVD & TANEY RD



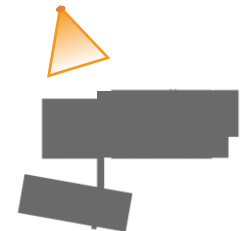
SOUTHEAST CORNER – WINNER AVE & TANEY RD



SOUTHWEST CORNER – WINNER AVE & PINKNEY RD

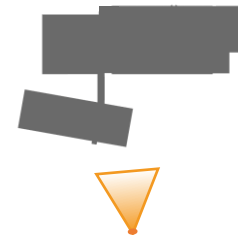


MAIN ENTRANCE, CROSS COUNTRY BLVD





SECONDARY ENTRANCE, WINNER AVE





EAST MAIN STREET PLAZA & PLAY AREA





EAST MAIN STREET PLAZA

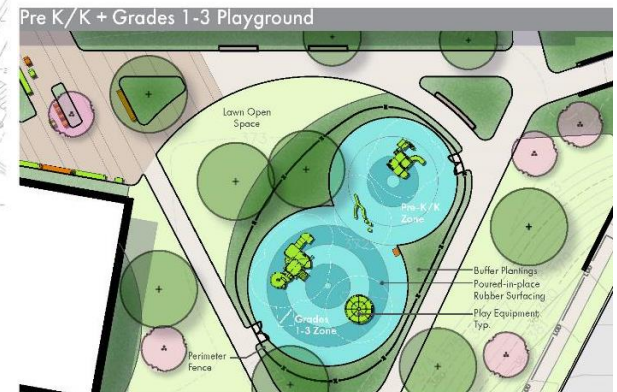
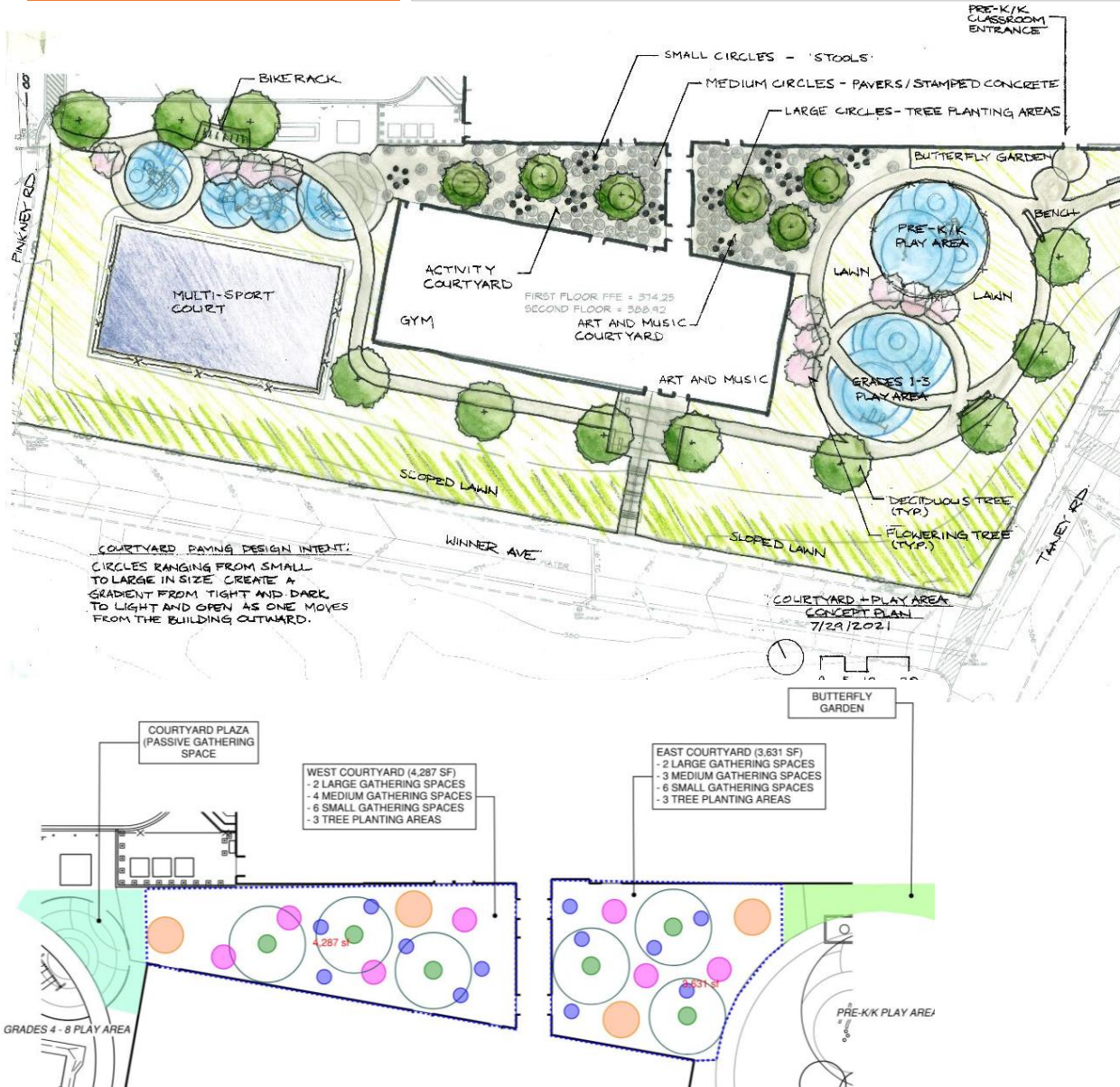




WEST MAIN STREET PLAZA & DINING FACADE







Planning

Landscape Design - Site Plantings + Paving + Furnishing

Proposed Play Equipment



Grades 1-2



Grades 1-3

Standard Concrete Paving



Integral Color Concrete



Exposed Aggregate Concrete



Poured-in-place Rubberized Play Surfacing



Multi-Sport Court Paving



Shade Tree



Acer rubrum 'Bowhall'
Red Maple



Betula nigra 'Cully'
Piedmont Silver Birch



Chrysothamnus
Maidenhair Tree



Quercus sp.
White Oak



Ulmus americana
Jefferson Elm

Ornamental Trees



Cotinus cogkyne
Flowering Dogwood



Cercis canadensis
Eastern Redbud



Hamamelis virginiana
Common Witchhazel

Shrubs



Cornus alternifolia
Summersweet



Juniperus horizontalis
Shamrock Shrub



Hydrangea
Little Lime / Hydrangea

Perennials/Grasses



Asclepias tuberosa
Butterflyweed



Amorpha canescens
Threelobed Bluestar



Coreopsis purpurea
Purple Coneflower



Salvia caroliniana
Carroll's Flower



Liatris pycnostachya
Blazing Star



Monarda
Garden Phlox



Asperula
Juniper Walker



Parthenocissus
Cape Breton / Switchgrass



Schizanthus luteus
Little Bluestem



Sporobolus heteroclades
Prairie Dropseed

Lawn

Benches + Stools



PRODUCT: SINUS PARK BENCH
AND STOOL by MMCITE
FINISH/COLOR: BURNT
ORANGE AND LIME GREEN

Picnic Tables



PRODUCT: RAUTSTER PICNIC
TABLE WITH WHEELCHAIR
ACCESS by MMCITE
FINISH/COLOR: STEEL
STRUCTURE, PERFORATED
STEEL SHEET TABLE TOP AND
SEAT; COLOR: TEAL

Seat Walls



PRODUCT: CAST-IN-PLACE
CONCRETE SEAT WALL
FINISH/COLOR: STANDARD
CONCRETE, SMOOTH
ARCHITECTURAL FINISH

Litter/Recycling Receptacle



PRODUCT: BETTER LITTER
BIN WITH RAIN COVER
by MMCITE

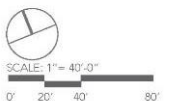
FINISH/COLOR: HPC
CONCRETE BASE WITH
POWDERCOATED STEEL
RAIN COVER. COLOR TBD

Bike Racks



PRODUCT: ELK
ALUMINUM BIKE
STAND by MMCITE

FINISH/COLOR: TBD



Planning (6-8 Months)

Pre-Design (2-4 Months)

Design (6-8 Months)



Building Opening Summer 2023

Concept Design
March 2021



Schematic Design
May 2021



Design Development
July 2021



Final Drawings
December 2021

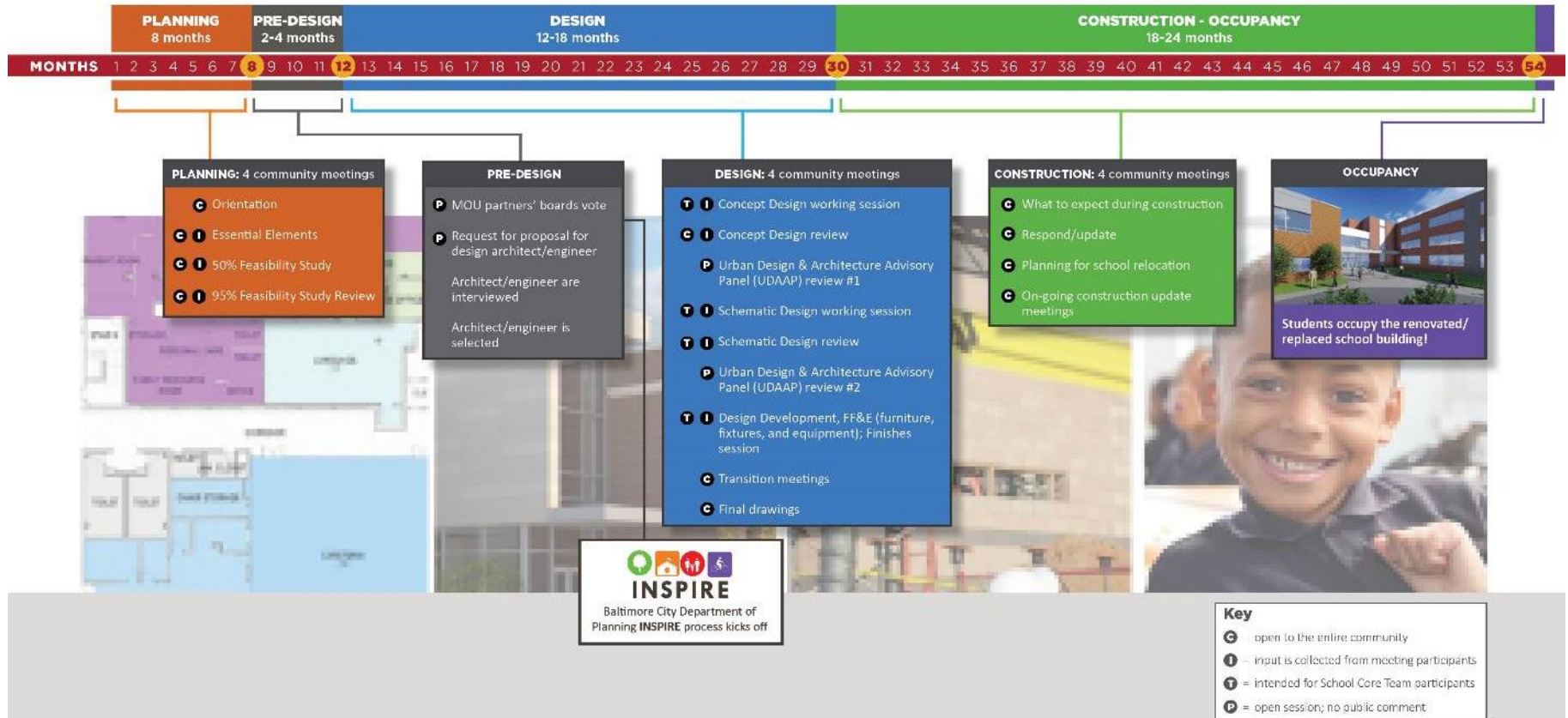




21st Century School Buildings Engagement Process

The essential role of school stakeholders in the 21st Century School Buildings process.

Each school is unique. Creating modern, high-quality learning environments that meet the needs of individual school communities and support their vision for student success is a collaborative effort. The process for the design of each school building takes 18-24 months. The process for the construction of a school takes an additional 18-24 months marked by multiple opportunities for school communities to provide input and feedback.



Updated 1/13/2020

www.baltimore21stcenturyschools.org @21stCenturySchoolBuildingProgram



Questions?

Program Contacts

Sr. Community & Public Relations Coordinator

Ivy McNeil

idmcneill01@bcps.k12.md.us

Community & Public Relations Manager

Renee Stainrod

rastainrod@bcps.k12.md.us

Program Information

21st Century School Buildings Program Office

(443) 642-4600



www.baltimore21stcenturyschools.org

21st Century School Buildings Program

Baltimore City Public Schools

200 East North Avenue Room 407-B

Baltimore MD 21202

(443) 642-4600

Dorothy Hellman

Executive Director, 21st Century Buildings Program

Baltimore City Public Schools

Gary McGuigan

Executive Vice President, Capital Development Division

Maryland Stadium Authority

Tisha Edwards

Mayor's Health, Human Services, Education and Youth

City of Baltimore – Office of Children and Family Success

Robert Gorrell

Executive Director, Public School Construction Program

State of Maryland

BALTIMORE CITY
PUBLIC SCHOOLS



Thank You.

This presentation was brought to you by the 21st Century School Buildings Program.