



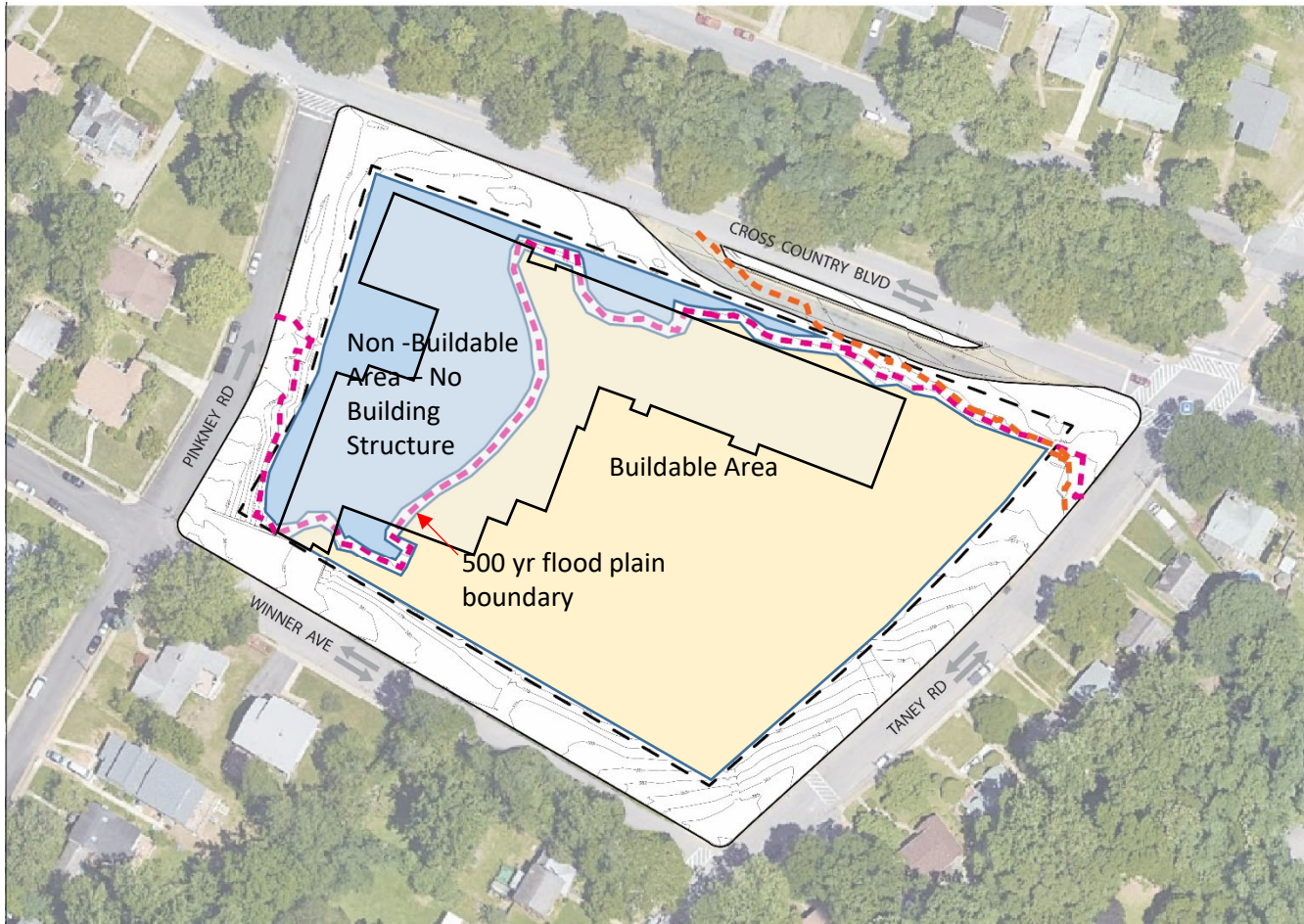
21st Century School Buildings Program
Cross Country Elementary/Middle School Replacement - Community Meeting Concept Design
February 23, 2021

Presenters	Agenda
<p>Renee Stainrod Manager, Community & Public Relations 21st Century School Buildings Program</p> <p>Ivy McNeill Sr. Program Coordinator, Community & Engagement 21st Century School Buildings Program</p> <p>Miriam Carrion Spanish Translator Hispanic Advocate</p> <p>Michael McBride Director of Design 21st Century School Buildings Program</p> <p>Catherine Acker Project Manager MSA</p> <p>Priya Iyer, Ash Belgi, Healtehr Hylinski Bakhsh & Andrew Jinks Project Architects Colimore Architects an ATI Company</p>	<ul style="list-style-type: none"> • Introduction • Revised Project Schedule • Flood Plain Boundaries • Conceptual Design Review • Duration of Design Phase • Design Schedule • Community Meeting Info • Questions

Revised Project Schedule

October 2019	Remapping of the existing 100 and 500- year flood plain boundaries by FEMA, to be completed in 2021, affected the design of the building. Design paused to reassess.
Nov – October 2020	Coordination with City Inter-Agencies/ FEMA/ AE team for site investigations and design options
November 2020	Justification reviewed by the City School Board of Commissioners as a Replacement vs Renovation/ Addition
December 2020	Approved by the MOU partners at quarterly meeting
January 2021	Educational Specifications revised
Jan – Sept 2021	Design
October 2021- January 2022	Demolition/ Abatement
Spring 2022 – Summer 2023	Replacement Building Construction
September 2023	Occupancy

Flood Plain Boundaries



Cross Country Elementary/Middle School Replacement
Concept Design Meeting February 23, 2021

What We Heard...



Existing Bus Loop to remain.

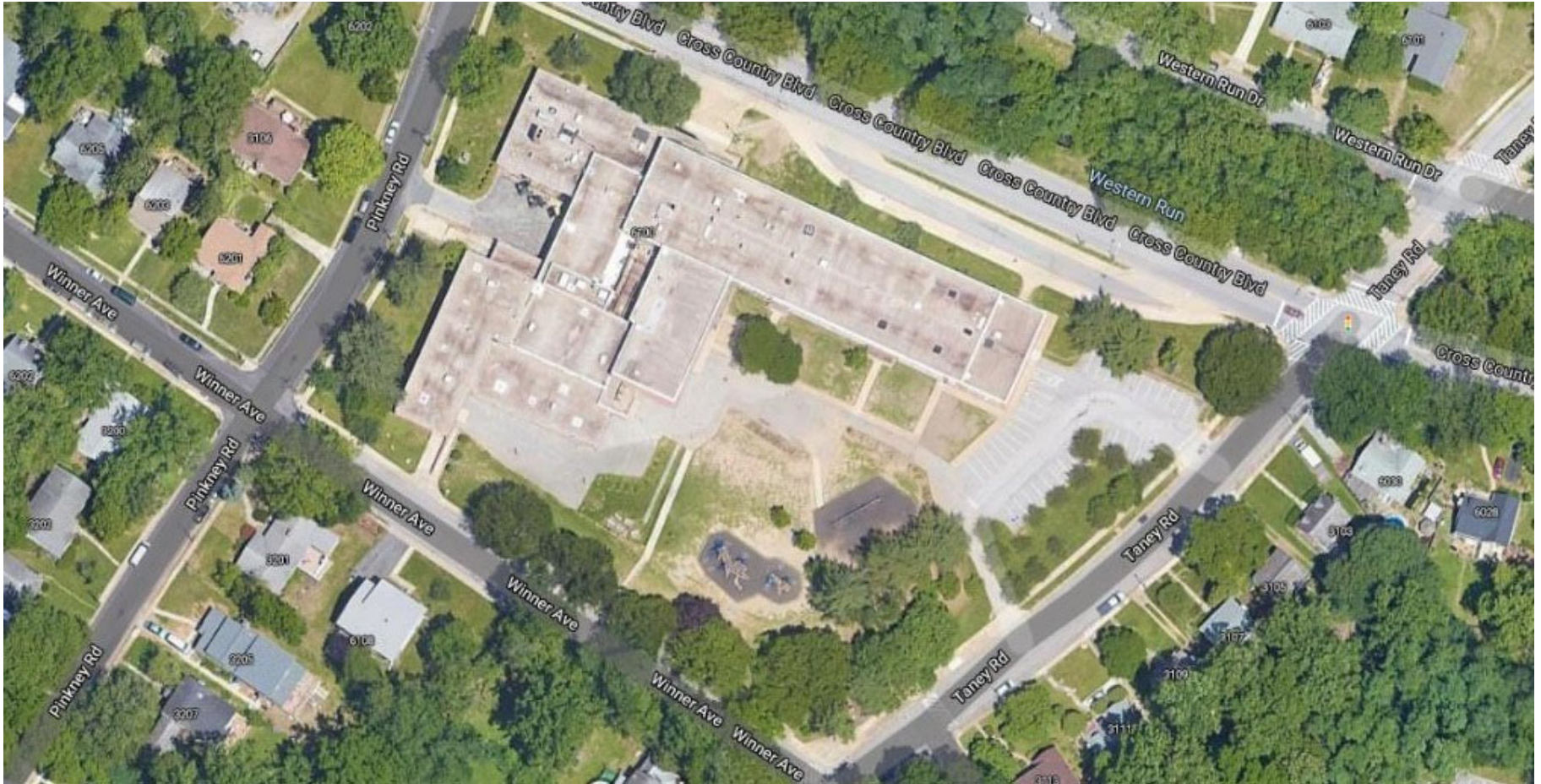
The outdoor play spaces will be located to work with the building layout, be confined to the interior of the site wherever possible, be safe places to play and limit disturbance to the immediate neighbors.

Building shall remain out of the 500 -year flood plain. An area that will flood in a 500-year flood event. **This will require the building to be increased from 2 to 3-stories.**

Increase on-site parking if possible.

Cross Country Summary of Spaces

(6) Classrooms for Pre-K and Kindergarten	(1) Music Room
(6) Classrooms for 1 st and 2 nd Grades	(1) Art Room
(9) Classrooms for 3 rd , 4 th and 5 th Grades	Media Center
(3) Classrooms for 6 th , 7 th , and 8 th Grades	Cafeteria with Stage
(3) Special Education	Gymnasium
(2) Collaboration Learning Areas	Community Space
(1) Elementary Science Lab	Administrative/ Student Services
(2) Middle Science Lab	

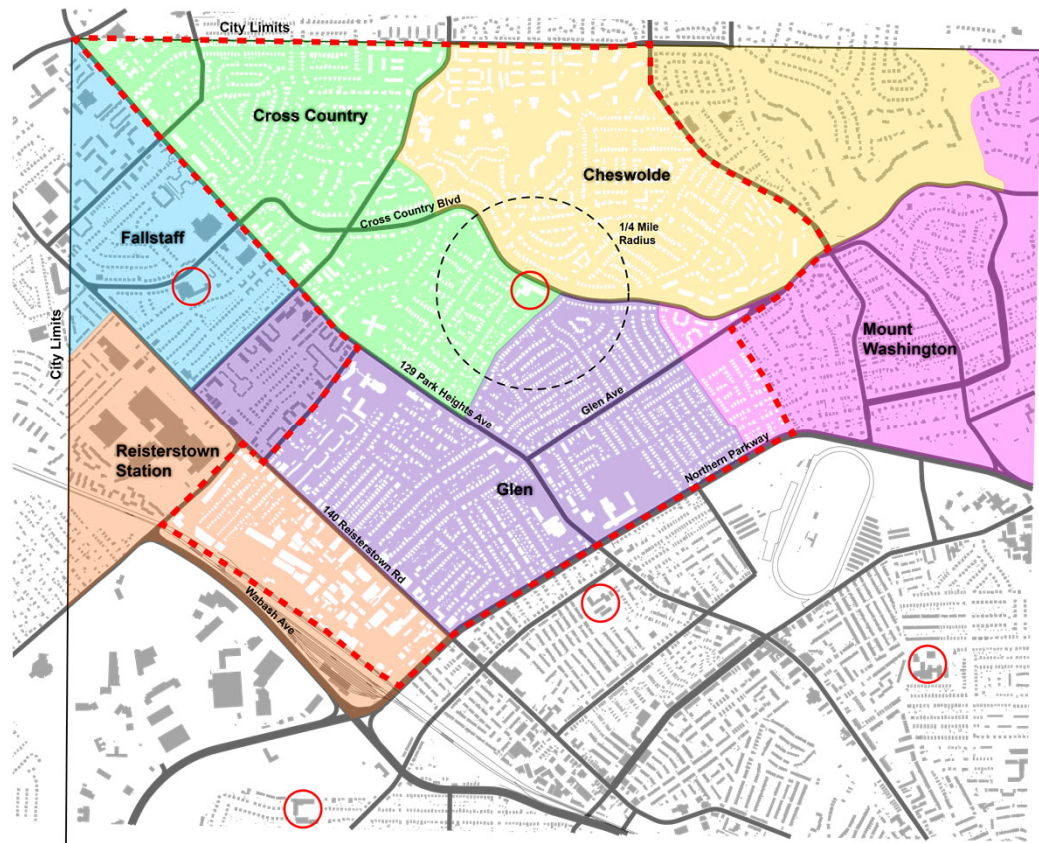
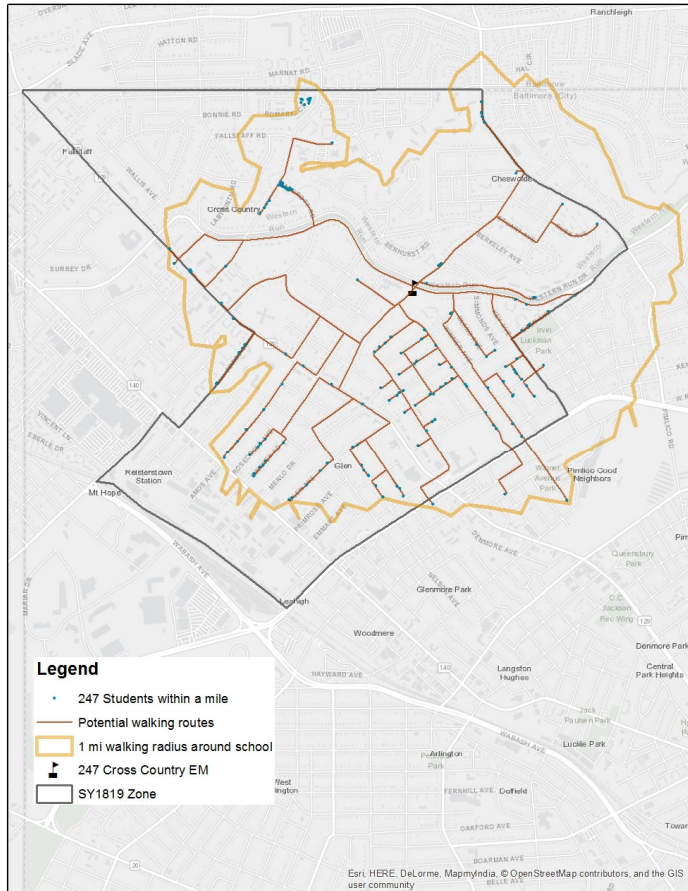


Phase I – Demolition the Existing School





Cross Country Elementary/Middle School Replacement
Concept Design Meeting February 23, 2021









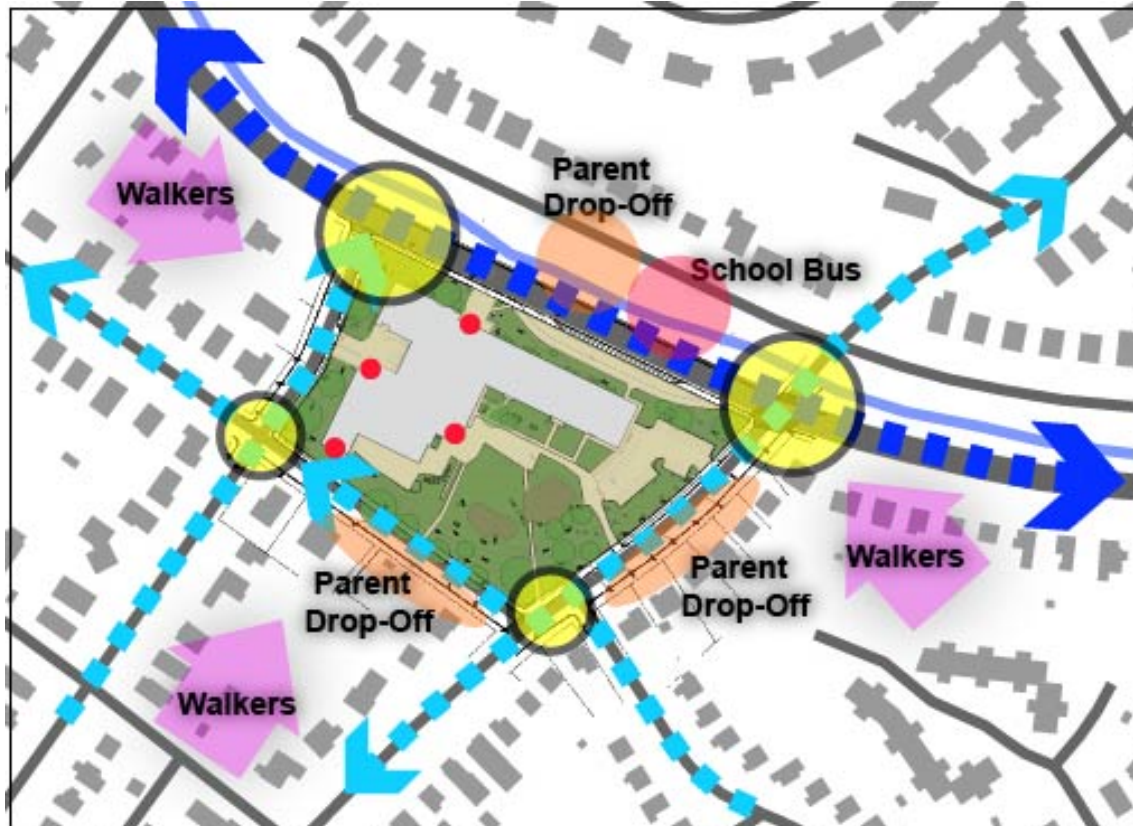
- Mount Washington
- Cheswolde
- Fallstaff
- Glen
- Cross Country
- Reisterstown Station



¼ Mile Walking Radius



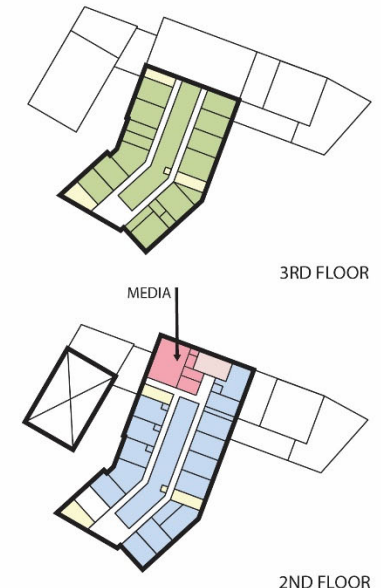
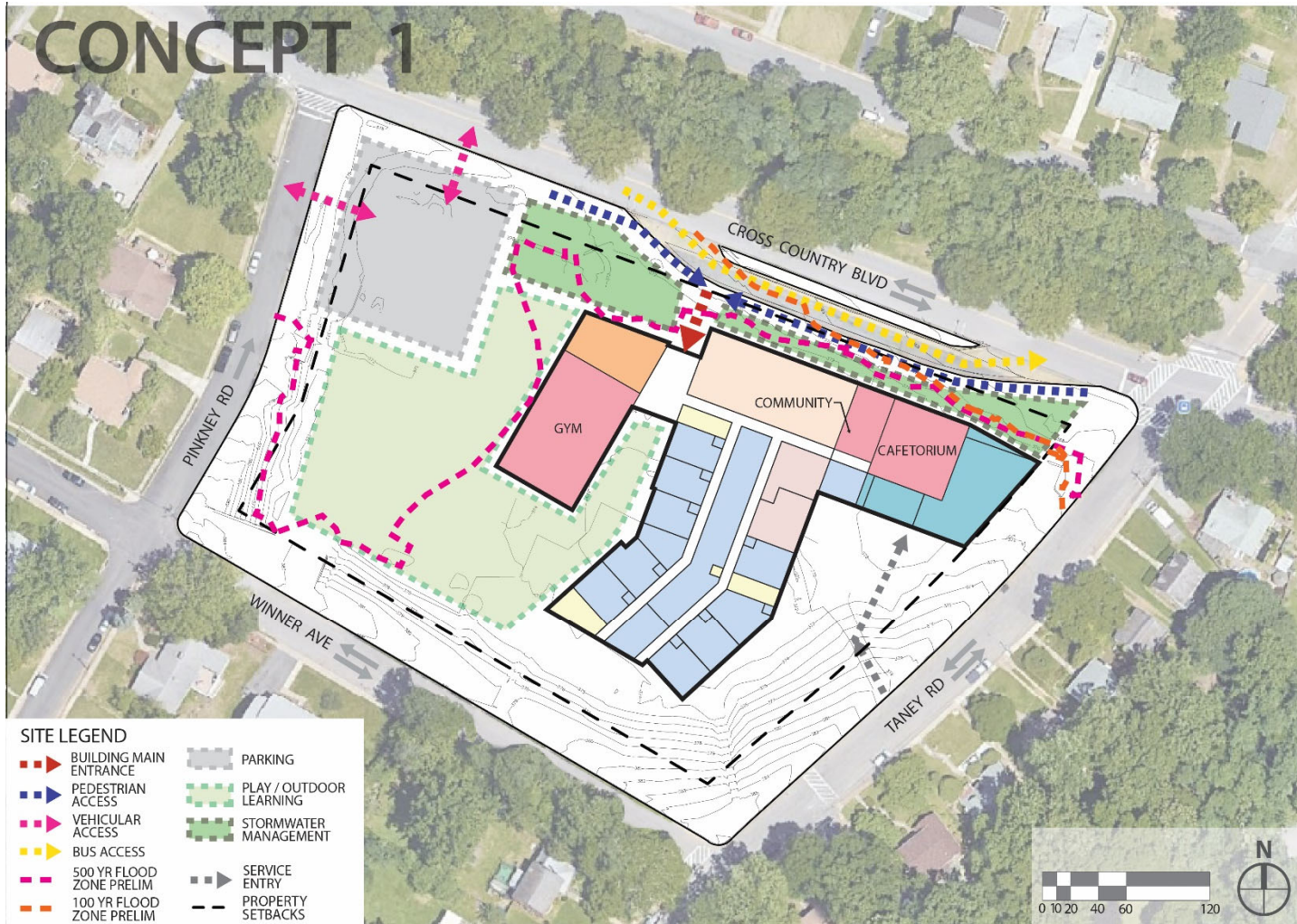
-  PEDESTRIAN CIRCULATION
-  MINOR VEHICULAR CIRCULATION
-  MAJOR VEHICULAR CIRCULATION
-  SCHOOL ADJACENT INTERSECTIONS
-  SCHOOL ENTRANCES
-  MTA BUS STOPS



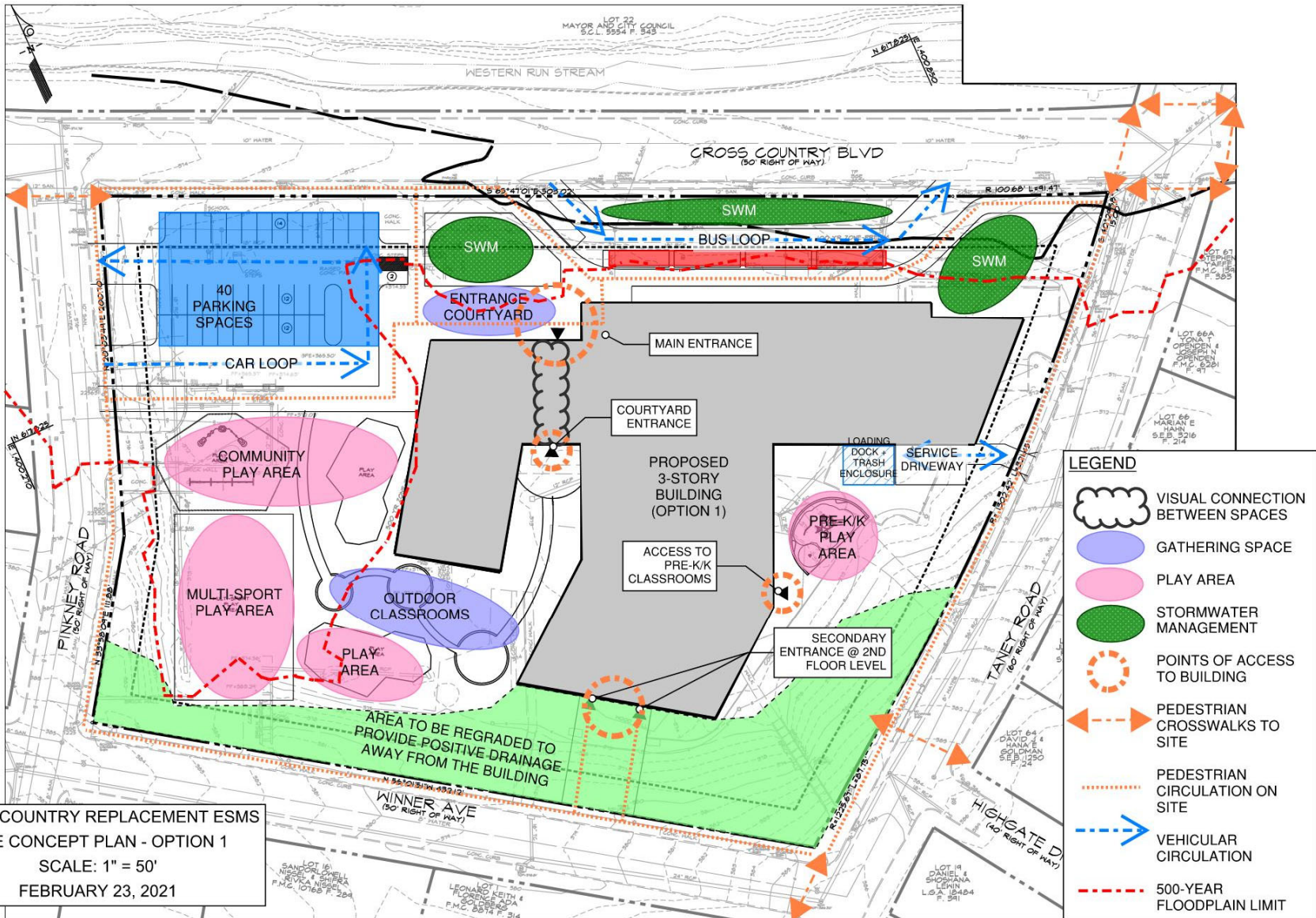


Cross Country Elementary/Middle School Replacement
Concept Design Meeting February 23, 2021



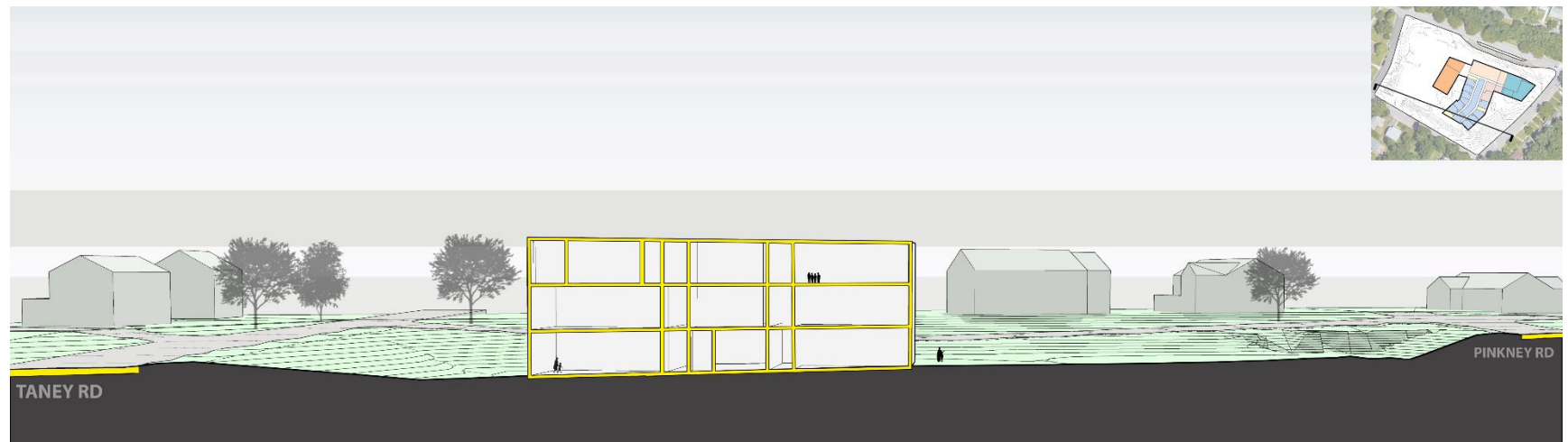
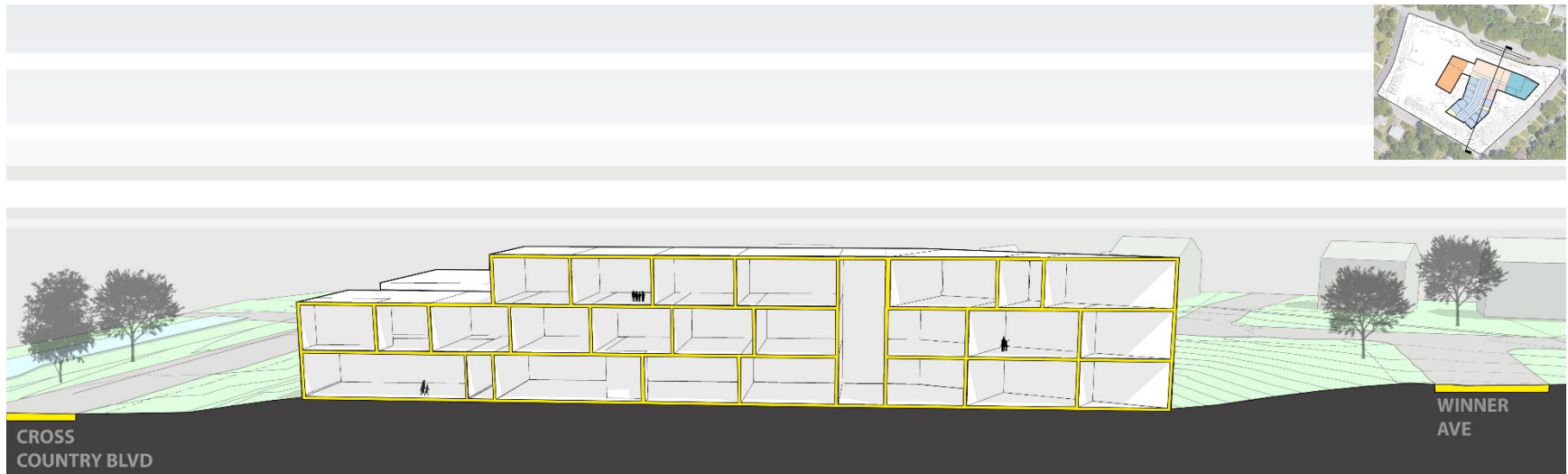


- SCHOOL PROGRAM LEGEND**
- FINE ARTS (MUSIC, ART, TECH)
 - VERTICAL CIRCULATION
 - LOCKER ROOMS, SUPPLEMENTARY GYM SPACE
 - PUBLIC ACCESSIBLE SPACE
 - KITCHEN, BOH
 - TEACHING, LEARNING (1st FLR: PreK-1, 2nd FLR: 2-5)
 - TEACHING, LEARNING (6-8)
 - ADMIN, GUIDANCE, HEALTH

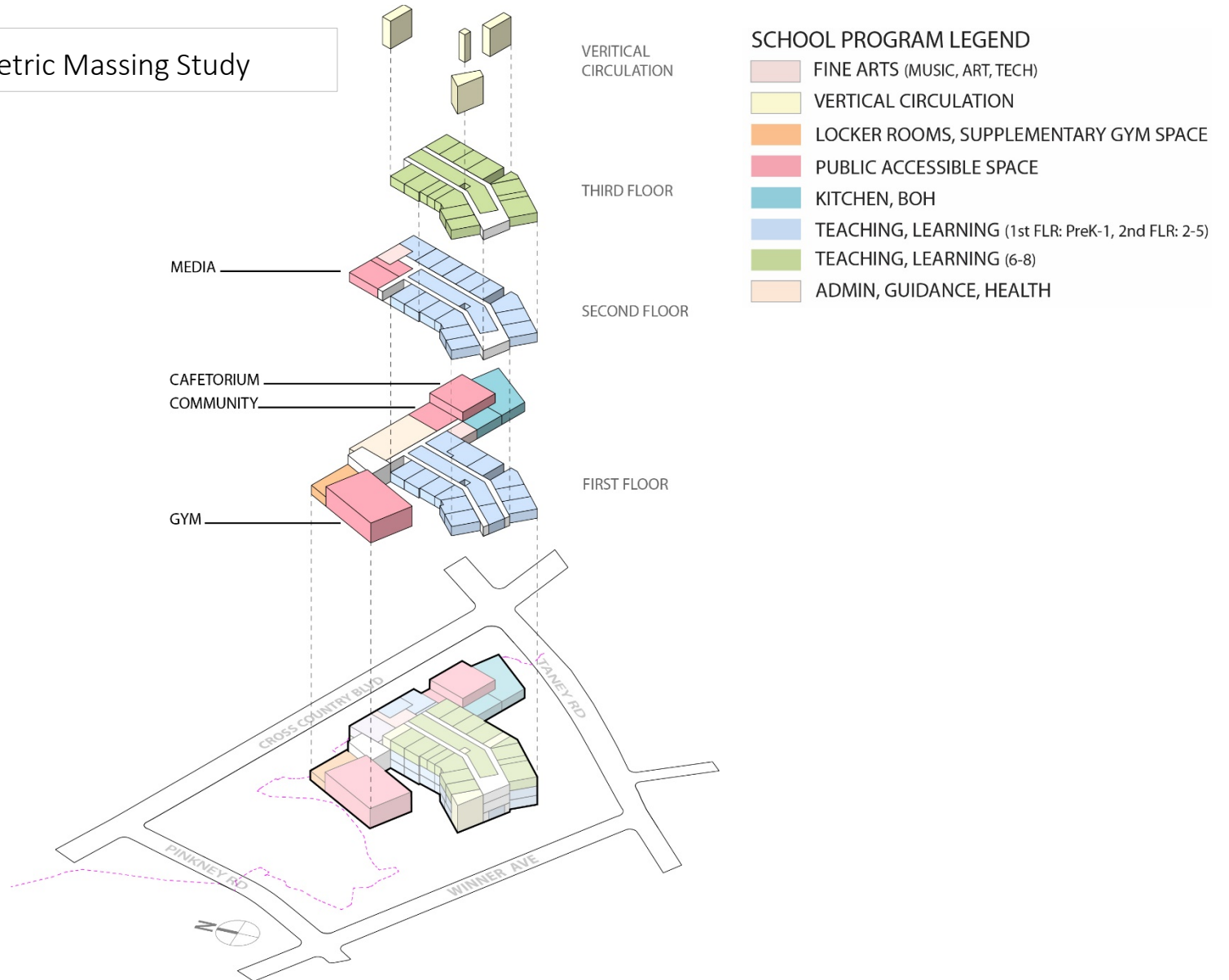


Cross Country Elementary/Middle School Replacement
 Concept Design Meeting February 23, 2021

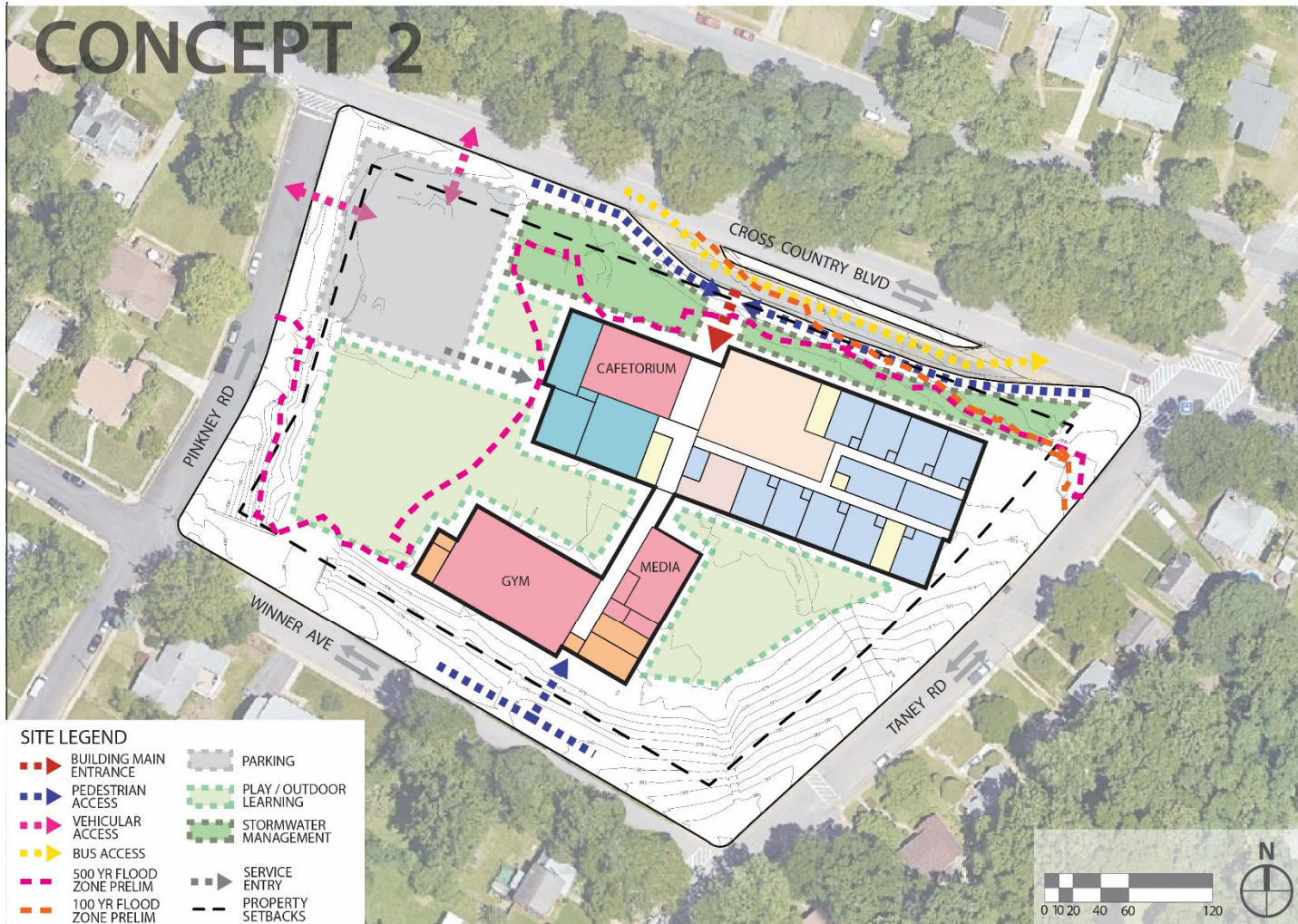
Site Section - Massing Study



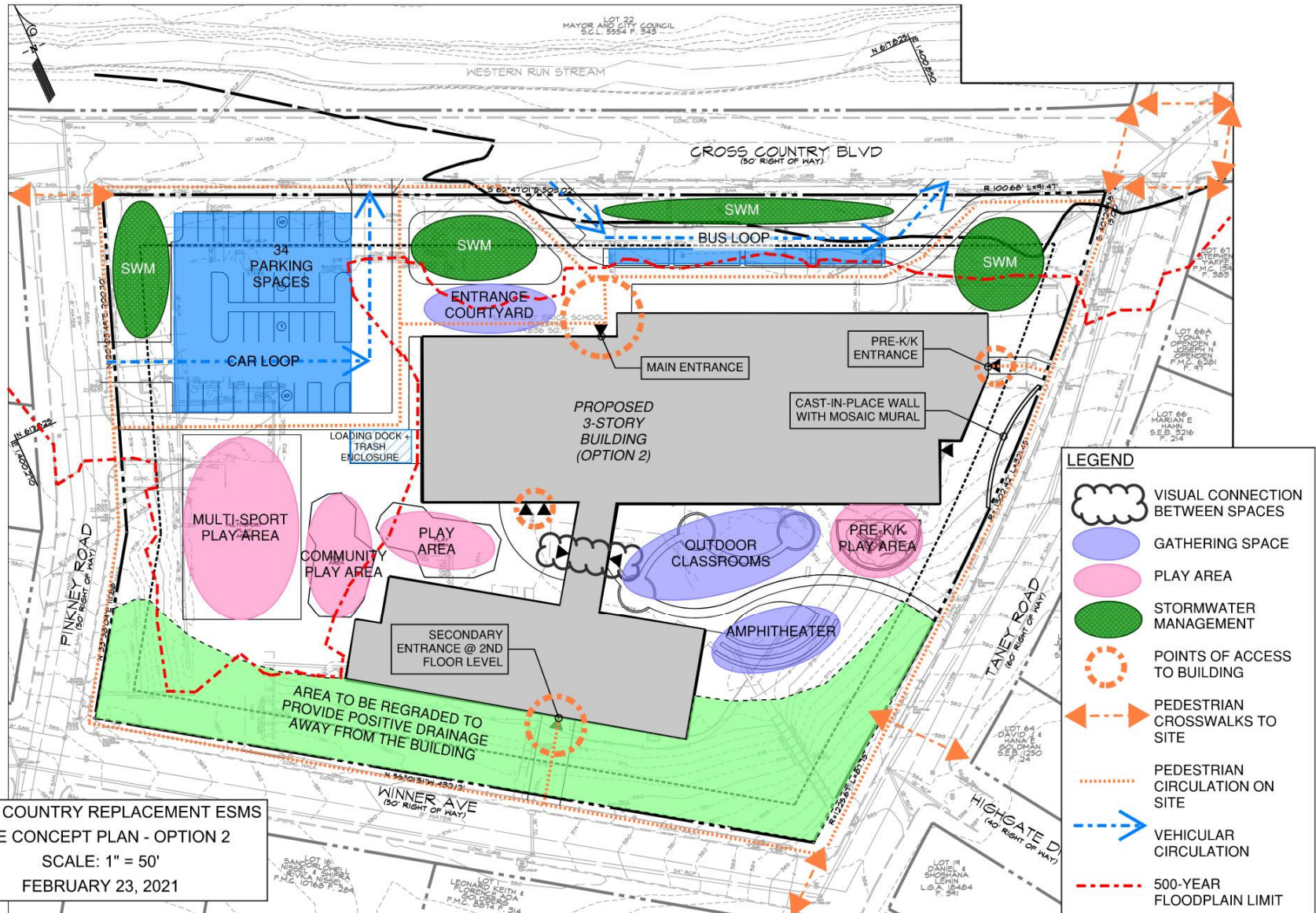
Concept – Axonometric Massing Study



Cross Country Elementary/Middle School Replacement
 Concept Design Meeting February 23, 2021

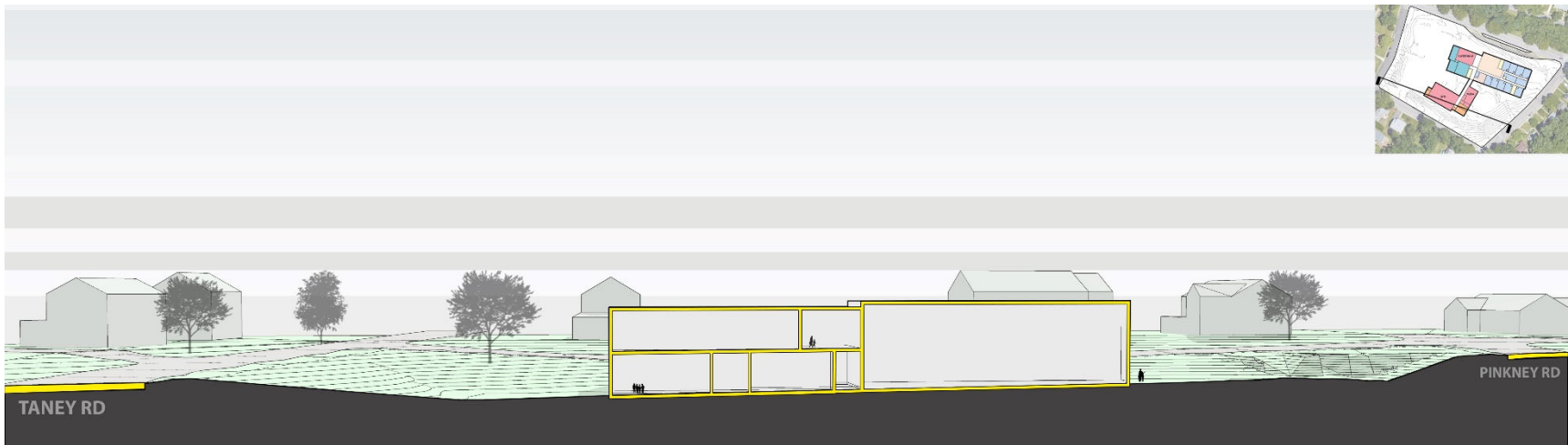
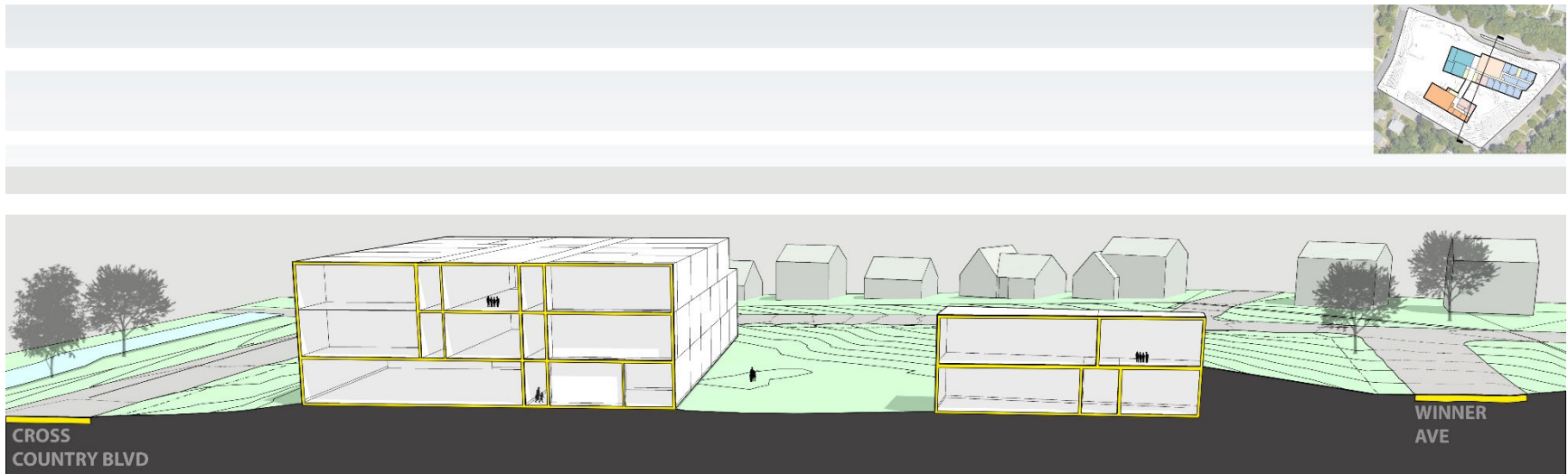


- SCHOOL PROGRAM LEGEND**
- FINE ARTS (MUSIC, ART, TECH)
 - VERTICAL CIRCULATION
 - LOCKER ROOMS, SUPPLEMENTARY GYM SPACE
 - PUBLIC ACCESSIBLE SPACE
 - KITCHEN, BOH
 - TEACHING, LEARNING (1st FLR: PreK-1, 2nd FLR: 2-5)
 - TEACHING, LEARNING (6-8)
 - ADMIN, GUIDANCE, HEALTH

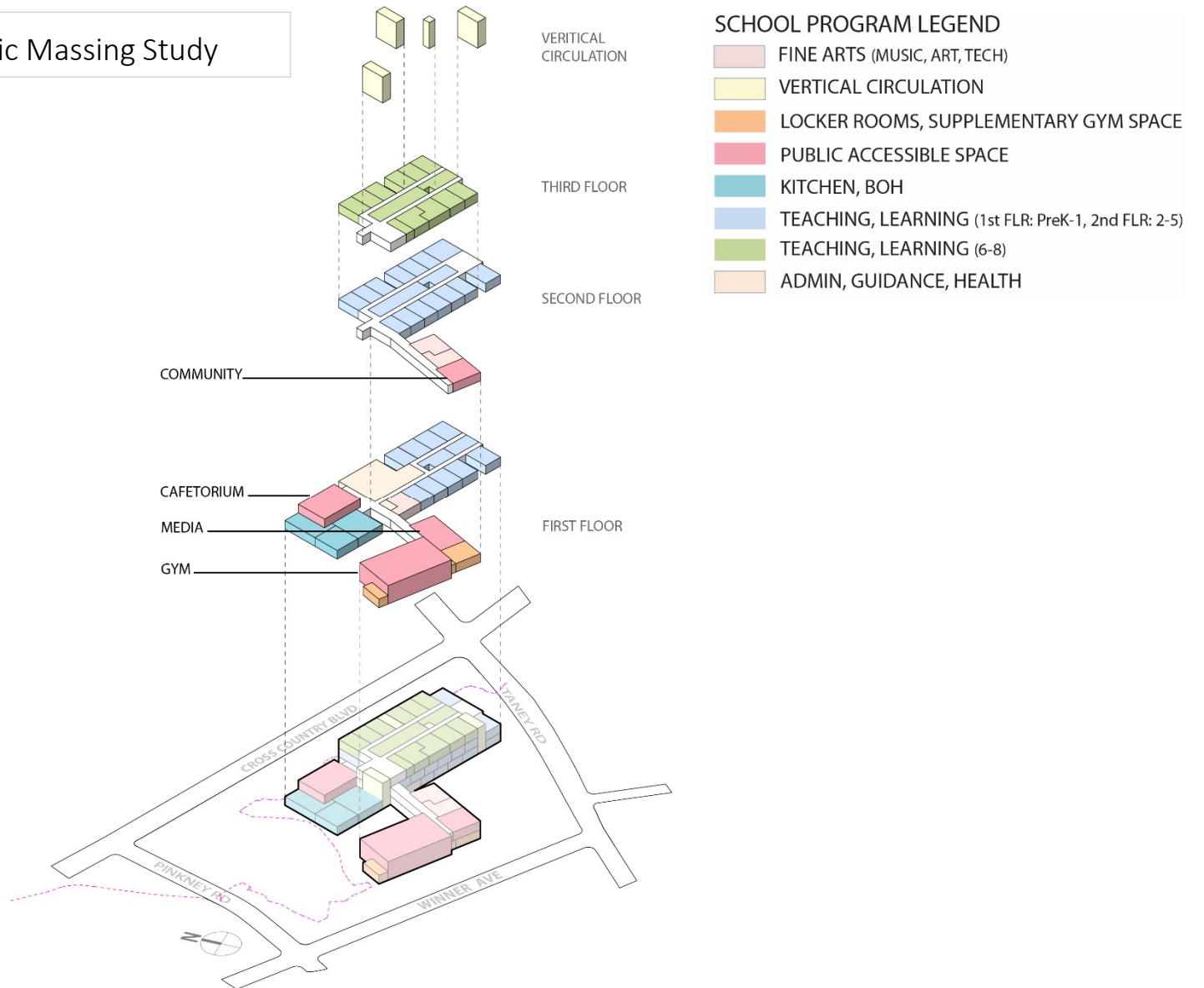


Cross Country Elementary/Middle School Replacement
 Concept Design Meeting February 23, 2021

Site Section - Massing Study



Concept 2 – Axonometric Massing Study



Cross Country Elementary/Middle School Replacement
 Concept Design Meeting February 23, 2021

Design

Design Schedule

Planning (6-8 Months)

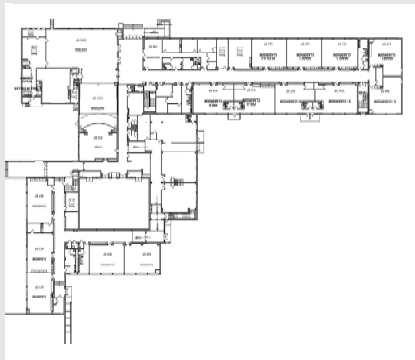
Pre-Design (2-4 Months)

Design (6-8 Months)



Building Opening Summer 2023

Concept Design
March 2021



Schematic Design
May 2021



Design Development
July 2021



Final Drawings
December 2021



Overview

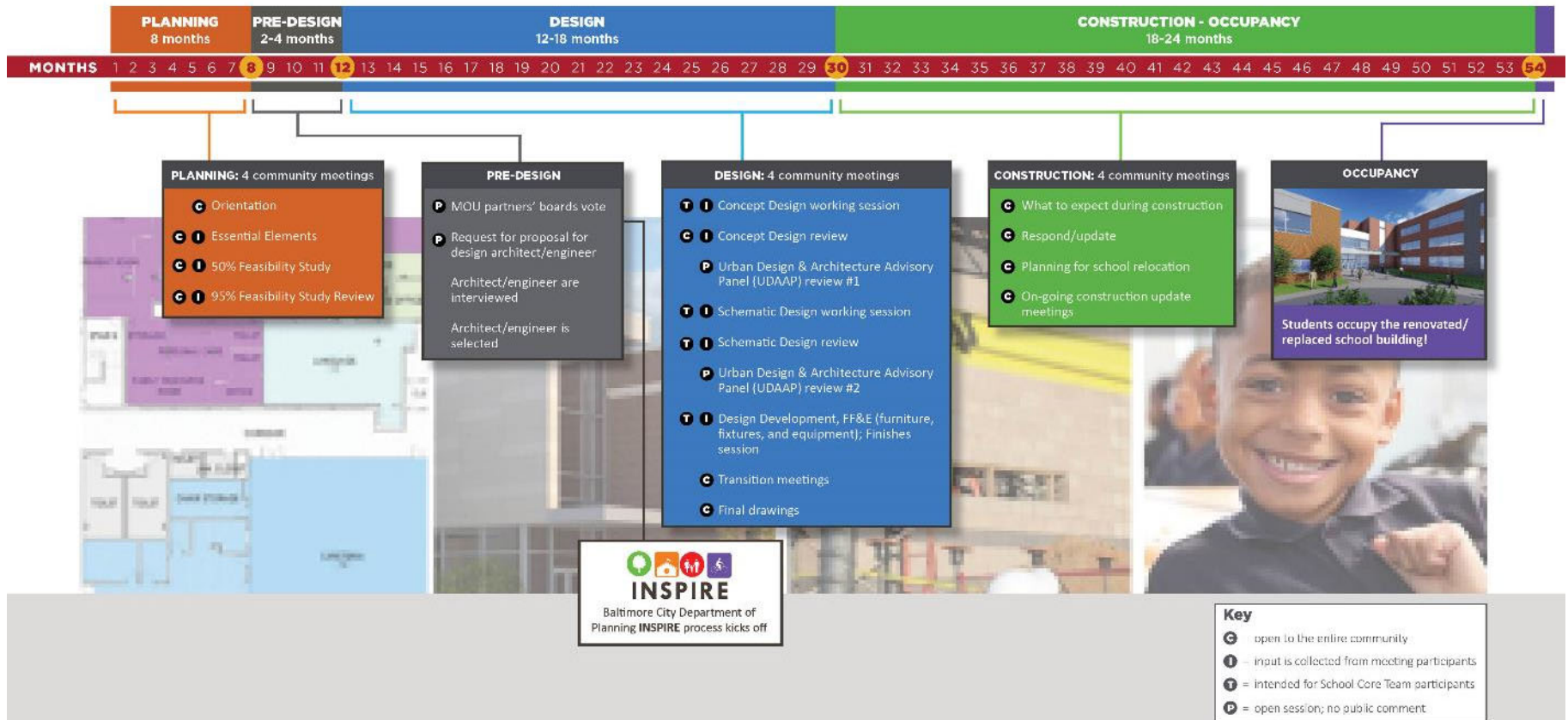
Engagement Process



21st Century School Buildings Engagement Process

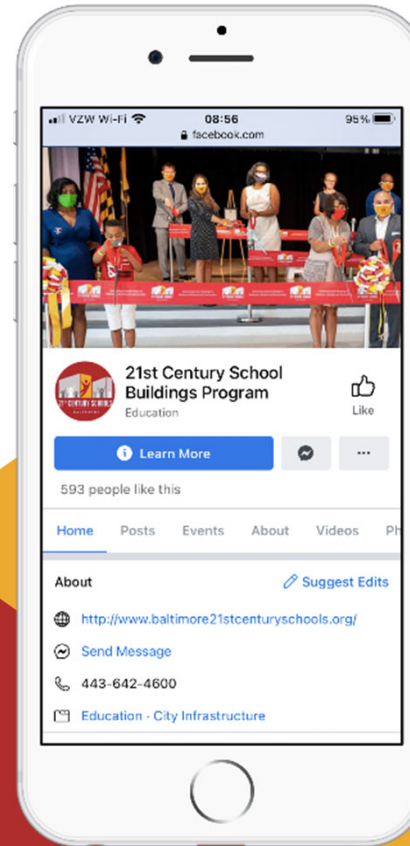
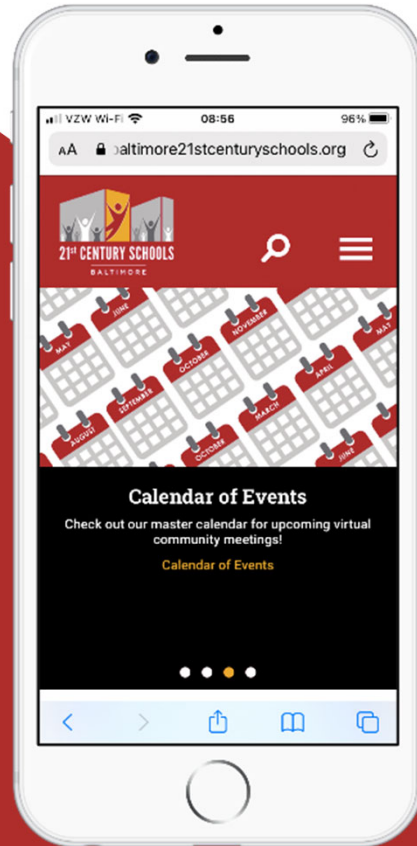
The essential role of school stakeholders in the 21st Century School Buildings process.

Each school is unique. Creating modern, high-quality learning environments that meet the needs of individual school communities and support their vision for student success is a collaborative effort. The process for the design of each school building takes 18-24 months. The process for the construction of a school takes an additional 18-24 months marked by multiple opportunities for school communities to provide input and feedback.



Updated 1/13/2020

www.baltimore21stcenturyschools.org @21stCenturySchoolBuildingProgram



Questions?

Program Contacts

Sr. Community & Public Relations Coordinator

Ivy McNeil

idmcneill01@bcps.k12.md.us

Community & Public Relations Manager

Renee Stainrod

rastainrod@bcps.k12.md.us

Program Information

21st Century School Buildings Program Office

(443) 642-4600



Thank You.

This presentation was brought to you by the 21st Century School Buildings Program.



www.baltimore21stcenturyschools.org

21st Century School Buildings Program
Baltimore City Public Schools
200 East North Avenue Room 407-B
Baltimore MD 21202
(443) 642-4600

Dorothy Hellman
Executive Director, 21st Century Buildings Program
Baltimore City Public Schools

Gary McGuigan
Executive Vice President, Capital Development Division
Maryland Stadium Authority

Tisha Edwards
Mayor's Health, Human Services, Education and Youth
City of Baltimore – Office of Children and Family Success

Robert Gorrell
Executive Director, Public School Construction Program
State of Maryland

BALTIMORE CITY
PUBLIC SCHOOLS

