



21st Century School Buildings Program

Commodore John Rodgers Elementary/Middle School
COMMUNITY MEETING – CONSTRUCTION UPDATE

December 12, 2024



| Presenters | Agenda |
|--|--|
| <p>Ivy McNeill Senior Program Coordinator Community Engagement and Public Relations 21st Century School Buildings Program</p> <p>Cyndi Smith Executive Director, Facilities Planning, Design and Construction – Baltimore City Public Schools</p> <p>Charlie Ravenna Project Director Maryland Stadium Authority</p> <p>Construction Manager CAM Construction</p> | <ul style="list-style-type: none"> • Procurement Update • Work Progress • Schedule • Site Plan • Floor Plans • Renderings • Q&A |

PARTICIPATION ETIQUETTE FOR OPEN FORUM

To ensure a wide range of perspectives and voices, participants are invited to share your views within a 2-minutes timeframe.

1.

Stay Engaged

This means remaining emotionally, intellectually, and relationally involved in the dialogue

To stay engaged is to not let your heart and mind “check out” of the conversation while leaving your body seated at the table

Resist the natural inclination to move away from the conversation by disengaging

2.

Speak your Truth

This means being honest about your thoughts, feelings, and opinions and not just saying what you perceive others want to hear

To not speak our truth often leads to deeper confusion, mistrust, and misunderstanding

Speaking your own personal truth allows you to fully engage

3.

Experience Discomfort

This means engaging in tough conversations that may make you feel uncomfortable

Agreeing to experience discomfort allows you to deal with the reality of this project and processes in an honest and forthright way

This is how we “build muscle”, increasing our tolerance for discomfort so that we increase our ability to address the challenges

4.

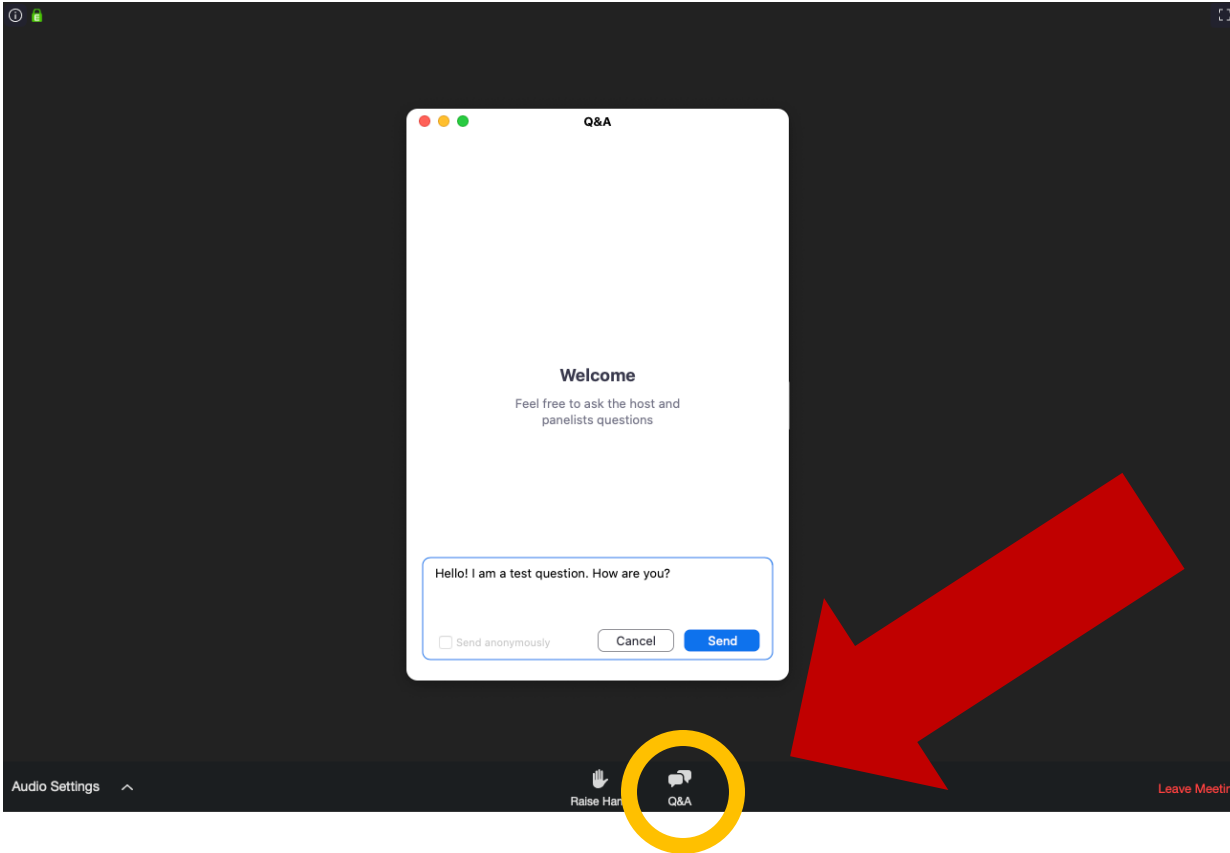
Focus on Personal, Local and Immediate

This means exploring and understanding my own feelings and expectations. Always speak from a place of “I”. For example, use language such “I feel”, “I believe”, etc.

5.

Expect/Accept Non-closure

This means there may not be closure or resolution, but commitment to ongoing dialogue



Please use the **Q&A** feature at the bottom of the Zoom screen to submit questions.



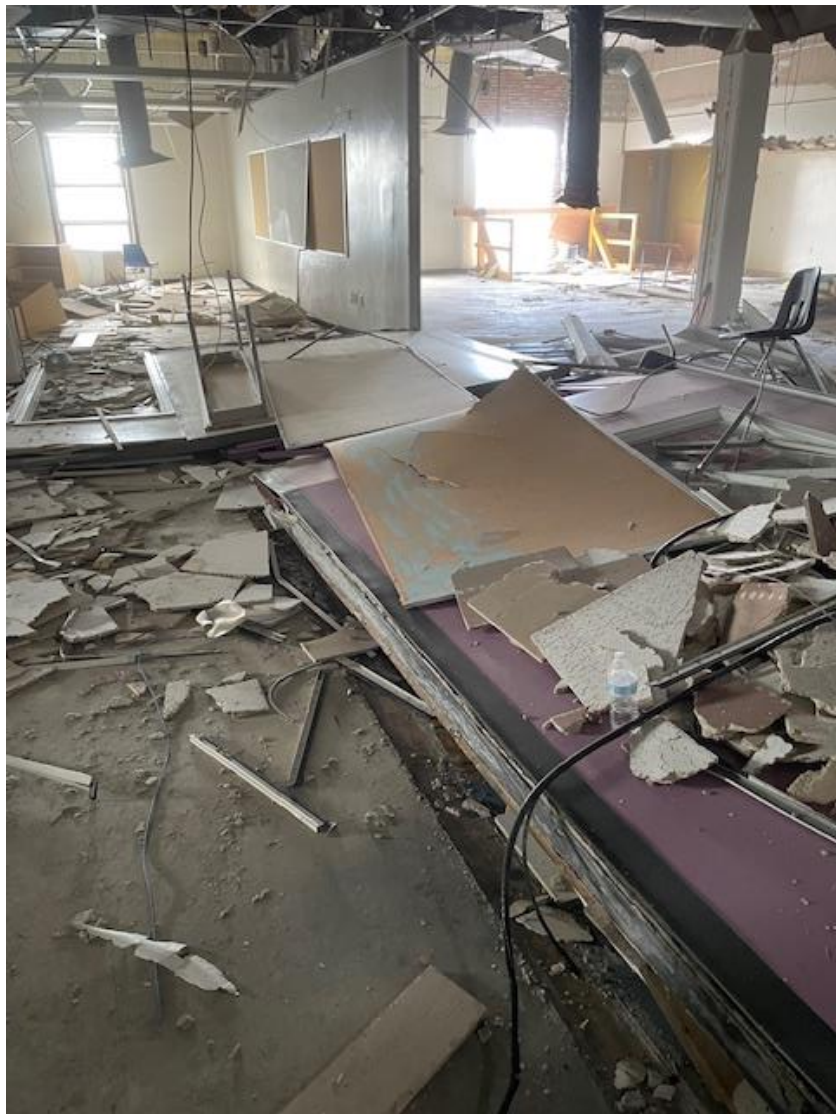
If you have questions **not related to Construction**, please submit them here and we will provide answers on the 21st Century website after the meeting.



- The State of Maryland Board of Public Works (BPW) approvals:
- Pre-Construction Services Contract to CAM Construction August 7, 2024.
- CAM Construction GMP-1 October 2, 2024.
- CAM Construction GMP-2 December 4, 2024.
- The Only Remaining Procurement is Furnishing Furniture & Equipment (FFE) which is being procured by BCPS and will not begin the procurement process until the Late Summer / Fall 2025



- Stained glass has been removed
- The Hazmat removal is 75% complete
- Building Demo is 40% complete
 - They are complete with the interior soft demo and sorting of materials for LEED
 - Sitework SEC Controls are ongoing.
 - Concrete Demo will follow SEC Controls
 - The Public Utility Disconnects are ongoing.
- The Shoring Piles start early January 2025 – N. Chester and E. Fairmount. Then they will install the shoring to enable the completion of building demo. Then they will restart piles in March 2025 along the North Property Line between the Apartment Building.



Commodore John Rodgers E/MS
Community Meeting | Construction Update
December 12, 2024



Commodore John Rodgers E/MS
Community Meeting | Construction Update
December 12, 2024



Commodore John Rodgers E/MS
Community Meeting | Construction Update
December 12, 2024



Commodore John Rodgers E/MS
Community Meeting | Construction Update
December 12, 2024



Commodore John Rodgers E/MS
Community Meeting | Construction Update
December 12, 2024

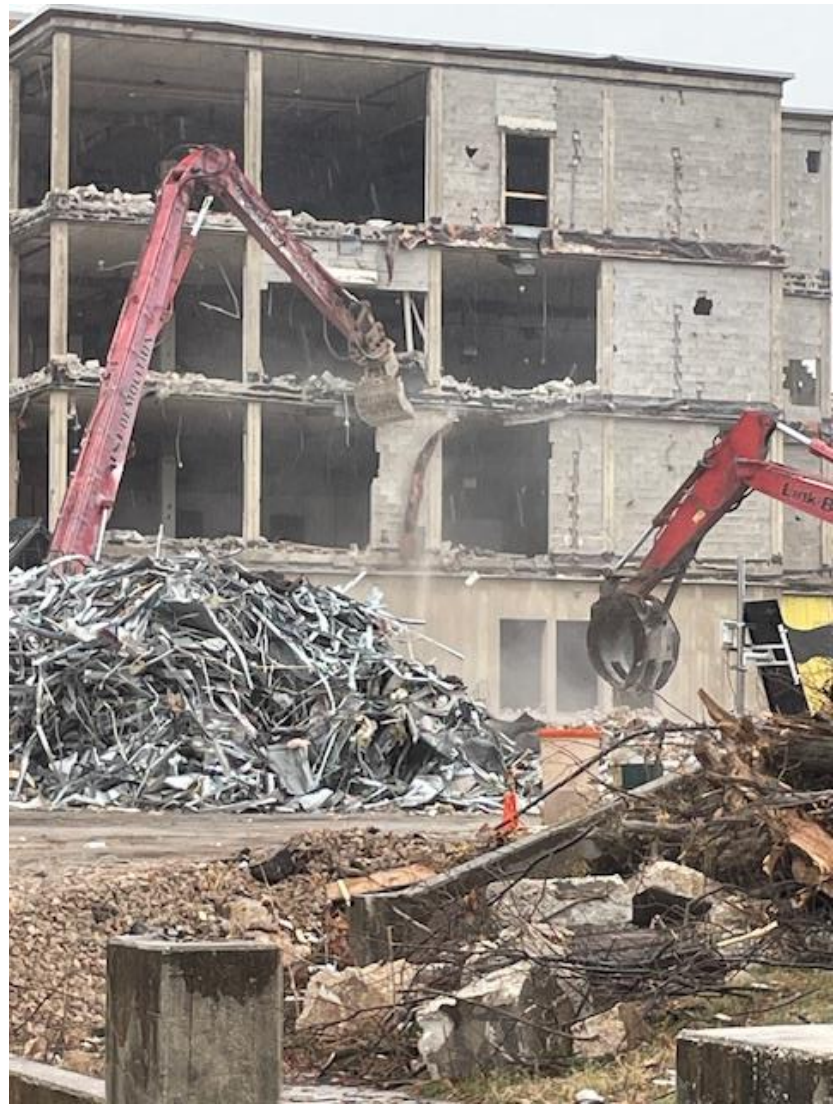




Commodore John Rodgers E/MS
Community Meeting | Construction Update
December 12, 2024



Commodore John Rodgers E/MS
Community Meeting | Construction Update
December 12, 2024



Commodore John Rodgers E/MS
Community Meeting | Construction Update
December 12, 2024

| | |
|---|--------------------|
| Abatement then Demolition Start: | Oct 7, 2024 |
| Parking Lane & Sidewalk Closures Adjacent to the Building Start: | Oct 15, 2024 |
| Building Construction Start: | Spring 2025 |
| Substantial Completion: | November 30, 2026* |
| Occupancy: | December 2026* |

** Dates listed are based on a projected schedule and are subject to change.*



Site Features

- Main entrance on N. Washington Ave. – provides bus and vehicular access at main entrance location
- Secure play area from northeast neighborhood at N. Chester Street

Safety & Security

- Defined main entrance at bus and parent drop-off
- Three separate and secured play areas
- Dedicated staff, visitor, and community parking totaling 34 spaces

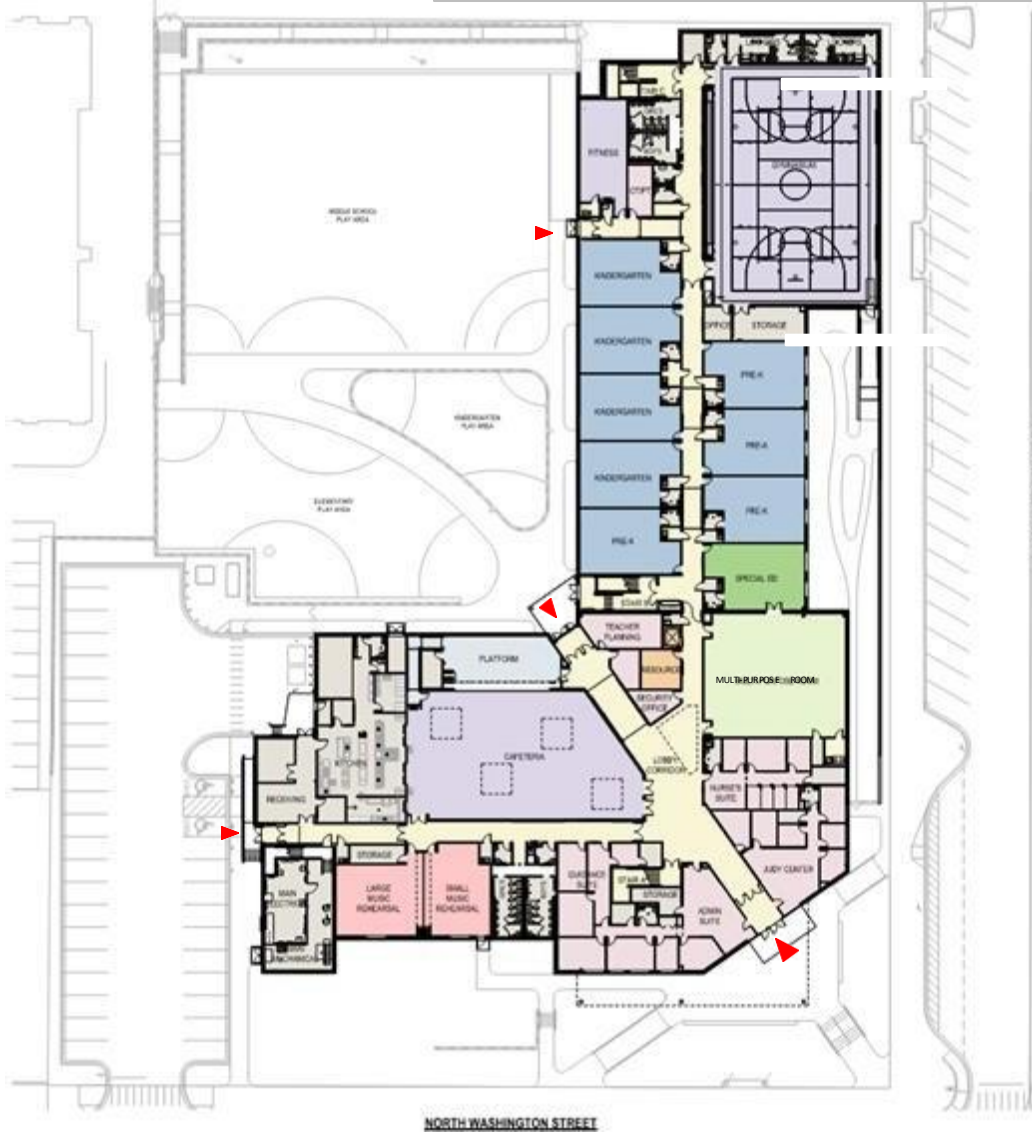
Site Opportunities

- Re-oriented building and site to optimize use of available space

Pedestrian Circulation & Community Connectivity

- Main entrance and parking provide access to all community support spaces.





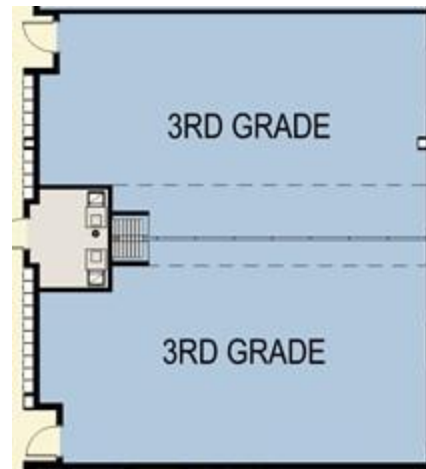
- Pre-K-Kindergarten grades
- Special education classroom
- Music classrooms
- Multi-Purpose Room
- Gym/Fitness and support spaces
- Cafetorium/Platform
- Teacher Planning
- Administration
- Guidance
- Health suite
- Family resource room
- Judy Center

First Floor GSF: 53,43 SF
Overall SF: 118,073 SF





- Grades 1-4
- Special education classroom
- Speech
- Art classrooms
- Media center/Video room
- Flexible Classroom opportunity

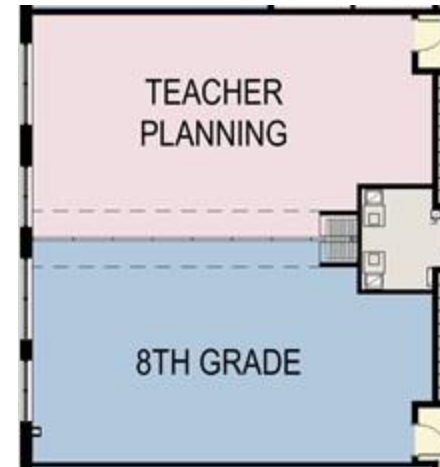


Second Floor GSF: 31,858 SF
Overall SF: 118,073 SF





- Grades 5-8
- Special education classrooms
- Science classrooms
- Technology lab
- Resource rooms
- Flexible Teacher Planning



Third Floor GSF: 32,802 SF
Overall SF: 118,073 SF





CR





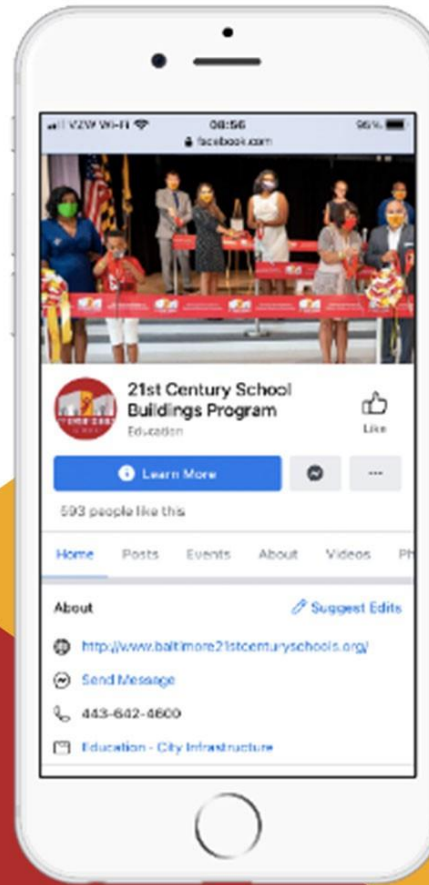
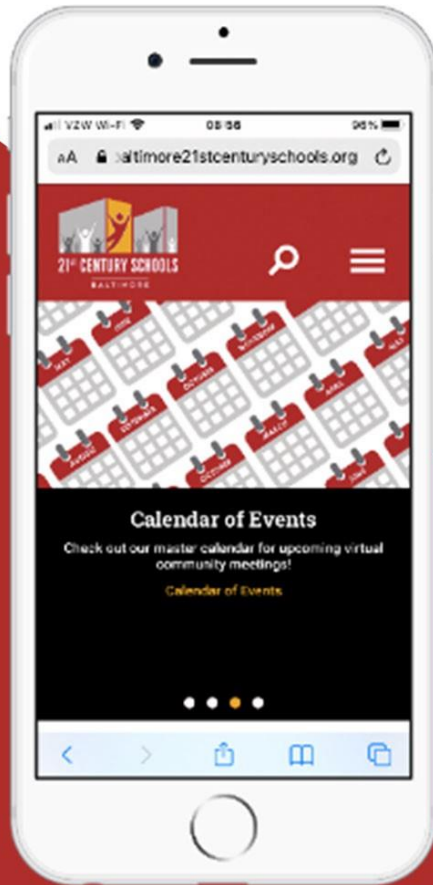
CR





Baltimore21stCenturySchools.org

FaceBook.com/
21stCenturySchoolBuildingsProgram



Questions?

Program Contacts

Sr. Community & Public Relations Coordinator

Ivy McNeill

idmcneill01@bcps.k12.md.us

Program Information

21st Century School Buildings Program Office

(443) 642-4600



21stCSBaltimore



21stCenturySchoolBuildingsProgram



21stCSBaltimore

Thank You.

This presentation was brought to you by the 21st Century School Buildings Program.



Baltimore City Public Schools

200 East North Avenue Room 407-B
Baltimore MD 21202
(443) 642-4600

www.baltimore21stcenturyschools.org

BALTIMORE CITY
PUBLIC SCHOOLS

