



21st Century School Buildings Program

Commodore John Rodgers Elementary/Middle School

COMMUNITY MEETING – CONSTRUCTION UPDATE

January 29, 2026 – March 24, 2026 (Make Up Meeting)



Presenters	Agenda
<p>Ivy McNeill & Alicia Thomas Senior Program Managers Community & Engagement Baltimore City Public Schools</p> <p>TaMikka Sykes Director, Community Engagement & Strategic Partnerships Baltimore City Public Schools</p> <p>Cyndi Smith Executive Director – Capital Projects Baltimore City Public Schools</p> <p>Charlie Ravenna Project Director Maryland Stadium Authority</p> <p>Construction Manager CAM Construction</p>	<p>Overview and Introductions</p> <p>Project Recap</p> <ul style="list-style-type: none"> • Procurement Update • Work Progress • Schedule • Site Plan • Floor Plans • Renderings <p>Questions and Feedback</p>

Commodore John Rodgers Project: Where We Are Now



Community Meeting Construction Update (September 18, 2025)

The construction team presented an overview of the building design, provided updates on site safety and security measures, and shared progression photos illustrating construction progress.



Post Meeting Engagement and Follow-Up (September 2025 – January 2026)

- Maintained regular check-ins with school leadership to address issues and resolve challenges.
- Gathered, documented, and shared ongoing stakeholder feedback.
- Provided ongoing coordination and support with MTA and Bus Hub operations.



Construction Update Meeting (March 24, 2026)

Today's presentation will provide Commodore John Rodgers EMS stakeholders with an update on construction progress.



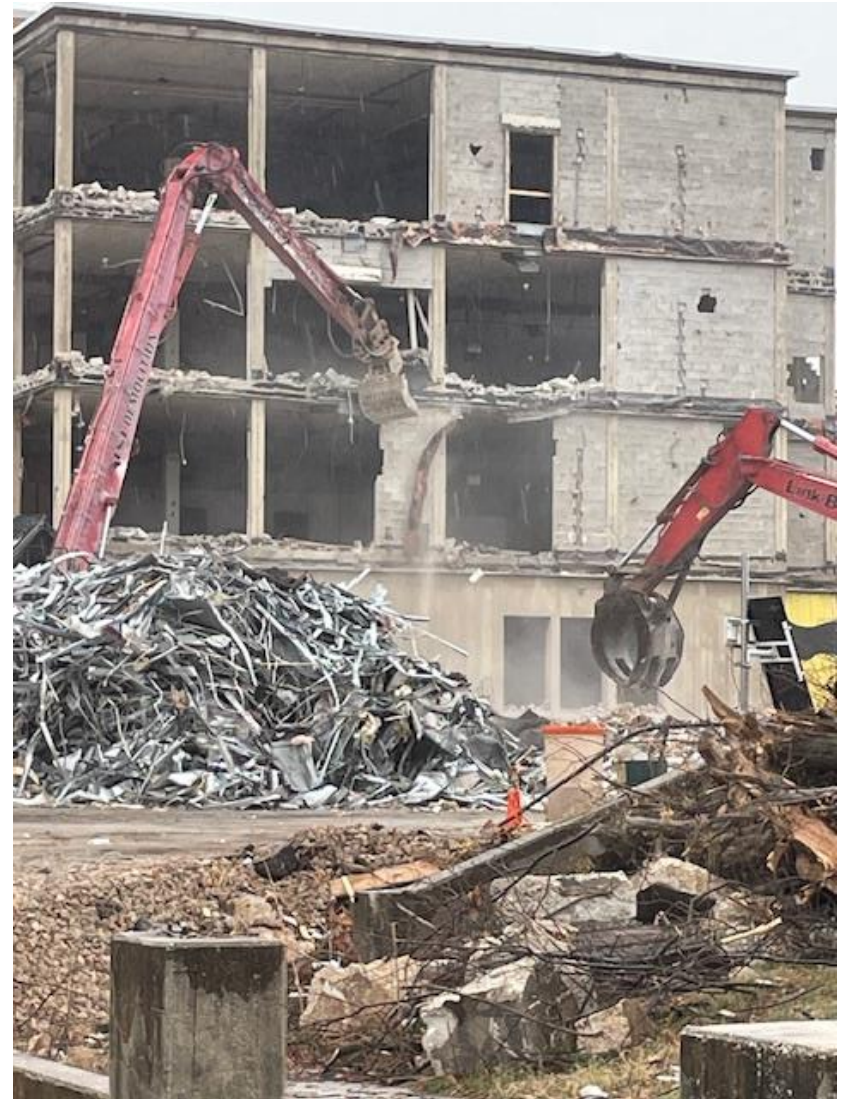
The State of Maryland Board of Public Works (BPW) approvals:

- Pre-Construction Services Contract to CAM Construction August 7, 2024.
- CAM Construction GMP-1 October 2, 2024.
- CAM Construction GMP-2 December 4, 2024.

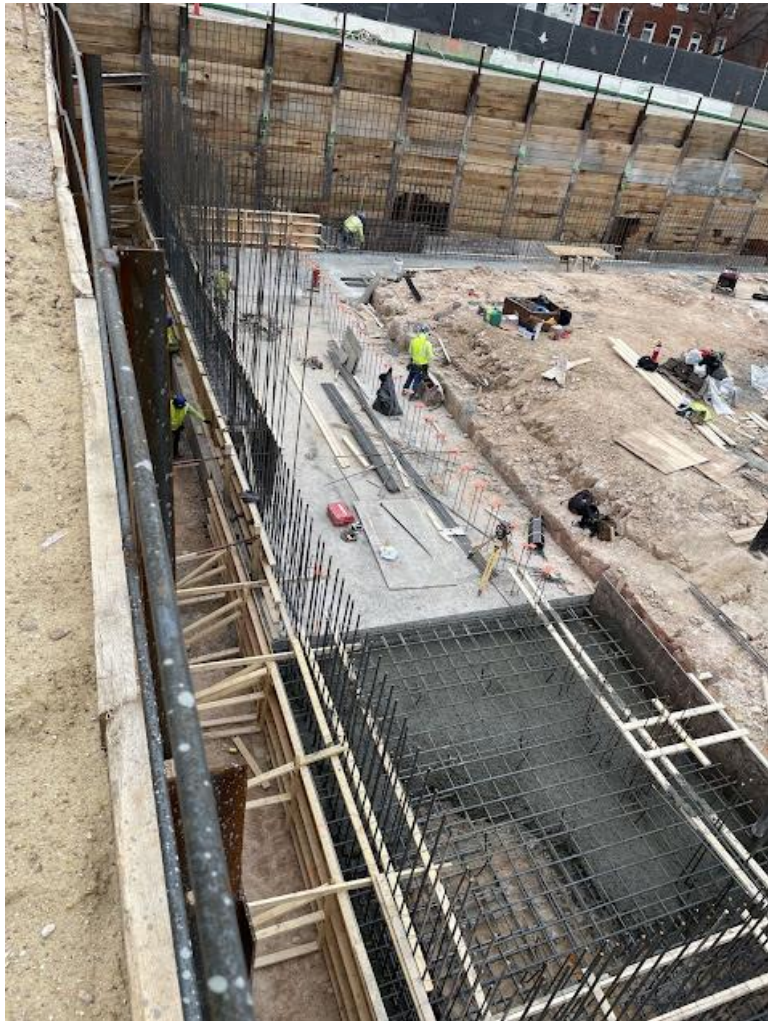
The Only Remaining Procurement is Furniture Fixtures & Equipment (FFE) which is being procured by BCPS and will begin the procurement process early Spring 2026



- Structural Steel started in Aug 2025 and completed in November 2025.
- Elevated Concrete Floor Slabs followed Structural Steel and completed November 2025.
- Building Envelope Walls followed the Elevated Concrete Slabs and will continue thru Winter 2025/2026.
- Interior Wall Framing followed the Elevated Concrete Slabs and will continue thru Winter 2025/2026.
- Roofing and Building Envelope Waterproofing followed the Building Envelope Walls and will continue thru Winter 2025/2026.
- Street Utilities are underway and will continue thru Spring 2026. From the Street onto site then to the building following the building envelope.



Commodore John Rodgers E/MS
Community Meeting | Construction Update
January 29, 2026







Commodore John Rodgers E/MS
Community Meeting | Construction Update
January 29, 2026



Commodore John Rodgers E/MS
Community Meeting | Construction Update
January 29, 2026



Commodore John Rodgers E/MS
Community Meeting | Construction Update
January 29, 2026



Commodore John Rodgers E/MS
Community Meeting | Construction Update
January 29, 2026





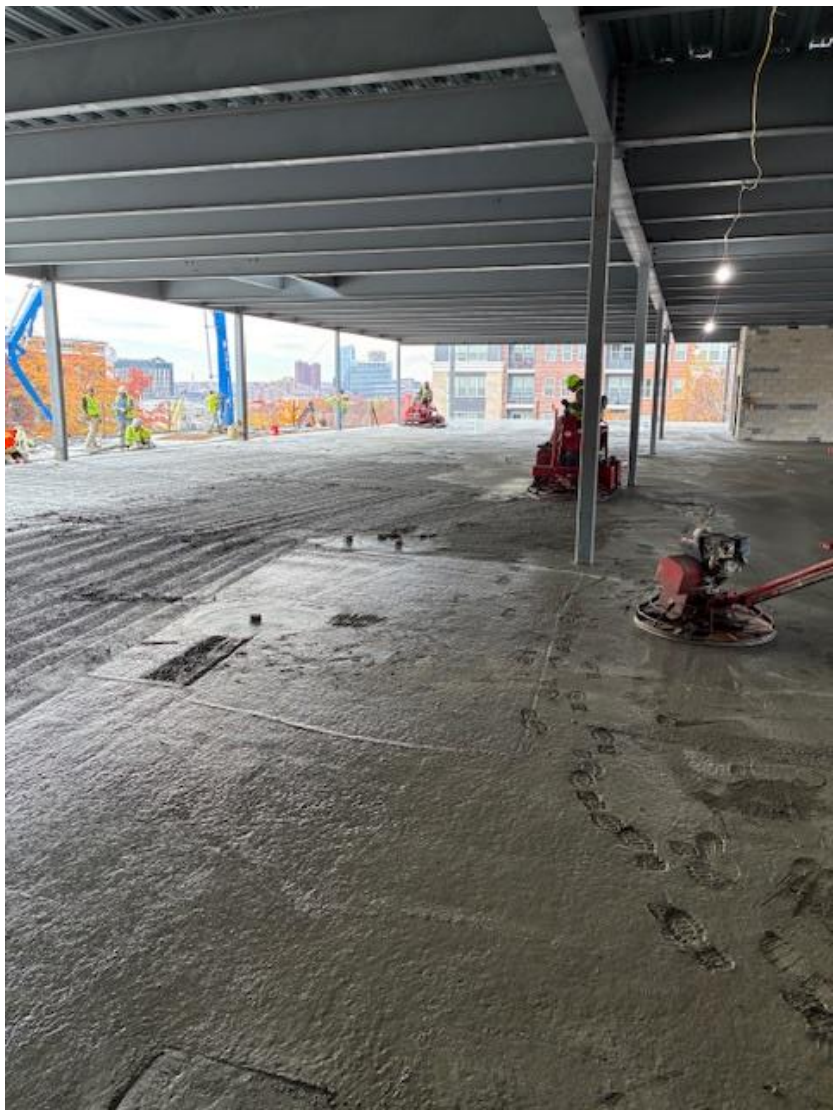
Commodore John Rodgers E/MS
Community Meeting | Construction Update
January 29, 2026



Commodore John Rodgers E/MS
Community Meeting | Construction Update
January 29, 2026











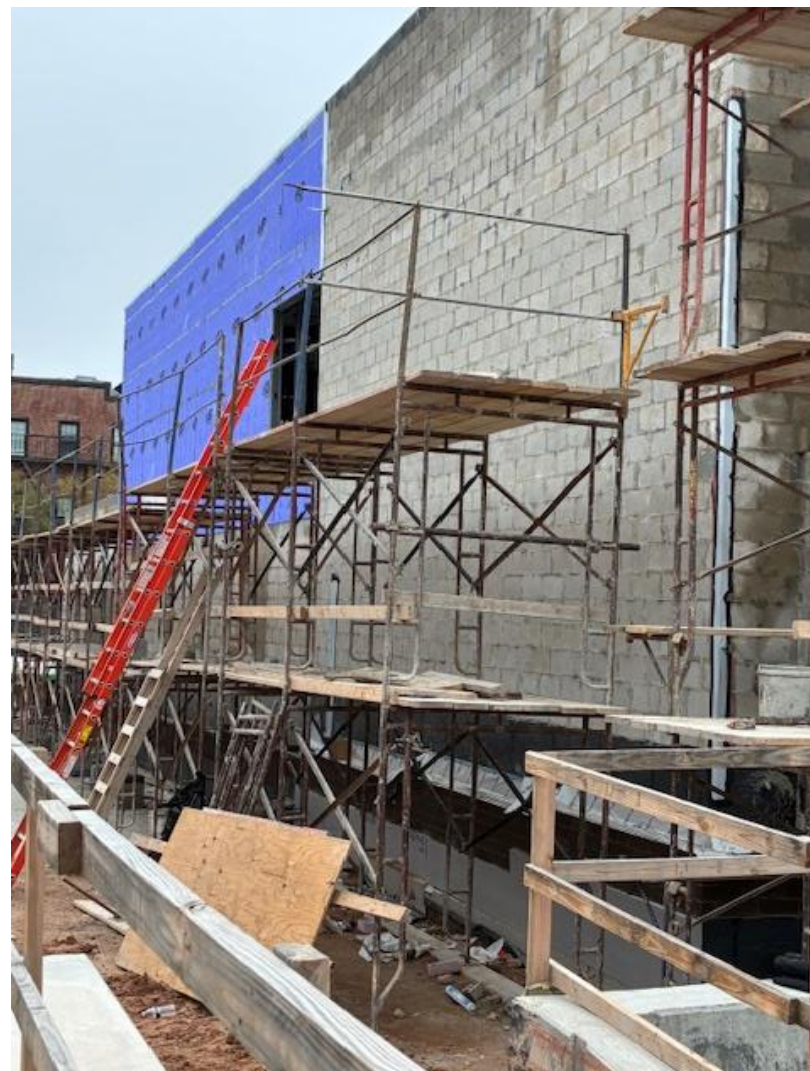






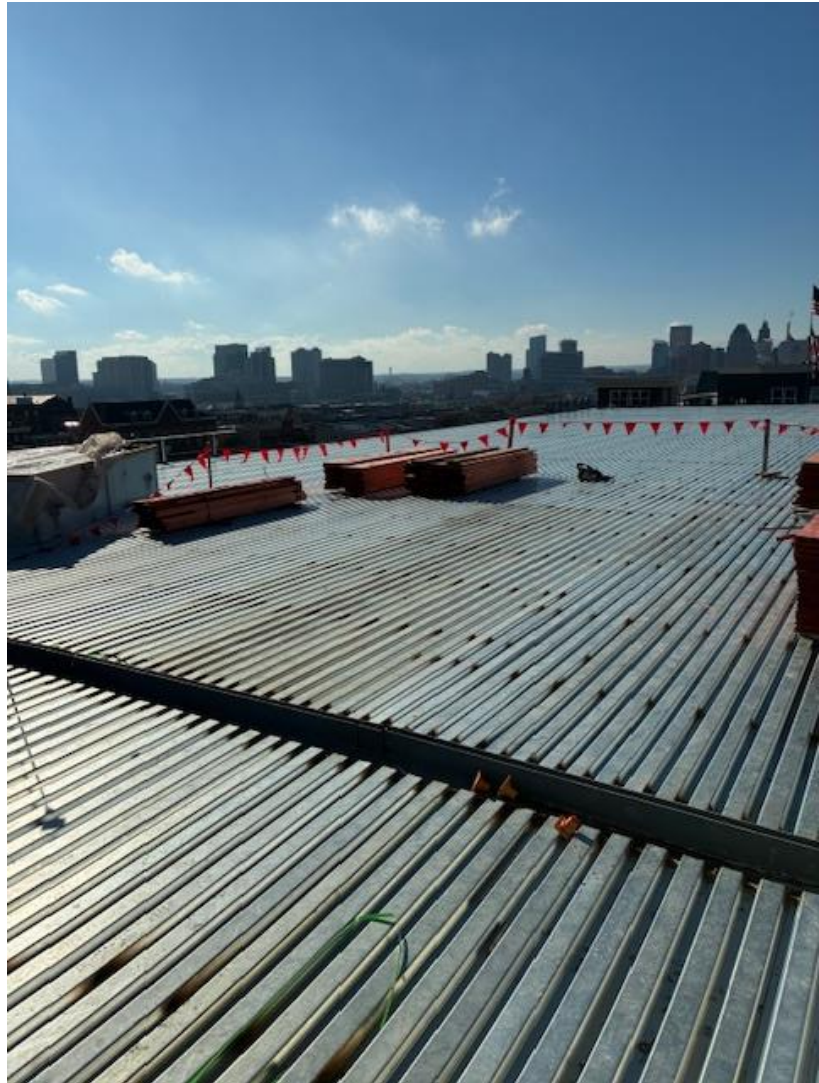




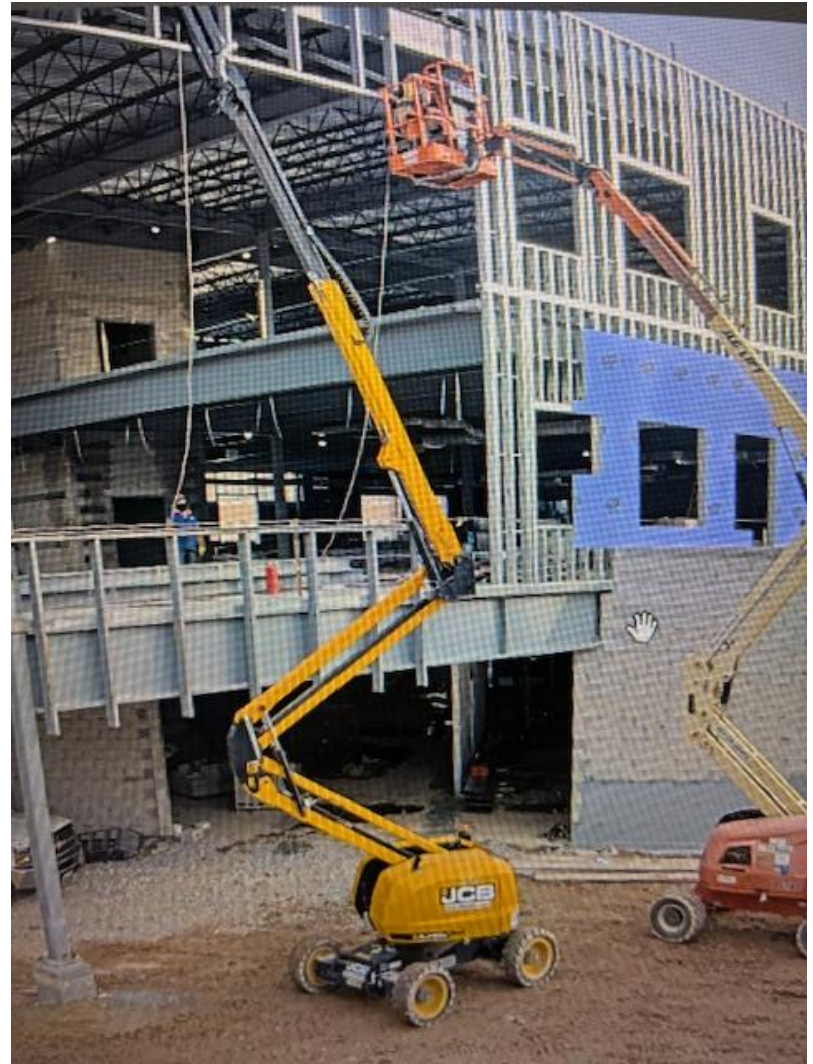








Commodore John Rodgers E/MS
Community Meeting | Construction Update
January 29, 2026



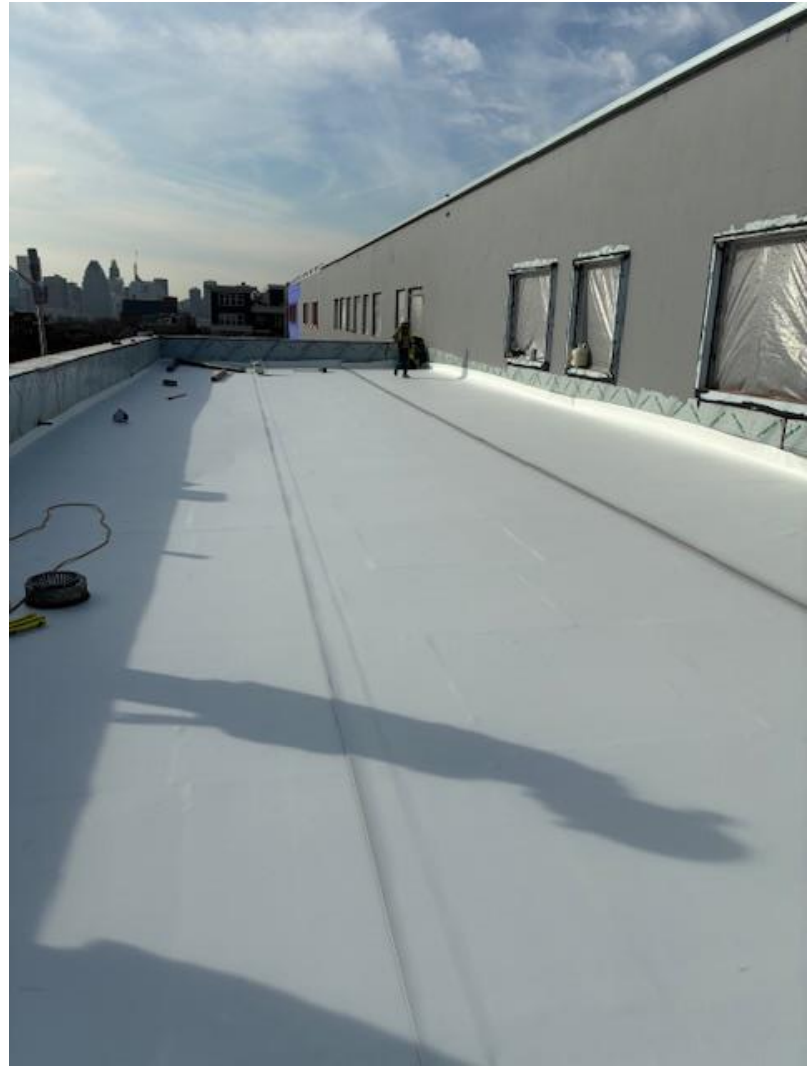
Commodore John Rodgers E/MS
Community Meeting | Construction Update
January 29, 2026



Commodore John Rodgers E/MS
Community Meeting | Construction Update
January 29, 2026



Commodore John Rodgers E/MS
Community Meeting | Construction Update
January 29, 2026



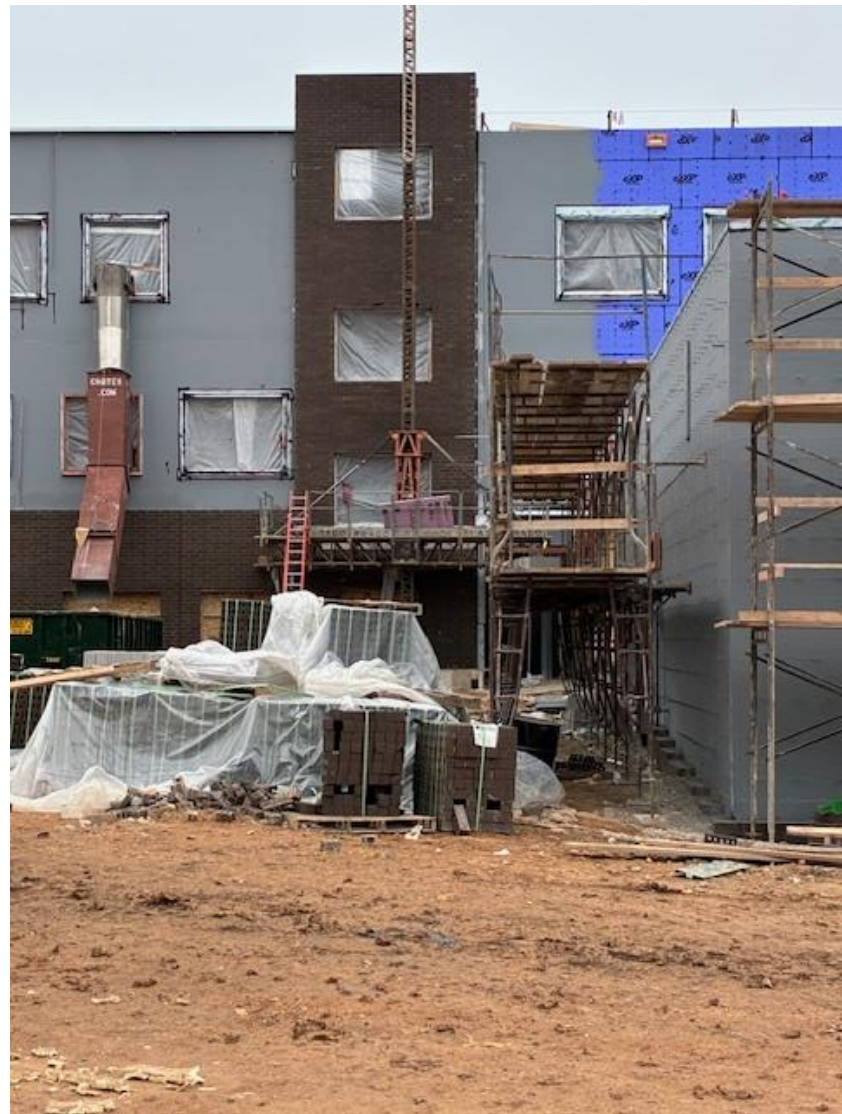
Commodore John Rodgers E/MS
Community Meeting | Construction Update
January 29, 2026



Commodore John Rodgers E/MS
Community Meeting | Construction Update
January 29, 2026



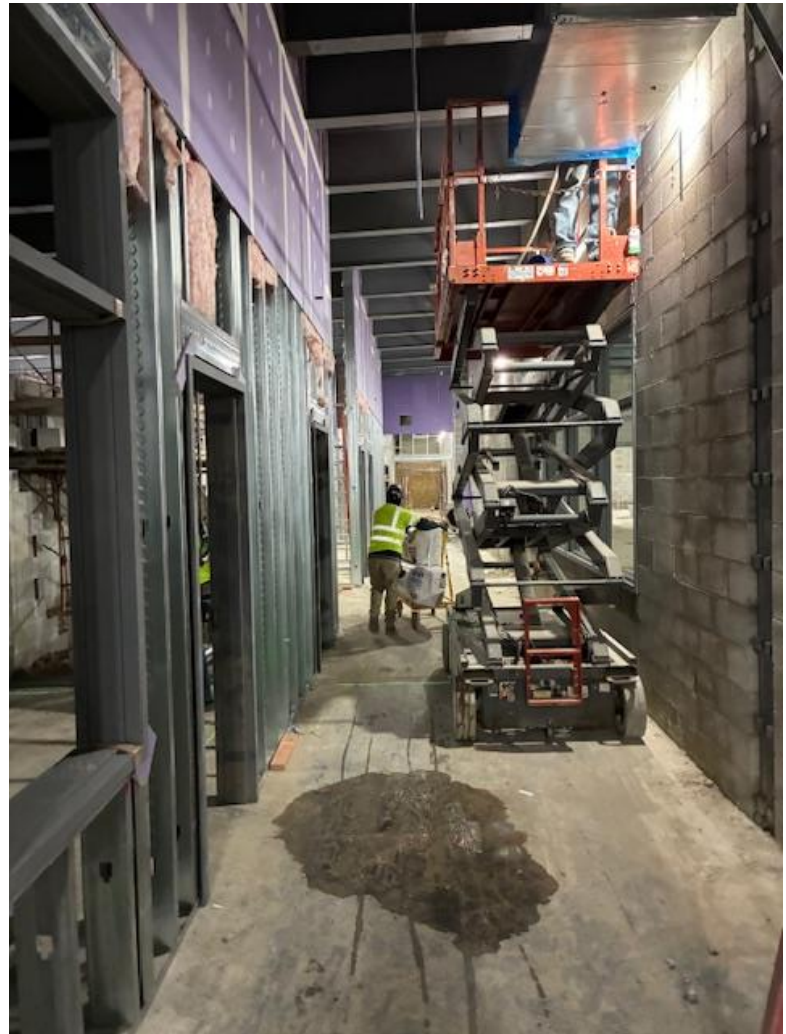
Commodore John Rodgers E/MS
Community Meeting | Construction Update
January 29, 2026





Commodore John Rodgers E/MS
Community Meeting | Construction Update
January 29, 2026









Commodore John Rodgers E/MS
Community Meeting | Construction Update
January 29, 2026











Commodore John Rodgers E/MS
Community Meeting | Construction Update
January 29, 2026



Commodore John Rodgers E/MS
Community Meeting | Construction Update
January 29, 2026



Commodore John Rodgers E/MS
Community Meeting | Construction Update
January 29, 2026

















Commodore John Rodgers E/MS
Community Meeting | Construction Update
January 29, 2026



Commodore John Rodgers E/MS
Community Meeting | Construction Update
January 29, 2026



Commodore John Rodgers E/MS
Community Meeting | Construction Update
January 29, 2026

Abatement then Demolition Start:	Oct 7, 2024
Parking Lane & Sidewalk Closures Adjacent to the Building Start:	Oct 15, 2024
Building Construction Start:	Spring 2025
Substantial Completion:	November 30, 2026*
Occupancy:	December 2026*

** Dates listed are based on a projected schedule and are subject to change.*



Site Features

- Main entrance on N. Washington Ave. – provides bus and vehicular access at main entrance location
- Secure play area from northeast neighborhood at N. Chester Street

Safety & Security

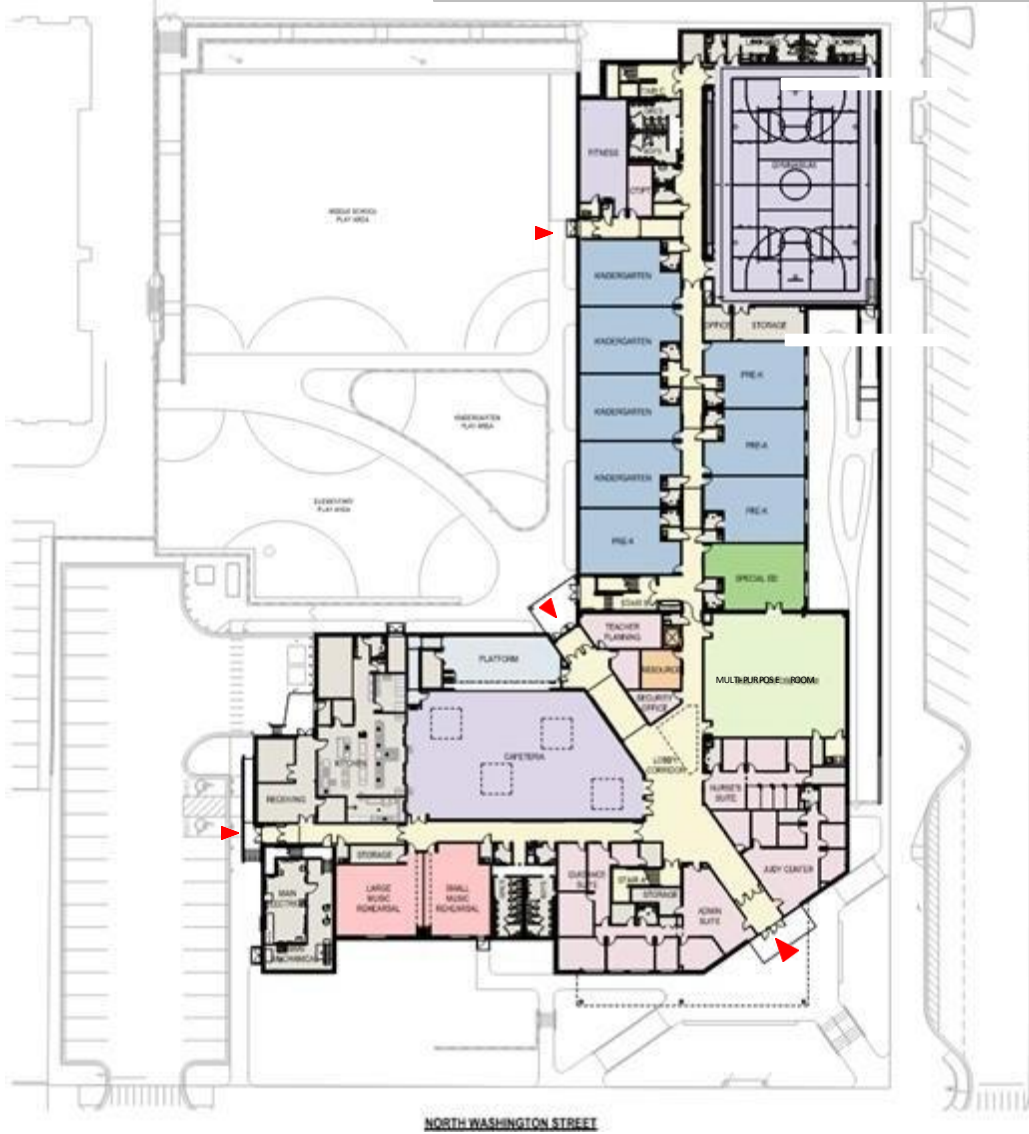
- Defined main entrance at bus and parent drop-off
- Three separate and secured play areas
- Dedicated staff, visitor, and community parking totaling 34 spaces

Site Opportunities

- Re-oriented building and site to optimize use of available space

Pedestrian Circulation & Community Connectivity

- Main entrance and parking provide access to all community support spaces.



- Pre-K-Kindergarten grades
- Special education classroom
- Music classrooms
- Multi-Purpose Room
- Gym/Fitness and support spaces
- Cafetorium/Platform
- Teacher Planning
- Administration
- Guidance
- Health suite
- Family resource room
- Judy Center

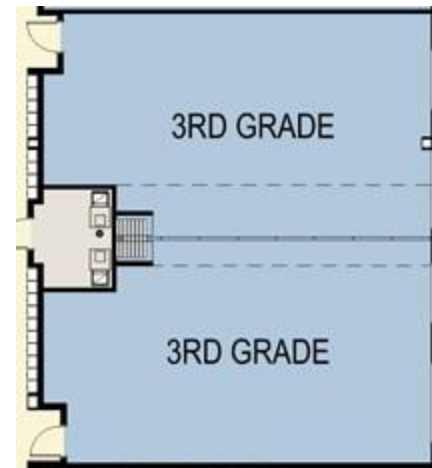


First Floor GSF: 53,43 SF
Overall SF: 118,073 SF

Commodore John Rodgers E/MS
Community Meeting | Construction Update
January 29, 2026

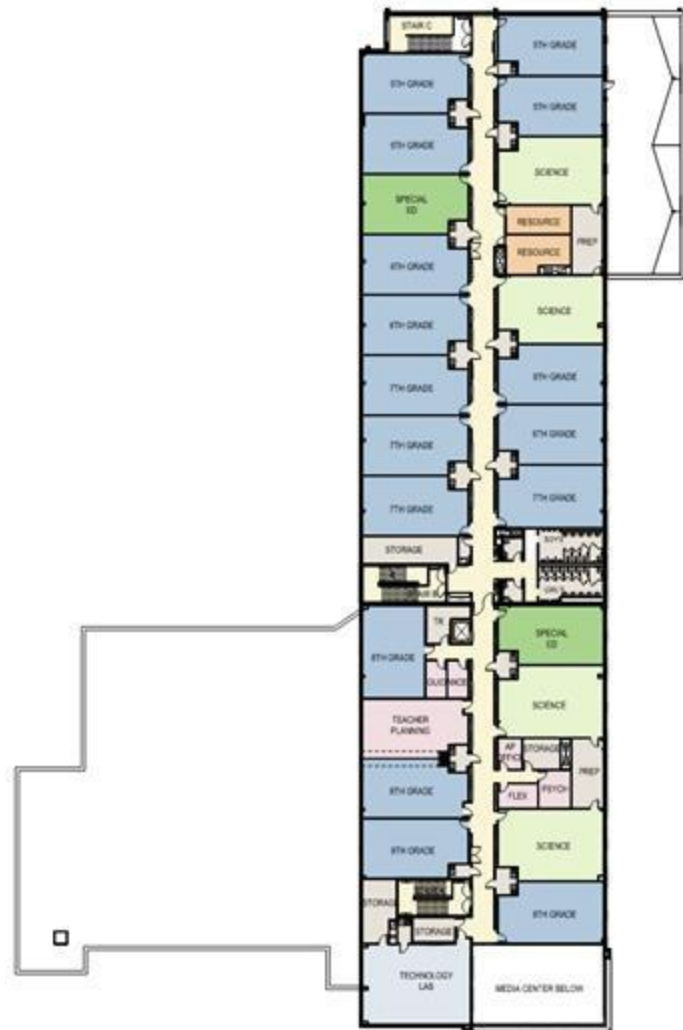


- Grades 1-4
- Special education classroom
- Speech
- Art classrooms
- Media center/Video room
- Flexible Classroom opportunity

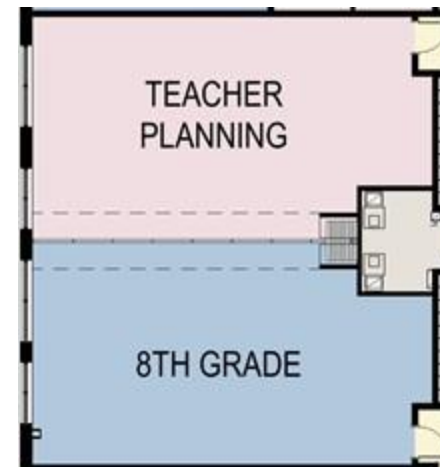


Second Floor GSF: 31,858 SF
Overall SF: 118,073 SF

Commodore John Rodgers E/MS
Community Meeting | Construction Update
January 29, 2026



- Grades 5-8
- Special education classrooms
- Science classrooms
- Technology lab
- Resource rooms
- Flexible Teacher Planning



Third Floor GSF: 32,802 SF
Overall SF: 118,073 SF

Commodore John Rodgers E/MS
Community Meeting | Construction Update
January 29, 2026







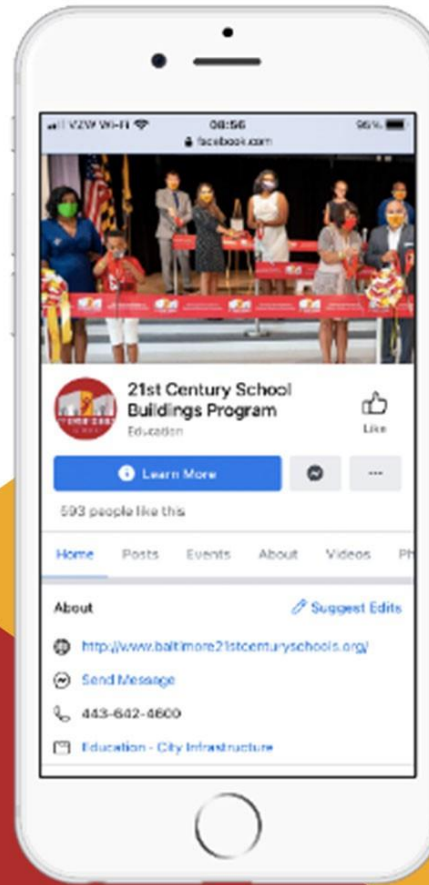
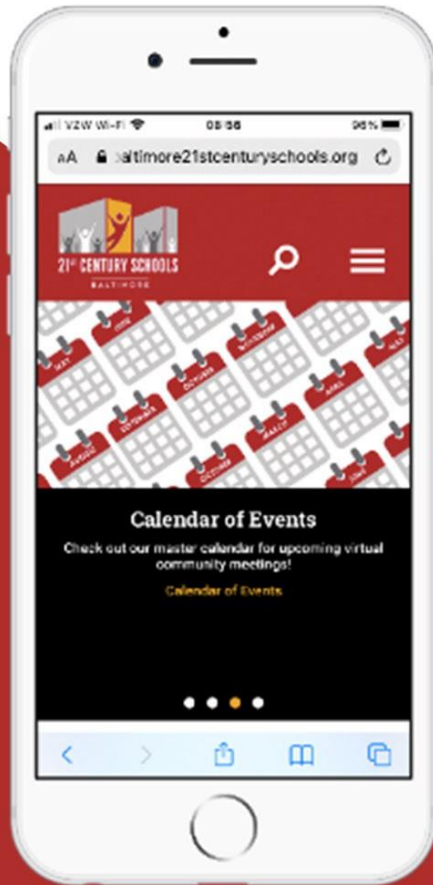


CR



Baltimore21stCenturySchools.org

FaceBook.com/
21stCenturySchoolBuildingsProgram



Questions?

Program Contacts

Senior Program Managers
Community & Engagement

Ivy D. McNeill IDMcNeill01@bcps.k12.md.us

Alicia Thomas AThomas03@bcps.k12.md.us

Director, Community
Engagement & Strategic
Partnerships TaMikka Sykes
TCSykes@bcps.k12.md.us

Program Information

21st Century School Buildings Program Office
(443) 642-4600



21stCSBaltimore



21stCenturySchoolBuildingsProgram



21stCSBaltimore

Thank You.

This presentation was brought to you by the 21st Century School Buildings Program.



Commodore John Rodgers E/MS
Community Meeting | Construction Update
January 29, 2026

Baltimore City Public Schools

200 East North Avenue
Baltimore MD 21202

www.baltimore21stcenturyschools.org

BALTIMORE CITY
PUBLIC SCHOOLS

