



Design
Collective

 SAMAHA

JOINT VENTURE

21st Century School Buildings Plan

SCHOOL Calvin Rodwell Elementary/Middle School

COMMUNITY MEETING Construction | March 5, 2019



Introductions

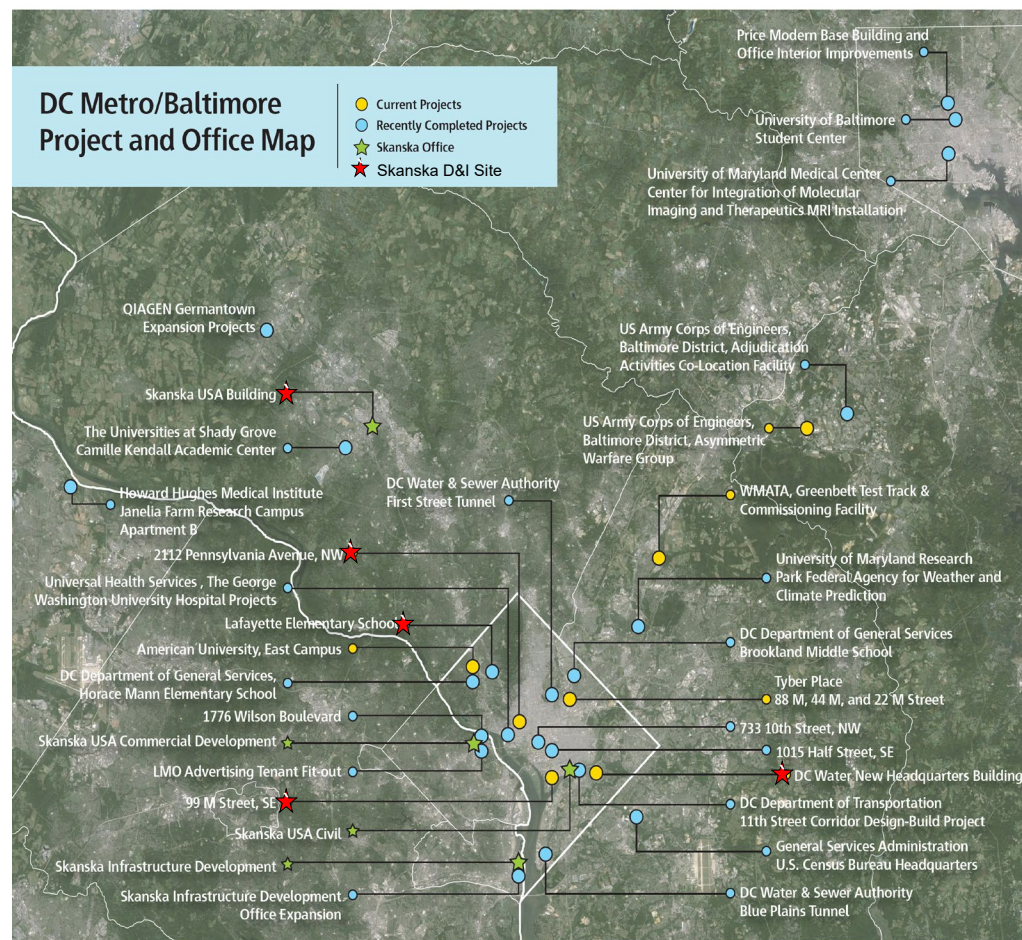
- **BCPS Team**
- **MSA Team**
- **Skanska Team**

Agenda

- **Project Scope**
- **Project schedule**
- **Logistics Plan**
- **Construction Progress**

SKANSKA USA Building

- Founded 1887 in Sweden
- Over 40 years in U.S. cities
- Nearly 11,000 U.S. employees
- Segments
 - Healthcare
 - Education
 - Mission Critical/data and operation centers
 - Government
 - Corporate offices
 - Life Sciences
 - Sports

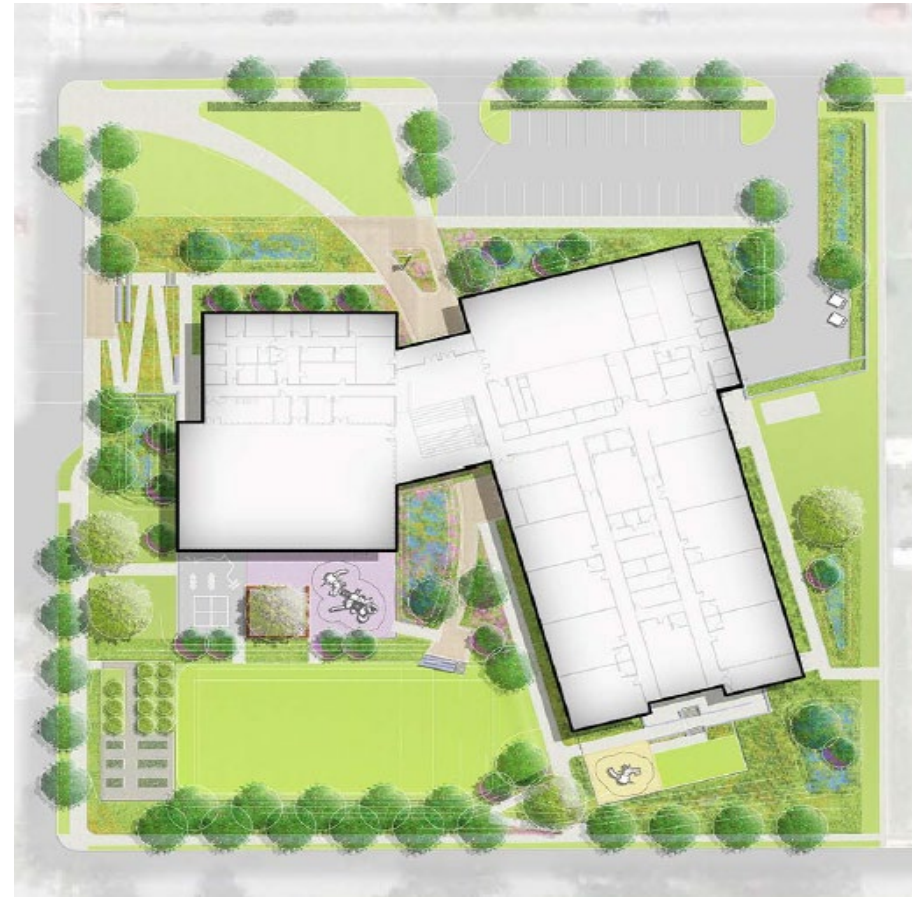


PROJECT SCOPE

Demolish Old Building



Construct New Building and Amenities



PROJECT SCOPE

- Four story brick building for classrooms
- Gymnasium and Fitness area
- Administration area
- Cafeteria and Kitchen
- Parking and sidewalks
- Playground and site amenities



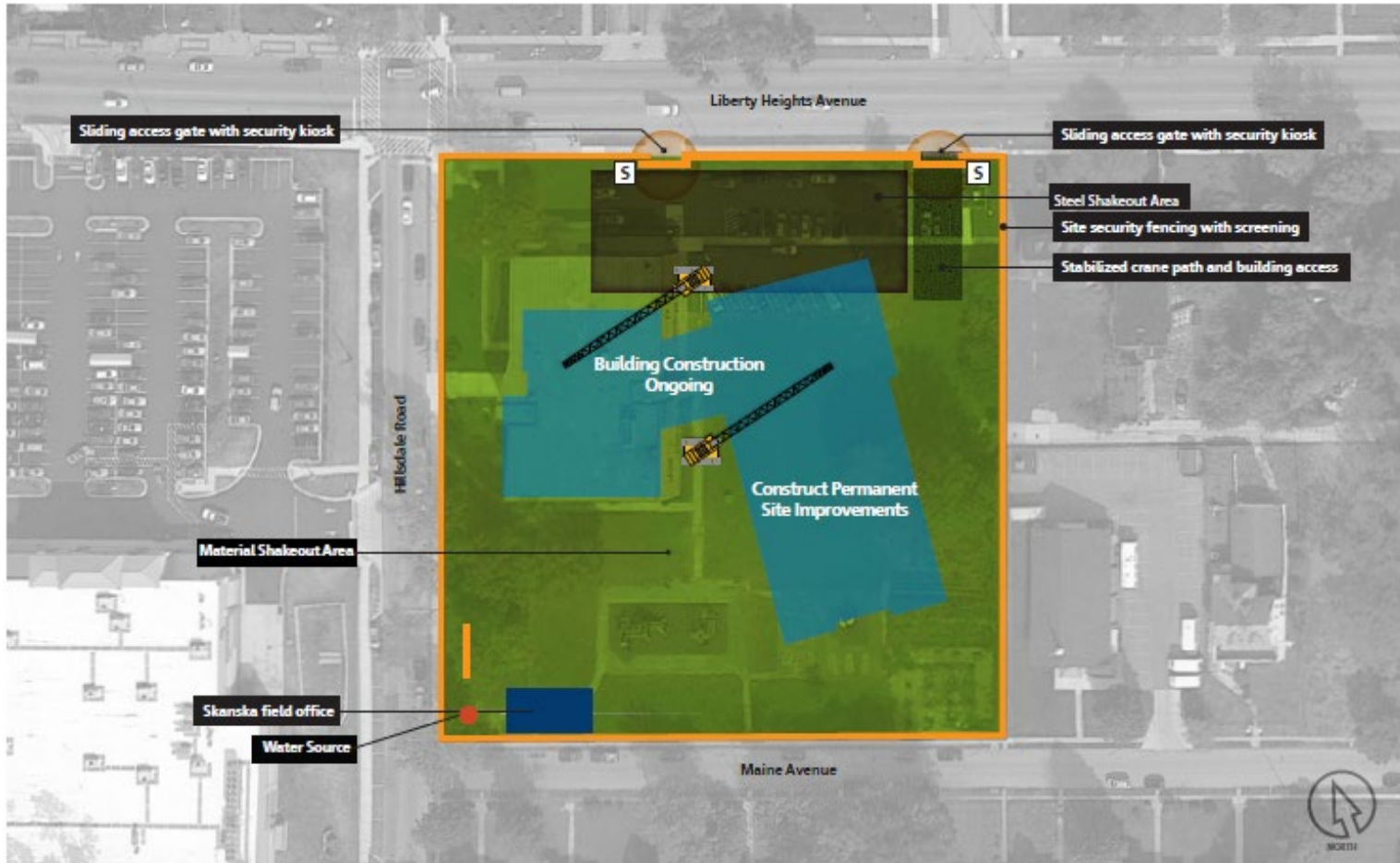
PROJECT SCHEDULE

Project major milestones

August 13, 2018	Mobilized to Site
October 2018	Demolition of Existing Building and Mass Excavation Completed
November 2018	Deep Foundation Installed
March 2019	Building Structure Completion
June 2019	Building Envelop/Enclosure
November 2019	Interior Fit-out
October 2019	Landscaping and Site Improvements
November 2019	Final Cleaning
December 2019	Project Completion

Project three month look ahead

Construction Activity	Mar-19	Apr-19	May-19
Concrete Foundation			
Hauling and Backfilling			
Steel Erection			
Masonry Block Walls			
Exterior Framing			
Building Enclosure			
Interior Fit-out			



Legend

- Site security fencing with screening
- Sliding access gate
- Security kiosk
- New building
- Stabilized crane path and building access
- Site improvements
- New parking area
- Skanska field office

Work Sequence 3

1. Building envelope construction is complete and work is ongoing in the building interior.
2. All crane access paths and laydown areas are removed and the site utilities are installed.
3. The new parking area is constructed on the north side of the building.

Maryland Stadium Authority
Calvin M. Rodwell Elementary/Middle School

Logistics Plan
Sequence 3: Building Construction Phase
September 2018 – August 2019

Scale: NTS



CALVIN RODWELL

CONSTRUCTION TRUCK TRAFFIC

- Dump trucks delivering RC6/gravel for backfill and hauling of soil from site
- Concrete trucks
- Flat bed trucks delivering steel, mechanical and electrical equipment
- Dump trucks delivering sand, blocks and bricks
- Dumpster truck bringing trash dumpsters and hauling of dumpsters from site - red dumpsters
- Trucks delivering drywall/insulation, doors, windows, roofing material, flooring, piping, electrical and other miscellaneous material

CALVIN RODWELL

CONSTRUCTION TRUCK TRAFFIC

- Trucks are anticipated to use Liberty Heights Avenue and access and leave the site using the Hillsdale or Liberty Heights entrances.
- Trucks are not allowed on Maine Avenue but some may be coming up Hillsdale. Companies have been advised to avoid using Hillsdale past the site entrance.

- Work hours
- Keep project site and surrounding area clean
- Control dust and mud
- Noise levels
- Site security and safety
- Flaggers at construction entrances

Care for Life

Injury-Free Environment (IFE)



- **During Work Hours Contact**
Daniel Garripoli – Skanska Superintendent
301-852-3661
daniel.garripoli@skanska.com
- **After Work Hours Contact**
Tim Cober – MSA Project Manager
410-218-0733
tcober@mdstad.com
- **21st Century School Buildings Contact**
Nicole Price – Director of Community & Public Relations
443-642-4600 (office) | 410-350-1023 (cell)
nprice@bcps.k12.md.us

