



21st Century School Buildings Plan

SCHOOL Calvin M. Rodwell Building (Grove Park & Calvin Rodwell Scholars)
COMMUNITY MEETING Final Design | May 2, 2018



Introductions

Leigh Golden Williams

Assistant Principal

New 21st Century School Building

Gladys Kenney

Transition Coordinator

Nicole Price

Community & Public Relations Director

21st Century School Buildings Program

City Schools

Alicia Thomas

Community & Public Relations Program

Coordinator

Meredith Sullivan

Architects

Design Collective

Agenda

Welcome & Introductions

Overview & Vision

Student Voice

A building for Grove Park and
Calvin Rodwell scholars

Investment in buildings, students and communities

Overall school revitalization project has three goals:

- (1) to transform student opportunities and achievement;
- (2) improve engagement and wellbeing of communities;
- (3) help revitalize neighborhoods and communities.

Calvin Rodwell Summary of Spaces

(6) Pre K and Kindergarten Classrooms	(1) Art rooms
(6) 1 st and 2 nd grade classrooms	(2) Music classrooms
(9) 3 rd , 4 th and 5 th grade classrooms	(1) Technology Lab
(9) 6 th , 7 th , and 8 th grade classrooms	(2) Flex classrooms
(6) Collaborative learning areas	Media Center/ Video Studio
(3) Special Education classrooms	Cafeteria
(1) Culinary Arts classrooms	Gymnasium
(2) Middle school science classrooms	Administrative/Student Services
(1) Elementary school science classroom	Community Space (including BCRP Spaces)

Stakeholder Voice

Values: What's Important

Improve mood
Reach diverse learners Community
Welcoming Technology
Learning anywhere

Planning



Planning





Design Goals

Connecting stakeholder voice

Design an organized plan for the building that best utilizes the existing site

Building Orientation for Maximum Efficiency



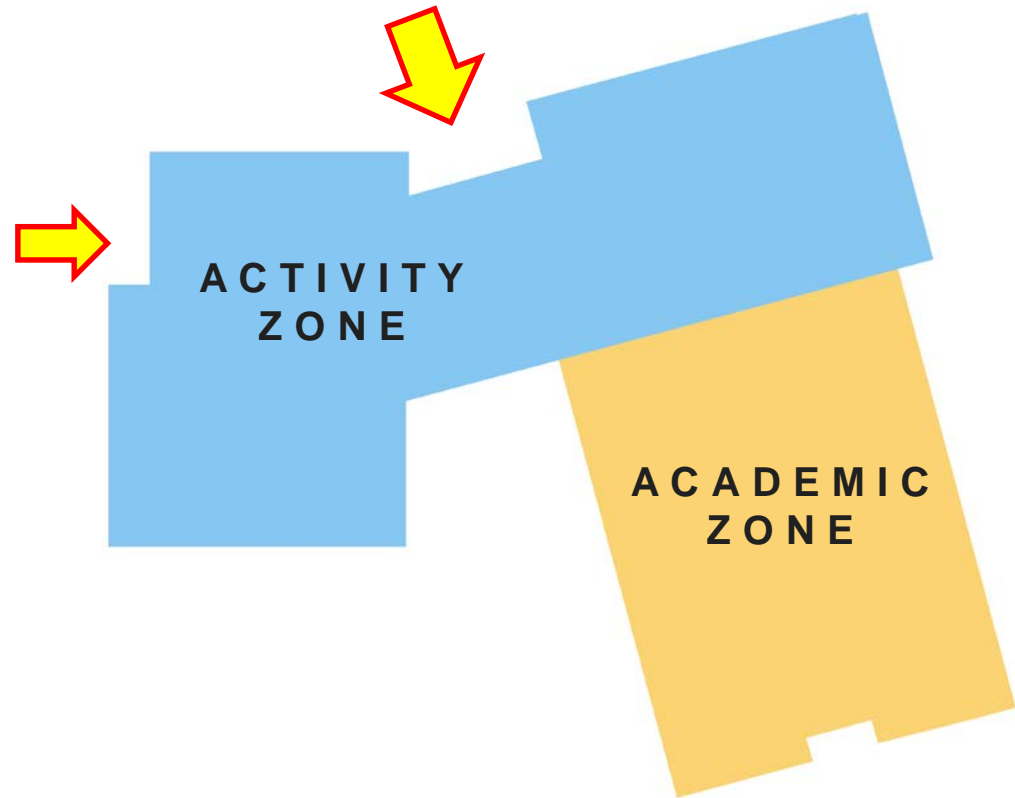
Daylight and Views for all Classroom and Learning Spaces

Design an organized plan for the building that best utilizes the existing site

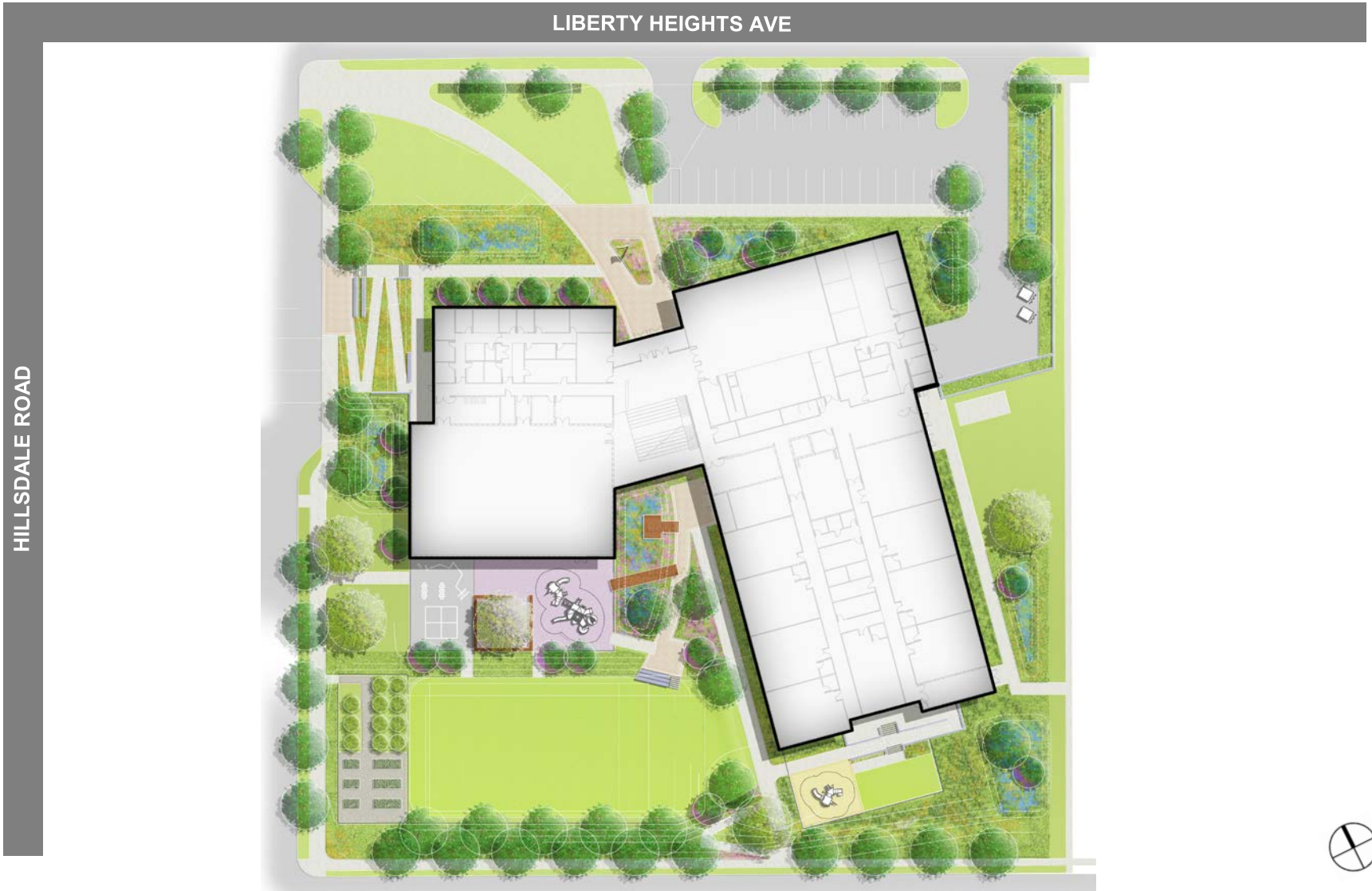
Strong Connection to the Community

Building Organization

- Administrative functions supervise main building entries
- New elementary & middle school classroom wing
- Middle school classrooms and science rooms located on the upper floor
- Separate the building into Activities and Academic zones to allow for secure control of building after hours
- Community space located in the activity zone



Site Plan



HILLSDALE ROAD



First Level Floor Plan

LIBERTY HEIGHTS AVE

MAIN ENTRY
SECONDARY ENTRY

HILLSDALE ROAD

PROGRAM LEGEND

- ADMINISTRATION
- BUILDING SERVICE
- COMMUNITY
- FOOD SERVICE
- GUIDANCE
- HEALTH SUITE
- MUSIC
- SPECIAL ED.
- SUPPORT/COLLABORATION
- TEACHING & LEARNING



Second Level Floor Plan

LIBERTY HEIGHTS AVE

HILLSDALE ROAD



PROGRAM LEGEND

- ADMINISTRATION
- BUILDING SERVICE
- MEDIA
- SCIENCE
- SPECIAL ED.
- SUPPORT/COLLABORATION
- TEACHING & LEARNING
- TECHNOLOGY ED.
- VISUAL ARTS

Third Level Floor Plan

LIBERTY HEIGHTS AVE

HILLSDALE ROAD



Building Entrance



West Classroom Elevation



View from Liberty Heights / Hillsdale Corner



Collaboration Space – Exterior



Collaboration Space – Interior



Collaboration Space – Interior



Questions

Social Media



Instagram

@21stCSBaltimore

Twitter

@21stCSBaltimore

Facebook

@21stCenturySchoolBuildingsProgram

Thank You!



This presentation is brought to you by the
21st Century School Buildings Program.

www.baltimore21stcenturyschools.org

21st Century School Buildings Program

Baltimore City Public Schools
200 East North Avenue Room 407-B
Baltimore MD 21202
(443) 642-4600

Cheri Vincent

Interim Executive Director, 21st Century Buildings Program
Baltimore City Public Schools

Gary McGuigan

Senior Vice President, Capital Development Division
Maryland Stadium Authority

James T. Smith, Jr.

Chief of Strategic Alliances
City of Baltimore

Robert Gorrell

Executive Director, Public School Construction Program
State of Maryland

BALTIMORE CITY
PUBLIC SCHOOLS

