



Design
Collective

 SAMAH
JOINT VENTURE

21st Century School Buildings Plan

SCHOOL Calvin Rodwell Elementary/Middle School
COMMUNITY MEETING Construction | Oct 23, 2019





Introductions and Agenda

Introductions

- **BCPS Team**
- **MSA Team**
- **Skanska Team**

Agenda

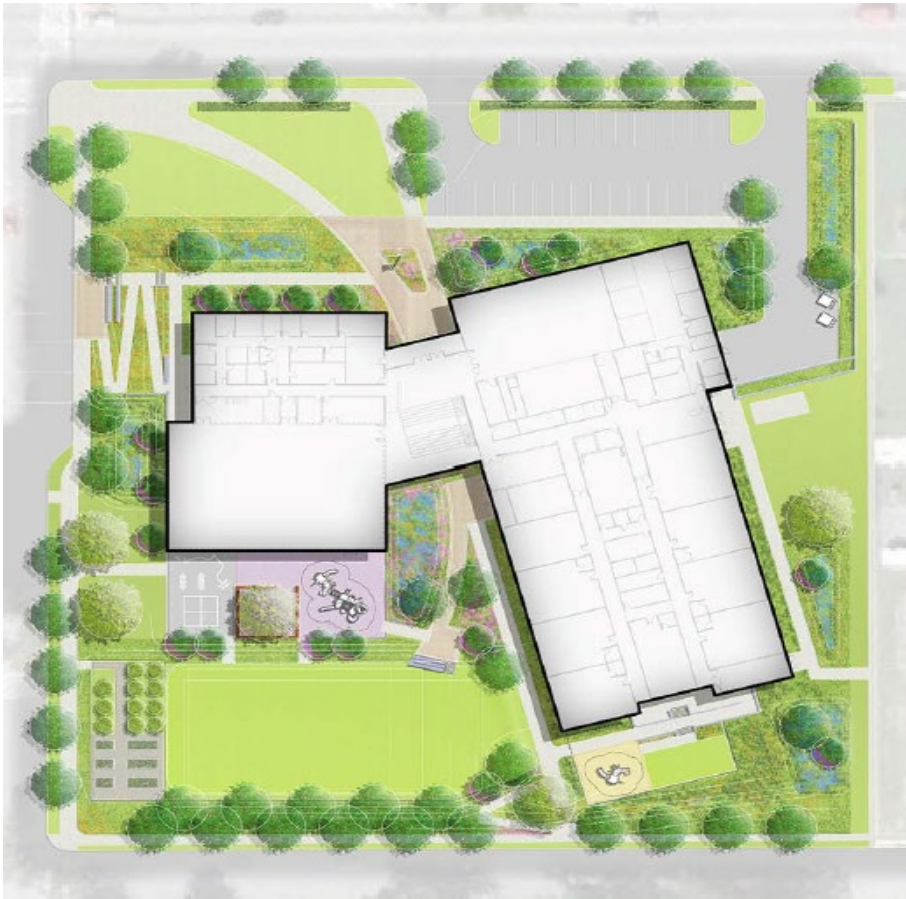
- **Project Scope**
- **Project schedule**
- **Construction Progress**

PROJECT SCOPE

Demolish Old Building



Construct New Building and Amenities



PROJECT SCOPE

- Four story brick building for classrooms
- Gymnasium and Fitness area
- Administration area
- Cafeteria and Kitchen
- Parking and sidewalks
- Playground and site amenities



PROJECT SCHEDULE

Project major milestones

August 13, 2018	Mobilized to Site
October 2018	Demolition of Existing Building and Mass Excavation Completed
November 2018	Deep Foundation Installed
March 2019	Building Structure Completed
August 2019	Building Envelop/Enclosure Completed
November 2019	Interior Fit-out Completion
December 2019	Landscaping and Site Improvements
December 2019	Final Cleaning
December 2019	Project Completion

Project three month look ahead

Construction Activity	Oct-19	Nov-19	Dec-19
Interior Fit-out			
Site Work			

CONSTRUCTION PROGRESS



CONSTRUCTION PROGRESS



CONSTRUCTION PROGRESS



CALVIN RODWELL

CONSTRUCTION TRUCK TRAFFIC

- Trucks delivering doors, cabinets, flooring, and other miscellaneous material
- Dump trucks delivering stone, asphalt, landscaping soil and plants
- Dumpster truck bringing trash dumpsters and hauling of dumpsters from site - red dumpsters

CALVIN RODWELL

CONSTRUCTION TRUCK TRAFFIC

- Trucks are anticipated to use Liberty Heights Avenue and access and leave the site using the Hillsdale or Liberty Heights entrances.
- Trucks are not allowed on Maine Avenue but some may be coming up Hillsdale. Companies have been advised to avoid using Hillsdale past the site entrance.

PROJECT REQUIREMENTS

- Work hours
- Keep project site and surrounding area clean
- Control dust and mud
- Noise levels
- Site security and safety
- Flaggers at construction entrances

Care for Life

Injury-Free Environment (IFE)



PROJECT CONTACTS

- **During Work Hours Contact**
Bill Lemley – Skanska Superintendent
301-672-7151
bill.lemley@skanska.com
- **After Work Hours Contact**
Tim Cober – MSA Project Manager
410-218-0733
tcober@mdstad.com
- **21st Century School Buildings Contact**
Alicia Thomas, Program Coordinator of Community & Public Relations
443-642-4600 (office) | 443-240-2359 (cell)
athomas03@bcps.k12.md.us

