



# 21<sup>st</sup> Century School Buildings Plan

**SCHOOL** Calvin M. Rodwell Elementary/Middle School

**COMMUNITY MEETING** Construction | July 24, 2019



### Introductions

- **City Schools Team**
- **MSA Team**
- **Skanska Team**

### Agenda

- **Project Scope**
- **Project schedule**
- **Logistics Plan**
- **Construction Progress**



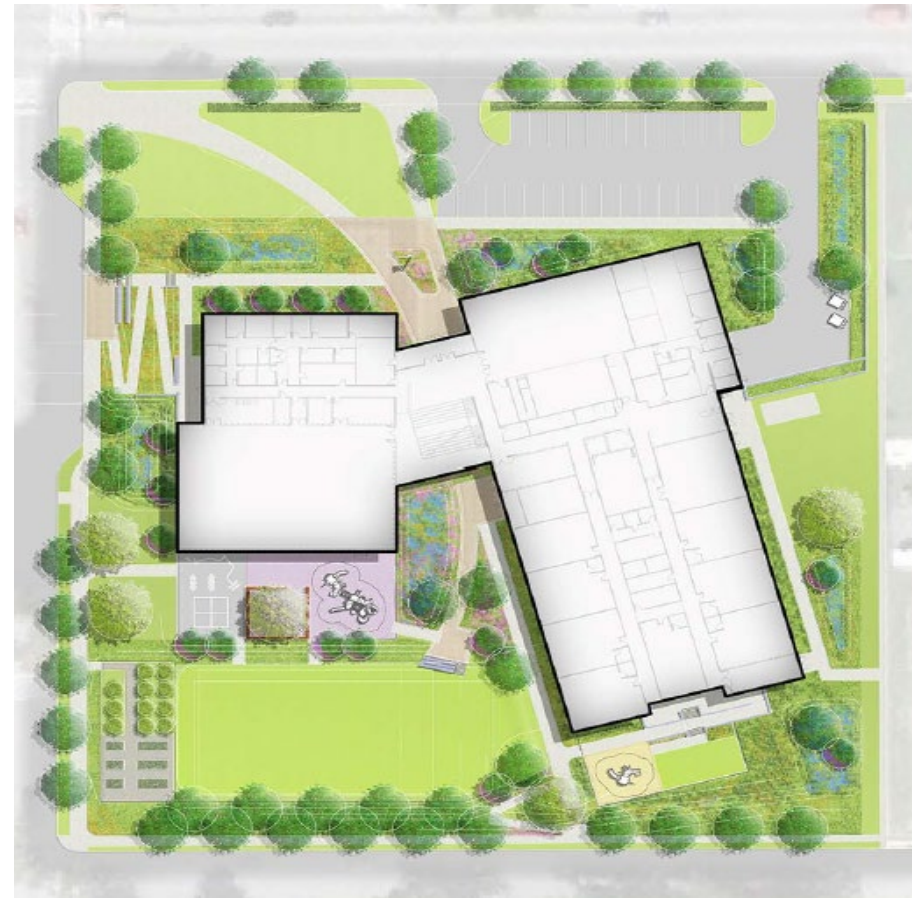


# PROJECT SCOPE

Demolish Old Building



Construct New Building and Amenities





# PROJECT SCOPE

- Four story brick building for classrooms
- Gymnasium and Fitness area
- Administration area
- Cafeteria and Kitchen
- Parking and sidewalks
- Playground and site amenities



# PROJECT SCHEDULE

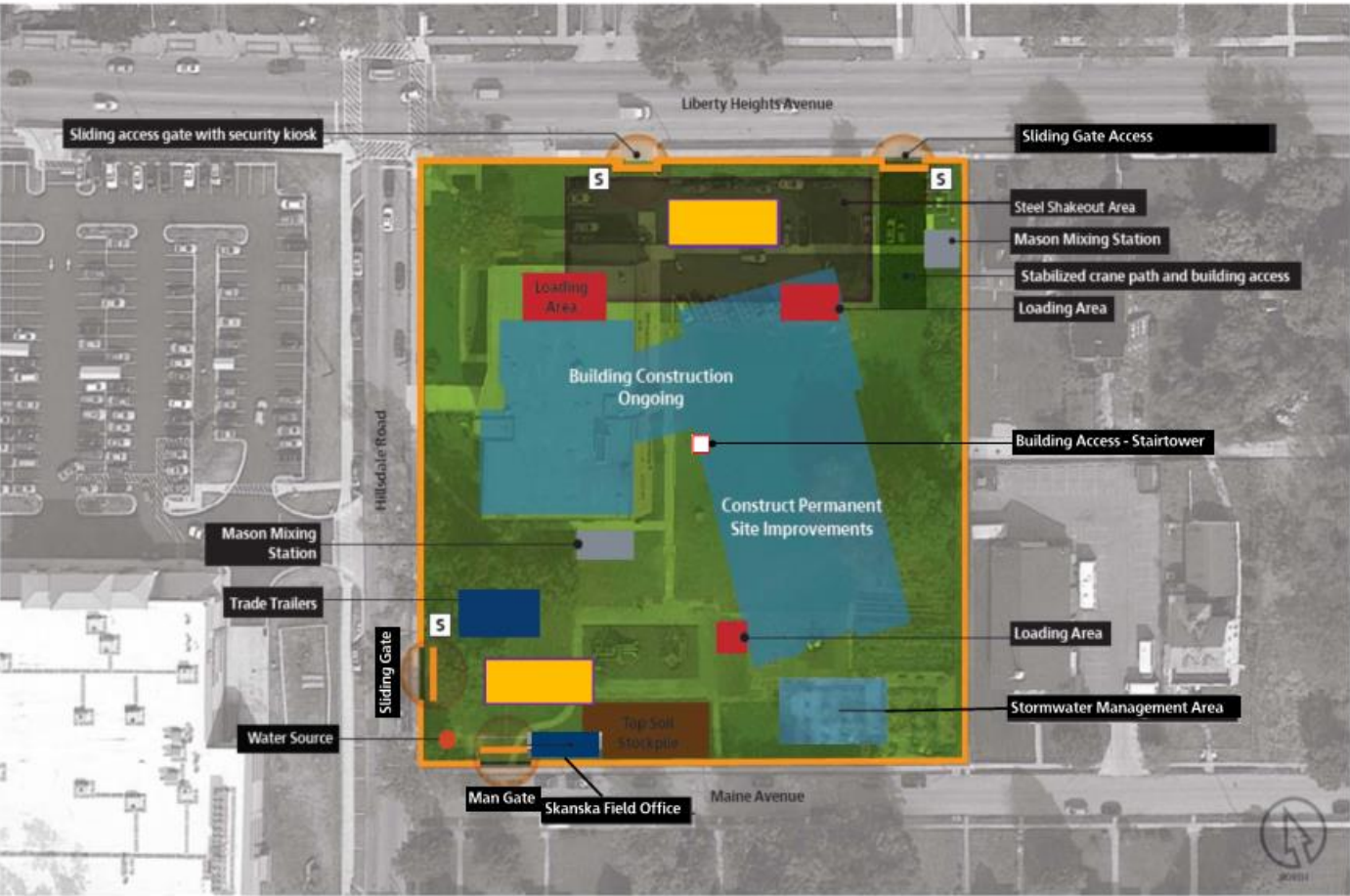
## Project major milestones

August 13, 2018	Mobilized to Site
October 2018	Demolition of Existing Building and Mass Excavation Completed
November 2018	Deep Foundation Installed
March 2019	Building Structure Completion
August 2019	Building Envelop/Enclosure
November 2019	Interior Fit-out
October 2019	Landscaping and Site Improvements
November 2019	Final Cleaning
December 2019	Project Completion

## Project three month look ahead

Construction Activity	Aug-19	Sep-19	Oct-19
Building Enclosure			
Interior Fit-out			
Site Work			

# LOGISTICS PLAN



## Legend

- Site security fencing with screening
- Sliding access gate
- Flaggers
- New building
- Stabilized crane path and building access
- Site improvements
- New parking area
- Skanska field office

## Muster Area

## Work Sequence 3

1. Building envelope construction is complete and work is ongoing in the building interior.
2. All crane access paths and laydown areas are removed and the site utilities are installed.
3. The new parking area is constructed on the north side of the building.

Maryland Stadium Authority  
Calvin M. Rodwell Elementary/Middle School

Logistics Plan  
Sequence 3: Building Construction Phase  
May 2019 - September 2019

Scale: NTS



# CONSTRUCTION PROGRESS





# CONSTRUCTION PROGRESS



# CALVIN RODWELL

## CONSTRUCTION TRUCK TRAFFIC

- Dump trucks delivering sand, blocks and bricks
- Flat bed trucks delivering mechanical and electrical equipment
- Dumpster truck bringing trash dumpsters and hauling of dumpsters from site - red dumpsters
- Trucks delivering drywall/insulation, doors, windows, roofing material, flooring, piping, electrical and other miscellaneous material



# CALVIN RODWELL

## CONSTRUCTION TRUCK TRAFFIC

- Trucks are anticipated to use Liberty Heights Avenue and access and leave the site using the Hillsdale or Liberty Heights entrances.
- Trucks are not allowed on Maine Avenue but some may be coming up Hillsdale. Companies have been advised to avoid using Hillsdale past the site entrance.

# PROJECT REQUIREMENTS

- Work hours
- Keep project site and surrounding area clean
- Control dust and mud
- Noise levels
- Site security and safety
- Flaggers at construction entrances



# Care for Life

## Injury-Free Environment (IFE)



# PROJECT CONTACTS

- During Work Hours Contact

Bill Lemley – Skanska Superintendent

301-672-7151

[bill.lemley@skanska.com](mailto:bill.lemley@skanska.com)

- After Work Hours Contact

Tim Cober – MSA Project Manager

410-218-0733

[tcober@mdstad.com](mailto:tcober@mdstad.com)

- 21st Century School Buildings Contact

Alicia Thomas, Program Coordinator of Community & Public Relations

443-642-4600 (office) | 443-240-2359 (cell)

[athomas03@bcps.k12.md.us](mailto:athomas03@bcps.k12.md.us)



