



# 21<sup>st</sup> Century School Buildings Program

SCHOOL Calverton Elementary/Middle School

COMMUNITY MEETING – Fall 2019



## Introductions

**Alicia Thomas**

Program Coordinator, Community &  
Public Relations  
Baltimore City Public Schools

**Joseph Mayzck**

Project Director  
Maryland Stadium Authority

**Ana Castro**

Principal  
JRS, Architects

**Ryan Fox**

Project Manager  
Whiting Turner Contracting Company

## Agenda

**Design Process**

- . Site Design
- . Floor Plans
- . Exterior Views and Landscape

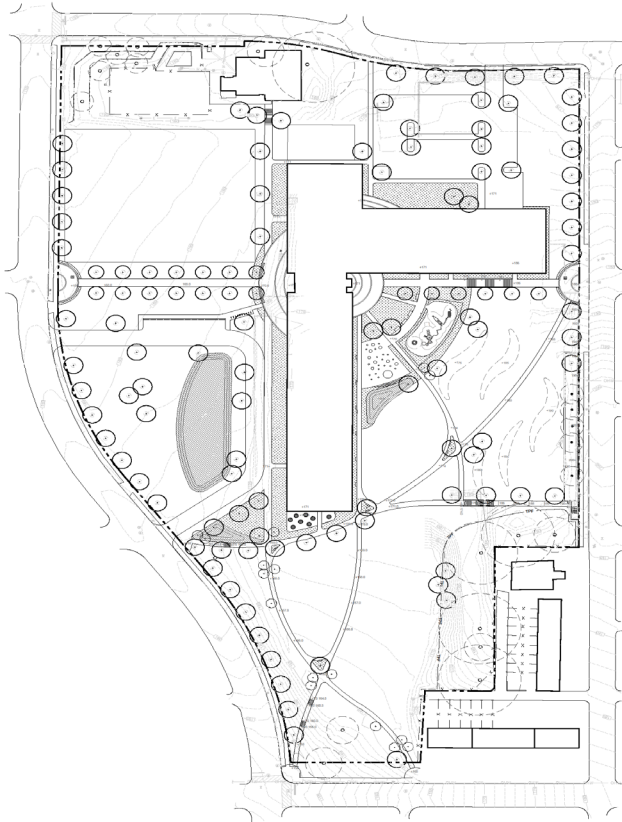
**Construction**

- . Schedule
- . Site Logistics
- . Hours
- . Job Opportunities

## Design Goals

- Design an organized plan for the building that best utilizes the existing site
- Maximize building efficiency
- Meet the requirements of the site-specific academic program
- Meet the goals of 21<sup>st</sup> Century education
- Address the concerns of the community and the administration

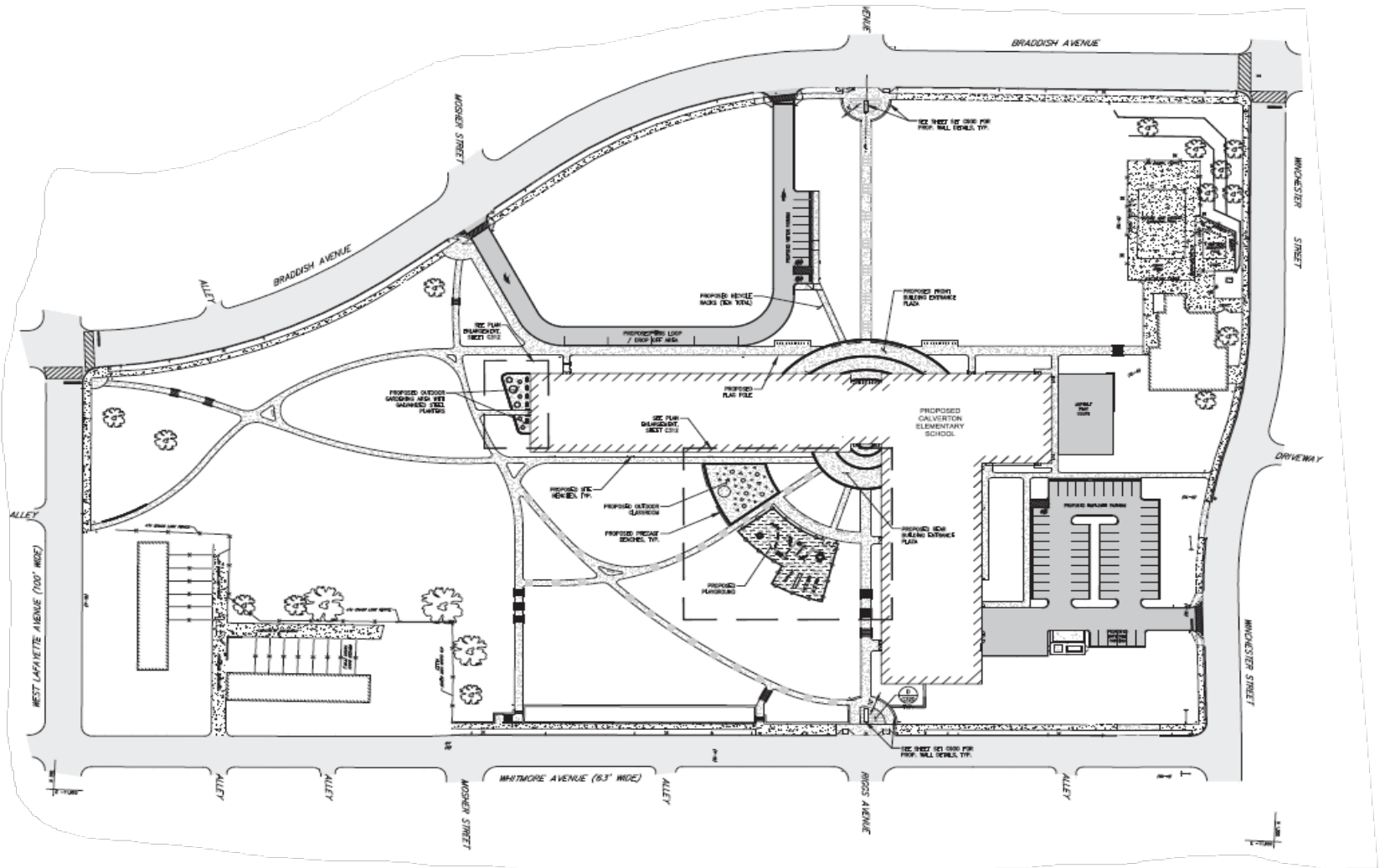
## Site Plan



<b>Existing Building</b>	265,000 SF
<b>NEW School Building</b>	121,000 SF

CALVERTON EMS  
SCALE: 1"=40'  
4/8/2019

## Design



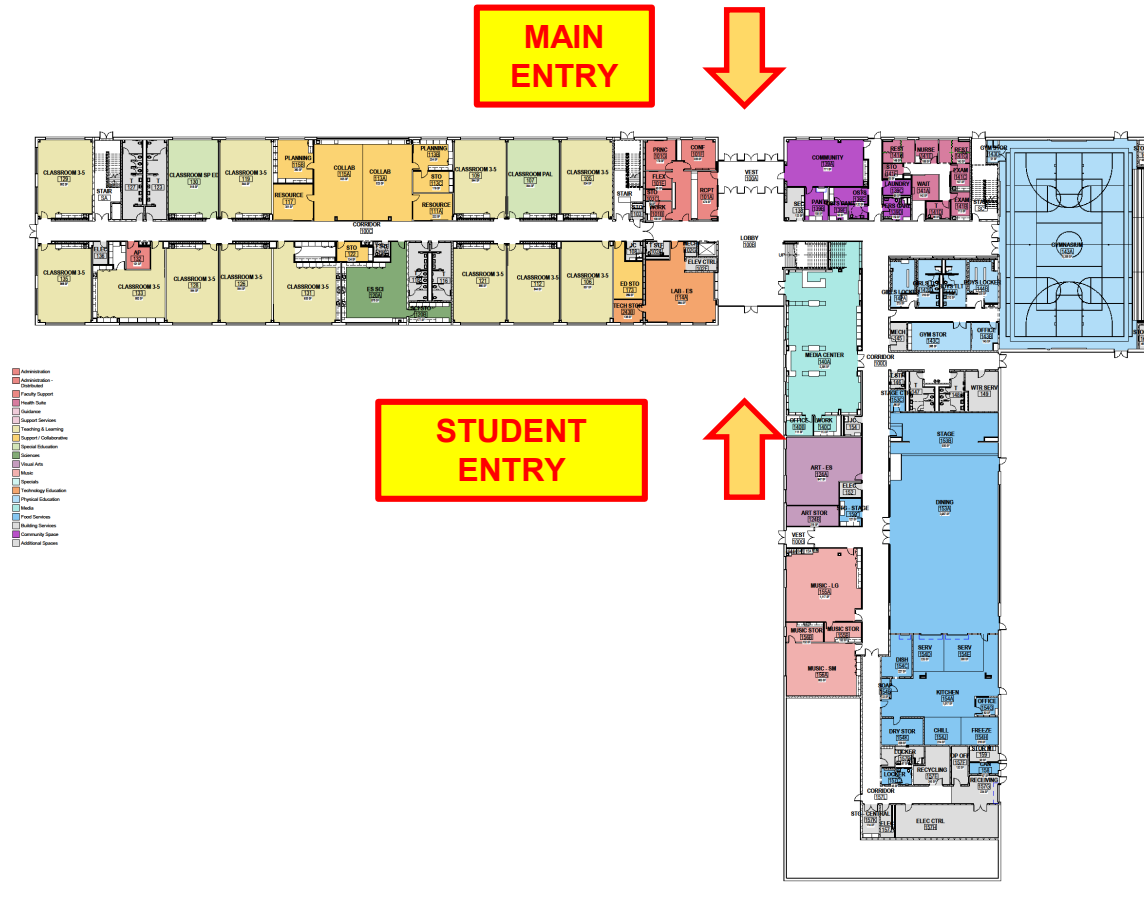
## Site Plan



# Building Organization

- Administrative Area at the Main Entrance
- Elementary School on the 1<sup>st</sup> Floor
- Middle School on the 2<sup>nd</sup> Floor
- Music Rooms in close proximity to stage
- Dedicated Community Space
- Multiple Science Labs and Collaborative Spaces

## First Floor Plan



OPTION 1 LEVEL 1  
GALVERTON ESMS  
07/10/10

JRS ARCHITECTS  
JRS ARCHITECTS  
JRS ARCHITECTS

07/10/10

## Second Floor Plan



OPTION 1 LEVEL 2

CALVERTON ESMS

01/14/19

JRS ARCHITECTS

300 North York Ave, Suite 100, Baltimore, MD 21201-4514 USA

01/14/19 11:14:30 AM





Main Entrance



Student Entrance





Lobby View Looking East

# Design



## Construction Schedule

- Mobilize for Demolition – October 31, 2019
- Demolition Complete – March 2020
- Start of Construction – April 2020
- Construction Completion – July 2021
- Start of School – September 2021

## Basic Overview

- Standard Hours of Operation: 6AM – 6PM

\* The Standard Hours of Operation have been updated since this presentation was presented on Nov. 6th 2019. Standard Hours of Operation are currently 7 a.m. - 5 p.m. as of April 16th 2020.

- Trucking/Delivery Plan: Coordinated schedule – W. Franklin Street to Braddish Avenue
- Rodent/Pest Control in 3 Phases: Prior to demolition, During demolition/construction, and Pre-occupancy



# Construction



# Questions?

## CONTACTS

Alicia Thomas

[Athomas03@bcps.k12.md.us](mailto:Athomas03@bcps.k12.md.us)

**21<sup>st</sup> Century School Buildings  
Program Office**  
(443) 642-4600

**[www.baltimore21stcenturyschools.org](http://www.baltimore21stcenturyschools.org)**



21stCSBaltimore



21stCenturySchoolBuildingsProgram



21stCSBaltimore

Thank You!



This presentation is brought to you by the  
21<sup>st</sup> Century School Buildings Program.

**[www.baltimore21stcenturyschools.org](http://www.baltimore21stcenturyschools.org)**

**21<sup>st</sup> Century School Buildings Program**

Baltimore City Public Schools  
200 East North Avenue Room 407-B  
Baltimore MD 21202  
(443) 642-4600

**Dorothy Hellman**

Executive Director, 21st Century Buildings Program  
Baltimore City Public Schools

**Gary McGuigan**

Senior Vice President, Capital Projects Development Group  
Maryland Stadium Authority

**Tisha Edwards**

Director, Mayor's Office of Children & Family Success  
City of Baltimore

**Robert Gorrell**

Executive Director, Public School Construction Program  
State of Maryland

BALTIMORE CITY  
PUBLIC SCHOOLS

