



## 21<sup>st</sup> Century School Buildings Program

Calverton Elementary/Middle School

**COMMUNITY MEETING** – November 11, 2020

BALTIMORE CITY  
PUBLIC SCHOOLS



## Introductions

**Renee Stainrod**

[rstainrod@bcps.k12.md.us](mailto:rstainrod@bcps.k12.md.us)

Manager, Community & Public Relations  
21<sup>st</sup> Century School Buildings Program

**Alicia Thomas**

[athomas@bcps.k12.md.us](mailto:athomas@bcps.k12.md.us)

Sr. Program Coordinator, Community & Public Relations  
21<sup>st</sup> Century School Buildings Program

**Joseph Mayzck**

Project Director  
Maryland Stadium Authority

**Chad Carter**

Assistant Project Manager  
Maryland Stadium Authority

**John Srygley**

Principal  
JRS, Architects

**Ryan Fox**

Project Manager  
Whiting Turner Contracting Company

## Agenda

- . **Introductions and Agenda**
- . **Design**
  - . Goals
  - . Site Plan
  - . Building Organization
  - . Floor Plans
  - . Exterior Views and Landscape
- . **Construction**
  - . Schedule
  - . Overview
  - . Trucking Routes
  - . Jobsite Security
  - . Building Progress

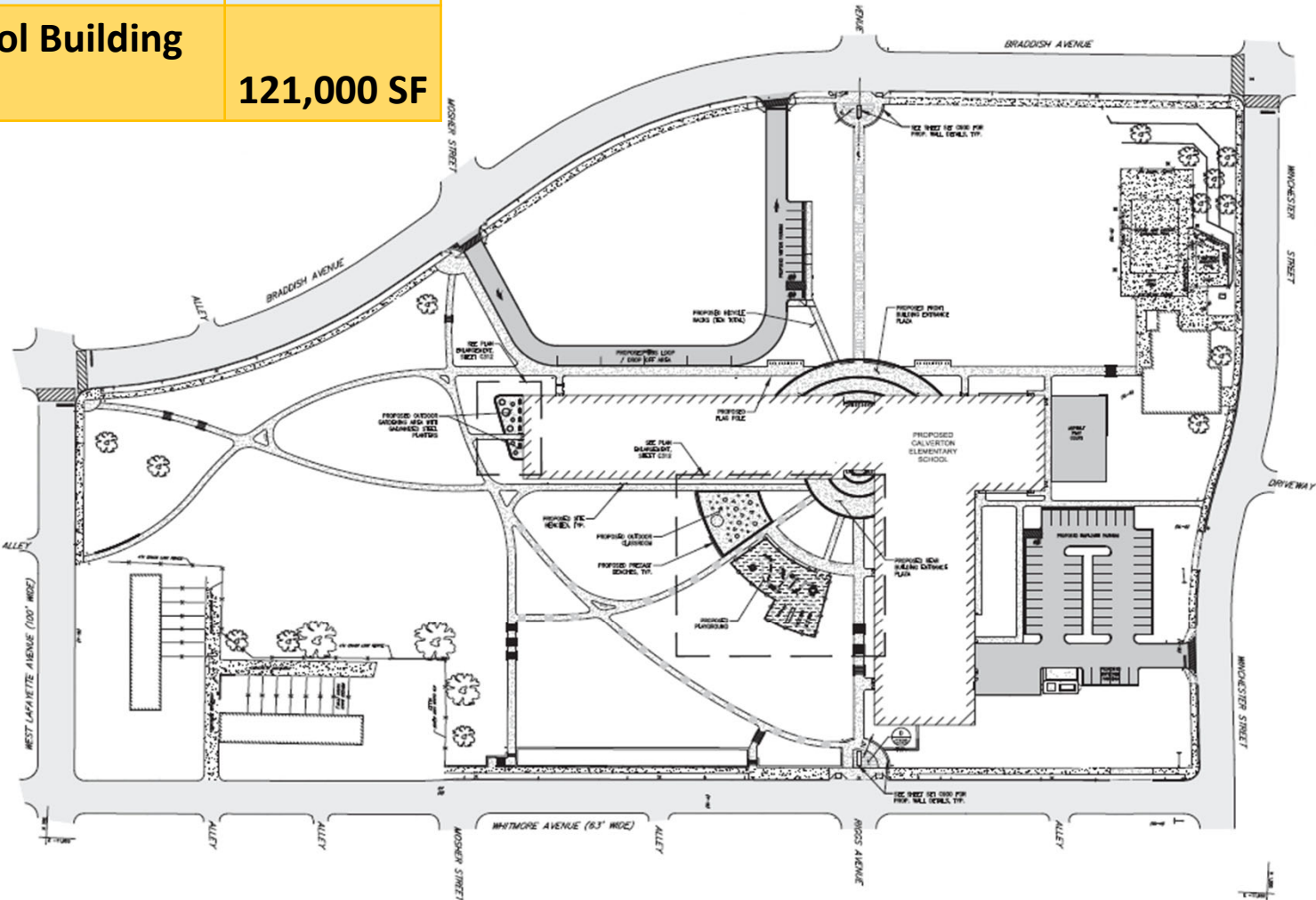
## Design Goals

- Design an organized plan for the building that best utilizes the existing site
- Maximize building efficiency
- Meet the requirements of the site-specific academic program
- Meet the goals of 21<sup>st</sup> century education
- Address the concerns of the community and the administration

## DESIGN

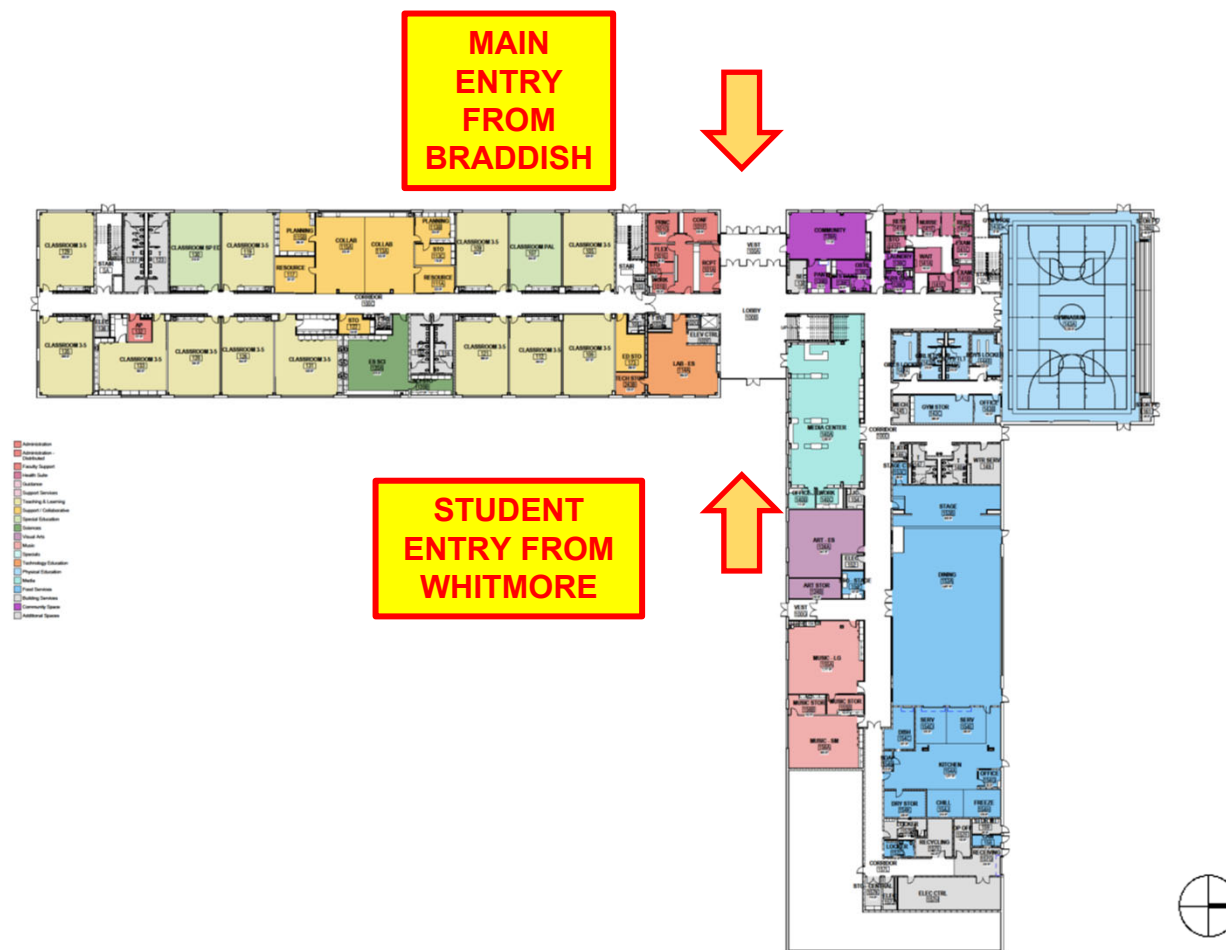
## Site Plan

<b>Existing Building</b>	265,000 SF
<b>NEW School Building</b>	<b>121,000 SF</b>



## Building Organization

- Administrative area at main entrance
- Elementary school on the 1<sup>st</sup> Floor
- Middle school on the 2<sup>nd</sup> Floor
- Music rooms in close proximity to stage
- Dedicated community space
- Multiple science labs and collaborative spaces



OPTION 1 LEVEL 1  
CALVERTON ES/MS

JRS ARCHITECTS  
ARCHITECTS





OPTION 1 LEVEL 2  
CALVERTON ELEM  
SCALE

JRS ARCHITECTS  
JRS ARCHITECTS  
JRS ARCHITECTS









## Schedule

- Mobilize for Demolition – Oct. 31, 2019
- Demolition Complete – March 2020
- Start of Construction – April 2020
- Construction Completion – July 2021
- Start of School – September 2021

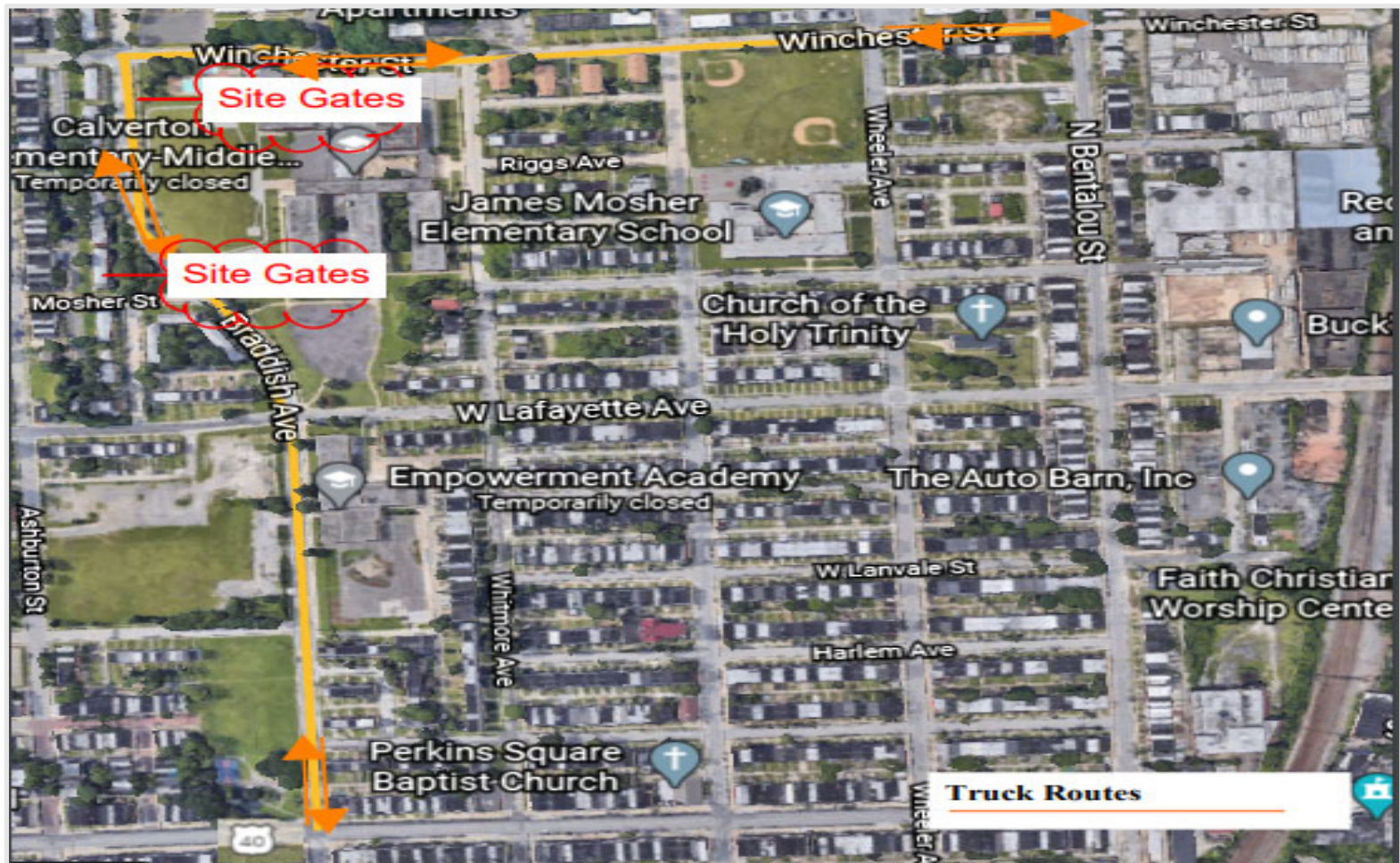
## Construction Overview

- Standard Hours of Operation 7AM – 5PM  
(weekends and off hours work as necessary)
- Trucking/Delivery Plan – Coordinated schedule  
W. Franklin St. to Braddish Ave. or Winchester St. to  
Monroe St. (revised April 2020)
- Rodent/Pest Control – 3 Phases
  1. Prior to demolition
  2. During demolition/construction
  3. Pre-occupancy



## CONSTRUCTION

## Revised Trucking Routes



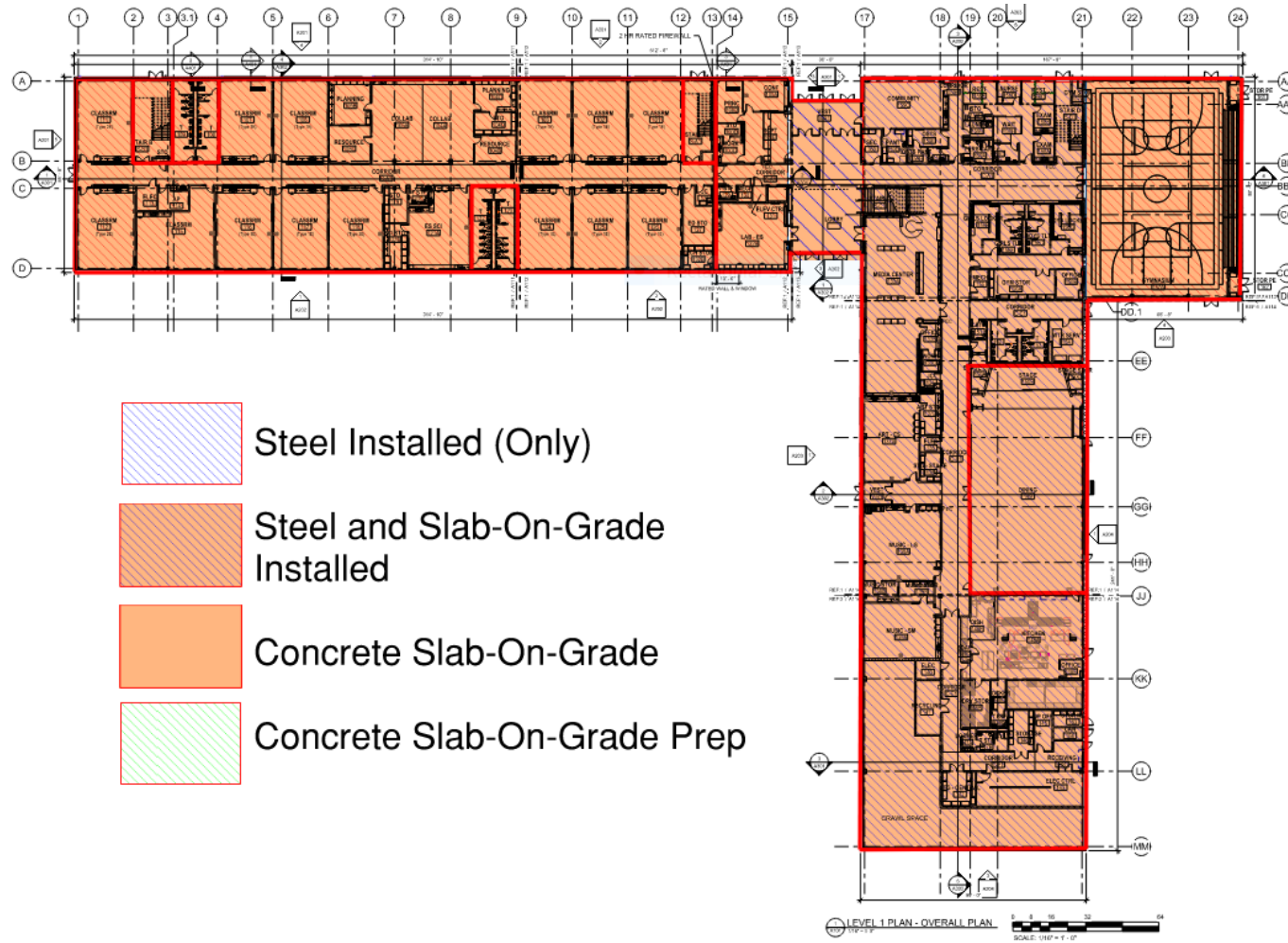


- The construction site has safety/security fencing around the entire perimeter for the duration of construction.
- The jobsite is monitored 24/7 by security cameras and motion detection systems.



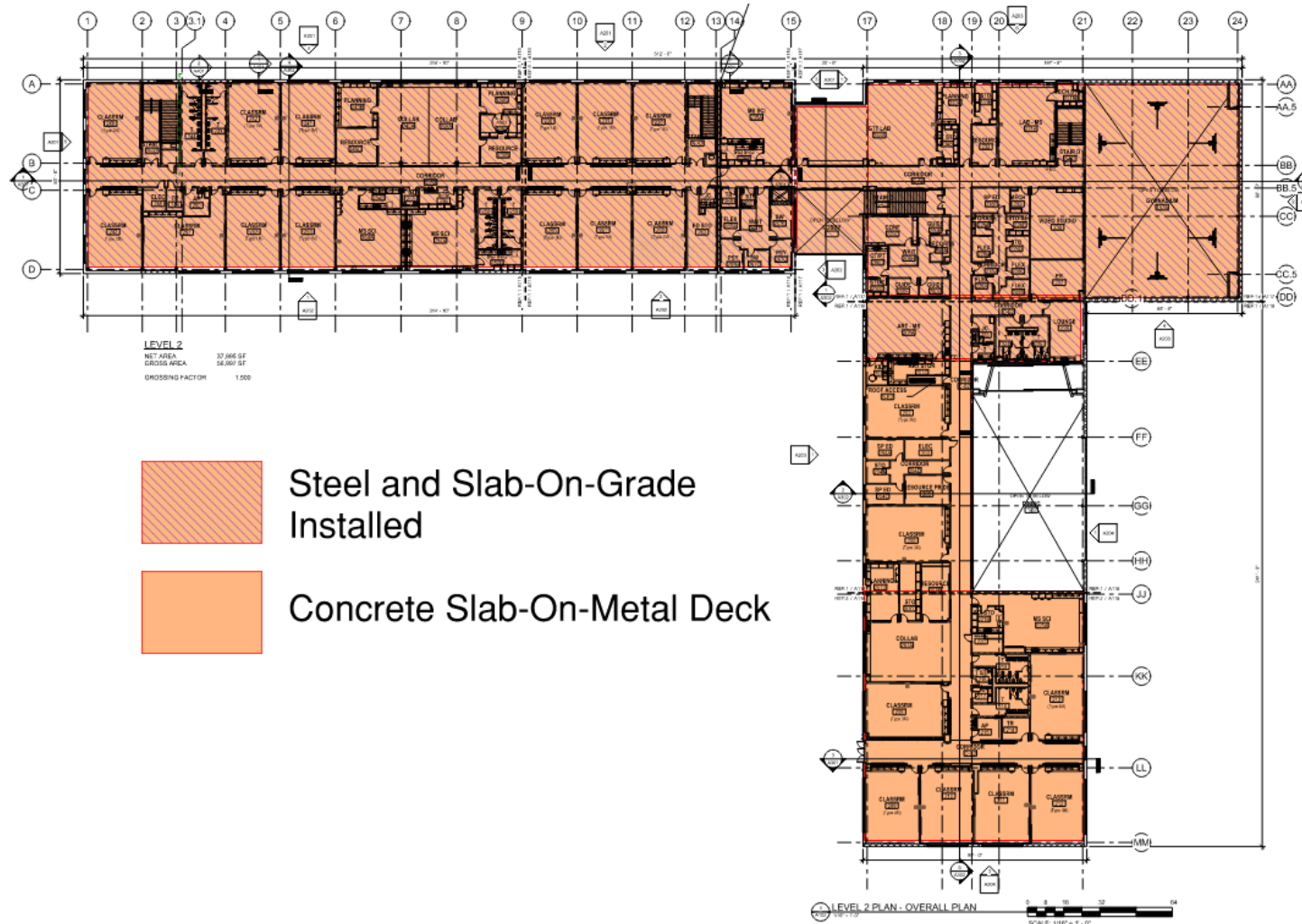
# CONSTRUCTION

## Building Progress Plan – 1<sup>st</sup> Level



## CONSTRUCTION Building Progress Plan – 2nd Level

## CONSTRUCTION Building Progress Plan – 2nd Level



East Side of Wing A South/North



Taken on September 21, 2020

West Side of Wing A South/North



Taken on September 21, 2020



## CONSTRUCTION

### Wing A South/North – West Side



Taken on November 6, 2020



## CONSTRUCTION

### Wing A South/North – East Side



Taken on November 6, 2020

## CONSTRUCTION

### Wing A North – 2<sup>nd</sup> Level Concrete Pour





## CONSTRUCTION

### Wing B – Final Slab on Grade Pours

Wing B East & Center



Poured on September 15, 2020

Wing B West



Poured on September 25, 2020

1<sup>st</sup> level steel at Café/Kitchen Area



Taken September 21, 2020



Taken October 1, 2020



## CONSTRUCTION

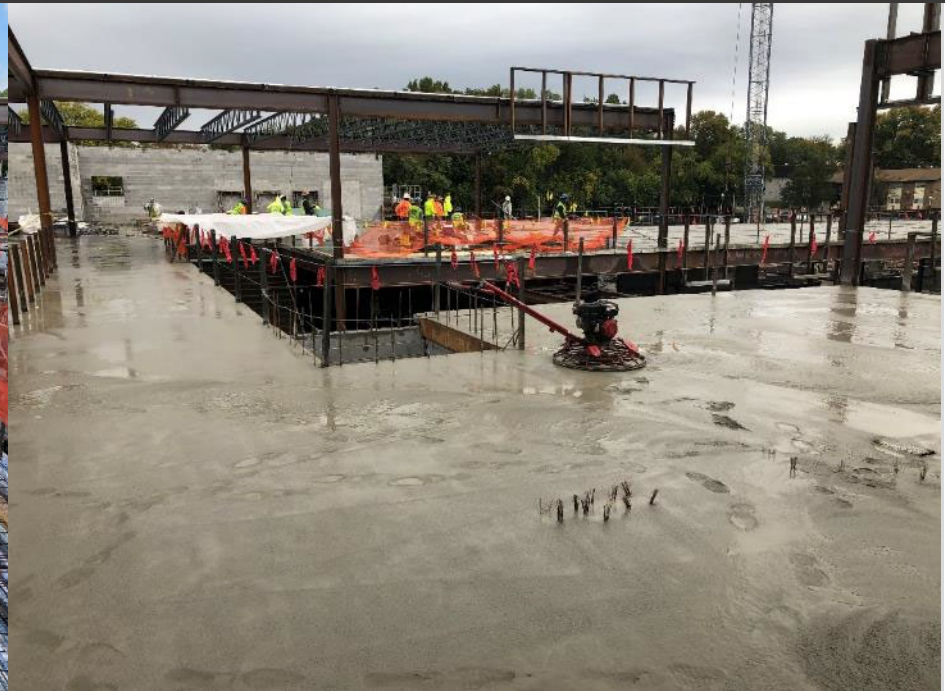
### Wing B – West & Center – 2<sup>nd</sup> Level Slab Pour

Wing B West



Taken October 2, 2020

Wing B Center



Taken November 2, 2020



## CONSTRUCTION

### Wing B – Center & East – 2<sup>nd</sup> Level Slab Pour

2<sup>nd</sup> Level Metal Decking Install



Taken October 19, 2020

Wing B East – 2<sup>nd</sup> Level Concrete Slab Pour



Taken November 2, 2020

## CONSTRUCTION

### Wing B Center & East – Masonry Walls



Taken on November 6, 2020





Taken on November 6, 2020

## CONSTRUCTION

### Wing B Center/East & Gym



## CONSTRUCTION

### Wing B – Center – Stage & Café

Stage Area

Kitchen & Café Area





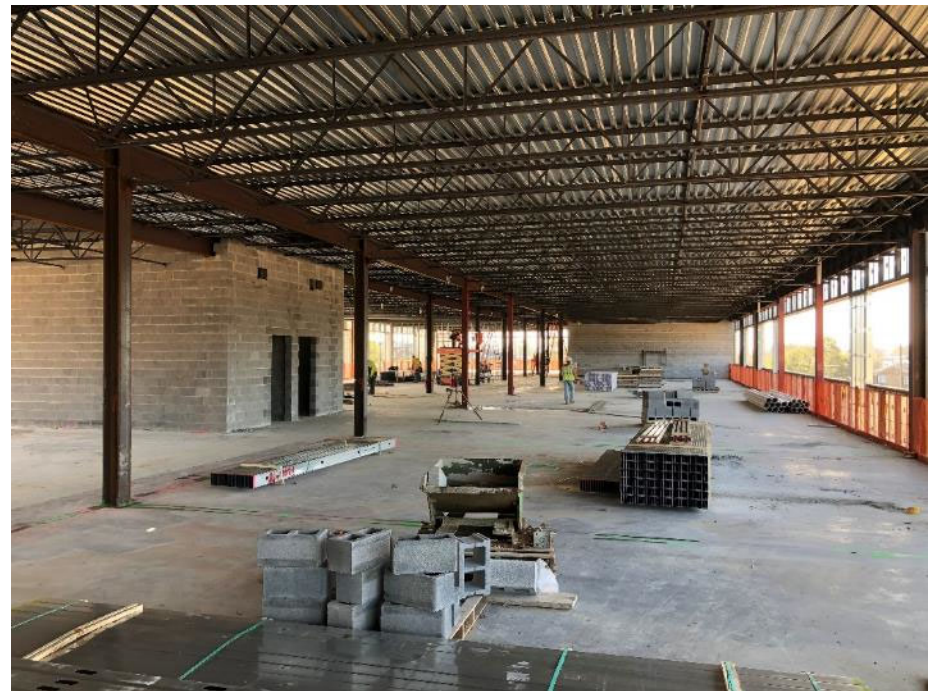
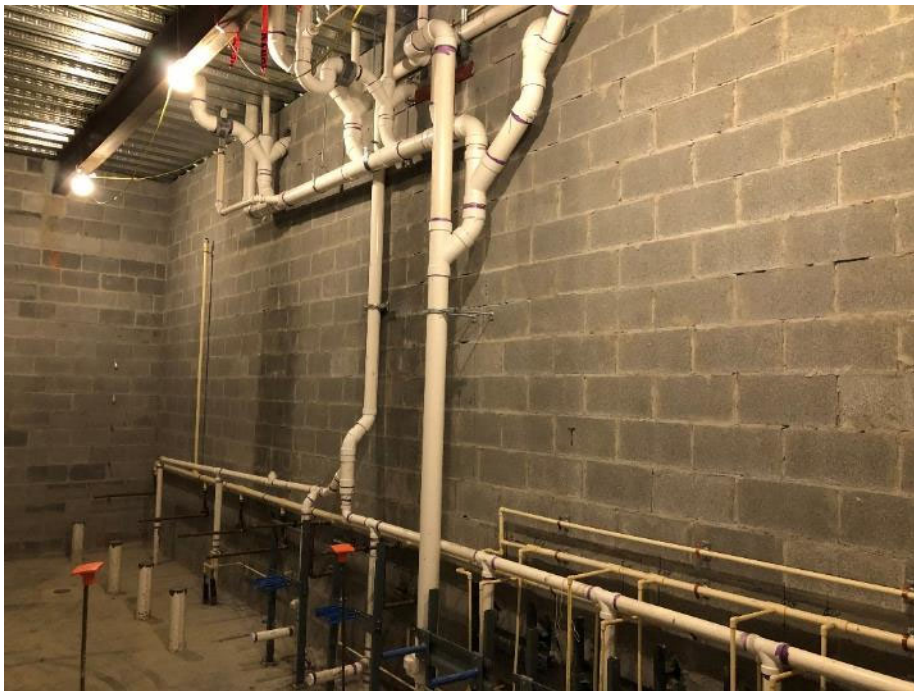
## CONSTRUCTION

### Wing A South/North – Interior Framing & Rough-ins



## CONSTRUCTION

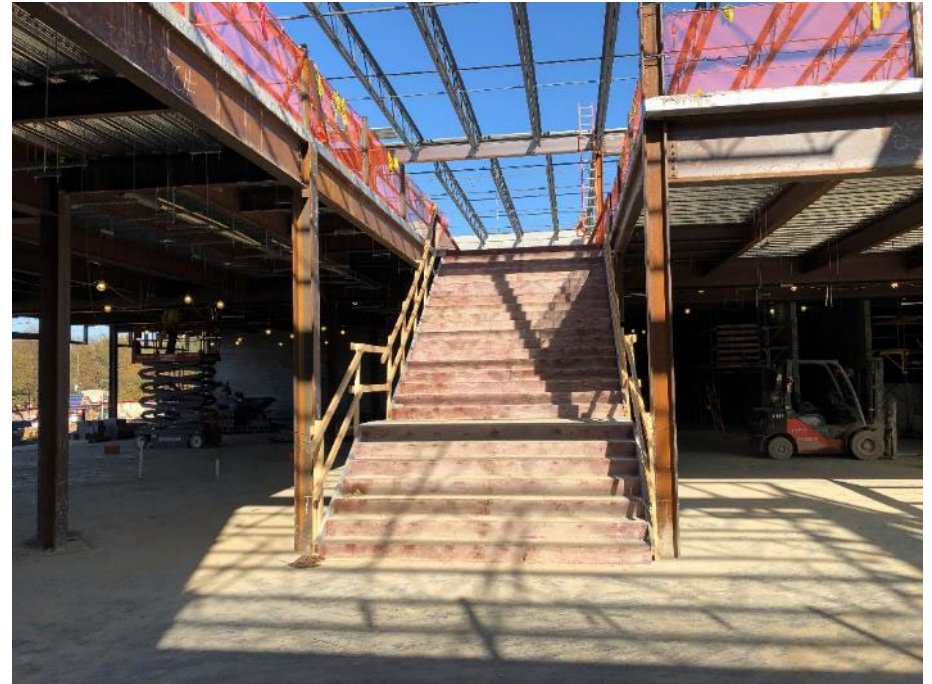
### Wing A – Plumbing Rough-ins & 2<sup>nd</sup> Level Layout





## CONSTRUCTION

### Wing B – Main Lobby Stairwell & Elevator Shaft





## CONSTRUCTION

### Wing B – Kitchen & Gym Office Area



## CONSTRUCTION

### Gymnasium Metal Decking



# Questions?

## CONTACTS

**Alicia Thomas**  
Sr. Program Coordinator  
[Athomas03@bcps.k12.md.us](mailto:Athomas03@bcps.k12.md.us)

**Renee Stainrod**  
Engagement & Public Relations Manager  
[rastainrod@bcps.k12.md.us](mailto:rastainrod@bcps.k12.md.us)

**21<sup>st</sup> Century School Buildings**  
Program Office  
(443) 642-4600

**[www.baltimore21stcenturyschools.org](http://www.baltimore21stcenturyschools.org)**



**21stCSBaltimore**



**21stCenturySchoolBuildingsProgram**



**21stCSBaltimore**



Thank You!



This presentation is brought to you by the  
21<sup>st</sup> Century School Buildings Program.

[www.baltimore21stcenturyschools.org](http://www.baltimore21stcenturyschools.org)

**21<sup>st</sup> Century School Buildings Program**

Baltimore City Public Schools  
200 East North Avenue Room 407-B  
Baltimore MD 21202  
(443) 642-4600

**Dorothy Hellman**

Executive Director, 21<sup>st</sup> Century School Buildings Program  
Baltimore City Public Schools

**Gary McGuigan**

Senior Vice President, Capital Projects Development Group  
Maryland Stadium Authority

**Tisha Edwards**

Director, Mayor's Office of Children & Family Success  
City of Baltimore

**Robert Gorrell**

Executive Director, Public School Construction Program  
State of Maryland

