



## 21<sup>st</sup> Century School Buildings Program

Calverton Elementary/Middle School

**CONSTRUCTION UPDATE MEETING – April 21, 2021**

BALTIMORE CITY  
PUBLIC SCHOOLS



**Introductions****Renee Stainrod**

Manager, Community & Public Relations  
21<sup>st</sup> Century School Buildings Program

**Alicia Thomas**

Sr. Program Coordinator, Community & Public Relations  
21<sup>st</sup> Century School Buildings Program

**Joseph Mayzck**

Project Director  
Maryland Stadium Authority

**Chad Carter**

Assistant Project Manager  
Maryland Stadium Authority

**John Srygley**

Principal  
JRS, Architects

**Ryan Fox**

Project Manager  
Whiting Turner Contracting Company

**Agenda**

- . **Introductions and Agenda**
- . **Design**
  - . Goals
  - . Site Plan
  - . Building Organization
  - . Floor Plans
  - . Exterior Views and Landscape
- . **Construction**
  - . Schedule
  - . Overview
  - . Trucking Routes
  - . Jobsite Security
  - . Building Progress



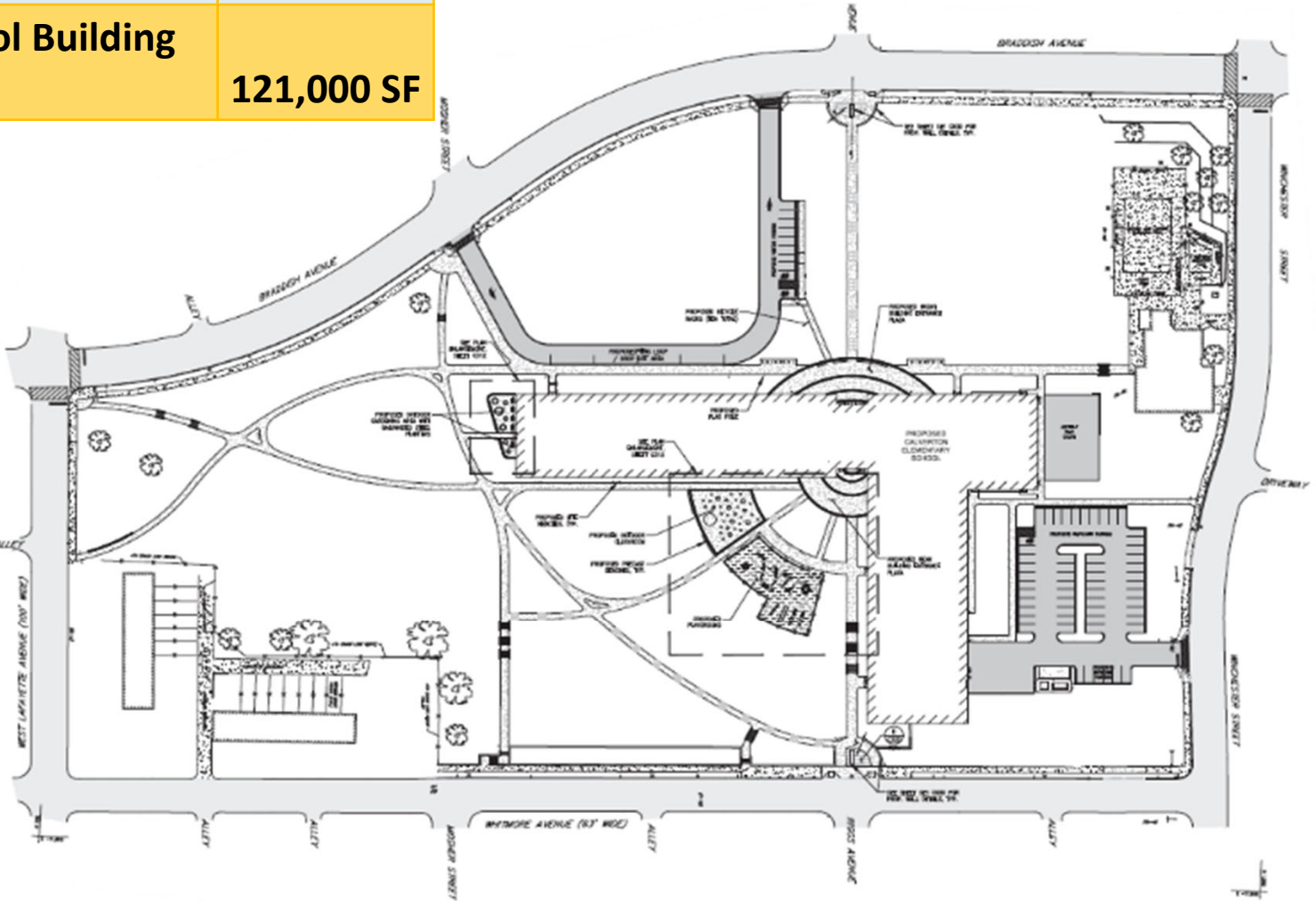
## Design Goals

- Design an organized plan for the building that best utilizes the existing site
- Maximize building efficiency
- Meet the requirements of the site-specific academic program
- Meet the goals of 21<sup>st</sup> century education
- Address the concerns of the community and the administration

## DESIGN

## Site Plan

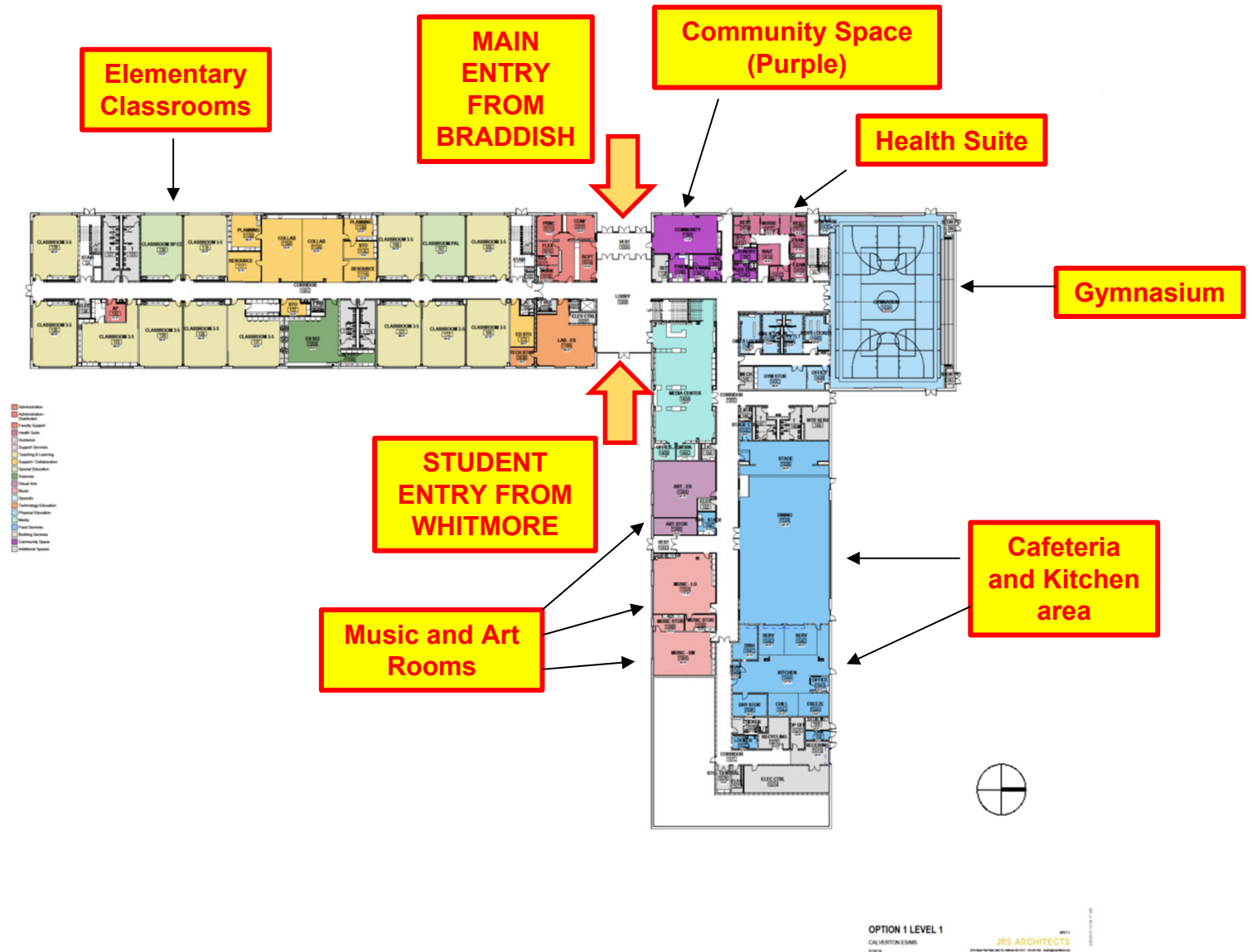
<b>Existing Building</b>	265,000 SF
<b>NEW School Building</b>	<b>121,000 SF</b>

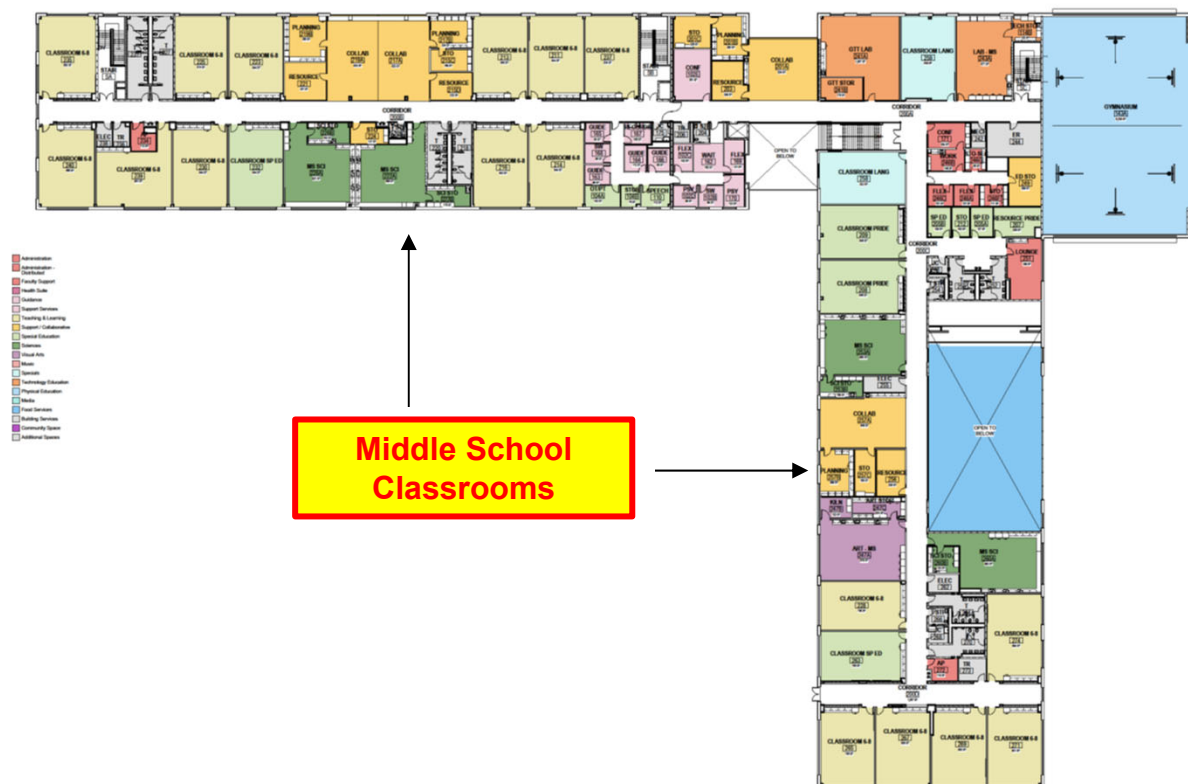




## Building Organization

- Administrative area at main entrance
- Elementary school on the 1<sup>st</sup> Floor
- Middle school on the 2<sup>nd</sup> Floor
- Music rooms in close proximity to stage
- Dedicated community space
- Multiple science labs and collaborative spaces





OPTION 1 LEVEL 2  
CALVERTON ES/MS

JRS ARCHITECTS











Event	Time
Mobilize for Demolition	October 31, 2019
Demolition Complete	March 2020
Start of Construction	April 2020
Construction Completion	July 2021
Start of School	September 2021

## Construction Overview



Standard Hours of Operation 7AM – 5PM  
(weekends and off hours work as necessary)



Trucking/Delivery Plan – Coordinated schedule  
W. Franklin St. to Braddish Ave. or Winchester St. to Monroe St.  
(revised April 2020)

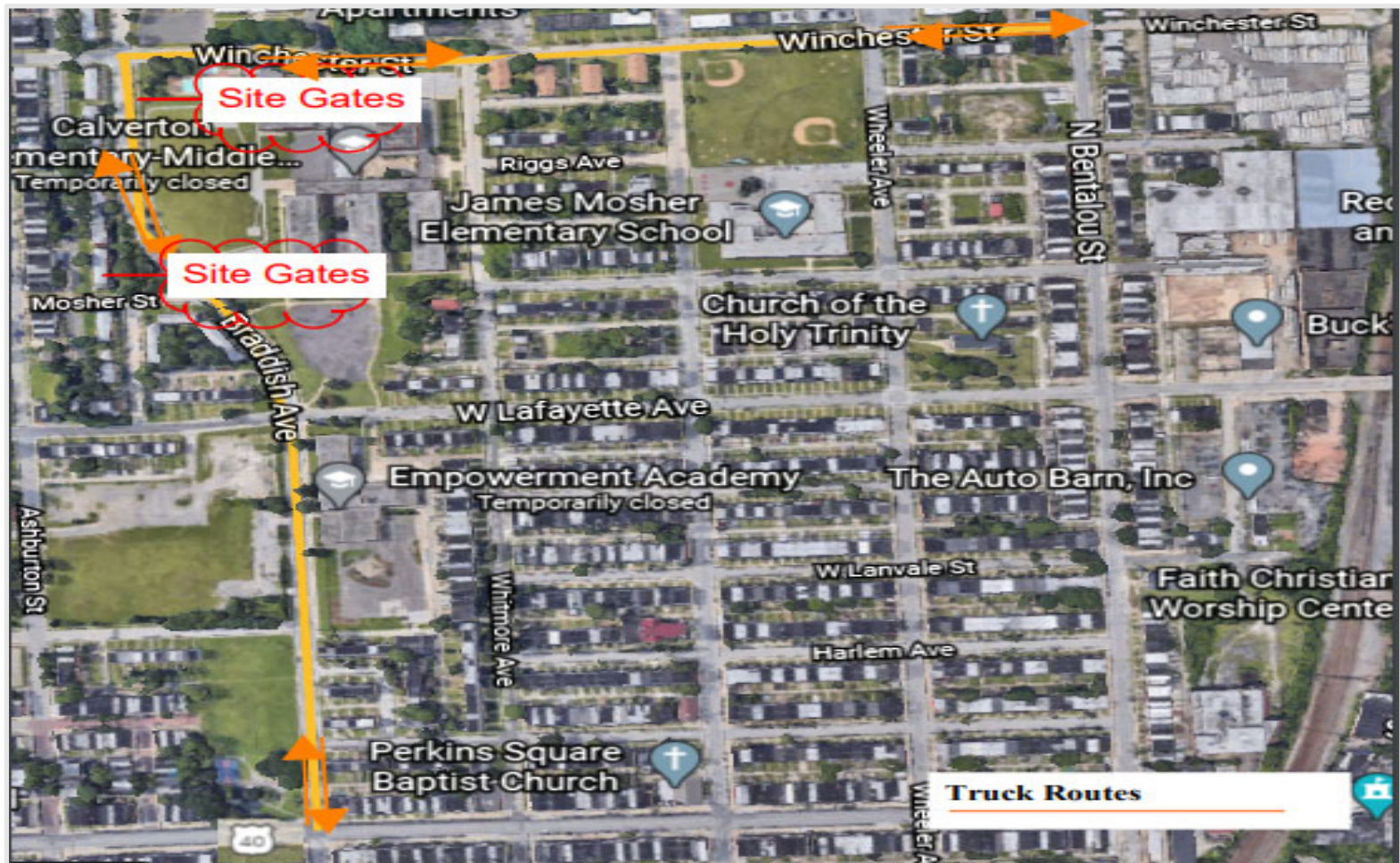


Rodent/Pest Control – 3 Phases  
1. Prior to demolition 2. During demolition/construction 3. Pre-occupancy



## CONSTRUCTION

## Revised Trucking Routes



The construction site has safety/security fencing around the entire perimeter for the duration of construction.

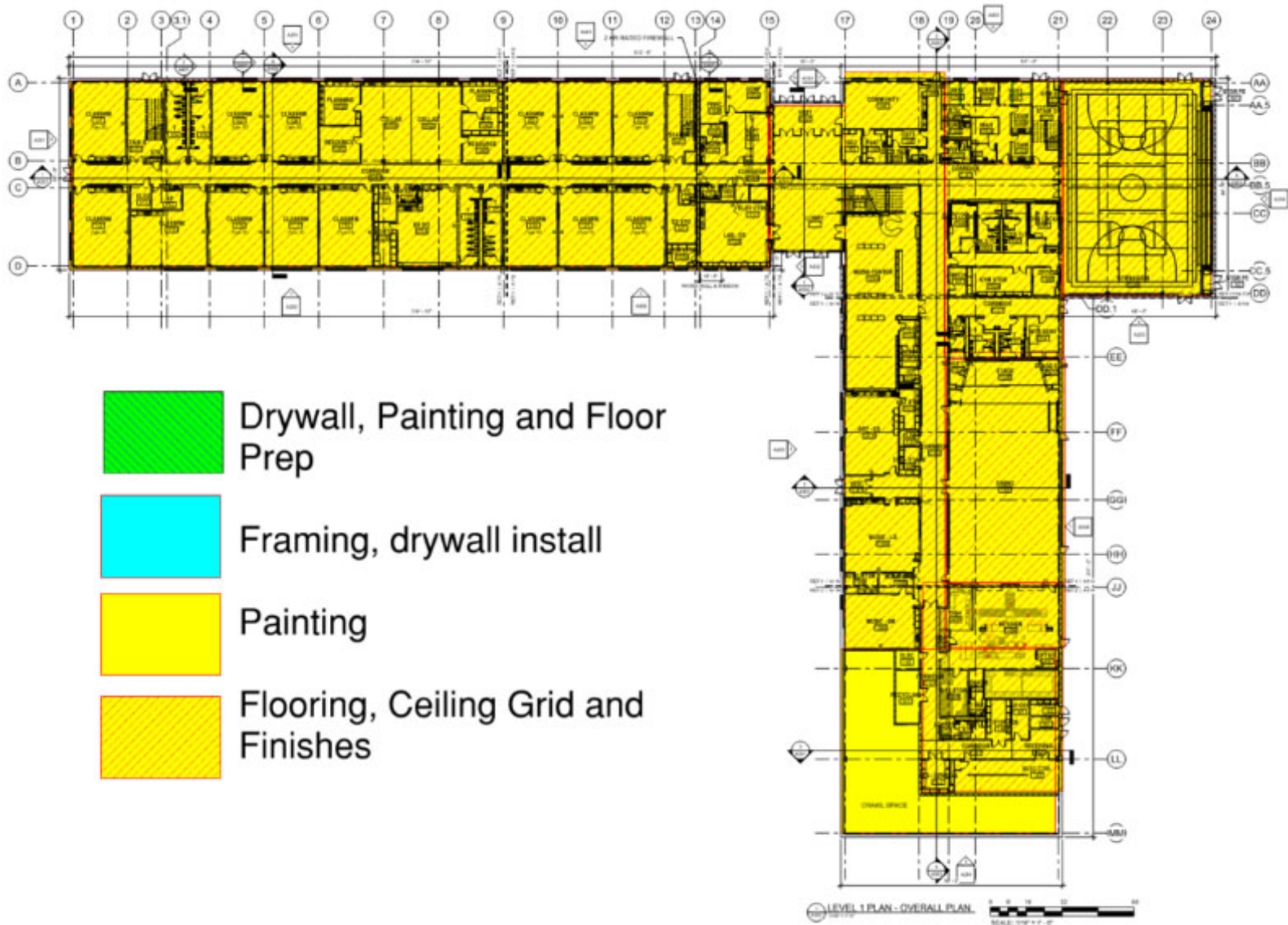
The jobsite is monitored 24/7 by security cameras and motion detection systems.





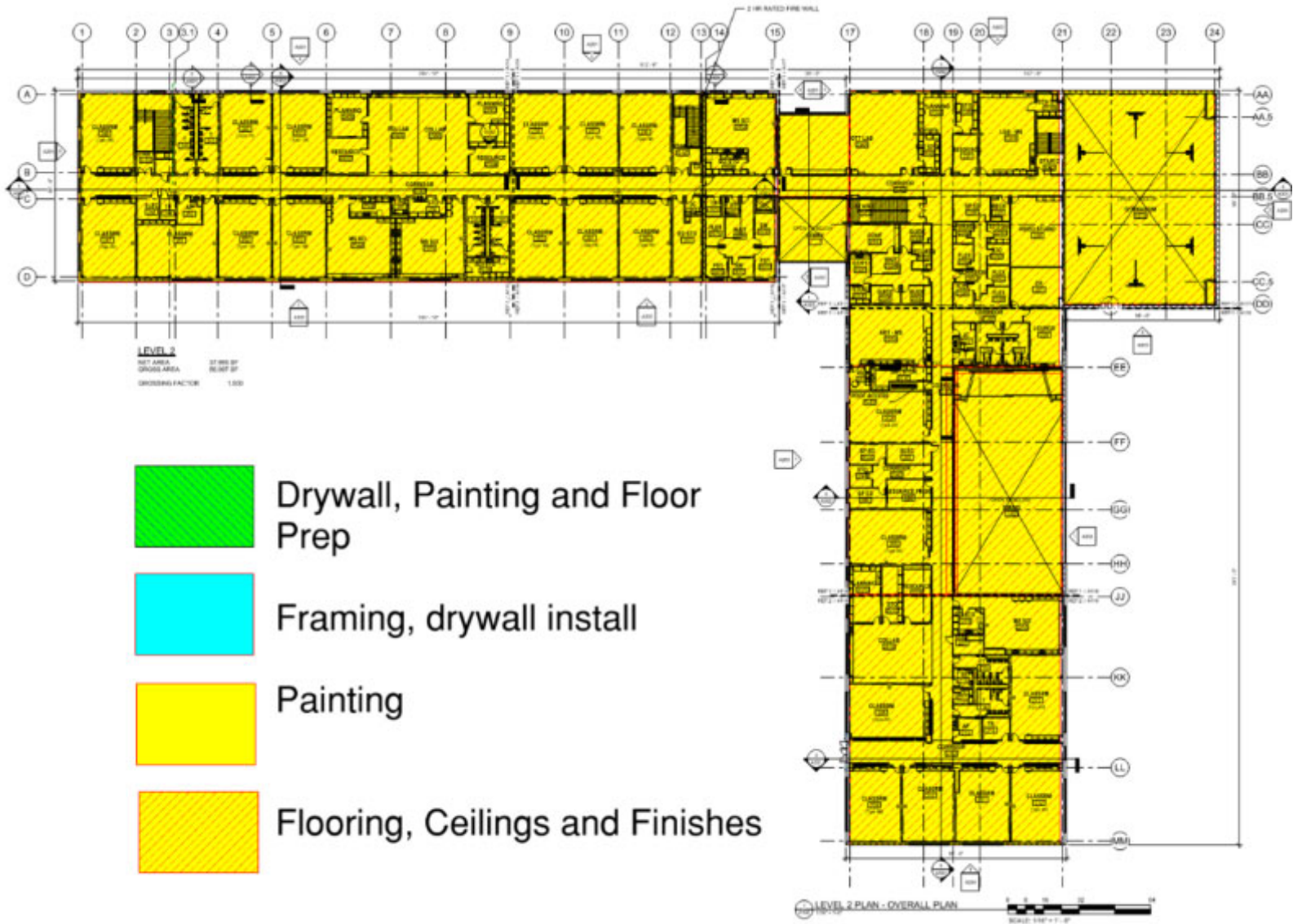
## CONSTRUCTION

### Building Progress Plan – 1<sup>st</sup> Level



# CONSTRUCTION

## Building Progress Plan – 2nd Level























## CONSTRUCTION

### Site Work Activities – Retaining Wall along Whitmore Ave.





## CONSTRUCTION

### Site Work Activities – East Side of Building



## CONSTRUCTION

### Site Work Activities – East Side of Building

















## CONSTRUCTION

### Interior Finishes – Wing B Main Corridor



## CONSTRUCTION

### Interior Finishes – Wing B













## CONSTRUCTION

### Interior Finishes – Kitchen







## CONSTRUCTION

### Interior Finishes – Café and Stage (Taken on 4/5/2021)



## CONSTRUCTION

### Interior Finishes - Gymnasium





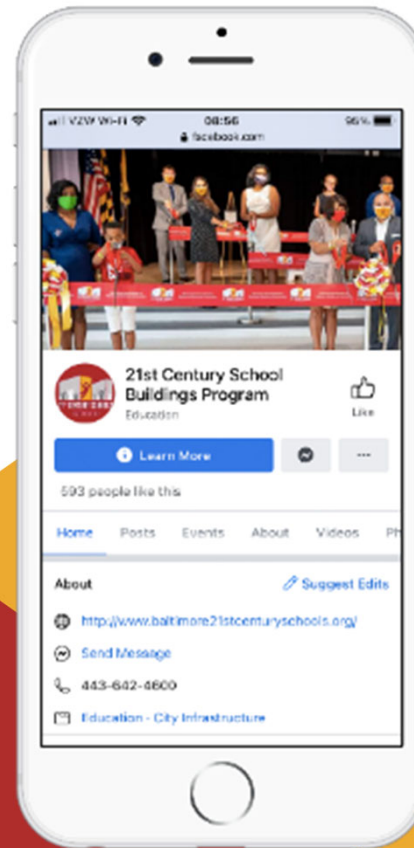
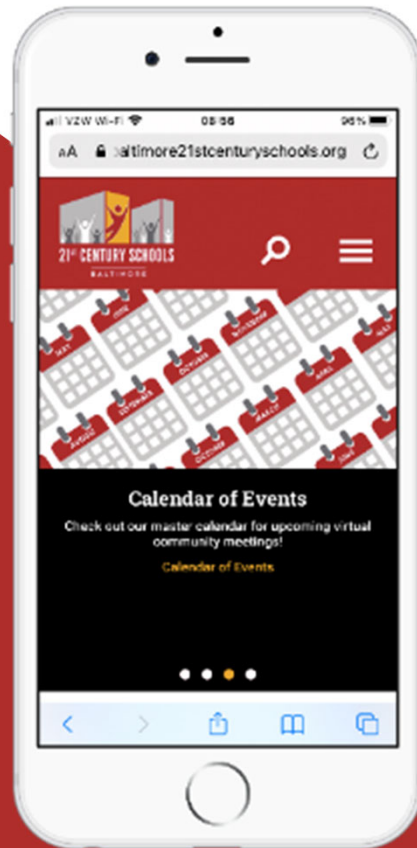
## CONSTRUCTION

## Interior Finishes – Community Space





[www.baltimore21stcenturyschools.org](http://www.baltimore21stcenturyschools.org) @21stCenturySchoolBuildingProgram



# Questions?

---

## Project Contacts

**Sr. Community & Public Relations Coordinator**

Alicia Thomas

athomas03@bcps.k12.md.us

**Community & Public Relations Manager**

Renee Stainrod

rastainrod@bcps.k12.md.us

---

## Program Information/Contacts

**21<sup>st</sup> Century School Buildings Program Office**

(443) 642-4600



21stCSBaltimore



21stCenturySchoolBuildingsProgram



21stCSBaltimore

Thank You!



This presentation is brought to you by the  
21<sup>st</sup> Century School Buildings Program.

**[www.baltimore21stcenturyschools.org](http://www.baltimore21stcenturyschools.org)**

**21<sup>st</sup> Century School Buildings Program**

Baltimore City Public Schools  
200 East North Avenue Room 407-B  
Baltimore MD 21202  
(443) 642-4600

**Dorothy Hellman**

Executive Director, 21<sup>st</sup> Century School Buildings Program  
Baltimore City Public Schools

**Gary McGuigan**

Senior Vice President, Capital Projects Development Group  
Maryland Stadium Authority

**Tisha Edwards**

Director, Mayor's Office of Children & Family Success  
City of Baltimore

**Robert Gorrell**

Executive Director, Public School Construction Program  
State of Maryland

