



# 21st Century School Buildings Program

Bay-Brook Elementary/Middle School  
Construction Update Meeting  
December 12, 2018



## Introductions

### **Presenter**

John Speights  
CAM Construction

## Agenda

- **Project Overview**
- **Construction Activity**
- **Construction Schedule**
- **Upcoming Work**

## Meet the Team



**John Speights, *Project Manager***

Over 30 Years Construction Experience. John spearheads the project management team, interfacing with both the design and ownership teams. Recently completed Robert Poole Building project for the MSA.



**Jeff Lapp, *Superintendent***

Over 30 Years Construction Experience. Superintendent on Hereford High School Renovation, Paul Lawrence Dunbar High School Renovation, & Highlandtown Middle School Renovation.



**Michael Barry, *Bay-Brook Project Manager (MSA)***

Licensed professional engineer and project manager serving as a consultant on the Baltimore City Public Schools Program. Acts as the owners' representative in managing construction projects.

**BAY-BROOK ELEMENTARY/MIDDLE SCHOOL**



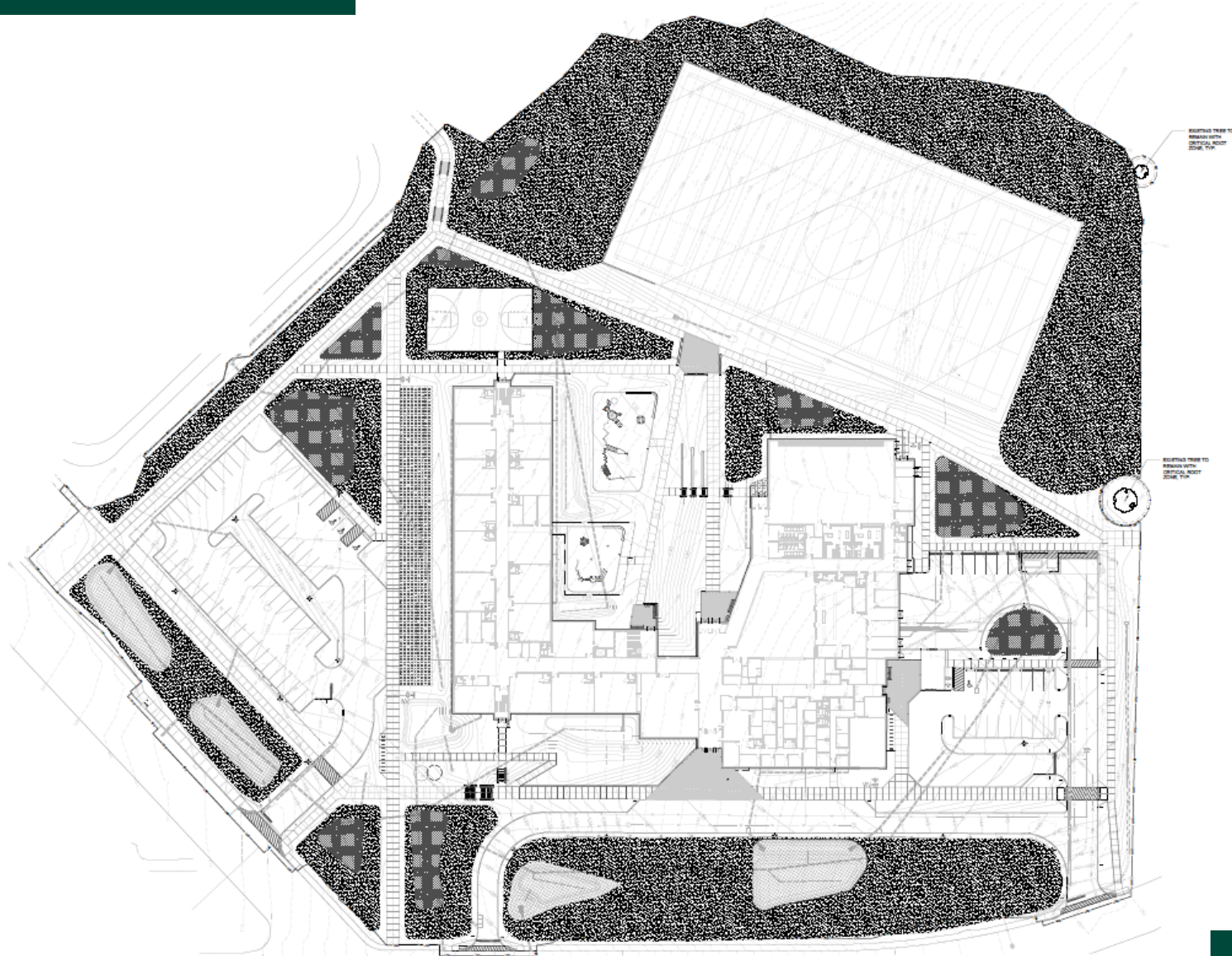


## Project Overview



BAY-BROOK ELEMENTARY/MIDDLE SCHOOL

# Project Overview

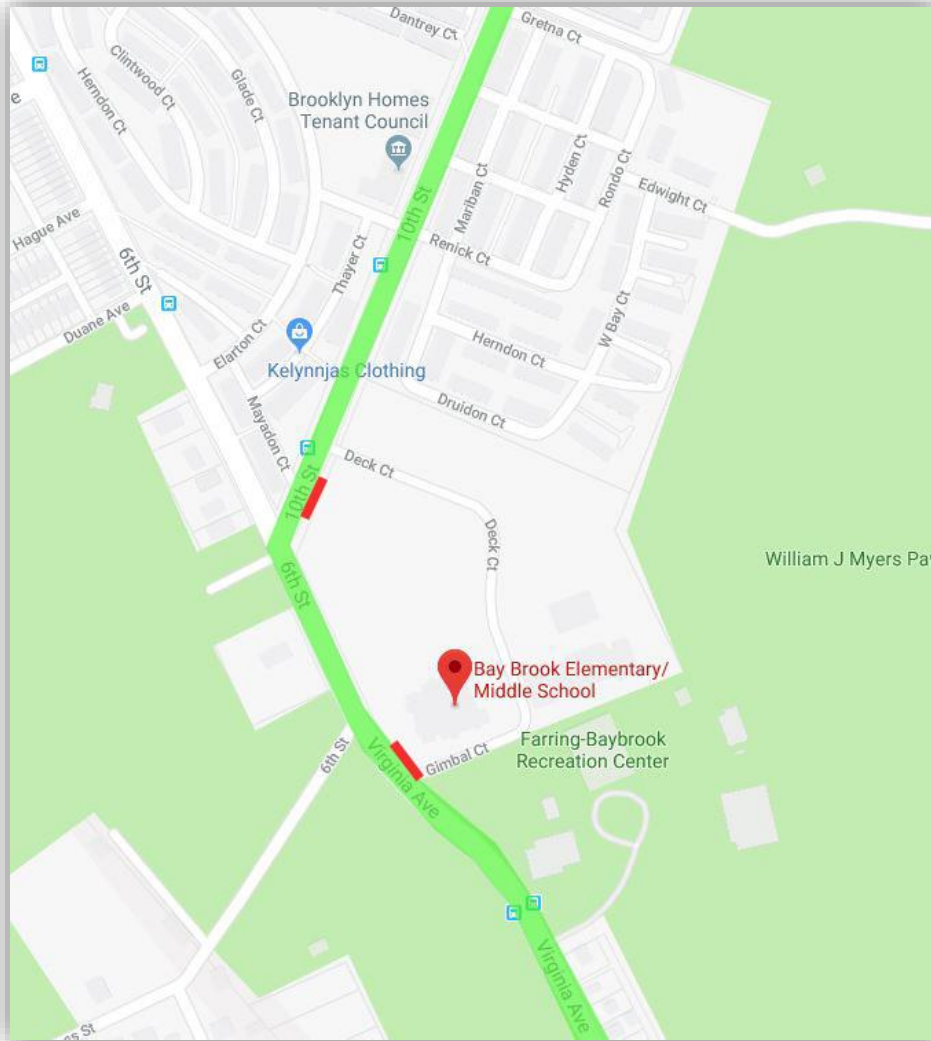


BAY-BROOK ELEMENTARY/MIDDLE SCHOOL

**CAM**  
CONSTRUCTION



# Site Utilization



TRAFFIC  
FLOW



CONSTRUCTION  
ENTRANCES

BAY-BROOK ELEMENTARY/MIDDLE SCHOOL



### Hours of Operation

- *Monday – Saturday 7:30am-3:30pm*

### Parking

- *Onsite parking is limited; Parking is available along Virginia St.*



## Project Safety

- *Site Specific Safety Plan In Place*
- *Daily/Weekly Safety Meetings*

## Community Safety

- *Perimeter Site Fencing In Place*
- *Sidewalks are Fully Functional & Accessible*
- *Security Presence on Site 24/7*

## Issues

- *Emergency – Call 911*
- *Non-Emergency – Call (410) 560-2828*



### **Past**

- Building Foundation
- Site Utilities

### **Current**

- Complete Building Foundations
- Continue with Site Utilities
- Public Utility Installation

### **Upcoming**

- Concrete Slab Pours
- CMU Bearing Walls for Steel
- Steel Erection

## Construction Activity: Photos



BAY-BROOK ELEMENTARY/MIDDLE SCHOOL



## Construction Activity: Photos



BAY-BROOK ELEMENTARY/MIDDLE SCHOOL



## Construction Activity: Photos



BAY-BROOK ELEMENTARY/MIDDLE SCHOOL

**CAM**  
CONSTRUCTION



## Construction Activity: Photos



BAY-BROOK ELEMENTARY/MIDDLE SCHOOL



## Construction Activity: Photos



BAY-BROOK ELEMENTARY/MIDDLE SCHOOL

**CAM**  
CONSTRUCTION



## Construction Activity: Photos



BAY-BROOK ELEMENTARY/MIDDLE SCHOOL

**CAM**  
CONSTRUCTION



## Construction Activity: Photos



BAY-BROOK ELEMENTARY/MIDDLE SCHOOL





## Construction Activity: Photos



BAY-BROOK ELEMENTARY/MIDDLE SCHOOL



## Construction Activity: Photos

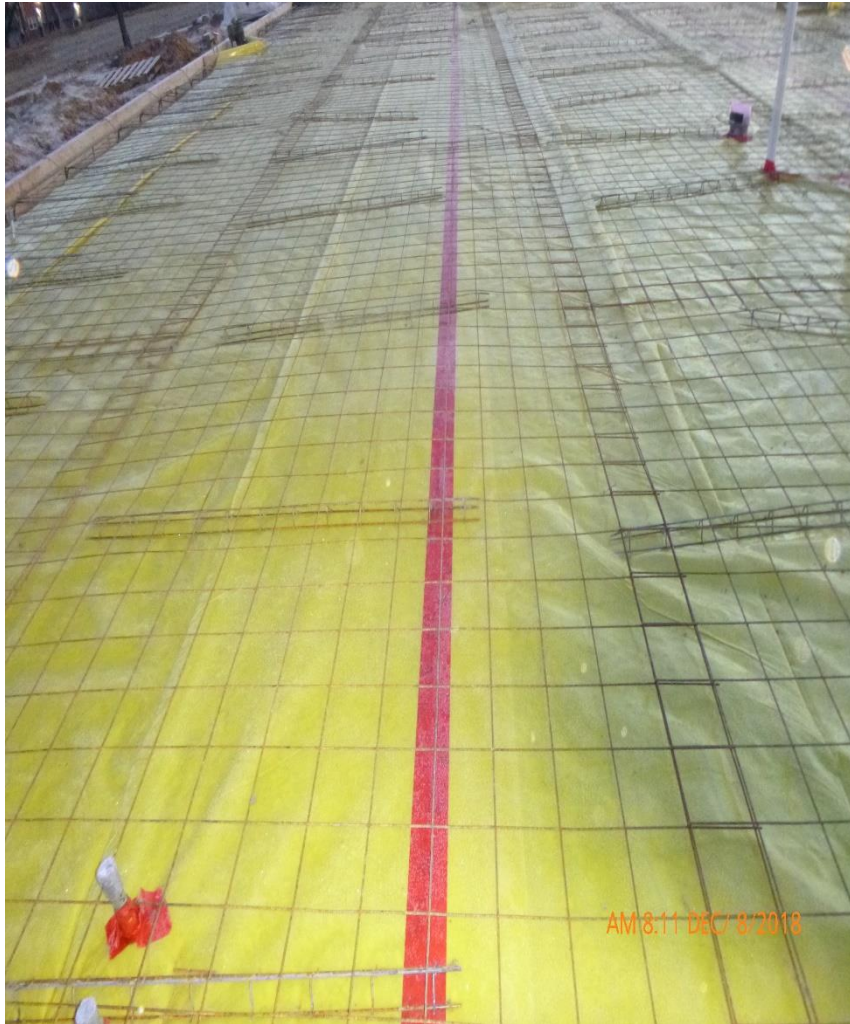


BAY-BROOK ELEMENTARY/MIDDLE SCHOOL





## Construction Activity: Photos



BAY-BROOK ELEMENTARY/MIDDLE SCHOOL



## What to Expect Next

- Steel Erection Area A
- Slab Pours Area B-D
- CMU Bearing Walls at Cafeteria and Gym
- New Utility Services



# Questions?

[www.baltimore21stcenturyschools.org](http://www.baltimore21stcenturyschools.org)

**21st Century School Buildings Program**

Baltimore City Public Schools  
200 East North Avenue Room 407-B  
Baltimore MD 21202  
(443) 642-4600

**Cheri Vincent**

Interim Executive Director, 21st Century Buildings Program  
Baltimore City Public Schools

**Gary McGuigan**

Senior Vice President, Capital Development Division  
Maryland Stadium Authority

**James T. Smith, Jr.**

Chief of Strategic Alliances  
City of Baltimore

**Robert Gorrell**

Executive Director, Public School Construction Program  
State of Maryland

