

BALTIMORE CITY PUBLIC SCHOOLS

1

2017-18 Portfolio Review Recommendation

Arlington Elementary/Middle School Community Meeting
November 15, 2017

Introductions

Nicole Price

Director, Community & Public Relations
City Schools

Emily Sherman

Transition Support Coordinator
City Schools

Charlie Ravenna

21st Century School Buildings Program
Project Manager
Maryland Stadium Authority

Meredith Sullivan, AIA

Senior Associate
Design Collective, Inc.

Agenda

Portfolio Recommendation

Arlington Middle Grades

Transition Planning

Academic Planning

Arlington Elementary and Early Learning Center Design Review

Review of Schools: An Annual Process

3

Focuses on ensuring that all students have access to rigorous, robust academic programs in safe, healthy environments that promote success.

City Schools considers a range of factors including:

- Academic performance
- Climate indicators
- Access, quality and distribution of school programming and assessing whether specific student populations and specific geographic areas are equitably served
- School enrollment and school size
- Building utilization and condition
- Schools scheduled for closure as part of the 21st Century Buildings Plan
- Renewal framework for operator-run schools

Areas of Focus for 2017-18

- Making sure school programs are sustainable and able to provide the high-quality, robust programming (e.g., arts, STEM, CTE, foreign language, sports, clubs) that all students deserve
- Addressing facilities issues
- Reviewing programs where interventions have not changed outcomes for students to the level that students deserve
- Ensuring availability of high-quality options across populations and geography with particular focus on equity
- Ensuring efficient use of resources available in the 21st Century program
- Meeting building utilization targets required under the 21st Century Buildings Plan

Arlington Elementary/Middle School

5

Recommendation

- Delay removal of middle grades until 2019-20

Considerations

- Arlington is requesting a one-year delay in changing its grade configuration.
- In the 2014-15 portfolio review, the Board approved changing the grade configuration of Arlington from pre-k to 8 to a pre-k to 5 school starting in the 2018-19 school year, with middle grades students to attend Pimlico Elementary/Middle school.
- Both Arlington and Pimlico are part of the 21st Century School Buildings Plan; with current construction schedules Pimlico will now open prior to completion of Arlington's renovation.
- The delay will allow more time for both schools to prepare for the transition and merger of the middle grade students, including academic planning and engaging families in the new school communities.

Opportunities for Feedback

COMAR Hearing

Tuesday, November 28, 2017,
7:00 – 9:00 PM
200 E. North Avenue, Board Room

Special Session: Public Testimony

Tuesday, December 12,
7:00 – 9:00 PM
200 E. North Avenue, Board Room

Board votes on the portfolio recommendations

Tuesday, December 19, 2017,
6:00 PM
200 E. North Avenue, Board Room

Comments or Questions?

Questions for staff about any recommendations, please send to:

AnnualPortfolioReviewQuestions@bcps.k12.md.us.

To send feedback directly to the Board, please send to:

PortfolioRecommendations@bcps.k12.md.us

Messages to the Board must be sent by Friday, December 15 by 5:30 pm

Please include “2017/18 Portfolio Review” in the subject line.

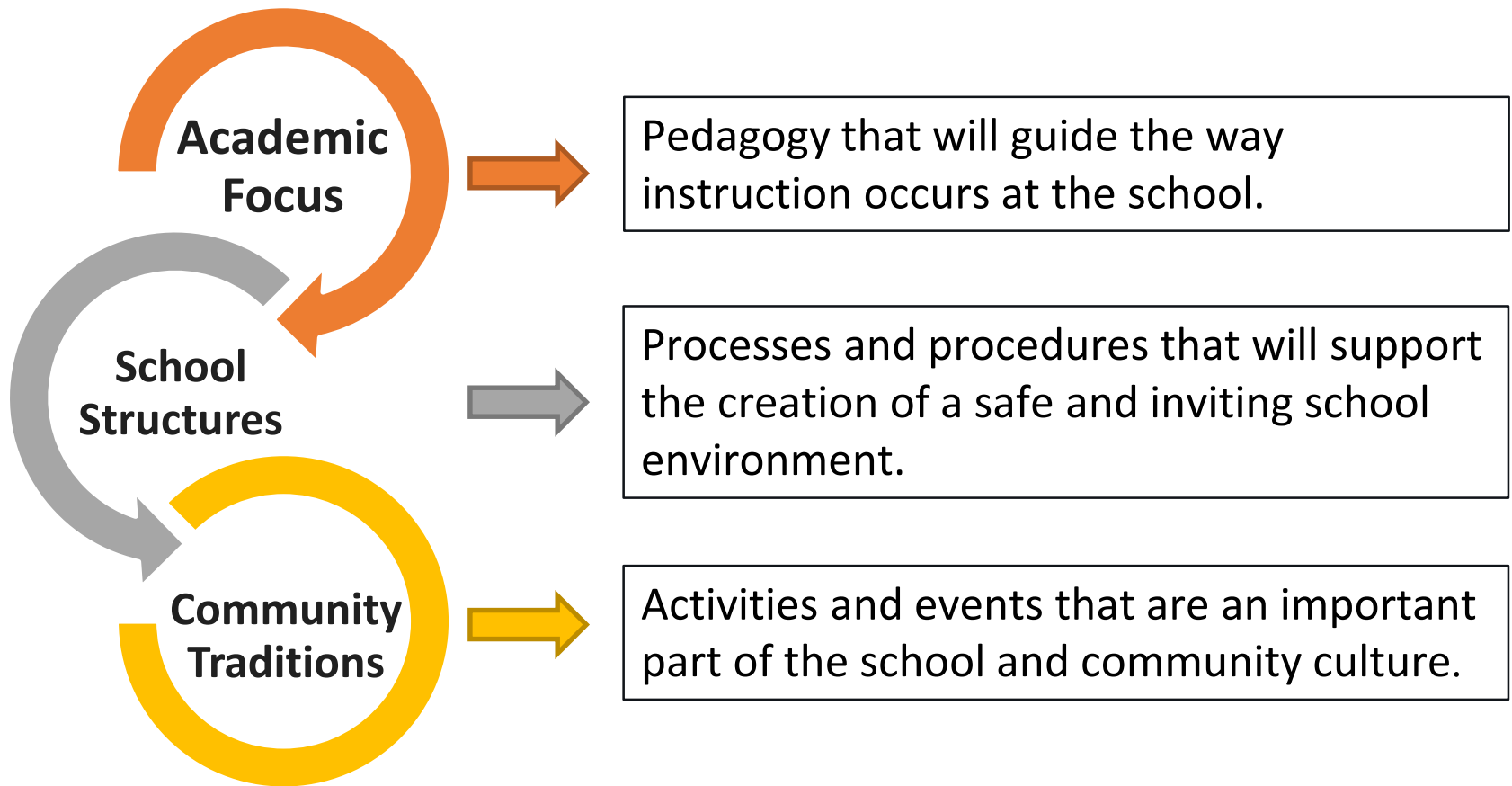
Feedback may also be mailed to the Board at:

Baltimore City Board of School Commissioners

200 E. North Avenue, Room 406, Baltimore, MD 21202



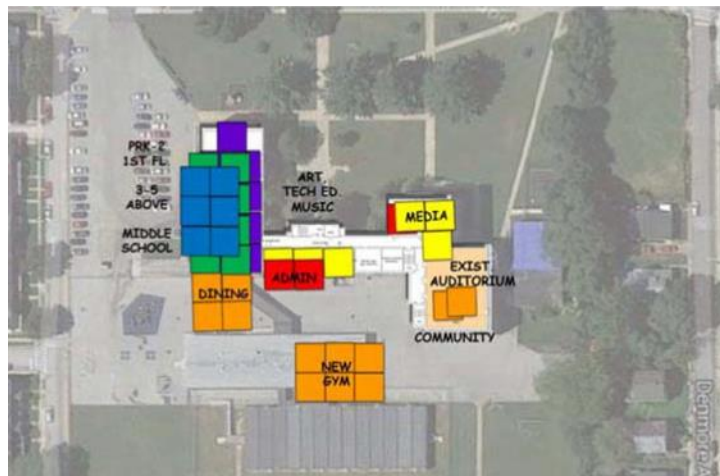
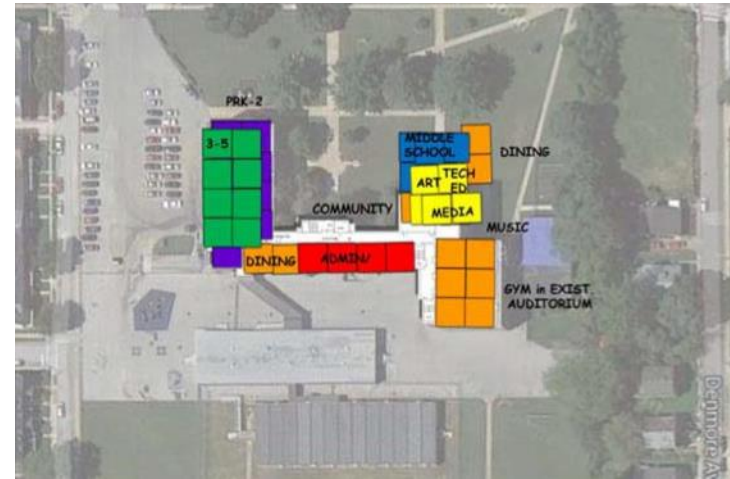
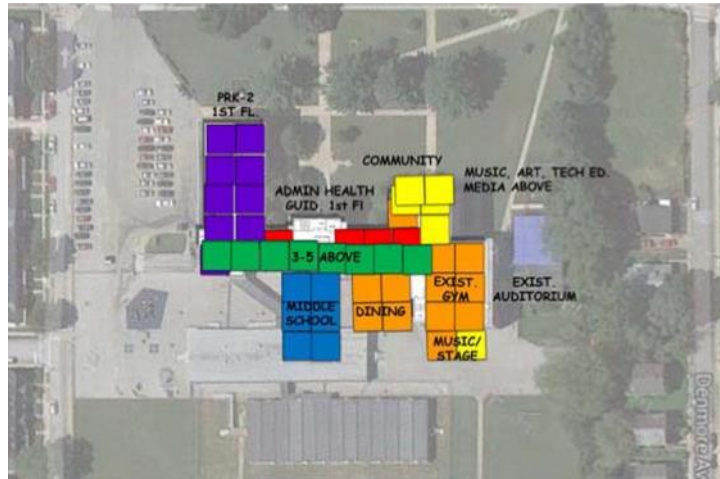
21st Century Academic Planning Components



Arlington Classrooms and Spaces

(5) Pre K & kindergarten classrooms	(5) ECDC classrooms
(6) classrooms for grades 1 & 2	(2) Headstart classrooms
(9) classrooms for grades 3, 4, & 5	Auditorium (existing)
(3) collaborative learning areas	Media center (existing)
(2) special education classrooms	Cafeteria
(1) science classroom	Gymnasium (existing)
(1) technical education room	Administrative, Health Suites
(2) music rooms	Student services
(1) art room	Community Space

Feasibility Study versus Design

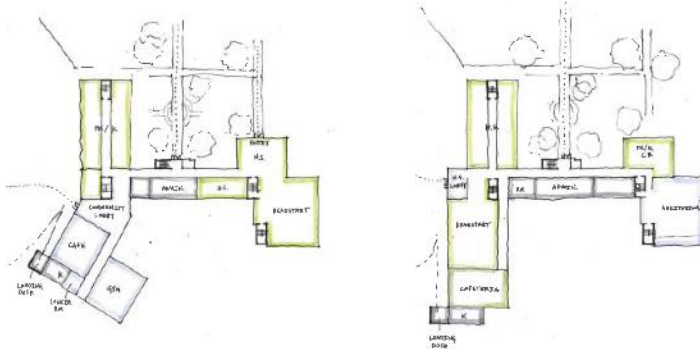


Design Goals

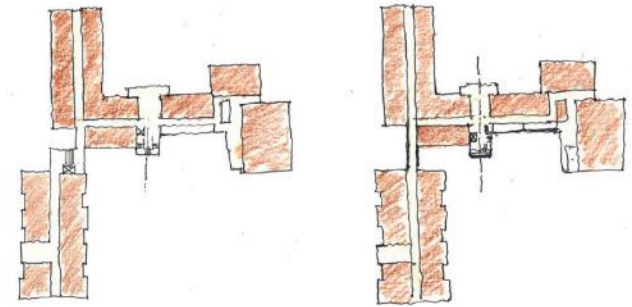
- Renovate existing 1925 & 1930 buildings to provide 21st century learning environments to students
- Update existing building to exceed current accessibility standards
- Provide Weinberg Early Childhood Development Center (ECDC) with separate entrance
- Provide outdoor 21st century learning spaces
- Respect historic significance of existing building

Concepts Explored/Project Development

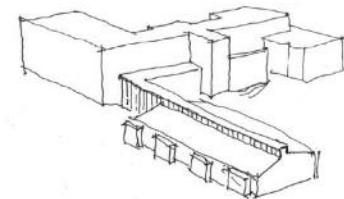
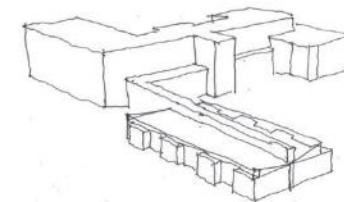
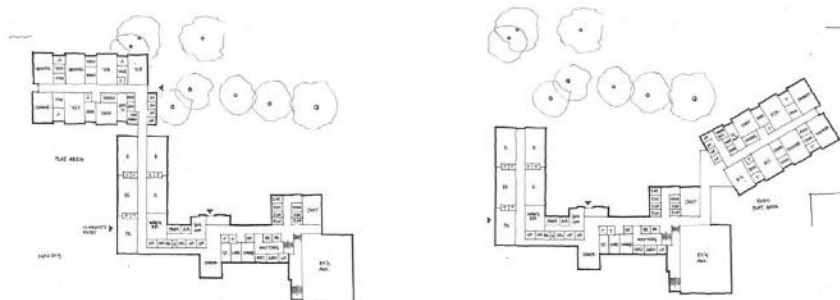
CAFETERIA / HEADSTART ADDITIONS



ECDC / JUDY CENTER ADDITIONS



ECDC / JUDY CENTER ADDITIONS














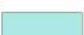

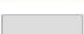

Proposed Site Plan

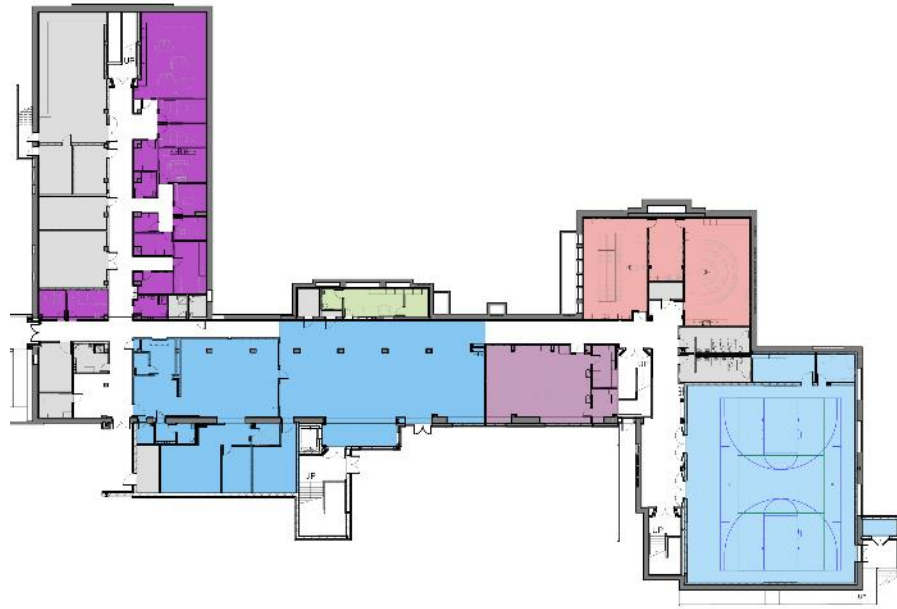


Project Development

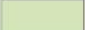



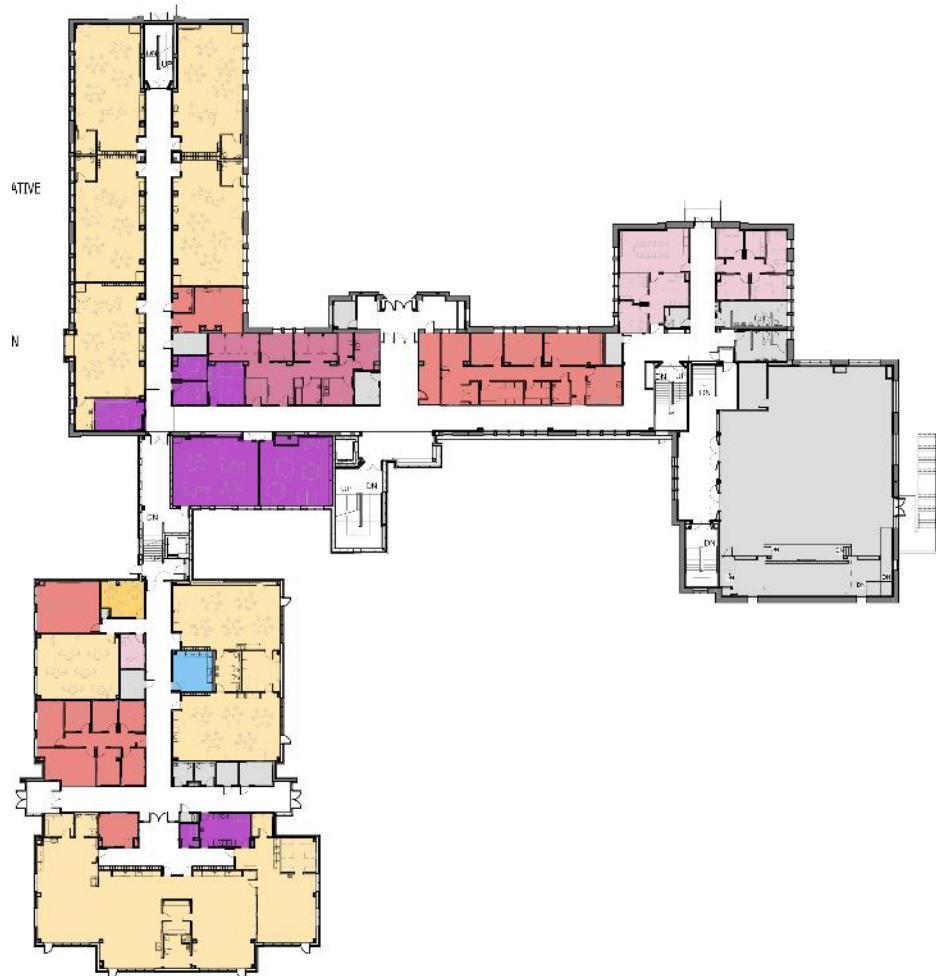
Proposed Ground Floor Plan

	ADMINISTRATION
	HEALTH SUITE
	GUIDANCE
	TEACHING
	SUPPORT/COLLABORATIVE
	SPECIAL ED
	SCIENCES
	VISUAL ARTS
	MUSIC
	TECHNOLOGY
	PHYSICAL EDUCATION
	MEDIACENTER
	FOOD SERVICE
	BUILDING SERVICE
	COMMUNITY



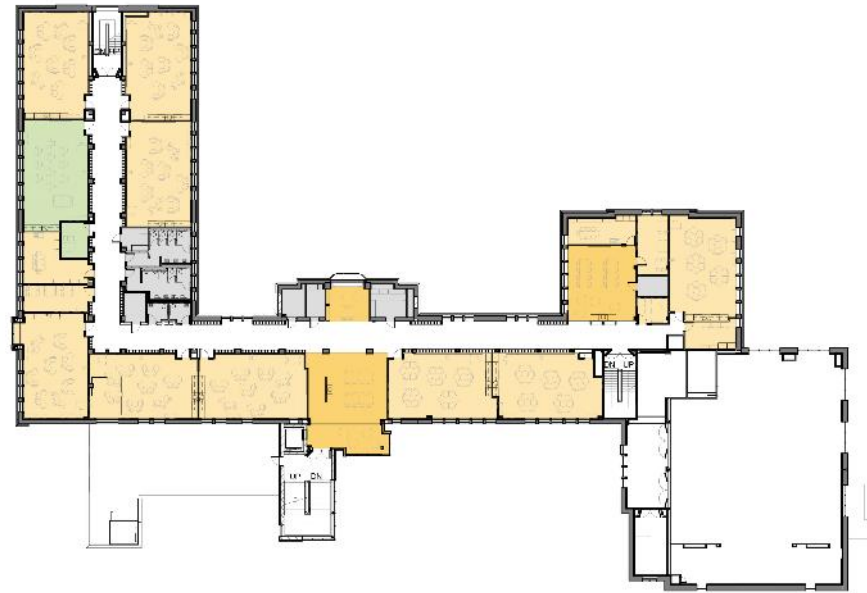
Proposed First Floor Plan

	ADMINISTRATION
	HEALTH SUITE
	GUIDANCE
	TEACHING
	SUPPORT/COLLABORATIVE
	SPECIAL ED
	SCIENCES
	VISUAL ARTS
	MUSIC
	TECHNOLOGY
	PHYSICAL EDUCATION
	MEDIACENTER
	FOOD SERVICE
	BUILDING SERVICE
	COMMUNITY






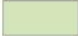


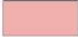




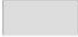



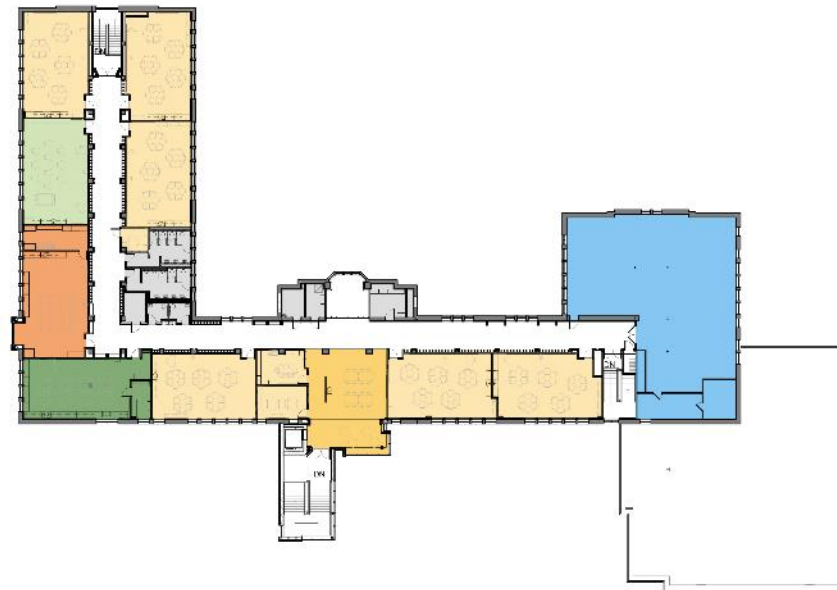
Proposed Second Floor Plan

	ADMINISTRATION
	HEALTH SUITE
	GUIDANCE
	TEACHING
	SUPPORT/COLLABORATIVE
	SPECIAL ED
	SCIENCES
	VISUAL ARTS
	MUSIC
	TECHNOLOGY
	PHYSICAL EDUCATION
	MEDIACENTER
	FOOD SERVICE
	BUILDING SERVICE
	COMMUNITY



Proposed Third Floor Plan

	ADMINISTRATION
	HEALTH SUITE
	GUIDANCE
	TEACHING
	SUPPORT/COLLABORATIVE
	SPECIAL ED
	SCIENCES
	VISUAL ARTS
	MUSIC
	TECHNOLOGY
	PHYSICAL EDUCATION
	MEDIACENTER
	FOOD SERVICE
	BUILDING SERVICE
	COMMUNITY





MAIN ENTRANCE



VIEW LOOKING NORTHEAST

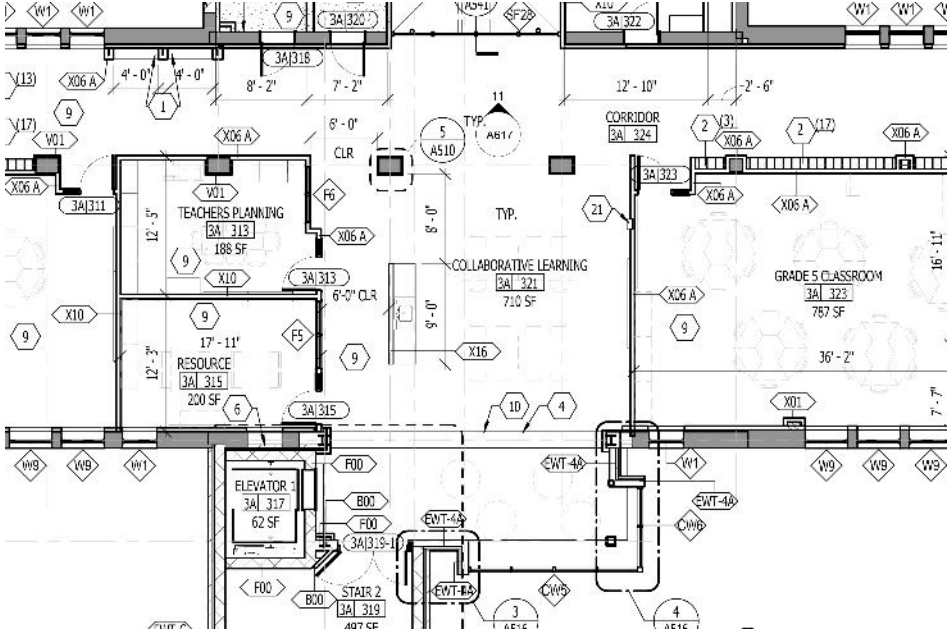


VIEW LOOKING SOUTHWEST

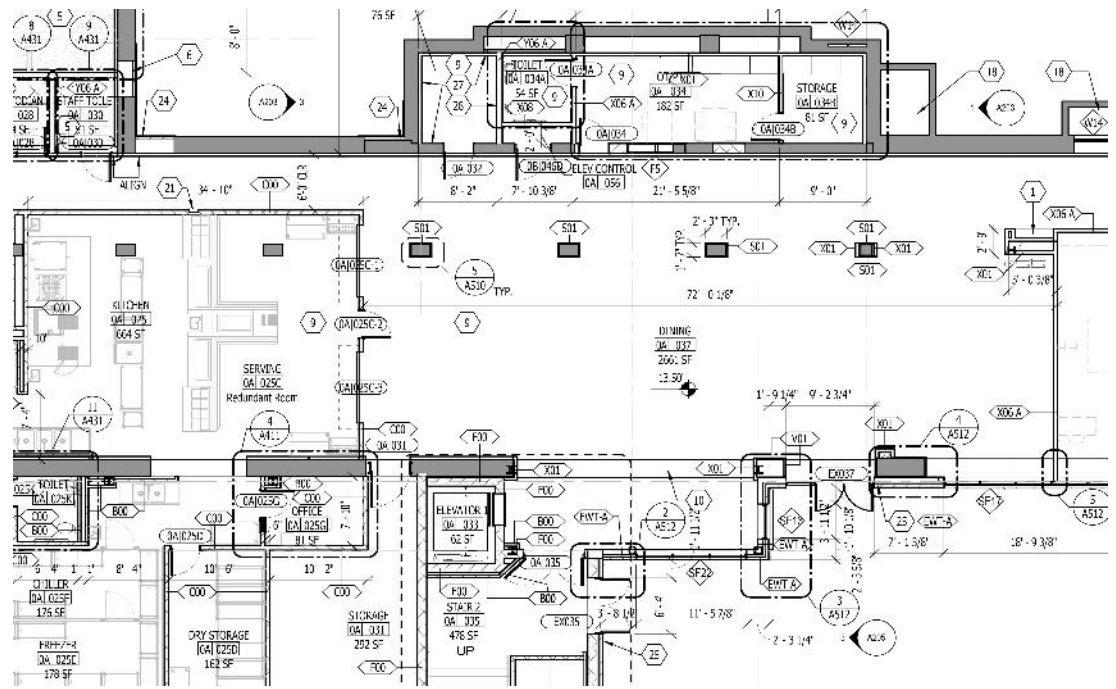


OUTDOOR SPACES

COLLABORATION SPACE



CAFETERIA





**Pimlico Elementary/Middle School
Rendering**

Questions?

CONTACTS

Nicole Price

nprice@bcps.k12.md.us

21st Century School Buildings

Program Office

(443) 642-4600

www.baltimore21stcenturyschools.org



Instagram

@21stCSBaltimore

Twitter

@21stCSBaltimore

Facebook

@21stCenturySchoolBuildingsProgram

Thank You!



This presentation is brought to you by the
21st Century School Buildings Program.

www.baltimore21stcenturyschools.org

21st Century School Buildings Program

Baltimore City Public Schools
200 East North Avenue Room 407-B
Baltimore MD 21202
(443) 642-4600

Mignon R. Anthony

Executive Director, 21st Century Buildings Program
Baltimore City Public Schools

Gary McGuigan

Senior Vice President, Capital Development Division
Maryland Stadium Authority

James T. Smith, Jr.

Chief of Strategic Alliances
City of Baltimore

Robert Gorrell

Executive Director, Public School Construction Program
State of Maryland

BALTIMORE CITY
PUBLIC SCHOOLS

