



21st Century School Buildings Program

Commodore John Rodgers Elementary/Middle School
COMMUNITY MEETING NO. 1 – CONCEPT DESIGN PRESENTATION
December 14, 2022

Presenters	Agenda
<p>Renee Stainrod Public Relations/Engagement Manager 21st Century School Buildings Program</p> <p>Ivy McNeill Engagement Program Coordinator 21st Century School Buildings Program</p> <p>Michael McBride Design Director 21st Century School Buildings Program</p> <p>Rick LeBlanc Architect Crabtree Rohrbaugh & Associates</p>	<ul style="list-style-type: none"> • Introductions • 21st Century Overview & Planning the CJR Project • Project Scope • Design • Schematic Site Plan • Schematic Floor Plans • Project Timeline

A **Feasibility Study** is an analysis of the existing condition of the site and building components to include systems, structure, capacity, and other planning and design considerations.

The study produced four possible solutions; (1) Strategic Renovation and Additions, (2) Major Renovations and Additions, (3) Major Renovation & Partial School Replacement, and (4) Replacement School. Each option addressed:

- **Educational Specifications:** Increased capacity to 1029 students.
- **Current Site Limitations:** Inadequate site play areas, service access, parking, and accessibility.
- **Option #4**, the Replacement Option, was selected as the recommendation, because it allows for the most effective and comprehensive redevelopment of the site and improved parking, student drop off, and play areas.



Existing Site Challenges

- Building organization and parking are not aligned on site – parking is at rear.
- Play areas separated on site.
- Building service is through the adjacent property.
- No parent drop off area.
- No bus drop off zone.

Existing Building Challenges

- Building is undersized for enrollment.
- Significant reconfiguration of interior space to meet Ed. Spec. requirements.
- Mechanical and electrical systems have major deficiencies.





Replacement for Commodore John Rodgers Pre-K/8 Elementary/Middle School

- 1,029 design capacity.
- Consolidate main entrance and parking with separate bus and vehicular access.
- Create secure and contained play areas for Pre-K, K, Head Start, and Grades 1-8.
- Strong connection to community.
- Promote safety and security through design.
- Locate Pre-K and Kindergarten on main entrance floor level for primary student access.
- Daylight and views for all classroom and learning spaces.
- Sustainable design – LEED Silver Certification.



Replacement for Commodore John Rodgers Pre-K/8 Elementary/Middle School

- Community space location to improve community access and enhance safety and security.
- Holistic approach to design.
- Engage people and places to create learning opportunities.
- Integrate interiors and furniture to enhance educational spaces.
- Interior finishes that reflect schools' values & traditions.
- Create dynamic learning environments through use of color and patterns.
- Durable, cost-effective materials to enhance life cycle costs.



Site Features

- Main entrance on N. Washington Ave. – provides vehicular access and parking at main entrance location.
- Secure play area along E. Fairmount Ave. and N. Chester Street.

Safety & Security

- Defined main entrance at bus and parent drop-off.
- Three separate and secured play areas.
- Dedicated staff, visitor, and community parking totaling 41 spaces.

Site Opportunities

- Re-oriented building and site to optimize use of available space.

Pedestrian Circulation & Community Connectivity

- Main Entrance and parking provide access to all community support spaces.



Separate public & community spaces from academic wing.

Pre-K and K classrooms located on the main entrance floor with direct access to their play area.

Improved vertical/horizontal building circulation.

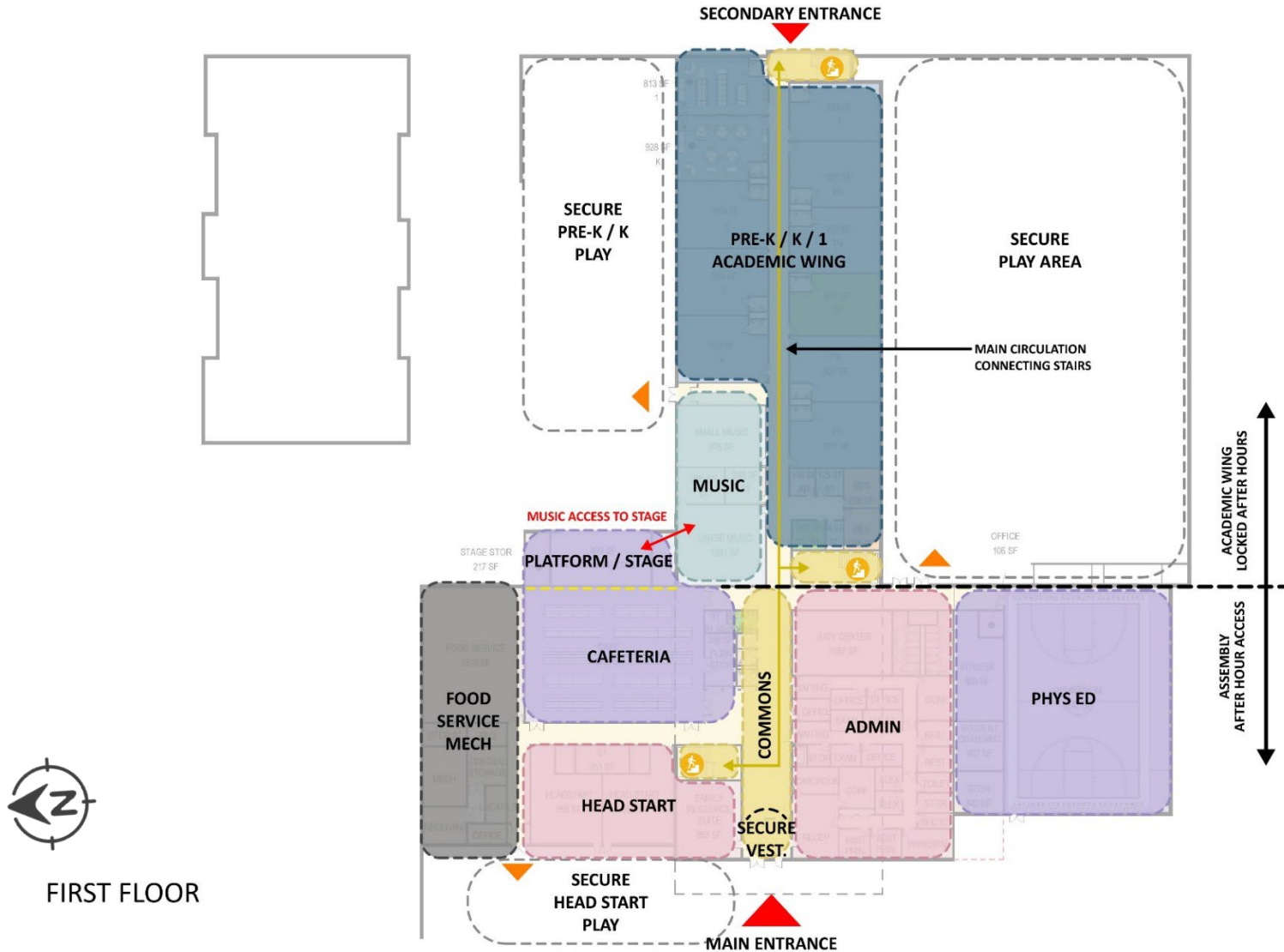
Grade groupings are separated by floor levels.

Cluster Pre-K and Kindergarten classrooms.

Create separate play areas dedicated by grade groupings.

Provide daylighting into all learning spaces.

Security is enhanced with the ability to secure the academic wings during community use.



FIRST FLOOR

Commodore John Rodgers EMS
Community Meeting No 1.
Concept Design Presentation
December 14, 2022

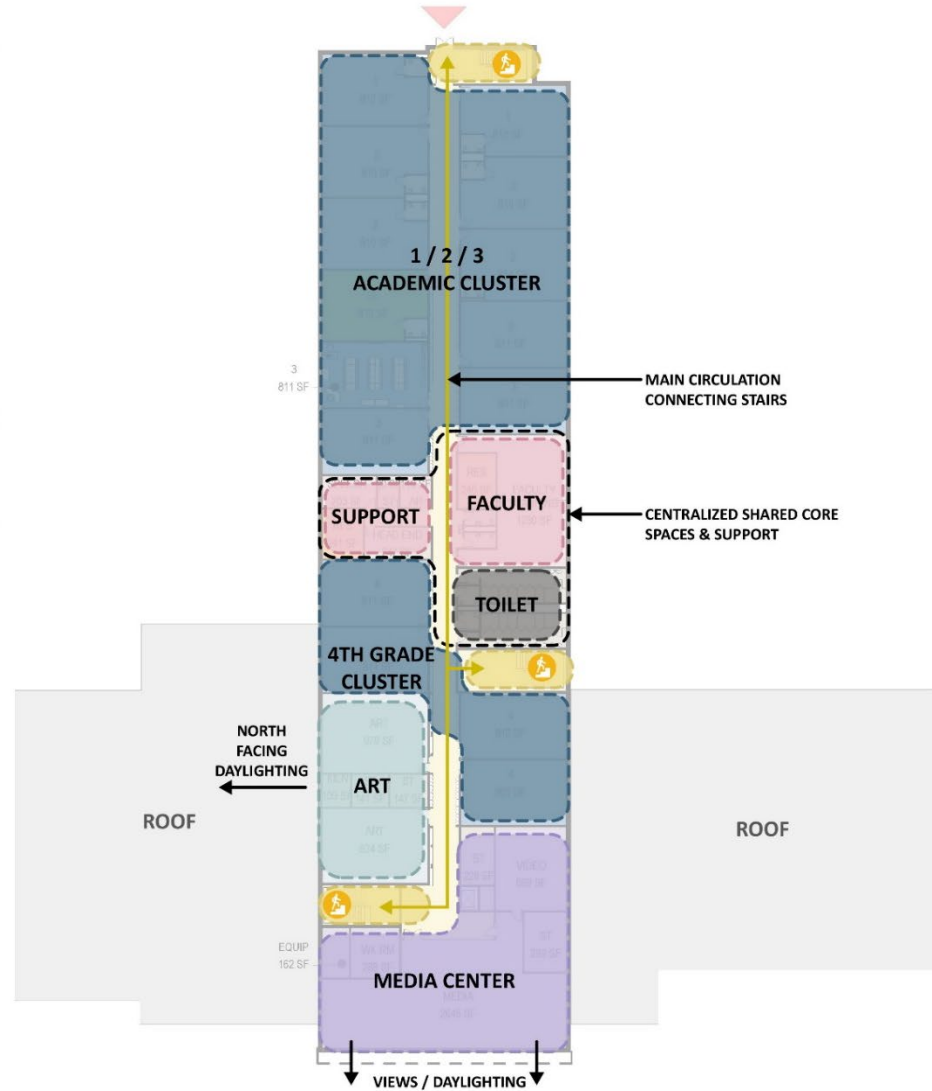


- Pre-K-1 Grades
- Music Classrooms
- Gym/Fitness and Support Spaces
- Cafetorium/Stage
- Judy Center
- Administration
- Guidance
- Health Suite
- Family Resource Room
- Head Start Classrooms/Outdoor Play

Commodore John Rodgers EMS
Community Meeting No 1.
Concept Design Presentation
December 14, 2022

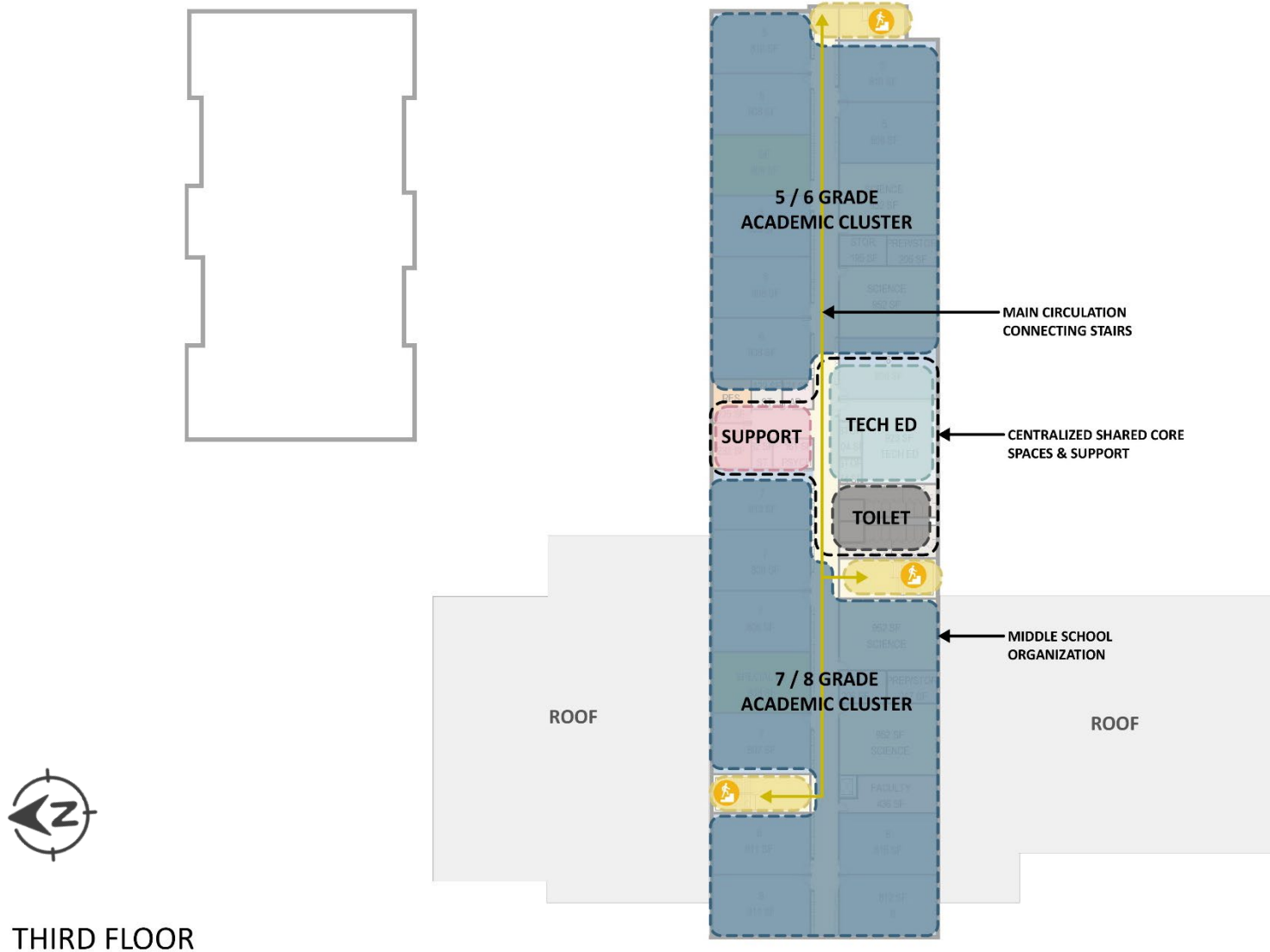


SECOND FLOOR

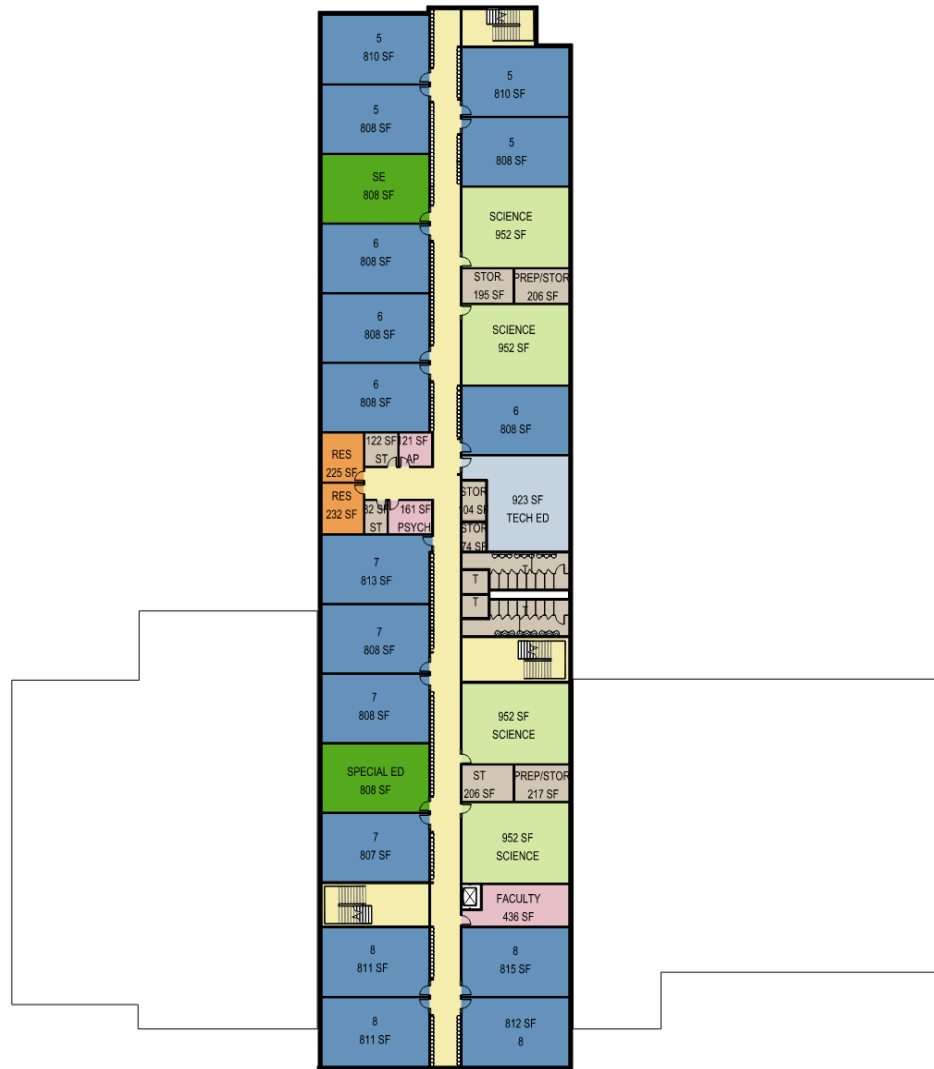




- Grades 1-4
- Special Education Classroom
- Speech
- Art Classrooms
- Media Center/Video Room
- Faculty Planning Room



THIRD FLOOR



- Grades 5-8
- Special Education Classrooms
- Science Classrooms
- Technology Education
- Resource Rooms
- Faculty Planning





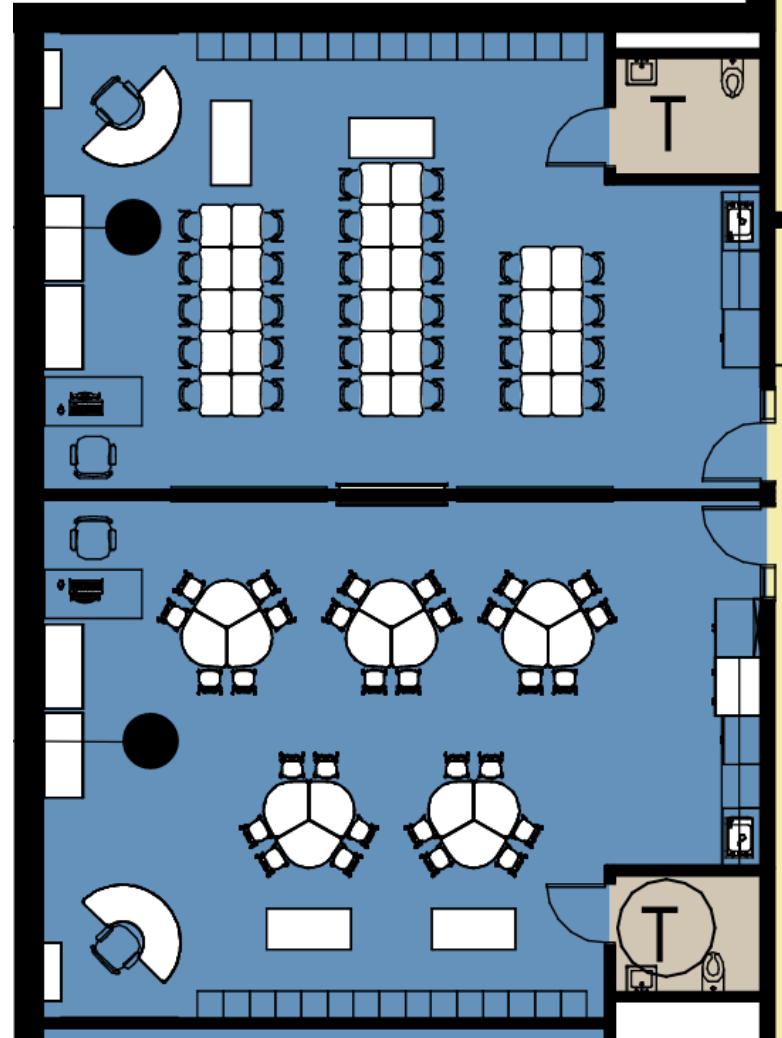




BAY BROOK ES/MS CLASSROOM



MONTEBELLO ES/MS CLASSROOM

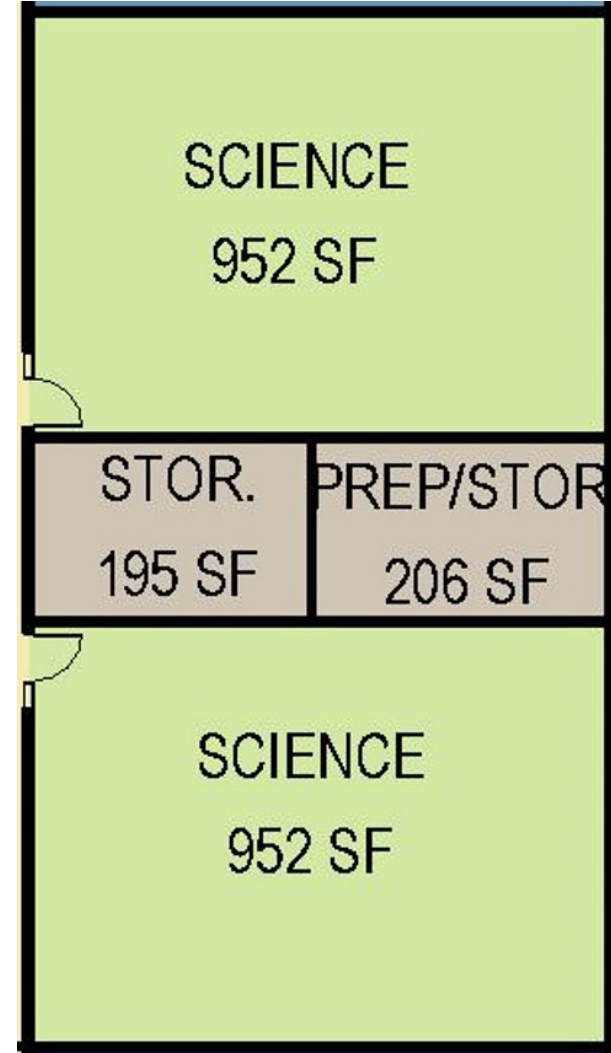




BAY BROOK ES/MS SCIENCE CLASSROOM



BAY BROOK ES/MS SCIENCE CLASSROOM

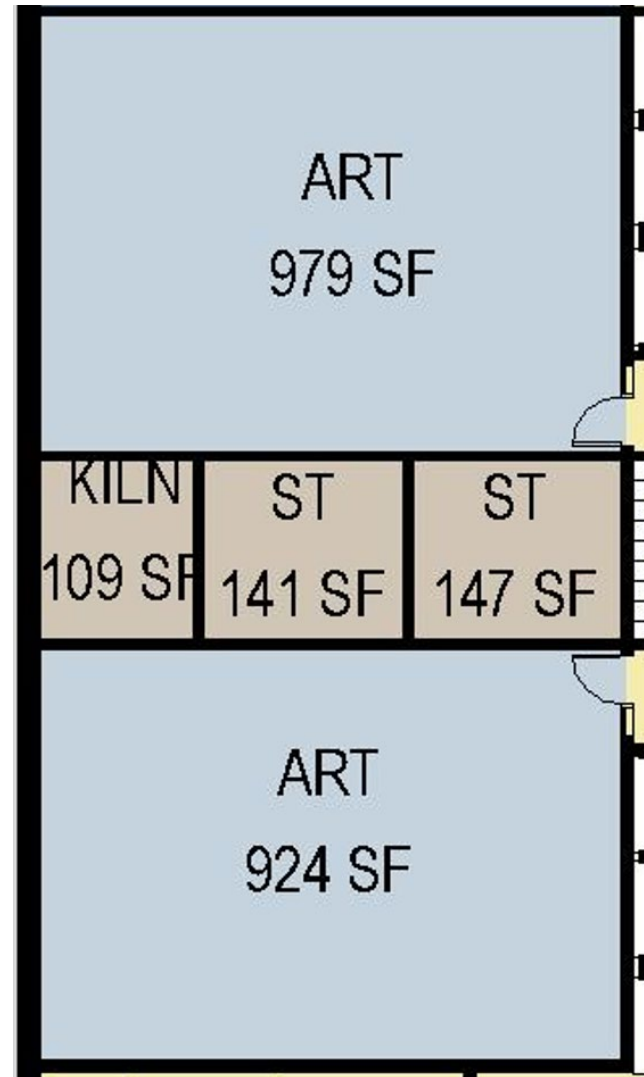




BAY BROOK ES/MS ART CLASSROOM

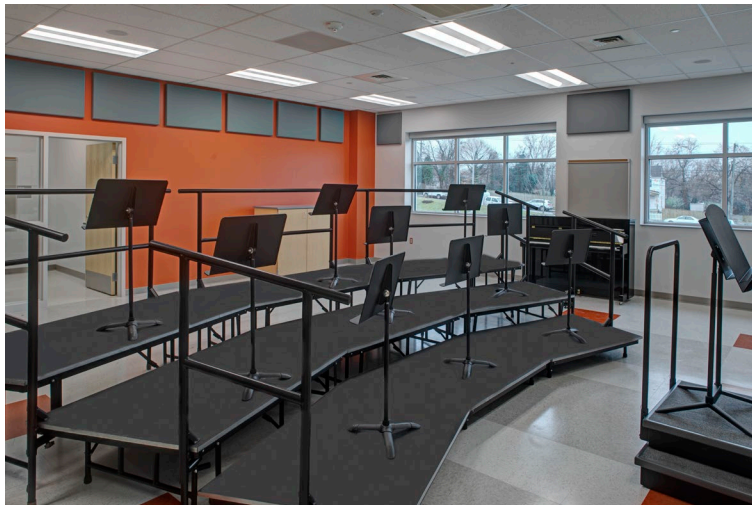


BAY BROOK ES/MS ART CLASSROOM

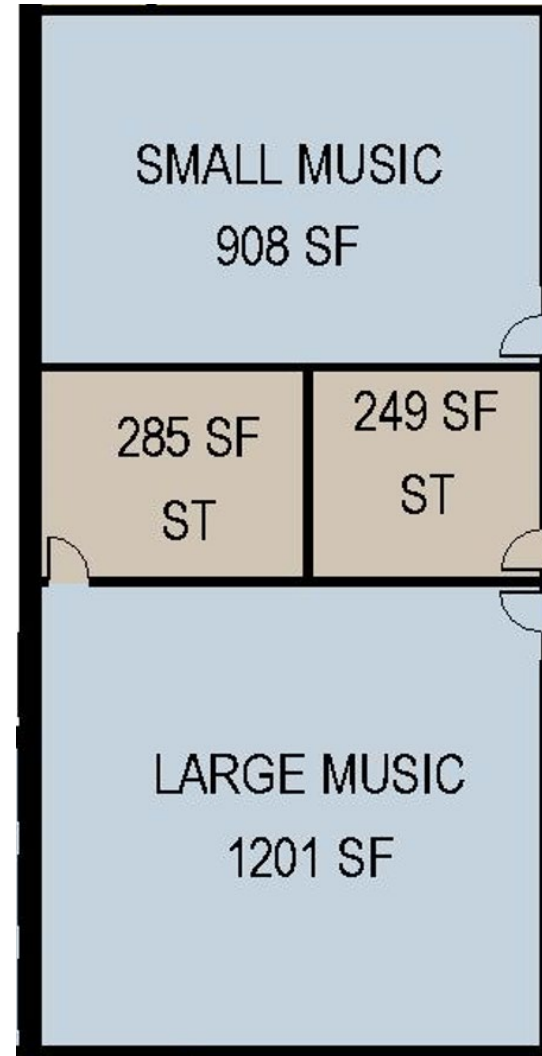




BARESVILLE ES MUSIC CLASSROOM

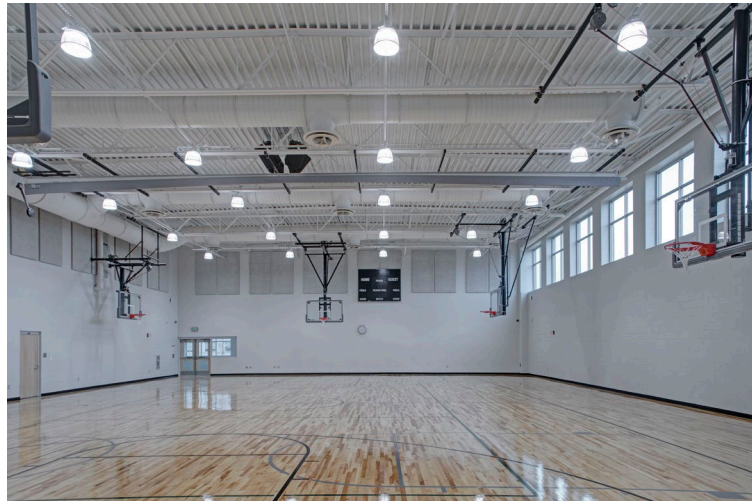


BAY BROOK ES/MS MUSIC CLASSROOM

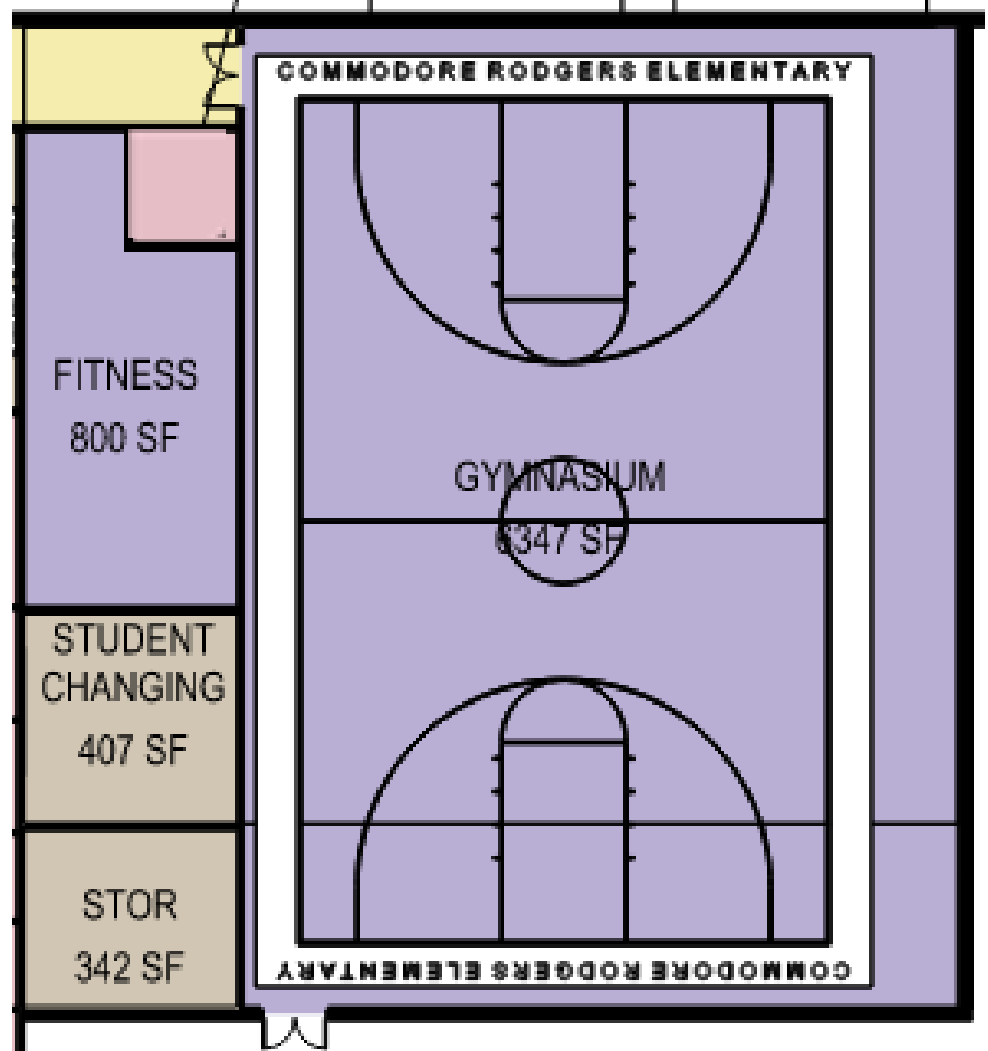




MONTEBELLO ES/MS GYMNASIUM



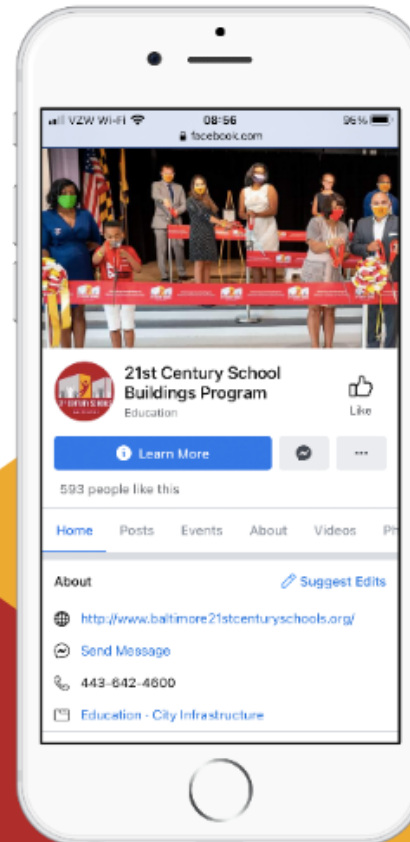
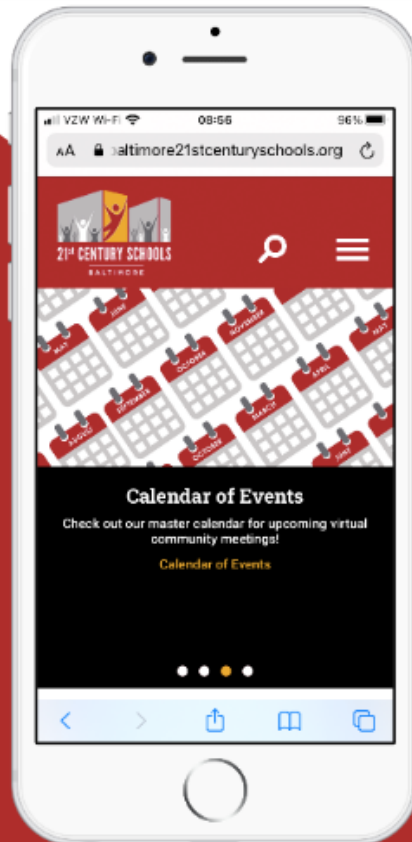
BAY BROOK ES/MS GYMNASIUM



Schematic Design:	Winter 2022/Spring 2023*
Design Development:	Spring 2023*
Construction Documents:	Summer 2023*
Bidding:	Fall 2023*
Begin Construction:	Fall 2023*
Substantial Completion:	Summer 2025*

** Dates listed are based on a projected schedule and are subject to change.*

www.baltimore21stcenturyschools.org @21stCenturySchoolBuildingProgram



Questions?

Program Contacts

Sr. Community & Public Relations Coordinator

Ivy McNeill

idmcneill01@bcps.k12.md.us

Community & Public Relations Manager

Renee Stainrod

rastainrod@bcps.k12.md.us

Program Information

21st Century School Buildings Program Office

(443) 642-4600

www.baltimore21stcenturyschools.org

Baltimore City Public Schools

200 East North Avenue Room 407-B

Baltimore MD 21202

(443) 642-4600

Thank You.

This presentation was brought to
you by the Baltimore City
Schools Operations Department.



BALTIMORE CITY
PUBLIC SCHOOLS

