



21st Century School Buildings Plan

SCHOOL Robert W. Coleman Elementary School
COMMUNITY MEETING Design Development | October 24, 2019



Introductions

Ivy McNeill

Community & Public Relations Program
Coordinator
21ST Century Schools

Tyler Dumont

21st Century School Buildings Program
Project Manager
Maryland Stadium Authority

Omari A. Davis

Maressa Pinnock

RRMM Lukmire Architects

Agenda

1. DESIGN GOALS & DESIGN PROCESS UPDATE
2. PROPOSED SITE PLAN LAYOUT
3. PLAYGROUNDS
4. PLANTING PLAN
5. SITE CIRCULATION
6. PROPOSED FLOOR PLAN
7. MEDIA CENTER & COLLABORATION SPACE PREVIEW
8. ENTRANCE UPDATES
9. QUESTIONS AND COMMENTS

Design Goals

- **Welcome and Inviting Space for Children, Families and Community**
- **Provide Teaching & Support Spaces that are the Appropriate Size**
- **Create an Understandable Circulation System that is Orienting & Easy to Monitor**
- **Incorporate Technology throughout the school**
- **Maximize Natural Lighting**
- **Create a more Effective Space Layout**
- **Enclose “Open Space” Classrooms**
- **Create a special Mindfulness space**
- **Create a welcoming and inviting main entrance**

Design

Planning : 6-8 months

Pre-Design: 2-4 months
18-24 months

Design: 10-12 months



February 2020

Design: 10-12 Months

Meeting #5
Concept



October 24, 2019

Meeting #6
Schematic



Meeting #7
Design Development



Community Meeting: "Design Development" | Robert W. Coleman Elementary | www.baltimore21stcenturyschools.org

Meeting #8
Final Drawings



Proposed Site Plan



Department Legend

01 ADMINISTRATION
02 STUDENT SERVICES
03 TEACHING AND LEARNING
06 FINE ARTS
09 PHYSICAL EDUCATION
11 FOOD SERVICES
12 BUILDING SERVICES
13 COMMUNITY SPACE

Proposed PK-2nd Play Area

Pre-k - 2nd Grade Space, Option C



FOR A BETTER TOMORROW
WE PLAY TODAY
shapedbyplay.com



Proudly presented by:
Justin Wilson



Proposed 3rd – 5th Play Area

3rd-5th Grade Space, Option D



FOR A BETTER TOMORROW
WE PLAY TODAY
shapedbyplay.com



Proudly presented by:
Justin Wilson



Pedestrian Access



- Alternate routes facilitated by sidewalk network
- New & enhanced crosswalks
- Site front entry stairs

Department Legend

	01 ADMINISTRATION
	02 STUDENT SERVICES
	03 TEACHING AND LEARNING
	06 FINE ARTS
	09 PHYSICAL EDUCATION
	11 FOOD SERVICES
	12 BUILDING SERVICES
	13 COMMUNITY SPACE

Bus Access



- On site bus loop

Department Legend

- 01 ADMINISTRATION
- 02 STUDENT SERVICES
- 03 TEACHING AND LEARNING
- 06 FINE ARTS
- 09 PHYSICAL EDUCATION
- 11 FOOD SERVICES
- 12 BUILDING SERVICES
- 13 COMMUNITY SPACE

Car Access

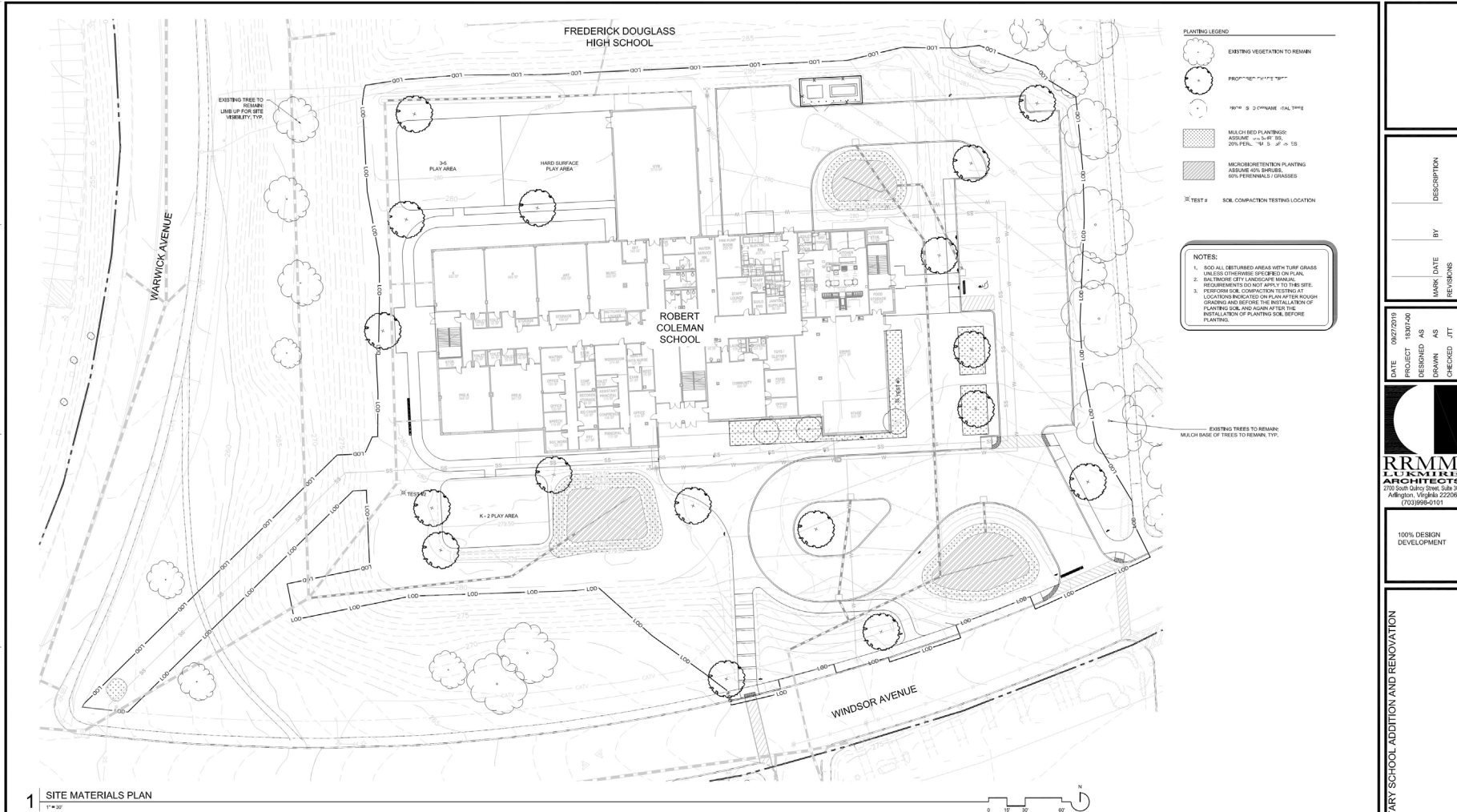


- On site drop-off
- Street drop-off

Department Legend

- 01 ADMINISTRATION
- 02 STUDENT SERVICES
- 03 TEACHING AND LEARNING
- 06 FINE ARTS
- 09 PHYSICAL EDUCATION
- 11 FOOD SERVICES
- 12 BUILDING SERVICES
- 13 COMMUNITY SPACE

Proposed Planting Plan



PLANTING LEGEND

- EXISTING VEGETATION TO REMAIN
- PROPOSED PLANTING
- 18" x 3" CYPRESS - 10' TALL TREE
- MULCH BED PLANTINGS: ASSUME 4" x 8" x 8" 20% PERL. 1/4" S. 2" x 2" S.S.
- MICROBIORETENTION PLANTING ASSUME 40% SHRUBS, 60% PERENNIALS & GRASSES
- TEST # SOIL COMPACTION TESTING LOCATION

NOTES:

1. SOIL ALL DISTURBED AREAS WITH TURF GRASS UNLESS OTHERWISE SPECIFIED ON PLAN.
2. MAINTAIN ALL LANDSCAPE MATERIAL REQUIREMENTS DO NOT APPLY TO THIS SITE.
3. PERFORM SOIL COMPACTION TESTING AT LOCATIONS INDICATED ON PLAN FOR ROAD GRADING AND BEFORE THE INSTALLATION OF PLANTING SOIL AND AGAIN AFTER THE INSTALLATION OF PLANTING SOIL BEFORE PLANTING.

EXISTING TREES TO REMAIN
MULCH BASE OF TREES TO REMAIN, TYP.

1 SITE MATERIALS PLAN
1" = 20'

TREE PLANT PALETTE

QTY.	KEY	BOTANICAL/COMMON NAME	SIZE	ROOT	COMMENTS
	SHADE TREES				
AR		Acer rubrum 'Spectabil'	2.5' CAL	86B	Central Leader, Full Canopy
		Bonellii Red Maple			Matched
BH		Buckeye Yellowdog	10' HL	86B	Multi-Stem, 3-4 stems
CB		Carolina Yew	2.5' CAL	86B	Central Leader, Full Canopy
		European Hornbeam			Matched, 10 Branches
CK		Claytonia korshukii	2.5' CAL	86B	Central Leader, Full Canopy
		Yewwood			Matched
LS		Liquidambar styraciflua 'Wald'	2.5' CAL	86B	Central Leader, Full Canopy
		Sweetgum			Matched, Do Not Fall Day
OB		Quercus blanda	2.5' CAL	86B	Central Leader, Matched

FOUNDATION PLANT PALETTE

QTY.	KEY	BOTANICAL/COMMON NAME	SIZE	ROOT	COMMENTS
	SHRUBS				
CA		Osbeckia alabamica 'Steven Cordier'	#3	Cont.	18" Spc., Full, Matched
		Suncoaster			Matched
HO		Hydrangea serrata	24" Spc.	Cont.	Full, Matched
		Goldfish Hydrangea			Full, Matched
PL		Prunus laurocerasus 'Ota Luyker'	#7	Cont.	Full, Matched
		Dwarf Cherry Laurel			Full, Matched
RA		Rhus aromatica 'Solei'	#5	Cont.	24" Spc., Full, Matched
		Dwarf Fragrant Sumac			Full, Matched
	PERENNIALS & GRASSES				
AMS		Anemone hybrid	#1	Cont.	24" O.C.
		Threadleaf Bluestar			Matched
COR		Cornopsis verticillata 'Moonbeam'	#1	Cont.	18" O.C.

BIORETENTION PLANT PALETTE

QTY.	KEY	BOTANICAL/COMMON NAME	SIZE	ROOT	COMMENTS
	SHRUBS				
AM		Azalea indica 'Marianne' 'Royal Beauty'	#5	Cont.	24" Spc., Full, Matched
		Black Chokeberry			Full, Matched
CS		Cornus verticillata 'Rubus'	#5	Cont.	24" Spc., Full, Matched
		Dwarf Redtwig Dogwood			Full, Matched
IG		Ilex glabra 'Shamrock'	#5	Cont.	24" Spc., Full, Matched
		Indigo			Full, Matched
IV		Ilex verticillata 'Red Spire'	#5	Cont.	24" Spc., Full, Matched
		Dwarf Winterberry			Full, Matched
	PERENNIALS & GRASSES				
ASC		Asclepias tuberosa	#4	Cont.	12" O.C.
		Butterfly Weed			Matched
IRI		Iris versicolor	#4	Cont.	12" O.C.

DATE	09/27/2019	DESIGNED AS	AS	CHECKED	JIT
PROJECT	1807200	DRAWN AS	AS		
		MARK DATE			
		REVISIONS			
		DESCRIPTION			
		BY			

RRMM ARCHITECTS
2120 South Baltimore Street, Suite 100
Arlington, Virginia 22206
(703)998-0101

100% DESIGN DEVELOPMENT

ROBERT COLEMAN ELEMENTARY SCHOOL ADDITION AND RENOVATION
PLANTING PLAN
60 WINDSOR AVE, BALTIMORE, MD 21216

Proposed 1st Floor Plan

Department Legend

- 01 ADMINISTRATION
- 02 STUDENT SERVICES
- 03 TEACHING AND LEARNING
- 06 FINE ARTS
- 09 PHYSICAL EDUCATION
- 11 FOOD SERVICES
- 12 BUILDING SERVICES
- 13 COMMUNITY SPACE

- 1 Dining (Cafetorium)
- 2 Gym
- 3 Music Room
- 4 Art Room



STUDENT SERVICES

ADMIN

CANOPY ABOVE

Proposed 2nd Floor Plan

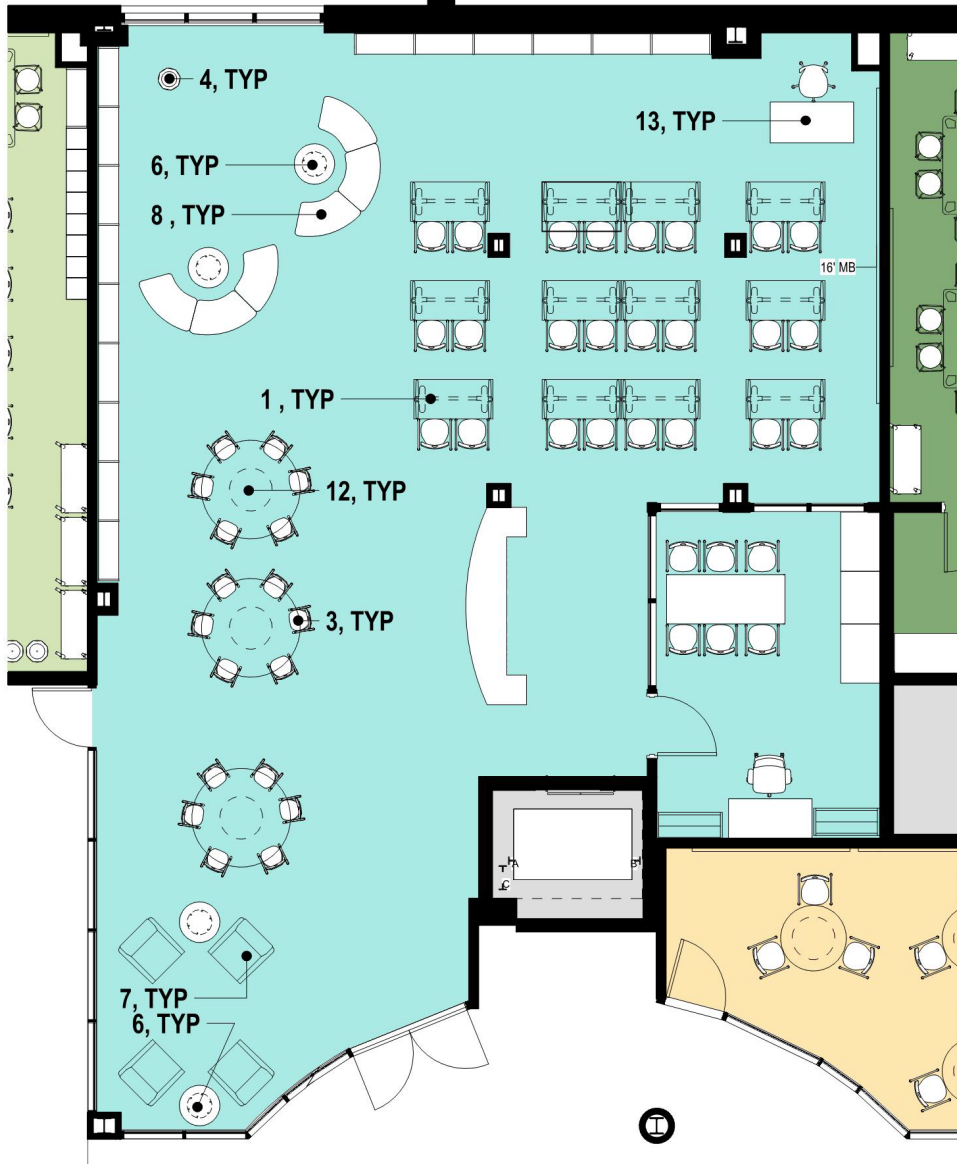
Department Legend

- 01 ADMINISTRATION
- 02 STUDENT SERVICES
- 03 TEACHING AND LEARNING
- 06 FINE ARTS
- 09 PHYSICAL EDUCATION
- 11 FOOD SERVICES
- 12 BUILDING SERVICES
- 13 COMMUNITY SPACE

- 1** Media Center
- 2** Special Education
- 3** Science Room



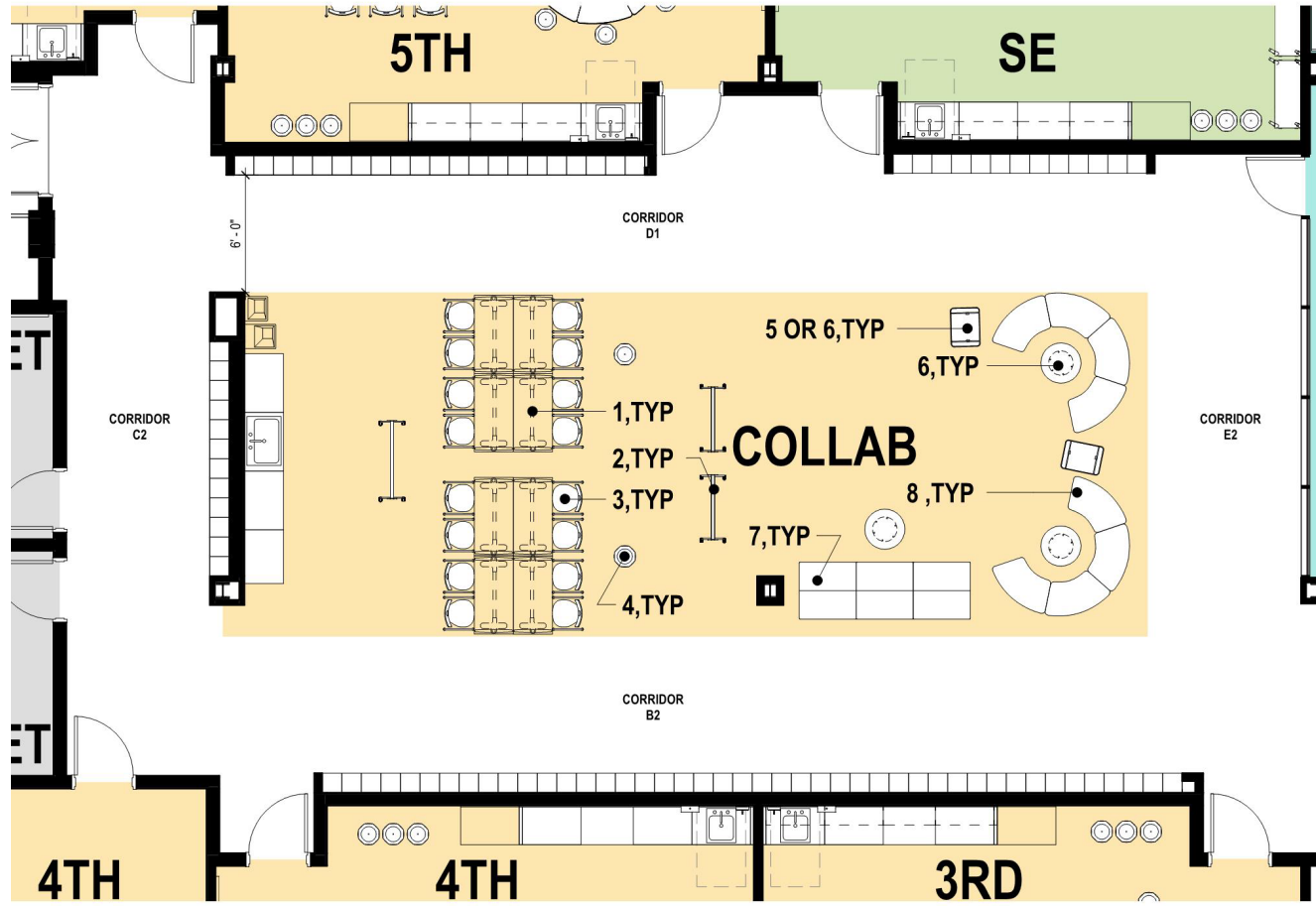
AREA FOCUS: MEDIA CENTER



1	MULTI-USE TABLE	
2	VISUAL BOARD (WHITE BOARD)	
3	STUDENT DESK CHAIR-SMALL	
4	STOOL	

5	LECTERN/ ADJUSTABLE DESK	
6	CURVE	
7	CUBE	
8	WEDGE 45 degree	

AREA FOCUS: COLLABORATIVE SPACE



1	MULTI-USE TABLE	
2	VISUAL BOARD (WHITE BOARD)	
3	STUDENT DESK CHAIR-SMALL	
4	STOOL	

5	LECTERN/ ADJUSTABLE DESK	
6	CURVE	
7	CUBE	
8	WEDGE 45 degree	

VIEW LOOKING FROM VEHICLE ENTRY



MAIN ENTRANCE



Questions?

CONTACTS

Ivy McNeill

idmcneill01@bcps.k12.md.us

21st Century School Buildings
Program Office
(443) 642-4600

www.baltimore21stcenturyschools.org



Instagram

@21stCSBaltimore

Twitter

@21stCSBaltimore

Facebook

@21stCenturySchoolBuildingsProgram

Thank You!



This presentation is brought to you by the
21st Century School Buildings Program.

www.baltimore21stcenturyschools.org

21st Century School Buildings Program

Baltimore City Public Schools
200 East North Avenue Room 407-B
Baltimore MD 21202
(443) 642-4600

Dorothy Hellman

Executive Director, 21st Century Schools
Baltimore City Public Schools

Gary McGuigan

Senior Vice President, Capital Development Division
Maryland Stadium Authority

James T. Smith, Jr.

Chief of Strategic Alliances
City of Baltimore

Robert Gorrell

Executive Director, Public School Construction Program
State of Maryland

