



21st Century School Buildings Program

Commodore John Rodgers Elementary/Middle School

COMMUNITY MEETING – CONSTRUCTION UPDATE

September 18, 2025

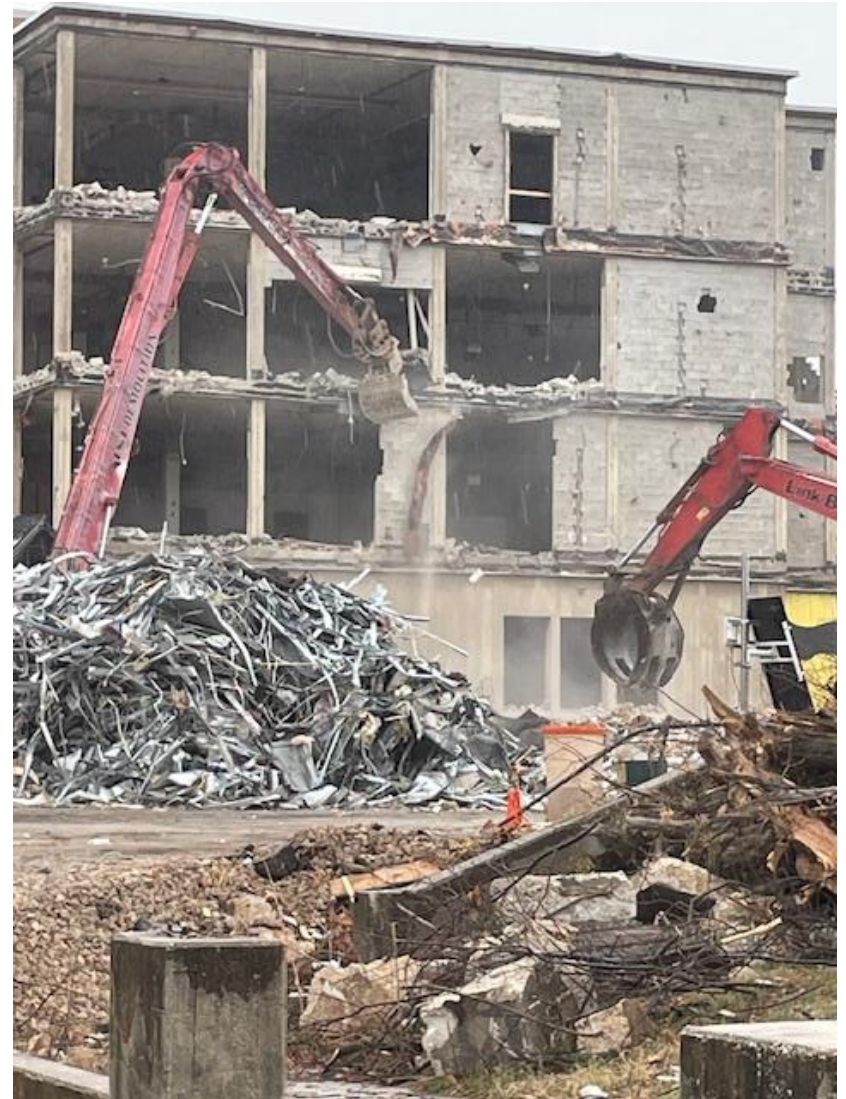
Presenters	Agenda
<p>Ivy McNeill Senior Program Manager – Community Engagement 21st Century School Buildings Program</p> <p>Cyndi Smith Executive Director, Facilities Planning, Design and Construction – Baltimore City Public Schools</p> <p>Charlie Ravenna Project Director Maryland Stadium Authority</p> <p>Construction Manager CAM Construction</p>	<ul style="list-style-type: none">• Procurement Update• Work Progress• Schedule• Site Plan• Floor Plans• Renderings• Q&A

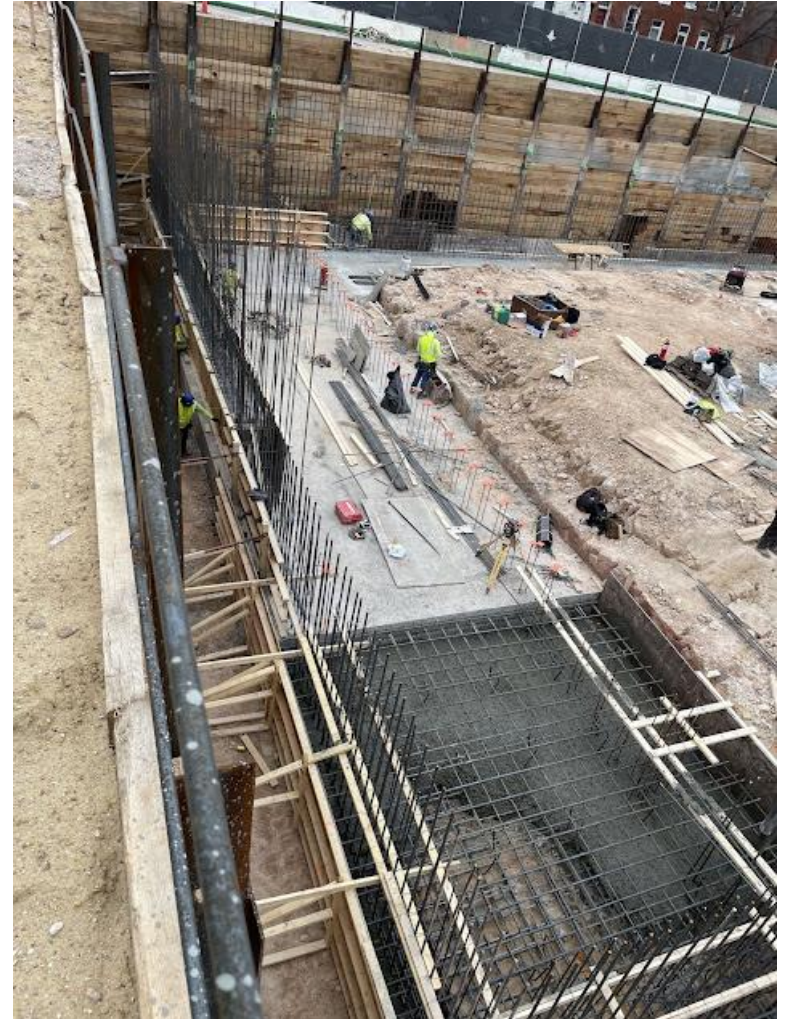


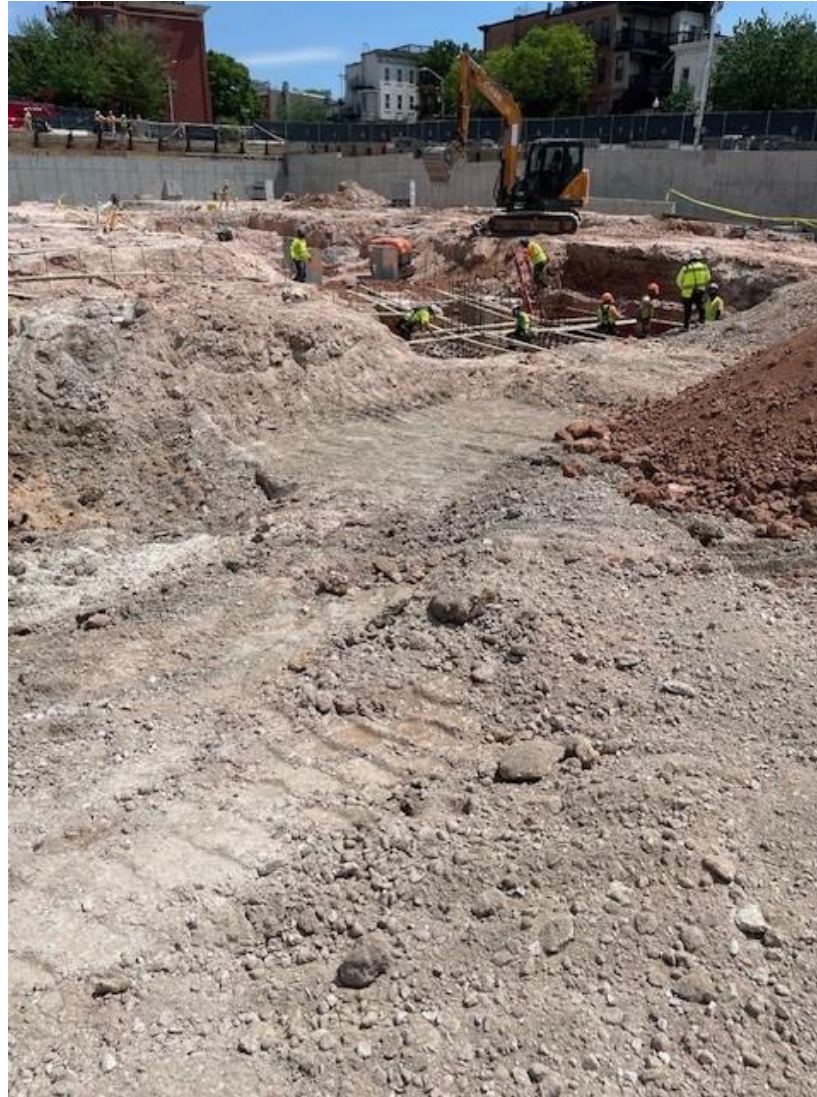
- The State of Maryland Board of Public Works (BPW) approvals:
 - Pre-Construction Services Contract to CAM Construction, August 7, 2024.
 - CAM Construction GMP-1, October 2, 2024.
 - CAM Construction GMP 2, December 4, 2024.
- The only remaining procurement is Furnishing Furniture & Equipment (FFE) which is being procured by City Schools and will not begin the procurement process until the Late Summer / Fall 2025



- CMU foundations & concrete floor slab-on-grade started May 2025 and finished Aug 2025.
- CMU bearing walls above grade are underway and will continue through December 2025. Bearing walls then interior walls.
- Structural steel started in Aug 2025 and will continue through December 2025. Areas A-B to C
- Elevated concrete floor slabs will follow structural steel areas A-B to C. 2nd floors then 3rd floors.
- Building envelope walls will follow the elevated concrete slabs and will continue through Winter 2025/2026.
- Street utilities are underway and will continue through Spring 2026. From the street onto site then to the building following the building envelope.









Commodore John Rodgers E/MS
Community Meeting | Construction Update
September 18, 2025





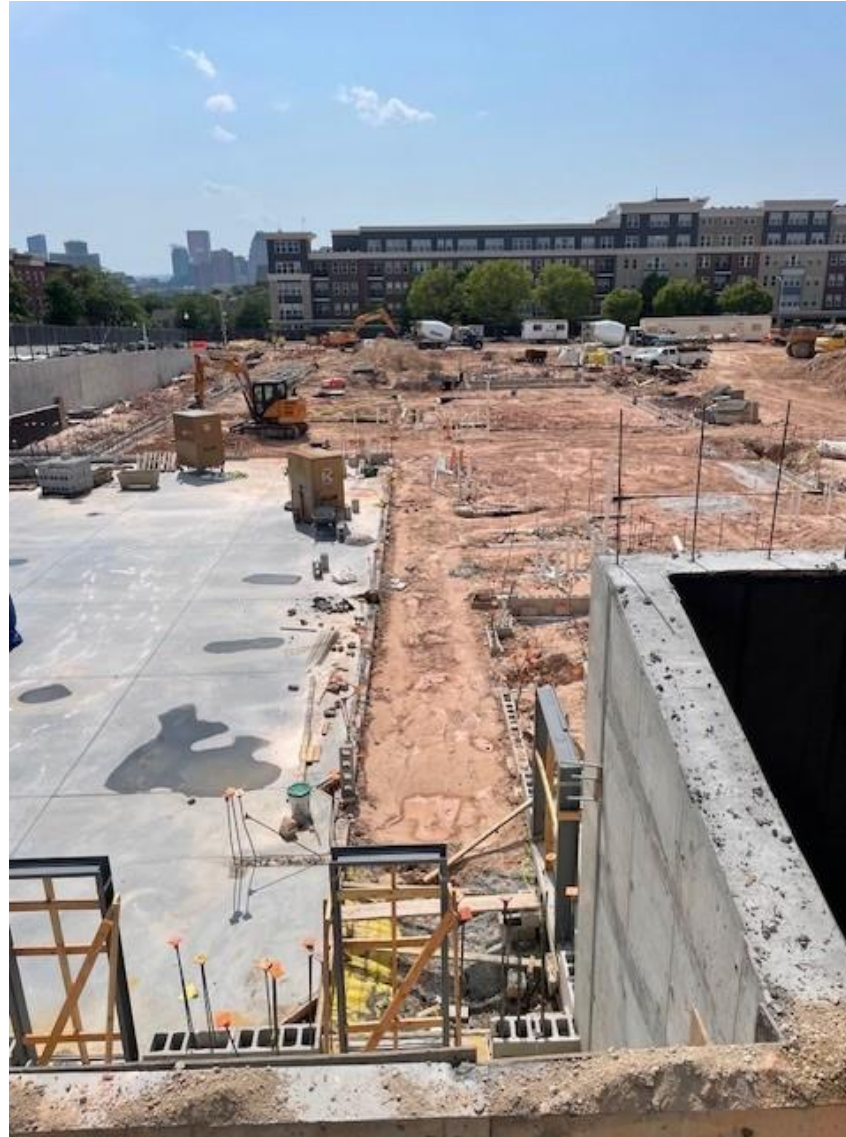
Commodore John Rodgers E/MS
Community Meeting | Construction Update
September 18, 2025



Commodore John Rodgers E/MS
Community Meeting | Construction Update
September 18, 2025



Commodore John Rodgers E/MS
Community Meeting | Construction Update
September 18, 2025



Commodore John Rodgers E/MS
Community Meeting | Construction Update
September 18, 2025



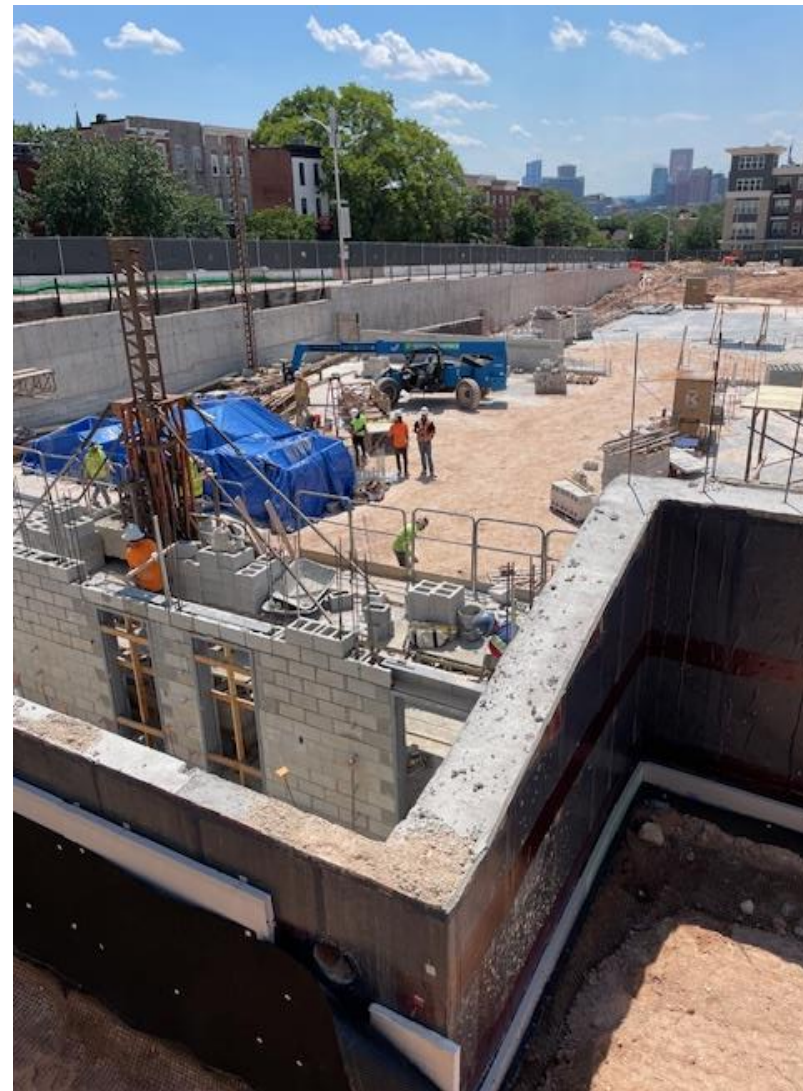
Commodore John Rodgers E/MS
Community Meeting | Construction Update
September 18, 2025





Commodore John Rodgers E/MS
Community Meeting | Construction Update
September 18, 2025





Commodore John Rodgers E/MS
Community Meeting | Construction Update
September 18, 2025



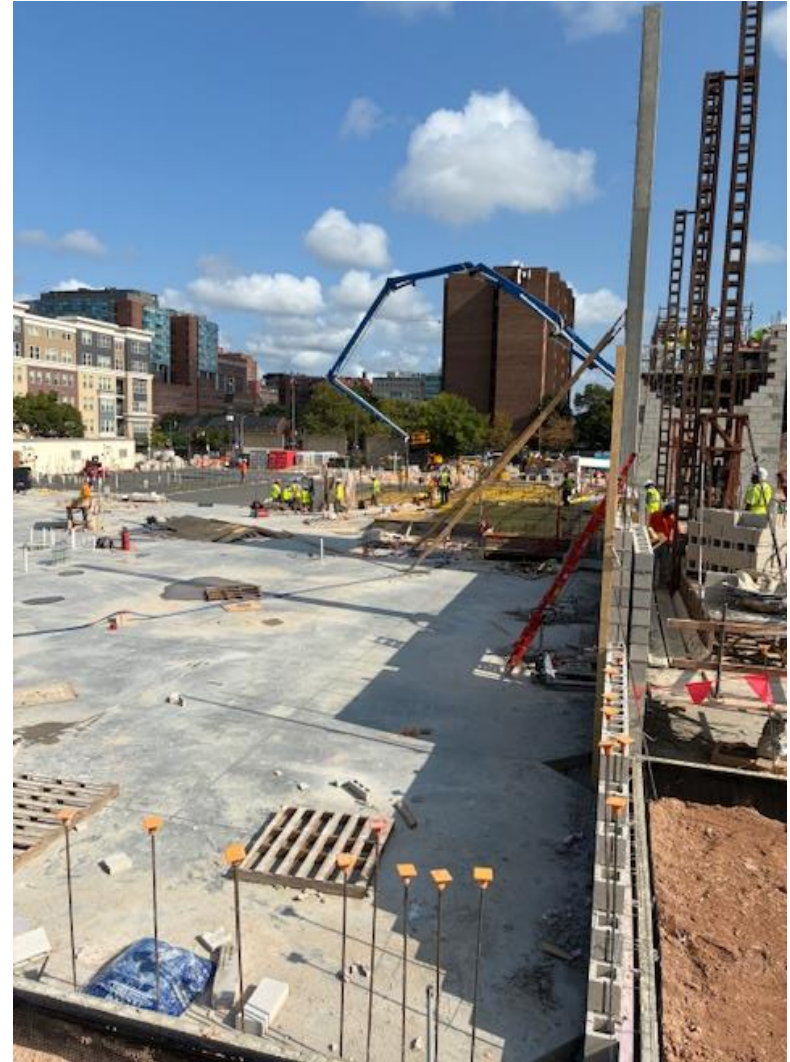
Commodore John Rodgers E/MS
Community Meeting | Construction Update
September 18, 2025



Commodore John Rodgers E/MS
Community Meeting | Construction Update
September 18, 2025



Commodore John Rodgers E/MS
Community Meeting | Construction Update
September 18, 2025

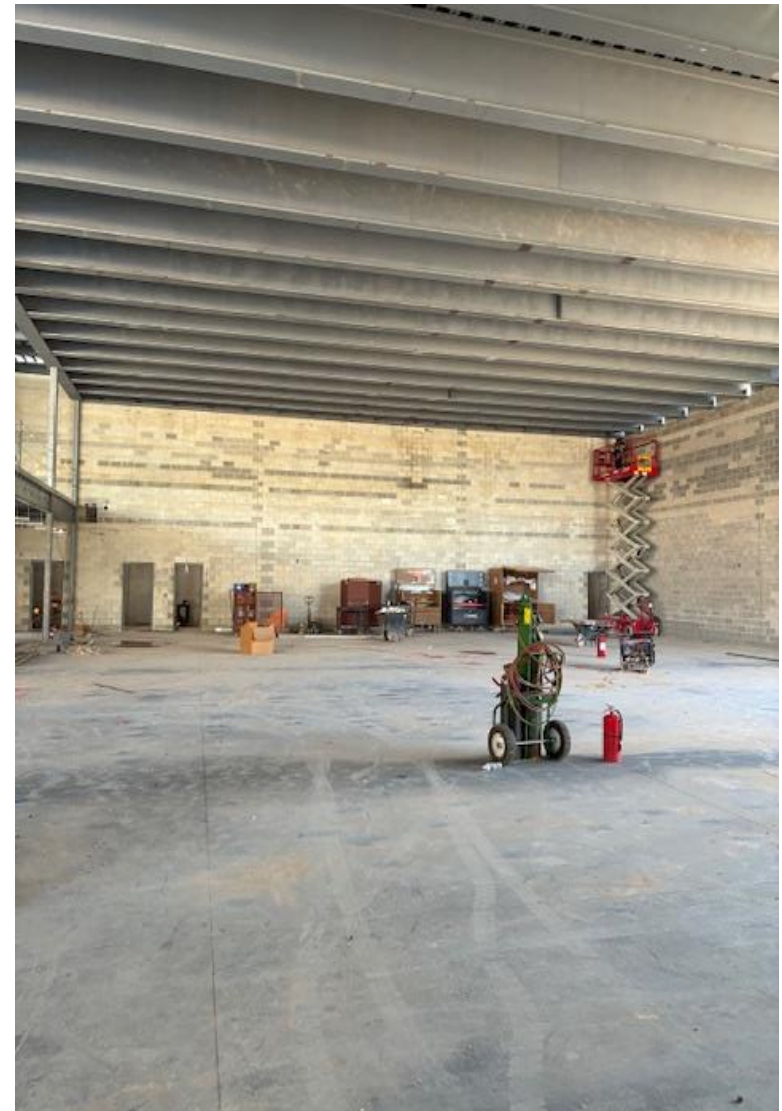




Commodore John Rodgers E/MS
Community Meeting | Construction Update
September 18, 2025



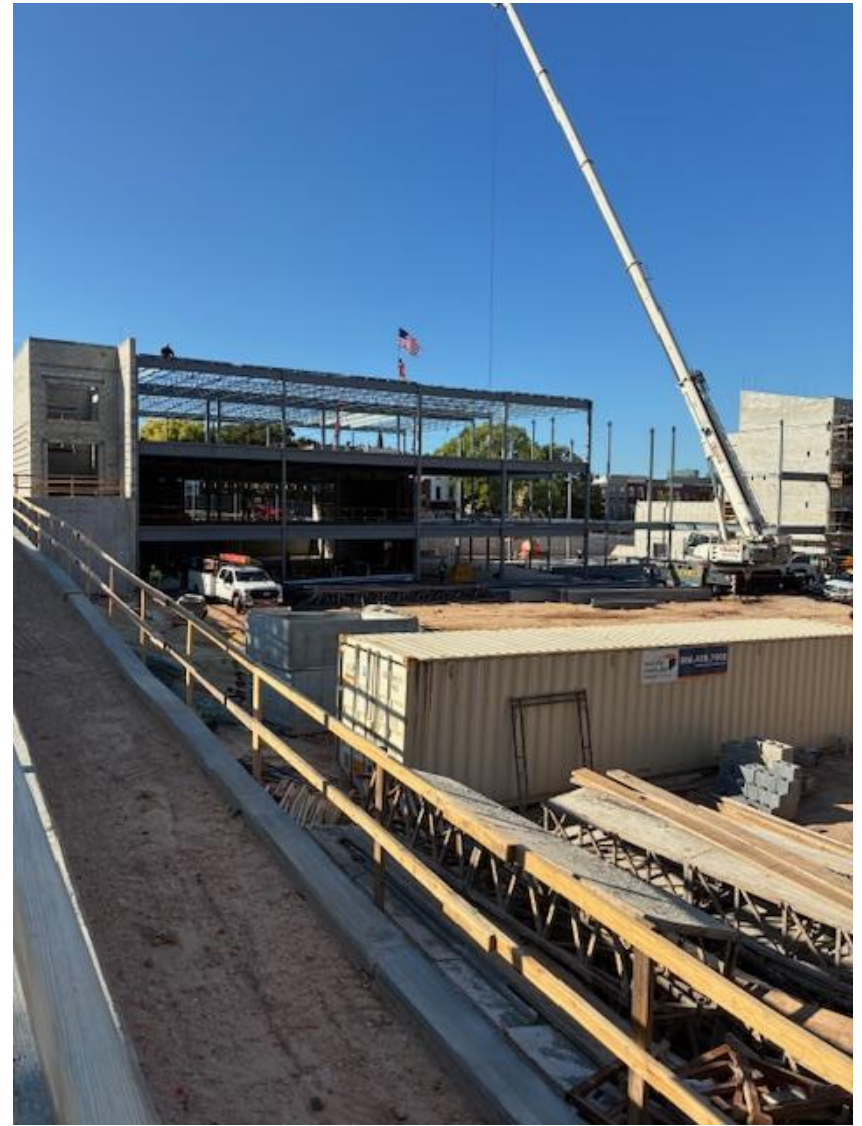
Commodore John Rodgers E/MS
Community Meeting | Construction Update
September 18, 2025



Commodore John Rodgers E/MS
Community Meeting | Construction Update
September 18, 2025



Commodore John Rodgers E/MS
Community Meeting | Construction Update
September 18, 2025





Commodore John Rodgers E/MS
Community Meeting | Construction Update
September 18, 2025



Commodore John Rodgers E/MS
Community Meeting | Construction Update
September 18, 2025



Commodore John Rodgers E/MS
Community Meeting | Construction Update
September 18, 2025



Commodore John Rodgers E/MS
Community Meeting | Construction Update
September 18, 2025

Abatement then Demolition Start:	Oct 7, 2024
Parking Lane & Sidewalk Closures Adjacent to the Building Start:	Oct 15, 2024
Building Construction Start:	Spring 2025
Substantial Completion:	November 30, 2026*
Occupancy:	December 2026*

** Dates listed are based on a projected schedule and are subject to change.*



Site Features

- Main entrance on N. Washington Ave. – provides bus and vehicular access at main entrance location
- Secure play area from northeast neighborhood at N. Chester Street

Safety & Security

- Defined main entrance at bus and parent drop-off
- Three separate and secured play areas
- Dedicated staff, visitor, and community parking totaling 34 spaces

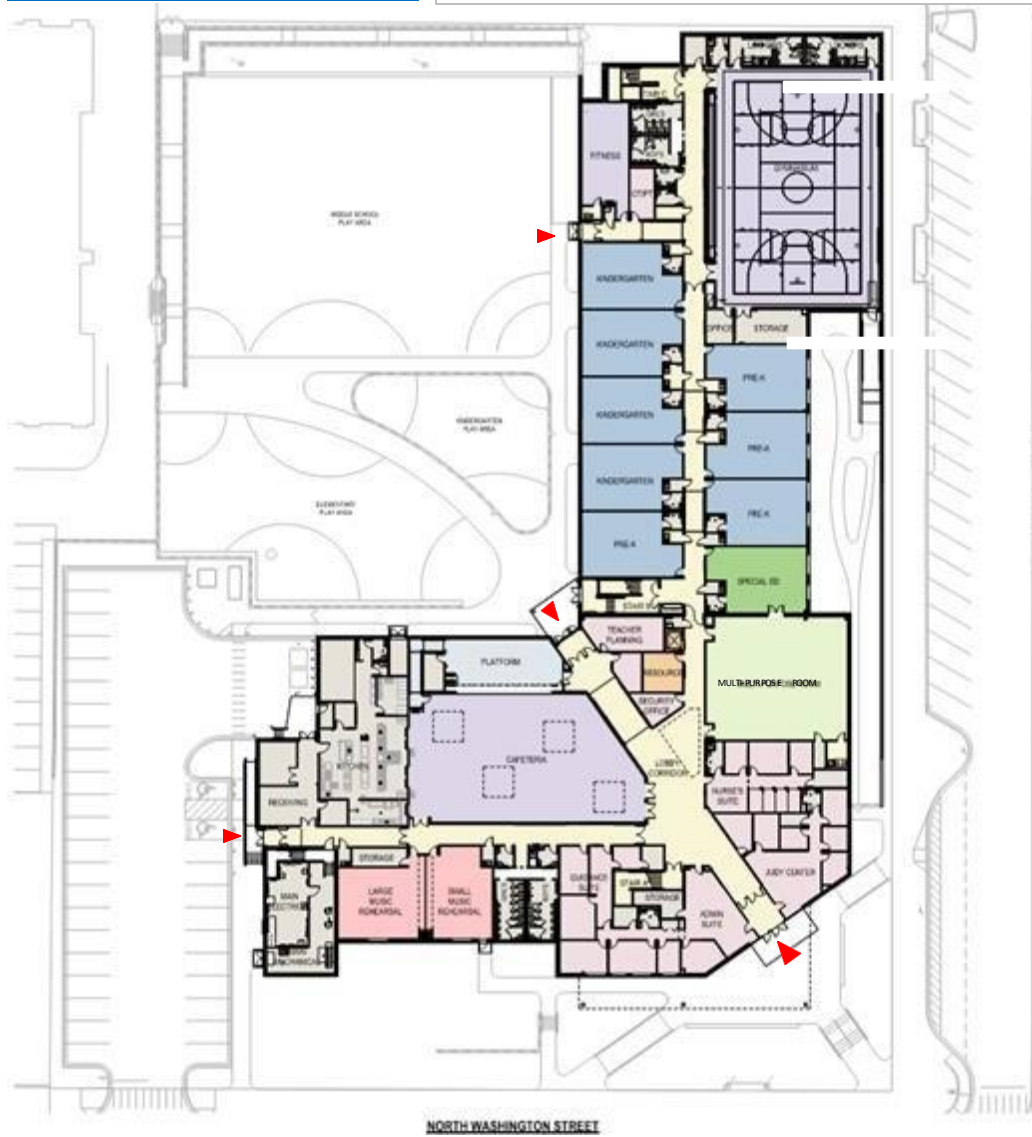
Site Opportunities

- Re-oriented building and site to optimize use of available space

Pedestrian Circulation & Community Connectivity

- Main entrance and parking provide access to all community support spaces.



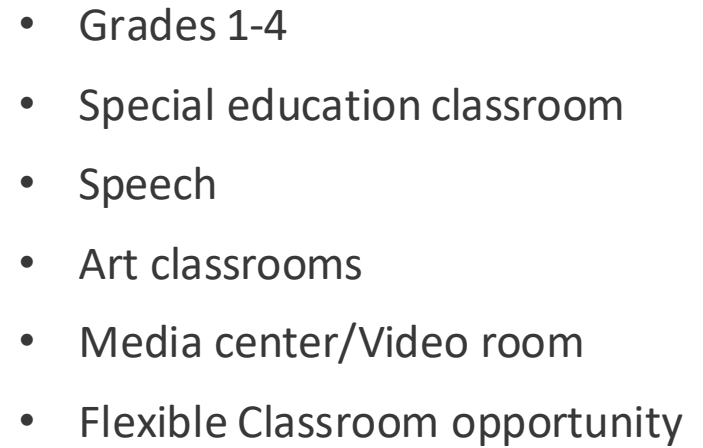


- Pre-K-Kindergarten grades
- Special education classroom
- Music classrooms
- Multi-Purpose Room
- Gym/Fitness and support spaces
- Cafetorium/Platform
- Teacher Planning
- Administration
- Guidance
- Health suite
- Family resource room
- Judy Center

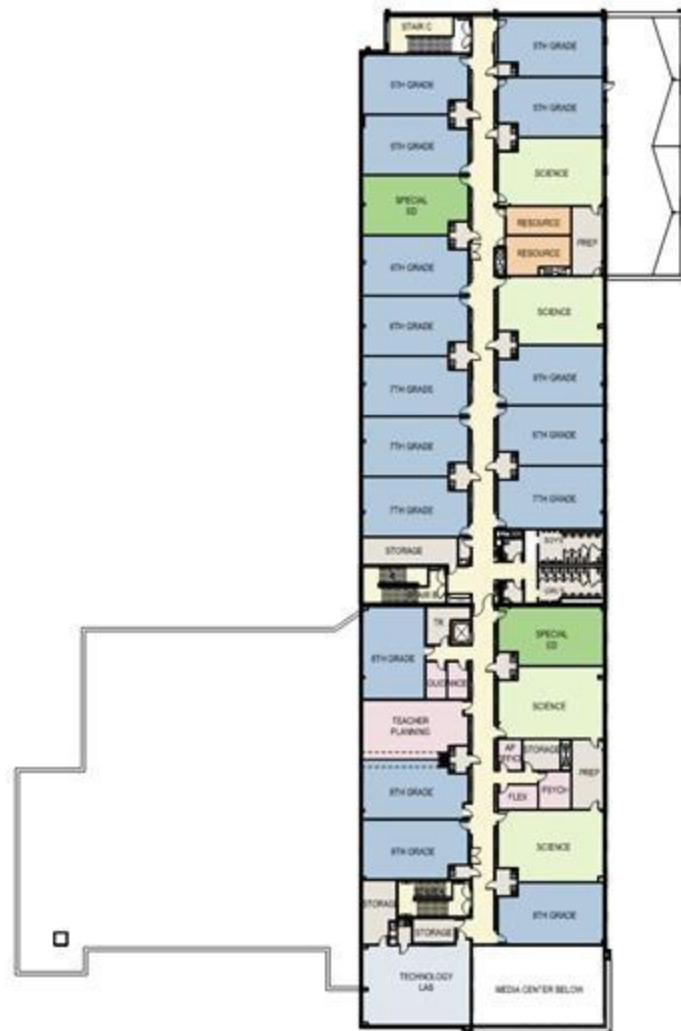


First Floor GSF: 53,43 SF
Overall SF: 118,073 SF

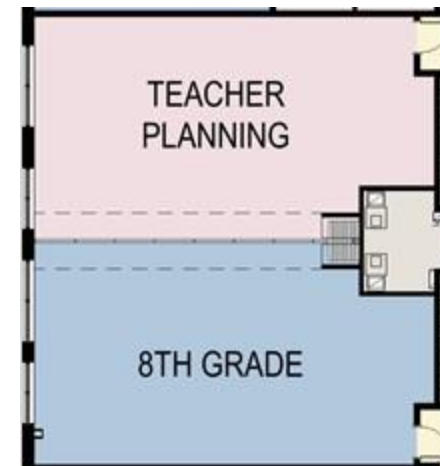
Commodore John Rodgers E/MS
Community Meeting | Construction Update
September 18, 2025



Commodore John Rodgers E/MS
Community Meeting | Construction Update
September 18, 2025



- Grades 5-8
- Special education classrooms
- Science classrooms
- Technology lab
- Resource rooms
- Flexible Teacher Planning



Third Floor GSF: 32,802 SF
Overall SF: 118,073 SF

Commodore John Rodgers E/MS
Community Meeting | Construction Update
September 18, 2025





CR

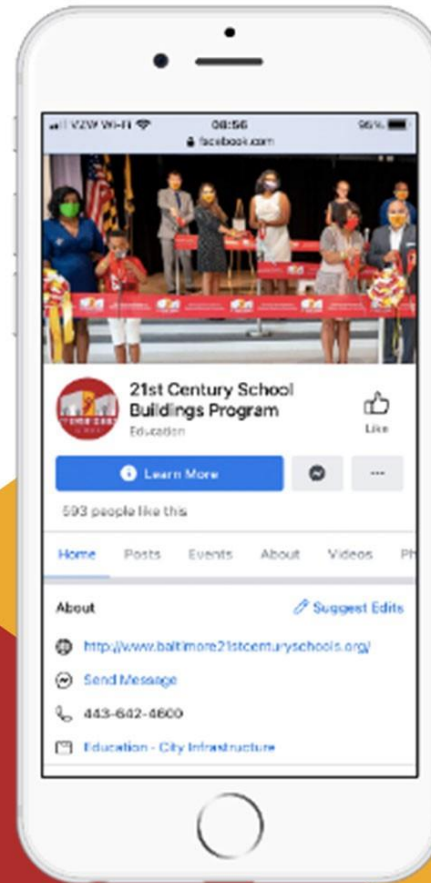
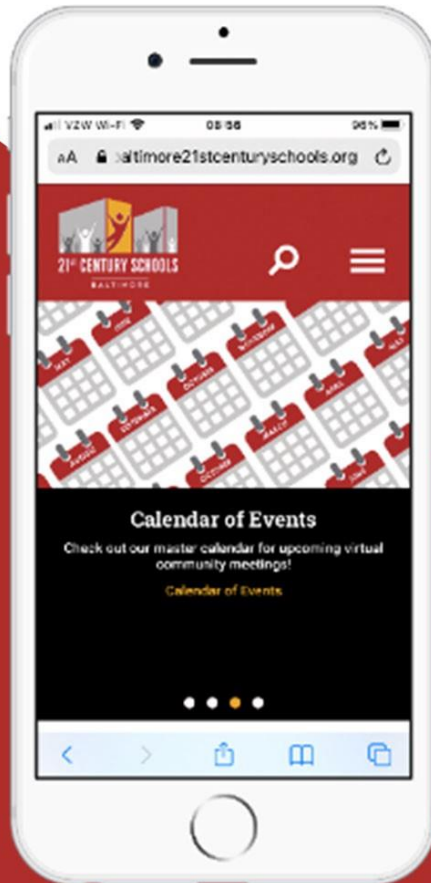






Baltimore21stCenturySchools.org

FaceBook.com/
21stCenturySchoolBuildingsProgram



Questions?

Program Contacts

Sr. Community & Public Relations Coordinator

Ivy McNeill

idmcneill01@bcps.k12.md.us

Director Community

Engagement & Strategic Partnerships

TaMikka Sykes

TCSykes@bcps.k12.md.us

Program Information

21st Century School Buildings Program Office

(443) 642-4600



21stCSBaltimore



21stCenturySchoolBuildingsProgram



21stCSBaltimore

Thank You.

This presentation was brought to you by the Baltimore City Schools Office of New Initiatives



Baltimore City Public Schools

200 East North Avenue Room 407-B

Baltimore MD 21202

(443) 642-4600

www.baltimore21stcenturyschools.org

BALTIMORE CITY
PUBLIC SCHOOLS

