

# BALTIMORE CITY PUBLIC SCHOOLS EDUCATIONAL SPECIFICATIONS

PART 3: SITE SPECIFIC EDUCATIONAL SPECIFICATIONS

ROBERT POOLE BUILDING #56

JULY 15, 2014



PREPARED BY: JRS ARCHITECTS, INC. AND CITY SCHOOLS STAFF

IMAGE CREDIT: GRIMM AND PARKER INC.

# BALTIMORE CITY BOARD OF SCHOOL COMMISSIONERS

*Shanaysha Sauls*

*Chair*

*David Stone*

*Vice-Chair*

*Lisa Akchin*

*Commissioner*

*Cheryl A. Casciani*

*Commissioner*

*Linda Chinnia*

*Commissioner*

*Marnell A. Cooper*

*Commissioner*

*Robert Heck*

*Commissioner*

*Tina Hike-Hubbard*

*Commissioner*

*Peter Kannam*

*Commissioner*

*Eddie Hawkins*

*Student Commissioner*

# **BALTIMORE CITY PUBLIC SCHOOLS DISTRICT OFFICE**

Office of Engagement

Office of Networks

Chief Academic Office

Chief Staff Office

Chief Operations Office

Office of New Initiatives

## **BALTIMORE CITY SCHOOL COMMUNITY**

Operator, Principal, and Staff of Academy for College and Career Exploration (ACCE)

Operator, Principal, and Staff of Independence School Local I High School

Community and Partners of Academy for College and Career Exploration (ACCE)

Community and Partners of Independence School Local I High School

Parents and Students of Academy for College and Career Exploration (ACCE)

Parents and Students of Independence School Local I High School

## BALTIMORE CITY ARCHITECTURAL TEAM

JRS Architects, Inc.

- *Tom Casey*
- *Ann Castro*
- *Kristen Martinez*
- *Eric Shore*
- *John Srygley*

## BALTIMORE CITY ACKNOWLEDGEMENTS

*Dr. Gregory Thornton*

*Chief Executive Officer*

*Linda Chen*

*Chief Academic Officer*

*Naomi Gubernick*

*Chief of Staff*

*J. Keith Scroggins*

*Chief Operations Officer*

*Donald R. Kennedy, Sr.*

*Chief Financial Officer*

*Lisa Grillo*

*Human Capital Officer*





# PART 3

## SITE-SPECIFIC EDUCATIONAL SPECIFICATIONS SECTIONS

### Part 1: General Requirements (under separate cover)

---

- A. Executive Summary
- B. City Schools' Mission
- C. City Schools' Portfolio
- D. School Safety and Security
- E. Community Use Guidelines
- F. Sustainability
- G. Instructional Technology
- H. General Design Criteria
- I. Building Design Criteria
- J. Site Design Criteria
- K. Project Specific Educational Specifications
- L. Additional Educational Specification Content

### Part 2: Prototype Specific Requirements (under separate cover)

---

Volume I PK to 5 Prototype

Volume II PK to 8 Prototype

**Volume III 6 to 12 Prototype**

Volume IV 9 to 12 Prototype

### Part 3: Site Specific Educational Specifications (General Requirements)

---

A.	Project Summary	1
B.	Project Background	4
C.	Project Educational Programs and Services	11
D.	General Project Design Criteria (Optional)	-
E.	Existing Site Conditions (Optional)	-
F.	Proposed Site Requirements	16
G.	Existing Building Systems Conditions (Optional)	-
H.	Proposed Building Systems Requirements (Optional)	-
I.	General School Design Criteria (Optional)	18
J.	Individual Space Descriptions	21
K.	Graphic Summary of Spatial Relationships (Optional)	-
L.	Summary of Spatial Requirements	30





# PART 3

## SITE SPECIFIC EDUCATIONAL SPECIFICATIONS

### TABLE OF CONTENTS

<p><b>A. PROJECT SUMMARY.....1</b></p> <p>1. PROJECT JUSTIFICATION</p> <p>2. PROJECT DESCRIPTION</p> <p>3. PROPOSED SCHEDULE</p> <p>4. FACILITY SUMMARY</p> <p>5. LOCATION MAP</p> <p><b>B. PROJECT BACKGROUND.....4</b></p> <p>1. COMMUNITY DESCRIPTION AND HISTORY</p> <p>2. SCHOOL DESCRIPTION AND HISTORY</p> <p>3. EXISTING SITE PLANS, FLOOR PLANS, AND PHOTOGRAPHS</p> <p>4. SUMMARY OF RECENT FEASIBILITY STUDIES OR ASSESSMENTS</p> <p><b>C. PROPOSED EDUCATIONAL PROGRAMS AND SERVICES.....11</b></p> <p>1. SCHOOL GRADE ORGANIZATION</p> <p>2. PROPOSED CURRICULUM AND INSTRUCTIONAL METHODS AND TRENDS</p> <p>3. PROPOSED STAFFING</p> <p>4. ENROLLMENT PROJECTIONS</p> <p>5. FUTURE PROGRAMS AND SERVICES</p> <p><b>D. GENERAL PROJECT DESIGN CRITERIA (NOT INCLUDED)</b></p> <p><b>E. EXISTING SITE CONDITIONS (NOT INCLUDED)</b></p> <p><b>F. PROPOSED SITE REQUIREMENTS.....16</b></p> <p>1. PARKING — BUS, CAR, DELIVERY, SERVICE, STAFF, VISITOR</p> <p>2. SERVICE ACCESS</p> <p>3. VEHICLE AND PEDESTRIAN ACCESS</p> <p>4. PLAYING FIELDS/COURTS/YARDS</p> <p>5. NATURAL ENVIRONMENTAL AREAS</p> <p>6. UTILITIES</p> <p>7. OTHERS</p> <p><b>G. EXISTING BUILDING SYSTEMS CONDITIONS (NOT INCLUDED)</b></p> <p>*Sections not included are provided in the school specific feasibility study.</p>	<p><b>H. PROPOSED BUILDING SYSTEMS REQUIREMENTS (NOT INCLUDED)</b></p> <p><b>I. GENERAL SCHOOL DESIGN CRITERIA.....18</b></p> <p>1. OVERALL BUILDING ORGANIZATION (NOT INCLUDED)</p> <p>2. FUNCTIONAL RELATIONSHIPS (NOT INCLUDED)</p> <p>3. ADMINISTRATIVE AREAS (NOT INCLUDED)</p> <p>4. INSTRUCTIONAL AREAS (NOT INCLUDED)</p> <p>5. SUPPORT AREAS (NOT INCLUDED)</p> <p>6. COMMUNITY USE AREAS (NOT INCLUDED)</p> <p>7. SPECIAL OR UNIQUE PROGRAMS REQUIREMENTS</p> <p><b>J. INDIVIDUAL SPACE DESCRIPTIONS.....21</b></p> <p>1. NAME OF SPACE</p> <p>2. PROPOSED ACTIVITIES</p> <p>3. NUMBER/TYPE/GROUPINGS OF USERS</p> <p>4. AREA, HEIGHT, VOLUME REQUIREMENTS</p> <p>5. RELATIONSHIPS TO OTHER SPACES</p> <p>6. STORAGE REQUIREMENTS</p> <p>7. DISPLAY AND PROJECTIONS REQUIREMENTS</p> <p>8. PROPOSED FURNITURE AND EQUIPMENT</p> <p>9. ACOUSTICAL REQUIREMENTS</p> <p>10. FLOOR, WALL, CEILING FINISHES</p> <p>11. MECHANICAL, ELECTRICAL, PLUMBING REQUIREMENTS</p> <p>12. SPECIAL SYSTEMS</p> <p>13. TELECOMMUNICATIONS SYSTEMS</p> <p><b>K. GRAPHIC SUMMARY OF SPATIAL RELATIONSHIPS (NOT INCLUDED)</b></p> <p><b>L. SUMMARY OF SPATIAL REQUIREMENTS.....32</b></p> <p>1. NAME OF SPACE</p> <p>2. EXISTING/PROPOSED QUANTITY</p> <p>3. EXISTING/PROGRAMMED AREA OF BUILDING IN NET SQUARE FEET</p> <p>4. TOTAL EXISTING/PROGRAMMED AREA OF BUILDING IN NET SQUARE FEET</p> <p>5. EXISTING/PROPOSED BUILDING EFFICIENCY (NSF/GSF)</p> <p>6. TOTAL EXISTING/PROPOSED BUILDING AREA IN GROSS SQUARE FEET</p>
--	---

# A. PROJECT SUMMARY

# A. PROJECT SUMMARY

## A.1 Project Justification:

Robert Poole Building #56 currently has a poor Facility Conditions Index (FCI) and Educational Adequacy Score (EAS) based on the previously completed 2010 Jacobs building assessment report. In addition, the recommended co-location of Independence School Local 1 HS #333 with Academy for College and Career Exploration TS #427 (ACCE) will affect the enrollment of the building. This educational specification represents two schools. Robert Poole Building #56 has a FCI of 78.4 and an EAS of 55.8. The recommended co-location of Independence School Local 1 HS #333 and consolidation of its students into Robert Poole Building #56 will eliminate excess capacity in the area. The project's construction is planned to be completed by year 2017. In SY 2022-23, it is anticipated that the Robert Poole Building #56 State Rated Capacity will be 989 and with the co-location of Independence School Local 1 HS #333 its projected utilization rate will be 93%.

## A.2 Project Description:

The Robert Poole Building is currently 118,701 square feet and houses ACCE. Independence School Local 1 HS #333, a charter school, is located on the site in a 10,000 square foot modular building. Both schools will be co-located in the Robert Poole Building. The original Robert Poole Building was built in 1922 and also a modular building and two subsequent additions (housing classrooms and cafeteria/kitchen) on site. The new gross footage to meet the program requirements will be approximately 140,224 square feet. ACCE's projected enrollment is 791 in 2022-23, and Independence's projected enrollment is 130 in 2022-23. For the development of the site specific educational specification the 6-12 prototype for a medium-size high school (910) was used for the standard.

## A.3 Tentative Schedule: The items below are based on the CY 2013 10-Year Plan.

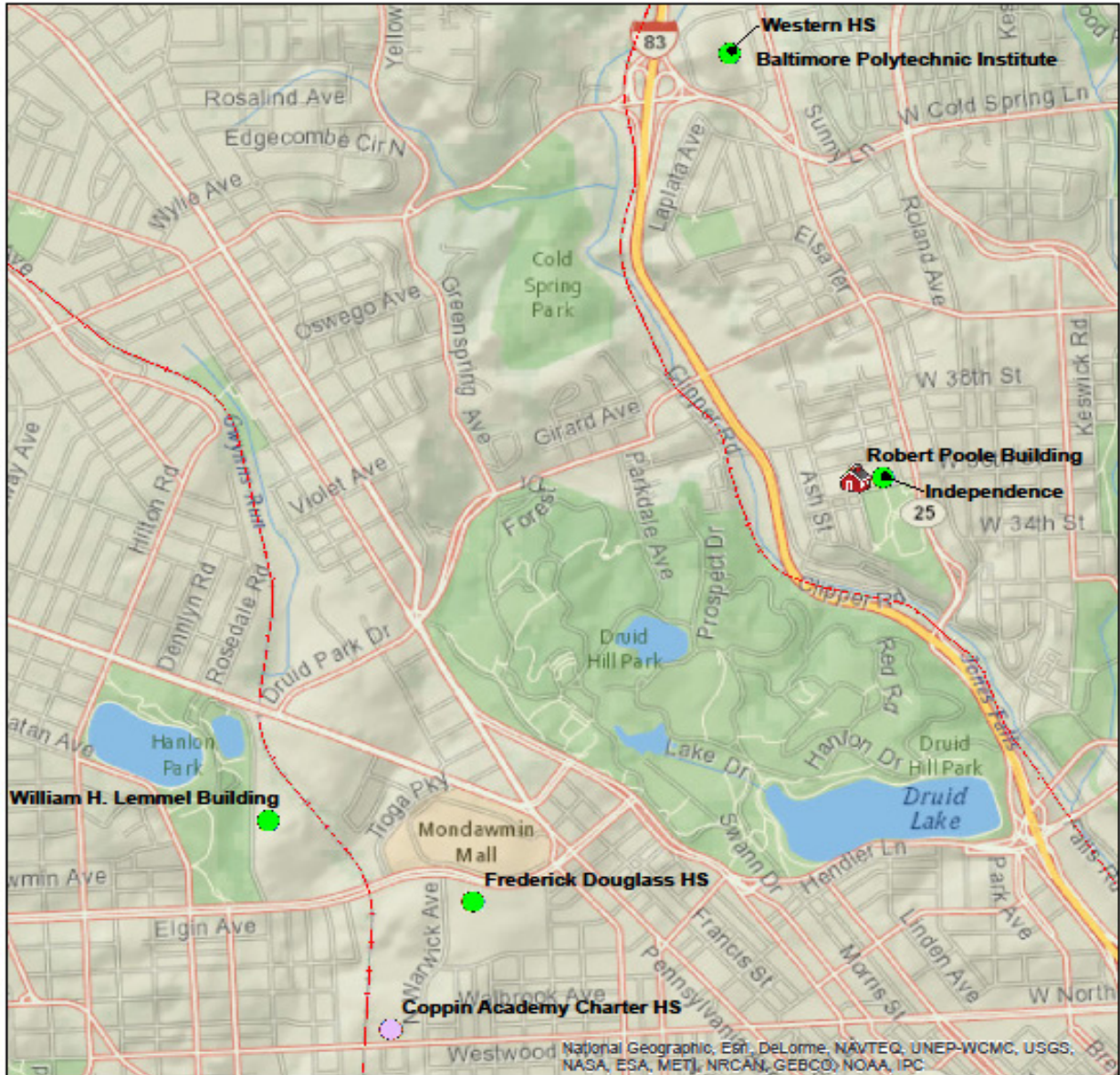
Schedule		
Task	Start	Complete
Educational Specifications	October 2013	June 2014
Feasibility Study	October 2013	July 2014
Schematic Design	July 2014	August 2014
Design Development	September 2014	December 2014
Construction Documents	January 2015	June 2015
Permitting	May 2014	July 2015
Advertise/Bid/Award	July 2014	September 2015
Construction	December 2015	June 2017
Occupancy	June 2017	August 2017

## A.4 Facility Summary:


Facility Summary		
	Current	2022-23 Projected
State Rated Capacity	863	989
Full Time Enrollment	796	921
Enrollment Trend	Growing	
Relocatables	None	
Gross Square Footage	118,701	140,224

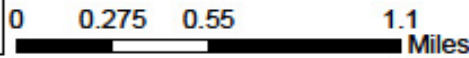
A.5 Location Map:

### Robert Poole Building #56



**Legend**

-  Robert Poole Building
-  Adjacent Schools
-  Adjacent Charter School
-  Rail Line




Baltimore City Public Schools
GREAT KIDS  
GREAT SCHOOLS

## **B. PROJECT BACKGROUND**

# B. PROJECT BACKGROUND

## **B.1 Community Description and History:**

The Robert Poole and Independence School Communities are composed of the following neighborhoods: Greater Charles Village, Barclay, Medfield, Hampden, Remington, and Woodberry.

Robert Poole Building #56 is located in Community Statistical Area (CSA) #10, which consists of commercial/office/industrial/residential zoning: EC-2, O-S, I-2, R-6 and R-7. This CSA Group experienced a 1% decline in total population and a 2% decline of households with children under 18 between 2000 and 2010. The housing market conditions in this CSA consist of: distressed on the eastern side, transitional in the central area, and stable in the western portion. The total number of residential properties has remained stable during this ten year period, with a slight increase in vacant units. The median sale price of homes has increased in this CSA by 99% between 2001-2010.

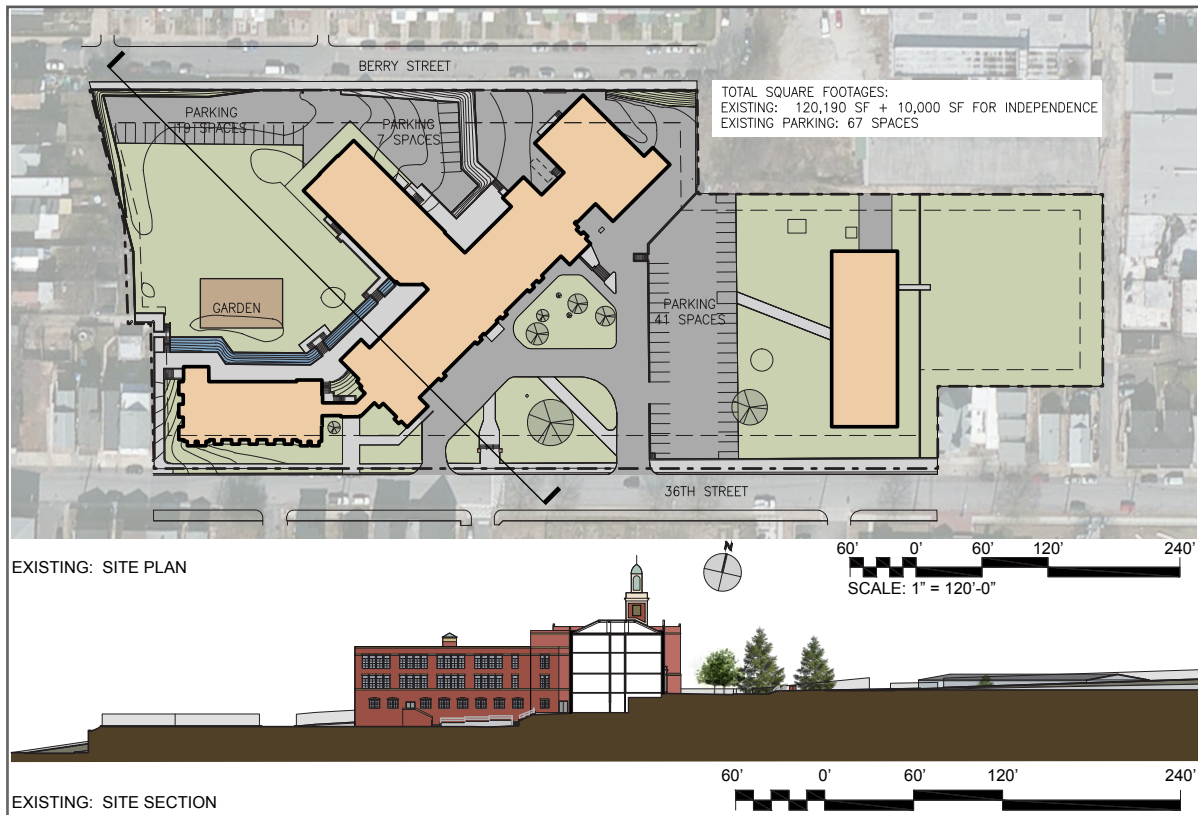
Significant revitalization and redevelopment projects are planned for CSA #10. Johns Hopkins Homewood Community Partners Initiative (anchor-based community development strategy) was completed in 2012, and is currently in its implementation phase. There is also a Barclay-Midway-Old Goucher Small Area Plan (2006), the Charles North Vision Plan (Central Baltimore Partnership, 2008) and a Remington Neighborhood Plan in process (created by the community, Johns Hopkins and the Neighborhood Design Center).

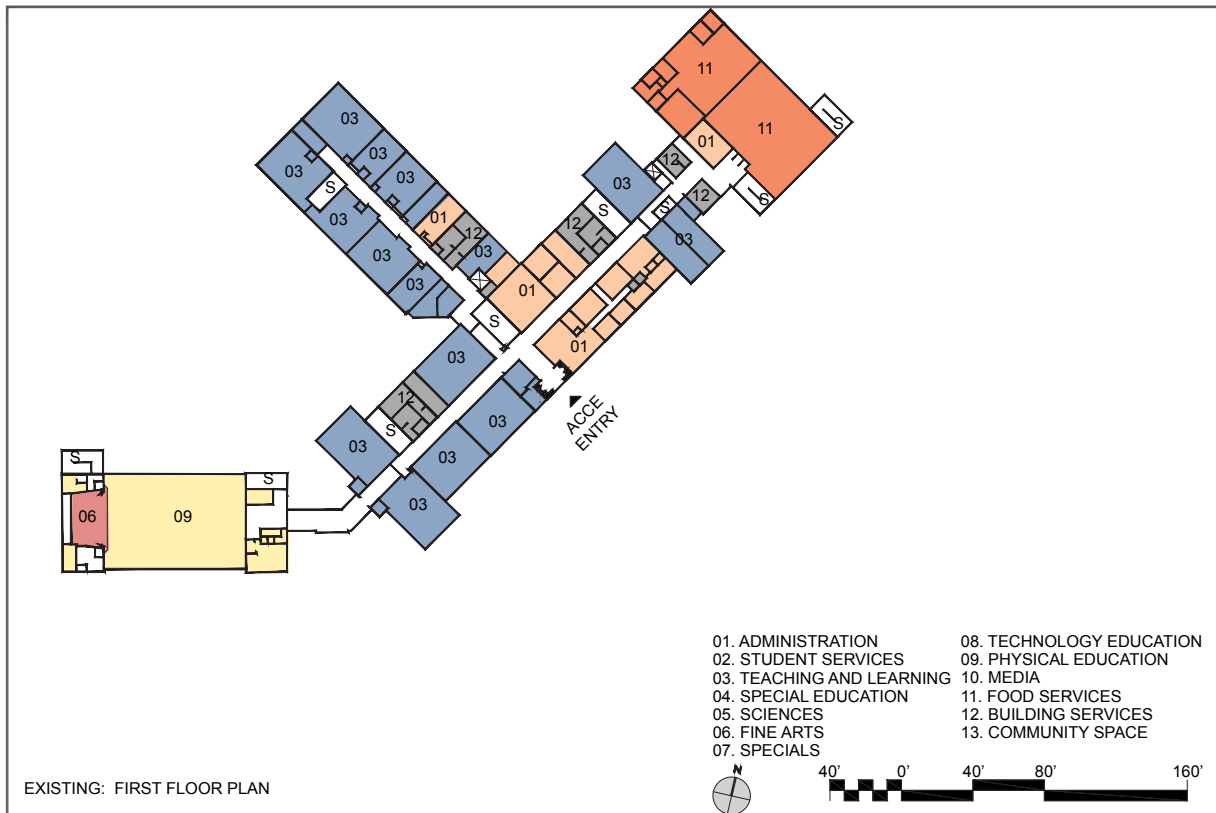
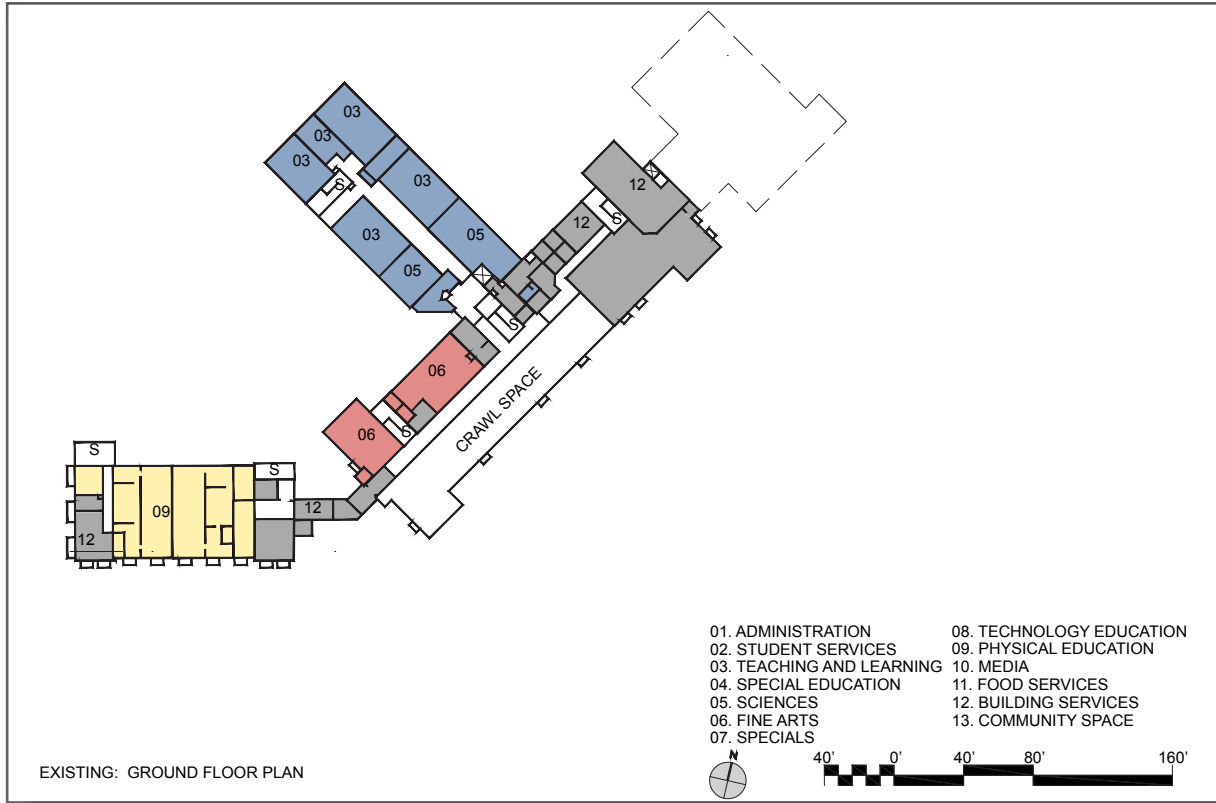
## **B.2 School Description and History:**

Since its opening in 1924 until 2008, the Robert Poole Building #56 housed various grade ranges including; elementary, middle school, and high school. Currently, Robert Poole Building #56 houses Academy for College and Career Exploration (ACCE) TS. ACCE was created and co-located in the Professional Development Center (PDC) #93 in School Year 2004, with grade 9 only. Each consecutive year, an additional grade was added. In School Year 2006, ACCE was relocated from the PDC Building to the Robert Poole Building #56. The ACCE High School program was fully matriculated in School Year 2007 with grades 9-12. ACCE began expanding to a Transformation School in School Year 2009 by adding grade 6. Seventh graders were added in School Year 2010. ACCE's current grade span is 6-12. The 6-12 transformation program was fully matriculated in School Year 2012.

Since its opening in 2007, Independence School Local I HS Charter has operated as a charter high school at modular building #333, which is located on the campus of Robert Poole Building #56. Currently, Independence School Local I HS Charter serves grades 9-12.

**B.3 Existing Site Plans, Floor Plans, and Photographs:**









Exterior:



Interior:





#### **B.4 Summary of Recent Feasibility Studies or Assessments:**

The 10-Year Plan's recommendation for the Robert Poole building, based on the 2010 Jacobs building assessment report, is for the building to be either renovated or replaced. The feasibility study will consider and analyze the various options and provide a determination of the best recommendation. The rationale behind this recommendation is as follows:

- The FCI suggests that renovation or replacement should both be considered. The Robert Poole Building facility has an overall FCI of 78.4%.
- The Robert Poole building has an EAS of 55.8, and does not meet the target score for district buildings used for instruction and therefore does not meet the standard for supporting excellent teaching and learning.
- Currently, the school meets the acceptable utilization rate for City Schools' buildings (65-100%) at 76% with ACCE occupying the building alone.
- The newly renovated or constructed building will include space for ACCE and the Independence School. The sharing of space will increase the total building utilization to a target rate of 75-90%.

## **C. PROPOSED EDUCATIONAL PROGRAMS AND SERVICES**

# C. PROPOSED EDUCATIONAL PROGRAMS AND SERVICES

## C.1 School Grade Organization:

ACCE #427 @ Robert Poole Building #56 is an operator-run transformation school that serves grades 6-12. Independence #333 is a charter school that serves grades 9-12. The building is planned to serve two schools, ACCE and Independence, as co-located in the same building. Based on enrollment projections the school will be a medium sized school to support a capacity of approximately 900 students.

The maximum number of students that reasonably can be accommodated in a classroom without significantly hampering delivery of the educational plan is identified below for each respective grade:

6-8 classrooms	25
9-12 classrooms	25
CTE classrooms	20
Special Education (self contained)	10

## C.2 Proposed Curriculum:

ACCE and Independence will merge CTE programs in the Robert Poole buildings. CTE programs included in the Educational Specifications has been approved by City Schools and MSDE.

**C.3 Proposed Staff:**

Academy for College and Career Exploration #427

<b>Proposed Staff</b>	
Position	Quantity
Assistant Principal	1
Psychologist	1
Librarian	1
Teacher - Elementary	6
Teacher - Secondary	25
Teacher - Special Education	10
Paraeducator	1
Special Education Paraeducator	2
Assistant - Special Education	1
Food Services Worker II/6 hrs	1
Guidance Counselor	1
IEP Team Associate	1
Office Assistant II	1
Principal - High	1
Social Worker	2
Speech Pathologist	1
Teacher - Vocational	1
Food Services Worker I/3.5 hrs	1
Food Services Worker I/6 hrs	1
Staff Associate/10mth	1
Staff Associate/12mth	1
Team Support Paraprofessional	2

Independence Local High I #333

<b>Proposed Staff</b>	
Position	Quantity
Assistant Principal	1
Psychologist	1
Teacher - Secondary	8
Teacher - Special Education	4
Special Education Paraeducator	1
Secretary II - School	1
Social Worker	1
Educational Associate/12mth	1

C.4 Enrollment Projections (SY13-14 adjusted Nov. 2013):

Academy of College and Career Exploration High #427

School Year	Grade 6	Grade 7	Grade 8	Grade 9	Grade 10	Grade 11	Grade 12	Program Total
2014	50	54	55	185	128	107	90	669
2015	60	55	67	164	157	127	96	726
2016	59	57	58	173	136	150	110	743
2017	58	59	60	178	140	128	126	751
2018	57	60	67	180	153	139	114	769
2019	54	57	65	190	146	144	118	773
2020	53	53	62	190	154	138	122	771
2021	53	52	58	195	154	145	117	775
2022	52	52	57	202	158	145	123	790
2023	52	52	57	205	164	149	123	802
2024	45	46	51	201	166	155	127	791

Independence School Local I High #333

School Year	Grade 9	Grade 10	Grade 11	Grade 12	Program Total
2014	35	33	38	21	127
2015	36	30	28	36	130
2016	38	35	28	26	126
2017	38	33	32	25	128
2018	38	34	29	28	130
2019	40	34	30	26	130
2020	39	35	30	26	130
2021	40	34	30	26	130
2022	41	35	29	26	130
2023	41	35	29	25	130
2024	39	35	30	26	130

Combined

School Year	Grade 6	Grade 7	Grade 8	Grade 9	Grade 10	Grade 11	Grade 12	Program Total
2014	50	54	55	220	161	145	111	796
2015	60	55	67	200	188	155	132	856
2016	59	57	58	211	170	178	136	869
2017	58	59	60	216	174	160	152	879
2018	57	60	67	218	187	168	142	899
2019	54	57	65	230	180	174	144	903
2020	53	53	62	229	189	167	148	901
2021	53	52	58	235	188	175	143	905
2022	52	52	57	243	193	174	149	920
2023	52	52	57	245	199	179	148	932
2024	45	46	51	240	202	184	152	921

## C.5 Future Programs and Services:

### **Community Partners:**

#### Unassigned Community

The 3000 sf of community space is provided based on state funding. We are proposing a general use Community space to be built as part of the renovation and addition project to Robert Poole. At this time the exact function and use of this space is unknown, as direct Community partnerships are currently not established. However, ACCE has an active food pantry program that will require approximately 1000 sf, including the community family resource suite. The remaining 2000 sf will be designed as flexible, multipurpose spaces designated for community partners.



## **F. PROPOSED SITE REQUIREMENTS**

# F. PROPOSED SITE REQUIREMENTS

## F. Proposed Site Requirements

The site Robert Poole currently occupies is in an urban city block setting and as such some site requirements are likely to deviate from the approved educational specifications document that describes ideal site layouts. However, the site can accommodate the general design criteria to create increased outdoor green areas, educational areas and play areas that are safe, secure, easily supervised and welcoming.

### F.1 Parking - bus, car, delivery, service, staff visitor:

There are no specific site requirement deviations from those outlined in the approved Educational Specifications Part 1/Section J.

### F.2 Service access:

There are no specific site requirement deviations from those outlined in the approved Educational Specifications Part 1/Section J.

### F.3 Vehicle and pedestrian access:

There are no specific site requirement deviations from those outlined in the approved Educational Specifications Part 1/Section J.

### F.4 Playing fields/courts/yards:

The site is too small for baseball, football, or soccer fields. The only area of the site currently used for outdoor play area is at the front of the building on a plateau behind the modular separated by a retaining wall. The school has a baseball, basketball and volleyball program. The school currently has an informal relationship with the Roosevelt Recreation Center located across the street that allows use of the fields. The school and district will need to pursue a more formal MOU with Baltimore City Parks and Recreation that describes this relationship.

### F.5 Natural environmental areas:

There are no specific site requirement deviations from those outlined in the approved Educational Specifications Part 1/Section J.

### F.6 Utilities:

There are no specific site requirement deviations from those outlined in the approved Educational Specifications Part 1/Section J.

### F.7 Other:

There are no specific site requirement deviations from those outlined in the approved Educational Specifications Part 1/Section J.

# I. GENERAL SCHOOL DESIGN CRITERIA

# I. GENERAL SCHOOL DESIGN CRITERIA

## I. General School Design Criteria

### I.7 Special or unique program requirements:

Through discussions with the internal School Administration, Staff and local Community leaders, several special and unique program requirements have been identified for Robert Poole. These spaces generally are deviations from the Standard Educational Specifications requirements and are reflected as part of our Site Specific Educational Specifications. Below is a list of these program requirements along with a brief description and justification for each space.

#### LIST BY ITEM NUMBERS

##### Item #1: Administrative Spaces for Independence

The proposed additional 845 sf of administrative space will house Independence administrators and is comprised of 4 offices, a conference room, a faculty lounge and storage.

##### Item #2: Student Services Spaces for Independence

The proposed additional 375 sf of support services space will house Independence Psychologist and Social Worker and is comprised of 3 offices and storage.

##### Item #3: Classroom Spaces

The proposed additional 8,500 sf of classroom space is for additional classrooms for Independence.

##### Item #4: Science

The proposed additional 2,360 sf consists of an environmental science classroom for Independence and a Physics First classroom for ACCE and an additional greenhouse.

##### Item #5: Fine Arts

The additional 1,200 sf in Visual Arts is for an Art classroom for Independence. The music program can be accommodated in two music rooms and instrument storage. Theater performances will be held in the black box theater. The schools will hold assembly in the gymnasium instead of a theater/auditorium.

##### Item #6: Foreign Language

ACCE only has programmatic need for one foreign language classroom.

##### Item #7: Teaching Kitchen

The proposed additional 1,000 sf teaching kitchen to supplement core curriculum in biology, math, history, (etc) while imparting knowledge of safe food handling practices, cooking skills and an appreciation for flavor and nutrition.

##### Item #8: ROTC

The schools do not have an ROTC program.

##### Item #9: CTE Lab

The following CTE Labs have been approved by the Office of Teaching and Learning for ACCE:

- Project Lead the Way
- IT Networking and Cisco

Additionally a non-CTE special technology program, Gateway to Technology, has been approved by the Office of Teaching and Learning for ACCE.

Item #10: Wrestling:

The school does not have a wrestling program.

Item #11: Unassigned Community Spaces:

The 3,000 sf of community space is based on state funding.

# J. INDIVIDUAL SPACE DESCRIPTIONS

# J. INDIVIDUAL SPACE DESCRIPTIONS

This section of the document includes descriptions of the general guidelines and specific room requirements for each area of activity within the building that is different from the general Educational Specifications document.

Example:

## ADMINISTRATION

Distributed Admin | Storage

PROGRAM	Description	
	<i>Area Required (SF)</i>	45
	<i>Number of Users</i>	0
	<i>Adjacencies</i>	Distributed Administration (U 01.02)
<b>ARCHITECTURAL</b>	<i>Ceiling</i>	See standard specifications
	<i>Walls</i>	See standard specifications
	<i>Floor</i>	See standard specifications
	<i>Doors</i>	See standard specifications
	<i>Windows</i>	See standard specifications
	<i>Acoustics</i>	See standard specifications
<b>SYSTEMS</b>	<i>Lighting</i>	No special requirements
	<i>Audio/Visual</i>	No special requirements
	<i>Telecom/Data</i>	No special requirements
	<i>Electrical</i>	No special requirements
	<i>HVAC</i>	No special requirements
	<i>Plumbing</i>	No special requirements
	<i>Specialty</i>	No special requirements
<b>EQUIPMENT</b>	<i>Display</i>	
	<i>Casework/Millwork</i>	6 LF bookshelves
	<i>FF&amp;E (NIC)</i>	
<b>REMARKS</b>		

Key number → **U 01 02 03**

- “U” = Upper grades
- “L” = Lower grades
- “C” = Community space
- 01 = Department
- 02 = Program Area
- 03 = Space/Room

Baltimore City Public Schools

Educational Specifications

# U 05 SCIENCES

## DESIGN DEVIATIONS FROM PROTOTYPE

05.01 Science Labs

		Description	Ed. Spec. Part 2/Vol. III Ref.
05	01.05	PHYSICS FIRST	DIFFERS FROM STANDARD

05.02 Science Support

		Description	Ed. Spec. Part 2/Vol. III Ref.
05	02.04	GREENHOUSE	DIFFERS FROM STANDARD



## Science Labs | Physics First

<b>PROGRAM</b>	<i>Description</i>	Lab for physics and astronomy instruction, data collection, and exploration		
	<i>Area Required (SF)</i>	960		
	<i>Number of Users</i>	25-30 students, 1 teacher		
	<i>Adjacencies</i>	Science Labs (U 05.01); Prep (U 05.02.01); Storage (U 05.02.02)		
<b>ARCHITECTURAL</b>	<i>Ceiling</i>	10' to 12' if possible; with pipe grid or exposed structure for hanging projects		
	<i>Walls</i>	See standard specifications		
	<i>Floor</i>	See standard specifications		
	<i>Doors</i>	See standard specifications		
	<i>Windows</i>	See standard specifications		
	<i>Acoustics</i>	See standard specifications		
<b>SYSTEMS</b>	<i>Lighting</i>	Dual switching and electronic lighting controls		
	<i>Audio/Visual</i>	Options for multiple projection areas including front and rear of the room to allow for flexibility of table arrangement		
	<i>Telecom/Data</i>	Hardwired monitor/comp		
	<i>Electrical</i>	Quad outlets above base cabinets, 24" o.c. Provide power in the ceiling with retractable cords		
	<i>HVAC</i>	No special requirements		
	<i>Plumbing</i>	1 large clean-up sink, 4 student sinks; plaster traps at all sinks with goose-neck faucets; one ADA. Safety station w/ eye wash		
	<i>Specialty</i>	Gas at one station for demonstrations		
<b>EQUIPMENT</b>	<i>Display</i>	16	LF	Markerboard w/ tack strip
		12	LF	Markerboard w/ tack strip
	<i>Casework/Millwork</i>	3	LF	Teacher wardrobe
		8		Perimeter lab stations
	<i>FF&amp;E (NIC)</i>	1 Teacher desk/chair		
		1 Printer		
		30 Student chairs		
		15 Mobile work tables		
		30 Stools		
		6 LF Mobile book storage		
<b>REMARKS</b>		<ul style="list-style-type: none"> <li>• Room should be arranged for chairs at tables in lecture facing one screen or at lab stations with view to either screen.</li> <li>• 8 lab stations for 4 students each; with 4 sinks and data/power at each station; one ADA station.</li> <li>• If the program does not contain an Environmental Science Lab, the physics lab should have 4 additional sinks to accommodate the Environmental Science curriculum.</li> <li>• Provide emergency shut offs.</li> <li>• Consideration should be given to the storage of ongoing student projects and display of student work.</li> </ul>		

Science Labs | Greenhouse

<b>PROGRAM</b>	<i>Description</i>	Greenhouse to support environmental science program as well as garden and food related activities associated with teaching kitchen
	<i>Area Required (SF)</i>	400
	<i>Number of Users</i>	See standard specifications
	<i>Adjacencies</i>	Science Labs (U 05.01)
<b>ARCHITECTURAL</b>	<i>Ceiling</i>	See standard specifications
	<i>Walls</i>	See standard specifications
	<i>Floor</i>	See standard specifications
	<i>Doors</i>	See standard specifications
	<i>Windows</i>	See standard specifications
	<i>Acoustics</i>	See standard specifications
<b>SYSTEMS</b>	<i>Lighting</i>	No special requirements
	<i>Audio/Visual</i>	No special requirements
	<i>Telecom/Data</i>	Hardwired monitor/comp
	<i>Electrical</i>	No special requirements
	<i>HVAC</i>	No special requirements
	<i>Plumbing</i>	Hose bib near all windows, floor drain
	<i>Specialty</i>	No special requirements
<b>EQUIPMENT</b>	<i>Display</i>	N/A
	<i>Casework/Millwork</i>	N/A
	<i>FF&amp;E (NIC)</i>	N/A
<b>REMARKS</b>	N/A	

# U 07 SPECIALS

## DESIGN DEVIATIONS FROM PROTOTYPE

07.03 Teaching Kitchen

		Description	Ed. Spec. Part 2/Vol. III Ref.
07	03.01	TEACHING KITCHEN	DIFFERS FROM STANDARD

Teaching Kitchen | Teaching Kitchen

<b>PROGRAM</b>	<i>Description</i>	Use teaching kitchen to supplement core curriculum in biology, math, history, (etc) while imparting knowledge of safe food handling practices, cooking skills and an appreciation for flavor and nutrition.
	<i>Area Required (SF)</i>	1000
	<i>Number of Users</i>	1-2 full/part time staff, 25 students
	<i>Adjacencies</i>	Teaching kitchen should have access to outdoor garden area
<b>ARCHITECTURAL</b>	<i>Ceiling</i>	Washable lay-in tile
	<i>Walls</i>	Wear and mildew resistant, cleanable wall coating
	<i>Floor</i>	Quarry tile (slip resistant) with dark grout
	<i>Doors</i>	See standard specifications
	<i>Windows</i>	See standard specifications
	<i>Acoustics</i>	See standard specifications
<b>SYSTEMS</b>	<i>Lighting</i>	No special requirements
	<i>Audio/Visual</i>	No special requirements
	<i>Telecom/Data</i>	Phone line to office with amplified ringer
	<i>Electrical</i>	As required by code. See remarks
	<i>HVAC</i>	As required by code. See remarks
	<i>Plumbing</i>	As required by code. See remarks
<b>EQUIPMENT</b>	<i>Display</i>	N/A
	<i>Casework/Millwork</i>	N/A
	<i>FF&amp;E (NIC)</i>	N/A
<b>REMARKS</b>		<ul style="list-style-type: none"> <li>• The space should have a prep area, a cooking area and a dining area.</li> <li>• Prep area: 3 stations, each consisting of a 8' SS counter with a 16" x 16" x 10" utility sink, 2 under counter utensil drawers and an open shelf below</li> <li>• Cooking area: 3 stations, each consisting of a 8' SS counter with 2 induction burners dropped into counter, 2 under counter utensil drawers and an open shelf below.</li> <li>• Dining area: 3 8' tables and seating</li> </ul>

# U 08 TECHNOLOGY EDUCATION

## DESIGN DEVIATIONS FROM PROTOTYPE

- 08.03 CTE 1 - IT Networking Academy / CISCO Lab
- 08.04 CTE 2 - Gateway to Technology
- 08.05 CTE 3 - Project Lead the Way

Description			Ed. Spec. Part 2/Vol. III Ref.
08	03.01	LAB	DIFFERS FROM STANDARD
08	04.01	CLASSROOM AND LAB	DIFFERS FROM STANDARD
08	05.01	CLASSROOM AND LAB	DIFFERS FROM STANDARD

	CTE Program 1   Networking Academy / CISCO Academy	
<b>PROGRAM</b>	<i>Description</i>	The IT Networking Academy (Cisco Academy) is a nationally recognized program that prepares students for successful careers in information technology fields such as computer network design and administration, hardware, software and network installation, local and wide-area network (LAN/WAN) management and systems engineering.
	<i>Area Required (SF)</i>	1400
	<i>Number of Users</i>	20
	<i>Adjacencies</i>	See standard specifications
<b>ARCHITECTURAL</b>	<i>Ceiling</i>	See standard specifications
	<i>Walls</i>	See standard specifications
	<i>Floor</i>	See standard specifications
	<i>Doors</i>	See standard specifications
	<i>Windows</i>	See standard specifications
	<i>Acoustics</i>	See standard specifications
<b>SYSTEMS</b>	<i>Lighting</i>	Per Cisco requirements
	<i>Audio/Visual</i>	Per Cisco requirements
	<i>Telecom/Data</i>	Per Cisco requirements
	<i>Electrical</i>	Per Cisco requirements
	<i>HVAC</i>	Per Cisco requirements
	<i>Plumbing</i>	Per Cisco requirements
	<i>Specialty</i>	Per Cisco requirements
<b>EQUIPMENT</b>	<i>Display</i>	Short throw projector and non-glare whiteboard
	<i>Casework/Millwork</i>	See standard specifications
	<i>FF&amp;E (NIC)</i>	See standard specifications
<b>REMARKS</b>	N/A	

## CTE Program 2 | Gateway to Technology

<b>PROGRAM</b>	<i>Description</i>	Primary learning space designed to be used by 6-8 grade students for nationally recognized Gateway to Technology program.
	<i>Area Required (SF)</i>	1400
	<i>Number of Users</i> <i>Adjacencies</i>	25-30 students, 1 teacher Project Lead the Way (U 08.05.01), Material Storage (U 08.04.02)
<b>ARCHITECTURAL</b>	<i>Ceiling</i>	See standard specifications
	<i>Walls</i>	See standard specifications
	<i>Floor</i>	See standard specifications
	<i>Doors</i>	See standard specifications
	<i>Windows</i>	See standard specifications
	<i>Acoustics</i>	See standard specifications
<b>SYSTEMS</b>	<i>Lighting</i>	No special requirements
	<i>Audio/Visual</i>	No special requirements
	<i>Telecom/Data</i>	No special requirements
	<i>Electrical</i>	No special requirements
	<i>HVAC</i>	No special requirements
	<i>Plumbing</i> <i>Specialty</i>	No special requirements No special requirements
<b>EQUIPMENT</b>	<i>Display</i>	16 LF Marker board w/task strip 8 LF Marker board w/task strip 8 LF Tack board
	<i>Casework/Millwork</i> <i>FF&amp;E (NIC)</i>	3 LF Teacher Wardrobe 1 Teachers desk/chair 30 student chairs 31 computer stations
<b>REMARKS</b>	N/A	

## CTE Program 3 | Project Lead the Way

<b>PROGRAM</b>	<i>Description</i>	Primary learning space designed to be used by 9-12 grade students for nationally recognized Project Lead the Way program.
	<i>Area Required (SF)</i>	1850
	<i>Number of Users</i>	20 students, 1 teacher
	<i>Adjacencies</i>	Gateway to Technology (U 08.04.01), Materials Storage (U 08.04.02)
<b>ARCHITECTURAL</b>	<i>Ceiling</i>	See standard specifications
	<i>Walls</i>	See standard specifications
	<i>Floor</i>	See standard specifications
	<i>Doors</i>	See standard specifications
	<i>Windows</i>	See standard specifications
	<i>Acoustics</i>	See standard specifications
<b>SYSTEMS</b>	<i>Lighting</i>	No special requirements
	<i>Audio/Visual</i>	No special requirements
	<i>Telecom/Data</i>	No special requirements
	<i>Electrical</i>	No special requirements
	<i>HVAC</i>	No special requirements
	<i>Plumbing</i>	No special requirements
	<i>Specialty</i>	No special requirements
<b>EQUIPMENT</b>	<i>Display</i>	16 LF Marker board w/task strip 8 LF Marker board w/task strip 8 LF Tack board
	<i>Casework/Millwork</i>	3 LF Teacher Wardrobe
	<i>FF&amp;E (NIC)</i>	1 Teachers desk/chair 20 student chairs 21 computer stations
<b>REMARKS</b>	N/A	



# L. SUMMARY OF SPATIAL REQUIREMENTS

# L. SUMMARY OF SPATIAL REQUIREMENTS

## Robert Poole Building

		EDUCATIONAL SPECIFICATION STANDARDS						SITE SPECIFIC EDUCATIONAL SPECIFICATIONS									
ROOM/SPACE	TEACHING STATIONS	NUMBER EACH	SF EACH	TOTAL	SF TALLY	TS FTE	CTE FTE	SE FTE	TEACHING STATIONS	NUMBER EACH	SF EACH	TOTAL	SF TALLY	TS FTE	CTE FTE	SE FTE	DIFFERENCE
<b>01 ADMINISTRATION</b>																	
<b>01.01 Main Office</b>																	
01 01.01	GENERAL-RECEPTION	1	550	550	1,870				1	550	550	2,320					0
01 01.02	CONFERENCE	1	250	250					1	250	250						0
01 01.03	WORKROOM	1	200	200					1	200	200						0
01 01.04	STORAGE	1	125	125					1	125	125						0
01 01.05	SECURE STORAGE	1	75	75					1	75	75						0
01 01.06	PRINCIPAL	1	150	150					2	150	300						150
01 01.07	ADMINISTRATIVE ASSISTANT	1	100	100					2	100	200						100
01 01.08	FLEX OFFICE	2	100	200					4	100	400						200
01 01.09	COAT CLOSET	1	20	20					1	20	20						0
01 01.10	ATTENDANCE OFFICE	1	100	100					1	100	100						0
01 01.11	COAT CLOSET	1	100	100					1	100	100						0
<b>01.02 Distributed Administration</b>																	
01 02.01	VICE PRINCIPAL/ADMINISTRATOR	2	150	300	495				2	150	300	690					0
01 02.02	CONFERENCE	1	150	150					2	150	300						150
01 02.03	STORAGE	1	45	45					2	45	90						45
<b>01.03 Faculty Support</b>																	
01 03.01	FACULTY LOUNGE	1	400	400	400				2	300	600	600					200
<b>02 STUDENT SERVICES</b>																	
<b>02.01 Guidance</b>																	
02 01.01	OFFICE	3	100	300	1,275				3	100	300	1,275					0
02 01.02	WAITING/RECEPTION	1	200	200					1	200	200						0
02 01.03	CONFERENCE	1	350	350					1	350	350						0
02 01.04	CAREER CENTER	1	250	250					1	250	250						0
02 01.05	STORAGE	1	100	100					1	100	100						0
02 01.06	TESTING	1	75	75					1	75	75						0
<b>02.02 Health Suite</b>																	
02 02.01	WAITING AREA	1	150	150	950				1	150	150	950					0
02 02.02	EXAM ROOM/TREATMENT	2	100	200					2	100	200						0
02 02.03	STUDENT REST AREAS	2	150	300					2	150	300						0
02 02.04	OFFICE	1	100	100					1	100	100						0
02 02.05	STORAGE	1	50	50					1	50	50						0
02 02.06	STUDENT TOILET - LARGE	1	100	100					1	100	100						0
02 02.07	STUDENT TOILET	1	50	50					1	50	50						0

Robert Poole Building

EDUCATIONAL SPECIFICATION STANDARDS										SITE SPECIFIC EDUCATIONAL SPECIFICATIONS									
ROOM/SPACE	TEACHING STATIONS	NUMBER EACH	SF EACH	TOTAL	SF TALLY	TS FTE	CTE FTE	SE FTE		TEACHING STATIONS	NUMBER EACH	SF EACH	TOTAL	SF TALLY	TS FTE	CTE FTE	SE FTE	DIFFERENCE	
<b>02.03 Support Services</b>																			
02 03.01 PSYCHOLOGIST	1	100	100		475					2	100	200		850				100	
02 03.02 SOCIAL WORKER	1	100	100							2	100	200						100	
02 03.03 FLEX OFFICE	2	100	200							3	100	300						100	
02 03.04 RECORDS STORAGE	1	75	75							2	75	150						75	
02 03.05 FLEX CONFERENCE	0	200	0							0	0	0						0	
<b>02.04 Student Services</b>																			
02 04.01 SGA OFFICE	1	150	150		325					1	150	150		325				0	
02 04.02 SCHOOL STORE	1	175	175							1	175	175						0	
<b>03 TEACHING AND LEARNING</b>																			
<b>03.01 Classrooms</b>																			
03 01.01 GENERAL	1	850	850		16,450	25				6	830	4980		20,190	150			4,130	
03 01.02 ENGLISH	4	850	3400			100				4	830	3320			100			-80	
03 01.03 MATH	4	850	3400			100				4	830	3320			100			-80	
03 01.04 SOCIAL STUDIES	4	850	3400			100				4	830	3320			100			-80	
03 01.05 GRADES 6-7-8	6	900	5400			150				6	875	5250			150			-150	
										<b>24</b>		<b>600</b>			<b>600</b>				
<b>03.02 Shared Spaces</b>																			
03 02.01 COLLABORATIVE LEARNING AREA	4	600	2400		5,000					4	600	2400		5,000				0	
03 02.02 RESOURCE	4	250	1000							4	250	1000						0	
03 02.03 TEACHER PLANNING	4	200	800							4	200	800						0	
03 02.04 STORAGE	4	200	800							4	200	800						0	
<b>04 SPECIAL EDUCATION</b>																			
<b>04.01 General</b>																			
04 01.01 CLASSROOM	2	850	1700		1,920					2	850	1700		1,920				0	
04 01.02 OFFICE	1	120	120					20		1	120	120						0	
04 01.03 RECORDS STORAGE	1	100	100							1	100	100						0	
										<b>2</b>		<b>20</b>						<b>20</b>	
<b>05 SCIENCES</b>																			
<b>05.01 Science Labs</b>																			
05 01.01 BIOLOGY	2	1400	2800		7,000	50				2	1400	2800		9,360	50			0	
05 01.02 CHEMISTRY	1	1400	1400			25				1	1400	1400			25			0	
05 01.03 PHYSICS	1	1400	1400			25				1	1400	1400			25			0	
05 01.04 ENVIRONMENTAL SCIENCE	1	1400	1400			25				2	1400	2800			50			1,400	
05 01.05 PHYSICS FIRST	0	0	0			0				1	960	960			25			960	
										<b>7</b>		<b>175</b>			<b>175</b>				

Robert Poole Building

EDUCATIONAL SPECIFICATION STANDARDS		SITE SPECIFIC EDUCATIONAL SPECIFICATIONS															
ROOM/SPACE	TEACHING STATIONS	NUMBER EACH	SF EACH	TOTAL	SF TALLY	TS FTE	CTE FTE	SE FTE	TEACHING STATIONS	NUMBER EACH	SF EACH	TOTAL	SF TALLY	TS FTE	CTE FTE	SE FTE	DIFFERENCE
<b>05.02 Science Support</b>																	
05 02.01	PREP	3	200	600	1,150					3	200	600	1,750				0
05 02.02	STORAGE	3	100	300						3	100	300					0
05 02.03	CHEMICAL STORAGE	1	50	50						1	50	50					0
05 02.04	GREENHOUSE	1	200	200						2	400	800					800
<b>06 FINE ARTS</b>																	
<b>06.01 Visual Art</b>																	
06 01.01	ART STUDIO	1	1200	1200	2,650	25			2	2	1200	2400	3,850	50			1,200
06 01.02	ART STUDIO - 3D	1	1200	1200		25			1	1	1200	1200		25			0
06 01.03	GRAPHICS MEDIA STUDIO	0	1000	0		0				0	0	0		0			0
06 01.04	STORAGE	1	150	150					1	1	150	150					0
06 01.05	KILNCERAMIC STORAGE	1	100	100					3	1	100	100		75			0
<b>06.02 Music</b>																	
06 02.01	INSTRUMENTAL MUSIC	1	1500	1500	3,015	25			1	1	1500	1500	2,600	25			0
06 02.02	VOCAL MUSIC	1	800	800		25			1	1	800	800		25			0
06 02.03	PRACTICE ROOM	2	60	120						0	60	0					-120
06 02.04	INSTRUMENT STORAGE	1	300	300					1	1	300	300					0
06 02.05	UNIFORM STORAGE	1	100	100						0	100	0					-100
06 02.06	OFFICE	1	120	120						0	120	0					-120
06 02.07	LIBRARY/MUSIC STORAGE	1	75	75					2	0	75	0		50			-75
<b>06.03 Drama</b>																	
06 03.01	CLASSROOM	0	900	0	1,600	0				0	0	0	1,600	0			0
06 03.02	BLACK BOX THEATER	1	1500	1500		25			1	1	1500	1500		25			0
06 03.03	CONTROL ROOM	1	100	100					1	1	100	100					0
<b>06.04 Auditorium</b>																	
06 04.01	THEATER/AUDITORIUM	1	4500	4500	8,200					0	4500	0		0			-4,500
06 04.02	STAGE W/ MODIFIED ORCHESTRAPIT	1	2000	2000						0	1000	0					-2,000
06 04.03	TICKET BOOTH/OFFICE	1	100	100						0	100	0					-100
06 04.04	CONTROL	1	200	200						0	200	0					-200
06 04.05	COSTUME/PROP STORAGE	1	300	300						0	300	0					-300
06 04.06	DRESSING ROOMS	2	150	300						0	150	0					-300
06 04.07	STUDENT TOILET	2	50	100						0	50	0					-100
06 04.08	SET CONSTRUCTION	1	700	700						0	0	0		50			-700

Robert Poole Building

EDUCATIONAL SPECIFICATION STANDARDS										SITE SPECIFIC EDUCATIONAL SPECIFICATIONS										
ROOM/SPACE	TEACHING STATIONS	NUMBER EACH	SF EACH	TOTAL	SF TALLY	TS FTE	CTE FTE	SE FTE		TEACHING STATIONS	NUMBER EACH	SF EACH	TOTAL	SF TALLY	TS FTE	CTE FTE	SE FTE		DIFFERENCE	
<b>07 SPECIALS</b>																				
<b>7.01 Foreign Language</b>																				
07 01.01 FOREIGN LANGUAGE	3	3	900	2700	2,800	75				1	1	900	900	900	25					-1,800
07 01.02 STORAGE		1	100	100						1	0	0	0		25					-100
<b>7.02 Business Education</b>																				
07 02.01 COMPUTER TECHNOLOGY LAB	2	2	1000	2000	2,750	50				2	2	1000	2000	2,750	50					0
07 02.02 STUDENT STORAGE		1	100	100						1	1	100	100							0
07 02.03 COMPUTER SERVICE LAB		1	550	550						1	1	550	550							0
07 02.04 STORAGE		1	100	100						2	1	100	100		50					0
<b>7.03 Teaching Kitchen</b>																				
07 03.01 TEACHING KITCHEN		0	0	0	0					1	1	1000	1000	1,000						1,000
<b>08 TECHNOLOGY EDUCATION</b>																				
<b>08.01 Foundations of Technology</b>																				
08 01.01 FOT LAB	1	1	1000	1000	1,200	25				1	1	1000	1000	1,200	25					0
08 01.02 PROJECT/MATERIAL STORAGE		1	200	200						1	1	200	200		25					0
<b>08.02 ROTC</b>																				
08 02.01 CLASSROOM	2	2	850	1700	2,950	50				0	0	0	0	0	0					-1,700
08 02.02 TOILET/CHANGING ROOM		2	175	350						0	0	0	0							-350
08 02.03 UNIFORM STORAGE		1	240	240						0	0	0	0							-240
08 02.04 SUPPLIES		1	200	200						0	0	0	0							-200
08 02.05 ARMORY		1	100	100						0	0	0	0							-100
08 02.06 OFFICE		1	200	200						0	0	0	0							-200
08 02.07 BOOK STORAGE		1	20	20						0	0	0	0							-20
08 02.08 CADET OPERATIONS		1	140	140						0	0	0	0		0					-140
<b>08.03 CTE Program 1 - CISCO LAB</b>																				
08 03.01 ENGINEERING LAB	1	1	1400	1400	1,500					1	1	1400	1400	1,500		20				0
08 03.02 PROJECT/MATERIAL STORAGE		1	100	100						1	1	100	100			20				0
<b>08.04 CTE Program 2 - GATEWAY TO TECHNOLOGY</b>																				
08 04.01 CLASSROOM & PRODUCTION LAB	1	1	1850	1850	2,050					1	1	1400	1400	1,600		25				-450
08 04.02 STORAGE		1	200	200						1	1	200	200		25					0

Robert Poole Building

EDUCATIONAL SPECIFICATION STANDARDS		SITE SPECIFIC EDUCATIONAL SPECIFICATIONS													
ROOM/SPACE	TEACHING STATIONS	NUMBER EACH	TOTAL	SF TALLY	TS FTE	CTE FTE	SE FTE	TEACHING STATIONS	NUMBER EACH	TOTAL	SF TALLY	TS FTE	CTE FTE	SE FTE	DIFFERENCE
<b>08.05 CTE Program 3 - PROJECT LEAD THE WAY</b>															
08 05.01 CLASSROOM & PRODUCTION LAB	0	0	0	0	0	0	0	1	1	1850	1,850	0	20	0	1,850
<b>09 PHYSICAL EDUCATION</b>															
<b>09.01 Physical Education</b>															
09 01.01 GYMNASIUM	2	1	10000	20,000	50			2	1	8500	14,100	50			-1,500
09 01.02 AUXILIARY GYM	1	1	6000					1	1	5600	5600				-400
09 01.03 WRESTLING	1	1	2500					0	0	0	0	0			-2,500
09 01.04 FITNESS/WEIGHT TRAINING	0	0	1500		0			0	0	1500	0	0			0
09 01.05 DANCE/ACTIVITY ROOM	1	1	1500		25			0	0	1500	0	0			-1,500
09 01.06 HEALTH CLASSROOM	0	0	850		0			2	0	850	0	0			0
<b>09.02 Support</b>															
09 02.01 LOCKER ROOMS	2	2	1400	4,500				2	2	700	4,500				0
09 02.02 SHOWERS/TOILETS	2	2	400					2	2	200	400				0
09 02.03 TEAM ROOMS	2	2	600					2	2	300	600				0
09 02.04 PE TEACHER/COACH OFFICE	2	2	400					2	2	200	400				0
09 02.05 COACH LOCKERS/TOILET	2	2	180					2	2	90	180				0
09 02.06 ATHLETIC DIRECTOR OFFICE	1	1	120					1	1	120	120				0
09 02.07 TRAINING/WHIRLPOOL	1	1	120					1	1	120	120				0
09 02.08 LAUNDRY/TOWELS	1	1	100					1	1	100	100				0
09 02.09 CONGESSION/TICKETS	1	1	100					1	1	100	100				0
09 02.10 OUTDOOR STORAGE	1	1	200					1	1	200	200				0
09 02.11 INDOOR STORAGE	1	1	350					1	1	350	350				0
09 02.12 ATHLETIC STORAGE	1	1	250					1	1	250	250				0
09 02.13 ADAPTIVE PE STORAGE	1	1	100					1	1	100	100				0
09 02.14 OFFICIALS LOCKERS	2	2	180					2	2	90	180				0
<b>10 MEDIA</b>															
<b>10.01 Media Center</b>															
10 01.01 READING ROOM	1	1	4000	4,975				1	1	3539	4,514				-461
10 01.02 OFFICE/WORKROOM	1	1	225					1	1	225	225				0
10 01.03 AV AND MAGAZINE STORAGE	1	1	100					1	1	100	100				0
10 01.04 HEAD END ROOM	1	1	150					1	1	150	150				0
10 01.05 HISTORIC COLLECTIONS	1	1	100					1	1	100	100				0
10 01.06 GENERAL STORAGE	1	1	100					1	1	100	100				0
10 01.07 PROJECT ROOM	3	3	300					3	3	100	300				0

Robert Poole Building

EDUCATIONAL SPECIFICATION STANDARDS		SITE SPECIFIC EDUCATIONAL SPECIFICATIONS						
ROOM/SPACE	TEACHING STATIONS	NUMBER EACH	SF EACH	TOTAL	SF TALLY	TS FTE	CTE FTE	SE FTE
<b>10.02 Communications/TV</b>								
10 02.01 TV/VIDEO STUDIO	1	800	800	2,450	950			
10 02.02 CONTROL/EDITING	1	150	150		700			
10 02.03 PUBLICATIONS LAB	1	450	450		150			
10 02.04 STORAGE	1	100	100		0			
10 02.05 GRAPHICS LAB	1	950	950		100	25		
<b>11 FOOD SERVICES</b>								
<b>11.01 Dining</b>								
11 01.01 DINING	1	4000	4000	4,200	4000			
11 01.02 FURNITURE STORAGE	1	200	200		200			
<b>11.02 Food Service</b>								
11 02.01 KITCHEN	1	800	800	2,990	800			
11 02.02 SERVING LINE	3	250	750		750			
11 02.03 OFFICE	1	100	100		100			
11 02.04 WALK-IN FREEZER	1	200	200		200			
11 02.05 WALK-IN CHILLER	1	200	200		200			
11 02.06 DRY STORAGE	1	250	250		250			
11 02.07 DISH ROOM/ TRAY RETURN	1	350	350		350			
11 02.08 SOAP STORAGE	1	50	50		50			
11 02.09 CAN WASH	1	50	50		50			
11 02.10 LOCKER/ TOILET	1	120	120		120			
11 02.11 RECEIVING	1	120	120		120			
<b>12 BUILDING SERVICES</b>								
<b>12.01 Maintenance/Operations</b>								
12 01.01 RECEIVING	1	200	200	1,440	200			
12 01.02 CENTRAL STORAGE	1	200	200		200			
12 01.03 OPERATIONS OFFICE	1	140	140		140			
12 01.04 LOCKERS/SHOWERS/TOILETS	1	120	120		120			
12 01.05 SECURITY OFFICE	1	120	120		120			
12 01.06 CUSTODIAL CLOSETS	6	60	360		360			
12 01.07 RECYCLING	1	200	200		200			
12 01.08 OUTDOOR STORAGE	1	100	100		100			
<b>12.02 Toilet</b>								
12 02.01 STAFF TOILET	8	50	400	400	400			
								DIFFERENCE
								-100
								0
								-450
								0
								-950

Robert Poole Building

EDUCATIONAL SPECIFICATION STANDARDS		SITE SPECIFIC EDUCATIONAL SPECIFICATIONS															
ROOM/SPACE	TEACHING STATIONS	NUMBER EACH	SF EACH	TOTAL	SF TALLY	TS FTE	CTE FTE	SE FTE	TEACHING STATIONS	NUMBER EACH	SF EACH	TOTAL	SF TALLY	TS FTE	CTE FTE	SE FTE	DIFFERENCE
<b>13 COMMUNITY SPACE</b>																	
<b>13.01 Family Resource Suite</b>																	
13 01.01	FAMILY RESOURCE ROOM	1	150	150	280				0	0	150	0	0				-150
13 01.02	OFFICE	1	80	80						0	80	0	0				-80
13 01.03	TOILET	1	50	50						0	50	0	0				-50
<b>13.02 Out of School Time Support</b>																	
13 02.01	STORAGE	1	100	100	230				0	0	0	0	0				-100
13 02.02	PANTRY	1	50	50						0	0	0	0				-50
13 02.03	OFFICE	1	80	80						0	0	0	0				-80
<b>13.03 Service</b>																	
13 03.01	PANTRY	1	80	80	280				280	1	80	80					0
13 03.02	PERSONAL CARE	1	100	100						1	100	100					0
13 03.03	LAUNDRY	1	100	100						1	100	100					0
<b>13.04 Community Space</b>																	
13 04.01	COMMUNITY SPACE	0	0	0	0				0	1	2720	2720	2,720				2,720
<b>Total Capacity</b>																	
<b>910</b>																	
<b>Total Teaching Stations</b>																	
<b>45</b>																	
<b>Total Net Square Footage</b>																	
<b>107,770</b>																	
<b>TOTAL GROSS AREA</b>																	
<b>1.4 X 150,878</b>																	
<b>Total Teaching Stations</b>																	
<b>48</b>																	
<b>Total Net Square Footage</b>																	
<b>100,174</b>																	
<b>TOTAL GROSS AREA</b>																	
<b>140,244</b>																	
<b>Total Teaching Stations</b>																	
<b>37</b>																	
<b>Total Net Square Footage</b>																	
<b>786</b>																	
<b>TOTAL SCHOOL CAPACITY</b>																	
<b>989</b>																	
<b>High School Capacity</b>																	
<b>34</b>																	
<b>85% (per State Requirements)</b>																	
<b>723</b>																	
<b>CTE</b>																	
<b>2</b>																	
<b>Middle School Capacity</b>																	
<b>6</b>																	
<b>85% (per State Requirements)</b>																	
<b>128</b>																	
<b>Special Education</b>																	
<b>2</b>																	
<b>TOTAL SCHOOL CAPACITY</b>																	
<b>910</b>																	
<b>Special Education</b>																	
<b>20</b>																	
<b>TOTAL SCHOOL CAPACITY</b>																	
<b>989</b>																	
<b>Special Education</b>																	
<b>20</b>																	
<b>TOTAL SCHOOL CAPACITY</b>																	
<b>989</b>																	
<b>Special Education</b>																	
<b>20</b>																	
<b>TOTAL SCHOOL CAPACITY</b>																	
<b>989</b>																	
<b>Special Education</b>																	
<b>20</b>																	
<b>TOTAL SCHOOL CAPACITY</b>																	
<b>989</b>																	