



21st Century School Buildings Plan

SCHOOL Patterson High School & Claremont Middle/High School
COMMUNITY MEETING Design Development Review | March 29, 2017



Introductions

Communication Coordinator

Design Director

Design Team

Agenda

- **21st century School Buildings Program**
- **School Size & Program Requirements**
- **Existing Conditions**
- **Site Circulation**
- **Project Goals**
- **Design Studies**
- **Site design**
- **Floor Plans**
- **Exterior Views**
- **Major Building Spaces**

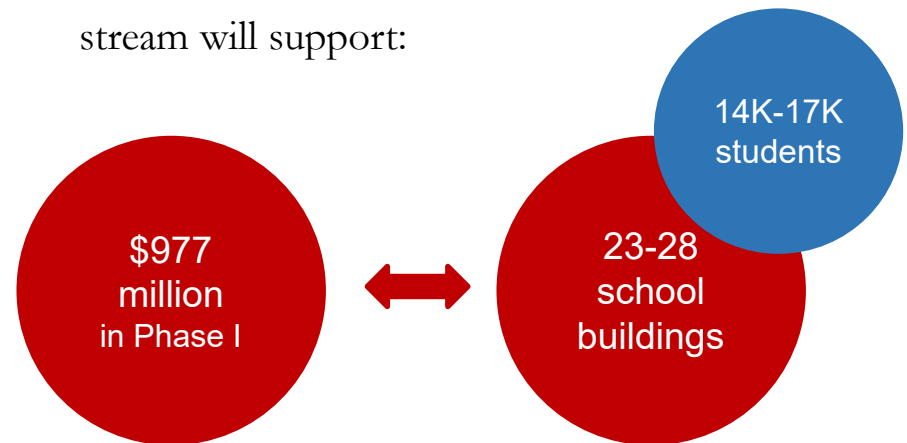
21st Century School Buildings Program Update

The Baltimore City Public School System (City Schools) Construction and Revitalization Act of 2013 resulted in a partnership between:

- The State of Maryland
- Baltimore City
- City Schools

Each contribute \$20 million annually towards the plan.

Current estimates suggest the funding stream will support:



City Schools' Plan is one of the largest public works project in Baltimore City to date.

Claremont Classrooms and Spaces

10 Classrooms	Support Services Suite
1 Lifeskills Lab	1 Music Room
1 Art Room	1 Auxiliary Gym
1 School Store	1 Dining Room
1 Horticulture Lab	

Patterson Classrooms and Spaces

AOP push-in program	12 CTE spaces (Child Care, Cosmetics, Business Ed, Emergency Preparedness, Health)
29 classrooms (Math, Social Studies, English, general)	1 wrestling/dance room; 1 weight room
2 Lifeskills Classrooms + 1 Lab (citywide program)	1 full gym; 1 auxiliary gym for after hours use
9 science labs (Bio, Chem, Physics, Environmental)	1 Media Center
2 Art rooms; 2 Music rooms; 1 Black Box	1 Cafeteria; 1 Auditorium
1 tech lab; ROTC spaces; 1 Project Lead the Way	Community Health Center

Project Goals

Strong Sense of Place	Safe Environment
Modern Facility	Ease of Circulation Inside and Outside
Inspiring Facility	Sensitive Design
2 Separate Schools in 1 Building	Emphasize Equality of Both Schools
New Community Space	21 st Century Learning Environment

Schematic Design Review



- Built in 1962 as an elementary school
- Converted in 1977 to Claremont School for Special Education
- Students have moderate to severe disabilities

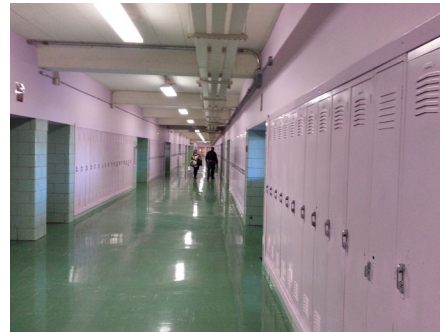


CLAREMONT EXISTING CONDITIONS

Schematic Design Review



- Built in 1957 with numerous additions
 - 9th Grade Academic Wing (1966 addition)
 - Administrative Wing (1977 addition)
- Masonry Building with single-glazed windows
- Athletic stadium
- Baseball and Softball fields
- Tennis courts



PATTERSON EXISTING CONDITIONS

Project Development



H-Scheme



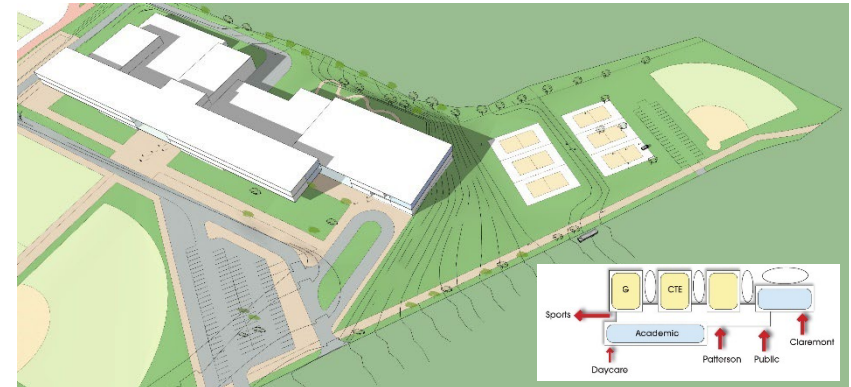
Bar Scheme



Hinge Scheme

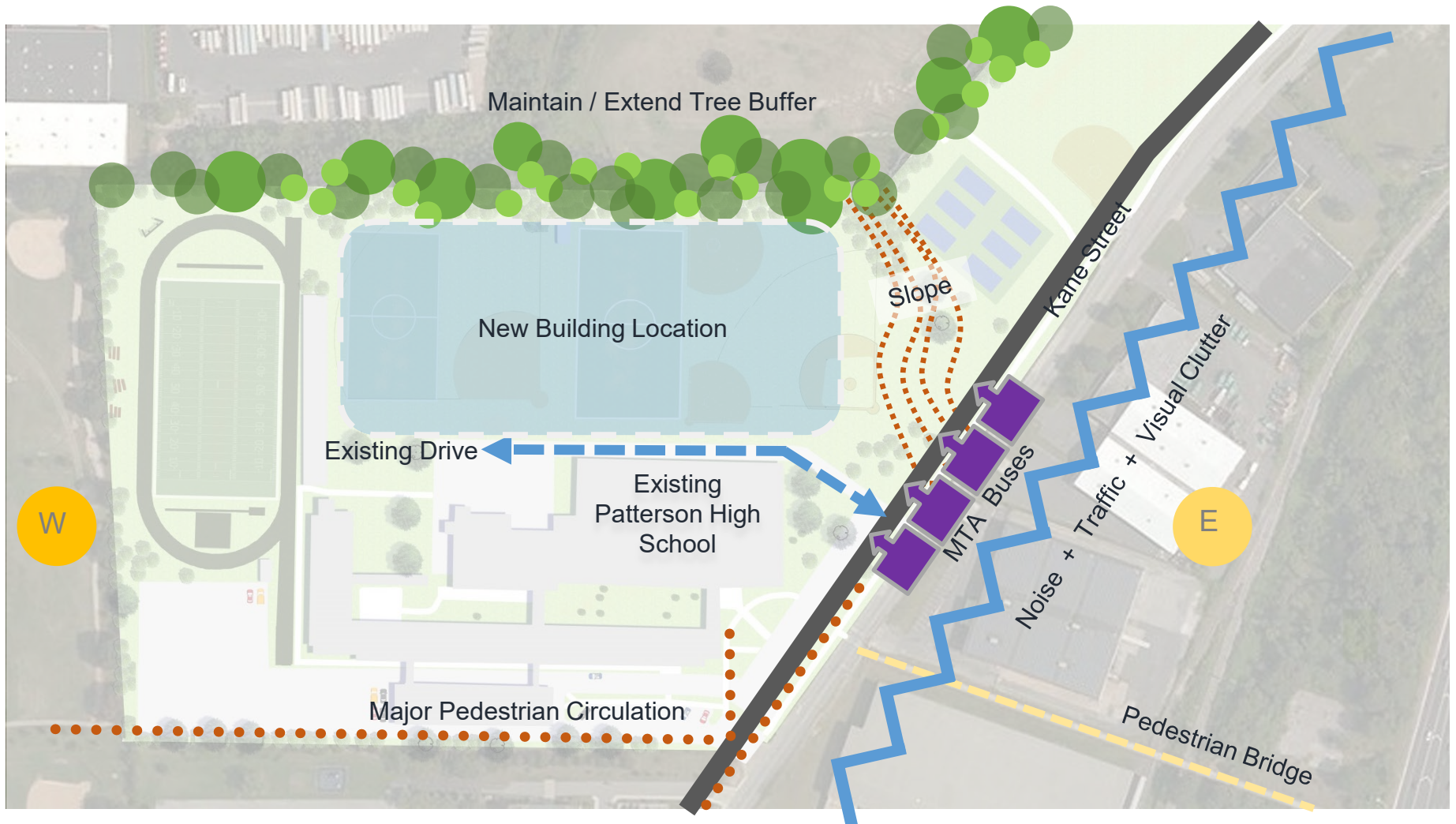


On the Hill

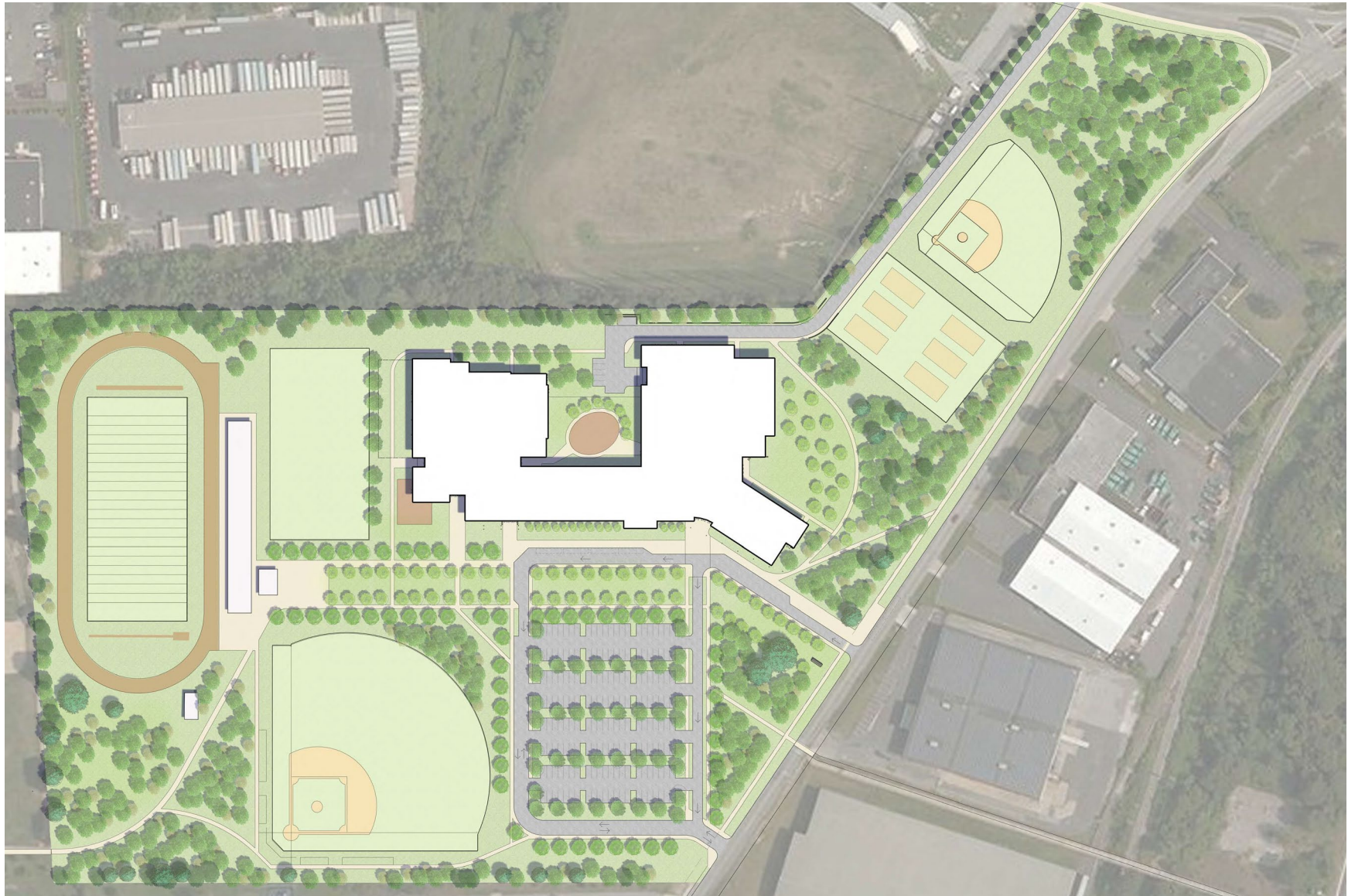


On the Fields

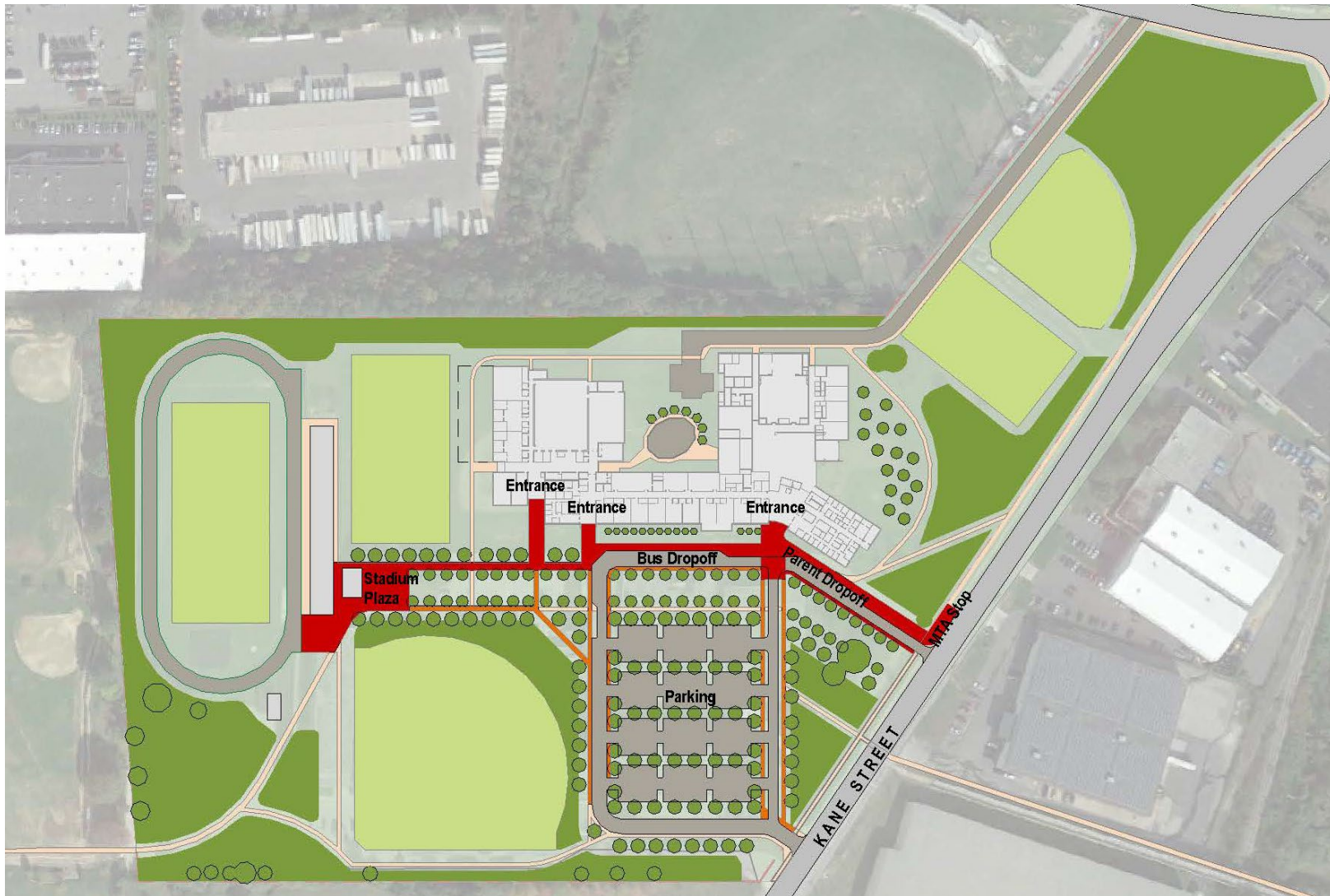
Project Development



PROPOSED SITE PLAN

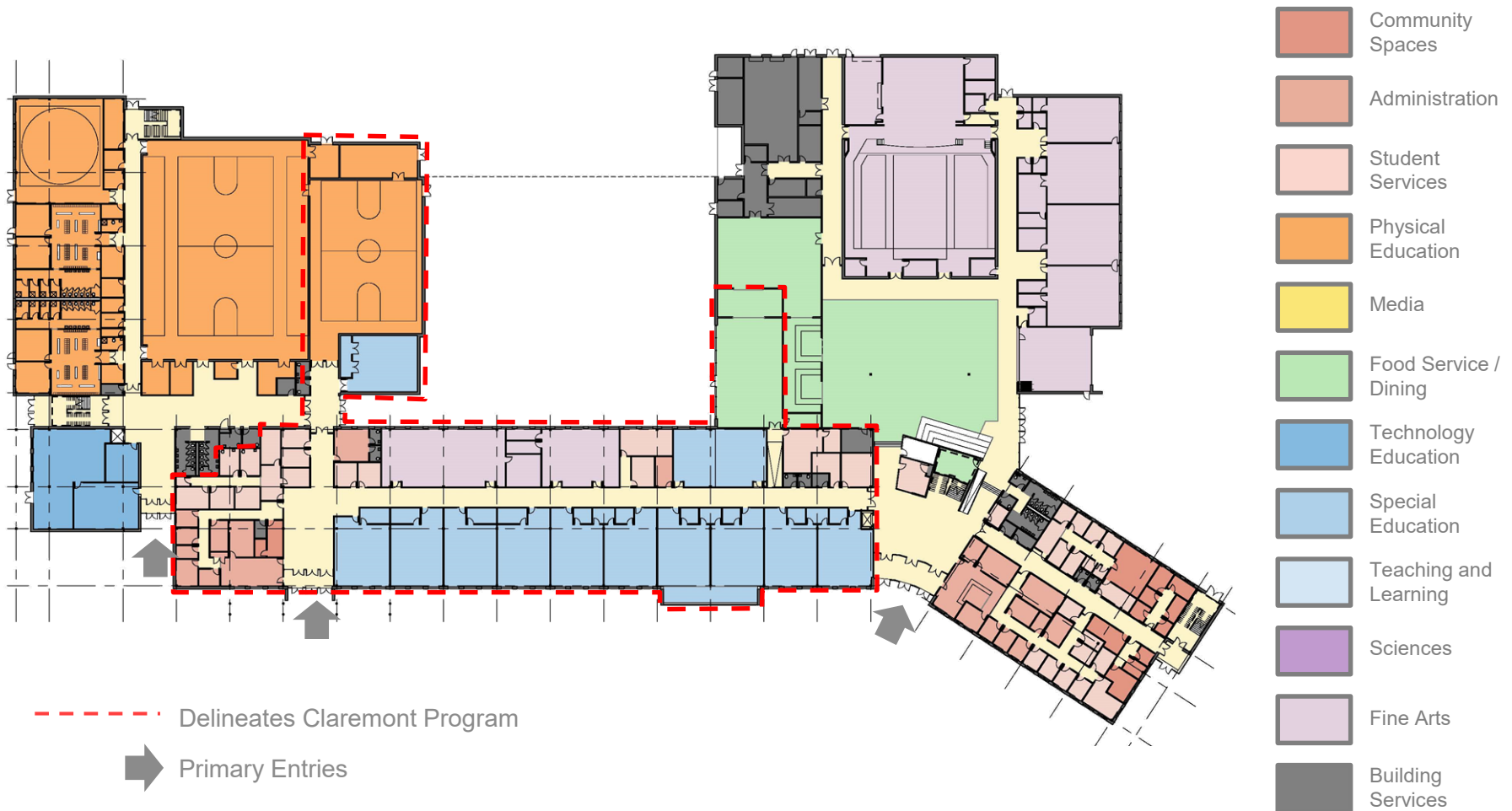


Schematic Design Review



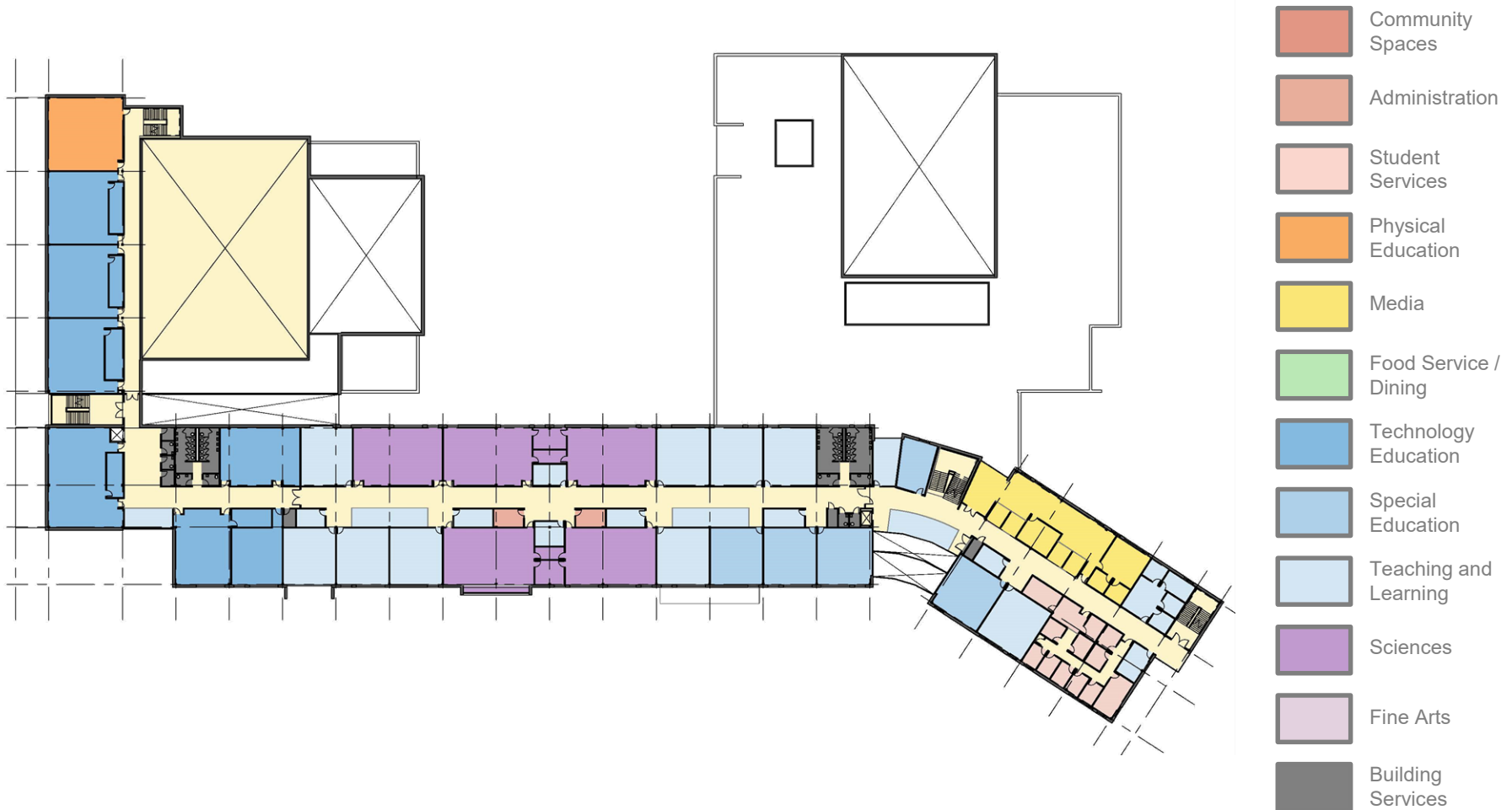
PROPOSED PEDESTRIAN CIRCULATION

Schematic Design Review



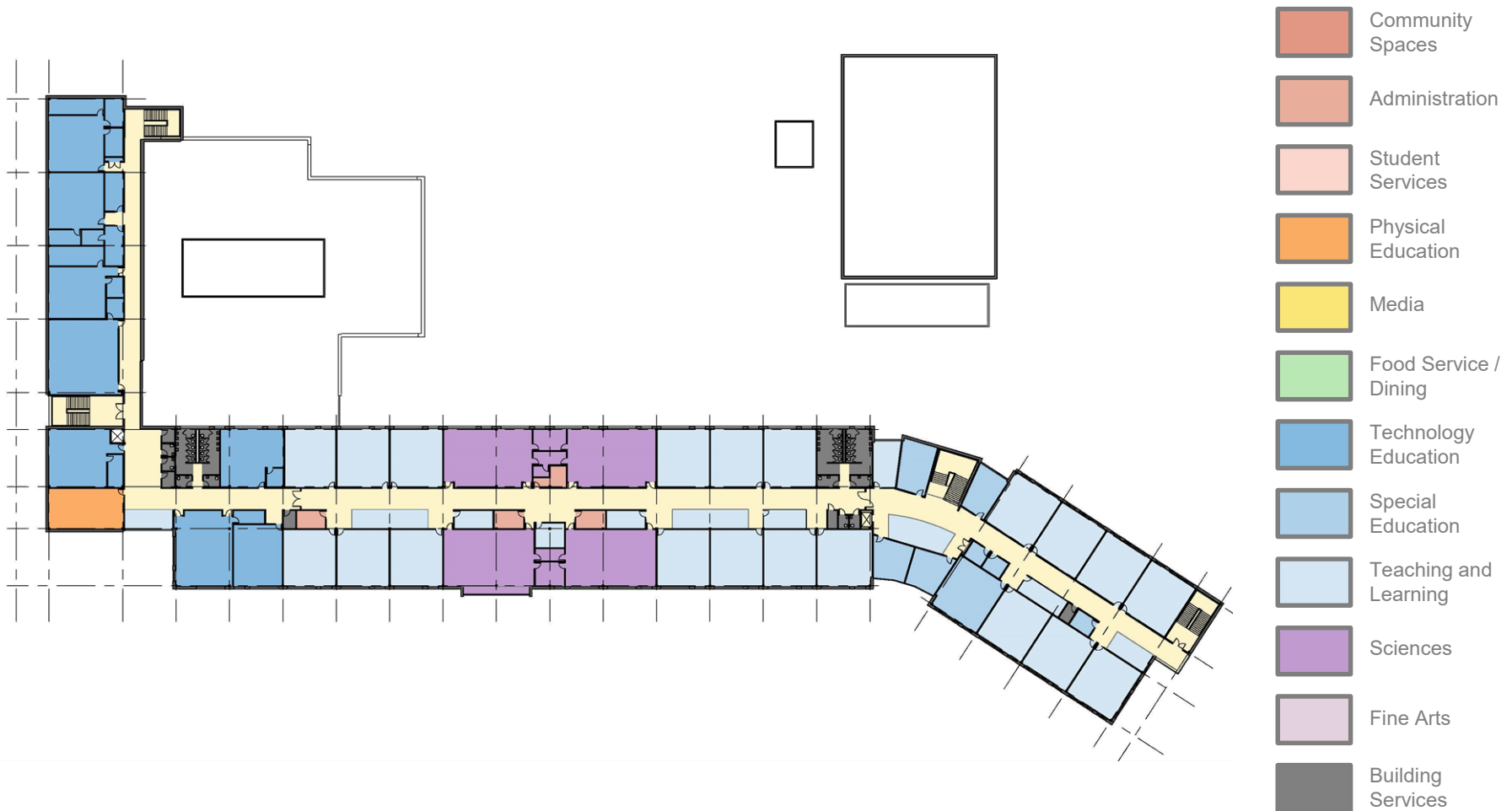
PROPOSED FIRST FLOOR PLAN

Schematic Design Review



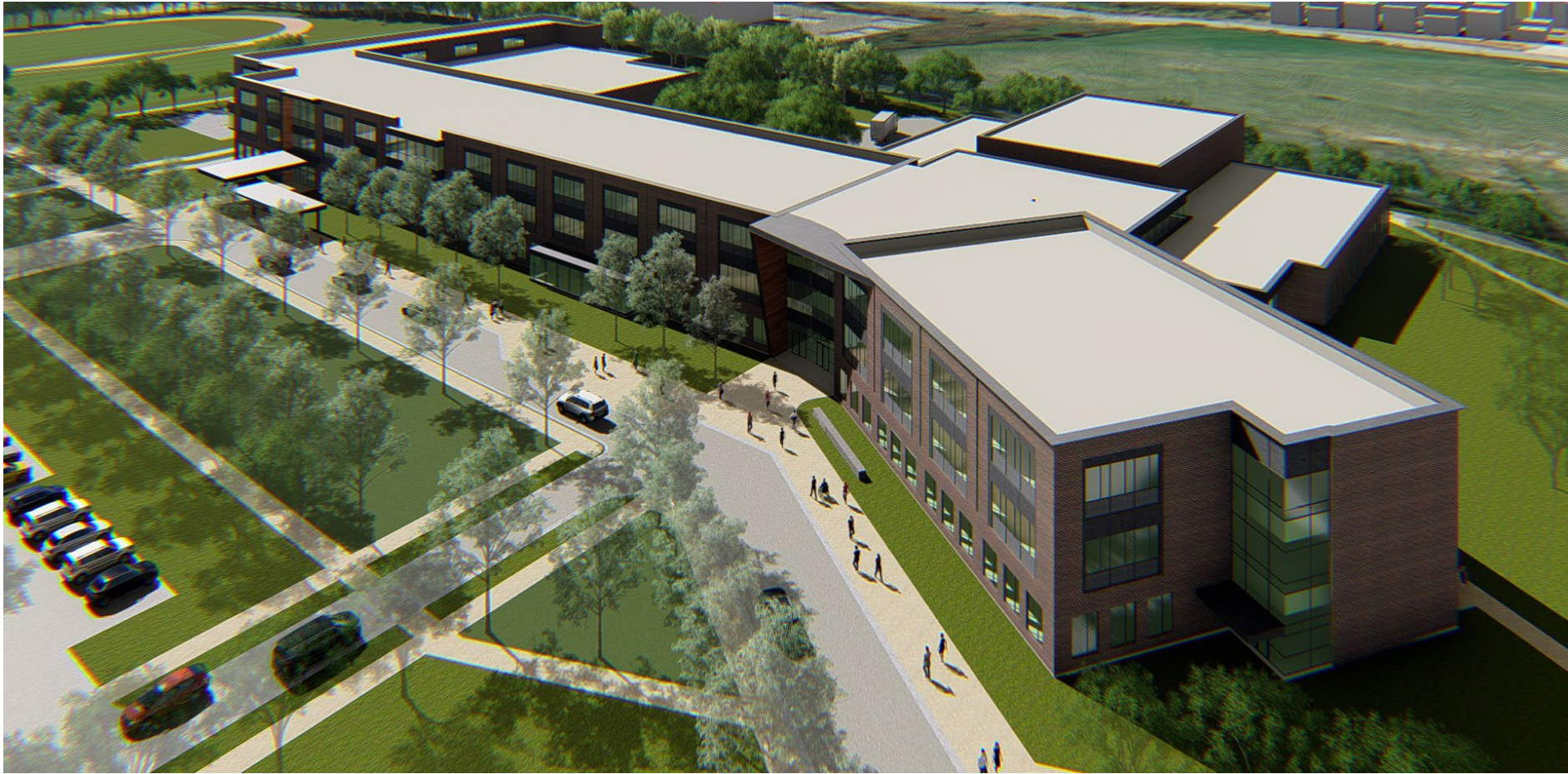
PROPOSED SECOND FLOOR PLAN

Schematic Design Review



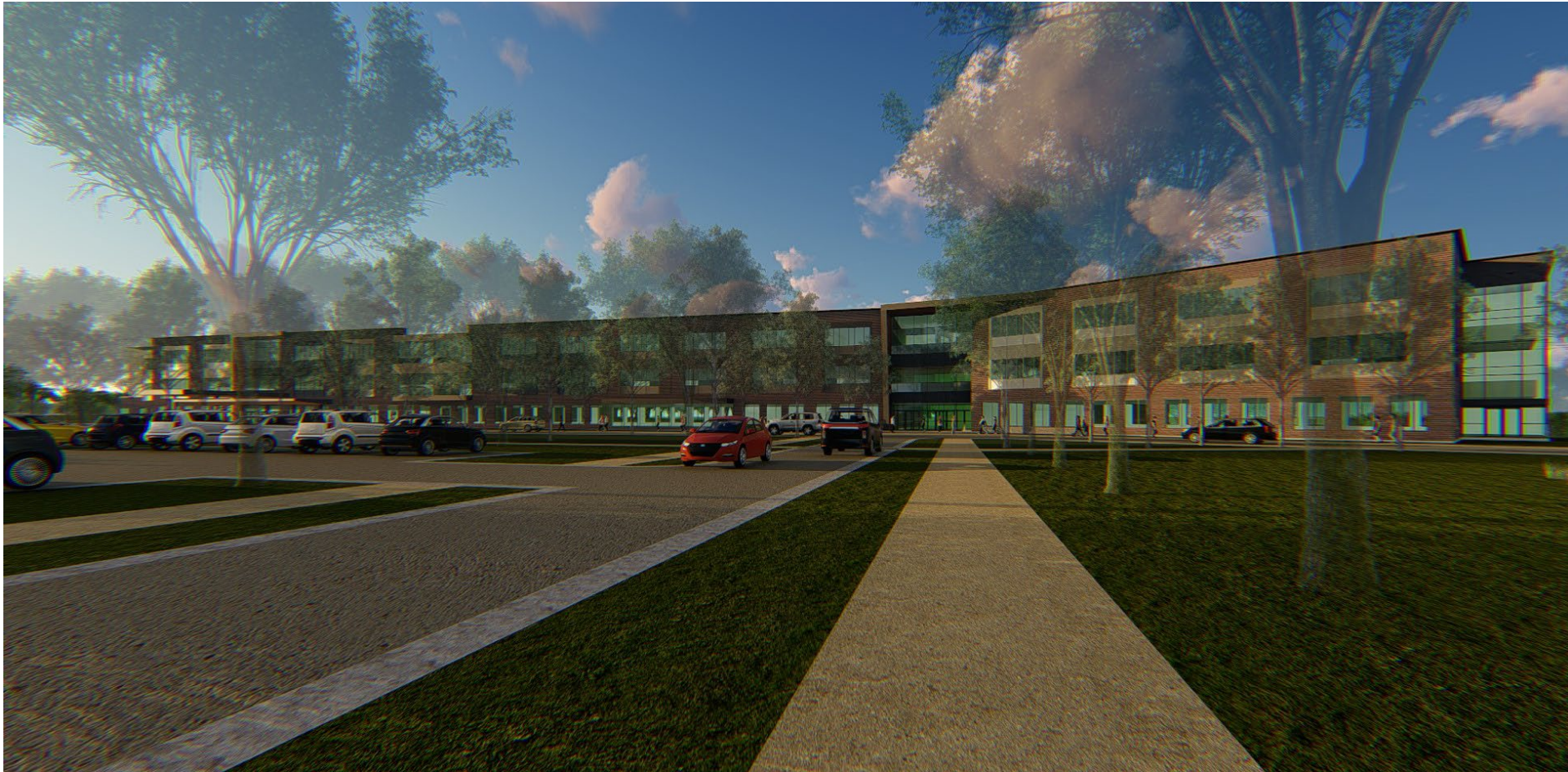
PROPOSED THIRD FLOOR PLAN

Schematic Design Review



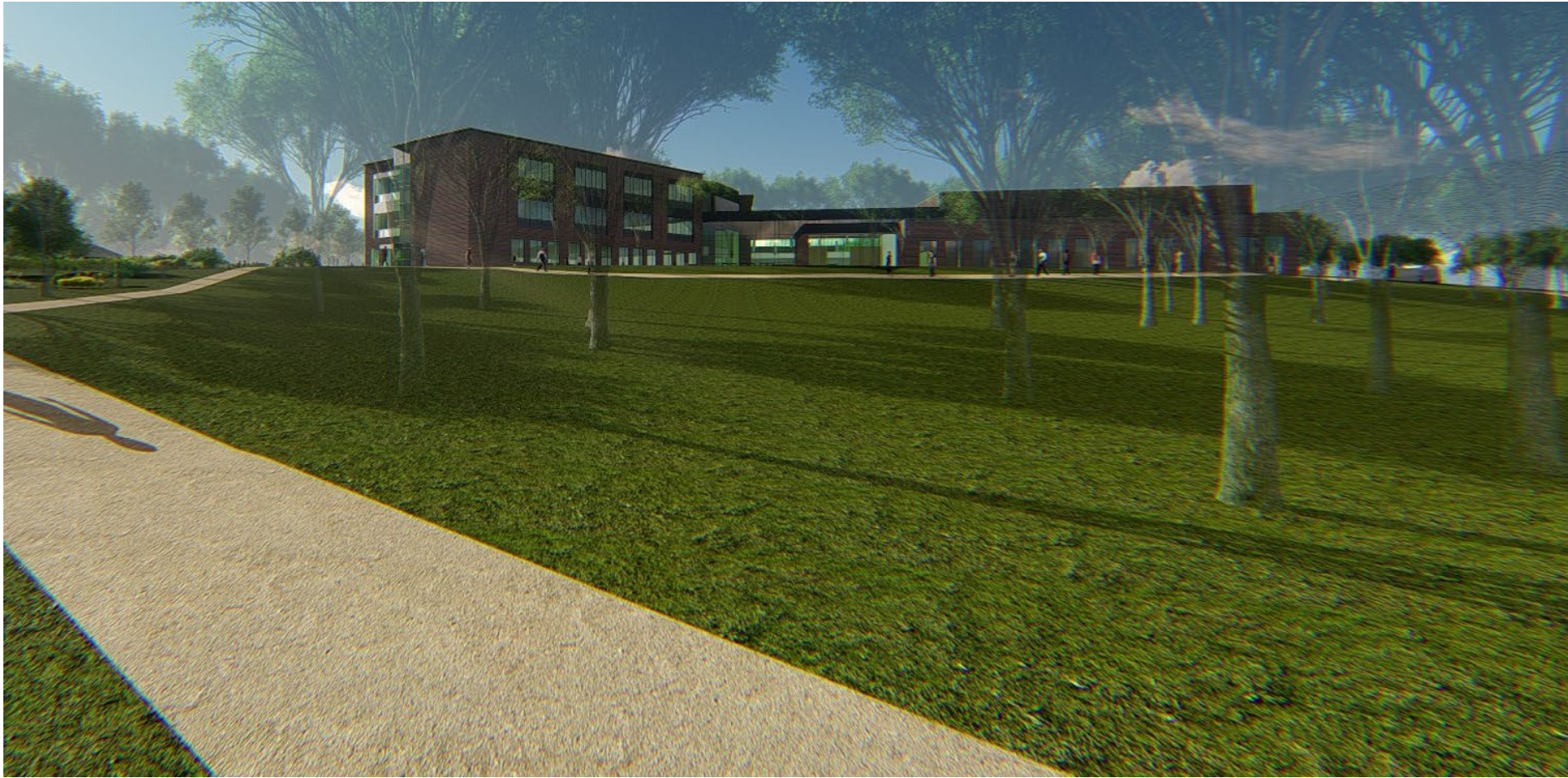
AERIAL LOOKING NORTHWEST

Schematic Design Review



VIEW LOOKING NORTH

Schematic Design Review



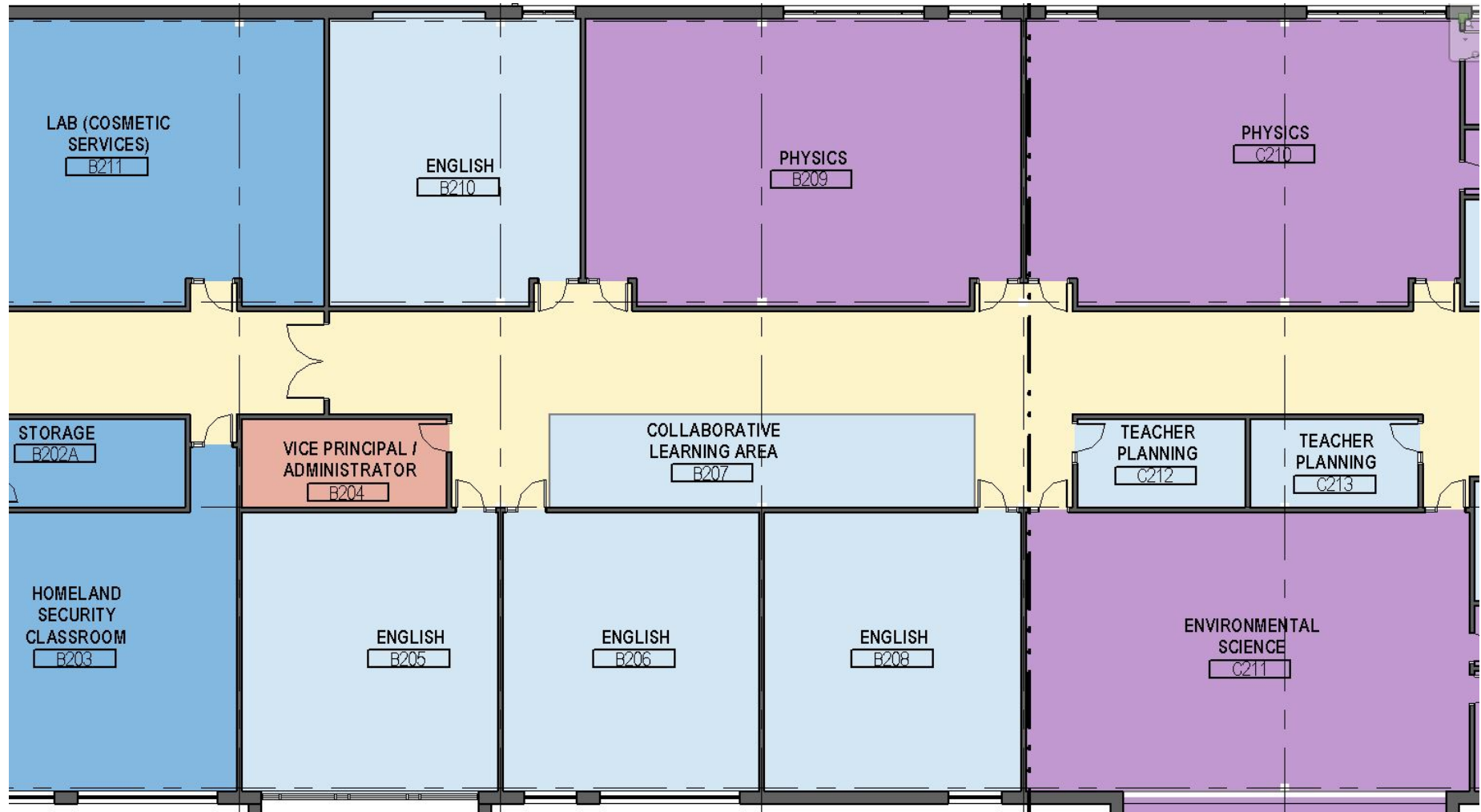
VIEW LOOKING SOUTHWEST

Schematic Design Review



PATTERSON MAIN ENTRANCE

Schematic Design Review



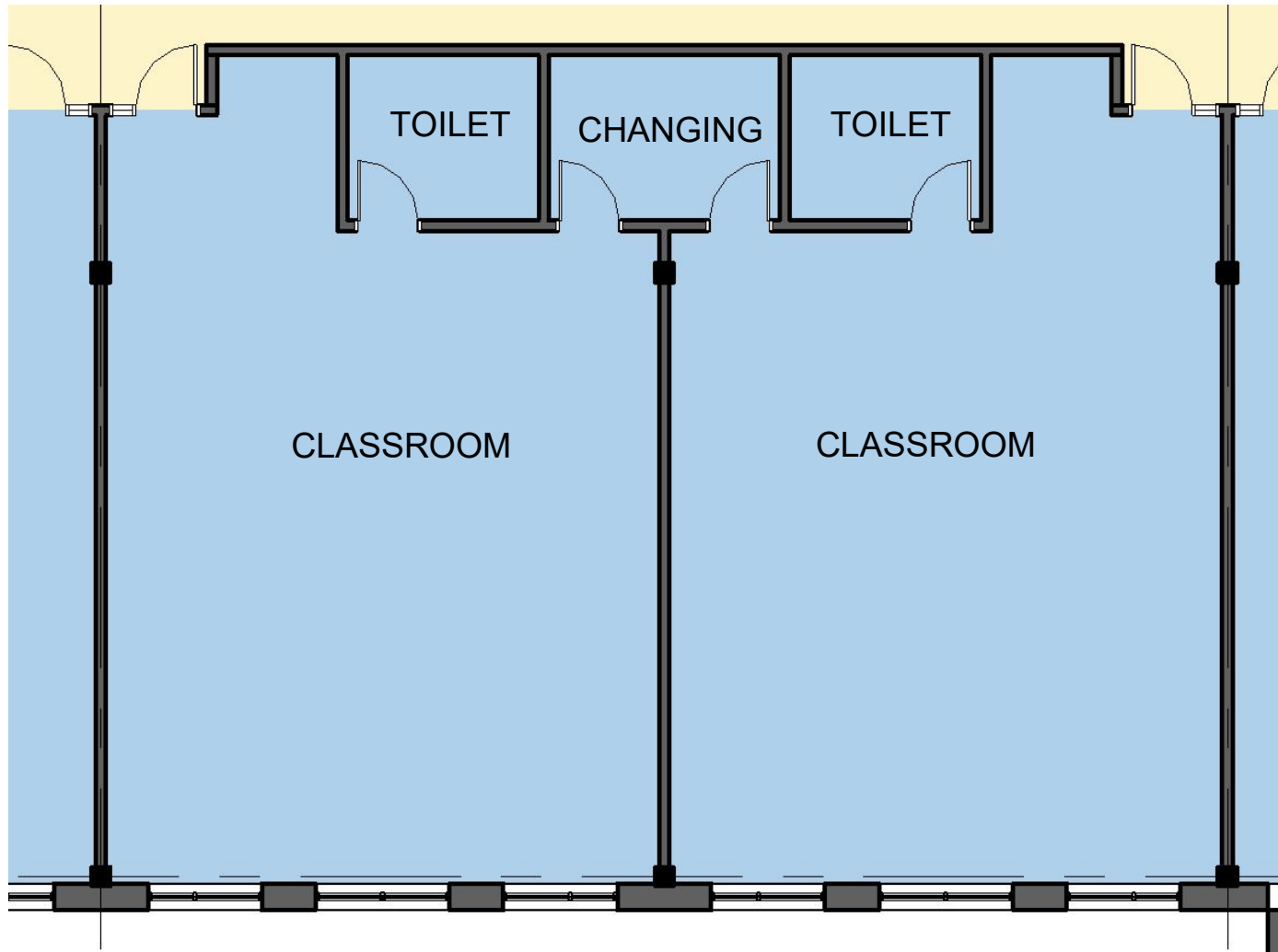
PATTERSON CLASSROOMS

Schematic Design Review



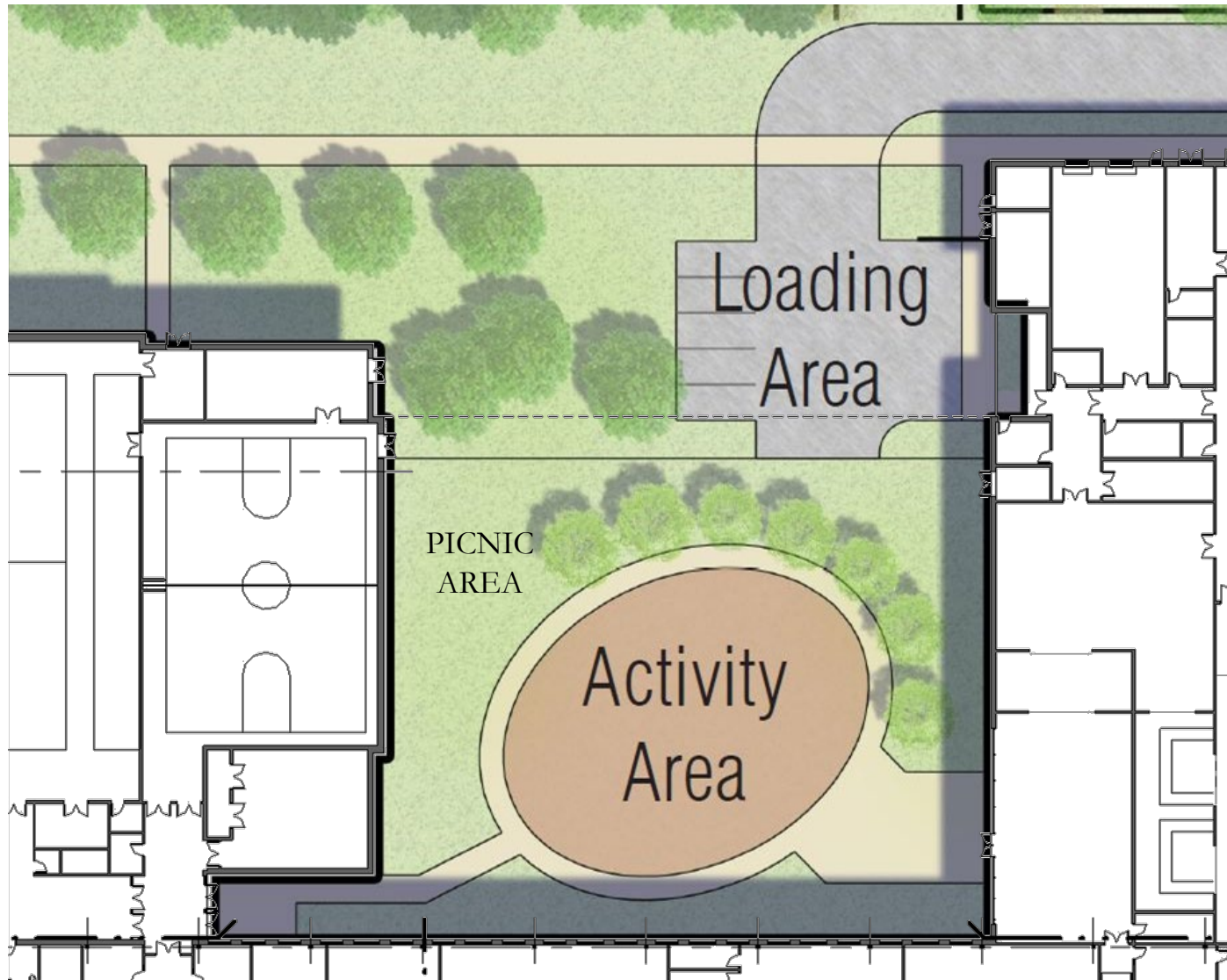
CLAREMONT MAIN ENTRANCE

Schematic Design Review



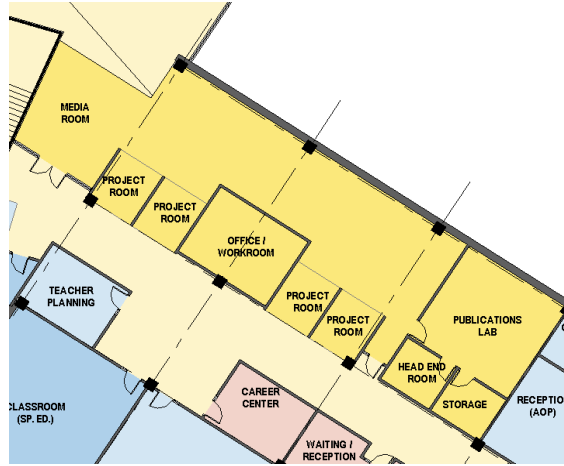
CLAREMONT CLASSROOMS

Schematic Design Review



CLAREMONT OUTDOOR SPACES

Schematic Design Review



SHARED SPACES

Thank You!



This presentation is brought to you by the
21st Century School Buildings Program
And Stantec.

www.baltimore21stcenturyschools.org

21st Century School Buildings Program

Baltimore City Public Schools
200 East North Avenue Room 407-B
Baltimore MD 21202
(443) 642-4600

Mignon R. Anthony

Executive Director, 21st Century Buildings Program
Baltimore City Public Schools

Gary McGuigan

Senior Vice President, Capital Development Division
Maryland Stadium Authority

Dawn Kirstaetter

Deputy Mayor, Health, Human Services, Education and Youth
City of Baltimore

David Lever

Executive Director, Public School Construction Program
State of Maryland

BALTIMORE CITY
PUBLIC SCHOOLS

