

# 21<sup>st</sup> Century School Buildings Plan

**SCHOOL** Patterson High School & Claremont Middle/High School  
**COMMUNITY MEETING** Concept Design Review | February 9, 2017



## Introductions

**Communication Coordinator**

**Design Director**

**Design Team**

## Agenda

- **21<sup>st</sup> century School Buildings Program**
- **School Size & Program Requirements**
- **Existing Conditions**
- **Site Circulation**
- **Project Goals**
- **Design Studies**
- **Site design**
- **Floor Plans**
- **Exterior Views**
- **Major Building Spaces**

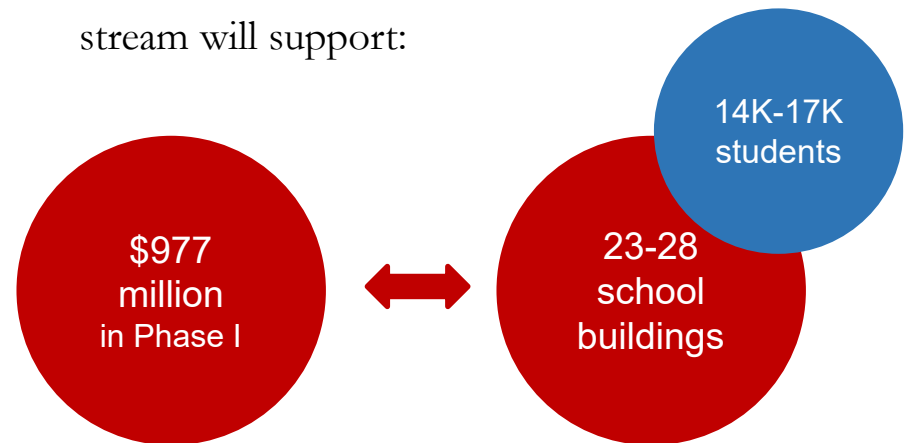
# 21<sup>st</sup> Century School Buildings Program Update

The Baltimore City Public School System (City Schools) Construction and Revitalization Act of 2013 resulted in a partnership between:

- The State of Maryland
- Baltimore City
- City Schools

*Each contribute \$20 million* annually towards the plan.

Current estimates suggest the funding stream will support:



City Schools' Plan is one of the largest public works project in Baltimore City to date.

# Patterson Enrollment Numbers

Current Grades	9-12
Current capacity	
Enrollment	(SY 15)
Current Utilization	

Design Grades	9-12
Design capacity	
Design Enrollment	
Design Utilization	

Enrollment Projections	
	SY 20-21
9 <sup>th</sup>	
10 <sup>th</sup>	
11 <sup>th</sup>	
12 <sup>th</sup>	



# Patterson Classrooms and Spaces

Classrooms (29): General, English, Math, Social Studies	Fine Arts: Visual Art, Music, Drama, Auditorium
Science Labs (9): Biology, Chemistry, Physics, Environmental Science	Administration: Main Office, Distributed Administration, Faculty Support
Student Services: Guidance, Health Suite, Support Services, School Store, SGA Office	Physical Education: Gymnasium, Wrestling, Fitness Room, Health Classroom
Technical Education: FOT Lab, Project Lead the Way, Design Tech, ROTC, Allied health, Emergency Prep., Pharmacy, Cosmetology, Child Care, Business Education	Community Spaces: Family Resource Suite, Out of School Time Support, Pantry, Personal Care, Laundry, Community Health Center
Special Education Classrooms	Collaborative Learning Areas
Life Skills Classrooms	Cafeteria
Dining	Media Center

# Claremont Enrollment Numbers

Current Grades	
Current capacity	
Enrollment	(SY 15)
Current Utilization	

Design Grades	
Design capacity	
Design Enrollment	
Design Utilization	

Enrollment Projections	
	SY 20-21
6 <sup>th</sup>	
7 <sup>th</sup>	
8 <sup>th</sup>	
9 <sup>th</sup>	
10 <sup>th</sup>	
11 <sup>th</sup>	
12 <sup>th</sup>	

## Claremont Classrooms and Spaces

Classrooms (10)	Cafeteria
School Store	Gymnasium
Support Services: Psychologist, Social Worker, CST, Audiologist, Speech Therapist, Sensory Rooms	Life Skills Lab, Horticulture Lab, OT/PT Room
Health Suite	Main Office / Administrative Suite
Fine Arts: Art Studio, Instrumental Music	Student Services
Family Resource Suite	Media Center (shared with Patterson)

# Concept Design Review



- Built in 1962 as an elementary school
- Converted in 1977 to Claremont School for Special Education
- Students have moderate to severe disabilities



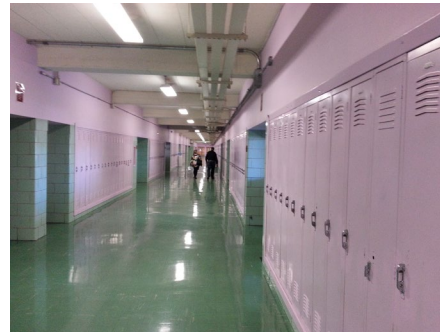
## CLAREMONT EXISTING CONDITIONS



# Concept Design Review

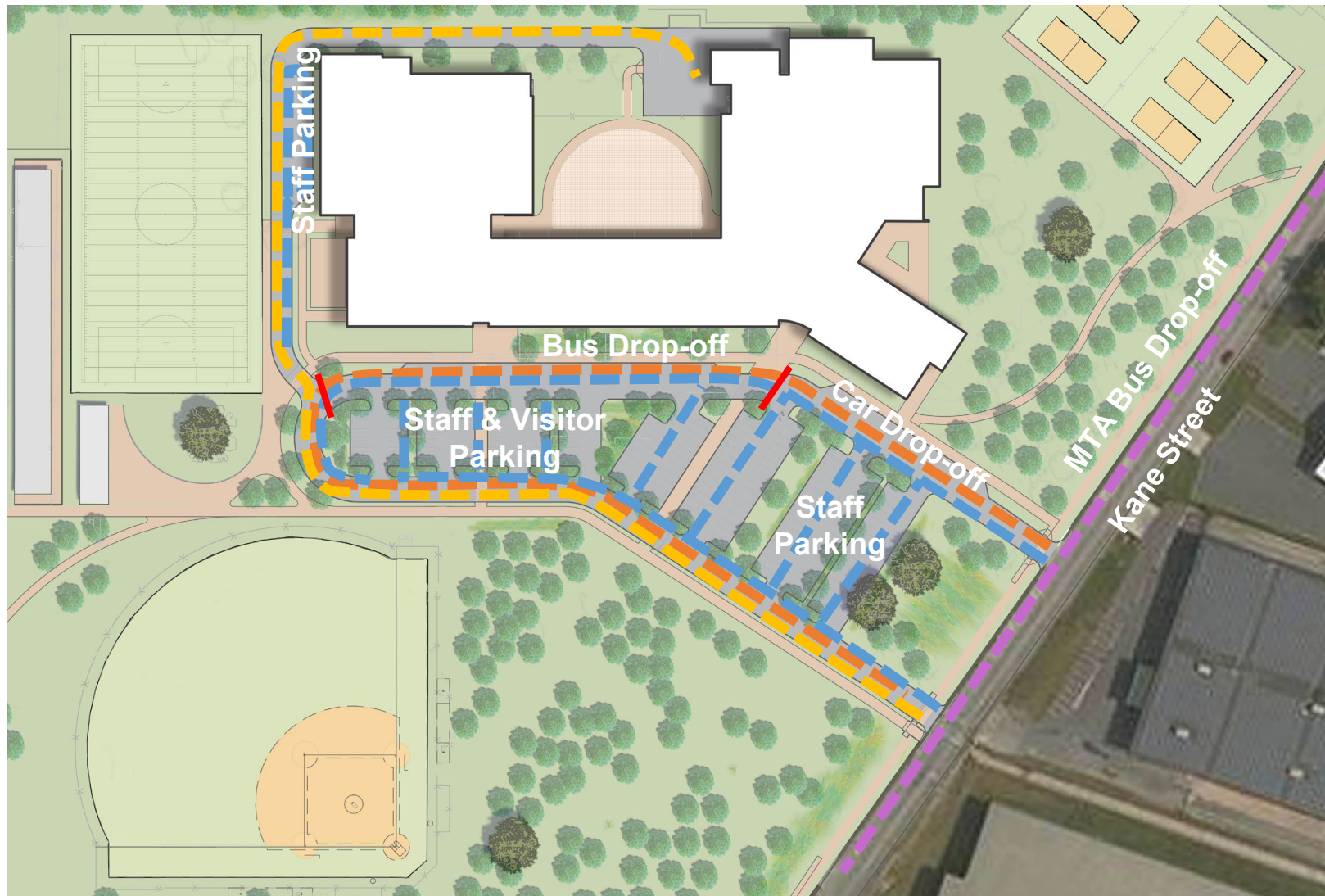


- Built in 1957 with numerous additions
  - 9th Grade Academic Wing (1966 addition)
  - Administrative Wing (1977 addition)
- Masonry Building with single-glazed windows
- Athletic stadium
- Baseball and Softball fields
- Tennis courts



## PATTERSON EXISTING CONDITIONS

# Concept Design Review



PROPOSED VEHICULAR CIRCULATION



# Concept Design Review



-  Pedestrian Hub
-  Major Pedestrian Circulation
-  Building Entrance

PROPOSED PEDESTRIAN CIRCULATION



# Project Goals

Strong Sense of Place	Safe Environment
Modern Facility	Ease of Circulation Inside and Outside
Inspiring Facility	Sensitive Design
2 Separate Schools in 1 Building	Emphasize Equality of Both Schools
New Community Space	21 <sup>st</sup> Century Learning Environment

## Project Development



H-Scheme



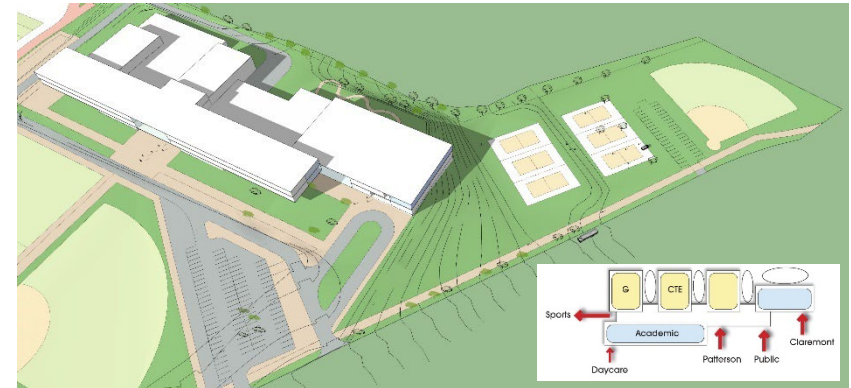
Bar Scheme



Hinge Scheme



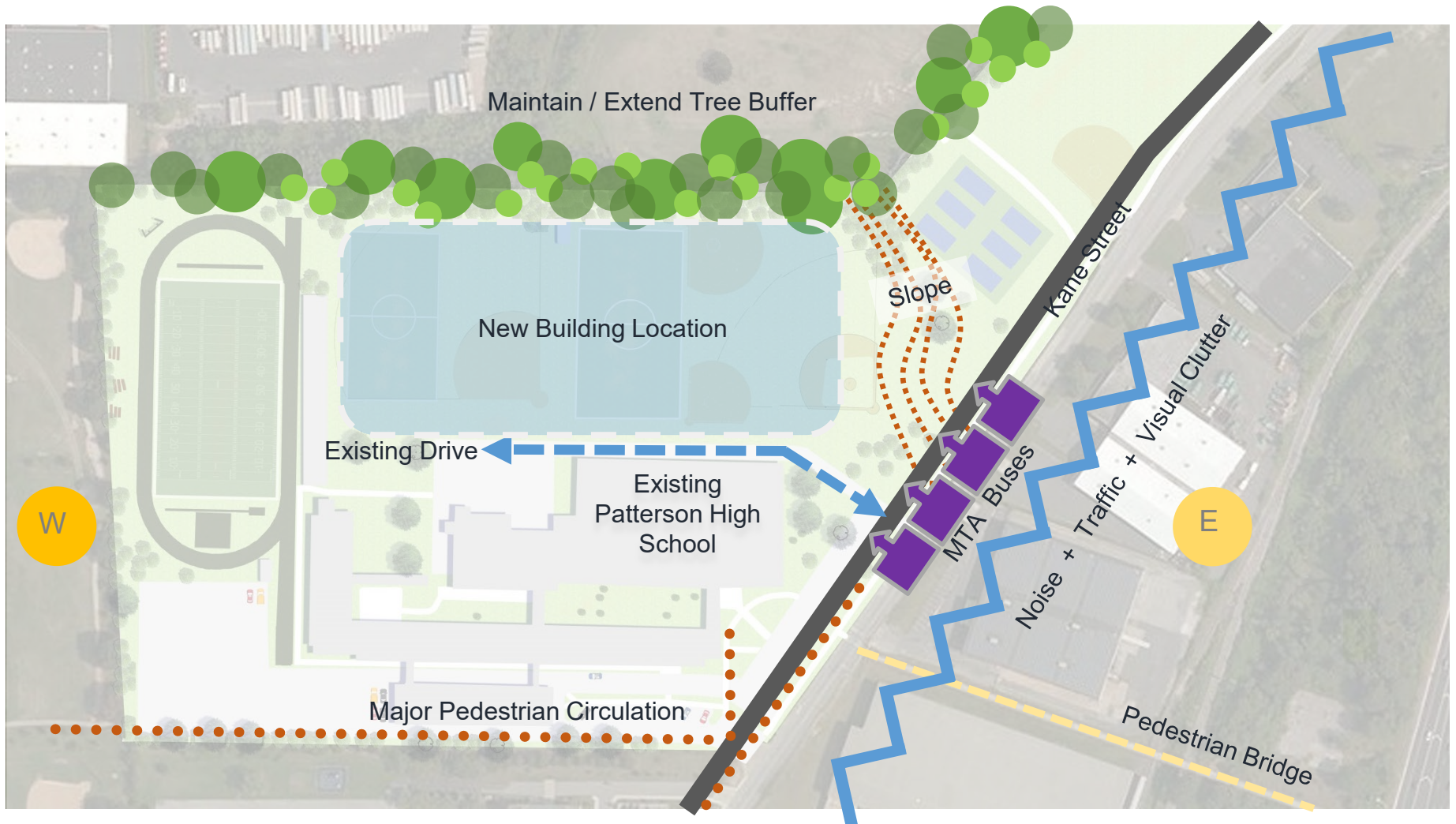
On the Hill



On the Fields

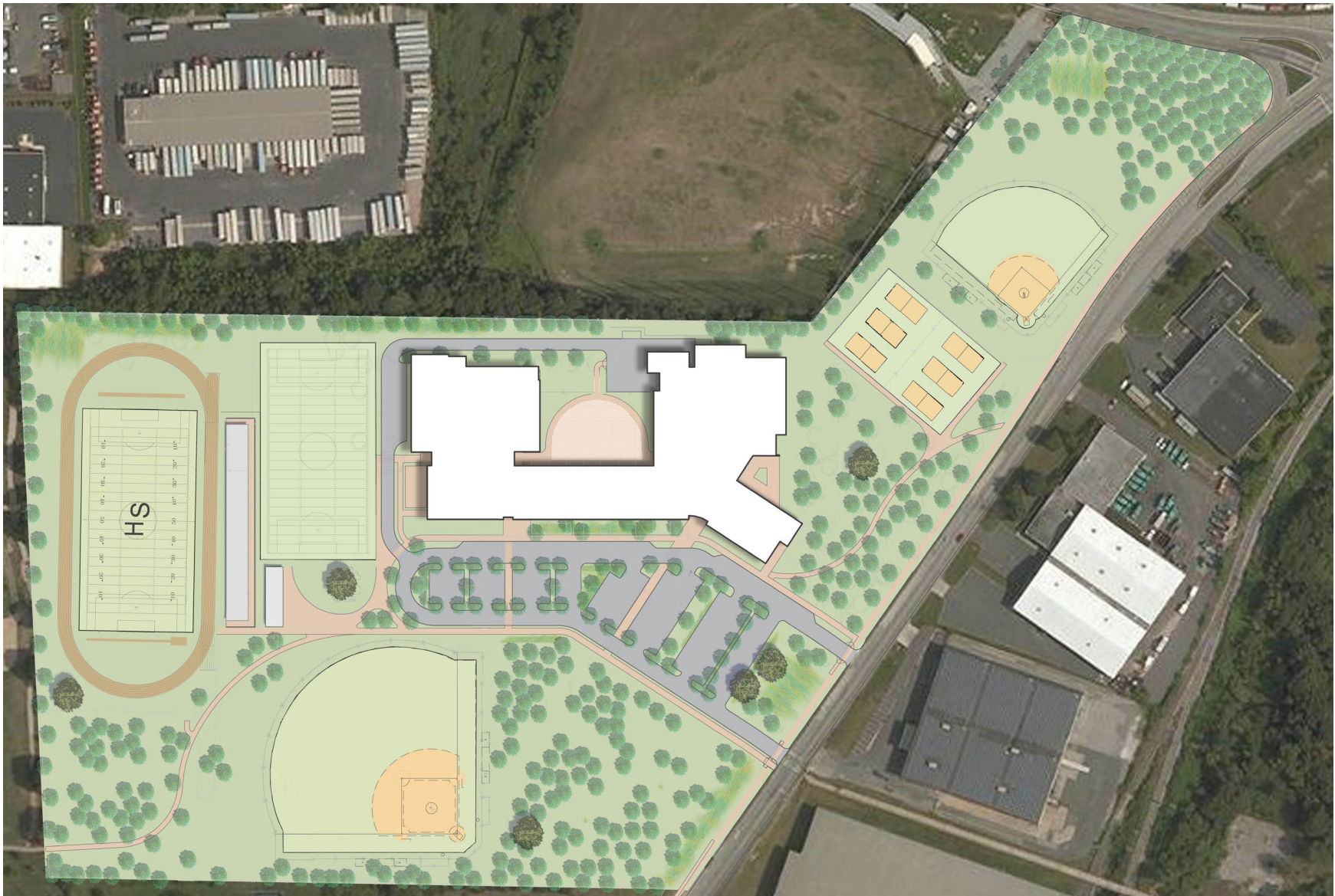


# Project Development

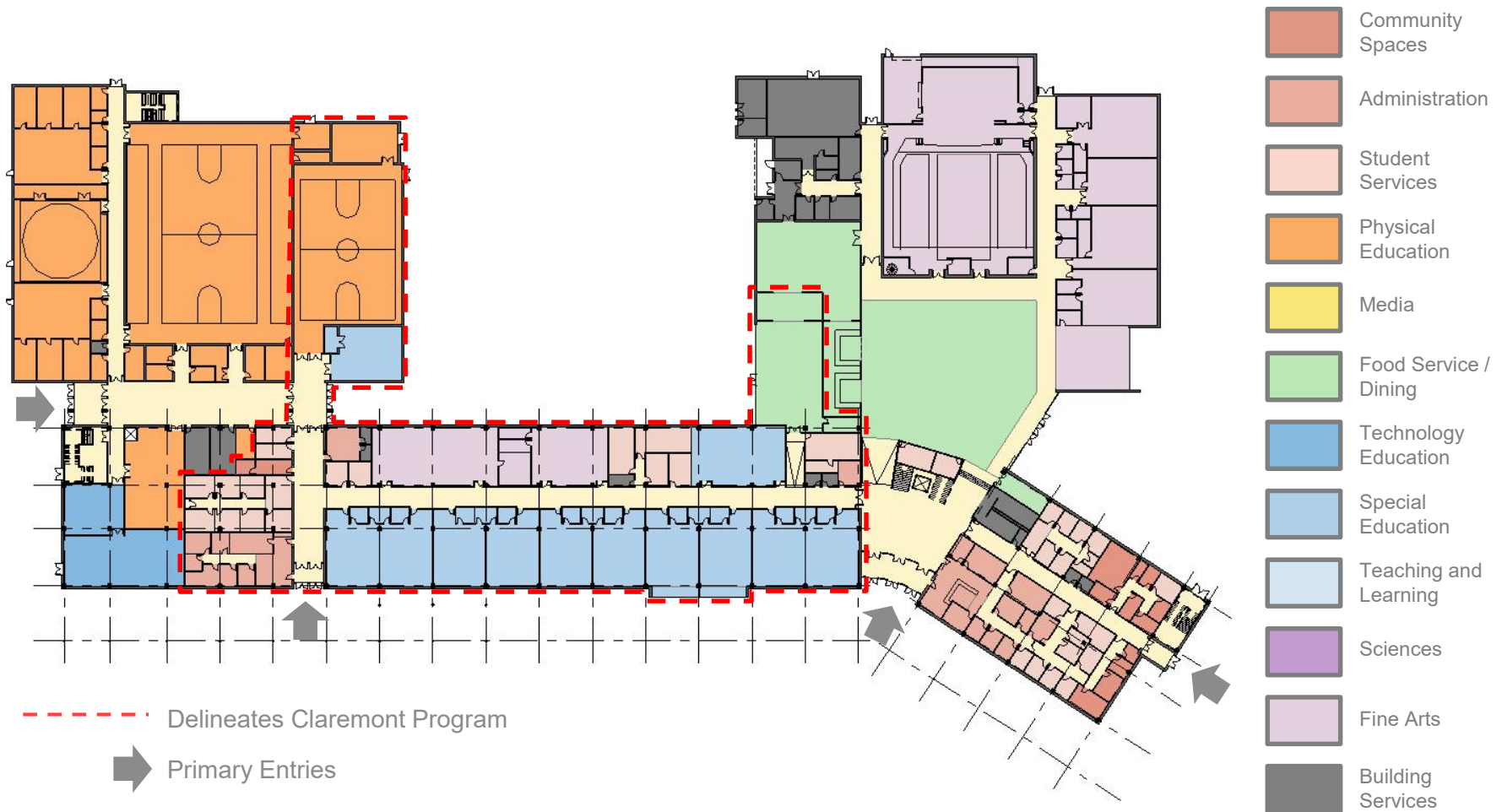




# PROPOSED SITE PLAN

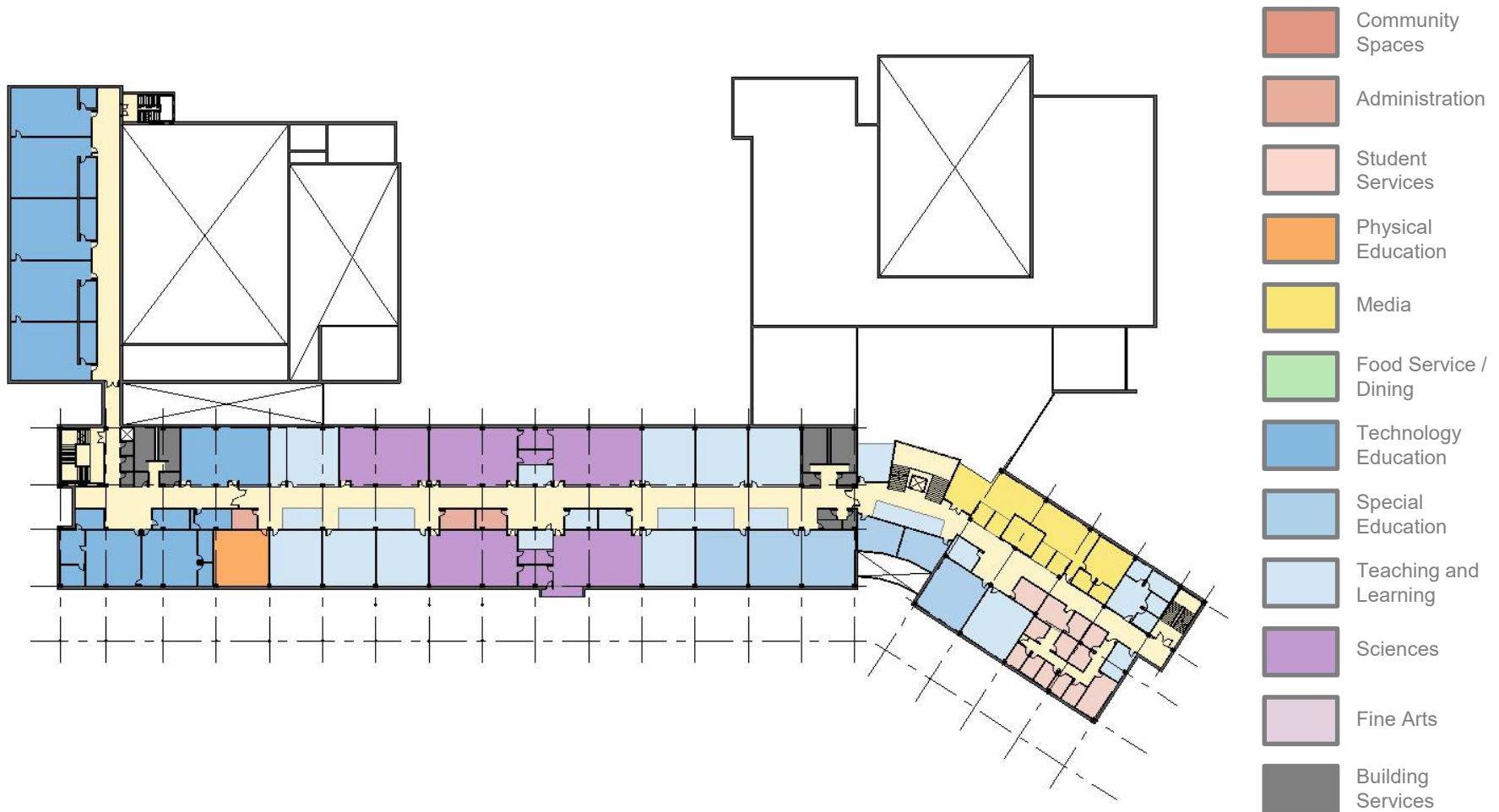


# Concept Design Review



## PROPOSED FIRST FLOOR PLAN

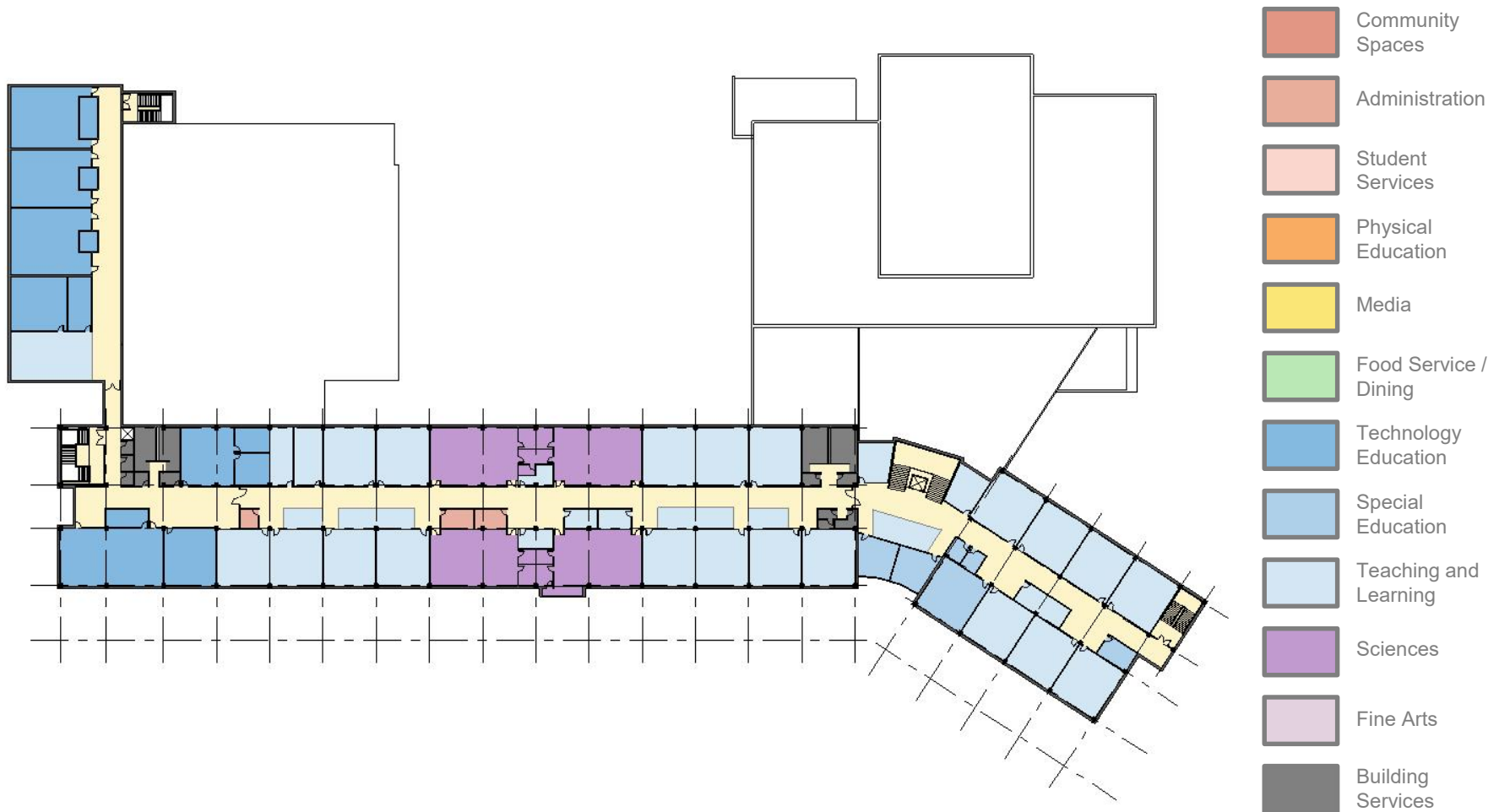
# Concept Design Review



## PROPOSED SECOND FLOOR PLAN



# Concept Design Review



## PROPOSED THIRD FLOOR PLAN



# Concept Design Review



AERIAL LOOKING NORTHWEST

# Concept Design Review



VIEW LOOKING NORTH



# Concept Design Review



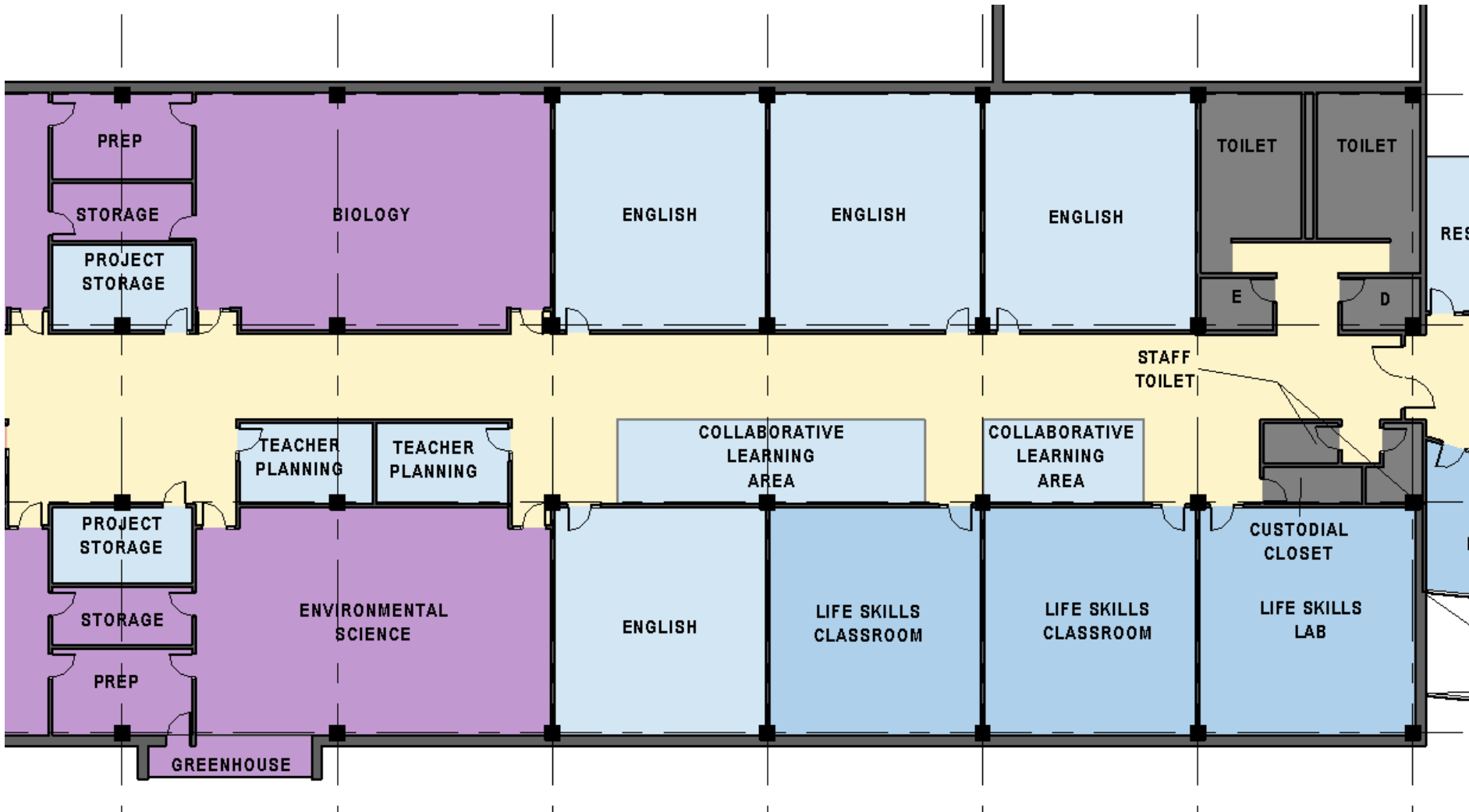
VIEW LOOKING SOUTHWEST

# Concept Design Review



PATTERSON MAIN ENTRANCE

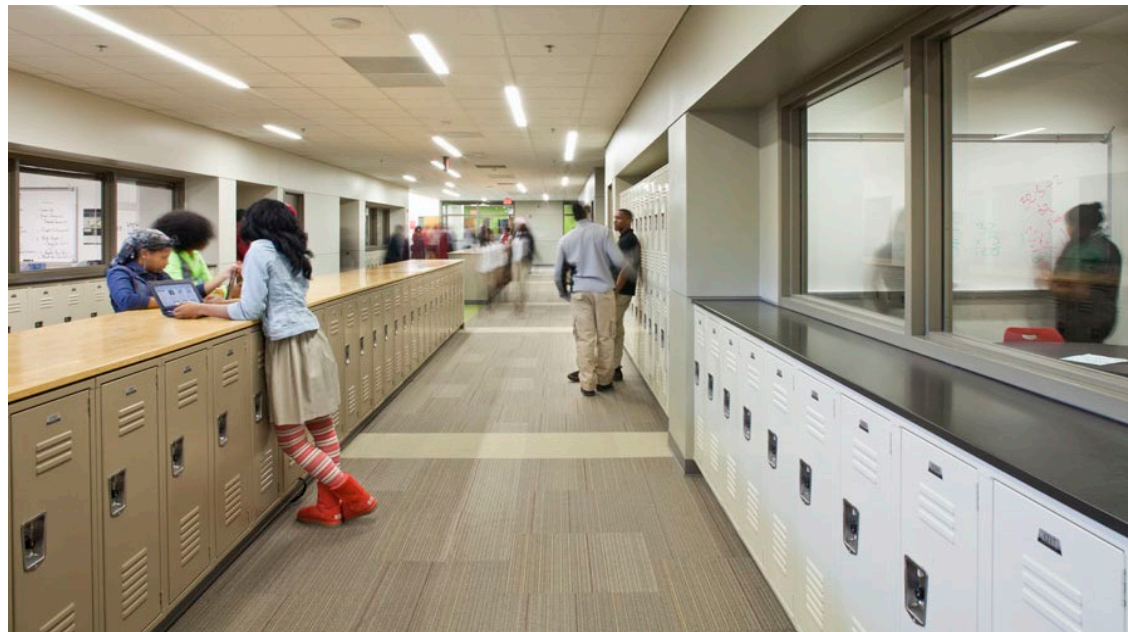
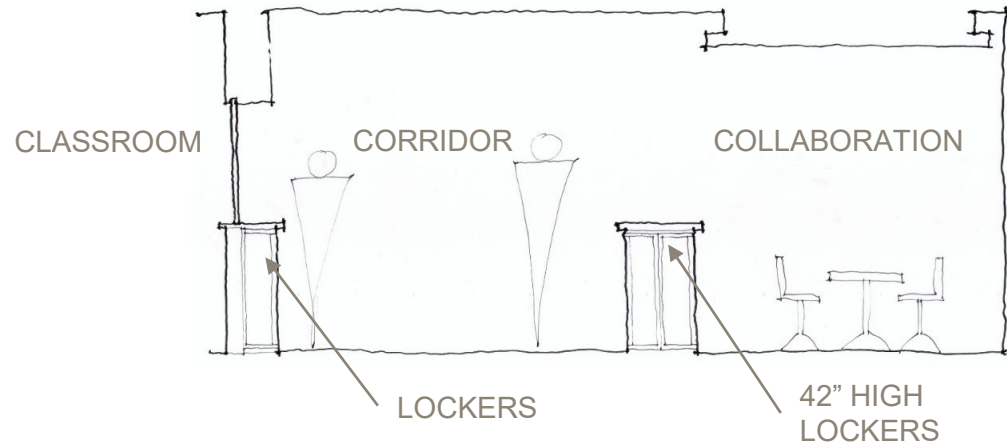
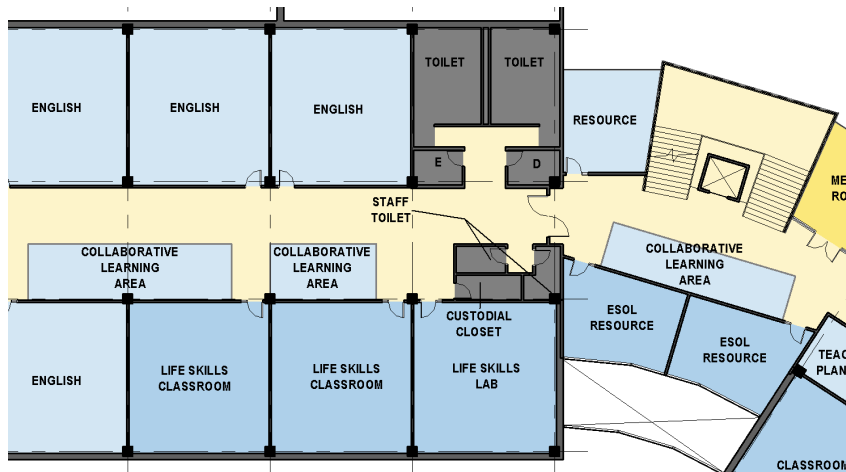
# Concept Design Review



## PATTERSON CLASSROOMS



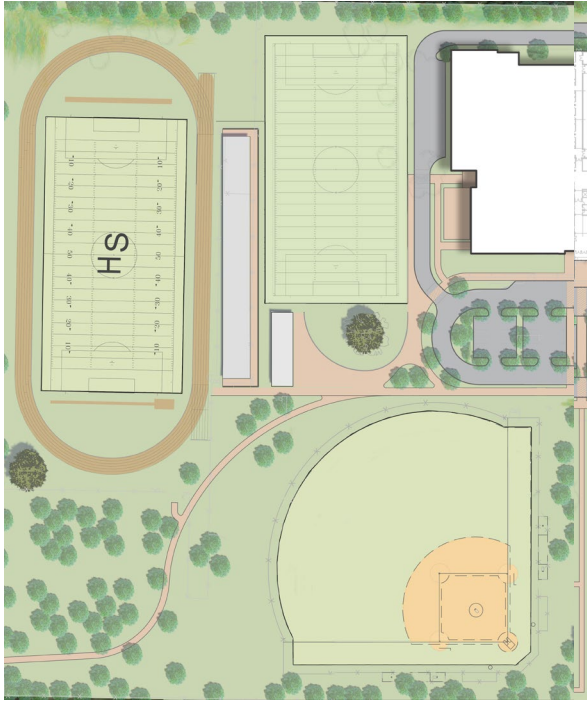
# Concept Design Review



## COLLABORATION SPACE



# Concept Design Review



## PATTERSON OUTDOOR SPACE OPTIONS

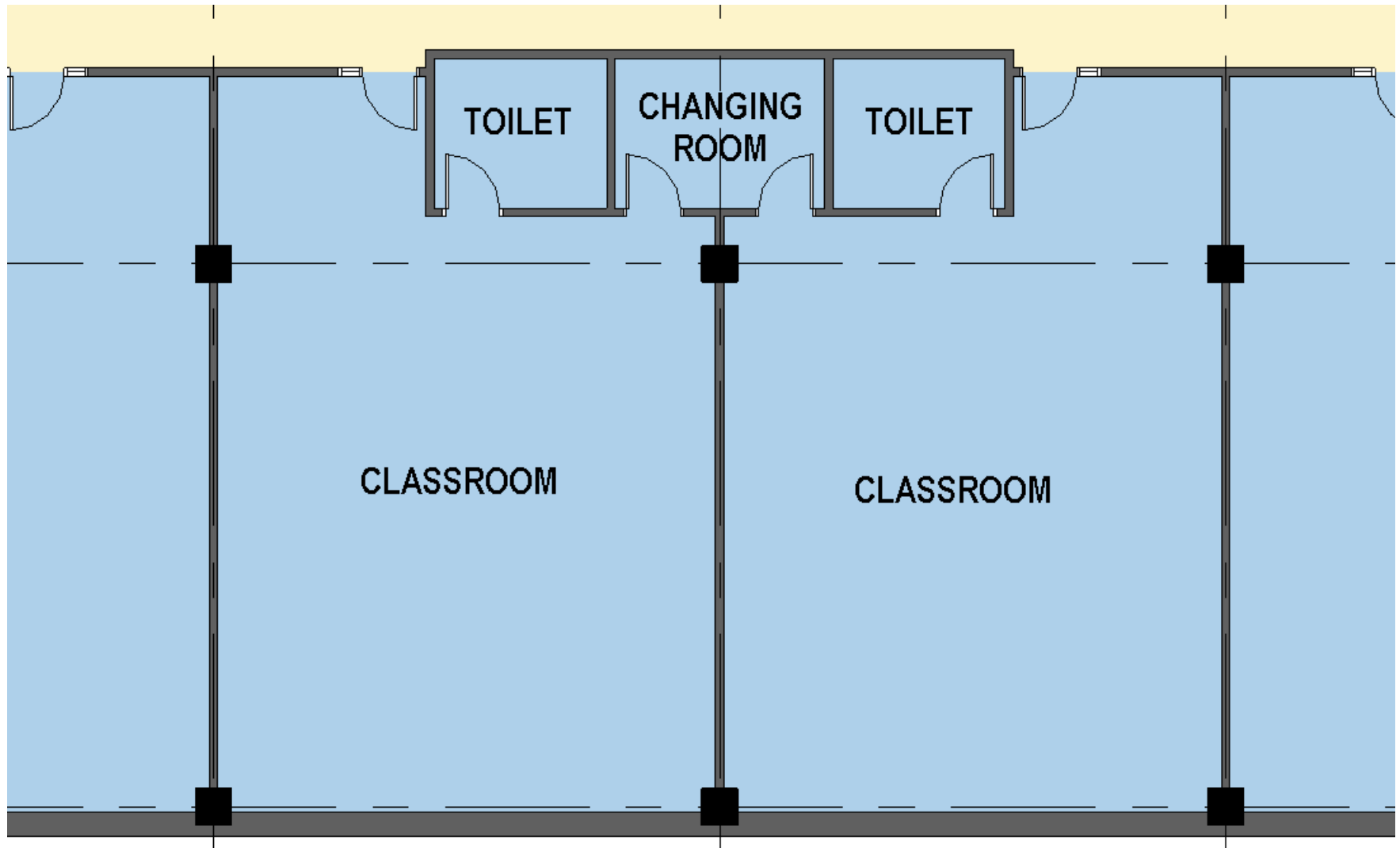


# Concept Design Review



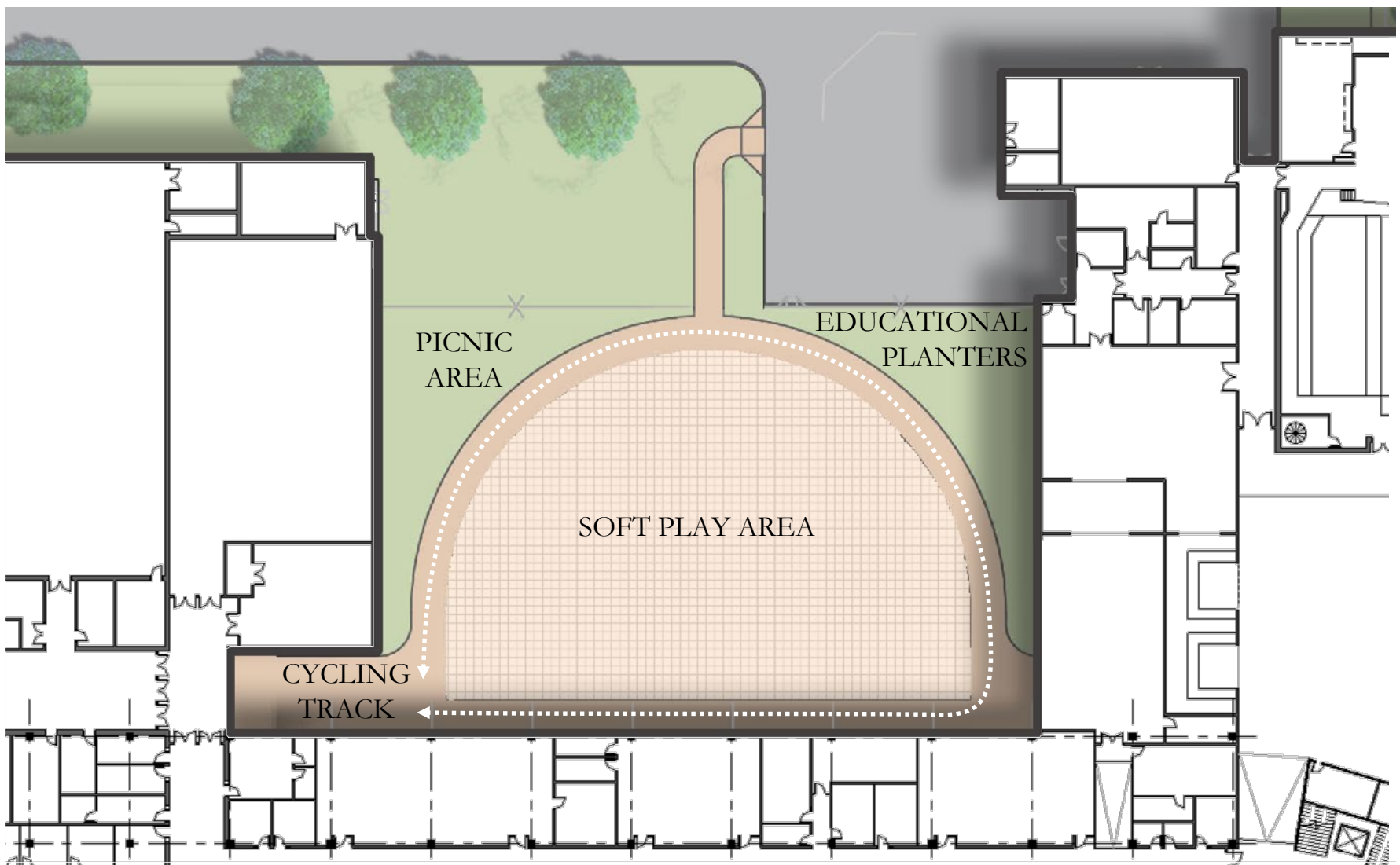
CLAREMONT MAIN ENTRANCE

## Concept Design Review



CLAREMONT CLASSROOMS

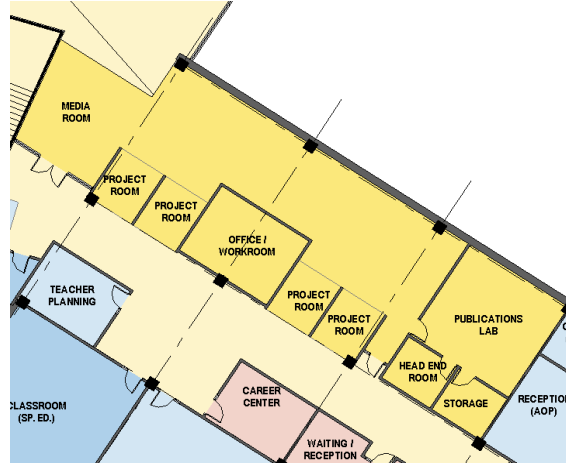
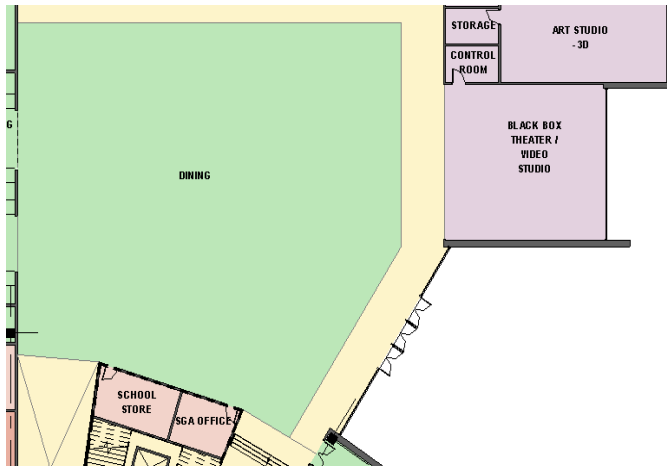
# Concept Design Review



## CLAREMONT OUTDOOR SPACES



# Concept Design Review



## SHARED SPACES

Thank You!



This presentation is brought to you by the  
21<sup>st</sup> Century School Buildings Program  
And Stantec.

[www.baltimore21stcenturyschools.org](http://www.baltimore21stcenturyschools.org)

**21st Century School Buildings Program**

Baltimore City Public Schools  
200 East North Avenue Room 407-B  
Baltimore MD 21202  
(443) 642-4600

**Mignon R. Anthony**

Executive Director, 21st Century Buildings Program  
Baltimore City Public Schools

**Gary McGuigan**

Senior Vice President, Capital Development Division  
Maryland Stadium Authority

**Dawn Kirstaetter**

Deputy Mayor, Health, Human Services, Education and Youth  
City of Baltimore

**David Lever**

Executive Director, Public School Construction Program  
State of Maryland

BALTIMORE CITY  
PUBLIC SCHOOLS

