



21st Century School Buildings Program

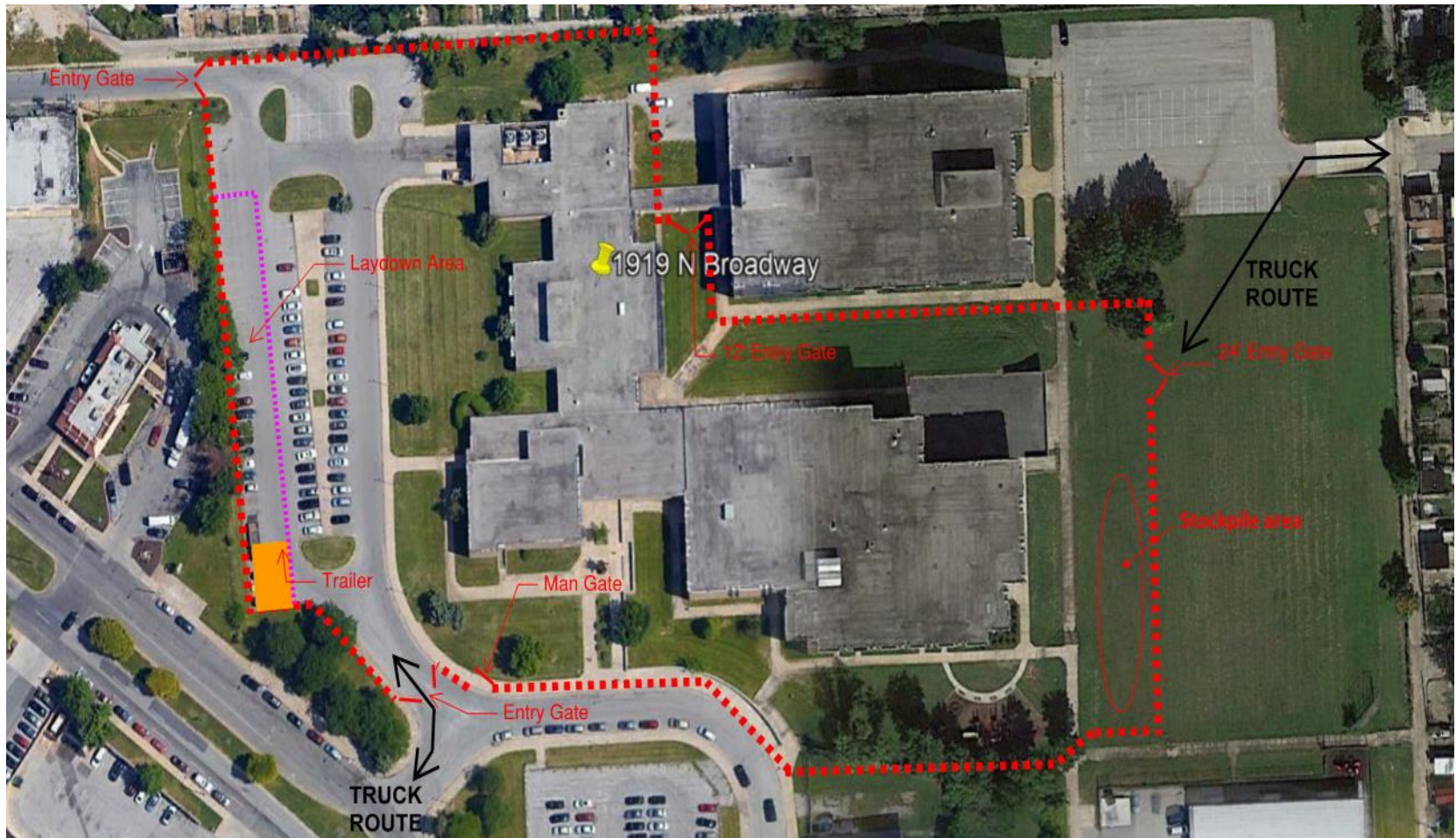
Harford Heights & Sharp-Leadenhall Elementary Schools
Construction Update Meeting | August 19, 2020

BALTIMORE CITY
PUBLIC SCHOOLS



Presenters	Agenda
<p>Renee Stainrod Manager, Community & Public Relations 21st Century School Buildings Program</p> <p>Alicia Thomas Sr. Coordinator, Community & Public Relations 21st Century School Buildings Program</p> <p>Tim Cober Project Manager Maryland Stadium Authority</p> <p>Thomas Grubb Project Manager MCN Build/Southway Builders</p>	<ul style="list-style-type: none"> • Introductions and Agenda • Site Logistics Plan • General Notes • Progress • Upcoming Schedule Highlights • Team Contacts • Questions

Broadway entrance and “limited traffic” entrance at Wolfe Street, across the field. A temporary road has been installed at the field; it will be removed prior to the school’s re-opening.



Construction

General Notes

- Hours of operation:
 - Monday to Saturday
 - 7 a.m. to 5 p.m.
- Armed security guards during hours of operation and 24-hour video monitoring
- Health personnel for COVID screening and hand wash stations
- Bi-weekly lawn care



Slab On Grade



Steel Erection and Foundations



Iron Workers



Remove Old and Install New Roof



Placing Stone For Area B Slab



Area B Slab Pour







- Structural Steel
- Concrete slabs
- Framing interior walls
- Masonry foundations and walls
- MEP rough-ins
- New roof and exterior skin

Time Frame	Activity
August	Concrete Slab on Grade Area B/C
August/September	Masonry Walls Areas B & C
August/September	Exterior Skin Area A
August/September	Steel Joists and Decking Area B/C
August/September	Interior Walls and MEP's Area A/B/C

Project Contacts

Tim Cober

tcober@mdstad.com
410-218-0733

Renee Stainrod

rastainrod@bcps.k12.md.us

Alicia Thomas

athomas03@bcps.k12.md.us
443-240-2359

MCN Build/Southway Builders Project Team

Bill Beschorner

Project Executive

Tom Grubb

Project Manager
202-285-7403

Jared Blocher

Superintendent
202-257-9203

Matt Wolfe

Assistant Project Manager

Ed Wasilewski

Superintendent
202-340-4985

Questions?

21st Century School Buildings Program Office

www.baltimore21stcenturyschools.org
(443) 642-4600



21stCSBaltimore



21stCenturySchoolBuildingsProgram



21stCSBaltimore



Thank You.

This presentation was brought to you by the 21st Century School Buildings Program.

www.baltimore21stcenturyschools.org

21st Century School Buildings Program

Baltimore City Public Schools
200 East North Avenue Room 407-B
Baltimore MD 21202
(443) 642-4600

Dorothy Hellman

Executive Director, 21st Century Buildings Program
Baltimore City Public Schools

Gary McGuigan

Executive Vice President, Capital Development Division
Maryland Stadium Authority

Robert Gorrell

Executive Director, Public School Construction Program
State of Maryland

BALTIMORE CITY
PUBLIC SCHOOLS

